



# TEMPORARY ABANDONMENT WELL APPLICATION

OPERATOR: License# \_\_\_\_\_  
 Name: \_\_\_\_\_  
 Address 1: \_\_\_\_\_  
 Address 2: \_\_\_\_\_  
 City: \_\_\_\_\_ State: \_\_\_\_\_ Zip: \_\_\_\_\_ + \_\_\_\_\_  
 Contact Person: \_\_\_\_\_  
 Phone: ( \_\_\_\_\_ ) \_\_\_\_\_  
 Contact Person Email: \_\_\_\_\_  
 Field Contact Person: \_\_\_\_\_  
 Field Contact Person Phone: ( \_\_\_\_\_ ) \_\_\_\_\_

API No. 15- \_\_\_\_\_  
 Spot Description: \_\_\_\_\_  
 \_\_\_\_\_ - \_\_\_\_\_ - \_\_\_\_\_ - \_\_\_\_\_ Sec. \_\_\_\_\_ Twp. \_\_\_\_\_ S. R. \_\_\_\_\_  E  W  
 \_\_\_\_\_ feet from  N /  S Line of Section  
 \_\_\_\_\_ feet from  E /  W Line of Section  
 GPS Location: Lat: \_\_\_\_\_, Long: \_\_\_\_\_  
(e.g. xx.xxxxx) (e.g. -xxx.xxxxx)  
 Datum:  NAD27  NAD83  WGS84  
 County: \_\_\_\_\_ Elevation: \_\_\_\_\_  GL  KB  
 Lease Name: \_\_\_\_\_ Well #: \_\_\_\_\_  
 Well Type: (check one)  Oil  Gas  OG  WSW  Other: \_\_\_\_\_  
 SWD Permit #: \_\_\_\_\_  ENHR Permit #: \_\_\_\_\_  
 Gas Storage Permit #: \_\_\_\_\_  
 Spud Date: \_\_\_\_\_ Date Shut-In: \_\_\_\_\_

	Conductor	Surface	Production	Intermediate	Liner	Tubing
Size						
Setting Depth						
Amount of Cement						
Top of Cement						
Bottom of Cement						

Casing Fluid Level from Surface: \_\_\_\_\_ How Determined? \_\_\_\_\_ Date: \_\_\_\_\_

Casing Squeeze(s): \_\_\_\_\_ to \_\_\_\_\_ w / \_\_\_\_\_ sacks of cement, \_\_\_\_\_ to \_\_\_\_\_ w / \_\_\_\_\_ sacks of cement. Date: \_\_\_\_\_  
(top) (bottom) (top) (bottom)

Do you have a valid Oil & Gas Lease?  Yes  No

Depth and Type:  Junk in Hole at \_\_\_\_\_  Tools in Hole at \_\_\_\_\_ Casing Leaks:  Yes  No Depth of casing leak(s): \_\_\_\_\_  
(depth) (depth)

Type Completion:  ALT. I  ALT. II Depth of:  DV Tool: \_\_\_\_\_ w / \_\_\_\_\_ sacks of cement  Port Collar: \_\_\_\_\_ w / \_\_\_\_\_ sack of cement  
(depth) (depth)

Packer Type: \_\_\_\_\_ Size: \_\_\_\_\_ Inch Set at: \_\_\_\_\_ Feet

Total Depth: \_\_\_\_\_ Plug Back Depth: \_\_\_\_\_ Plug Back Method: \_\_\_\_\_

**Geological Data:**

Formation Name	Formation Top	Formation Base	Completion Information
1. _____	At: _____	to _____ Feet	Perforation Interval _____ to _____ Feet or Open Hole Interval _____ to _____ Feet
2. _____	At: _____	to _____ Feet	Perforation Interval _____ to _____ Feet or Open Hole Interval _____ to _____ Feet

~~UNDER PENALTY OF PERJURY I HEREBY ATTEST THAT THE INFORMATION CONTAINED HEREIN IS TRUE AND CORRECT TO THE BEST OF MY KNOWLEDGE~~

Submitted Electronically

<b>Do NOT Write in This Space - KCC USE ONLY</b>	Date Tested: _____	Results: _____	Date Plugged: _____	Date Repaired: _____	Date Put Back in Service: _____
	Review Completed by: _____ Comments: _____				
TA Approved: <input type="checkbox"/> Yes <input type="checkbox"/> Denied Date: _____					

**Mail to the Appropriate KCC Conservation Office:**

	KCC District Office #1 - 210 E. Frontview, Suite A, Dodge City, KS 67801	Phone 620.225.8888
	KCC District Office #2 / UPGS - 3450 N. Rock Road, Building 600, Suite 601, Wichita, KS 67226	Phone 316.630.4000
	KCC District Office #3 - 1500 SW Seventh Steet, Chanute, KS 66720	Phone 620.432.2300
	KCC District Office #4 - 2301 E. 13th Street, Hays, KS 67601-2651	Phone 785.625.0550

**CASING MECHANICAL INTEGRITY TEST**

Disposal  Enhanced Recovery:

Repressuring   
 Flood   
 Tertiary

Date injection started \_\_\_\_\_  
 API #15 - 129 - 00297-00-01

DOCKET # E-23, 270.1

SE NE SE, Sec 18, T 33 S, R 40 E

1980 (1961) Feet from South Section Line  
620 (629) Feet from East Section Line

Lease SANTA FE TRAIL B Well # 1-2  
 County MORTON

Operator: WYNN-CROSBY OPERATING, LTD. Operator License # 34929  
 Name & Address 14241 DALLAS PKWY, STE 800 Contact Person TIM HARPER  
DALLAS, TX 75254 Phone (806) 330-0273

Max. Auth. Injection Press. 1500 psi; Max. Inj. Rate 1500 bbl/d;  
 If Dual Completion - Injection above production \_\_\_\_\_ Injection below production \_\_\_\_\_

Size	Conductor	Surface	Production	Liner	Size	Tubing
Set at	<u>13 3/8"</u>	<u>25 1/8"</u>	<u>5 1/2"</u>		<u>2 3/8"</u>	
Cement Top	<u>113'</u>	<u>1489'</u>	<u>5850'</u>		Set at	<u>5055'</u>
" Bottom	<u>0</u>	<u>0</u>			Type	<u>SEALTEC</u>
DV/Perf.	<u>113'</u>	<u>1489'</u>	<u>5850'</u>			

Packer type BAKER LOCK SET TD (and plug back) 7391 (5310) ft. depth  
 Size 2 3/8" x 5 1/2" Set at 5055  
 Zone of injection MORROW B ft. to ft. 5152-64 Perf. or open hole Perf

Type Mit: Pressure  Radioactive Tracer Survey  Temperature Survey

F Time: Start 0 Min. 15 Min. 30 Min.  
 I  
 E Pressures: 300 300 300 Set up 1 System Pres. during test 0  
 L Set up 2 Annular Pres. during test 300  
 D Set up 3 Fluid loss during test 0 bbls.  
 D  
 A Tested: Casing  or Casing - Tubing Annulus   
 A

The bottom of the tested zone is shut in with A PACKER

Test Date 1/29/14 Using NICHOLS FLUIDSERVICE Company's Equipment

The operator hereby certifies that the zone between 0 feet and 5055 feet was the zone tested

Tim Harper Signature Title

The results were Satisfactory X, Marginal \_\_\_\_\_, Not Satisfactory \_\_\_\_\_

State Agent Kenny Sullivan Title Part II Witness: Yes X No \_\_\_\_\_

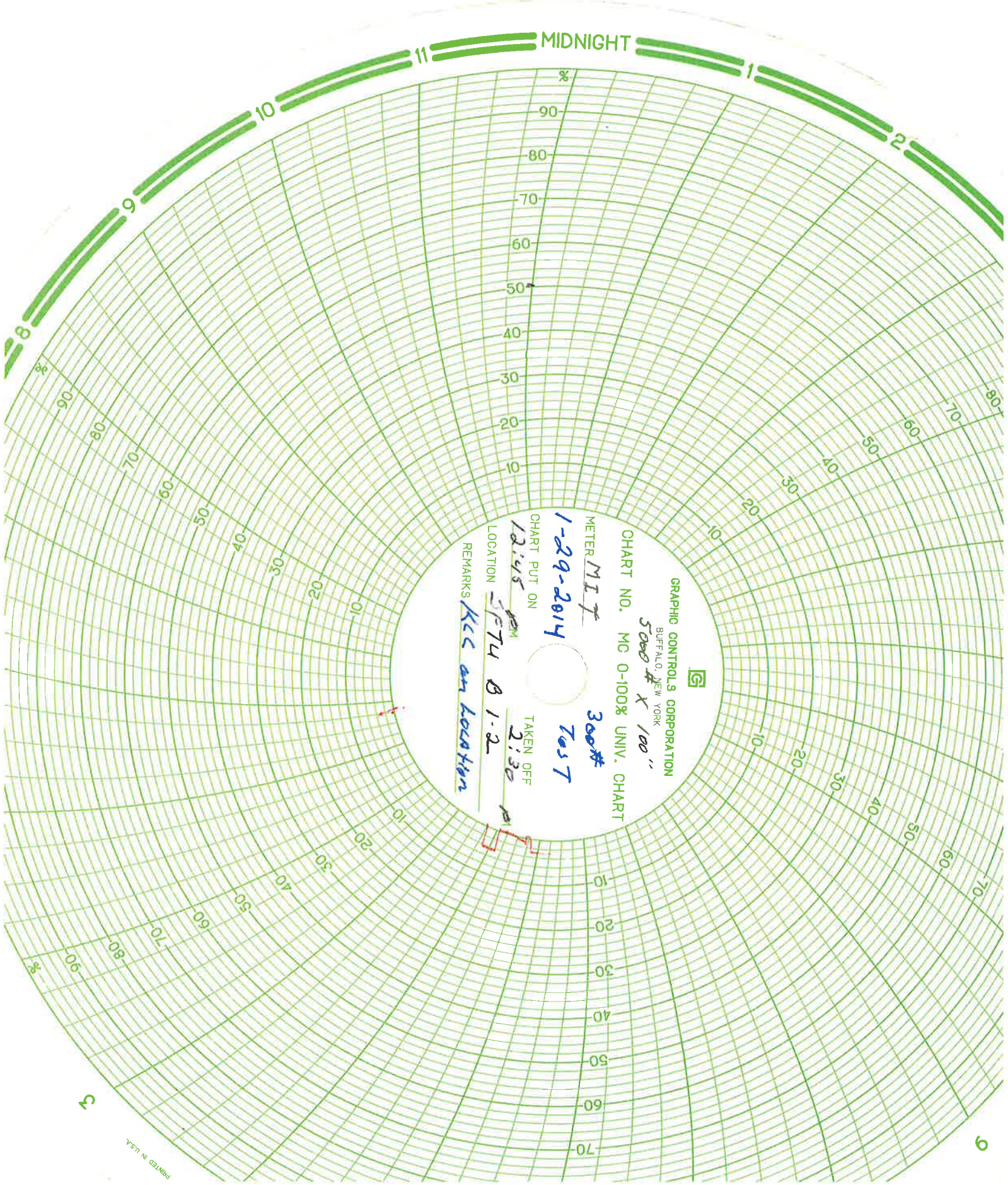
REMARKS: 5-YEAR RETEST

Origin. Conservation Div.;  KDHE/T;  Dist. Office;

Comp. **RECEIVED** **SCANNED** UICCC Form U-7 6/84

JAN 30 2014 37.17629  
 - 101.70306 **GPS entered**

KCC DODGE CITY



MIDNIGHT



GRAPHIC CONTROLS CORPORATION

BUFFALO, NEW YORK

CHART NO. MC 0-100% UNIV. CHART

5000 # X 100 "

METER MIT

300#

1-29-2014

TEST

CHART PUT ON

TAKEN OFF

LOCATION

1245 PM SFTU B 1-2

REMARKS

KCC on location

Conservation Division  
District Office No. 1  
210 E. Frontview, Suite A  
Dodge City, KS 67801



Phone: 620-225-8888  
Fax: 620-225-8885  
<http://kcc.ks.gov/>

Shari Feist Albrecht, Chair  
Jay Scott Emler, Commissioner  
Pat Apple, Commissioner

Sam Brownback, Governor

September 04, 2014

Jose L. Velez  
Wynn-Crosby Operating, Ltd.  
14241 DALLAS PKWY, STE 800  
DALLAS, TX 75254

Re: Temporary Abandonment  
API 15-129-00297-00-01  
SANTA FE TRAIL UNIT B 1 2  
SE/4 Sec.18-33S-40W  
Morton County, Kansas

Dear Jose L. Velez:

"Your temporary abandonment (TA) application for the well listed above has been approved. In accordance with K.A.R. 82-3-111 the TA status of this well will expire 09/04/2015.

- \* If you return this well to service or plug it, please notify the District Office.
- \* If you sell this well you are required to file a Transfer of Operator form, T-1.
- \* If the well will remain temporarily abandoned, you must submit a new TA application, CP-111, before 09/04/2015.

You may contact me at the number above if you have questions.

Very truly yours,

Michael Maier"