



TEMPORARY ABANDONMENT WELL APPLICATION

All blanks must be complete

OPERATOR: License# _____
 Name: _____
 Address 1: _____
 Address 2: _____
 City: _____ State: _____ Zip: _____ + _____
 Contact Person: _____
 Phone: (_____) _____
 Contact Person Email: _____
 Field Contact Person: _____
 Field Contact Person Phone: (_____) _____

API No. 15- _____
 Spot Description: _____
 _____ - _____ - _____ - _____ Sec. _____ Twp. _____ S. R. _____ E W
 _____ feet from N / S Line of Section
 _____ feet from E / W Line of Section
 GPS Location: Lat: _____, Long: _____
(e.g. xx.xxxxx) (e.g. -xxx.xxxxx)
 Datum: NAD27 NAD83 WGS84
 County: _____ Elevation: _____ GL KB
 Lease Name: _____ Well #: _____
 Well Type: (check one) Oil Gas OG WSW Other: _____
 SWD Permit #: _____ ENHR Permit #: _____
 Gas Storage Permit #: _____
 Spud Date: _____ Date Shut-In: _____

	Conductor	Surface	Production	Intermediate	Liner	Tubing
Size						
Setting Depth						
Amount of Cement						
Top of Cement						
Bottom of Cement						

Casing Fluid Level from Surface: _____ How Determined? _____ Date: _____
 Casing Squeeze(s): _____ to _____ w / _____ sacks of cement, _____ to _____ w / _____ sacks of cement. Date: _____
(top) (bottom) (top) (bottom)
 Do you have a valid Oil & Gas Lease? Yes No
 Depth and Type: Junk in Hole at _____ Tools in Hole at _____ Casing Leaks: Yes No Depth of casing leak(s): _____
(depth) (depth)
 Type Completion: ALT. I ALT. II Depth of: DV Tool: _____ w / _____ sacks of cement Port Collar: _____ w / _____ sack of cement
(depth) (depth)
 Packer Type: _____ Size: _____ Inch Set at: _____ Feet
 Total Depth: _____ Plug Back Depth: _____ Plug Back Method: _____

Geological Data:

Formation Name	Formation Top	Formation Base	Completion Information
1. _____	At: _____	to _____ Feet	Perforation Interval _____ to _____ Feet or Open Hole Interval _____ to _____ Feet
2. _____	At: _____	to _____ Feet	Perforation Interval _____ to _____ Feet or Open Hole Interval _____ to _____ Feet

UNDER PENALTY OF PERJURY I HEREBY ATTEST THAT THE INFORMATION CONTAINED HEREIN IS TRUE AND CORRECT TO THE BEST OF MY KNOWLEDGE

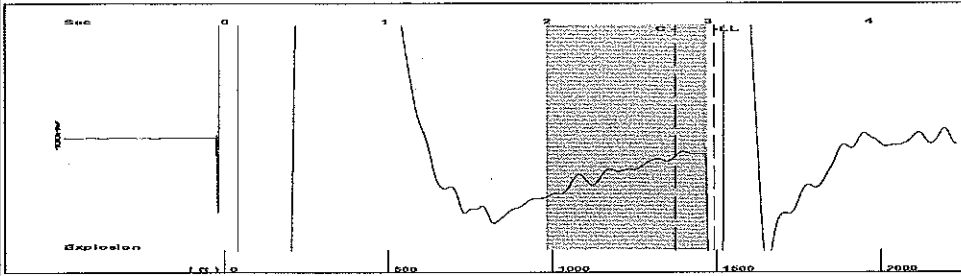
Submitted Electronically

Do NOT Write in This Space - KCC USE ONLY	Date Tested: _____	Results: _____	Date Plugged: _____	Date Repaired: _____	Date Put Back in Service: _____
	Review Completed by: _____ Comments: _____				
TA Approved: <input type="checkbox"/> Yes <input type="checkbox"/> Denied Date: _____					

Mail to the Appropriate KCC Conservation Office:

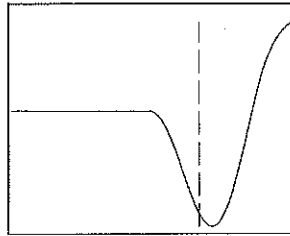
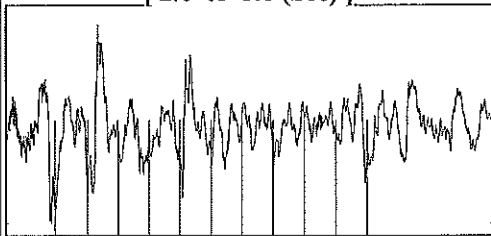
	KCC District Office #1 - 210 E. Frontview, Suite A, Dodge City, KS 67801	Phone 620.225.8888
	KCC District Office #2 / UPGS - 3450 N. Rock Road, Building 600, Suite 601, Wichita, KS 67226	Phone 316.630.4000
	KCC District Office #3 - 1500 SW Seventh Steet, Chanute, KS 66720	Phone 620.432.2300
	KCC District Office #4 - 2301 E. 13th Street, Hays, KS 67601-2651	Phone 785.625.0550

Group: MyWells Well: Black 1A-3 (acquired on: 09/08/14 13:13:10)



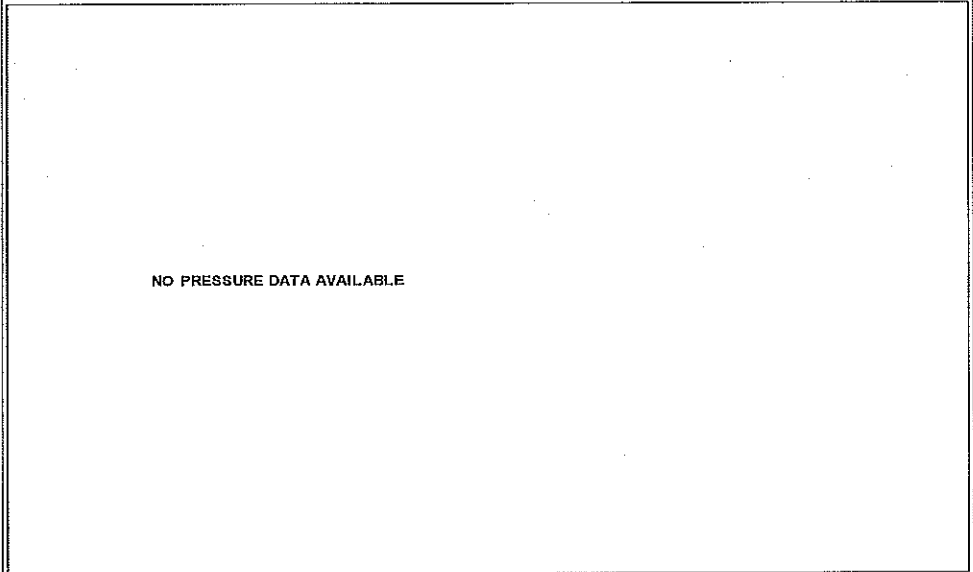
Filter Type High Pass Automatic Collar Count Yes Time 3.036 sec
 Manual Acoustic Veloc 986.003 ft/s Manual JTS/sec 15.5521 Joints 47.0177 Jts
 Depth 1490.46 ft

[2.0 to 3.0 (Sec)]



Analysis Method: Automatic

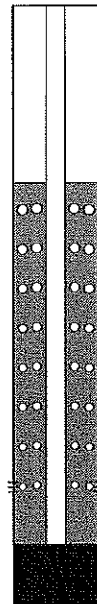
Group: MyWells Well: Black 1A-3 (acquired on: 09/08/14 13:13:10)



Change in Pressure 407.38 psi NONE
 Range 0 - ? psi
 Change in Time 2.75 min

Group: MyWells Well: Black 1A-3 (acquired on: 09/08/14 13:13:10)

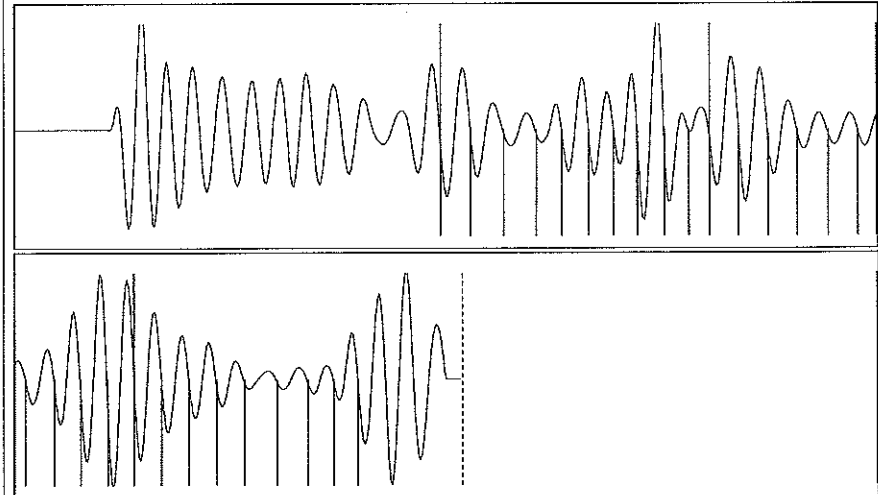
Production Current Potential Casing Pressure
 Oil *- BBL/D 5118.8 psi (g)
 Water *- BBL/D Casing Pressure Buildup
 Gas *- Mscf/D 407.4 psi
 2.75 min
 IPR Method Vogel Gas/Liquid Interface Pressure
 PBHP/SBHP *- 5315.1 psi (g)
 Production Efficiency 0.0
 Oil 40 deg.API
 Water 1.05 Sp.Gr.H2O
 Gas 0.70 Sp.Gr.AIR
 Acoustic Velocity 981.858 ft/s
 Formation Submergence
 Total Gaseous Liquid Column HT (TVD) 4592 ft
 Equivalent Gas Free Liquid HT (TVD) 1454 ft
 Acoustic Test



Producing
 Annular Gas Flow 5917 Mscf/D
 % Liquid 19 %
 Pump Intake 5608.7 psi (g)
 Producing BHP 5459.8 psi (g)
 Static BHP *- psi (g)

Liquid Level Depth 1490.46 ft
 Pump Intake Depth 6082.00 ft
 Formation Depth 5350.00 ft

Group: MyWells Well: Black 1A-3 (acquired on: 09/08/14 13:13:10)



Acoustic Velocity 981.858 ft/s Joints counted 28
 Joints Per Second 15.4867 jts/sec Joints to liquid level 47.0177
 Depth to liquid level 1490.46 ft Filter Width 13.5521 17.5521
 Automatic Collar Count Yes Time to 1st Collar 0.988 2.796

Conservation Division
District Office No. 1
210 E. Frontview, Suite A
Dodge City, KS 67801



Phone: 620-225-8888
Fax: 620-225-8885
<http://kcc.ks.gov/>

Shari Feist Albrecht, Chair
Jay Scott Emler, Commissioner
Pat Apple, Commissioner

Sam Brownback, Governor

September 18, 2014

Sarah Rodriguez
Chesapeake Operating, Inc.
6100 N WESTERN AVE
PO BOX 18496
OKLAHOMA CITY, OK 73118-0496

Re: Temporary Abandonment
API 15-081-21101-00-00
MLP BLACK A-1-3
SE/4 Sec.03-30S-34W
Haskell County, Kansas

Dear Sarah Rodriguez:

"Your temporary abandonment (TA) application for the well listed above has been approved. In accordance with K.A.R. 82-3-111 the TA status of this well will expire 09/18/2015.

- * If you return this well to service or plug it, please notify the District Office.
- * If you sell this well you are required to file a Transfer of Operator form, T-1.
- * If the well will remain temporarily abandoned, you must submit a new TA application, CP-111, before 09/18/2015.

You may contact me at the number above if you have questions.

Very truly yours,

Michael Maier"