



TEMPORARY ABANDONMENT WELL APPLICATION

OPERATOR: License# _____
 Name: _____
 Address 1: _____
 Address 2: _____
 City: _____ State: _____ Zip: _____ + _____
 Contact Person: _____
 Phone: (_____) _____
 Contact Person Email: _____
 Field Contact Person: _____
 Field Contact Person Phone: (_____) _____

API No. 15- _____
 Spot Description: _____
 _____ - _____ - _____ - _____ Sec. _____ Twp. _____ S. R. _____ E W
 _____ feet from N / S Line of Section
 _____ feet from E / W Line of Section
 GPS Location: Lat: _____, Long: _____
(e.g. xx.xxxxx) (e.g. -xxx.xxxxx)
 Datum: NAD27 NAD83 WGS84
 County: _____ Elevation: _____ GL KB
 Lease Name: _____ Well #: _____
 Well Type: (check one) Oil Gas OG WSW Other: _____
 SWD Permit #: _____ ENHR Permit #: _____
 Gas Storage Permit #: _____
 Spud Date: _____ Date Shut-In: _____

	Conductor	Surface	Production	Intermediate	Liner	Tubing
Size						
Setting Depth						
Amount of Cement						
Top of Cement						
Bottom of Cement						

Casing Fluid Level from Surface: _____ How Determined? _____ Date: _____
 Casing Squeeze(s): _____ to _____ w / _____ sacks of cement, _____ to _____ w / _____ sacks of cement. Date: _____
(top) (bottom) (top) (bottom)
 Do you have a valid Oil & Gas Lease? Yes No
 Depth and Type: Junk in Hole at _____ Tools in Hole at _____ Casing Leaks: Yes No Depth of casing leak(s): _____
(depth) (depth)
 Type Completion: ALT. I ALT. II Depth of: DV Tool: _____ w / _____ sacks of cement Port Collar: _____ w / _____ sack of cement
(depth) (depth)
 Packer Type: _____ Size: _____ Inch Set at: _____ Feet
 Total Depth: _____ Plug Back Depth: _____ Plug Back Method: _____

Geological Data:

Formation Name	Formation Top	Formation Base	Completion Information
1. _____	At: _____	to _____ Feet	Perforation Interval _____ to _____ Feet or Open Hole Interval _____ to _____ Feet
2. _____	At: _____	to _____ Feet	Perforation Interval _____ to _____ Feet or Open Hole Interval _____ to _____ Feet

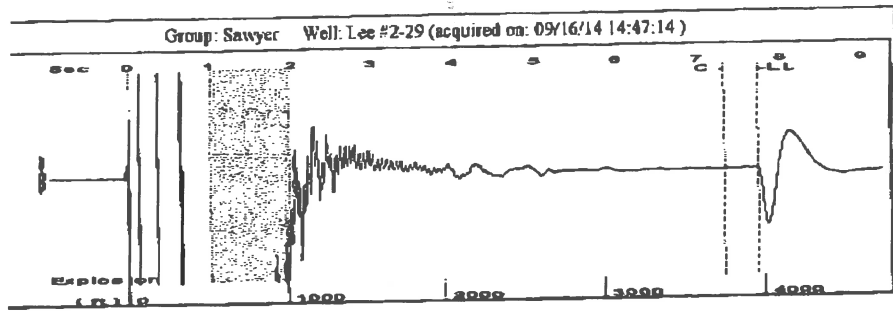
UNDER PENALTY OF PERJURY I HEREBY ATTEST THAT THE INFORMATION CONTAINED HEREIN IS TRUE AND CORRECT TO THE BEST OF MY KNOWLEDGE

Submitted Electronically

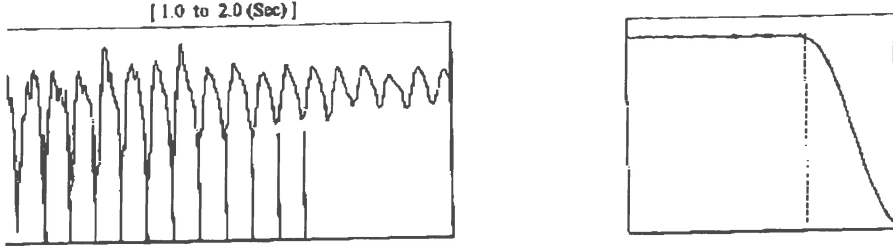
Do NOT Write in This Space - KCC USE ONLY	Date Tested: _____	Results: _____	Date Plugged: _____	Date Repaired: _____	Date Put Back in Service: _____
	Review Completed by: _____ Comments: _____				
TA Approved: <input type="checkbox"/> Yes <input type="checkbox"/> Denied Date: _____					

Mail to the Appropriate KCC Conservation Office:

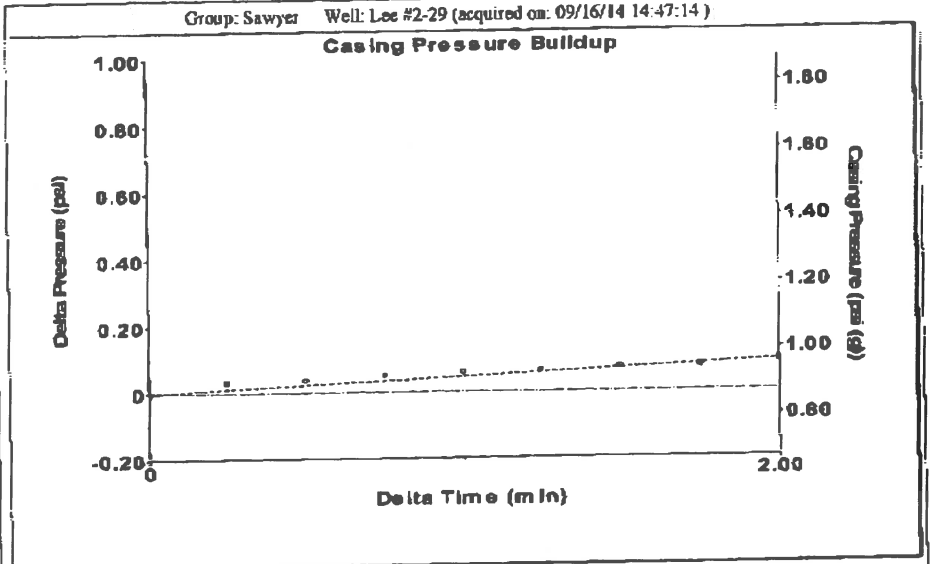
	KCC District Office #1 - 210 E. Frontview, Suite A, Dodge City, KS 67801	Phone 620.225.8888
	KCC District Office #2 / UPGS - 3450 N. Rock Road, Building 600, Suite 601, Wichita, KS 67226	Phone 316.630.4000
	KCC District Office #3 - 1500 SW Seventh Steet, Chanute, KS 66720	Phone 620.432.2300
	KCC District Office #4 - 2301 E. 13th Street, Hays, KS 67601-2651	Phone 785.625.0550



Filter Type High Pass Automatic Collar Count Yes Time 7.734 sec
 Manual Acoustic Velocity 1020 ft/s Manual JTS/sec 17.2414 Joints 133.951 Jts
 Depth 3962.26 ft



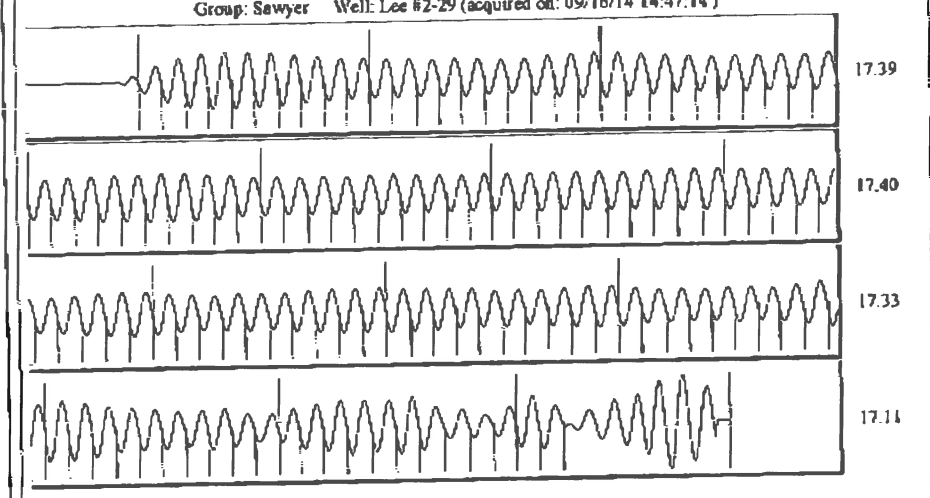
Analysis Method: Automatic



Change in Pressure 0.09 psi PT13440 Range 0 - 7 psi
 Change in Time 2.00 min

Group: Sawyer Well: Lee #2-29 (acquired on: 09/16/14 14:47:14)

Production Current Oil .-. Water .-. Gas .-. IPR Method Vogel PBHP/SBHP .-. Production Efficiency 0.0 Oil 40 deg.API Water 1.05 Sp.Gr.H2O Gas 0.96 Sp.Gr.AIR Acoustic Velocity 1024.63 ft/s Formation Submergence Total Gaseous Liquid Column HT (TVD) 564 ft Equivalent Gas Free Liquid HT (TVD) 471 ft Acoustic Test	Potential .-. BBU/D .-. BBU/D .-. Mac/D .-. .-.	Casing Pressure 0.9 psi (g) Casing Pressure Buildup 0.090 psi 2.00 min Gas/Liquid Interface Pressure 3.0 psi (g) Liquid Level Depth 3962.26 ft Pump Intake Depth 4526.00 ft Formation Depth 4494.00 ft	Producing Annular Gas Flow 5 Msc/D % Liquid 83 % Pump Intake 163.8 psi (g) Producing BHP 153.0 psi (g) Static BHP .- psi (g)
--	---	--	--



Acoustic Velocity	1024.63 ft/s	Joints counted	122
Joints Per Second	17.3197 jts/sec	Joints to liquid level	133.951
Depth to liquid level	3962.26 ft	Filter Width	15.2414
Automatic Collar Count	Yes	Time to 1st Collar	0.28
			19.2414
			7.324

Conservation Division
District Office No. 1
210 E. Frontview, Suite A
Dodge City, KS 67801



Phone: 620-225-8888
Fax: 620-225-8885
<http://kcc.ks.gov/>

Shari Feist Albrecht, Chair
Jay Scott Emler, Commissioner
Pat Apple, Commissioner

Sam Brownback, Governor

September 25, 2014

Rebecca George
F. G. Holl Company L.L.C.
9431 E CENTRAL STE 100
WICHITA, KS 67206-2563

Re: Temporary Abandonment
API 15-151-20714-00-00
LEE 2-29
NE/4 Sec.29-29S-13W
Pratt County, Kansas

Dear Rebecca George:

"Your temporary abandonment (TA) application for the well listed above has been approved. In accordance with K.A.R. 82-3-111 the TA status of this well will expire 09/25/2015.

- * If you return this well to service or plug it, please notify the District Office.
- * If you sell this well you are required to file a Transfer of Operator form, T-1.
- * If the well will remain temporarily abandoned, you must submit a new TA application, CP-111, before 09/25/2015.

You may contact me at the number above if you have questions.

Very truly yours,

Michael Maier"