



TEMPORARY ABANDONMENT WELL APPLICATION

All blanks must be complete

OPERATOR: License# _____
Name: _____
Address 1: _____
Address 2: _____
City: _____ State: _____ Zip: _____ + _____
Contact Person: _____
Phone: (_____) _____
Contact Person Email: _____
Field Contact Person: _____
Field Contact Person Phone: (_____) _____

API No. 15- _____
Spot Description: _____
____ - ____ - ____ - ____ Sec. _____ Twp. _____ S. R. _____ E W
_____ feet from N / S Line of Section
_____ feet from E / W Line of Section
GPS Location: Lat: _____, Long: _____
(e.g. xx.xxxxx) (e.g. -xxx.xxxxx)
Datum: NAD27 NAD83 WGS84
County: _____ Elevation: _____ GL KB
Lease Name: _____ Well #: _____
Well Type: (check one) Oil Gas OG WSW Other: _____
 SWD Permit #: _____ ENHR Permit #: _____
 Gas Storage Permit #: _____
Spud Date: _____ Date Shut-In: _____

	Conductor	Surface	Production	Intermediate	Liner	Tubing
Size						
Setting Depth						
Amount of Cement						
Top of Cement						
Bottom of Cement						

Casing Fluid Level from Surface: _____ How Determined? _____ Date: _____
Casing Squeeze(s): _____ to _____ w / _____ sacks of cement, _____ to _____ w / _____ sacks of cement. Date: _____
(top) (bottom) (top) (bottom)
Do you have a valid Oil & Gas Lease? Yes No
Depth and Type: Junk in Hole at _____ Tools in Hole at _____ Casing Leaks: Yes No Depth of casing leak(s): _____
(depth) (depth)
Type Completion: ALT. I ALT. II Depth of: DV Tool: _____ w / _____ sacks of cement Port Collar: _____ w / _____ sack of cement
(depth) (depth)
Packer Type: _____ Size: _____ Inch Set at: _____ Feet
Total Depth: _____ Plug Back Depth: _____ Plug Back Method: _____

Geological Data:

Formation Name	Formation Top	Formation Base	Completion Information
1. _____	At: _____	to _____ Feet	Perforation Interval _____ to _____ Feet or Open Hole Interval _____ to _____ Feet
2. _____	At: _____	to _____ Feet	Perforation Interval _____ to _____ Feet or Open Hole Interval _____ to _____ Feet

UNDER PENALTY OF PERJURY I HEREBY ATTEST THAT THE INFORMATION CONTAINED HEREIN IS TRUE AND CORRECT TO THE BEST OF MY KNOWLEDGE

Submitted Electronically

Do NOT Write in This Space - KCC USE ONLY	Date Tested: _____	Results: _____	Date Plugged: _____	Date Repaired: _____	Date Put Back in Service: _____
	Review Completed by: _____ Comments: _____				
TA Approved: <input type="checkbox"/> Yes <input type="checkbox"/> Denied Date: _____					

Mail to the Appropriate KCC Conservation Office:

	KCC District Office #1 - 210 E. Frontview, Suite A, Dodge City, KS 67801	Phone 620.225.8888
	KCC District Office #2 / UPGS - 3450 N. Rock Road, Building 600, Suite 601, Wichita, KS 67226	Phone 316.630.4000
	KCC District Office #3 - 1500 SW Seventh Steet, Chanute, KS 66720	Phone 620.432.2300
	KCC District Office #4 - 2301 E. 13th Street, Hays, KS 67601-2651	Phone 785.625.0550

General

Well ID - * -
 Well Jennie 1-10H
 Company SandRidge
 Operator - * -
 Lease Name Jennie 1-10H
 Elevation 0.00 ft
 Production Method Gas Lift

Comment

Surface Unit

Manufacturer - * -
 Unit Class Conventional
 Unit API Number - * -
 Measured Stroke Length - * - in
 Rotation CW
 Counter Balance Effect (Weights Level) - * - Klb
 Weight Of Counter Weights 2000 lb

Prime Mover

Motor Type Electric
 Rated HP - * - HP
 Run Time 24 hr/day
 MFG/Comment - * -

Electric Motor Parameters

Rated Full Load AMPS - * -
 Rated Full Load RPM - * -
 Synchronous RPM 1200
 Voltage - * -
 Hertz 60
 Phase 3
 Power Consumption 5
 Power Demand 8 \$/KW

Tubulars

Tubing OD 2.875 in
 Casing OD 7.000 in
 Average Joint Length 31.700 ft
 Anchor Depth - * - ft
 Kelly Bushing 0.00 ft

Pump

Plunger Diameter - * - in
 Pump Intake Depth - * - ft
 **Total Rod Length > Pump Depth

Polished Rod

Polished Rod Diameter - * - in

Rod String

	Top Taper	Taper 2	Taper 3	Taper 4	Taper 5	Taper 6
Rod Type	- * -	- * -	- * -	- * -	- * -	- * -
Rod Length	- * -	- * -	- * -	- * -	- * -	- * - ft
Rod Diameter	- * -	- * -	- * -	- * -	- * -	- * - in
Rod Weight	0.0	0.0	0.0	0.0	0.0	0.0 lb

Total Rod Length 0
 Total Rod Weight 0.00

Damp Up 0.05
 Damp Down 0.05

Conditions

Pressure

Static BHP 529.4 psi (g)
 Static BHP Method Acoustic
 Static BHP Date 09/18/2014

Producing BHP 529.4 psi (g)
 Producing BHP Method Acoustic
 Producing BHP Date 09/18/2014
 Formation Depth 5026.00 ft

Surface Producing Pressures

Tubing Pressure 435.0 psi (g)
 Casing Pressure 322.6 psi (g)

Casing Pressure Buildup

Change in Pressure 0.012 psi
 Over Change in Time 1.75 min

Production

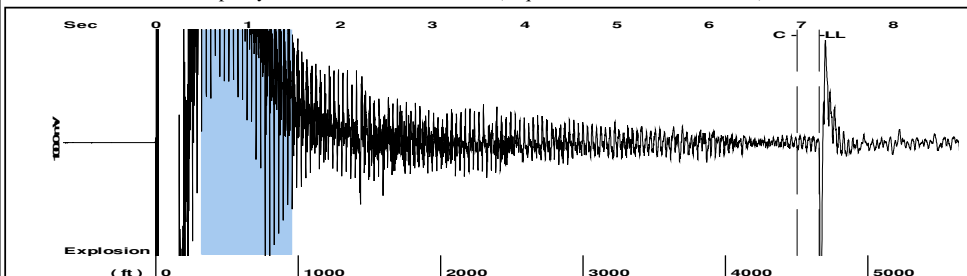
Oil Production - * - BBL/D
 Water Production - * - BBL/D
 Gas Production - * - Mscf/D
 Production Date - * -

Temperatures

Surface Temperature 70 deg F
 Bottomhole Temperature 150 deg F

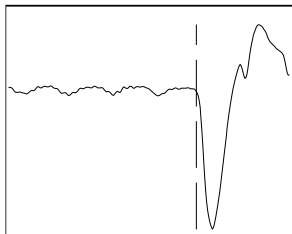
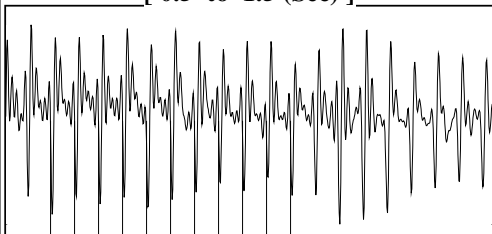
Fluid Properties

Oil API 40 deg.API
 Water Specific Gravity 1.05 Sp.Gr.H2O

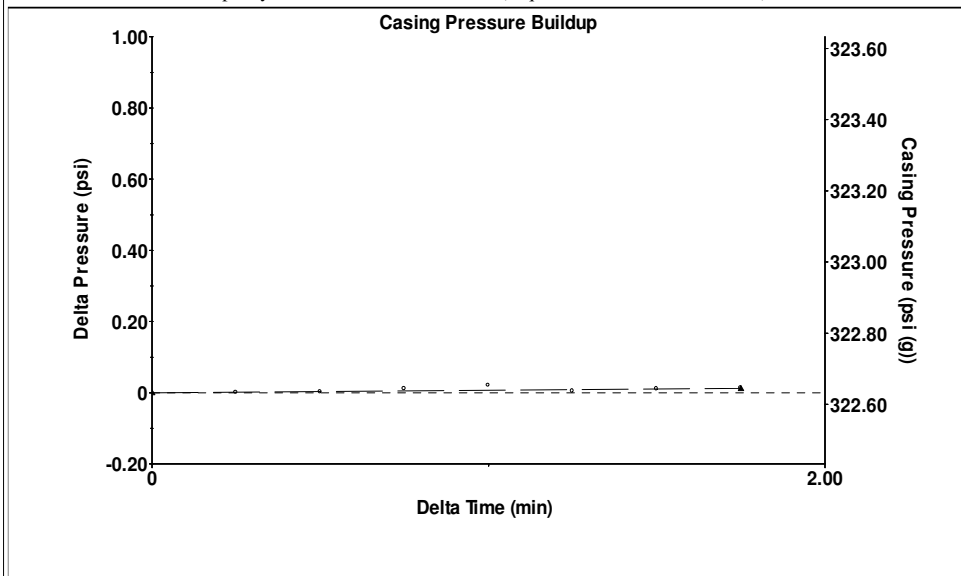


Filter Type Automatic Collar Count Yes Time 7.195 sec
 Manual Acoustic Velocity 1286 ft/s Manual JTS/sec 20.284 Joints 146.946 Jts
 Depth 4658.19 ft

[0.5 to 1.5 (Sec)]



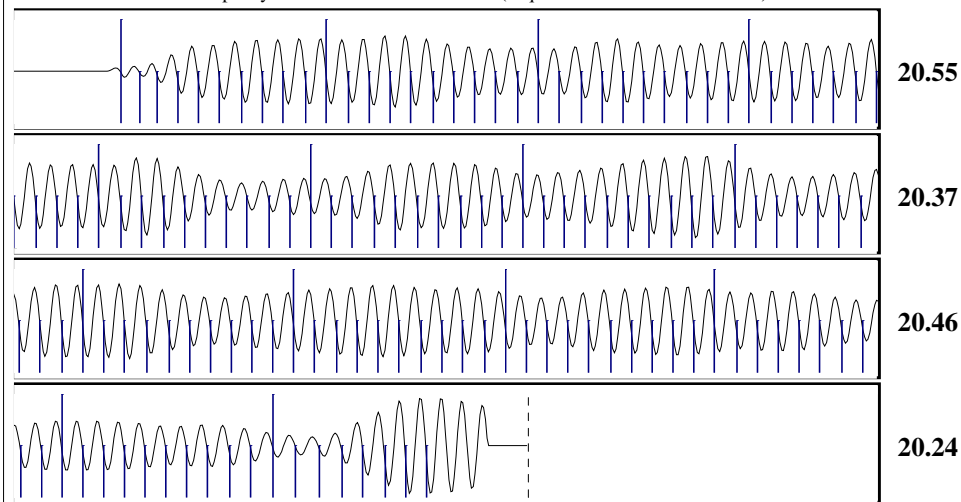
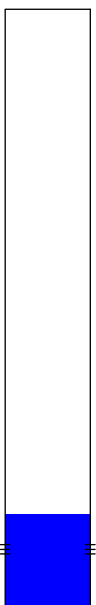
Analysis Method: Manual



Change in Pressure 0.01 psi PT15218
 Change in Time 1.75 min Range 0 - ? psi

Production	Potential	Casing Pressure	Static
Current		322.6 psi (g)	
Oil - *-	- *- BBL/D	Casing Pressure Buildup	Oil Column Height
Water - *-	- *- BBL/D	0.012 psi	MD 0 ft
Gas - *-	- *- Mscf/D	1.75 min	
IPR Method	Vogel	Gas/Liquid Interface Pressure	Water Column Height
PBHP/SBHP	- *-	362.2 psi (g)	MD 368 ft
Production Efficiency	0.0	Liquid Level Depth	Tubing Intake Depth
		4658.19 ft	- *- ft
Oil 40 deg.API		Formation Depth	
Water 1.05 Sp.Gr.H2O		5026.00 ft	
Gas 0.68 Sp.Gr.AIR			
Acoustic Velocity	1294.84 ft/s	Static BHP	529.4 psi (g)

Acoustic Test. No pump intake depth, tubing joints was listed in wellview.



Acoustic Velocity 1294.84 ft/s Joints counted 137
 Joints Per Second 20.4234 jts/sec Joints to liquid level 146.946
 Depth to liquid level 4658.19 ft Filter Width 18.284 22.284
 Automatic Collar Count Yes Time to 1st Collar 0.248 6.956

September 25, 2014

Tiffany Golay
SandRidge Exploration and Production LLC
123 ROBERT S. KERR AVE
OKLAHOMA CITY, OK 73102-6406

Re: Temporary Abandonment
API 15-007-23817-01-00
Jennie 1-10H
NE/4 Sec.10-35S-10W
Barber County, Kansas

Dear Tiffany Golay:

"Your temporary abandonment (TA) application for the well listed above has been approved. In accordance with K.A.R. 82-3-111 the TA status of this well will expire 09/25/2015.

- * If you return this well to service or plug it, please notify the District Office.
- * If you sell this well you are required to file a Transfer of Operator form, T-1.
- * If the well will remain temporarily abandoned, you must submit a new TA application, CP-111, before 09/25/2015.

You may contact me at the number above if you have questions.

Very truly yours,

Michael Maier"