



VINCENT OIL CORPORATION



Scale 1:240 Imperial

Well Name: Droste 2-10
 Surface Location: 1350 FNL 2105 FEL T28S R23W Sec. 10
 Bottom Location:
 API: 15-057-20932
 License Number:
 Spud Date: 5/6/2014 Time: 5:37 PM
 Region:
 Drilling Completed: 5/14/2014 Time: 12:00 PM
 Surface Coordinates: 1350 FNL & 2105 FEL
 Bottom Hole Coordinates:
 Ground Elevation: 2461.00ft
 K.B. Elevation: 2473.00ft
 Logged Interval: 4150.00ft To: 5138.00ft
 Total Depth: 5138.00ft
 Formation: Morrow Sand
 Drilling Fluid Type: Chemical Mud

OPERATOR

Company: Vincent Oil Corporation
 Address: 155 N Market
 Ste 700
 Wichita, KS 67202
 Contact Geologist: Dick Jordan
 Contact Phone Nbr: 316-262-3573
 Well Name: Droste 2-10
 Location: 1350 FNL 2105 FEL T28S R23W Sec. 10 API: 15-057-20932
 Pool: Field:
 State: KANSAS Country: USA

CONTRACTOR

Contractor: Duke Drilling Co, Inc.
 Rig #: 1
 Rig Type: Rotary
 Spud Date: 5/6/2014 Time: 5:37 PM
 TD Date: 5/14/2014 Time: 12:00 PM
 Rig Release: 5/16/2014 Time: 6:00 PM

ELEVATIONS

ELEVATIONS

K.B. Elevation: 2473.00ft
K.B. to Ground: 12.00ft

Ground Elevation: 2461.00ft

SURFACE CO-ORDINATES

Well Type: Vertical
Longitude: -99.8212454
N/S Co-ord: 1350 FNL
E/W Co-ord: 2105 FEL
Latitude: 37.6274497

DRILLING FLUID SUMMARY

Type	Date	From Depth	To Depth
Chemical Mud	5/15/2014	3800.00ft	5138.00ft

OPEN HOLE LOGS

Logging Company: Nabors Completion and Production Services Co.
Logging Engineer: Jeff Leubbers
Truck #:
Logging Date: 5/15/2014
Logs Run: 0
Time Spent:
Logs Run Successful: 0

LOGS RUN

Tool	Logged Interval	Logged Interval	Hours	Remarks	Run #
Dual Induction	0.00ft	5138.00ft	2.00		1
Comp. Den/Neu	4200.00ft	5138.00ft	2.00		1
Sonic	600.00ft	5138.00ft	3.00		2
Micro	4200.00ft	5138.00ft	1.00	Ran separate of Sonic to log bot	3

LOGGING OPERATION SUMMARY

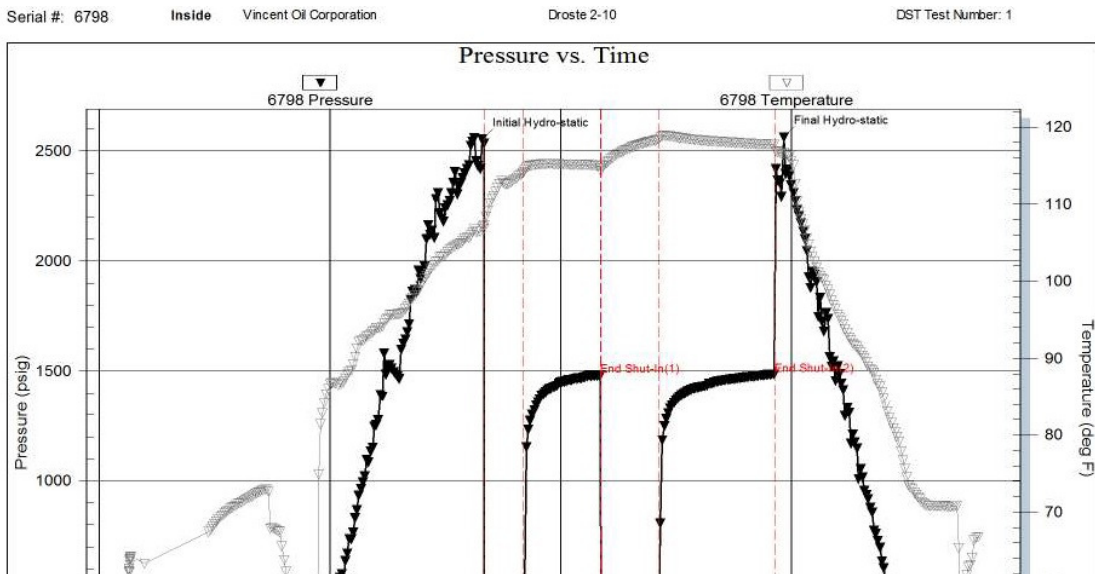
Date	From	To	Description Of Operation
5/15/2014	0.00ft	5138.00ft	Logs ran successfully

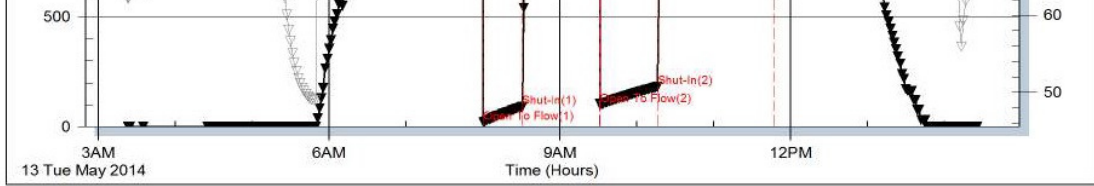
CASING SUMMARY

	Surface	Intermediate	Main		
Bit Size	12.25 in				
Hole Size			7.88 in		
	Size	Set At	Type	# of Joints	Drilled Out At
Surf Casing	8.625 in	646 ft	23#	18	5/7/2014 6:00 PM
Int Casing					
Prod Casing	5.5 in	5136 ft	14#	122	

CASING SEQUENCE

Type	Hole Size	Casing Size	At
	0.00 in	0.00	0.00 ft

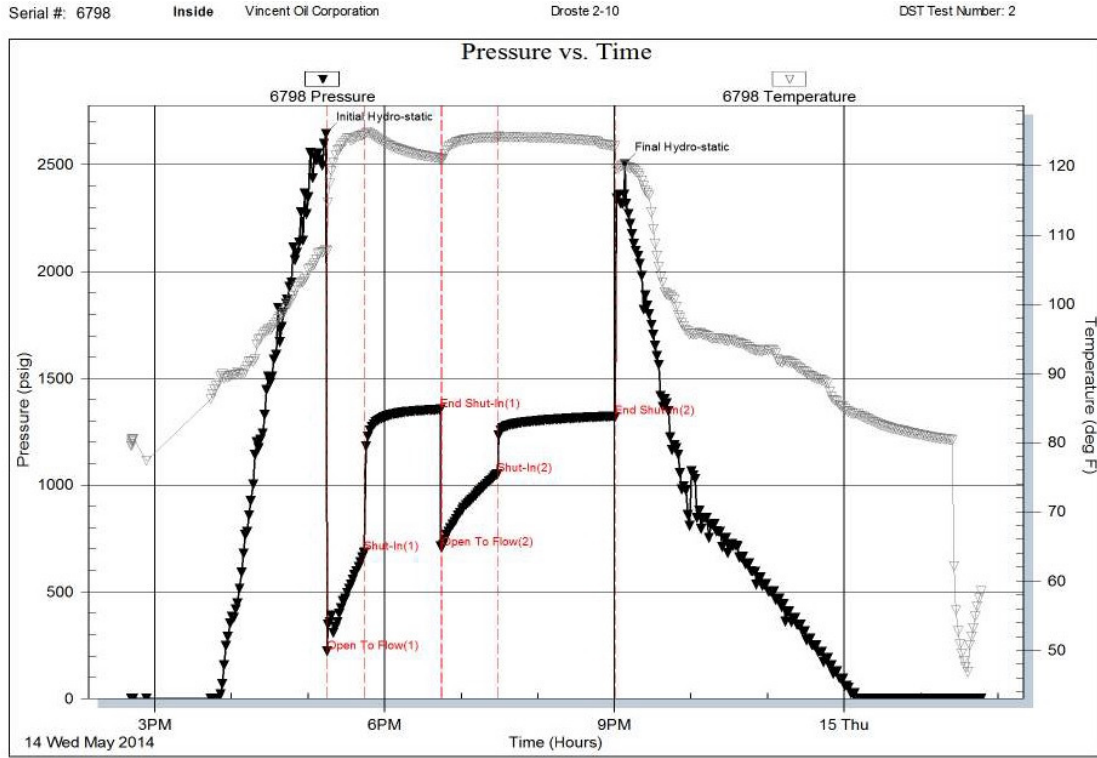




Trilobite Testing, Inc

Ref. No: 58987

Printed: 2014.05.13 @ 14:58:57



Trilobite Testing, Inc

Ref. No: 58988

Printed: 2014.05.15 @ 07:42:47

ROCK TYPES



ACCESSORIES

MINERAL

- ⊥ Calcareous
- ▲ Chert, dark
- Ferruginous, grains or p
- P Pyrite
- Sandy
- Silty
- △ Chert White

FOSSIL

- Crinoids
- F Fossils < 20%
- ◊ Oolite

STRINGER

- Limestone

TEXTURE

- C Chalky
- e Earthy

MISC

- ⋈ Fractures
- ▨ Veins

OTHER SYMBOLS

POROSITY TYPE

- x Intercrystalline
- φ Interoolitic
- V Vuggy
- P Pinpoint
- ∩ Moldic
- O Organic
- F Fracture
- e Earthy
- ▣ Fenestral

OIL SHOWS

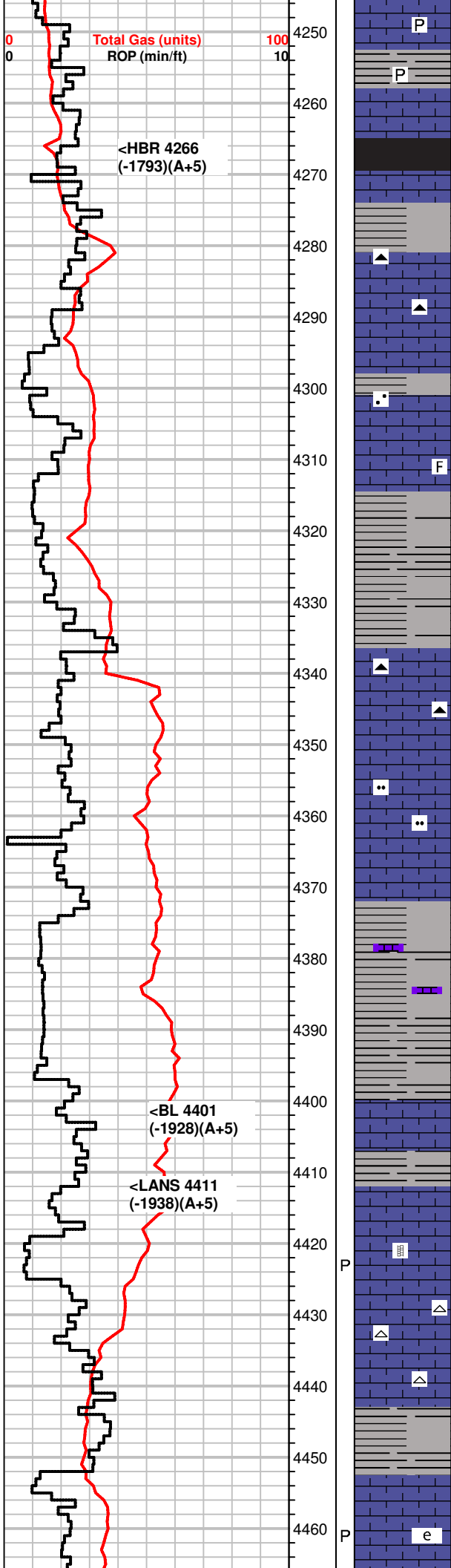
- Even Stn
- Spotted Stn 50 - 75 %
- Spotted Stn 25 - 50 %
- Spotted Stn 1 - 25 %
- Questionable Stn
- D Dead Oil Stn
- Fluorescence

INTERVALS

- Core
- DST

Curve Track #01								
Total Gas (units)	—							
ROP (min/ft)	—							
	Intervals	Types	Lithology					

	Cored Interval Depth Int DST Interval	Porosity (%)	Interpreted	Oil Shows	Geological Descriptions	Comment
1:240 Imperial Total Gas (units) ROP (min/ft)	0 100 0 10					
	4060					
	4070					
	4080				GEO ON LOCATION @ 1:00PM 5/11/2014 GAS DETECTOR by BLUESTEM LABS (BLOODHOUND UNIT)	
	4090					
	4100					
	4110					
	4120		F		MS, crm to off white, hard to firm, sparse fossils, some calcite veins	
	4130					
	4140				MS, A.A. some gray, NS	
	4150					
	4160		••	I	MS-WS, crm to gray, soft, some friable, gritty txt in part, calcite, crinoids, NS	
	4170					
	4180				MS, crm to gray, firm, dense, some friable, NS	
	4190			•	MS-WS, tan to crm, f-xln, dense, fossilif in part, sandy txt, calcite Some SH, gray	
	4200		F			
	4210					
	4220		△	△	MS-WS, tan to crm, some lt. gray, f-xln, firm, some pcs w/ co calcite pcs Chert, white	
	4230		△			
	4240				WS-MS, crm to tan, some gray A.A., rare fossils, some w/ oolitic txt.	



Some Sh, gray, green, pyrite

P

P

MS, crm to tan, vf-xln, dense, earthy in part

SH, blk, gray

MS, crm to tan, f-xln, some gray, dense, hard, fossils, few pcs tan w/ gray chert on edges, calcite pcs, Chert, gray
 Some SH, gray, green

▲

▲

MS, crm to tan, f-xln, firm, NS

■

SH, gray, green, sandy/silty in part

MS, crm to gray, some tan, f-xln, firm to hard, fossilif in part.

F

SH, blk to gray, some green

▲

MS, crm to gray, f-xln, hard, fusulinids, brachs, Chert, gray

▲

MS-WS, crm to tan, m-xln, gritty txt, firm to hard, dense, NS, some gray, silty txt in MS

■

■

MS, crm to tan, earthy, dense, hard, some chalky pcs, mottled in part, NS

SH, gray, green, some red

MS, brn, f-xln, hard, dense,

Sh, gray to brn

MS, crm f-xln, firm to hard, NS

P

MS, crm, A.A., calcite veins, NS

▲

▲

MS, crm to gray, micro oolitic, glauc specs, firm to hard pcs, NS
 Chert, white

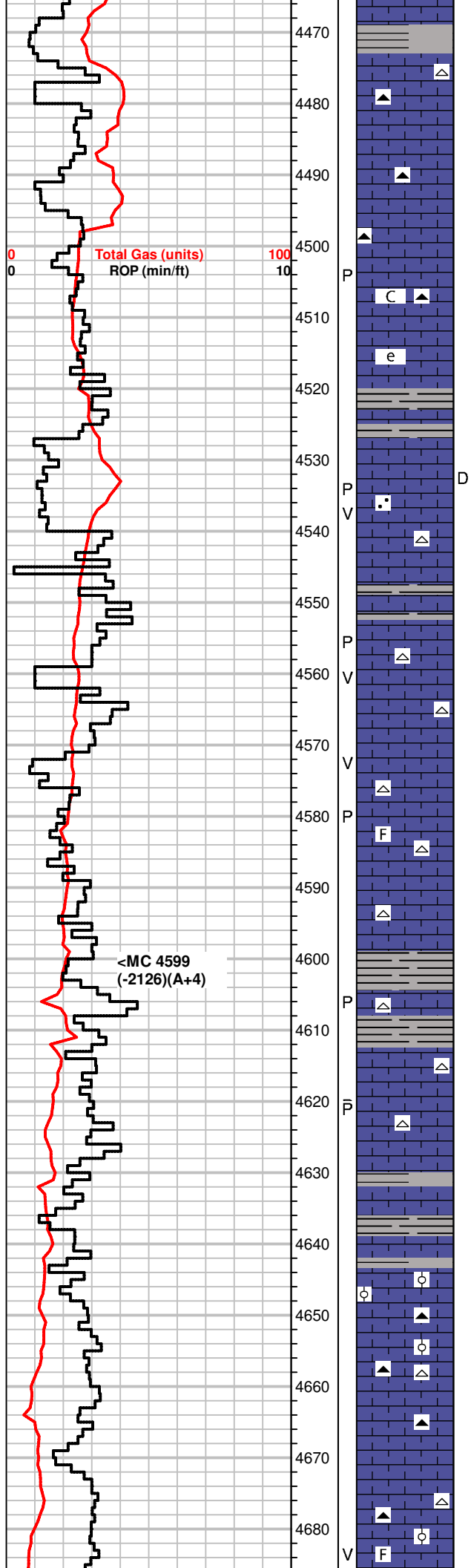
▲

SH, gray, brn, rare blk

P

e

MS, gray to crm, f-xln, earthy crm pcs, dense, NS



4470 MS, crm, some gray, f-xln, some mottled pcs scatt., hard dense, rare fossilif pcs, Chert, opaque

4480 MS, crm, some gray, f-xln, some mottled pcs scatt., hard dense, rare fossilif pcs, Chert, opaque

4490 MS, crm, some gray, f-xln, some mottled pcs scatt., hard dense, rare fossilif pcs, Chert, opaque

4500 MS-WS, crm to lt. brn, mottled pcs, gritty txt, firm, friable pcs, rare fossils, sub oolitic brn pcs
Chert, brn

4510 MS, crm to gray, f to m-xln, earthy/chalky txt in part, soft, hard crm pcs, dense, fossilif (micro oolitic in part)

4520 SH, gray, green

4530 MS, influx gray, crm gritty/ sandy txt, hard, scatt dead brn stn, Chert, tan

4540 MS, crm to tl. tan, mic to f-xln, dense, fossilif, rare calcite veins, partly oolitic, Chert, tan, white

4550 MS, crm to tl. tan, mic to f-xln, dense, fossilif, rare calcite veins, partly oolitic, Chert, tan, white

4560 MS, crm to tl. tan, mic to f-xln, dense, fossilif, rare calcite veins, partly oolitic, Chert, tan, white

4570 MS, crm to tl. tan, mic to f-xln, dense, fossilif, rare calcite veins, partly oolitic, Chert, tan, white

4580 MS, crm to lt. tan, mic to f-xln, dense, some fossils, influx in crm pcs, chalky pcs scatt, Chert, white some edges weathered, gray, micro oolitic pcs

4590 MS, crm to lt. tan, mic to f-xln, dense, some fossils, influx in crm pcs, chalky pcs scatt, Chert, white some edges weathered, gray, micro oolitic pcs

4600 SH, rare blk, gray

4610 MS, crm, tan, gray, f to m-xln, hard, some pyrite, scatt. fossils. rare Chert, white

4620 Some SH, gray

4630 MS, gray to crm, f-xln, dense, NS, Chert, white

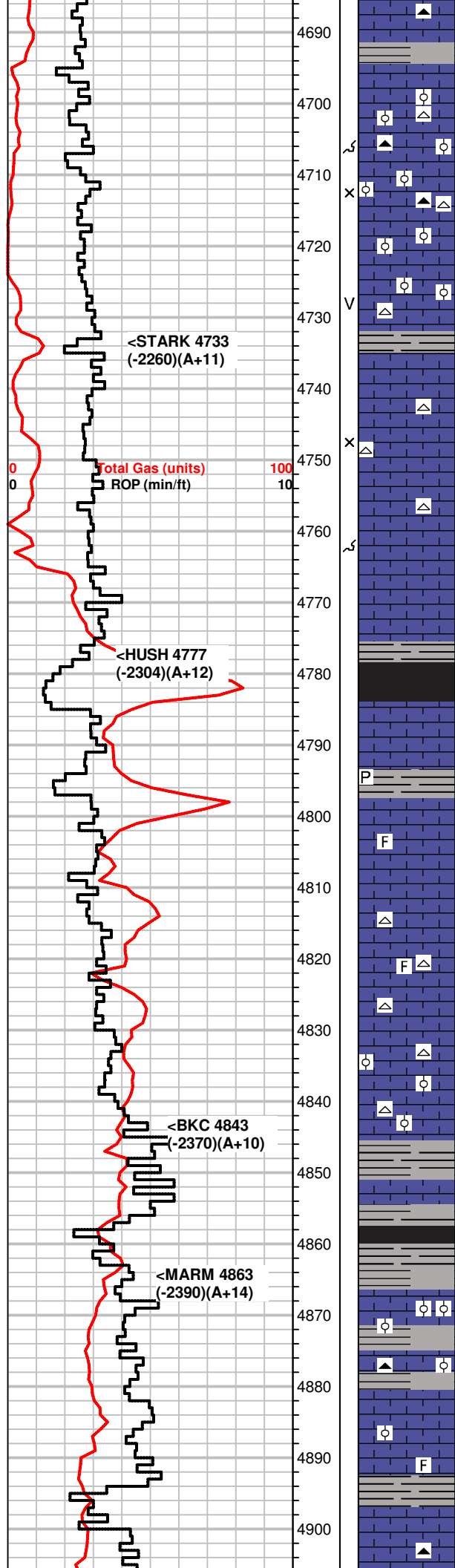
4640 SH, gray, rare blk,

4650 MS, crm to off white, earthy, some chalky pcs, scatt brn, suboolitic pcs, hard, NS
Chert, gray

4660 MS, crm to gray, f-xln, dense, hard, barren, NS
Chert, brn, white

4670 MS, crm to gray, f-xln, dense, hard, barren, NS
Chert, brn, white

4680 MS, crm to lt. gray, mic to f-xln, hard to frim, some fossils, calcite veins, scatt chalky pcs



Chert, white, gray

MS-WS, crm to lt. gray, f-xln, dense, some pcs w/ calcite nodules, rare brn oolitic pcs, m-gr ooids, Chert, white, gray

MS, crm to lt. gray, firm to hrad, some sli chalky, rare oolitic pcs, brn, m-gr ooids
Chert, white, gray

SH, gray, green, some silty pcs

SH, gray, green

MS, crm, f-xln, some earthy txt, cahlyk pcs throughout, rare gray
MS, hard, crinoids,
Chert, white,

MS, crm to scatt lt. brn, f-xln, firm to hard, dense, mineral fluor, NS

SH, blk, gray, green, some gas bubbles

SH, gray, rare blk, pyrite

MS, crm to brn, some gray, f-xln, hard, rare mottled pcs w/ fossils, NS

MS, crm to brn, f-xln, fossilif, oolitic in part, sli chalky pcs scatt.
Chert, white

MS, crm, earthy, silty pcs throughout, scatt gray f-xln pcs, some silty, rare micro oolitic,
Chert, white

SH, dk. gray

SH, blk, gray, some silty and striated pcs

MS-WS, crm to tan, f-xln some pcs oolitic in part, fossilif., hard, rare friable
Chert, brn, fossilif.

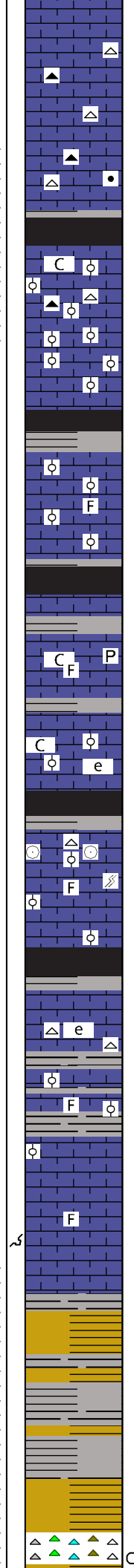
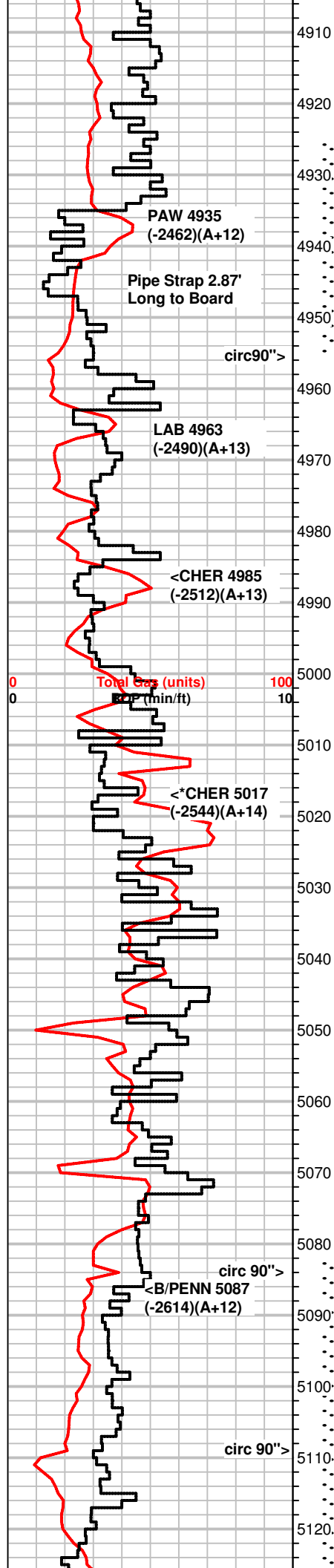
MS, crm chalky to f-xln, some dense, rare fossilif pcs, NS

SH, blk, gray, pyrite
MS, srm to brn, some gray, f-xln, hard, rare mottled pcs w/ fossils, barren, NS

+8 UGK, shale gas

+60 UGK, shale gas, 42 unit recycle

DST #1 4925'-4955'
30-60-45-90
WB, BOB/29"
NBB
WB BUILT TO 8 IN
NBB
REC:
20' SMCW



MS, crm to lt. tan, f-xln, firm, some fossils, Chert, white, gray, fossilif. Some SH, brn, gray

MS, gray to crm, f-xln, firm to hard, dense, NS SH, gray, brn,

MS, crm, some chalky, mottled pcs, black specs, some sub oolitic pcs, Chert, white

SH, blk, gray, green,

MS-WS, crm, f-xln, some chalky, oolitic, m-gr., some dense, no odor, mineral fluor, NS Chert, gray, tan, fossilif.

MS, crm to brn, f-xln to dense, some chalky, some m-gr oolitic w/ lt. edge stn in dry.

SH, blk, gray, some greenish

MS, crm to tan, f-xln to earthy, firm, some chalky pcs, rare fossilif/oolitic pcs, lt. edge stn in dry Chert, white, fossilif, gray

SH, blk, carbonaceous, dk, gray, lt. green

MS, brn, m-xln, dense, some gray to crm pcs, f-xln, silty, NS

MS-WS, crm to tan, chalky txt to f-xln, firm to hard, pyrite, fossilif, NS Some SH, blk, dk. gray

Sh, gray MS, crm to gray, some earthy/chalky txt, fossilif, rare dense sub oolitic pcs, NS

SH, gray, green, rare blk pcs MS, crm to brn, f-xln, firm to hard, fossilif in part(crinoids), some fracturing, Chert, tan

SH, blk, gray, MS, crm to lt. gray, fossilif, some brn pcs, A.A., NS

MS, crm to gray, to brn, f-xln, A.A., fossils(brachs), dense, NS SH, rare blk, gray

SH, dk. gray, to gray MS, crm, f-xln to earthy, flash odor in bag, no stn no fluor, Chert, white

SH, green, gray MS, crm to brn, f to m-xln, hard to firm, oolitic pcs, m-gr ooids, dense, some fossils, NS Some SH, gray to green

MS, crm to brn, A.A., rare oolitic pcs, barren, NS

MS, crm to some brn, f-xln, firm to hard, rare calcite veins, some fossils, no fluor, no odor, NS

MS, crm to brn, f-xln, hard, dense, fossils in brn pcs Chert, white

SH, blk, gray, mustard yellow, varicolored

SH, varicolored, scatt SS clusters, f-gr, sorted, sub angular, magnetite specs, NS

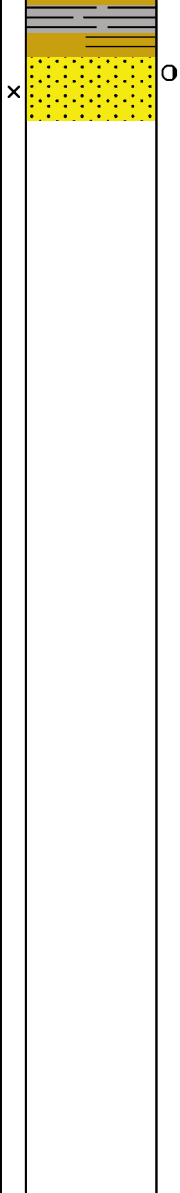
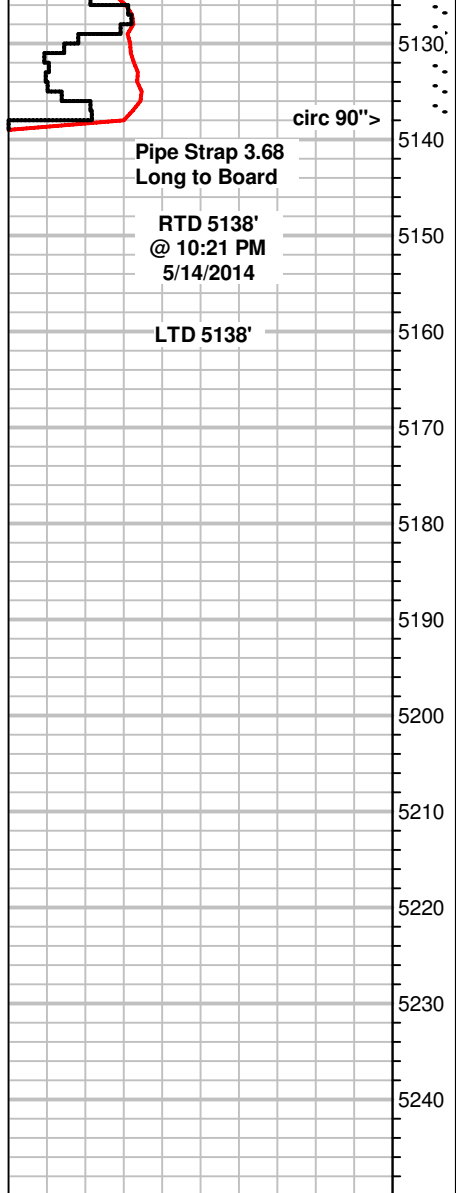
SH, varicolored A.A., rare (1pc) SS cluster

SH, varicolored, scatt chert, white, greenish white to gray, some tripolitic, rare spotty bright fluor, no odor, no cut

30' SMCW
315' WATER
IFP 21-92#
ISIP 1482#
FFP 100-182#
FSIP 1486#
Rw .12 @ 65°F
CL 75,000

+13 UGK, shale gas

DST #2 5082'-5138'
30-60-45-90
SB BOB/90 sec
4IN BB
SB BOB 90 sec GTS/25"
TSTM
NBB
REC:
2350' GIP
199' GMWCO (20g, 60o, 10w, 10m)
630' GSY OIL (20g, 80o)
1764' GWCO (10g, 80o, 10w)
126' WATER
IFP 222-684#
ISIP 1352#
FFP 705-1050#
FSIP 1319
#Rw .13 @ 63°F
CL 75,000
29.8 API Gravity



Flood Chert, white to clear, some oolitic w/ gray ooids, some yellowish white
SS clusters, co-gr, rounded, sorted, spotty fluor in pore spaces, strong odor in bag, slow milky cut

Gas Increase, 10-12 Units, continuous over the drilling break