



**TRILOBITE  
TESTING, INC**

# DRILL STEM TEST REPORT

Samuel Gary Jr. & Associates

**David Demel et al #1-15**

1515 Wynkoop, Ste. 700  
Denver Co. 80202

**15-17S-12W Barton KS**

ATTN: Dan Pritchard

Job Ticket: 54211

**DST#: 3**

Test Start: 2014.05.21 @ 01:50:32

## GENERAL INFORMATION:

Formation: **LKC A**

Deviated: No Whipstock: 0.00 ft (KB)

Time Tool Opened: 03:23:32

Time Test Ended: 09:46:47

Test Type: Conventional Straddle (Initial)

Tester: Gary Pevoteaux

Unit No: 56

**Interval: 3072.00 ft (KB) To 3084.00 ft (KB) (TVD)**

Total Depth: 3430.00 ft (KB) (TVD)

Hole Diameter: 7.88 inches Hole Condition: Fair

Reference Elevations: 1853.00 ft (KB)

1843.00 ft (CF)

KB to GR/CF: 10.00 ft

**Serial #: 8649 Outside**

Press@RunDepth: 29.69 psig @ 3073.00 ft (KB)

Start Date: 2014.05.21

End Date:

2014.05.21

Start Time: 01:50:33

End Time:

09:46:47

Capacity: 8000.00 psig

Last Calib.: 2014.05.21

Time On Btm: 2014.05.21 @ 03:21:47

Time Off Btm: 2014.05.21 @ 07:40:17

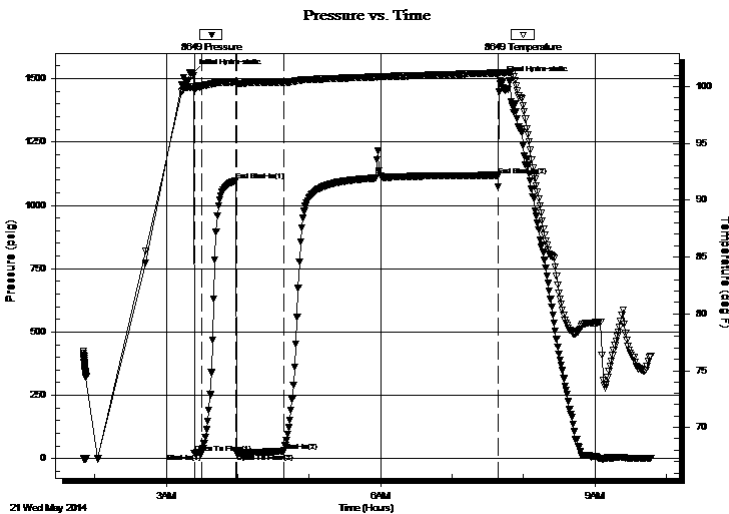
TEST COMMENT: IF:Wek blow . 1 - 4".

IS:No blow .

FF:Strong blow . B.O.B . in 80 secs.

FS:No blow .

## PRESSURE SUMMARY



Time (Min.)	Pressure (psig)	Temp (deg F)	Annotation
0	1519.08	99.97	Initial Hydro-static
2	21.73	99.67	Open To Flow (1)
8	20.34	100.08	Shut-In(1)
37	1096.91	100.44	End Shut-In(1)
38	19.30	100.28	Open To Flow (2)
77	29.69	100.38	Shut-In(2)
257	1118.71	101.21	End Shut-In(2)
259	1493.64	101.24	Final Hydro-static

## Recovery

Length (ft)	Description	Volume (bbl)
0.00	882 ft.of GIP	0.00
5.00	Clean oil	0.07
45.00	GOCM 18%g 40%o 42%m	0.63

## Gas Rates

	Choke (inches)	Pressure (psig)	Gas Rate (Mcf/d)



**TRILOBITE  
TESTING, INC**

# DRILL STEM TEST REPORT

Samuel Gary Jr. & Associates

**David Demel et al #1-15**

1515 Wynkoop, Ste. 700  
Denver Co. 80202

**15-17S-12W Barton KS**

ATTN: Dan Pritchard

Job Ticket: 54211

**DST#: 3**

Test Start: 2014.05.21 @ 01:50:32

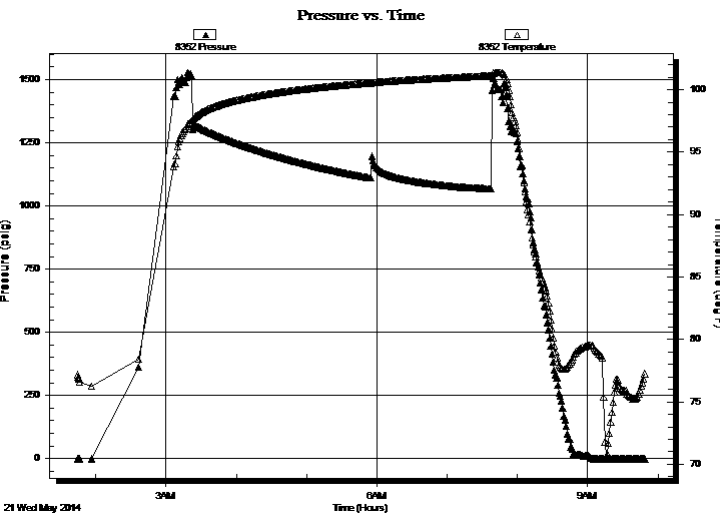
**GENERAL INFORMATION:**

Formation: **LKC A**  
 Deviated: No Whipstock: 0.00 ft (KB)  
 Time Tool Opened: 03:23:32  
 Time Test Ended: 09:46:47  
 Interval: **3072.00 ft (KB) To 3084.00 ft (KB) (TVD)**  
 Total Depth: 3430.00 ft (KB) (TVD)  
 Hole Diameter: 7.88 inches Hole Condition: Fair  
 Test Type: Conventional Straddle (Initial)  
 Tester: Gary Pevoteaux  
 Unit No: 56  
 Reference Elevations: 1853.00 ft (KB)  
 1843.00 ft (CF)  
 KB to GR/CF: 10.00 ft

**Serial #: 8352 Below (Straddle)**

Press@RunDepth: psig @ 3085.00 ft (KB) Capacity: 8000.00 psig  
 Start Date: 2014.05.21 End Date: 2014.05.21 Last Calib.: 2014.05.21  
 Start Time: 01:44:27 End Time: 09:48:36 Time On Btm:  
 Time Off Btm:

TEST COMMENT: IF:Wek blow . 1 - 4".  
 IS:No blow .  
 FF:Strong blow . B.O.B . in 80 secs.  
 FS:No blow .



**PRESSURE SUMMARY**

Time (Min.)	Pressure (psig)	Temp (deg F)	Annotation

**Recovery**

Length (ft)	Description	Volume (bbl)
0.00	882 ft.of GIP	0.00
5.00	Clean oil	0.07
45.00	GOCM 18%g 40%o 42%m	0.63

**Gas Rates**

Choke (inches)	Pressure (psig)	Gas Rate (Mcf/d)



**TRILOBITE  
TESTING, INC**

# DRILL STEM TEST REPORT

## FLUID SUMMARY

Samuel Gary Jr. & Associates

**David Demel et al #1-15**

1515 Wynkoop, Ste. 700  
Denver Co. 80202

**15-17S-12W Barton KS**

Job Ticket: 54211

**DST#: 3**

ATTN: Dan Pritchard

Test Start: 2014.05.21 @ 01:50:32

### Mud and Cushion Information

Mud Type: Gel Chem

Cushion Type:

Oil API:

37.4 deg API

Mud Weight: 9.00 lb/gal

Cushion Length:

ft

Water Salinity:

9800 ppm

Viscosity: 50.00 sec/qt

Cushion Volume:

bbbl

Water Loss: 10.18 in<sup>3</sup>

Gas Cushion Type:

Resistivity: 0.00 ohm.m

Gas Cushion Pressure:

psig

Salinity: 9800.00 ppm

Filter Cake: 0.20 inches

### Recovery Information

Recovery Table

Length ft	Description	Volume bbbl
0.00	882 ft.of GIP	0.000
5.00	Clean oil	0.070
45.00	GOCM 18%g 40%o 42%m	0.631

Total Length: 50.00 ft      Total Volume: 0.701 bbl

Num Fluid Samples: 0

Num Gas Bombs: 0

Serial #: none

Laboratory Name:

Laboratory Location:

Recovery Comments: Sampler Data: 3.3 cubic ft of Gas/1100 ML/ Oil 1100 ML/ Mud  
@ 129 PSIG

