



Geologist's Report

Company: L. D. Drilling, Inc

Lease: Bradley Trust #1-35

Field: NA

Surface Location: E2-SW-SW-NE (2310' FNL & 2169' FEL)

Sec: 35 Twp: 17S Rge: 11W

County: Barton State: Kansas

GL: 1815' KB: 1820'

Contractor: Petromark Drilling, LLC Rig #2

Spud: 7/28/14 Comp: 8/5/14

RTD: 3400' LTD: 3403'

Mud Up: +/- 2600' Mud Type: Chemical Displaced

Drilling Time Kept From: 2800' to RTD

Samples Saved From: 2875' to RTD

Samples Examined: 2875' to RTD

Geological Supervision: 2950' to RTD

Geologist on Well: Jim Musgrove And Kurt Talbott

Surface Casing: 8 5/8"@ 364'

Production Casing: 5 1/2" @

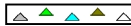








Wireline Logs: By Nabors: CNL/CDL, DIL, MEL

Image Header 02

	WELL BEING DRILLED		OFFSET		OFFSET	
	LD		F & M		HERSHBERGER	
	BRADLEY TRUST #1-35		#1 OBERLE SE/QTR		#1 BLOOMER	
	1820 KB		1815 KB		1826 KB	
FORMATION	Log	Log SS	Log	SS	Log	SS
ANHYDRITE	634	1186	622	1193		
BASE ANHY	655	1165				
HEEBNER	2889	-1069	2890	-1075	2893	-1067
TORONTO	2910	-1090	2910	-1096	2913	-1087
DOUGLAS	2921	-1101	2921	-1106		
BROWN LIME	3003	-1183	3001	-1186	3003	-1177
LANSING	3015	-1195	3015	-1200	3015	-1189

BASE KC	3271	-1451	3263	-1448	3250	-1424
CONGLOMERATE	3295	-1475	3303	-1488		
ARBUCKLE	3325	-1505	NA		3326	-1500
TOTAL DEPTH	3403	-1583	3340	-1525	3330	-1504

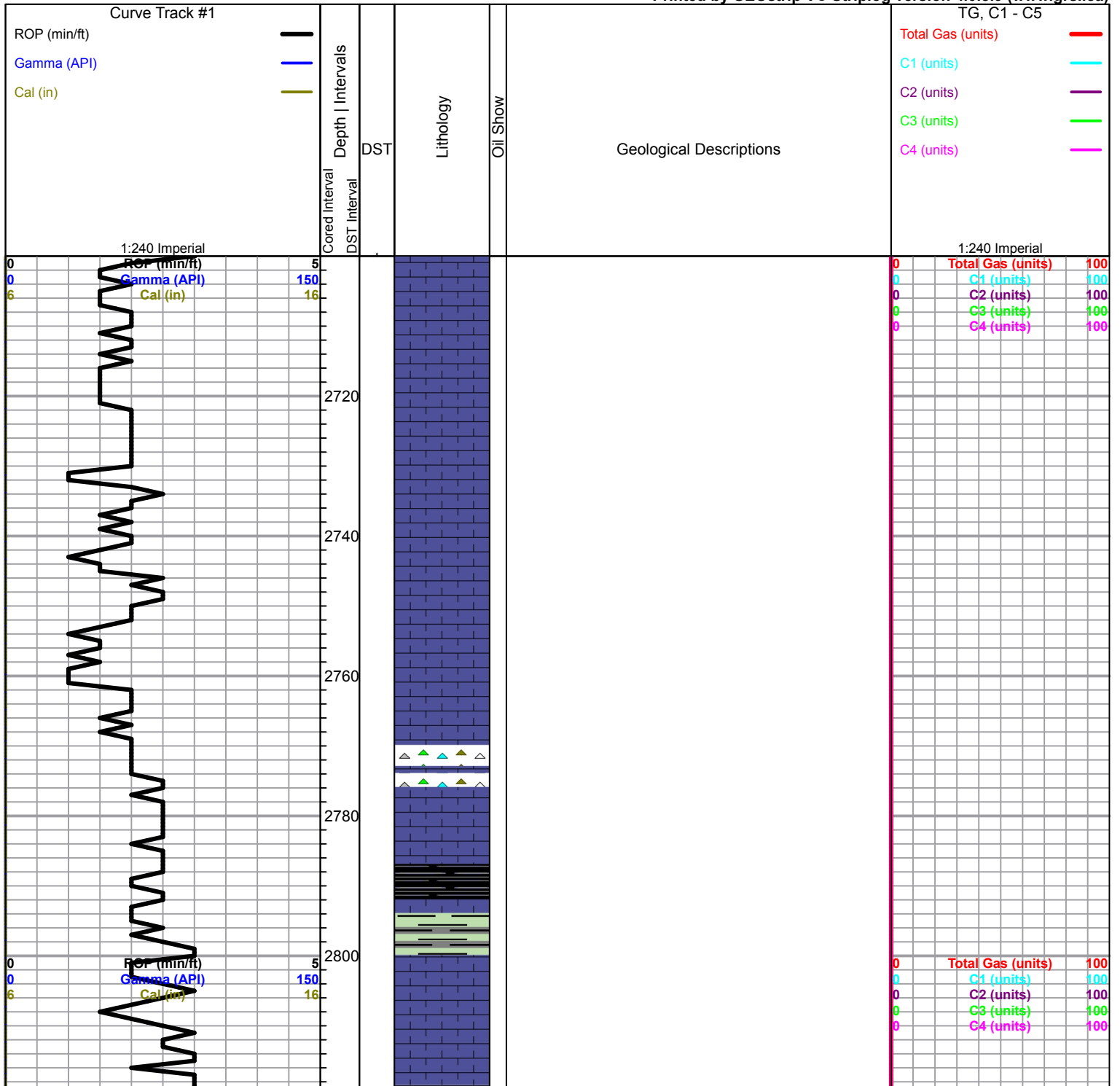
ROCK TYPES

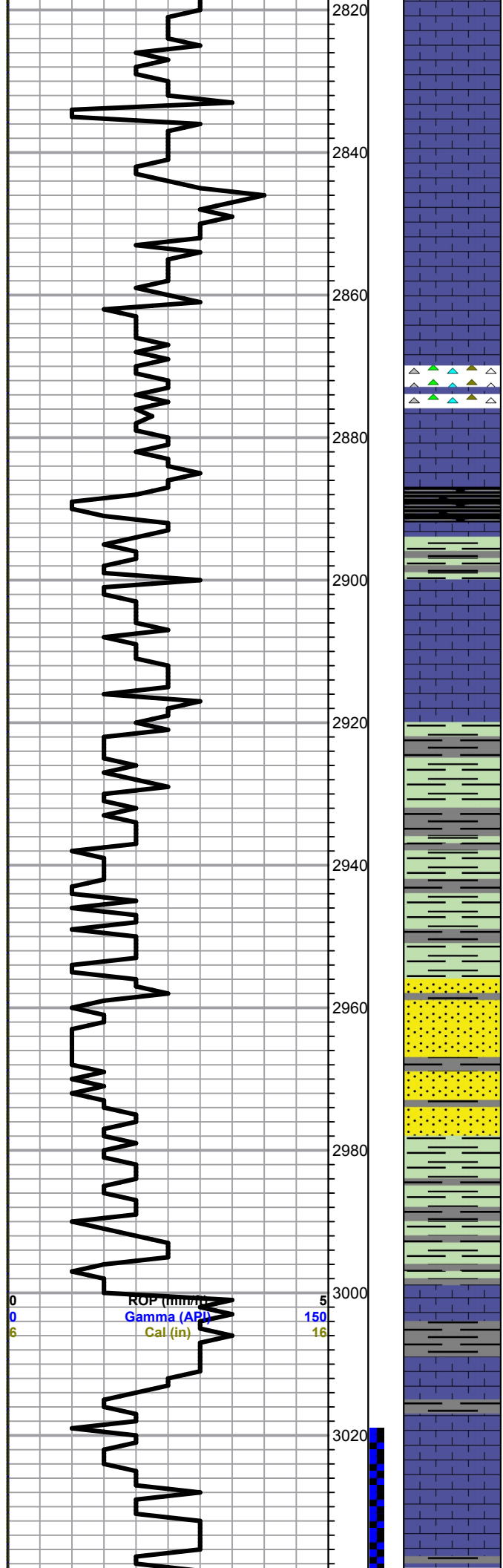
 Cht vari	 Chtcongl	 Lmst fw<7	 shale, gry	 Ss
 Congl	 Dolprim	 shale, grn	 Carbon Sh	

OTHER SYMBOLS

EVENTS	INTERVALS	DST
<ul style="list-style-type: none"> ⌋ Casing Shoe ▽ RTF ▶ Sidewall ▲ Left Casing Shoe ▼ Right Casing Shoe 	<ul style="list-style-type: none"> ■ Core · DST 	<ul style="list-style-type: none"> ■ DST Int ■ DST alt

Printed by GEOstrip VC Striplog version 4.0.8.9 (www.grsi.ca)





Trace black chert

Heebner 2888.0 (-1068.0) -1069.0

Black carbon shale

Toronto 2910.0 (-1090.0) -1090.0

Ls-tan, fxln, fossils, chalky, black to brown stain/saturationg, TrSFO, odor?

Douglas 2922.0 (-1102.0) -1101.0

Gry/grn shale, green shaley sand, NS

A/A

Sand-gry/grnish, very fine grained, mica in part, cal, brown stain, NSFO, no odor

Shale-gry/grn

Brown Lime 3001.0 (-1181.0) -1183.0

Ls-tan/gry, fxln, chalky, cherty, poor vis por, dense

Lansing 3014.0 (-1194.0) -1195.0

Ls-wht/crm, fxln, fossils, chalky, poor vis por, few scattered inter xln por, brown stains, TrSFO, faint odor

Ls-wht/gry, fxln, fossils, chalky, poor

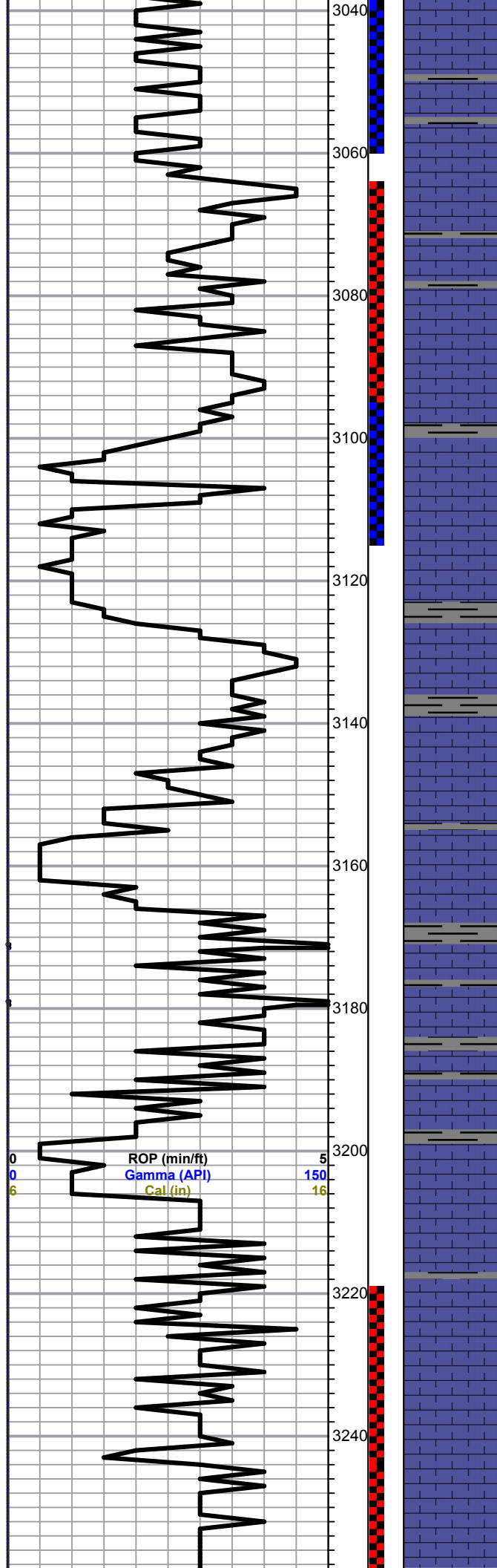
DST #1 3020-3060
 30-30-30-30
 IF: Blow died in 10 min

Recovery:
 5' mud

Pressures:
 ISIP 34 psi
 FSIP 34 psi
 IFP 5-10 psi
 FFP 10-12 psi
 HSH 1429-1420 psi

0	Total Gas (units)	100
0	C1 (units)	100
0	C2 (units)	100
0	C3 (units)	100
0	C4 (units)	100

DST #2 3065-3096
 30-45-45-60
 IF: BOB 1 min GTS 15 min
 TSTM
 ISI: BOB
 FF: BOB immediately Gas
 Gauged as Follows:
 @10 min 5.64 CF/D



light brown stains, poor SFO, no odor

Ls-wht/gry, fxln, few fossils, ool, poor light brown stains, TrSFO, chalky, no odor

Ls-crm/tan/wht, fxln, ool, poor vis por, cherty in part

Ls-tan/crm, ool, poor inner ool to vug por, golden to dark brown stains, SFO, faint odor

Ls-wht/tan/gry, fxln, ool, dnese, poor vis por

Ls-crm/tan/gry, ool, good oom por, Trace spotty stains, SFO when broken open, faint odor

Ls-crm/tan, ool, good oom por, trace stains NSFO, chalky

Ls-tan/crm, ool, oom, barren, chalky

Ls-crm/tan, fxln, sucrosic, dense, poor vis por, slightly ool, cherty

Black carbon shale

Ls-wht/cr, fxln, good oom por, barren, slightly chalky

Ls-crm/wht, fxln, dense, poor vis por, scattered por, cherty in part,

Ls-crm/tan, fxln, ool, good vuggy por, slightly chalky, no vis shows

Ls-tan/gry, fxln, dense, poor vis por, no vis shows, slug gry-silty shale

A/A

Ls-crm/tan, fxln, poor scattered por, scattered spotty stains, Trace SFO, no odor,

@15 min 6.39 CF/D
@20 min 7.06 CF/D
@25 min 8.89 CF/D
@30 min 9.45 CF/D
@35 min 10.5 CF/D
@40 min " "
@45 min " "

Recovery:
882' CGO (10%g 90%o)
126' MCGO
(10%g 60%o 30%m)

Pressures:
ISIP 672 psi
FSIP 654 psi
IFP 146-243 psi
FFP 279-420 psi
HSH 1454-1430 psi

DST #3 3097-3113
30-45-45-60
IF: Built to 6"
ISI: No Return
FE: Built to 7"

Recovery:
126' Gas In Pipe
5" OCMW
(20% o, 75% w, 5% m)
180' Muddy water

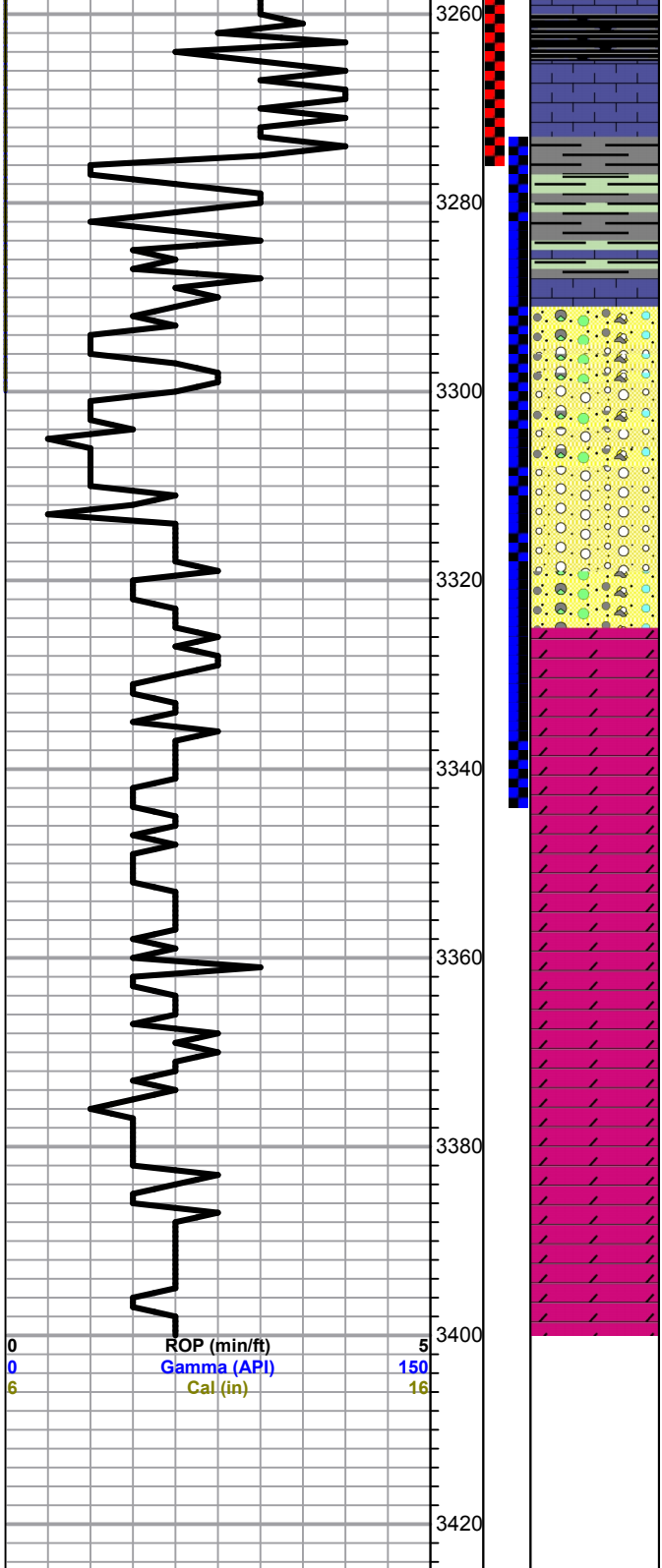
Pressures:
ISIP 635 psi
FSIP 571 psi
IFP 11-64 psi
FFP 68-90 psi
HSH 1464-1436 psi

0	Total Gas (units)	100
0	C1 (units)	100
0	C2 (units)	100
0	C3 (units)	100
0	C4 (units)	100

DST #4 3220-3274
30-30-30-30
IF: Blow Died in 5 min

Recovery:
5' mud

Pressures:
ISIP 15 psi
FSIP 13 psi
IFP 10-9 psi
FFP 8-12 psi
HSH 1541-1532 psi



Black carbon shale

Chert-wht/crm, ls-wht-por poor por
Base KC 3270.0 (-1450.0) -1451.0

Shale gry/grn

Conglomerate 3295.0 (-1475.0) - 1475.0

Chert Varying color, weathered

Chert A/A Shale-red/brwn firm, qtz granulars,

Chert-orange/yellow/tan, Shale varying

Arbuckle 3324.0 (-1504.0) -1505.0

Dol-wht/crm, fxlN, sucrosic, scattered iner xln por, cherty

A/A NS

Dol-wht/crm, f-med xln, scattered por, brown to blk stains SFO, no odor

Dol-wht/crm, med xln, fair iner xln por, barren

Trace wht Chalk

A/A few glauconitic, poor to fair iner ln por, NS

Dol-wht/crm, med xln, fair iner xln to vuggy por, NS

Total Depth 3400.0 (-1580.0) - 1583.0

DST #5 3270-3345
 30-30-30-30
 IF: Weak Surface Blow

Recovery:
 125' OSM

Pressures:
 ISIP 1031 psi
 FSIP 1006 psi
 HFP 11-48 psi
 FFP 51-73 psi
 HSH 1561-1550 psi

0	Total Gas (units)	100
0	C1 (units)	100
0	C2 (units)	100
0	C3 (units)	100
0	C4 (units)	100

ROP (min/ft) 5
 Gamma (API) 150
 Cal (in) 16