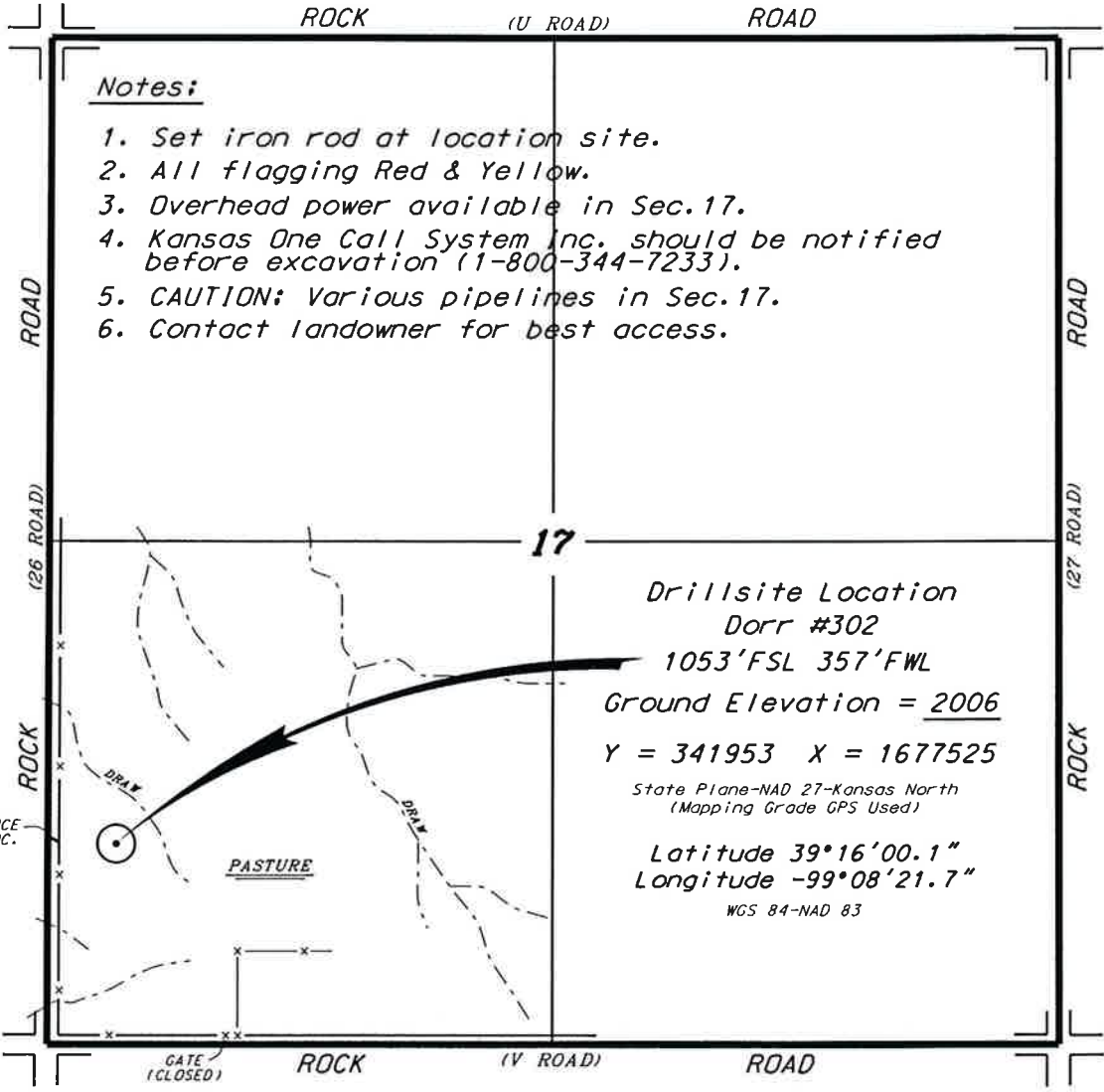


CARMEN SCHMITT, INC.
DORR LEASE
SW.1/4, SECTION 17, T9S, R16W
ROOKS COUNTY, KANSAS

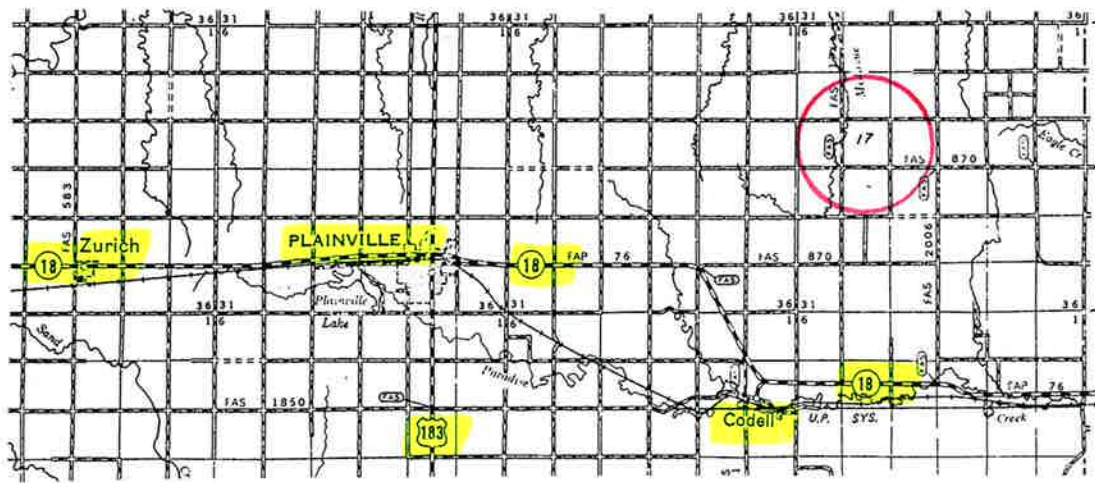
* Ingress and egress to location as shown on this plat is per usage only and may not be legally opened for public use. Contact landowner, tenant and county road department for access.



Notes:

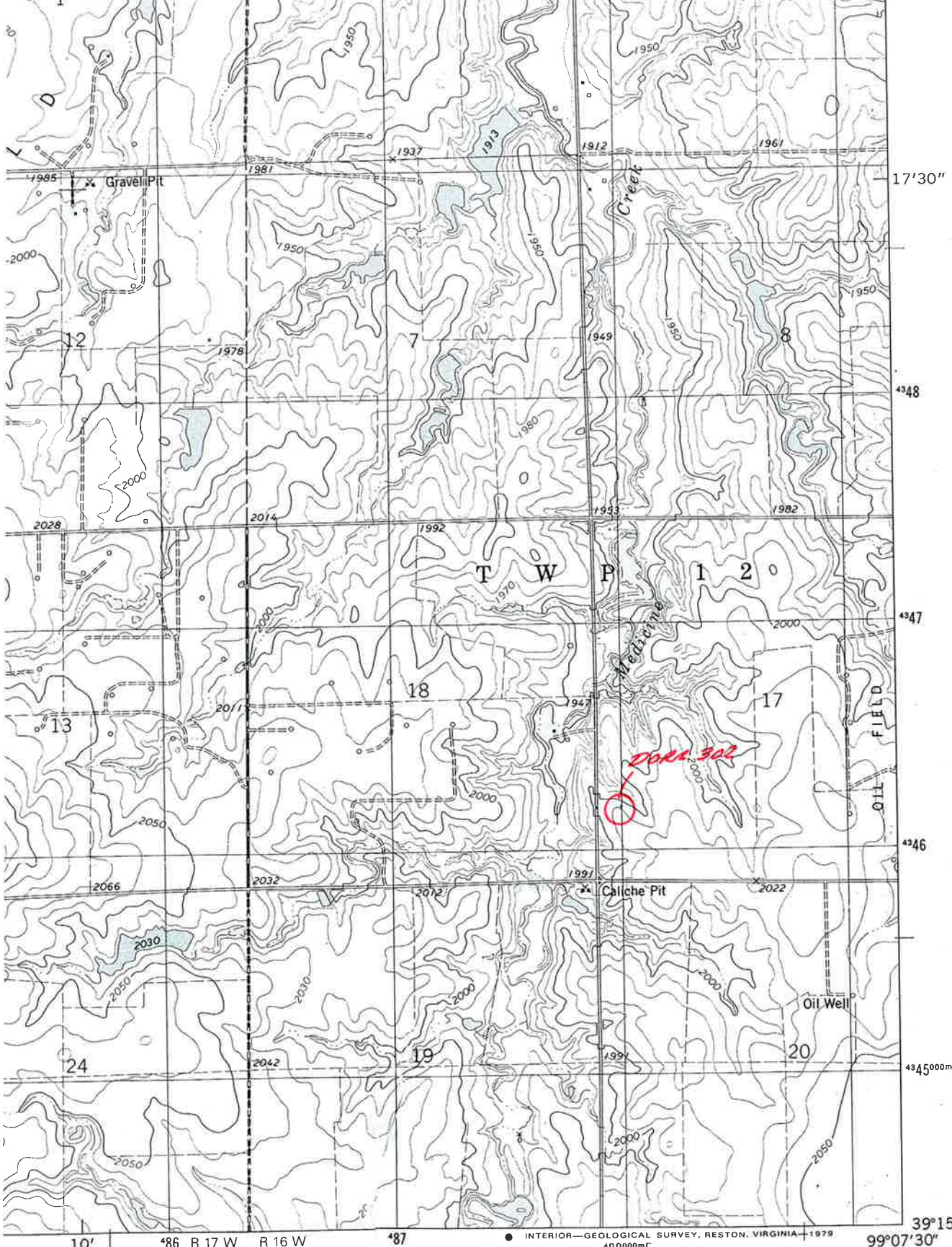
1. Set iron rod at location site.
2. All flagging Red & Yellow.
3. Overhead power available in Sec.17.
4. Kansas One Call System Inc. should be notified before excavation (1-800-344-7233).
5. CAUTION: Various pipelines in Sec.17.
6. Contact landowner for best access.

Drillsite Location
Dorr #302
1053' FSL 357' FWL
Ground Elevation = 2006
Y = 341953 X = 1677525
 State Plane-NAD 27-Kansas North
 (Mapping Grade GPS Used)
Latitude 39°16'00.1"
Longitude -99°08'21.7"
 WGS 84-NAD 83



* Controlling data is based upon the best maps and photographs available to us and upon a regular section of land containing 640 acres.
 * Approximate section lines were determined using the normal standard of care of oilfield surveyors practicing in the state of Kansas. The section corners, which establish the precise section lines, were not necessarily located, and the exact location of the drillsite location in the section is not guaranteed. Therefore, the operator securing this service and accepting this plat and all other parties relying thereon agree to hold Central Kansas Oilfield Services, Inc., its officers and employees harmless from all losses, costs and expenses and said entities released from any liability from incidental or consequential damages.
 * Elevations derived from National Geodetic Vertical Datum.

Date July 22, 2014



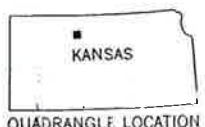
● INTERIOR—GEOLOGICAL SURVEY, RESTON, VIRGINIA—1979
488000mE

39°15'
99°07'30"

ROAD CLASSIFICATION

- Primary highway, hard surface
- Light-duty road, hard or improved surface
- Secondary highway, hard surface
- Unimproved road
- Interstate Route
- U. S. Route
- State Route

1 MILE



(NAD83)
6162 II NE

TWIN MOUND, KANS.