

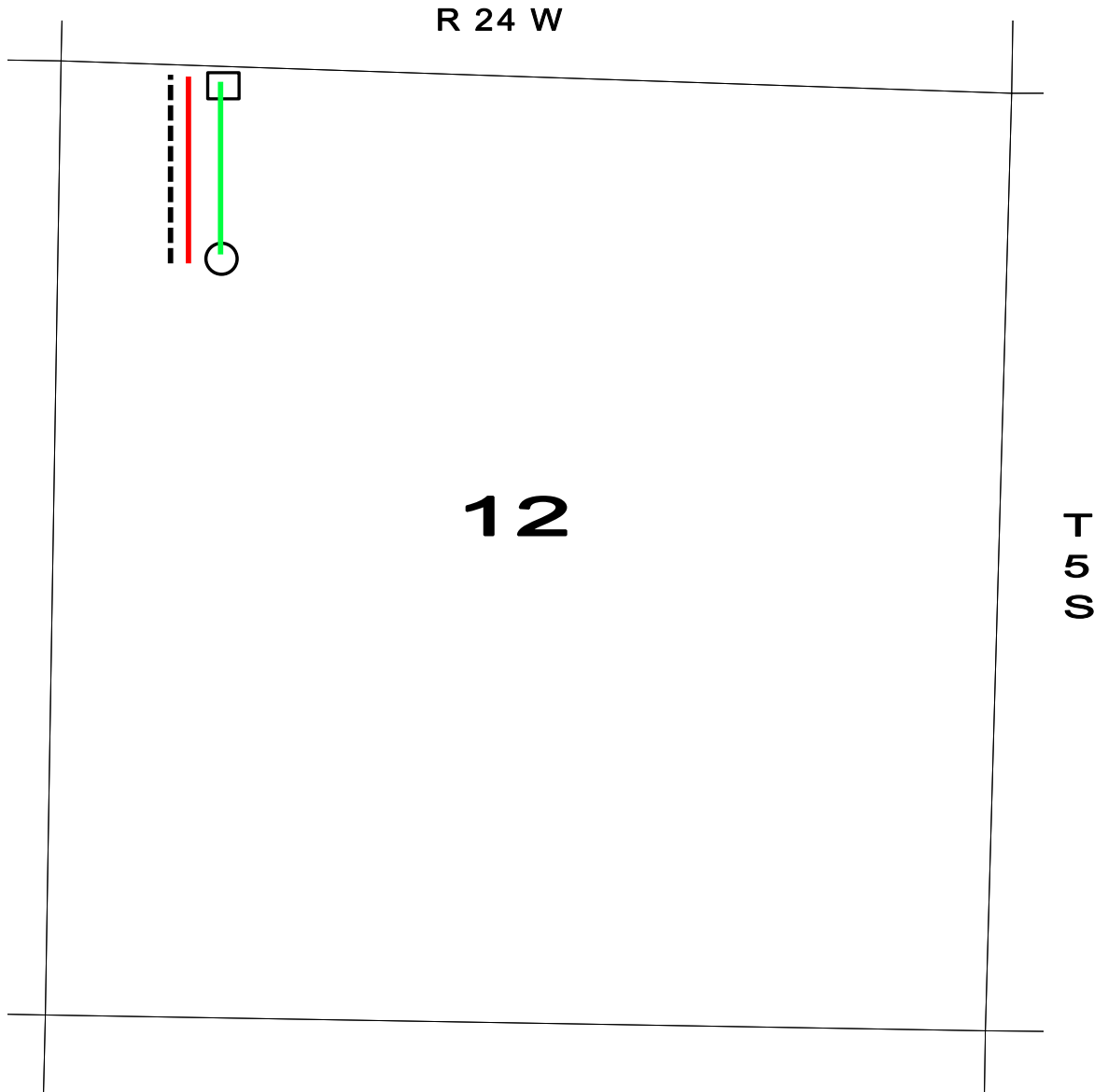
**OPERATOR:** Samuel Gary Jr. & Associates, Inc. 1515 Wynkoop Street, Suite 700  
Denver, Colorado 80202 office: 303-831-4673 ; fax: 303-863-7285

**WELL NAME:** F&R REALTY 1-12

**LOCATION:** 1100 FNL / 935 FWL Sec. 12-5S-24W NORTON COUNTY

**SURFACE OWNERS:**

Farm & Ranch Realty, Inc.	LaCretrica K. Hazlett Trust No. 1
Donald L. Hazlett, President	LaCretrica Hazlett & Donald Hazlett, Trustees
P.O. Box 947	P.O. Box 947
Colby, KS 67701	Colby, KS 67701



- PROPOSED WELL LOCATION
- ESTIMATED LOCATION OF TANK BATTERY

- ESTIMATED LEASE ROAD
- ESTIMATED LOCATION OF FLOWLINES
- ESTIMATED LOCATION OF ELECTRICAL LINES