



DRILL STEM TEST REPORT

Prepared For: **McCoy Petroleum.Corp.**

9342 E. Central
Wichita KS.67206

ATTN: Zach Wiele

Yohn A #1-26

26-30s-19w Kiowa KS

Start Date: 2014.06.24 @ 16:19:43

End Date: 2014.06.25 @ 03:38:13

Job Ticket #: 54223 DST #: 1

Trilobite Testing, Inc
PO Box 362 Hays, KS 67601
ph: 785-625-4778 fax: 785-625-5620

Printed: 2014.06.26 @ 13:35:47



**TRILOBITE
TESTING, INC**

DRILL STEM TEST REPORT

McCoy Petroleum Corp.

26-30s-19w Kiowa KS

9342 E. Central
Wichita KS.67206

Yohn A #1-26

Job Ticket: 54223

DST#: 1

ATTN: Zach Wiele

Test Start: 2014.06.24 @ 16:19:43

GENERAL INFORMATION:

Formation: **Miss.**

Deviated: No Whipstock: ft (KB)

Time Tool Opened: 19:24:58

Time Test Ended: 03:38:13

Test Type: Conventional Bottom Hole (Initial)

Tester: Gary Pevoteaux

Unit No: 56

Interval: 5055.00 ft (KB) To 5113.00 ft (KB) (TVD)

Reference Elevations: 2233.00 ft (KB)

Total Depth: 5113.00 ft (KB) (TVD)

2220.00 ft (CF)

Hole Diameter: 7.88 inches Hole Condition: Fair

KB to GR/CF: 13.00 ft

Serial #: 8352 Outside

Press@RunDepth: 406.20 psig @ 5056.00 ft (KB)

Capacity: 8000.00 psig

Start Date: 2014.06.24

End Date:

2014.06.25

Last Calib.:

2014.06.25

Start Time: 16:19:48

End Time:

03:38:13

Time On Btm:

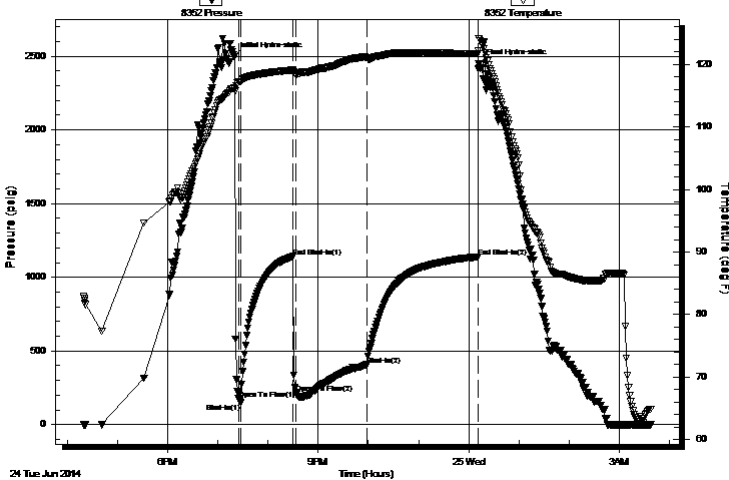
2014.06.24 @ 19:19:28

Time Off Btm:

2014.06.25 @ 00:11:43

TEST COMMENT: IF:Strong blow . GTS in 2 1/4 mins.
IS:Weak blow . 1 - 3"
FF:Strong blow . (see gas flow report)
FS:Strong blow . B.O.B.

Pressure vs. Time



PRESSURE SUMMARY

Time (Min.)	Pressure (psig)	Temp (deg F)	Annotation
0	2499.22	116.19	Initial Hydro-static
6	170.38	117.26	Open To Flow (1)
9	146.73	117.34	Shut-In(1)
71	1140.88	119.13	End Shut-In(1)
75	214.58	118.43	Open To Flow (2)
159	406.20	121.10	Shut-In(2)
291	1138.04	121.72	End Shut-In(2)
293	2448.04	124.18	Final Hydro-static

Recovery

Length (ft)	Description	Volume (bbl)
120.00	GMCO 50%g 15%m 35%o	0.59
260.00	GMCO 38%g 24%m 38%o	2.01
670.00	CGO 39%g 61%o	9.40

Gas Rates

	Choke (inches)	Pressure (psig)	Gas Rate (Mcf/d)
First Gas Rate	0.50	24.00	259.04
Last Gas Rate	0.25	23.00	59.33
Max. Gas Rate	0.25	25.00	62.50



**TRILOBITE
TESTING, INC**

DRILL STEM TEST REPORT

McCoy Petroleum Corp.

26-30s-19w Kiowa KS

9342 E. Central
Wichita KS.67206

Yohn A #1-26

Job Ticket: 54223

DST#: 1

ATTN: Zach Wiele

Test Start: 2014.06.24 @ 16:19:43

GENERAL INFORMATION:

Formation: **Miss.**

Deviated: No Whipstock: ft (KB)

Time Tool Opened: 19:24:58

Time Test Ended: 03:38:13

Test Type: Conventional Bottom Hole (Initial)

Tester: Gary Pevoteaux

Unit No: 56

Interval: 5055.00 ft (KB) To 5113.00 ft (KB) (TVD)

Total Depth: 5113.00 ft (KB) (TVD)

Hole Diameter: 7.88 inches Hole Condition: Fair

Reference Elevations: 2233.00 ft (KB)

2220.00 ft (CF)

KB to GR/CF: 13.00 ft

Serial #: 8370 Inside

Press@RunDepth: psig @ 5056.00 ft (KB)

Start Date: 2014.06.24

End Date:

2014.06.25

Start Time: 16:15:25

End Time:

03:35:20

Capacity: 8000.00 psig

Last Calib.:

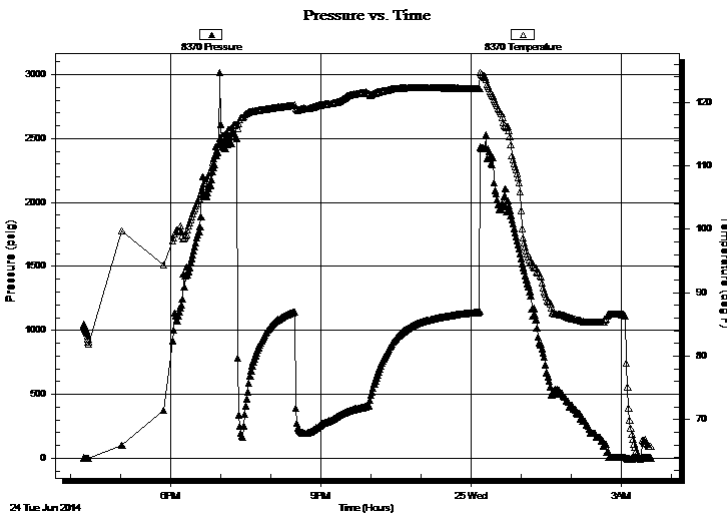
2014.06.25

Time On Btm:

Time Off Btm:

TEST COMMENT: IF:Strong blow . GTS in 2 1/4 mins.
IS:Weak blow . 1 - 3"
FF:Strong blow . (see gas flow report)
FS:Strong blow . B.O.B.

PRESSURE SUMMARY



Time (Min.)	Pressure (psig)	Temp (deg F)	Annotation

Recovery

Length (ft)	Description	Volume (bbl)
120.00	GMCO 50%g 15%m 35%o	0.59
260.00	GMCO 38%g 24%m 38%o	2.01
670.00	CGO 39%g 61%o	9.40

Gas Rates

	Choke (inches)	Pressure (psig)	Gas Rate (Mcf/d)
First Gas Rate	0.50	24.00	259.04
Last Gas Rate	0.25	23.00	59.33
Max. Gas Rate	0.25	25.00	62.50



**TRILOBITE
TESTING, INC**

DRILL STEM TEST REPORT

TOOL DIAGRAM

McCoy Petroleum Corp.

26-30s-19w Kiowa KS

9342 E. Central
Wichita KS.67206

Yohn A #1-26

Job Ticket: 54223

DST#: 1

ATTN: Zach Wiele

Test Start: 2014.06.24 @ 16:19:43

Tool Information

Drill Pipe:	Length: 4739.00 ft	Diameter: 3.80 inches	Volume: 66.48 bbl	Tool Weight: 2400.00 lb
Heavy Wt. Pipe:	Length: 0.00 ft	Diameter: 0.00 inches	Volume: 0.00 bbl	Weight set on Packer: 24000.00 lb
Drill Collar:	Length: 300.00 ft	Diameter: 2.25 inches	Volume: 1.48 bbl	Weight to Pull Loose: 109000.0 lb
			<u>Total Volume: 67.96 bbl</u>	Tool Chased 0.00 ft
Drill Pipe Above KB:	12.00 ft			String Weight: Initial 89000.00 lb
Depth to Top Packer:	5055.00 ft			Final 92000.00 lb
Depth to Bottom Packer:	ft			
Interval between Packers:	58.00 ft			
Tool Length:	86.00 ft			
Number of Packers:	2	Diameter: 6.75 inches		

Tool Comments:

Tool Description

Tool Description	Length (ft)	Serial No.	Position	Depth (ft)	Accum. Lengths
Change Over Sub	1.00			5028.00	
Shut In Tool	5.00			5033.00	
Hydraulic tool	5.00			5038.00	
Jars	5.00			5043.00	
Safety Joint	3.00			5046.00	
Packer	4.00			5050.00	28.00 Bottom Of Top Packer
Packer	5.00			5055.00	
Stubb	1.00			5056.00	
Recorder	0.00	8352	Outside	5056.00	
Recorder	0.00	8370	Inside	5056.00	
Perforations	11.00			5067.00	
Blank Spacing	32.00			5099.00	
Perforations	9.00			5108.00	
Bullnose	5.00			5113.00	58.00 Bottom Packers & Anchor

Total Tool Length: 86.00



**TRILOBITE
TESTING, INC**

DRILL STEM TEST REPORT

FLUID SUMMARY

McCoy Petroleum Corp.

26-30s-19w Kiowa KS

9342 E. Central
Wichita KS.67206

Yohn A #1-26

Job Ticket: 54223

DST#: 1

ATTN: Zach Wiele

Test Start: 2014.06.24 @ 16:19:43

Mud and Cushion Information

Mud Type: Gel Chem

Cushion Type:

Oil API:

37.2 deg API

Mud Weight: 10.00 lb/gal

Cushion Length:

ft

Water Salinity:

7800 ppm

Viscosity: 54.00 sec/qt

Cushion Volume:

bbbl

Water Loss: 12.79 in³

Gas Cushion Type:

Resistivity: 0.00 ohm.m

Gas Cushion Pressure:

psig

Salinity: 7800.00 ppm

Filter Cake: 0.20 inches

Recovery Information

Recovery Table

Length ft	Description	Volume bbl
120.00	GMCO 50%g 15%m 35%o	0.590
260.00	GMCO 38%g 24%m 38%o	2.007
670.00	CGO 39%g 61%o	9.398

Total Length: 1050.00 ft

Total Volume: 11.995 bbl

Num Fluid Samples: 0

Num Gas Bombs: 1

Serial #: gp-1

Laboratory Name: Caraway

Laboratory Location: Liberal, KS

Recovery Comments:



**TRILOBITE
TESTING, INC.**

DRILL STEM TEST REPORT

GAS RATES

McCoy Petroleum Corp.

26-30s-19w Kiowa KS

9342 E. Central
Wichita KS.67206

Yohn A #1-26

Job Ticket: 54223

DST#: 1

ATTN: Zach Wiele

Test Start: 2014.06.24 @ 16:19:43

Gas Rates Information

Temperature: 59 (deg F)
Relative Density: 0.65
Z Factor: 0.8

Gas Rates Table

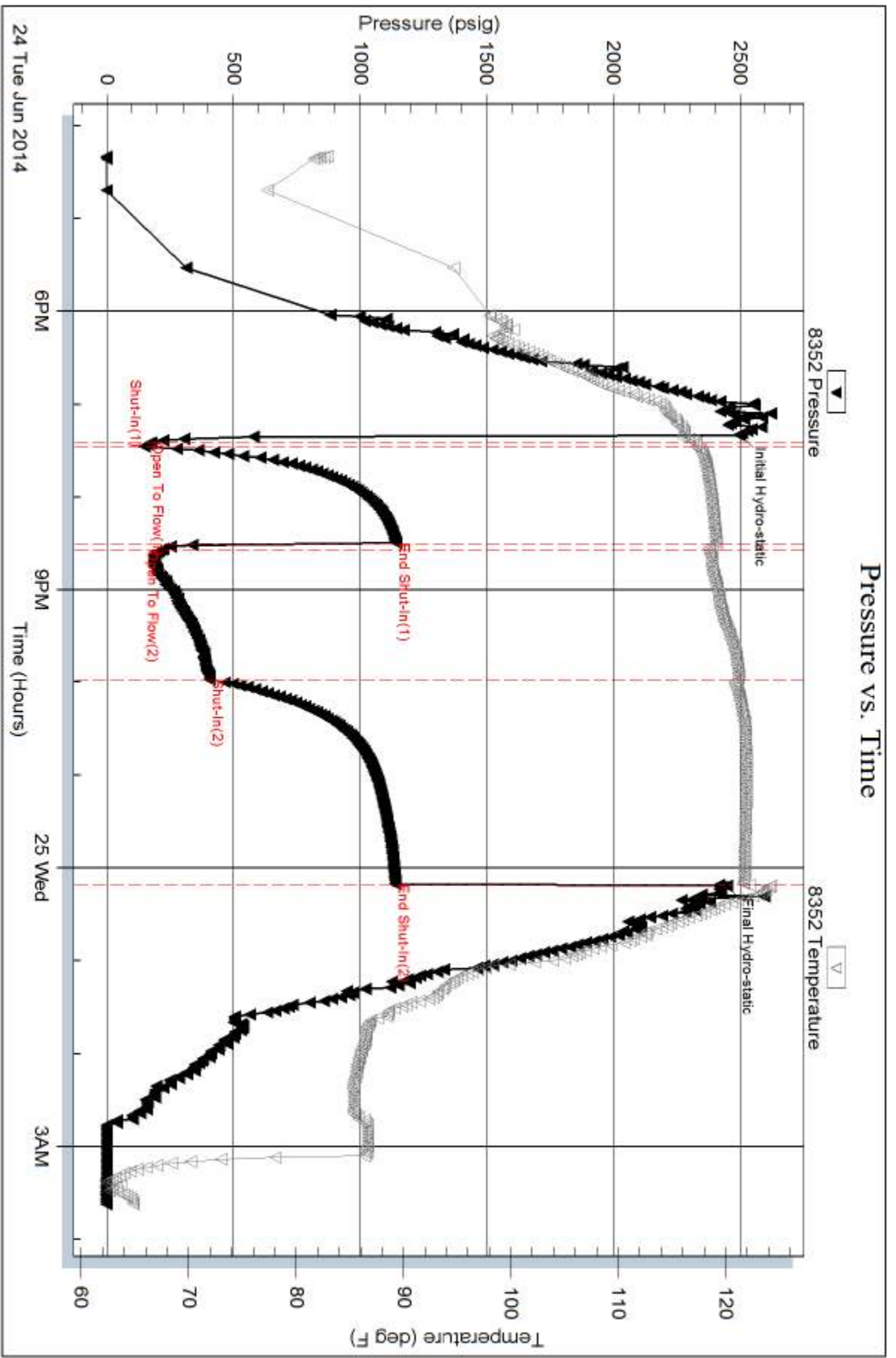
Flow Period	Elapsed Time	Choke (inches)	Pressure (psig)	Gas Rate (Mcf/d)
2	10	0.50	24.00	259.04
2	20	0.50	17.00	211.82
2	30	0.25	12.00	41.88
2	40	0.25	19.00	52.99
2	50	0.25	22.00	57.74
2	60	0.25	25.00	62.50
2	70	0.25	25.00	62.50
2	80	0.25	25.00	62.50
2	90	0.25	23.00	59.33

Serial #: 8352

Outside McCoy Petroleum Corp.

Yohn A #1-26

DST Test Number: 1



Triobite Testing, Inc

Ref. No: 54223

Printed: 2014.06.26 @ 13:35:49

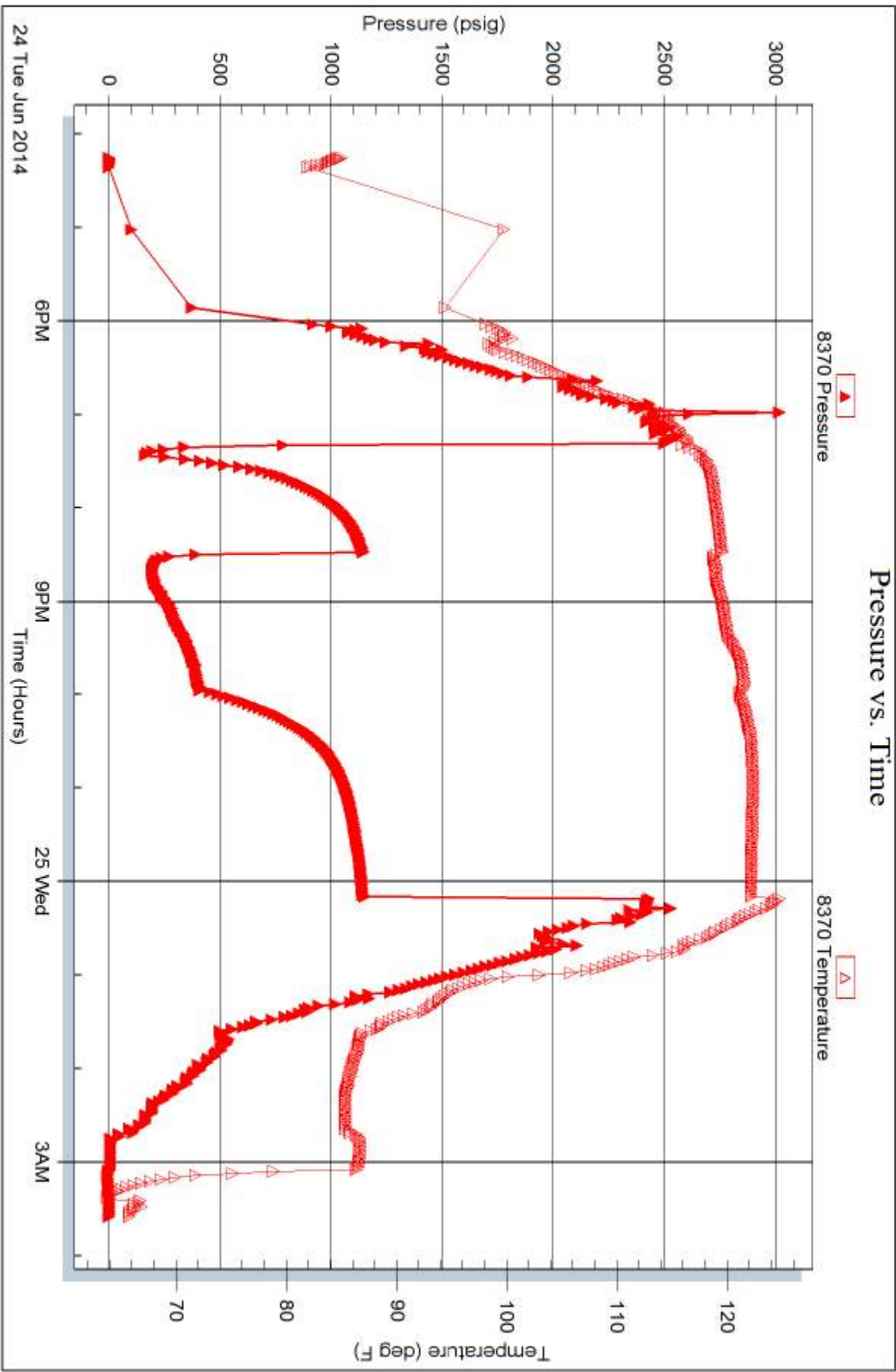
Serial #: 8370

Inside

McCoy Petroleum Corp.

Yohn A #1-26

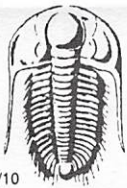
DST Test Number: 1



Trilobite Testing, Inc

Ref. No: 54223

Printed: 2014.06.26 @ 13:35:49



TRILOBITE TESTING INC.

1515 Commerce Parkway • Hays, Kansas 67601

Test Ticket

NO. 54223

4/10

Well Name & No. YOUNG A # 1-26 Test No. 1 Date 6-24-14
 Company MCCOY PETL. CORP. Elevation 2233 KB 2220 GL
 Address 9342 E. CENTRAL, WICHITA KS. 67206
 Co. Rep / Geo. ZACH WIELE Rig STERLING DRUG. #5
 Location: Sec. 26 Twp. 30S Rge. 19W Co. KANAWA State KS.

Interval Tested 5055 - 5113 Zone Tested MISS.
 Anchor Length 58 Drill Pipe Run 4739' Mud Wt. 9.5
 Top Packer Depth 5050' Drill Collars Run 300' Vis 54
 Bottom Packer Depth 5055' Wt. Pipe Run 0 WL 12.8cc
 Total Depth 5113 Chlorides 7,800 ppm System LCM 2#

Blow Description IF: Strong blow. B.O.B. GTS in 2 1/4 mins.
ISI: Weak blow. 0 1-3".
FF: Strong blow. (see gas flow report) FSI: Strong blow.
B.O.B.

Rec	Feet of	%gas	%oil	%water	%mud
<u>670</u>	<u>CGO</u>	<u>39</u>	<u>61</u>		
<u>260</u>	<u>GMCO</u>	<u>38</u>	<u>38</u>	<u>24</u>	
<u>120</u>	<u>GMCO</u>	<u>30</u>	<u>35</u>	<u>15</u>	
Rec	Feet of	%gas	%oil	%water	%mud
Rec	Feet of	%gas	%oil	%water	%mud

Rec Total 1050 Fluid BHT 1220 Gravity 37.2 API RW N.C. @ ~ °F Chlorides 7800 ppm

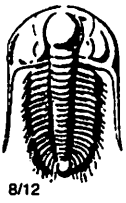
(A) Initial Hydrostatic <u>2499</u>	<input checked="" type="checkbox"/> Test <u>1350</u>	T-On Location <u>1435</u>
(B) First Initial Flow <u>170</u>	<input checked="" type="checkbox"/> Jars <u>250</u>	T-Started <u>1619</u>
(C) First Final Flow <u>147</u>	<input checked="" type="checkbox"/> Safety Joint <u>75</u>	T-Open <u>1924</u>
(D) Initial Shut-In <u>1141</u>	<input type="checkbox"/> Circ Sub	T-Pulled <u>2358</u>
(E) Second Initial Flow <u>215</u>	<input checked="" type="checkbox"/> Hourly Standby <u>1.5</u> <u>150</u>	T-Out <u>0338</u>
(F) Second Final Flow <u>406</u>	<input checked="" type="checkbox"/> Mileage <u>107</u> <u>165.85</u>	Comments
(G) Final Shut-In <u>1138</u>	<input type="checkbox"/> Sampler	
(H) Final Hydrostatic <u>2448</u>	<input type="checkbox"/> Straddle	<input type="checkbox"/> Ruined Shale Packer
	<input type="checkbox"/> Shale Packer	<input type="checkbox"/> Ruined Packer
	<input type="checkbox"/> Extra Packer	<input type="checkbox"/> Extra Copies
	<input type="checkbox"/> Extra Recorder	Sub Total <u>0</u>
	<input type="checkbox"/> Day Standby	Total <u>1990.85</u>
	<input type="checkbox"/> Accessibility	MP/DST Disc't

Initial Open 5
 Initial Shut-In 60
 Final Flow 90
 Final Shut-In 120

Sub Total 1990.85

Approved By _____ Our Representative Gary [Signature]

Trilobite Testing Inc. shall not be liable for damaged of any kind of the property or personnel of the one for whom a test is made, or for any loss suffered or sustained, directly or indirectly, through the use of its equipment, or its statements or opinion concerning the results of any test, tools lost or damaged in the hole shall be paid for at cost by the party for whom the test is made.



TRILOBITE TESTING INC.

1515 Commerce Parkway • Hays, Kansas 67601

Gas Volume Report

8/12
 McCoy Path. Corp.
 Operator
 INITIAL OPEN

John A #1-26
 Well Name and No.
 FINAL OPEN

1
 DST No.

Min.	Ins. of Water PSIG	Orifice Size	MCF/D	Min.	Ins. of Water PSIG	Orifice Size	MCF/D
2.25	---	3/4"	GTS	10	24 PSI	1/2"	259
				20	17 PSI	1/2"	212
				30	12 PSI	1/4"	42
				40	19 PSI	1/4"	53
				50	22 PSI	1/4"	58
				60	25 PSI	1/4"	62
				70	25 PSI	1/4"	62
				80	25 PSI	1/4"	62
				90	23 PSI	1/4"	59

Remarks: