



DRILL STEM TEST REPORT

Prepared For: **McCoy Petroleum Corporation**

9342 E Central
Wichita KS 67206

ATTN: Dave Williams

Massier B #1-31

31-11s-19w Ellis,KS

Start Date: 2014.06.25 @ 06:42:11

End Date: 2014.06.25 @ 15:21:11

Job Ticket #: 58905 DST #: 1

Trilobite Testing, Inc
PO Box 362 Hays, KS 67601
ph: 785-625-4778 fax: 785-625-5620

Printed: 2014.07.01 @ 11:53:11



TRILOBITE TESTING, INC

DRILL STEM TEST REPORT

McCoy Petroleum Corporation

31-11s-19w Ellis,KS

9342 E Central
Wichita KS 67206

Massier B #1-31

Job Ticket: 58905

DST#: 1

ATTN: Dave Williams

Test Start: 2014.06.25 @ 06:42:11

GENERAL INFORMATION:

Formation: **LKC E - G**

Deviated: No Whipstock: ft (KB)

Time Tool Opened: 09:08:21

Time Test Ended: 15:21:11

Test Type: Conventional Bottom Hole (Initial)

Tester: Tate Lang

Unit No: 49

Interval: 3457.00 ft (KB) To 3492.00 ft (KB) (TVD)

Reference Elevations: 2101.00 ft (KB)

Total Depth: 3492.00 ft (KB) (TVD)

2096.00 ft (CF)

Hole Diameter: 7.88 inches Hole Condition: Good

KB to GR/CF: 5.00 ft

Serial #: 8897

Inside

Press@RunDepth: 63.74 psig @ 3461.00 ft (KB)

Capacity: 8000.00 psig

Start Date: 2014.06.25

End Date:

2014.06.25

Last Calib.:

2014.06.25

Start Time: 06:42:12

End Time:

15:21:11

Time On Btm:

2014.06.25 @ 09:08:11

Time Off Btm:

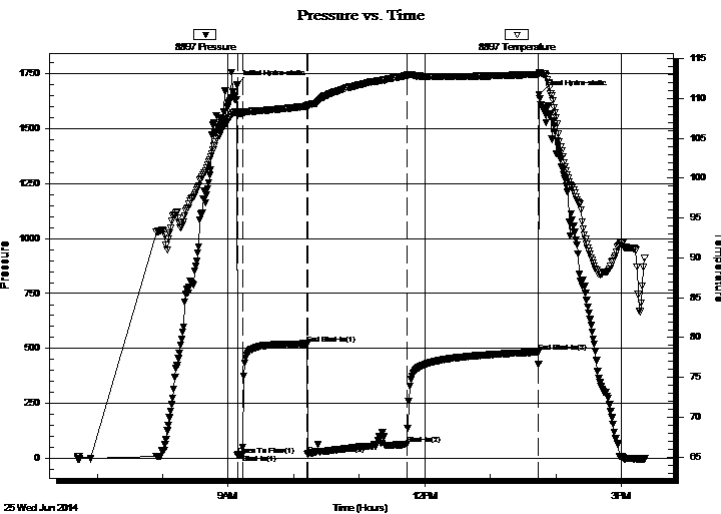
2014.06.25 @ 13:44:50

TEST COMMENT: Weak surface blow built to 1/2"

Dead no blow back

Weak surface blow built to 3 1/2"

Dead no blow back



PRESSURE SUMMARY

Time (Min.)	Pressure (psig)	Temp (deg F)	Annotation
0	1698.56	108.40	Initial Hydro-static
1	13.41	107.84	Open To Flow (1)
5	20.11	108.22	Shut-In(1)
64	522.05	109.05	End Shut-In(1)
65	18.77	108.90	Open To Flow (2)
156	63.74	112.92	Shut-In(2)
276	481.72	113.04	End Shut-In(2)
277	1654.72	113.30	Final Hydro-static

Recovery

Length (ft)	Description	Volume (bbl)
100.00	MCW 20%M 80%W	0.60

Gas Rates

	Choke (inches)	Pressure (psig)	Gas Rate (Mcf/d)



**TRILOBITE
TESTING, INC**

DRILL STEM TEST REPORT

TOOL DIAGRAM

McCoy Petroleum Corporation

31-11s-19w Ellis,KS

9342 E Central
Wichita KS 67206

Massier B #1-31

Job Ticket: 58905

DST#: 1

ATTN: Dave Williams

Test Start: 2014.06.25 @ 06:42:11

Tool Information

Drill Pipe:	Length: 3362.00 ft	Diameter: 3.80 inches	Volume: 47.16 bbl	Tool Weight: 2200.00 lb
Heavy Wt. Pipe:	Length: 0.00 ft	Diameter: 0.00 inches	Volume: 0.00 bbl	Weight set on Packer: 20000.00 lb
Drill Collar:	Length: 88.00 ft	Diameter: 2.25 inches	Volume: 0.43 bbl	Weight to Pull Loose: 56000.00 lb
			<u>Total Volume: 47.59 bbl</u>	Tool Chased 0.00 ft
Drill Pipe Above KB:	20.00 ft			String Weight: Initial 45000.00 lb
Depth to Top Packer:	3457.00 ft			Final 45000.00 lb
Depth to Bottom Packer:	ft			
Interval between Packers:	35.00 ft			
Tool Length:	62.00 ft			
Number of Packers:	2	Diameter: 6.75 inches		

Tool Comments:

Tool Description

Tool Description	Length (ft)	Serial No.	Position	Depth (ft)	Accum. Lengths
Shut In Tool	5.00			3435.00	
Hydraulic tool	5.00			3440.00	
Jars	5.00			3445.00	
Safety Joint	2.00			3447.00	
Packer	5.00			3452.00	27.00 Bottom Of Top Packer
Packer	5.00			3457.00	
Stubb	1.00			3458.00	
Perforations	3.00			3461.00	
Recorder	0.00	8897	Inside	3461.00	
Recorder	0.00	8898	Outside	3461.00	
Perforations	28.00			3489.00	
Bullnose	3.00			3492.00	35.00 Bottom Packers & Anchor

Total Tool Length: 62.00



**TRILOBITE
TESTING, INC**

DRILL STEM TEST REPORT

FLUID SUMMARY

McCoy Petroleum Corporation

31-11s-19w Ellis,KS

9342 E Central
Wichita KS 67206

Massier B #1-31

Job Ticket: 58905

DST#: 1

ATTN: Dave Williams

Test Start: 2014.06.25 @ 06:42:11

Mud and Cushion Information

Mud Type: Gel Chem

Cushion Type:

Oil API:

deg API

Mud Weight: 9.00 lb/gal

Cushion Length:

ft

Water Salinity:

ppm

Viscosity: 57.00 sec/qt

Cushion Volume:

bbbl

Water Loss: 8.78 in³

Gas Cushion Type:

Resistivity: ohm.m

Gas Cushion Pressure:

psig

Salinity: 2800.00 ppm

Filter Cake: 1.00 inches

Recovery Information

Recovery Table

Length ft	Description	Volume bbl
100.00	MCW 20%M 80%W	0.601

Total Length: 100.00 ft Total Volume: 0.601 bbl

Num Fluid Samples: 0

Num Gas Bombs: 0

Serial #:

Laboratory Name:

Laboratory Location:

Recovery Comments:

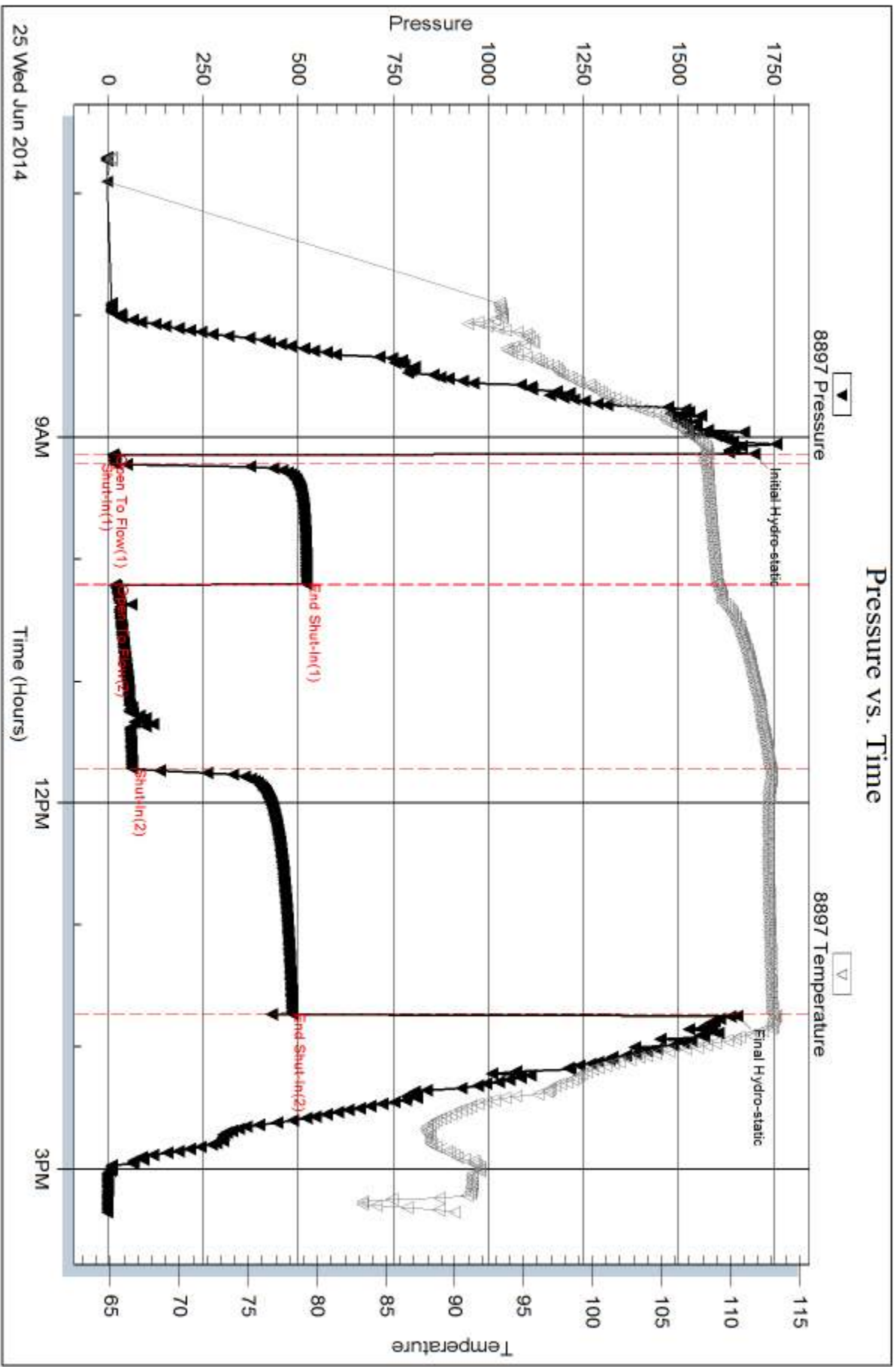
Serial #: 8897

Inside

McCoy Petroleum Corporation

Massier B #1-31

DST Test Number: 1





DRILL STEM TEST REPORT

Prepared For: **McCoy Petroleum Corporation**

9342 E Central
Wichita KS 67206

ATTN: Dave Williams

Massier B #1-31

31-11s-19w Ellis,KS

Start Date: 2014.06.26 @ 02:03:07

End Date: 2014.06.26 @ 08:58:16

Job Ticket #: 58906 DST #: 2

Trilobite Testing, Inc
PO Box 362 Hays, KS 67601
ph: 785-625-4778 fax: 785-625-5620

Printed: 2014.07.01 @ 11:52:36

McCoy Petroleum Corporation

31-11s-19w Ellis,KS

Massier B #1-31

DST # 2

LKC I - J

2014.06.26



TRILOBITE TESTING, INC

DRILL STEM TEST REPORT

McCoy Petroleum Corporation

31-11s-19w Ellis,KS

9342 E Central
Wichita KS 67206

Massier B #1-31

Job Ticket: 58906

DST#: 2

ATTN: Dave Williams

Test Start: 2014.06.26 @ 02:03:07

GENERAL INFORMATION:

Formation: **LKC I - J**

Deviated: No Whipstock: ft (KB)

Time Tool Opened: 03:29:07

Time Test Ended: 08:58:16

Test Type: Conventional Bottom Hole (Reset)

Tester: Tate Lang

Unit No: 49

Interval: 3541.00 ft (KB) To 3588.00 ft (KB) (TVD)

Reference Elevations: 2101.00 ft (KB)

Total Depth: 3492.00 ft (KB) (TVD)

2096.00 ft (CF)

Hole Diameter: 7.88 inches Hole Condition: Good

KB to GR/CF: 5.00 ft

Serial #: 8898 Outside

Press@RunDepth: 16.73 psig @ 3542.00 ft (KB)

Capacity: 8000.00 psig

Start Date: 2014.06.26

End Date:

2014.06.26

Last Calib.:

2014.06.26

Start Time: 02:03:08

End Time:

08:58:17

Time On Btm:

2014.06.26 @ 03:28:57

Time Off Btm:

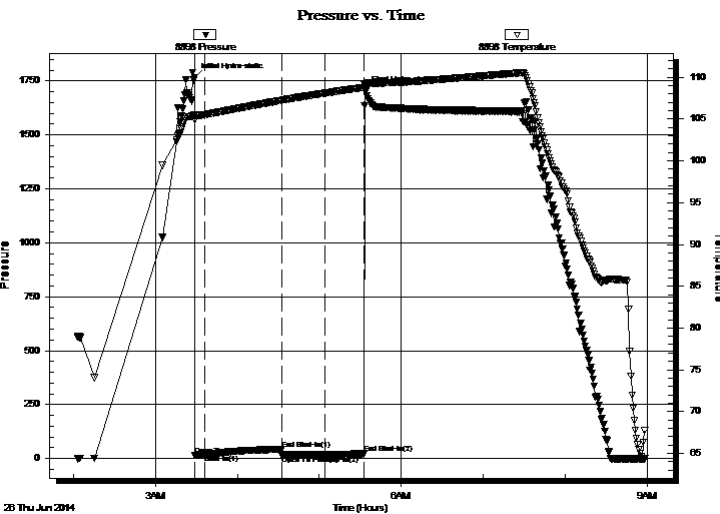
2014.06.26 @ 05:33:47

TEST COMMENT: Weak surface blow built to 1/4"

Dead no blow back

Dead no blow

Dead no blow back



PRESSURE SUMMARY

Time (Min.)	Pressure (psig)	Temp (deg F)	Annotation
0	1763.83	105.55	Initial Hydro-static
1	15.83	104.91	Open To Flow (1)
8	17.79	105.54	Shut-In(1)
64	43.24	107.25	End Shut-In(1)
64	15.81	107.25	Open To Flow (2)
96	16.73	108.10	Shut-In(2)
124	22.01	108.79	End Shut-In(2)
125	1704.75	109.23	Final Hydro-static

Recovery

Length (ft)	Description	Volume (bbl)
1.00	Mud	0.00

* Recovery from multiple tests

Gas Rates

	Choke (inches)	Pressure (psig)	Gas Rate (Mcf/d)



**TRILOBITE
TESTING, INC**

DRILL STEM TEST REPORT

TOOL DIAGRAM

McCoy Petroleum Corporation

31-11s-19w Ellis,KS

9342 E Central
Wichita KS 67206

Massier B #1-31

Job Ticket: 58906

DST#: 2

ATTN: Dave Williams

Test Start: 2014.06.26 @ 02:03:07

Tool Information

Drill Pipe:	Length: 3430.00 ft	Diameter: 3.80 inches	Volume: 48.11 bbl	Tool Weight: 2200.00 lb
Heavy Wt. Pipe:	Length: 0.00 ft	Diameter: 0.00 inches	Volume: 0.00 bbl	Weight set on Packer: 20000.00 lb
Drill Collar:	Length: 88.00 ft	Diameter: 2.25 inches	Volume: 0.43 bbl	Weight to Pull Loose: 50000.00 lb
			<u>Total Volume: 48.54 bbl</u>	Tool Chased 0.00 ft
Drill Pipe Above KB:	4.00 ft			String Weight: Initial 42000.00 lb
Depth to Top Packer:	3541.00 ft			Final 42000.00 lb
Depth to Bottom Packer:	ft			
Interval between Packers:	47.00 ft			
Tool Length:	74.00 ft			
Number of Packers:	2	Diameter: 6.75 inches		

Tool Comments:

Tool Description

Tool Description	Length (ft)	Serial No.	Position	Depth (ft)	Accum. Lengths
Shut In Tool	5.00			3519.00	
Hydraulic tool	5.00			3524.00	
Jars	5.00			3529.00	
Safety Joint	2.00			3531.00	
Packer	5.00			3536.00	27.00 Bottom Of Top Packer
Packer	5.00			3541.00	
Stubb	1.00			3542.00	
Recorder	0.00	8897	Inside	3542.00	
Recorder	0.00	8898	Outside	3542.00	
Perforations	10.00			3552.00	
Change Over Sub	1.00			3553.00	
drill Pipe	31.00			3584.00	
Change Over Sub	1.00			3585.00	
Bullnose	3.00			3588.00	47.00 Bottom Packers & Anchor

Total Tool Length: 74.00



**TRILOBITE
TESTING, INC**

DRILL STEM TEST REPORT

FLUID SUMMARY

McCoy Petroleum Corporation

31-11s-19w Ellis,KS

9342 E Central
Wichita KS 67206

Massier B #1-31

Job Ticket: 58906

DST#: 2

ATTN: Dave Williams

Test Start: 2014.06.26 @ 02:03:07

Mud and Cushion Information

Mud Type: Gel Chem

Cushion Type:

Oil API:

deg API

Mud Weight: 9.00 lb/gal

Cushion Length:

ft

Water Salinity:

ppm

Viscosity: 58.00 sec/qt

Cushion Volume:

bbbl

Water Loss: 8.78 in³

Gas Cushion Type:

Resistivity: ohm.m

Gas Cushion Pressure:

psig

Salinity: 3200.00 ppm

Filter Cake: 1.00 inches

Recovery Information

Recovery Table

Length ft	Description	Volume bbl
1.00	Mud	0.005

Total Length: 1.00 ft Total Volume: 0.005 bbl

Num Fluid Samples: 0

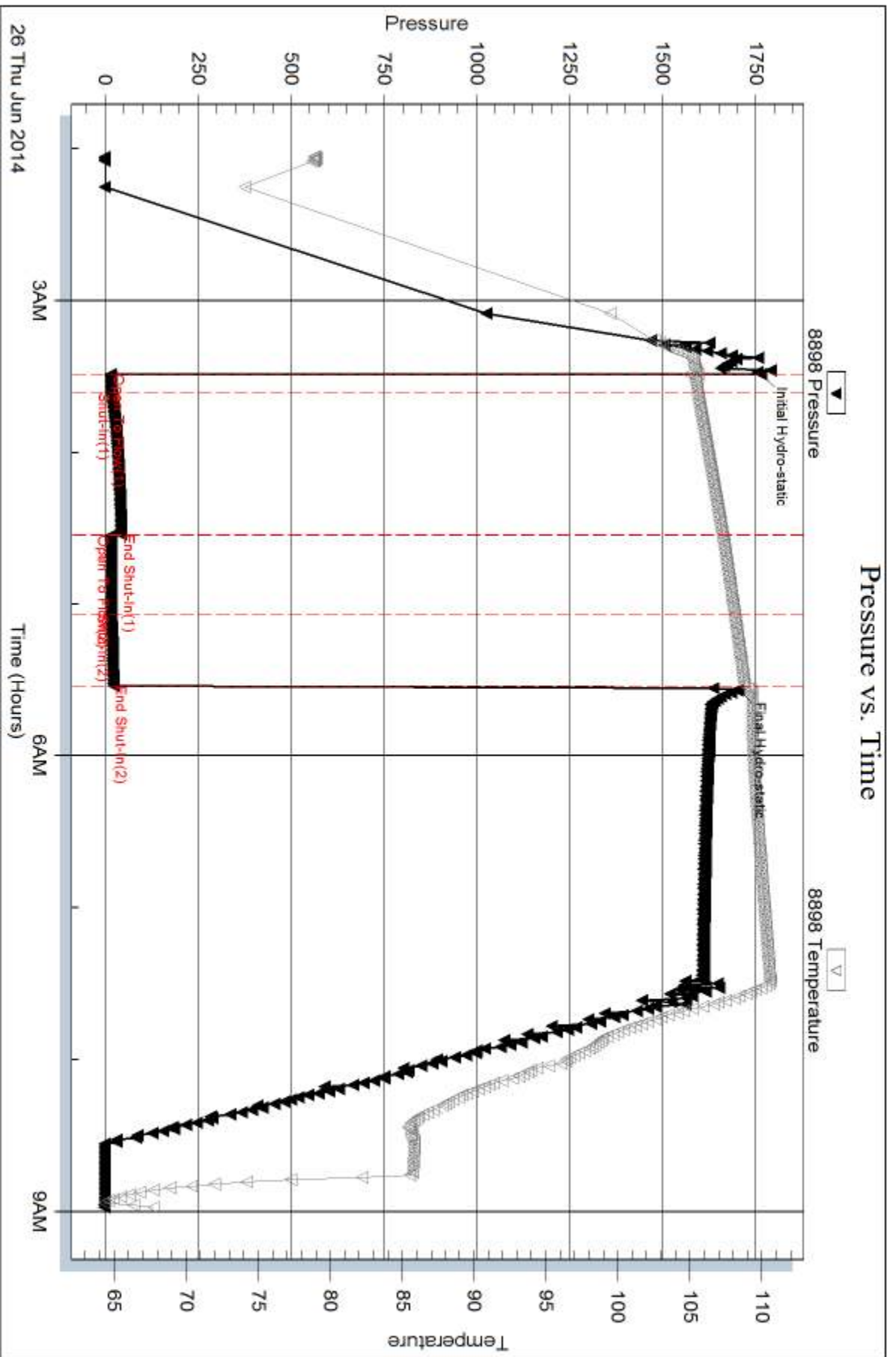
Num Gas Bombs: 0

Serial #:

Laboratory Name:

Laboratory Location:

Recovery Comments:



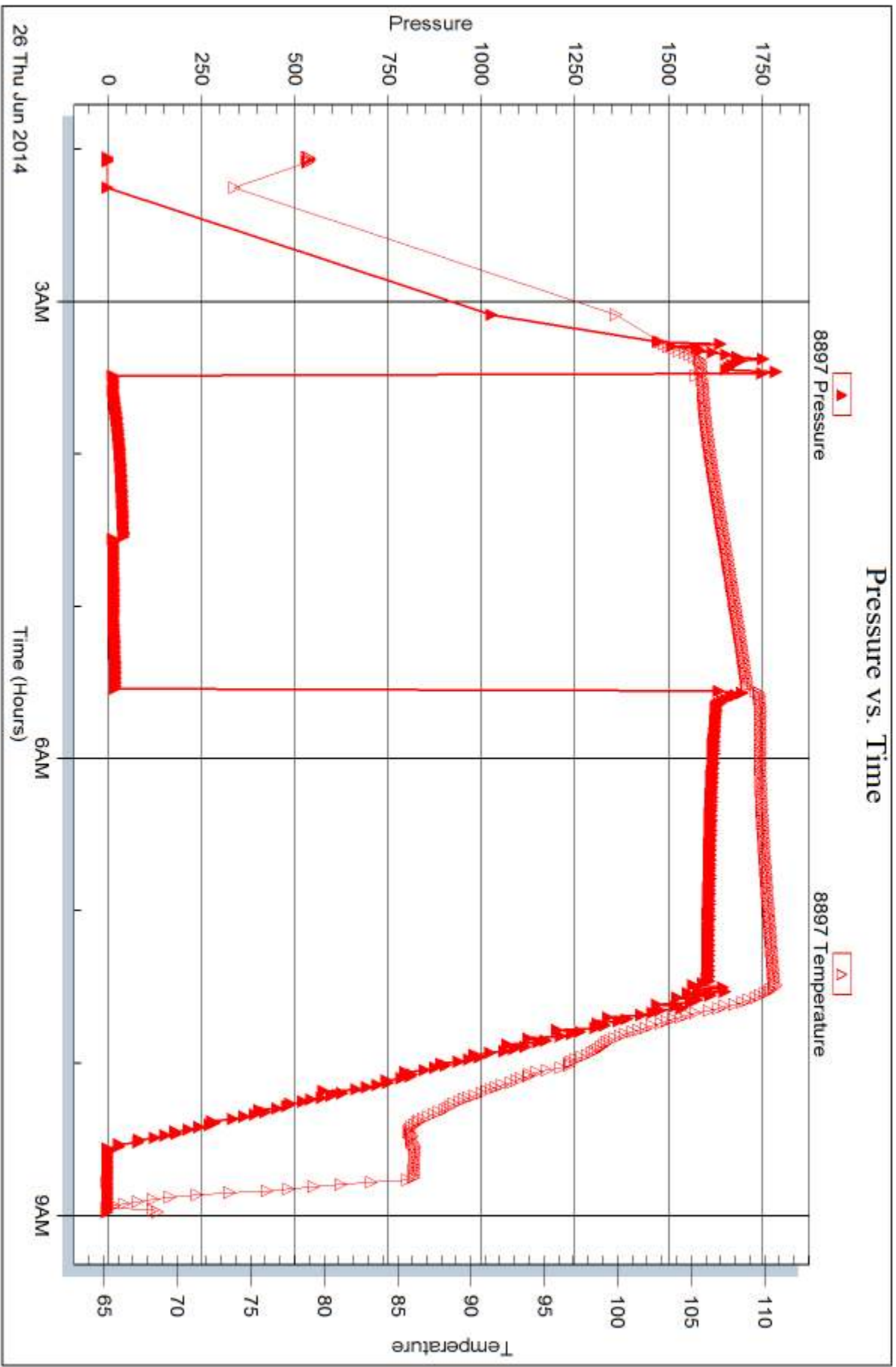
Serial #: 8897

Inside

McCoy Petroleum Corporation

Massier B #1-31

DST Test Number: 2





DRILL STEM TEST REPORT

Prepared For: **McCoy Petroleum Corporation**

9342 E Central
Wichita KS 67206

ATTN: Dave Williams

Massier B #1-31

31-11s-19w Ellis,KS

Start Date: 2014.06.27 @ 01:17:04

End Date: 2014.06.27 @ 12:02:23

Job Ticket #: 58907 DST #: 3

Trilobite Testing, Inc
PO Box 362 Hays, KS 67601
ph: 785-625-4778 fax: 785-625-5620

Printed: 2014.07.01 @ 11:37:35



**TRILOBITE
TESTING, INC**

DRILL STEM TEST REPORT

McCoy Petroleum Corporation

31-11s-19w Ellis,KS

9342 E Central
Wichita KS 67206

Massier B #1-31

Job Ticket: 58907

DST#: 3

ATTN: Dave Williams

Test Start: 2014.06.27 @ 01:17:04

GENERAL INFORMATION:

Formation: **Arbuckle**

Deviated: No Whipstock: ft (KB)

Time Tool Opened: 03:16:24

Time Test Ended: 12:02:23

Test Type: Conventional Bottom Hole (Reset)

Tester: Tate Lang

Unit No: 49

Interval: 3679.00 ft (KB) To 3722.00 ft (KB) (TVD)

Reference Elevations: 2101.00 ft (KB)

Total Depth: 3722.00 ft (KB) (TVD)

2096.00 ft (CF)

Hole Diameter: 7.88 inches Hole Condition: Good

KB to GR/CF: 5.00 ft

Serial #: 8898 Outside

Press@RunDepth: 656.19 psig @ 3686.00 ft (KB)

Capacity: 8000.00 psig

Start Date: 2014.06.27

End Date:

2014.06.27

Last Calib.:

2014.06.27

Start Time:

01:17:05

End Time:

12:02:23

Time On Btm:

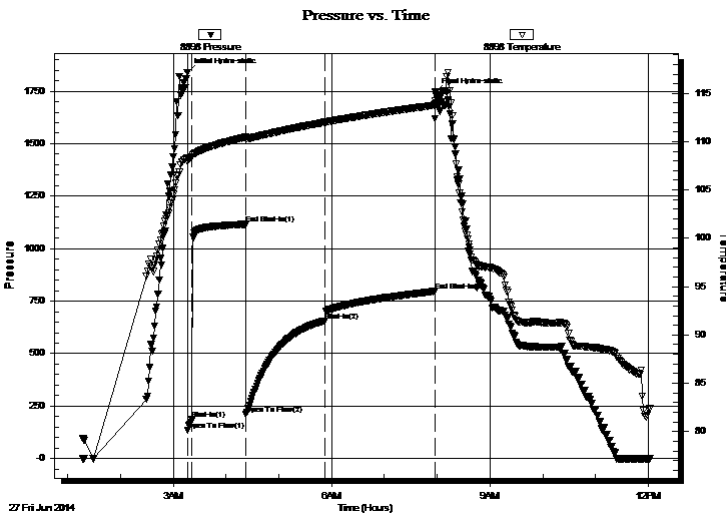
2014.06.27 @ 03:16:04

Time Off Btm:

2014.06.27 @ 07:58:04

TEST COMMENT: B.O.B. in 2 mins
Weak surface blow back built to 3 1/2"
B.O.B. in 2 mins
Dead no blow back

PRESSURE SUMMARY



Time (Min.)	Pressure (psig)	Temp (deg F)	Annotation
0	1839.64	108.30	Initial Hydro-static
1	133.46	107.89	Open To Flow (1)
6	188.85	108.41	Shut-In(1)
66	1116.08	110.46	End Shut-In(1)
67	210.17	110.28	Open To Flow (2)
156	656.19	112.00	Shut-In(2)
282	797.00	113.77	End Shut-In(2)
282	1745.63	113.88	Final Hydro-static

Recovery

Length (ft)	Description	Volume (bbl)
110.00	MCGO 5%G 75%O 20%M	0.74
1768.00	GO 25%G 75%O	24.80

* Recovery from multiple tests

Gas Rates

	Choke (inches)	Pressure (psig)	Gas Rate (Mcf/d)



**TRILOBITE
TESTING, INC**

DRILL STEM TEST REPORT

TOOL DIAGRAM

McCoy Petroleum Corporation

31-11s-19w Ellis,KS

9342 E Central
Wichita KS 67206

Massier B #1-31

Job Ticket: 58907

DST#: 3

ATTN: Dave Williams

Test Start: 2014.06.27 @ 01:17:04

Tool Information

Drill Pipe:	Length: 3585.00 ft	Diameter: 3.80 inches	Volume: 50.29 bbl	Tool Weight: 2200.00 lb
Heavy Wt. Pipe:	Length: 0.00 ft	Diameter: 0.00 inches	Volume: 0.00 bbl	Weight set on Packer: 20000.00 lb
Drill Collar:	Length: 88.00 ft	Diameter: 2.25 inches	Volume: 0.43 bbl	Weight to Pull Loose: 55000.00 lb
			<u>Total Volume: 50.72 bbl</u>	Tool Chased 0.00 ft
Drill Pipe Above KB:	21.00 ft			String Weight: Initial 46000.00 lb
Depth to Top Packer:	3679.00 ft			Final 53000.00 lb
Depth to Bottom Packer:	ft			
Interval between Packers:	43.00 ft			
Tool Length:	70.00 ft			
Number of Packers:	2	Diameter: 6.75 inches		

Tool Comments:

Tool Description

Tool Description	Length (ft)	Serial No.	Position	Depth (ft)	Accum. Lengths
Shut In Tool	5.00			3657.00	
Hydraulic tool	5.00			3662.00	
Jars	5.00			3667.00	
Safety Joint	2.00			3669.00	
Packer	5.00			3674.00	27.00 Bottom Of Top Packer
Packer	5.00			3679.00	
Stubb	1.00			3680.00	
Perforations	6.00			3686.00	
Recorder	0.00	8897	Inside	3686.00	
Recorder	0.00	8898	Outside	3686.00	
Change Over Sub	1.00			3687.00	
Drill Pipe	31.00			3718.00	
Change Over Sub	1.00			3719.00	
Bullnose	3.00			3722.00	43.00 Bottom Packers & Anchor

Total Tool Length: 70.00



**TRILOBITE
TESTING, INC**

DRILL STEM TEST REPORT

FLUID SUMMARY

McCoy Petroleum Corporation

31-11s-19w Ellis,KS

9342 E Central
Wichita KS 67206

Massier B #1-31

Job Ticket: 58907

DST#: 3

ATTN: Dave Williams

Test Start: 2014.06.27 @ 01:17:04

Mud and Cushion Information

Mud Type: Gel Chem

Cushion Type:

Oil API:

36 deg API

Mud Weight: 9.00 lb/gal

Cushion Length:

ft

Water Salinity:

ppm

Viscosity: 47.00 sec/qt

Cushion Volume:

bbbl

Water Loss: 8.38 in³

Gas Cushion Type:

Resistivity: ohm.m

Gas Cushion Pressure:

psig

Salinity: 4000.00 ppm

Filter Cake: 1.00 inches

Recovery Information

Recovery Table

Length ft	Description	Volume bbl
110.00	MCGO 5%G 75%O 20%M	0.741
1768.00	GO 25%G 75%O	24.800

Total Length: 1878.00 ft Total Volume: 25.541 bbl

Num Fluid Samples: 0

Num Gas Bombs: 0

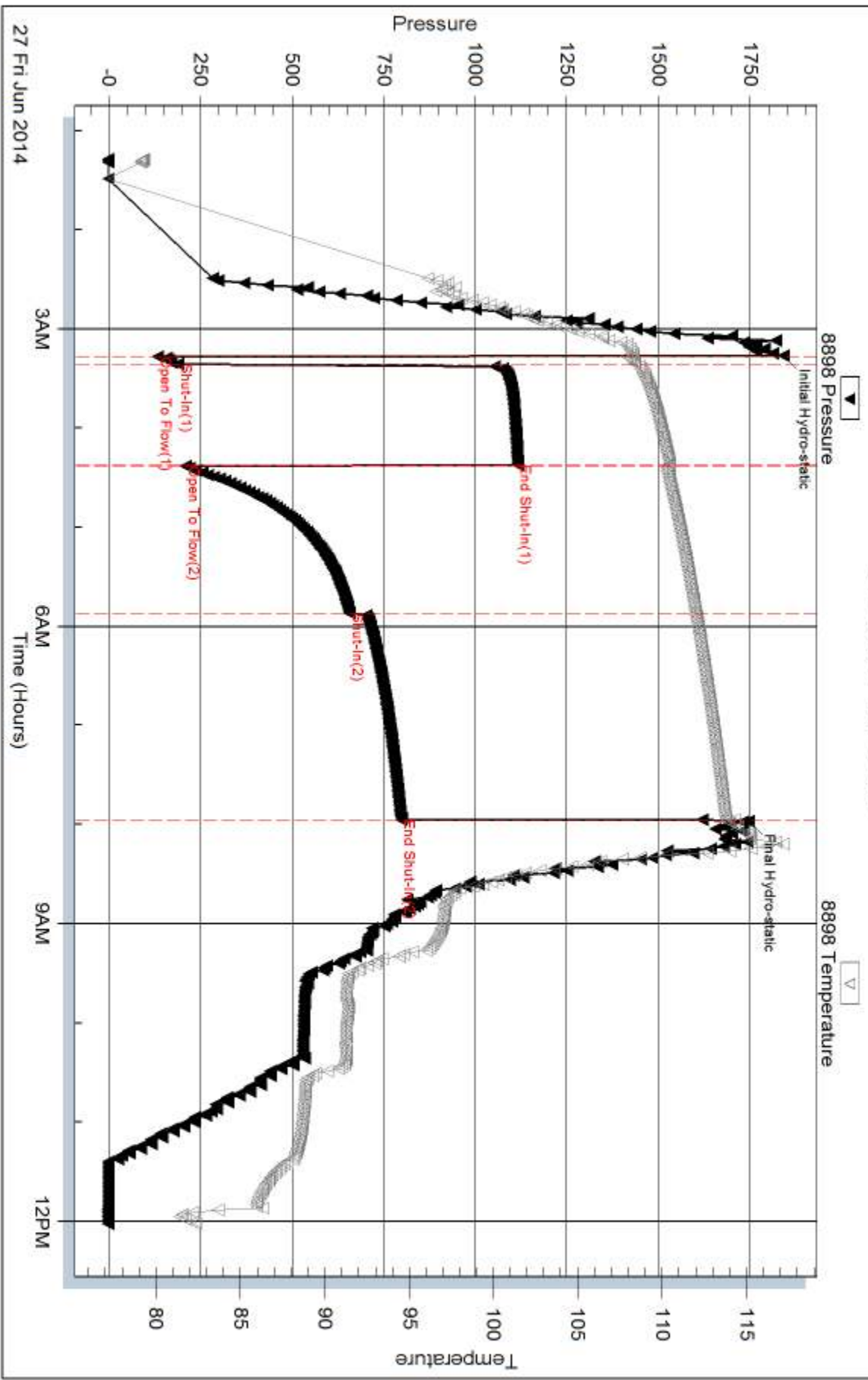
Serial #:

Laboratory Name:

Laboratory Location:

Recovery Comments:

Pressure vs. Time



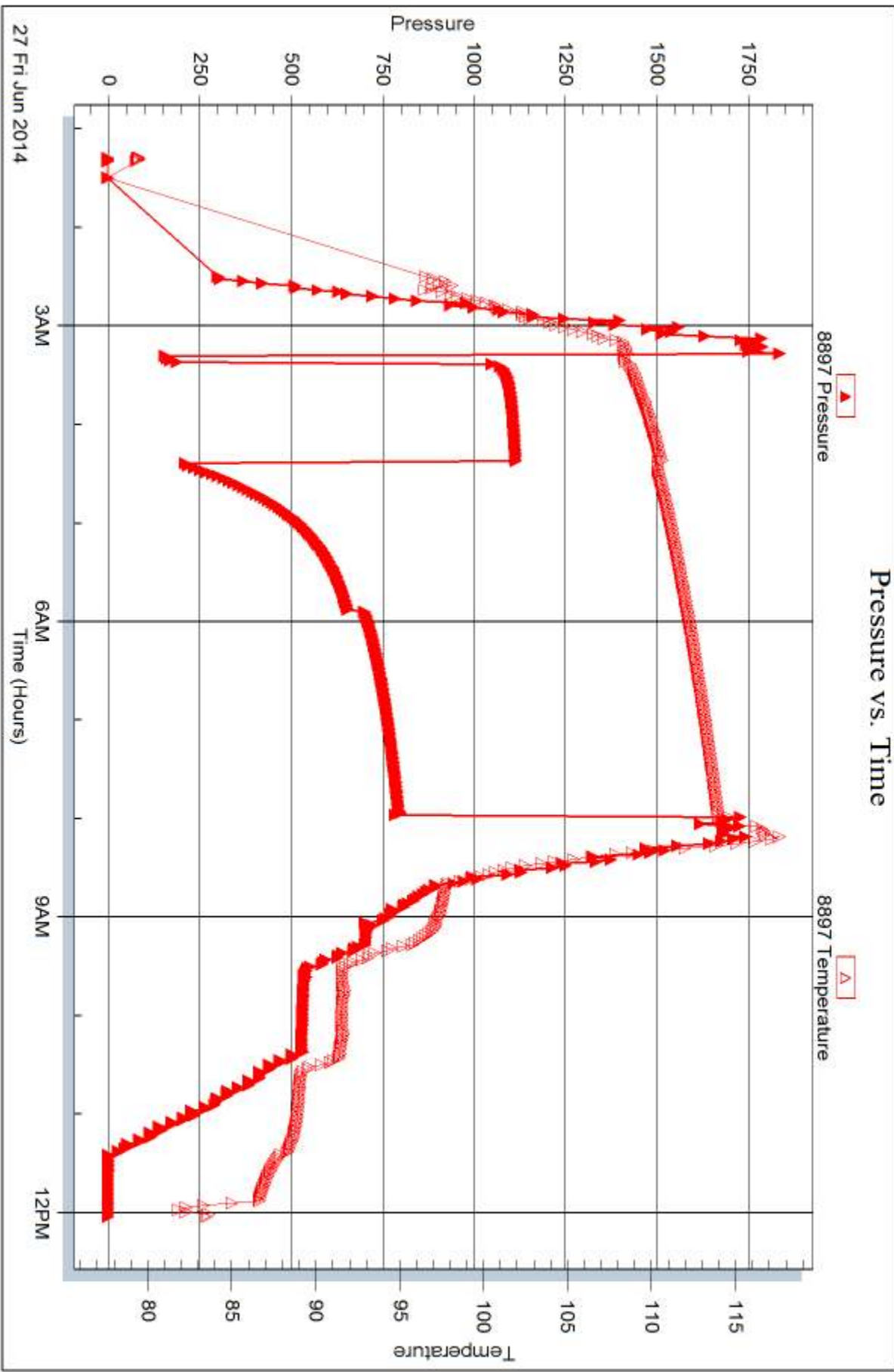
Serial #: 8897

Inside

McCoy Petroleum Corporation

Massier B #1-31

DST Test Number: 3



Trilobite Testing, Inc

Ref. No: 58907

Printed: 2014.07.01 @ 11:37:36



DRILL STEM TEST REPORT

Prepared For: **McCoy Petroleum Corporation**

9342 E Central
Wichita KS 67206

ATTN: Dave Williams

Massier B #1-31

31-11s-19w Ellis,KS

Start Date: 2014.06.27 @ 18:35:00

End Date: 2014.06.28 @ 03:08:45

Job Ticket #: 59408 DST #: 4

Trilobite Testing, Inc
PO Box 362 Hays, KS 67601
ph: 785-625-4778 fax: 785-625-5620

Printed: 2014.07.01 @ 11:18:29



**TRILOBITE
TESTING, INC**

DRILL STEM TEST REPORT

McCoy Petroleum Corporation

31-11s-19w Ellis,KS

9342 E Central
Wichita KS 67206

Massier B #1-31

Job Ticket: 59408

DST#: 4

ATTN: Dave Williams

Test Start: 2014.06.27 @ 18:35:00

GENERAL INFORMATION:

Formation: **Arbuckle**

Deviated: No Whipstock: ft (KB)

Time Tool Opened: 20:36:45

Time Test Ended: 03:08:45

Test Type: Conventional Bottom Hole (Reset)

Tester: Brett Dickinson

Unit No: 59

Interval: 3722.00 ft (KB) To 3732.00 ft (KB) (TVD)

Reference Elevations: 2101.00 ft (KB)

Total Depth: 3732.00 ft (KB) (TVD)

2096.00 ft (CF)

Hole Diameter: 7.88 inches Hole Condition: Fair

KB to GR/CF: 5.00 ft

Serial #: 8957

Inside

Press@RunDepth: 247.83 psig @ 3729.00 ft (KB)

Capacity: 8000.00 psig

Start Date: 2014.06.27

End Date:

2014.06.28

Last Calib.:

2014.06.28

Start Time: 18:35:05

End Time:

03:08:45

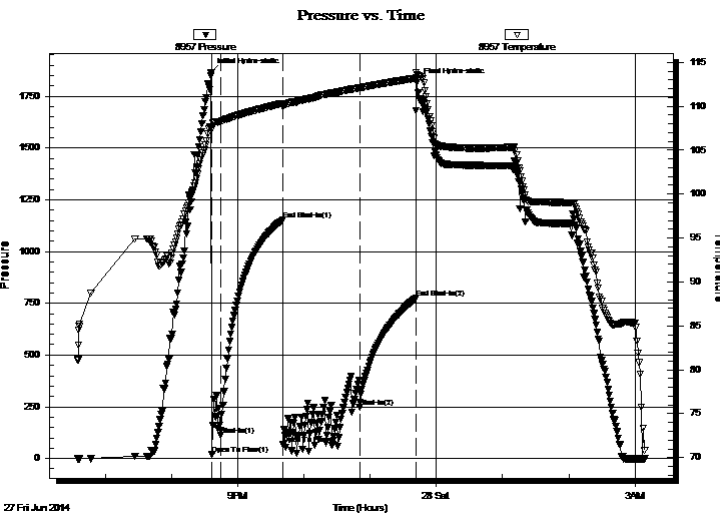
Time On Btm:

2014.06.27 @ 20:36:00

Time Off Btm:

2014.06.27 @ 23:42:45

TEST COMMENT: IF-1/4" blow
IS-No blow
FF-No blow
FS-No blow



PRESSURE SUMMARY

Time (Min.)	Pressure (psig)	Temp (deg F)	Annotation
0	1865.53	107.54	Initial Hydro-static
1	20.84	107.34	Open To Flow (1)
9	111.29	108.27	Shut-In(1)
65	1152.59	110.32	End Shut-In(1)
66	67.42	109.98	Open To Flow (2)
135	247.83	112.02	Shut-In(2)
186	774.95	113.20	End Shut-In(2)
187	1814.79	113.55	Final Hydro-static

Recovery

Length (ft)	Description	Volume (bbl)
5.00	Mud	0.02

* Recovery from multiple tests

Gas Rates

Choke (inches)	Pressure (psig)	Gas Rate (Mcf/d)



DRILL STEM TEST REPORT

McCoy Petroleum Corporation

31-11s-19w Ellis,KS

9342 E Central
Wichita KS 67206

Massier B #1-31

Job Ticket: 59408 **DST#: 4**

ATTN: Dave Williams

Test Start: 2014.06.27 @ 18:35:00

GENERAL INFORMATION:

Formation: **Arbuckle**

Deviated: No Whipstock: ft (KB)

Time Tool Opened: 20:36:45

Time Test Ended: 03:08:45

Test Type: Conventional Bottom Hole (Reset)

Tester: Brett Dickinson

Unit No: 59

Interval: 3722.00 ft (KB) To 3732.00 ft (KB) (TVD)

Reference Elevations: 2101.00 ft (KB)

Total Depth: 3732.00 ft (KB) (TVD)

2096.00 ft (CF)

Hole Diameter: 7.88 inches Hole Condition: Fair

KB to GR/CF: 5.00 ft

Serial #: 8934 Outside

Press@RunDepth: psig @ 3729.00 ft (KB)

Capacity: 8000.00 psig

Start Date: 2014.06.27

End Date: 2014.06.28

Last Calib.: 2014.06.28

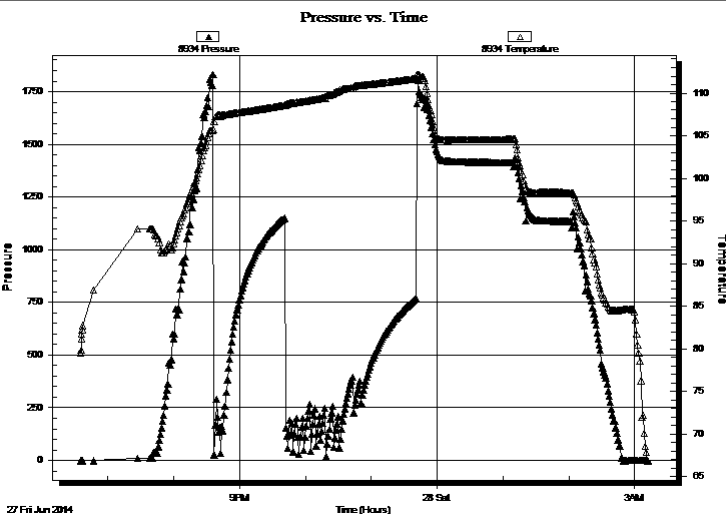
Start Time: 18:35:05

End Time: 03:12:30

Time On Btm:

Time Off Btm:

TEST COMMENT: IF-1/4" blow
IS- No blow
FF- No blow
FS- No blow



PRESSURE SUMMARY

Time (Min.)	Pressure (psig)	Temp (deg F)	Annotation

Recovery

Length (ft)	Description	Volume (bbl)
5.00	Mud	0.02

Gas Rates

Choke (inches)	Pressure (psig)	Gas Rate (Mcf/d)
----------------	-----------------	------------------

* Recovery from multiple tests



**TRILOBITE
TESTING, INC**

DRILL STEM TEST REPORT

TOOL DIAGRAM

McCoy Petroleum Corporation

31-11s-19w Ellis,KS

9342 E Central
Wichita KS 67206

Massier B #1-31

Job Ticket: 59408

DST#: 4

ATTN: Dave Williams

Test Start: 2014.06.27 @ 18:35:00

Tool Information

Drill Pipe:	Length: 3616.00 ft	Diameter: 3.80 inches	Volume: 50.72 bbl	Tool Weight:	2200.00 lb
Heavy Wt. Pipe:	Length: 0.00 ft	Diameter: 0.00 inches	Volume: 0.00 bbl	Weight set on Packer:	25000.00 lb
Drill Collar:	Length: 88.00 ft	Diameter: 2.25 inches	Volume: 0.43 bbl	Weight to Pull Loose:	60000.00 lb
			<u>Total Volume: 51.15 bbl</u>	Tool Chased	0.00 ft
Drill Pipe Above KB:	9.00 ft			String Weight: Initial	46000.00 lb
Depth to Top Packer:	3722.00 ft			Final	46000.00 lb
Depth to Bottom Packer:	ft				
Interval between Packers:	10.00 ft				
Tool Length:	37.00 ft				
Number of Packers:	2	Diameter: 6.75 inches			

Tool Comments:

Tool Description	Length (ft)	Serial No.	Position	Depth (ft)	Accum. Lengths
------------------	-------------	------------	----------	------------	----------------

Shut In Tool	5.00			3700.00	
Hydraulic tool	5.00			3705.00	
Jars	5.00			3710.00	
Safety Joint	2.00			3712.00	
Packer	5.00			3717.00	27.00 Bottom Of Top Packer
Packer	5.00			3722.00	
Stubb	1.00			3723.00	
Perforations	6.00			3729.00	
Recorder	0.00	8957	Inside	3729.00	
Recorder	0.00	8934	Outside	3729.00	
Bullnose	3.00			3732.00	10.00 Bottom Packers & Anchor

Total Tool Length: 37.00



**TRILOBITE
TESTING, INC**

DRILL STEM TEST REPORT

FLUID SUMMARY

McCoy Petroleum Corporation

31-11s-19w Ellis,KS

9342 E Central
Wichita KS 67206

Massier B #1-31

Job Ticket: 59408

DST#: 4

ATTN: Dave Williams

Test Start: 2014.06.27 @ 18:35:00

Mud and Cushion Information

Mud Type: Gel Chem

Cushion Type:

Oil API:

deg API

Mud Weight: 9.00 lb/gal

Cushion Length:

ft

Water Salinity:

ppm

Viscosity: 57.00 sec/qt

Cushion Volume:

bbf

Water Loss: 8.77 in³

Gas Cushion Type:

Resistivity: ohm.m

Gas Cushion Pressure:

psig

Salinity: 2800.00 ppm

Filter Cake: 1.00 inches

Recovery Information

Recovery Table

Length ft	Description	Volume bbf
5.00	Mud	0.025

Total Length: 5.00 ft Total Volume: 0.025 bbf

Num Fluid Samples: 0

Num Gas Bombs: 0

Serial #:

Laboratory Name:

Laboratory Location:

Recovery Comments:

Serial #: 8957

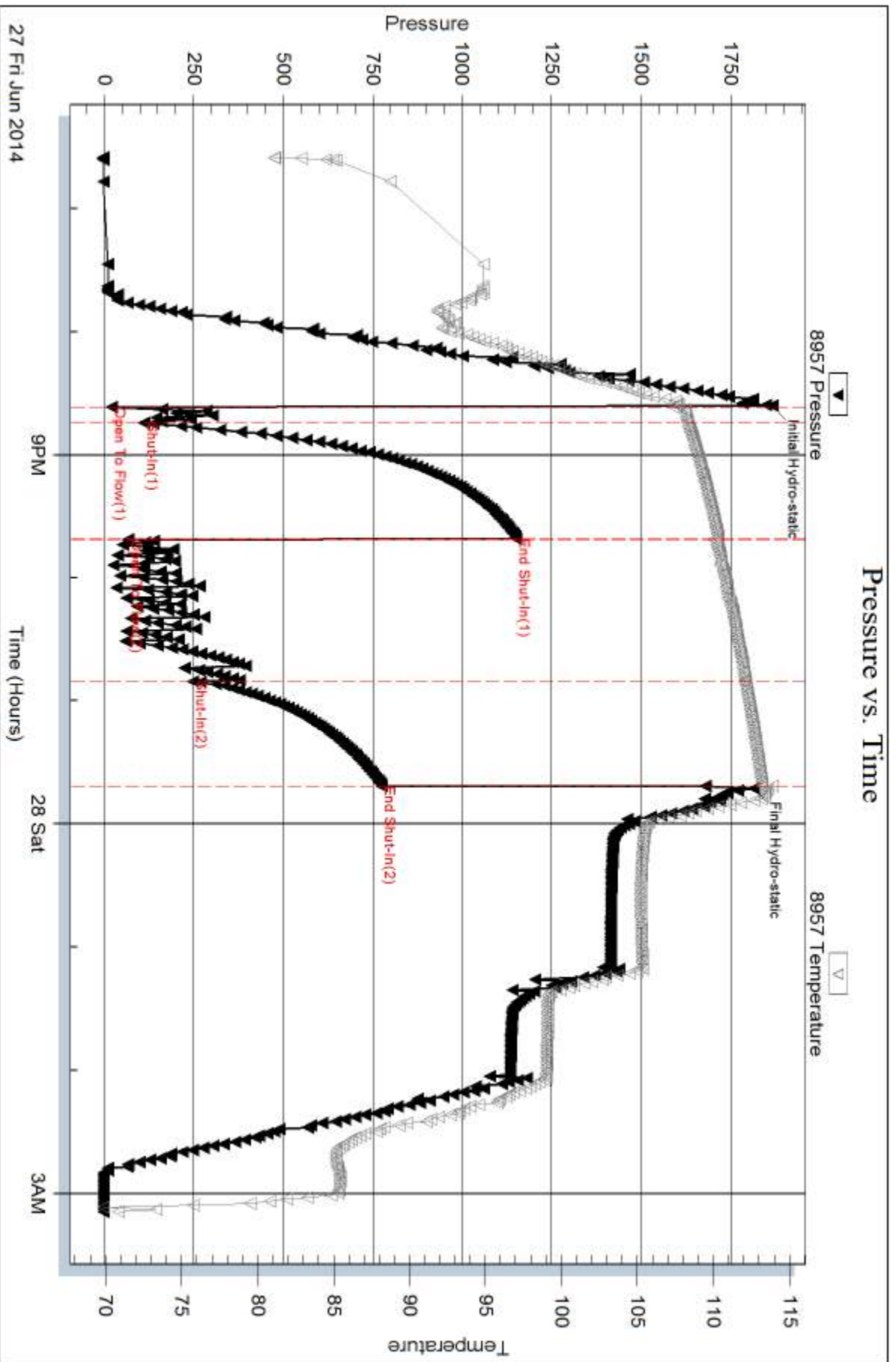
Inside

McCoy Petroleum Corporation

Massier B #1-31

DST Test Number: 4

Pressure vs. Time



Trilobite Testing, Inc

Ref. No: 59408

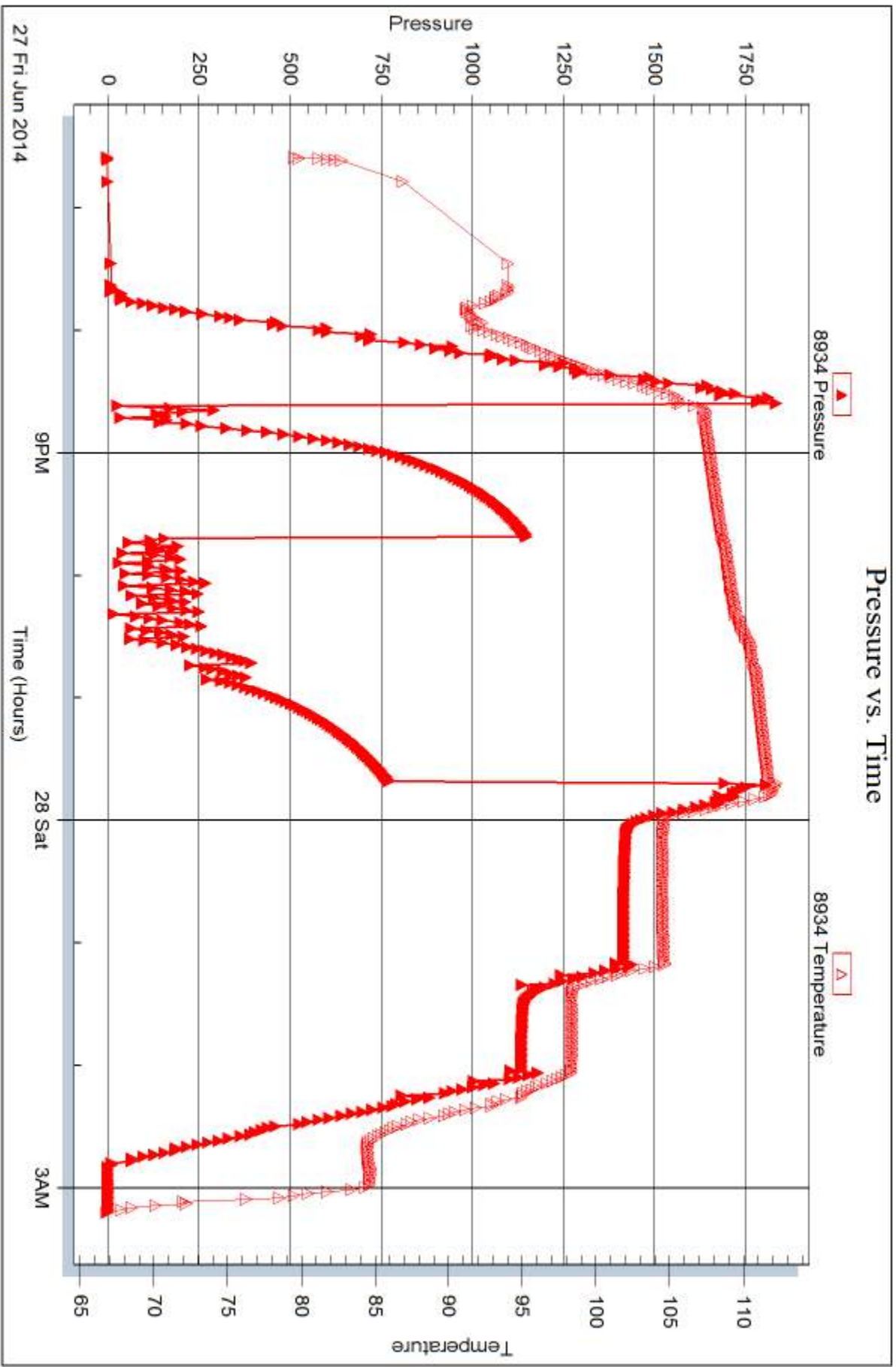
Printed: 2014.07.01 @ 11:18:30

Serial #: 8934

Outside McCoy Petroleum Corporation

Massier B #1-31

DST Test Number: 4



Trilobite Testing, Inc

Ref. No: 59408

Printed: 2014.07.01 @ 11:18:31



DRILL STEM TEST REPORT

Prepared For: **McCoy Petroleum Corporation**

9342 E Central
Wichita KS 67206

ATTN: Dave Williams

Massier B #1-31

31-11s-19w Ellis,KS

Start Date: 2014.06.28 @ 18:10:48

End Date: 2014.06.29 @ 04:23:28

Job Ticket #: 58908 DST #: 5

Trilobite Testing, Inc

PO Box 362 Hays, KS 67601

ph: 785-625-4778 fax: 785-625-5620

Printed: 2014.07.01 @ 11:15:29



TRILOBITE TESTING, INC

DRILL STEM TEST REPORT

McCoy Petroleum Corporation

31-11s-19w Ellis,KS

9342 E Central
Wichita KS 67206

Massier B #1-31

Job Ticket: 58908

DST#: 5

ATTN: Dave Williams

Test Start: 2014.06.28 @ 18:10:48

GENERAL INFORMATION:

Formation: **Conglomerate - Arbuc**

Deviated: No Whipstock: ft (KB)

Time Tool Opened: 20:16:28

Time Test Ended: 04:23:28

Test Type: Conventional Straddle (Reset)

Tester: Tate Lang

Unit No: 49

Interval: **3667.00 ft (KB) To 3760.00 ft (KB) (TVD)**

Reference Elevations: 2101.00 ft (KB)

Total Depth: 3840.00 ft (KB) (TVD)

2096.00 ft (CF)

Hole Diameter: 7.88 inches Hole Condition: Good

KB to GR/CF: 5.00 ft

Serial #: 8898 Outside

Press@RunDepth: 545.80 psig @ 3668.00 ft (KB)

Capacity: 8000.00 psig

Start Date: 2014.06.28

End Date:

2014.06.29

Last Calib.:

2014.06.29

Start Time: 18:10:49

End Time:

04:23:28

Time On Btm:

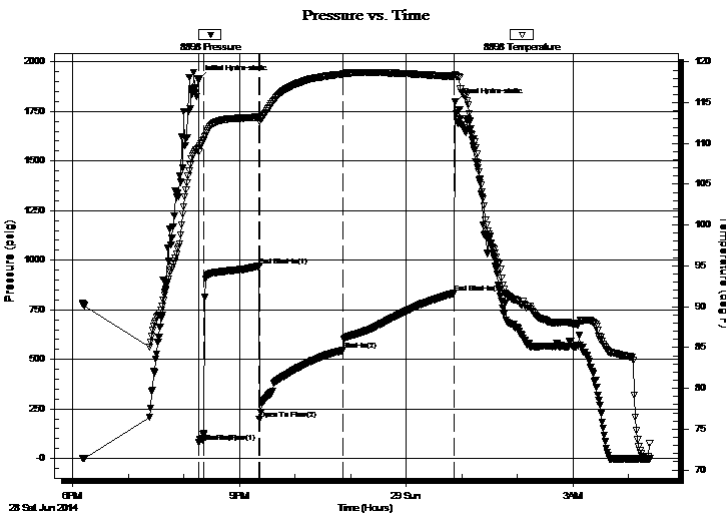
2014.06.28 @ 20:16:08

Time Off Btm:

2014.06.29 @ 00:52:57

TEST COMMENT: B.O.B. In 2 mins
Weak surface blow back built to 1/2"
B.O.B. in 3 mins
Dead no blow back

PRESSURE SUMMARY



Time (Min.)	Pressure (psig)	Temp (deg F)	Annotation
0	1908.98	109.46	Initial Hydro-static
1	81.33	108.96	Open To Flow (1)
6	125.09	110.45	Shut-In(1)
66	971.15	113.24	End Shut-In(1)
66	197.98	112.70	Open To Flow (2)
156	545.80	118.50	Shut-In(2)
276	833.48	118.19	End Shut-In(2)
277	1796.47	118.47	Final Hydro-static

Recovery

Length (ft)	Description	Volume (bbl)
110.00	GOCM 5%G 35%O 60%M	0.74
1408.00	GO 30%G 70%O	19.75

* Recovery from multiple tests

Gas Rates

Choke (inches)	Pressure (psig)	Gas Rate (Mcf/d)



DRILL STEM TEST REPORT

McCoy Petroleum Corporation

31-11s-19w Ellis,KS

9342 E Central
Wichita KS 67206

Massier B #1-31

Job Ticket: 58908

DST#: 5

ATTN: Dave Williams

Test Start: 2014.06.28 @ 18:10:48

GENERAL INFORMATION:

Formation: **Conglomerate - Arbuc**

Deviated: No Whipstock: ft (KB)

Time Tool Opened: 20:16:28

Time Test Ended: 04:23:28

Test Type: Conventional Straddle (Reset)

Tester: Tate Lang

Unit No: 49

Interval: **3667.00 ft (KB) To 3760.00 ft (KB) (TVD)**

Reference Elevations: 2101.00 ft (KB)

Total Depth: 3840.00 ft (KB) (TVD)

2096.00 ft (CF)

Hole Diameter: 7.88 inches Hole Condition: Good

KB to GR/CF: 5.00 ft

Serial #: 8897 Inside

Press@RunDepth: psig @ 3668.00 ft (KB)

Capacity: 8000.00 psig

Start Date: 2014.06.28

End Date:

2014.06.29

Last Calib.:

2014.06.29

Start Time: 18:10:41

End Time:

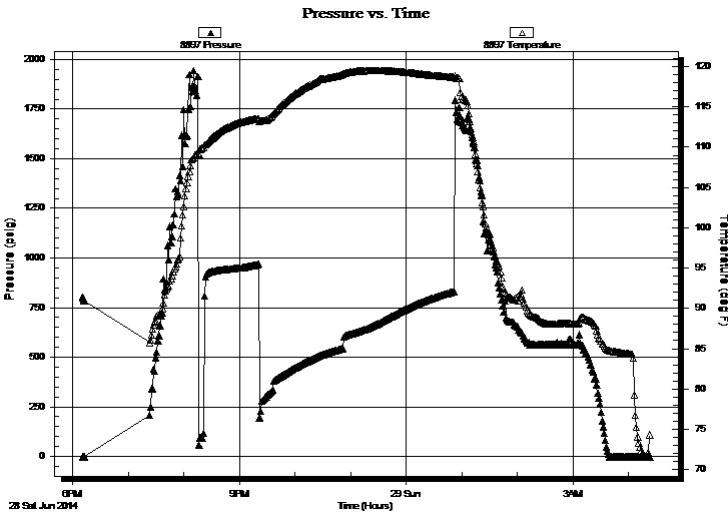
04:23:20

Time On Btm:

Time Off Btm:

TEST COMMENT: B.O.B. In 2 mins
Weak surface blow back built to 1/2"
B.O.B. in 3 mins
Dead no blow back

PRESSURE SUMMARY



Time (Min.)	Pressure (psig)	Temp (deg F)	Annotation

Recovery

Length (ft)	Description	Volume (bbl)
110.00	GOCM 5%G 35%O 60%M	0.74
1408.00	GO 30%G 70%O	19.75

Gas Rates

Choke (inches)	Pressure (psig)	Gas Rate (Mcf/d)

* Recovery from multiple tests



**TRILOBITE
TESTING, INC**

DRILL STEM TEST REPORT

McCoy Petroleum Corporation

31-11s-19w Ellis,KS

9342 E Central
Wichita KS 67206

Massier B #1-31

Job Ticket: 58908

DST#: 5

ATTN: Dave Williams

Test Start: 2014.06.28 @ 18:10:48

GENERAL INFORMATION:

Formation: **Conglomerate - Arbuc**

Deviated: No Whipstock: ft (KB)

Time Tool Opened: 20:16:28

Time Test Ended: 04:23:28

Test Type: Conventional Straddle (Reset)

Tester: Tate Lang

Unit No: 49

Interval: 3667.00 ft (KB) To 3760.00 ft (KB) (TVD)

Reference Elevations: 2101.00 ft (KB)

Total Depth: 3840.00 ft (KB) (TVD)

2096.00 ft (CF)

Hole Diameter: 7.88 inches Hole Condition: Good

KB to GR/CF: 5.00 ft

Serial #: 8354 Below (Straddle)

Press@RunDepth: psig @ 3776.00 ft (KB)

Capacity: 8000.00 psig

Start Date: 2014.06.28

End Date:

2014.06.29

Last Calib.:

2014.06.29

Start Time: 18:10:56

End Time:

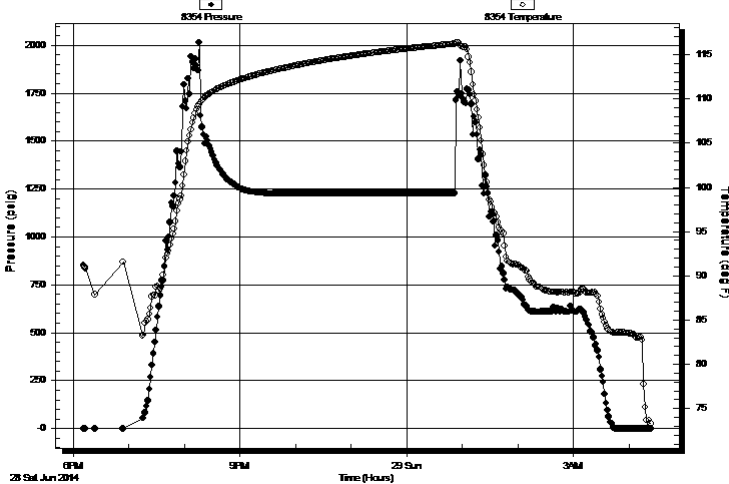
04:23:25

Time On Btm:

Time Off Btm:

TEST COMMENT: B.O.B. In 2 mins
Weak surface blow back built to 1/2"
B.O.B. in 3 mins
Dead no blow back

Pressure vs. Time



PRESSURE SUMMARY

Time (Min.)	Pressure (psig)	Temp (deg F)	Annotation
-------------	-----------------	--------------	------------

Recovery

Length (ft)	Description	Volume (bbl)
110.00	GOCM 5%G 35%O 60%M	0.74
1408.00	GO 30%G 70%O	19.75

Gas Rates

	Choke (inches)	Pressure (psig)	Gas Rate (Mcf/d)
--	----------------	-----------------	------------------

* Recovery from multiple tests



**TRILOBITE
TESTING, INC**

DRILL STEM TEST REPORT

TOOL DIAGRAM

McCoy Petroleum Corporation

31-11s-19w Ellis,KS

9342 E Central
Wichita KS 67206

Massier B #1-31

Job Ticket: 58908

DST#: 5

ATTN: Dave Williams

Test Start: 2014.06.28 @ 18:10:48

Tool Information

Drill Pipe:	Length: 3581.00 ft	Diameter: 3.80 inches	Volume: 50.23 bbl	Tool Weight: 2200.00 lb
Heavy Wt. Pipe:	Length: 0.00 ft	Diameter: 0.00 inches	Volume: 0.00 bbl	Weight set on Packer: 25000.00 lb
Drill Collar:	Length: 88.00 ft	Diameter: 2.25 inches	Volume: 0.43 bbl	Weight to Pull Loose: 60000.00 lb
			<u>Total Volume: 50.66 bbl</u>	Tool Chased 0.00 ft
Drill Pipe Above KB:	29.00 ft			String Weight: Initial 46000.00 lb
Depth to Top Packer:	3667.00 ft			Final 55000.00 lb
Depth to Bottom Packer:	3760.00 ft			
Interval between Packers:	93.00 ft			
Tool Length:	205.00 ft			
Number of Packers:	2	Diameter: 6.75 inches		

Tool Comments:

Tool Description

Length (ft) Serial No. Position Depth (ft) Accum. Lengths

Tool Description	Length (ft)	Serial No.	Position	Depth (ft)	Accum. Lengths
Shut In Tool	5.00			3645.00	
Hydraulic tool	5.00			3650.00	
Jars	5.00			3655.00	
Safety Joint	2.00			3657.00	
Packer	5.00			3662.00	27.00 Bottom Of Top Packer
Packer	5.00			3667.00	
Stubb	1.00			3668.00	
Recorder	0.00	8897	Inside	3668.00	
Recorder	0.00	8898	Outside	3668.00	
Perforations	1.00			3669.00	
Change Over Sub	1.00			3670.00	
drill Pipe	64.00			3734.00	
Change Over Sub	1.00			3735.00	
perforations	20.00			3755.00	
Blank Off Sub	1.00			3756.00	
Blank Spacing	4.00			3760.00	93.00 Tool Interval
Packer	5.00			3765.00	
Stubb	1.00			3766.00	
Perforations	10.00			3776.00	
Recorder	0.00	8354	Below	3776.00	
Change Over Sub	1.00			3777.00	
Drill Pipe	64.00			3841.00	
Change Over Sub	1.00			3842.00	
Bullnose	3.00			3845.00	85.00 Bottom Packers & Anchor
Total Tool Length:	205.00				



**TRILOBITE
TESTING, INC**

DRILL STEM TEST REPORT

FLUID SUMMARY

McCoy Petroleum Corporation

31-11s-19w Ellis,KS

9342 E Central
Wichita KS 67206

Massier B #1-31

Job Ticket: 58908

DST#: 5

ATTN: Dave Williams

Test Start: 2014.06.28 @ 18:10:48

Mud and Cushion Information

Mud Type: Gel Chem

Cushion Type:

Oil API:

36 deg API

Mud Weight: 9.00 lb/gal

Cushion Length:

ft

Water Salinity:

ppm

Viscosity: 59.00 sec/qt

Cushion Volume:

bbbl

Water Loss: 7.99 in³

Gas Cushion Type:

Resistivity: ohm.m

Gas Cushion Pressure:

psig

Salinity: 3800.00 ppm

Filter Cake: 1.00 inches

Recovery Information

Recovery Table

Length ft	Description	Volume bbl
110.00	GOCM 5%G 35%O 60%M	0.741
1408.00	GO 30%G 70%O	19.751

Total Length: 1518.00 ft Total Volume: 20.492 bbl

Num Fluid Samples: 0

Num Gas Bombs: 0

Serial #:

Laboratory Name:

Laboratory Location:

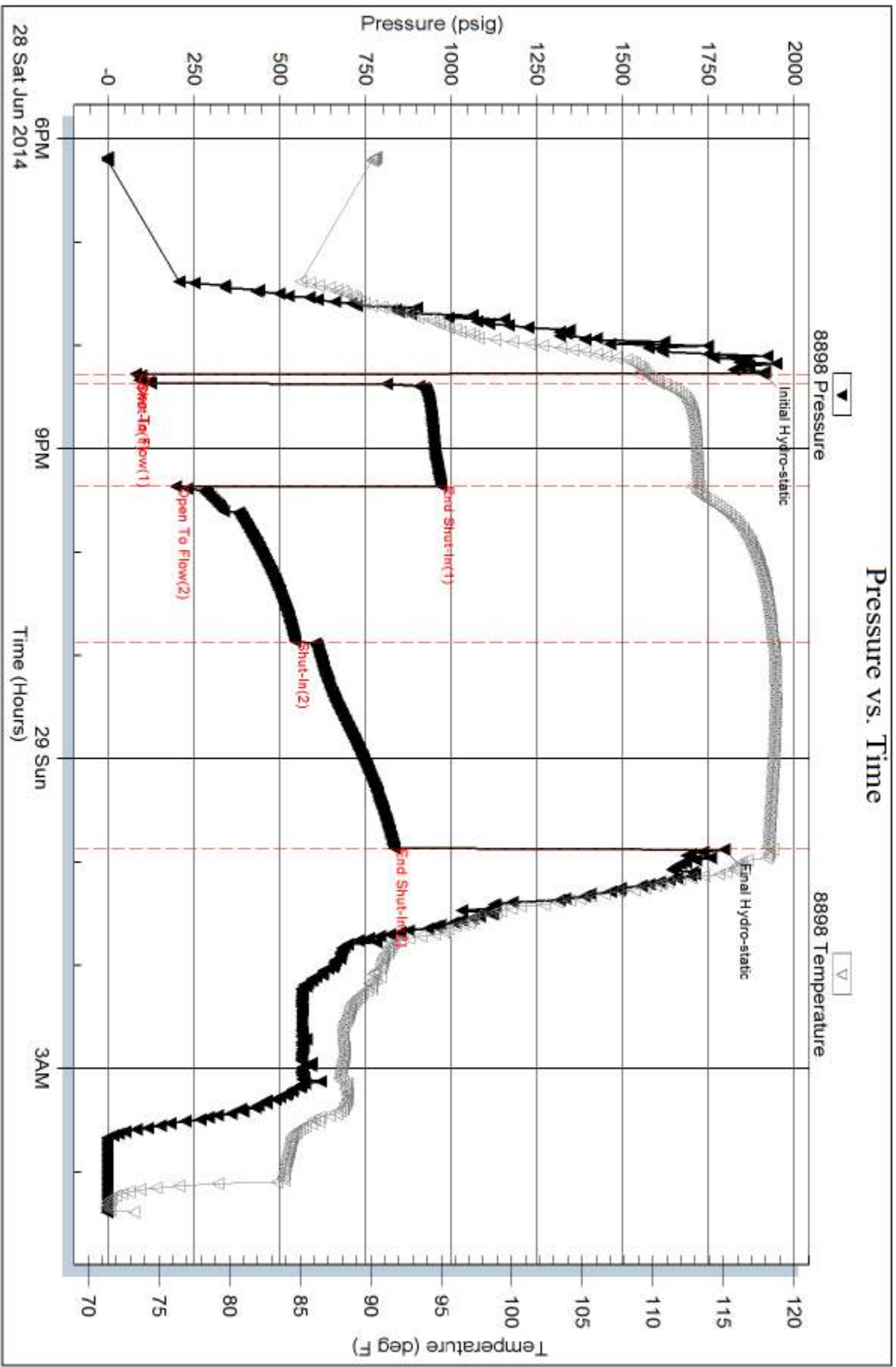
Recovery Comments:

Serial #: 8898

Outside McCoy Petroleum Corporation

Massier B #1-31

DST Test Number: 5



Triobite Testing, Inc

Ref. No: 58908

Printed: 2014.07.01 @ 11:15:31

Serial #: 8897

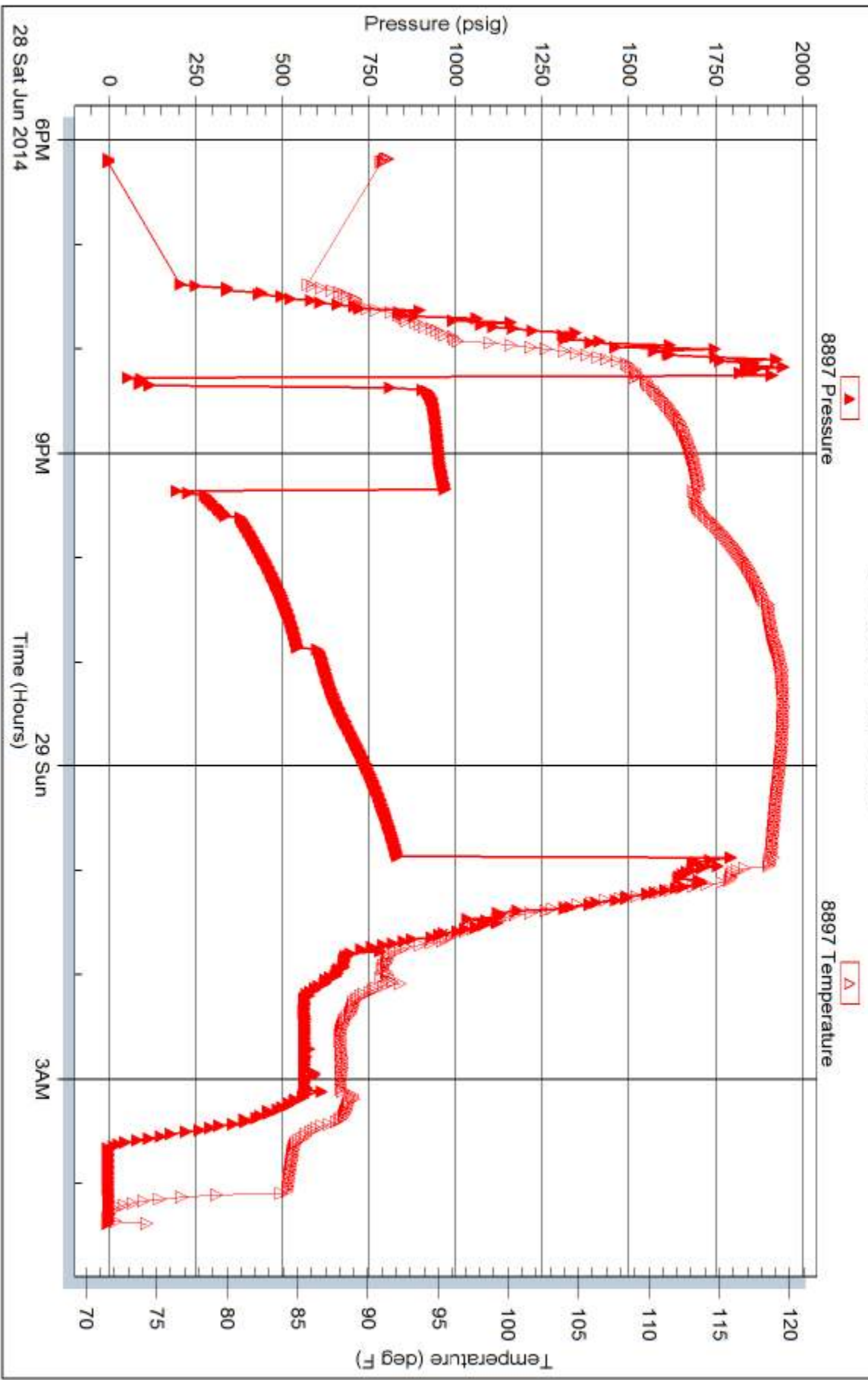
Inside

McCoy Petroleum Corporation

Massier B #1-31

DST Test Number: 5

Pressure vs. Time

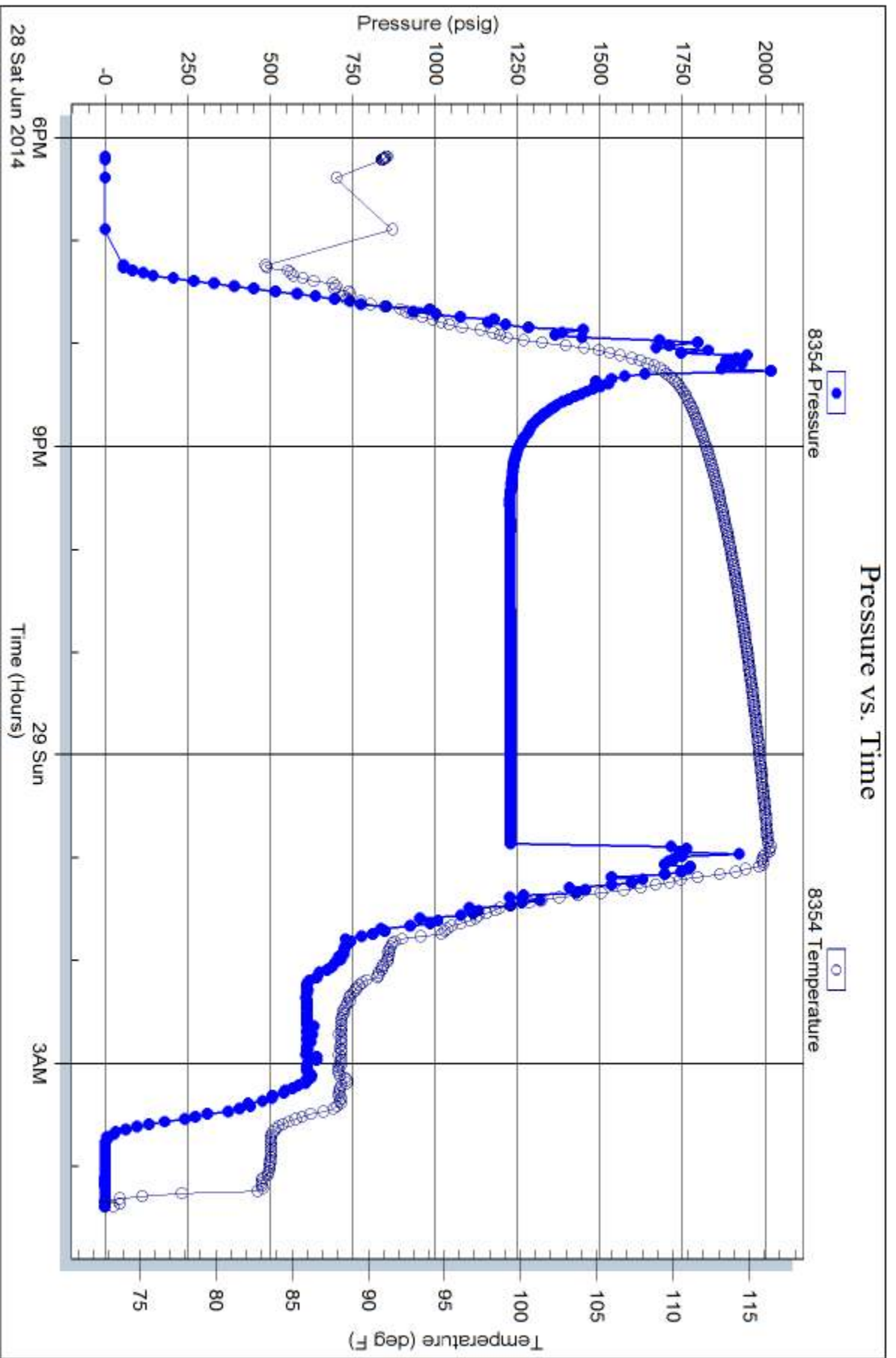


Serial #: 8354

Below (Str ~~Adley~~) Petroleum Corporation

Massier B #1-31

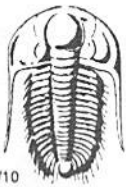
DST Test Number: 5



Trilobite Testing, Inc

Ref. No: 58908

Printed: 2014.07.01 @ 11:15:31



TRILOBITE TESTING INC.

1515 Commerce Parkway • Hays, Kansas 67601

Test Ticket

NO. 58905

4/10

Well Name & No. Mossie "B" #1-31 Test No. 1 Date 6-25-14
 Company M. Co. Petroleum Corporation Elevation 2101 KB 2099 GL
 Address 9342 E Central ~~Wichita~~ KS 67206
 Co. Rep / Geo. Evyn Stone Rig Murfin #24
 Location: Sec. 31 Twp. 11E Rge. 19W Co. Ellis State Ks

Interval Tested 3457 3492 Zone Tested LHC E, F, G
 Anchor Length 35 Drill Pipe Run _____ Mud Wt. 8.8
 Top Packer Depth 3452 Drill Collars Run 88 Vis 5.7
 Bottom Packer Depth 3457 Wt. Pipe Run 0 WL 8.8
 Total Depth 3492 Chlorides 2800 ppm System LCM 1.4

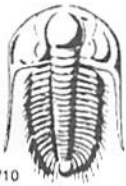
Blow Description Weak surface blow built to 1/2 in
Dead no blow back
Weak surface blow built to 3 1/2 in
Dead no blow back

Rec	Feet of	%gas	%oil	%water	%mud
Rec	Feet of	%gas	%oil	%water	%mud
Rec <u>100</u>	Feet of <u>MCW</u>	%gas	%oil	<u>80</u> %water	<u>20</u> %mud
Rec	Feet of	%gas	%oil	%water	%mud

Rec Total 100 BHT 113 Gravity _____ API RW 213 @ 80 ° F Chlorides 27000 ppm
 (A) Initial Hydrostatic 1699 Test 1150 T-On Location 0600
 (B) First Initial Flow B Jars 250 T-Started 0642
 (C) First Final Flow 20 Safety Joint 75 T-Open 0909
 (D) Initial Shut-In 522 Circ Sub _____ T-Pulled 1349
 (E) Second Initial Flow 19 Hourly Standby _____ T-Out 1521
 (F) Second Final Flow 64 Mileage 40 R/K 62 Comments _____
 (G) Final Shut-In 482 Sampler _____
 (H) Final Hydrostatic 1655 Straddle _____ Ruined Shale Packer _____
 Shale Packer _____ Ruined Packer _____
 Extra Packer _____ Extra Copies _____

Initial Open 5
 Initial Shut-In 60
 Final Flow 90
 Final Shut-In 120
 Sub Total 1537
 Total 1537
 MP/DST Disc't _____

Approved By _____ Our Representative [Signature]
 Trilobite Testing Inc. shall not be liable for damaged of any kind of the property or personnel of the one for whom a test is made, or for any loss suffered or sustained, directly or indirectly, through the use of its equipment, or its statements or opinion concerning the results of any test, tools lost or damaged in the hole shall be paid for at cost by the party for whom the test is made.



TRILOBITE TESTING INC.

1515 Commerce Parkway • Hays, Kansas 67601

Test Ticket

NO. 58906

Well Name & No. Massier "B" # 1-31 Test No. 1 Date 6-18-76
 Company McCoy Petroleum Corporation Elevation 2101 KB 2096 GL
 Address _____
 Co. Rep / Geo. Dave Williams Rig Murfin #24
 Location: Sec. 31 Twp. 11S Rge. 19W Co. Ellis State KS

Interval Tested 3541 3588 Zone Tested LRC I & J
 Anchor Length 47 Drill Pipe Run 343 0 Mud Wt. 92
 Top Packer Depth 3536 Drill Collars Run 88 Vis 58
 Bottom Packer Depth 3541 Wt. Pipe Run 0 WL 8.8
 Total Depth 3588 Chlorides 3200 ppm System LCM 37

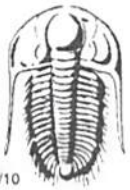
Blow Description Weak surface blow built to 1/4 in
Dead no flow back
Dead no flow
Dead no flow ~~back~~ back

Rec	Feet of	%gas	%oil	%water	%mud
Rec	Feet of	%gas	%oil	%water	%mud
Rec <u>1</u>	Feet of <u>Mud</u>	%gas	%oil	%water	<u>100</u> %mud
Rec	Feet of	%gas	%oil	%water	%mud
Rec	Feet of	%gas	%oil	%water	%mud

Rec Total 1 BHT 110 Gravity _____ API RW _____ @ _____ ° F Chlorides _____ ppm

(A) Initial Hydrostatic <u>176.4</u>	<input checked="" type="checkbox"/> Test <u>1150</u>	T-On Location <u>0145</u>
(B) First Initial Flow <u>16</u>	<input checked="" type="checkbox"/> Jars <u>250</u>	T-Started <u>0203</u>
(C) First Final Flow <u>18</u>	<input checked="" type="checkbox"/> Safety Joint <u>75</u>	T-Open <u>0329</u>
(D) Initial Shut-In <u>43</u>	<input checked="" type="checkbox"/> Circ Sub <u>N/C</u>	T-Pulled <u>0534</u>
(E) Second Initial Flow <u>16</u>	<input type="checkbox"/> Hourly Standby _____	T-Out <u>08'58</u>
(F) Second Final Flow <u>17</u>	<input checked="" type="checkbox"/> Mileage <u>62</u>	Comments <u>Shut down</u>
(G) Final Shut-In <u>22</u>	<input type="checkbox"/> Sampler _____	<u>for 2 hrs for</u>
(H) Final Hydrostatic <u>1705</u>	<input type="checkbox"/> Straddle _____	<u>Rain & lightning</u>
Initial Open <u>5</u>	<input type="checkbox"/> Shale Packer _____	<input type="checkbox"/> Ruined Shale Packer _____
Initial Shut-In <u>60</u>	<input type="checkbox"/> Shale Packer _____	<input type="checkbox"/> Ruined Packer _____
Final Flow <u>30</u>	<input type="checkbox"/> Extra Packer _____	<input type="checkbox"/> Extra Copies _____
Final Shut-In <u>30</u>	<input type="checkbox"/> Extra Recorder _____	Sub Total <u>0</u>
	<input type="checkbox"/> Day Standby _____	Total <u>1537</u>
	<input type="checkbox"/> Accessibility _____	MP/DST Disc't _____
	Sub Total <u>1537</u>	

Approved By _____ Our Representative [Signature]
 Trilobite Testing Inc. shall not be liable for damaged of any kind of the property or personnel of the one for whom a test is made, or for any loss suffered or sustained, directly or indirectly, through the use of its equipment, or its statements or opinion concerning the results of any test, tools lost or damaged in the hole shall be paid for at cost by the party for whom the test is made.



TRILOBITE TESTING INC.

1515 Commerce Parkway • Hays, Kansas 67601

Test Ticket

NO. 58907

Well Name & No. Massier "B" #1-31 Test No. 3 Date 6-27-14
 Company McCoy Petroleum Corporation Elevation 2101 KB 2096 GL
 Address _____
 Co. Rep / Geo. Dave Williams Rig MuFin #24
 Location: Sec. 31 Twp. 11S Rge. 19W Co. Ellis State KS

Interval Tested 3679 3722 Zone Tested Arbuckle
 Anchor Length _____ Drill Pipe Run 3585 Mud Wt. 9.0
 Top Packer Depth _____ Drill Collars Run 88 Vis 47
 Bottom Packer Depth 3679 Wt. Pipe Run 0 WL 8.4
 Total Depth 3722 Chlorides 4000 ppm System LCM 3H

Blow Description B.O.B. IN 2mins
Weak surface blow back built to 3 1/2 in
B.O.B. IN 2mins
Dec'd no blow back

Rec	Feet of	%gas	%oil	%water	%mud
Rec <u>110</u>	Feet of <u>MCGO</u>	<u>5</u>	<u>75</u>	<u>20</u>	
Rec <u>1769</u>	Feet of <u>GO</u>	<u>25</u>	<u>75</u>		
Rec _____	Feet of _____	%gas	%oil	%water	%mud
Rec _____	Feet of _____	%gas	%oil	%water	%mud

Rec Total 1878 BHT 114 Gravity 36 API RW _____ @ _____ °F Chlorides _____ ppm
 (A) Initial Hydrostatic 1840 Test 1150 T-On Location 0050
 (B) First Initial Flow 133 Jars 250 T-Started 0117
 (C) First Final Flow 189 Safety Joint 75 T-Open 0318
 (D) Initial Shut-In 116 Circ Sub _____ T-Pulled 0753
 (E) Second Initial Flow 210 Hourly Standby 2 1/4 hrs 1.75h T-Out 1202
 (F) Second Final Flow 656 Mileage 62 Comments _____
 (G) Final Shut-In 797 Sampler _____
 (H) Final Hydrostatic 1746 Straddle _____ Ruined Shale Packer _____
 Shale Packer _____ Ruined Packer _____

Initial Open 5 Extra Packer _____ Extra Copies _____
 Initial Shut-In 60 Extra Recorder _____ Sub Total 0
 Final Flow 90 Day Standby _____ Total 1712
 Final Shut-In 120 Accessibility _____ MP/DST Disc't _____
 Sub Total 1712

Approved By _____ Our Representative [Signature]

Trilobite Testing Inc. shall not be liable for damaged of any kind of the property or personnel of the one for whom a test is made, or for any loss suffered or sustained, directly or indirectly, through the use of its equipment, or its statements or opinion concerning the results of any test, tools lost or damaged in the hole shall be paid for at cost by the party for whom the test is made.



TRILOBITE TESTING INC.

1515 Commerce Parkway • Hays, Kansas 67601

Test Ticket

NO. 59408

Well Name & No. Massier B #1-31 Test No. 4 Date 6-27-14
 Company McCoy Petroleum Corp. Elevation 2101 KB 2096 GL
 Address 9342 E Central Wichita KS 67206
 Co. Rep / Geo. Dave Williams Rig Murfin #24
 Location: Sec. 31 Twp. 11 Rge. 19 Co. Ellis State KS

Interval Tested 3722 - 3732 Zone Tested Arb.
 Anchor Length 10 Drill Pipe Run _____ Mud Wt. _____
 Top Packer Depth 3717 Drill Collars Run 88 Vis _____
 Bottom Packer Depth 3722 Wt. Pipe Run _____ WL _____
 Total Depth 3732 Chlorides _____ ppm System LCM _____

Blow Description IF - 1/4 in blow
ISI - No blow
FF - No blow
FSI - No blow

Rec	Feet of	%gas	%oil	%water	%mud
<u>5</u>	<u>Mud</u>				
Rec	Feet of	%gas	%oil	%water	%mud
Rec	Feet of	%gas	%oil	%water	%mud
Rec	Feet of	%gas	%oil	%water	%mud

Rec Total 5 BHT 113 Gravity _____ API RW _____ @ _____ °F Chlorides _____ ppm

(A) Initial Hydrostatic <u>1,866</u>	<input checked="" type="checkbox"/> Test <u>1150</u>	T-On Location <u>18:10</u>
(B) First Initial Flow <u>21</u>	<input checked="" type="checkbox"/> Jars <u>250</u>	T-Started <u>18:35</u>
(C) First Final Flow <u>111</u>	<input checked="" type="checkbox"/> Safety Joint <u>75</u>	T-Open <u>20:35</u>
(D) Initial Shut-In <u>1,153</u>	<input type="checkbox"/> Circ Sub _____	T-Pulled <u>23:40</u>
(E) Second Initial Flow <u>67</u>	<input type="checkbox"/> Hourly Standby _____	T-Out <u>3:10</u>
(F) Second Final Flow <u>248</u>	<input checked="" type="checkbox"/> Mileage <u>62</u>	Comments _____
(G) Final Shut-In <u>275</u>	<input type="checkbox"/> Sampler _____	
(H) Final Hydrostatic <u>1,815</u>	<input type="checkbox"/> Straddle _____	<input type="checkbox"/> Ruined Shale Packer _____

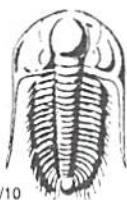
Initial Open 5
 Initial Shut-In 60
 Final Flow 60
 Final Shut-In 60

Sub Total 1537

Sub Total 1537

Approved By _____ Our Representative Burt Dineen

Trilobite Testing Inc. shall not be liable for damaged of any kind of the property or personnel of the one for whom a test is made, or for any loss suffered or sustained, directly or indirectly, through the use of its equipment, or its statements or opinion concerning the results of any test, tools lost or damaged in the hole shall be paid for at cost by the party for whom the test is made.



TRILOBITE TESTING INC.

1515 Commerce Parkway • Hays, Kansas 67601

Test Ticket

NO. 58908

Well Name & No. Massier "B" #1-31 Test No. 5 Date 6-28-14
 Company McCoy Petroleum Corporation Elevation 2101 KB 2096 GL
 Address _____
 Co. Rep / Geo. Dave Williams Rig Murphy #24
 Location: Sec. 31 Twp. 11S Rge. 19W Co. Ellis State KS

Interval Tested 3667 3760 Zone Tested Congl- Arbuckle
 Anchor Length 93 80 Tail Drill Pipe Run 3581 Mud Wt. 9.1
 Top Packer Depth 3662 Drill Collars Run 88 Vis 5.9
 Bottom Packer Depth 3667 Wt. Pipe Run 0 WL 8.0
 Total Depth 3840 Chlorides 3800 ppm System LCM 5#

Blow Description B.O.B. In 2 mins
Weak surface blow back built to 1/2 in
B.O.B. In 3 mins
Dead no blow back

Rec	Feet of	%gas	%oil	%water	%mud
110	60CM	5	25		60
1408	60	30	70		
0	350 GIP	100			
1518	BHT 118	Gravity 36	API RW @	F Chlorides	ppm

(A) Initial Hydrostatic 1909 Test 1150 T-On Location 1740
 (B) First Initial Flow 81 Jars 250 T-Started 1810
 (C) First Final Flow 125 Safety Joint 75 T-Open 2016
 (D) Initial Shut-In 971 Circ Sub Dropped Bar 50 T-Pulled 0051 (6-29-14)
 (E) Second Initial Flow 198 Hourly Standby 2 1/4 hr 1h T-Out 0423
 (F) Second Final Flow 546 Mileage 62 Comments _____
 (G) Final Shut-In 833 Sampler _____
 (H) Final Hydrostatic 1796 Straddle 600 Ruined Shale Packer _____
 Shale Packer _____ Ruined Packer _____
 Extra Packer _____ Extra Copies _____
 Initial Open 5 Extra Recorder _____ Sub Total 0
 Initial Shut-In 60 Day Standby _____ Total 2287
 Final Flow 90 Accessibility _____ MP/DST Disc't _____
 Final Shut-In 120 Sub Total 2287

Approved By _____ Our Representative [Signature]
 Trilobite Testing Inc. shall not be liable for damaged of any kind of the property or personnel of the one for whom a test is made, or for any loss suffered or sustained, directly or indirectly, through the use of its equipment, or its statements or opinion concerning the results of any test, tools lost or damaged in the hole shall be paid for at cost by the party for whom the test is made.