

# ADVANTAGE ELEVATIONS

OIL FIELD SURVEYORS

BOX 8604 - PRATT, KS 67124  
(620) 672-6491

96141

INVOICE NO.

VAL ENERGY INC

OPERATOR

1-9

NO.

BOUCHER OWWO

FARM

Cowley

COUNTY

9

S

32s

T

6e

R

C NE NW SE

LOCATION

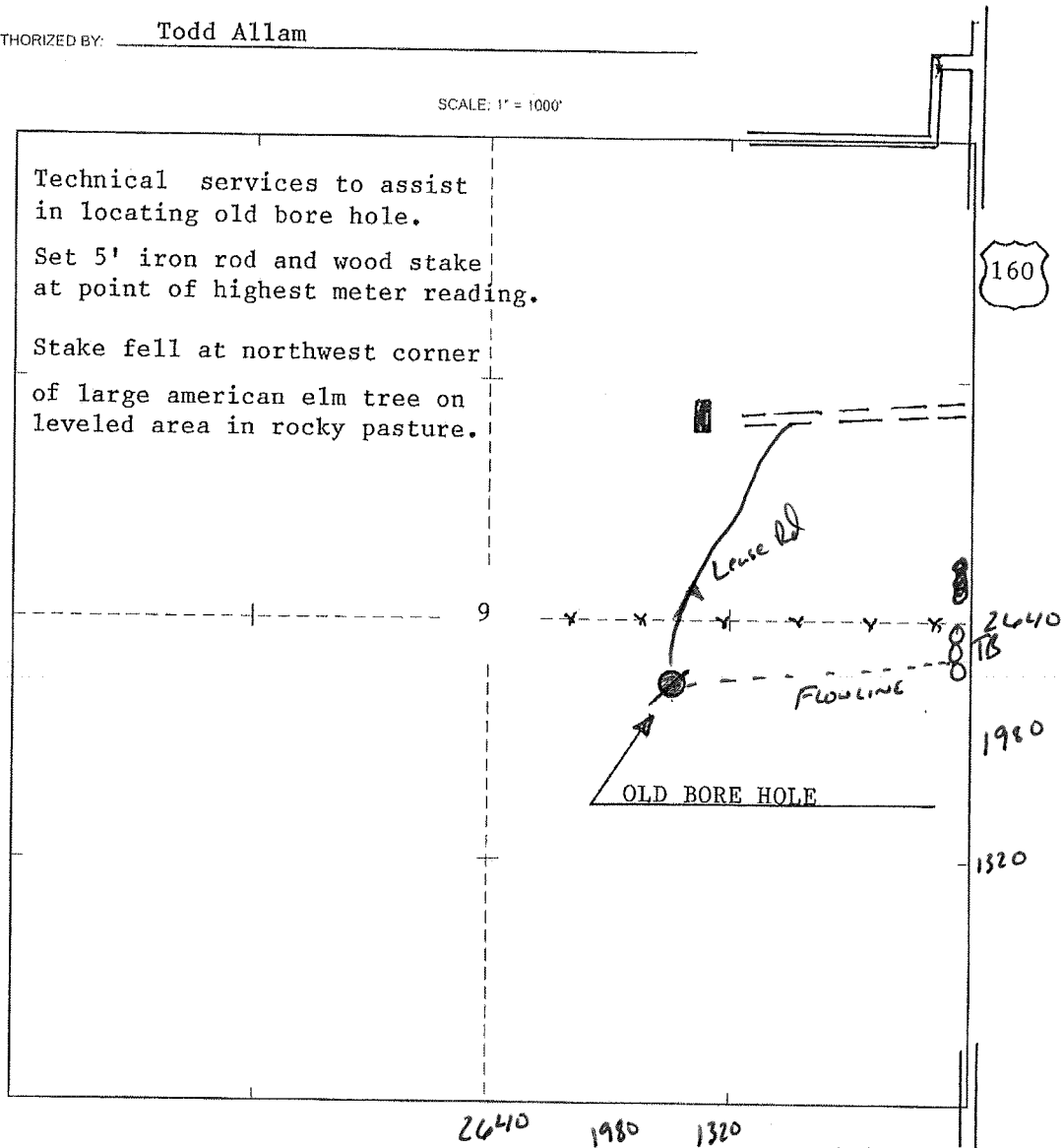
ELEVATION: 1313' GR

VAL ENERGY INC  
125 N Market Ste 1710  
Wichita, KS 67202



AUTHORIZED BY: Todd Allam

SCALE: 1" = 1000'



DATE STAKED: 9/6/14