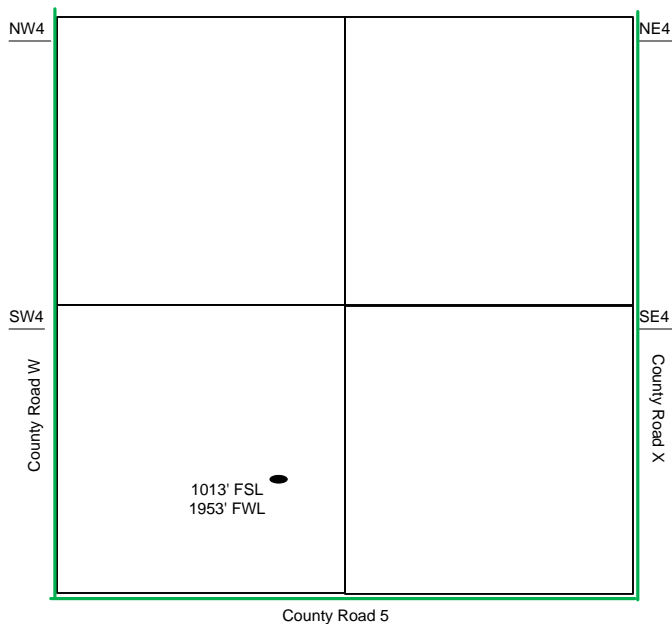
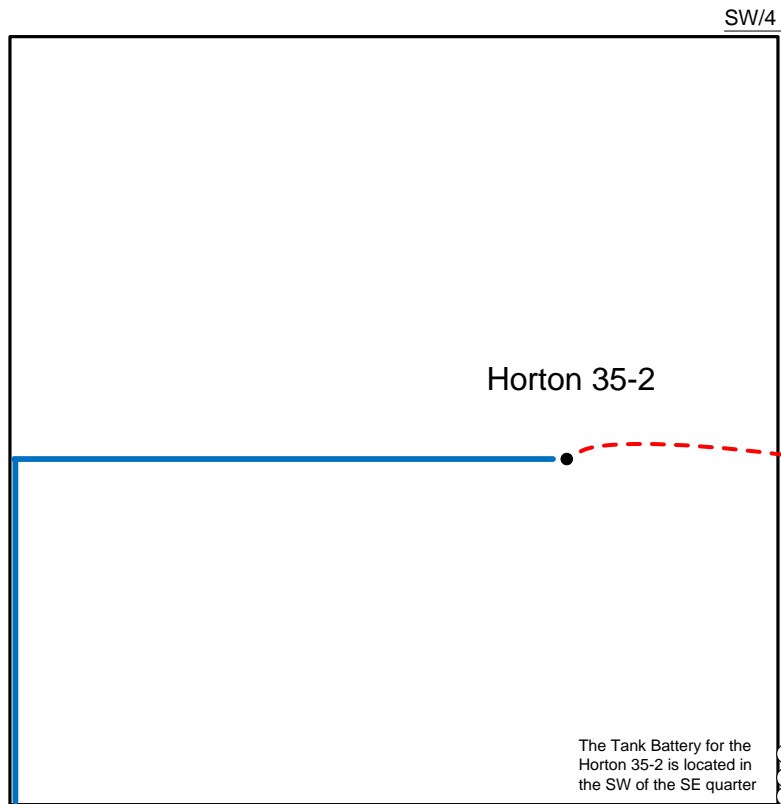


Proposed Plan of Construction

Cobra 26-1  
Sec 26 T21S-R35W  
Kearny County, KS



Sec 35 - T21S - R35W



Proposed Details of  
SW/4 Sec 26 - T21S - R35W

Proposed Site Diagram  
Horton 35-2  
September 9, 2014

Note-Drawing **Not** to Scale