

GEOLOGIST'S REPORT

DRILLING TIME AND SAMPLE LOG

BACH OIL PRODUCTION

WELL: TUBBS #1

LOC.: 2250' FSL & 1920' FEL
 SEC. 3-1-19W
 PHILLIPS COUNTY, KANSAS
 API: 15-147-20738-00-00

DRILLING CONTR.: MURFIN RIG #24
 SPUD: 05-27-14 COMP: 05-31-14
 MUD UP: 2800' TYPE MUD: CHEM.
 DRILL TIME: 2900 to' RTD
 RTD: 3507' LTD: 3505"
 SAMPLES SAVED: 2900'-RTD
 GEOLOGIST: ROBERT J. PETERSEN

ELEVATION

KB: 2025
 GL: 2020
 LOG MEASURED
 FROM: KB

SURFACE CASING

8 5/8" Set @ 220'
 W/175 SX 3% CC 2%gel

PRODUCTION CASING

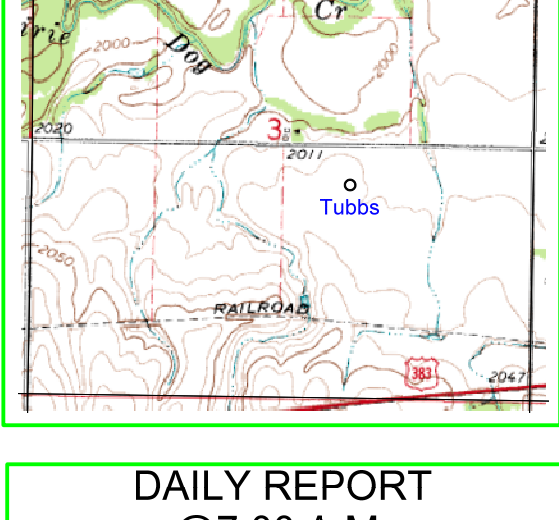
5 1/2" Set

WELL LOG SURVEYS

RAG

ELECTRIC LOG TOPS

FORMATION	DEPTH	DATUM	POS.
Stone Corral	1687	+338	+11
Base Stone Corral	1708	+317	-8
Topeka	3045	-1020	-19
Heebner	3245	-1220	-17
Toronto	3275	-1250	-9
Lansing	3292	-1267	-19
Muncie	3403	-1378	-20
Stark	3469	-1444	-19
LTD	3504	-1479	-



REFERENCE WELL:

Bach Oil Production
 Johnny #1
 3965' FSL & 2005' FEL
 2-1-19W

DAILY REPORT

@7:00 A.M.

05-27-14 MIRU/SPUD

05-28-14 445'

05-29-14 2626'

05-30-14 3355'

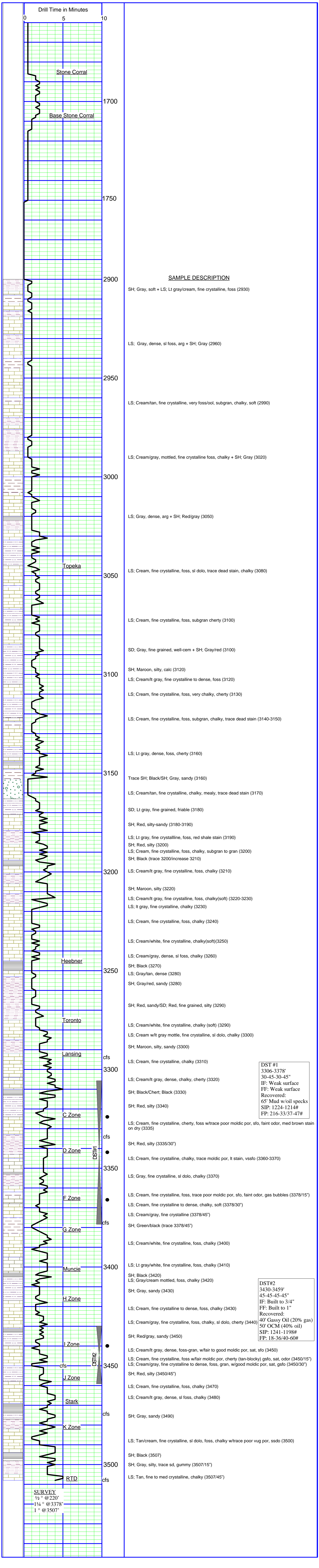
05-31-14 3507"

REMARKS AND RECOMMENDATIONS

Production casing was run to further test this well for commercial production.

Respectfully submitted,

Robert J. Petersen
 Robert J. Petersen



DST #1
 3306-3378'
 30-45-30-45"
 IF: Weak surface
 FF: Weak surface
 Recovered:
 65' Mud w/oil specks
 SIP: 1224-1214#
 FP: 18-36/37-47#

DST #2
 3430-3459'
 45-45-45-45"
 IF: Built to 3/4"
 FF: Built to 1"
 Recovered:
 40' Gassy Oil (20% gas)
 50' OCM (40% oil)
 SIP: 1241-1198#
 FP: 18-36/40-60#

SURVEY
 1/2" @ 220'
 1 1/4" @ 3378'
 1" @ 3507'