



## DRILL STEM TEST REPORT

Prepared For: **Bach Oil**

PO Box 723  
Alma NE 68920

ATTN: Bob Peterson

### **Tubbs #1**

### **3-1s-19w Phillips,KS**

Start Date: 2014.05.30 @ 11:12:00

End Date: 2014.05.30 @ 17:06:30

Job Ticket #: 58187                      DST #: 1

Trilobite Testing, Inc  
PO Box 362 Hays, KS 67601  
ph: 785-625-4778 fax: 785-625-5620

Printed: 2014.06.09 @ 10:53:25

Bach Oil  
3-1s-19w Phillips,KS  
Tubbs #1  
DST # 1  
LKC-C-F  
2014.05.30



**TRILOBITE  
TESTING, INC**

# DRILL STEM TEST REPORT

Bach Oil  
PO Box 723  
Alma NE 68920  
ATTN: Bob Peterson

**3-1s-19w Phillips,KS**  
**Tubbs #1**  
Job Ticket: 58187      **DST#: 1**  
Test Start: 2014.05.30 @ 11:12:00

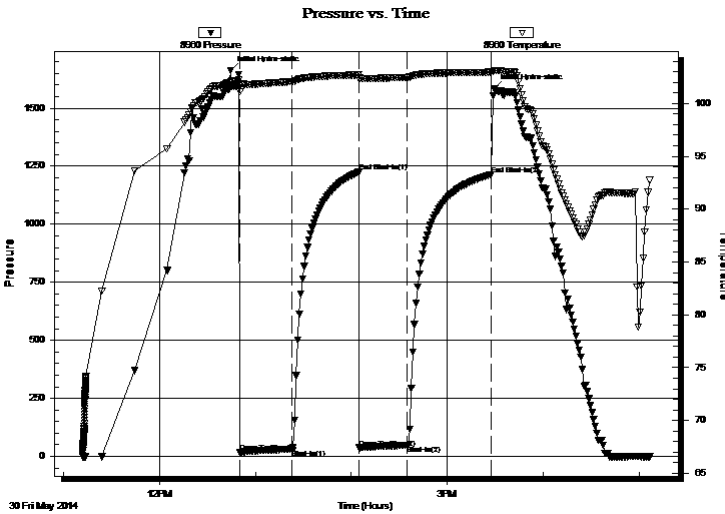
## GENERAL INFORMATION:

Formation: **LKC-C-F**  
Deviated: No Whipstock: ft (KB)  
Time Tool Opened: 12:50:30  
Time Test Ended: 17:06:30  
Interval: **3306.00 ft (KB) To 3378.00 ft (KB) (TVD)**  
Total Depth: 3378.00 ft (KB) (TVD)  
Hole Diameter: 7.88 inches Hole Condition: Good  
Reference Elevations: 2030.00 ft (KB)  
2025.00 ft (CF)  
KB to GR/CF: 5.00 ft  
Test Type: Conventional Bottom Hole (Initial)  
Tester: Chuck Kreuzer Jr.  
Unit No: 61

**Serial #: 8960      Inside**  
Press@RunDepth: 47.49 psig @ 3307.00 ft (KB)      Capacity: 8000.00 psig  
Start Date: 2014.05.30      End Date: 2014.05.30      Last Calib.: 2014.05.30  
Start Time: 11:12:01      End Time: 17:06:30      Time On Btm: 2014.05.30 @ 12:44:30  
Time Off Btm:

TEST COMMENT: IF: Weak surface blow  
IS: No blow back  
FF: Weak surface blow  
FS: No blow back

## PRESSURE SUMMARY



| Time (Min.) | Pressure (psig) | Temp (deg F) | Annotation           |
|-------------|-----------------|--------------|----------------------|
| 0           | 1662.86         | 102.06       | Initial Hydro-static |
| 6           | 16.20           | 101.13       | Open To Flow (1)     |
| 39          | 32.60           | 102.06       | Shut-In(1)           |
| 80          | 1224.42         | 102.71       | End Shut-In(1)       |
| 81          | 37.16           | 102.31       | Open To Flow (2)     |
| 111         | 47.49           | 102.46       | Shut-In(2)           |
| 163         | 1214.02         | 102.96       | End Shut-In(2)       |
| 165         | 1584.20         | 103.08       | Initial Hydro-static |

## Recovery

| Length (ft) | Description         | Volume (bbl) |
|-------------|---------------------|--------------|
| 65.00       | mud w ith oil spots | 0.50         |
|             |                     |              |
|             |                     |              |
|             |                     |              |
|             |                     |              |

## Gas Rates

| Choke (inches) | Pressure (psig) | Gas Rate (Mcf/d) |
|----------------|-----------------|------------------|
|                |                 |                  |





**TRILOBITE  
TESTING, INC**

# DRILL STEM TEST REPORT

**TOOL DIAGRAM**

Bach Oil

**3-1s-19w Phillips,KS**

PO Box 723  
Alma NE 68920

**Tubbs #1**

Job Ticket: 58187

**DST#: 1**

ATTN: Bob Peterson

Test Start: 2014.05.30 @ 11:12:00

## Tool Information

|                           |                    |                       |                                |                        |             |
|---------------------------|--------------------|-----------------------|--------------------------------|------------------------|-------------|
| Drill Pipe:               | Length: 3208.00 ft | Diameter: 3.80 inches | Volume: 45.00 bbl              | Tool Weight:           | 2400.00 lb  |
| Heavy Wt. Pipe:           | Length: 0.00 ft    | Diameter: 0.00 inches | Volume: 0.00 bbl               | Weight set on Packer:  | 25000.00 lb |
| Drill Collar:             | Length: 88.00 ft   | Diameter: 2.80 inches | Volume: 0.67 bbl               | Weight to Pull Loose:  | 45000.00 lb |
|                           |                    |                       | <u>Total Volume: 45.67 bbl</u> | Tool Chased            | 2.00 ft     |
| Drill Pipe Above KB:      | 18.00 ft           |                       |                                | String Weight: Initial | 42000.00 lb |
| Depth to Top Packer:      | 3306.00 ft         |                       |                                | Final                  | 42000.00 lb |
| Depth to Bottom Packer:   | ft                 |                       |                                |                        |             |
| Interval between Packers: | 72.00 ft           |                       |                                |                        |             |
| Tool Length:              | 100.00 ft          |                       |                                |                        |             |
| Number of Packers:        | 2                  | Diameter: 6.75 inches |                                |                        |             |

Tool Comments:

## Tool Description

| Tool Description | Length (ft) | Serial No. | Position | Depth (ft) | Accum. Lengths                |
|------------------|-------------|------------|----------|------------|-------------------------------|
| Shut In Tool     | 5.00        |            |          | 3283.00    |                               |
| Hydraulic tool   | 5.00        |            |          | 3288.00    |                               |
| Jars             | 5.00        |            |          | 3293.00    |                               |
| Safety Joint     | 3.00        |            |          | 3296.00    |                               |
| Packer           | 5.00        |            |          | 3301.00    | 28.00 Bottom Of Top Packer    |
| Packer           | 5.00        |            |          | 3306.00    |                               |
| Stubb            | 1.00        |            |          | 3307.00    |                               |
| Recorder         | 0.00        | 8960       | Inside   | 3307.00    |                               |
| Recorder         | 0.00        | 8673       | Outside  | 3307.00    |                               |
| Perforations     | 4.00        |            |          | 3311.00    |                               |
| change Over Sub  | 1.00        |            |          | 3312.00    |                               |
| Drill Pipe       | 62.00       |            |          | 3374.00    |                               |
| Change Over Sub  | 1.00        |            |          | 3375.00    |                               |
| Bullnose         | 3.00        |            |          | 3378.00    | 72.00 Bottom Packers & Anchor |

**Total Tool Length: 100.00**



**TRILOBITE  
TESTING, INC**

# DRILL STEM TEST REPORT

## FLUID SUMMARY

|                             |                                   |
|-----------------------------|-----------------------------------|
| Bach Oil                    | <b>3-1s-19w Phillips,KS</b>       |
| PO Box 723<br>Alma NE 68920 | <b>Tubbs #1</b>                   |
| ATTN: Bob Peterson          | Job Ticket: 58187 <b>DST#: 1</b>  |
|                             | Test Start: 2014.05.30 @ 11:12:00 |

### Mud and Cushion Information

|                                  |                            |                 |         |
|----------------------------------|----------------------------|-----------------|---------|
| Mud Type: Gel Chem               | Cushion Type:              | Oil API:        | deg API |
| Mud Weight: 9.00 lb/gal          | Cushion Length: ft         | Water Salinity: | ppm     |
| Viscosity: 58.00 sec/qt          | Cushion Volume: bbl        |                 |         |
| Water Loss: 4.79 in <sup>3</sup> | Gas Cushion Type:          |                 |         |
| Resistivity: ohm.m               | Gas Cushion Pressure: psig |                 |         |
| Salinity: 400.00 ppm             |                            |                 |         |
| Filter Cake: 2.00 inches         |                            |                 |         |

### Recovery Information

Recovery Table

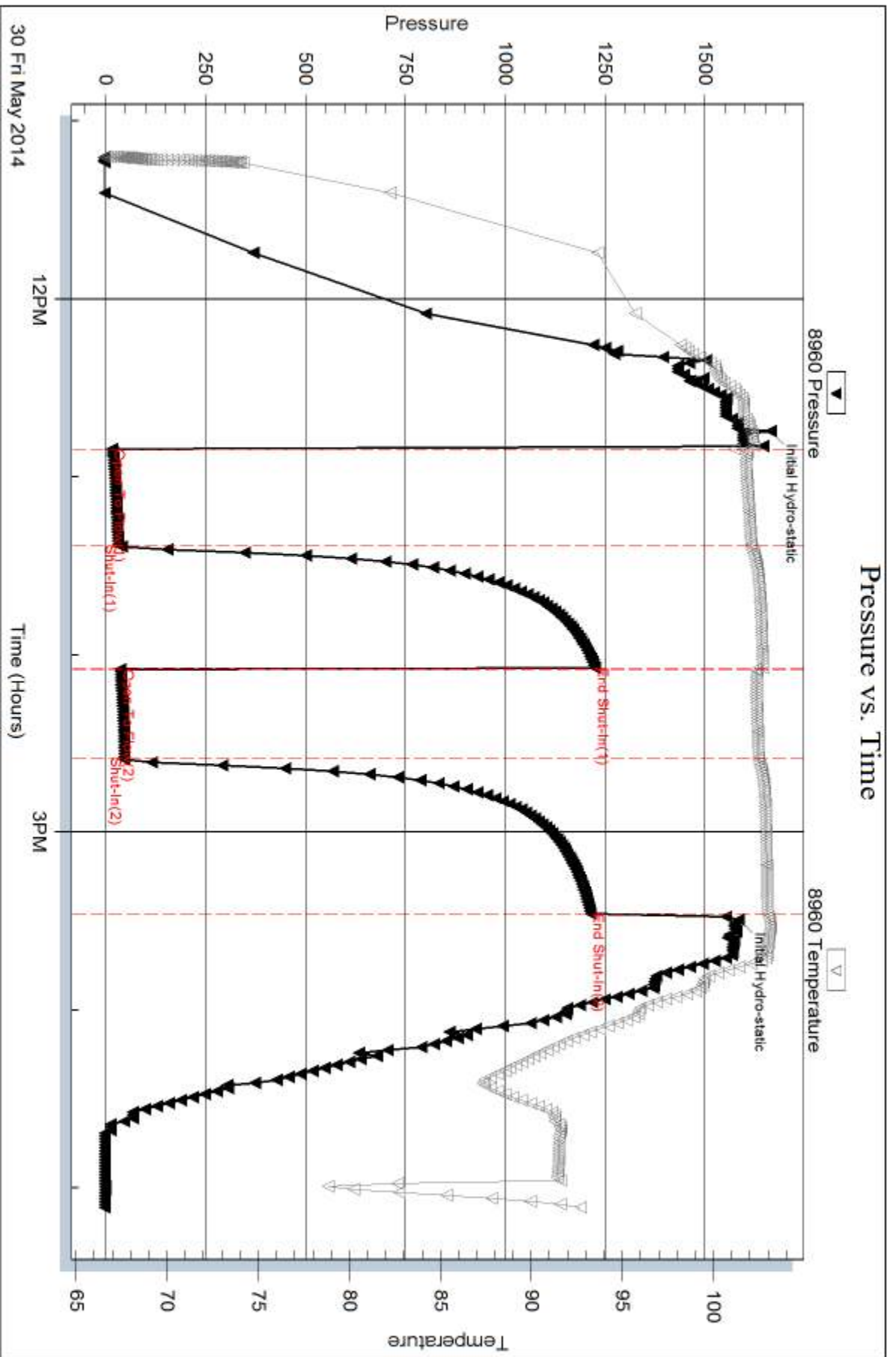
| Length<br>ft | Description         | Volume<br>bbl |
|--------------|---------------------|---------------|
| 65.00        | mud w ith oil spots | 0.495         |

Total Length: 65.00 ft      Total Volume: 0.495 bbl

Num Fluid Samples: 0      Num Gas Bombs: 0      Serial #:

Laboratory Name:      Laboratory Location:

Recovery Comments:

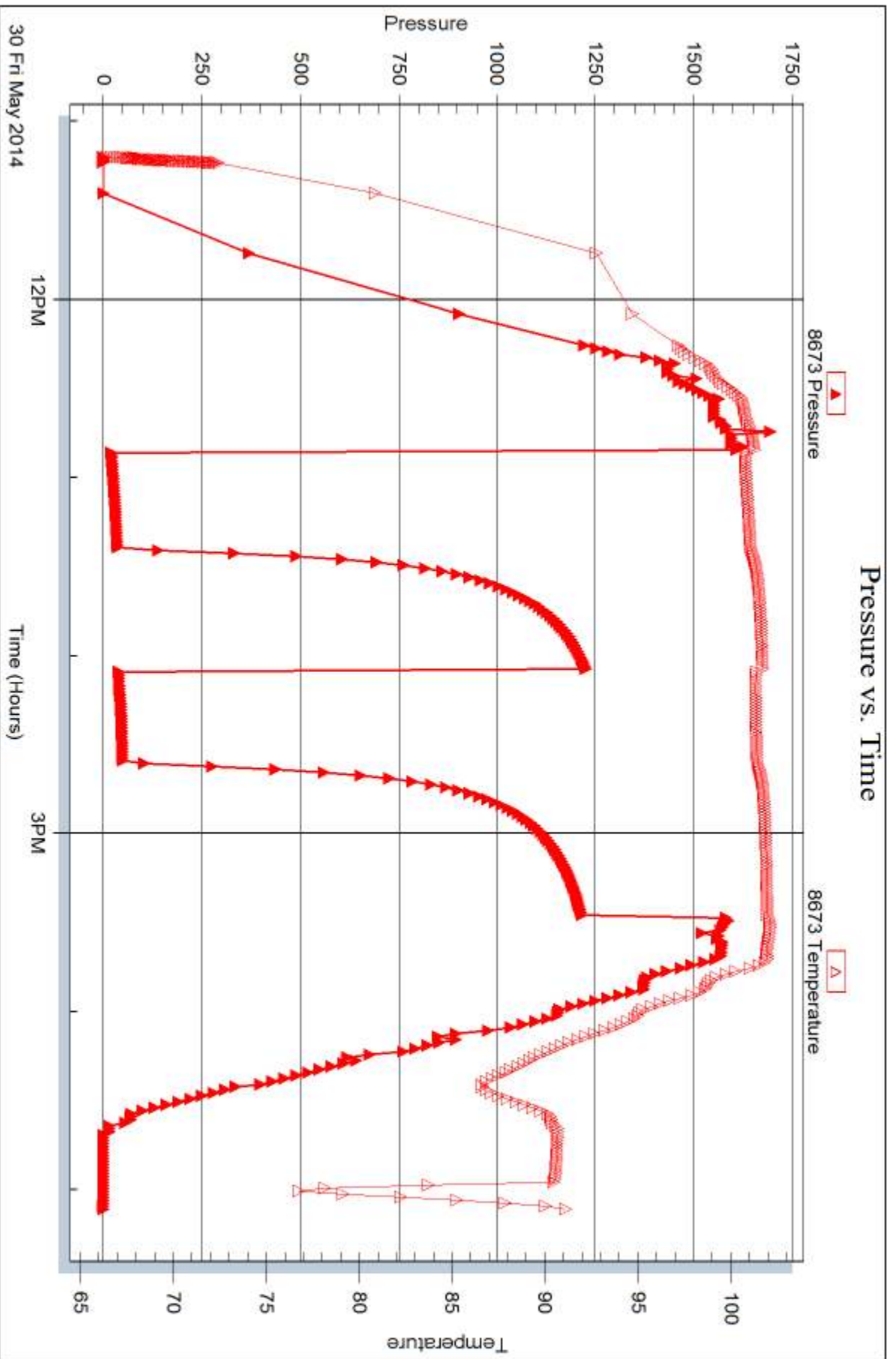


Serial #: 8673

Outside Bach Oil

Tubbs #1

DST Test Number: 1



Tribble Testing, Inc

Ref. No: 58187

Printed: 2014.06.09 @ 10:53:26



## DRILL STEM TEST REPORT

Prepared For: **Bach Oil**

PO Box 723  
Alma NE 68920

ATTN: Bob Peterson

### **Tubbs #1**

### **3-1s-19w Phillips,KS**

Start Date: 2014.05.31 @ 08:36:00

End Date: 2014.05.31 @ 15:33:30

Job Ticket #: 58188                      DST #: 2

Trilobite Testing, Inc  
PO Box 362 Hays, KS 67601  
ph: 785-625-4778 fax: 785-625-5620

Printed: 2014.06.10 @ 08:53:25





**TRILOBITE  
TESTING, INC**

# DRILL STEM TEST REPORT

Bach Oil  
PO Box 723  
Alma NE 68920  
ATTN: Bob Peterson

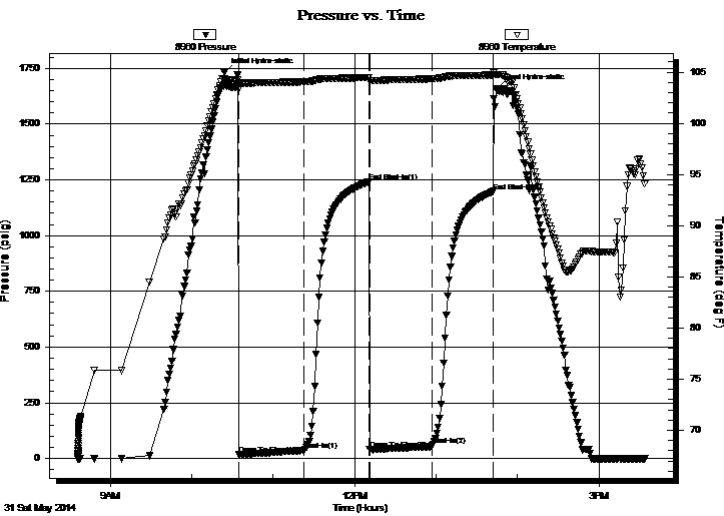
**3-1s-19w Phillips,KS**  
**Tubbs #1**  
Job Ticket: 58188      **DST#: 2**  
Test Start: 2014.05.31 @ 08:36:00

## GENERAL INFORMATION:

Formation: **LKC I**  
Deviated: No Whipstock: ft (KB)      Test Type: Conventional Straddle (Reset)  
Time Tool Opened: 10:34:30      Tester: Chuck Kreuzer Jr.  
Time Test Ended: 15:33:30      Unit No: 61  
**Interval: 3430.00 ft (KB) To 3459.00 ft (KB) (TVD)**      Reference Elevations: 2030.00 ft (KB)  
Total Depth: 3459.00 ft (KB) (TVD)      2025.00 ft (CF)  
Hole Diameter: 7.88 inches Hole Condition: Good      KB to GR/CF: 5.00 ft

**Serial #: 8960      Inside**  
Press@RunDepth: 59.62 psig @ 3431.00 ft (KB)      Capacity: 8000.00 psig  
Start Date: 2014.05.31      End Date: 2014.05.31      Last Calib.: 2014.05.31  
Start Time: 08:36:01      End Time: 15:33:30      Time On Btm: 2014.05.31 @ 10:24:00  
Time Off Btm: 2014.05.31 @ 13:45:00

**TEST COMMENT:** IF: Weak blow , Built to 3/4" over 45 mins.  
IS: No blow back over 45 mins.  
FF: Weak blow , Built to 1" over 45 mins.  
FS: No blow back



## PRESSURE SUMMARY

| Time (Min.) | Pressure (psig) | Temp (deg F) | Annotation           |
|-------------|-----------------|--------------|----------------------|
| 0           | 1731.72         | 104.38       | Initial Hydro-static |
| 11          | 17.59           | 103.27       | Open To Flow (1)     |
| 59          | 36.07           | 104.06       | Shut-In(1)           |
| 107         | 1241.14         | 104.47       | End Shut-In(1)       |
| 107         | 40.27           | 104.12       | Open To Flow (2)     |
| 153         | 59.62           | 104.35       | Shut-In(2)           |
| 198         | 1198.44         | 104.71       | End Shut-In(2)       |
| 201         | 1659.34         | 104.75       | Final Hydro-static   |

## Recovery

| Length (ft) | Description  | Volume (bbl) |
|-------------|--------------|--------------|
| 50.00       | ocm-40%o60%m | 0.38         |
| 40.00       | go           | 0.32         |
|             |              |              |
|             |              |              |
|             |              |              |

\* Recovery from multiple tests

## Gas Rates

|  | Choke (inches) | Pressure (psig) | Gas Rate (Mcf/d) |
|--|----------------|-----------------|------------------|
|  |                |                 |                  |





**TRILOBITE  
TESTING, INC**

# DRILL STEM TEST REPORT

Bach Oil  
PO Box 723  
Alma NE 68920

ATTN: Bob Peterson

**3-1s-19w Phillips,KS**

**Tubbs #1**

Job Ticket: 58188

**DST#: 2**

Test Start: 2014.05.31 @ 08:36:00

## GENERAL INFORMATION:

Formation: **LKC I**

Deviated: No Whipstock: ft (KB)

Time Tool Opened: 10:34:30

Time Test Ended: 15:33:30

Test Type: Conventional Straddle (Reset)

Tester: Chuck Kreuzer Jr.

Unit No: 61

**Interval: 3430.00 ft (KB) To 3459.00 ft (KB) (TVD)**

Reference Elevations: 2030.00 ft (KB)

Total Depth: 3459.00 ft (KB) (TVD)

2025.00 ft (CF)

Hole Diameter: 7.88 inches Hole Condition: Good

KB to GR/CF: 5.00 ft

**Serial #: 8651 Below (Straddle)**

Press@RunDepth: psig @ 3460.00 ft (KB)

Capacity: 8000.00 psig

Start Date: 2014.05.31

End Date:

2014.05.31

Last Calib.:

1899.12.30

Start Time:

08:37:39

End Time:

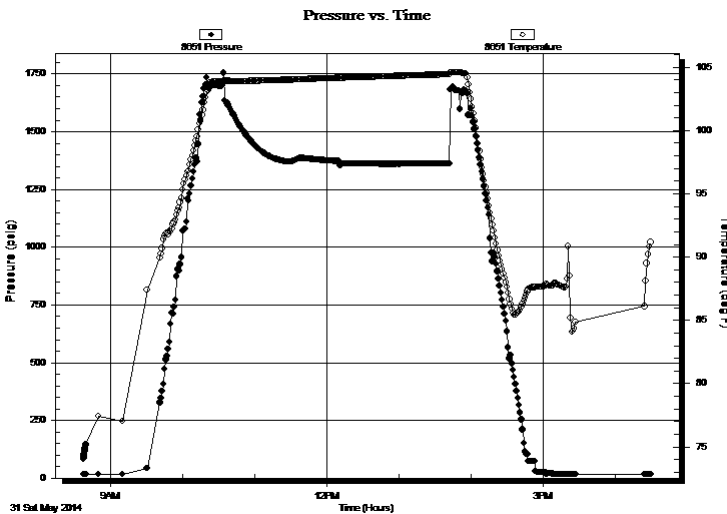
16:30:08

Time On Btm:

Time Off Btm:

**TEST COMMENT:** IF: Weak blow , Built to 3/4" over 45 mins.  
IS: No blow back over 45 mins.  
FF: Weak blow , Built to 1" over 45 mins.  
FS: No blow back

## PRESSURE SUMMARY



| Time (Min.) | Pressure (psig) | Temp (deg F) | Annotation |
|-------------|-----------------|--------------|------------|
|             |                 |              |            |
|             |                 |              |            |
|             |                 |              |            |
|             |                 |              |            |
|             |                 |              |            |
|             |                 |              |            |
|             |                 |              |            |
|             |                 |              |            |
|             |                 |              |            |
|             |                 |              |            |

## Recovery

| Length (ft) | Description  | Volume (bbl) |
|-------------|--------------|--------------|
| 50.00       | ocm-40%o60%m | 0.38         |
| 40.00       | go           | 0.32         |
|             |              |              |
|             |              |              |
|             |              |              |
|             |              |              |

\* Recovery from multiple tests

## Gas Rates

| Choke (inches) | Pressure (psig) | Gas Rate (Mcf/d) |
|----------------|-----------------|------------------|
|                |                 |                  |
|                |                 |                  |
|                |                 |                  |
|                |                 |                  |
|                |                 |                  |



**TRILOBITE  
TESTING, INC**

# DRILL STEM TEST REPORT

**TOOL DIAGRAM**

Bach Oil  
PO Box 723  
Alma NE 68920  
ATTN: Bob Peterson

**3-1s-19w Phillips,KS**  
**Tubbs #1**  
Job Ticket: 58188      **DST#: 2**  
Test Start: 2014.05.31 @ 08:36:00

**Tool Information**

|                           |                    |                       |                                |                                    |
|---------------------------|--------------------|-----------------------|--------------------------------|------------------------------------|
| Drill Pipe:               | Length: 3332.00 ft | Diameter: 3.80 inches | Volume: 46.74 bbl              | Tool Weight: 2400.00 lb            |
| Heavy Wt. Pipe:           | Length: 0.00 ft    | Diameter: 0.00 inches | Volume: 0.00 bbl               | Weight set on Packer: 25000.00 lb  |
| Drill Collar:             | Length: 88.00 ft   | Diameter: 2.80 inches | Volume: 0.67 bbl               | Weight to Pull Loose: 45000.00 lb  |
|                           |                    |                       | <u>Total Volume: 47.41 bbl</u> | Tool Chased 2.00 ft                |
| Drill Pipe Above KB:      | 20.00 ft           |                       |                                | String Weight: Initial 42000.00 lb |
| Depth to Top Packer:      | 3430.00 ft         |                       |                                | Final 43000.00 lb                  |
| Depth to Bottom Packer:   | 3459.00 ft         |                       |                                |                                    |
| Interval between Packers: | 29.00 ft           |                       |                                |                                    |
| Tool Length:              | 106.00 ft          |                       |                                |                                    |
| Number of Packers:        | 2                  | Diameter: 6.75 inches |                                |                                    |

Tool Comments:

| <b>Tool Description</b> | <b>Length (ft)</b> | <b>Serial No.</b> | <b>Position</b> | <b>Depth (ft)</b> | <b>Accum. Lengths</b> |
|-------------------------|--------------------|-------------------|-----------------|-------------------|-----------------------|
|-------------------------|--------------------|-------------------|-----------------|-------------------|-----------------------|

|                 |       |      |         |         |                               |
|-----------------|-------|------|---------|---------|-------------------------------|
| Shut In Tool    | 5.00  |      |         | 3405.00 |                               |
| Sampler         | 2.00  |      |         | 3407.00 |                               |
| Hydraulic tool  | 5.00  |      |         | 3412.00 |                               |
| Jars            | 5.00  |      |         | 3417.00 |                               |
| Safety Joint    | 3.00  |      |         | 3420.00 |                               |
| Packer          | 5.00  |      |         | 3425.00 | 30.00 Bottom Of Top Packer    |
| Packer          | 5.00  |      |         | 3430.00 |                               |
| Stubb           | 1.00  |      |         | 3431.00 |                               |
| Recorder        | 0.00  | 8960 | Inside  | 3431.00 |                               |
| Recorder        | 0.00  | 8673 | Outside | 3431.00 |                               |
| Perforations    | 23.00 |      |         | 3454.00 |                               |
| Blank Off Sub   | 1.00  |      |         | 3455.00 |                               |
| Blank Spacing   | 4.00  |      |         | 3459.00 | 29.00 Tool Interval           |
| Packer          | 1.00  |      |         | 3460.00 |                               |
| Packer - Shale  | 0.00  |      |         | 3460.00 |                               |
| Recorder        | 0.00  | 8651 | Below   | 3460.00 |                               |
| Change Over Sub | 1.00  |      |         | 3461.00 |                               |
| Perforations    | 9.00  |      |         | 3470.00 |                               |
| Change Over Sub | 1.00  |      |         | 3471.00 |                               |
| Blank Spacing   | 31.00 |      |         | 3502.00 |                               |
| Change Over Sub | 1.00  |      |         | 3503.00 |                               |
| Bullnose        | 3.00  |      |         | 3506.00 | 47.00 Bottom Packers & Anchor |

**Total Tool Length: 106.00**



**TRILOBITE  
TESTING, INC**

# DRILL STEM TEST REPORT

## FLUID SUMMARY

Bach Oil **3-1s-19w Phillips,KS**  
 PO Box 723 **Tubbs #1**  
 Alma NE 68920 Job Ticket: 58188 **DST#: 2**  
 ATTN: Bob Peterson Test Start: 2014.05.31 @ 08:36:00

### Mud and Cushion Information

|                                  |                            |                 |         |
|----------------------------------|----------------------------|-----------------|---------|
| Mud Type: Gel Chem               | Cushion Type:              | Oil API:        | deg API |
| Mud Weight: 9.00 lb/gal          | Cushion Length: ft         | Water Salinity: | ppm     |
| Viscosity: 58.00 sec/qt          | Cushion Volume: bbl        |                 |         |
| Water Loss: 4.79 in <sup>3</sup> | Gas Cushion Type:          |                 |         |
| Resistivity: ohm.m               | Gas Cushion Pressure: psig |                 |         |
| Salinity: 400.00 ppm             |                            |                 |         |
| Filter Cake: 2.00 inches         |                            |                 |         |

### Recovery Information

Recovery Table

| Length<br>ft | Description  | Volume<br>bbl |
|--------------|--------------|---------------|
| 50.00        | ocm-40%o60%m | 0.381         |
| 40.00        | go           | 0.317         |

Total Length: 90.00 ft Total Volume: 0.698 bbl  
 Num Fluid Samples: 0 Num Gas Bombs: 0 Serial #:  
 Laboratory Name: Laboratory Location:  
 Recovery Comments:

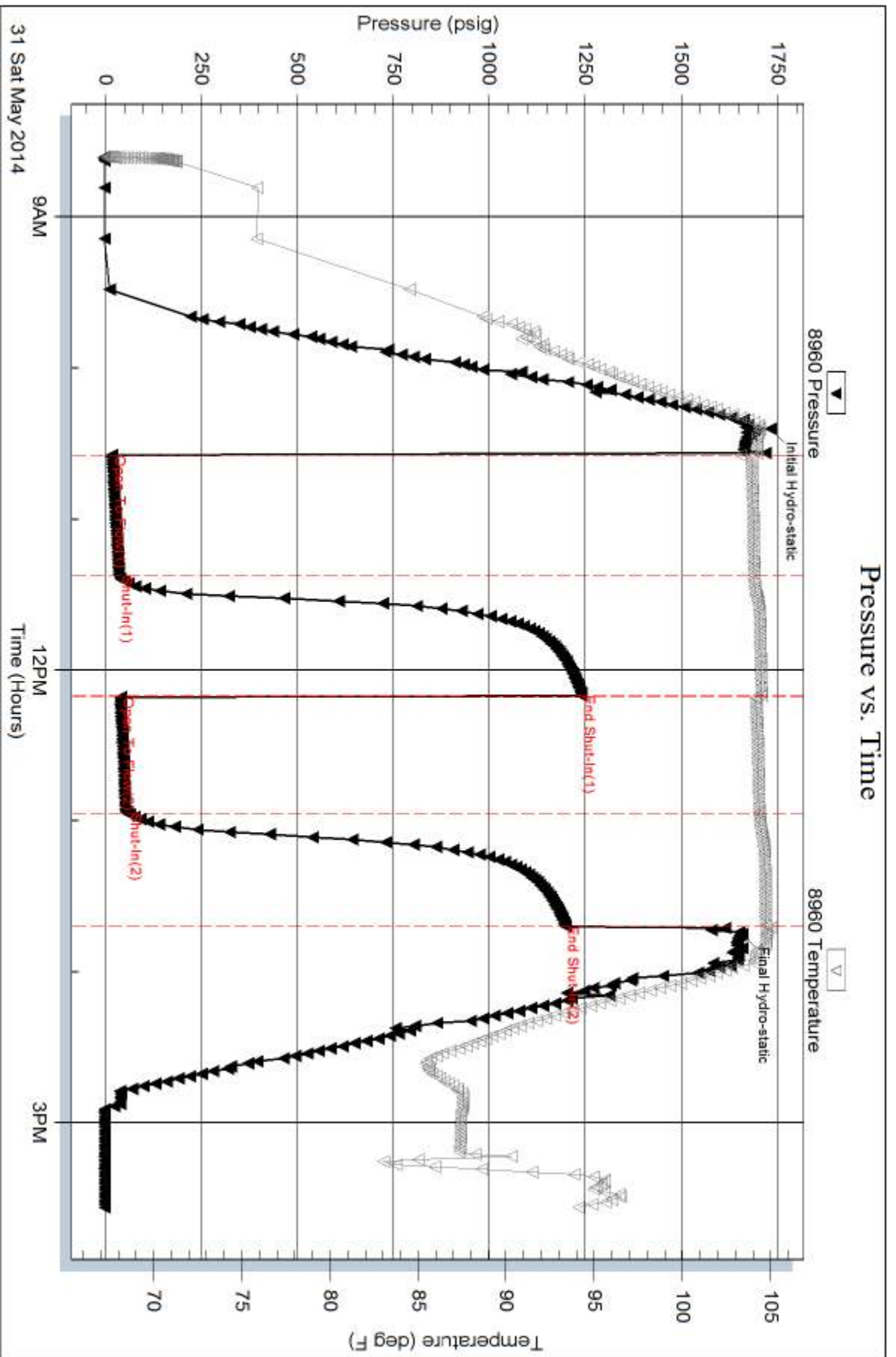
Serial #: 8960

Inside

Bach Oil

Tubbs #1

DST Test Number: 2



Trilobite Testing, Inc

Ref. No: 58188

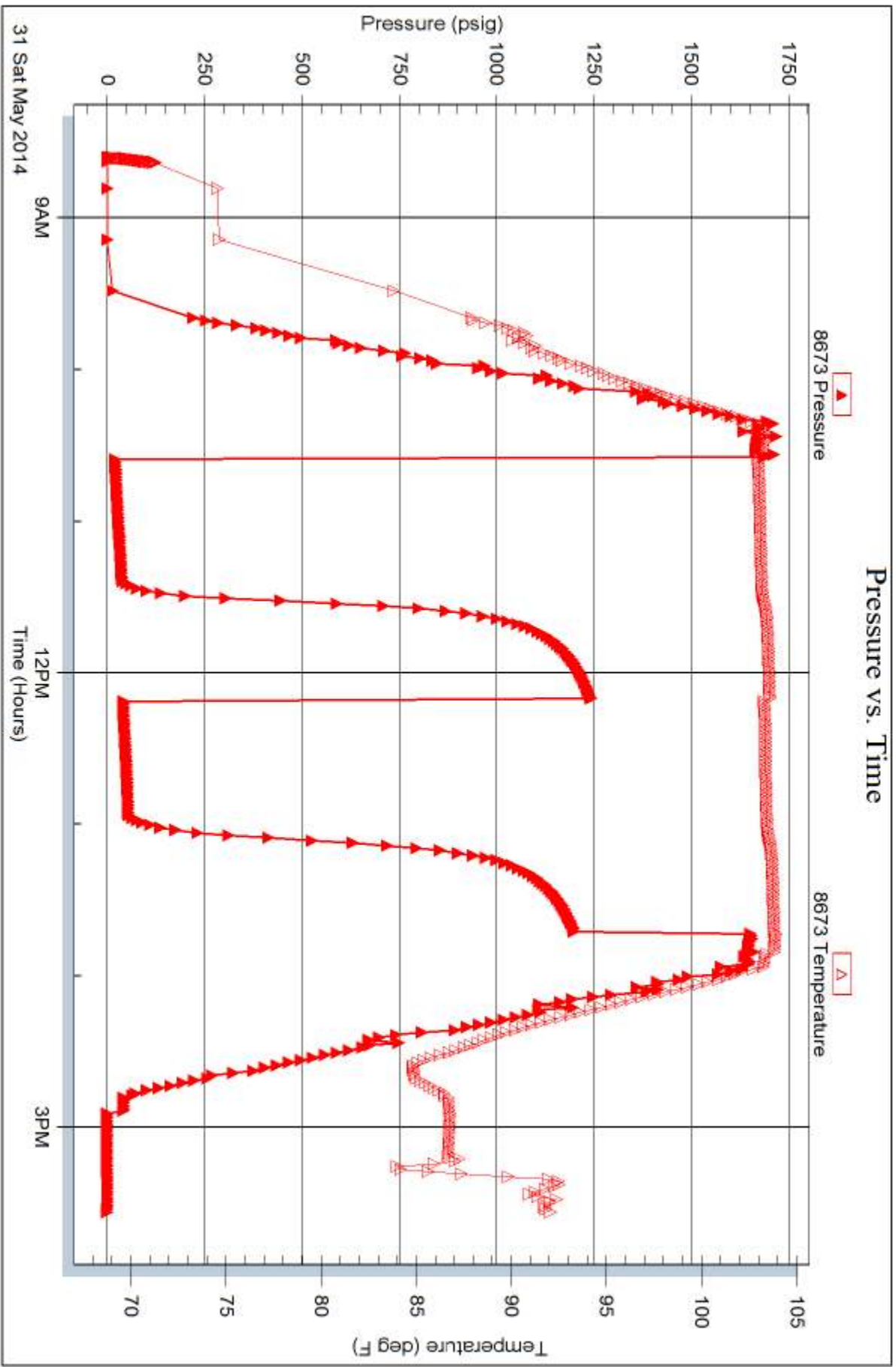
Printed: 2014.06.10 @ 08:53:27

Serial #: 8673

Outside Bach Oil

Tubbs #1

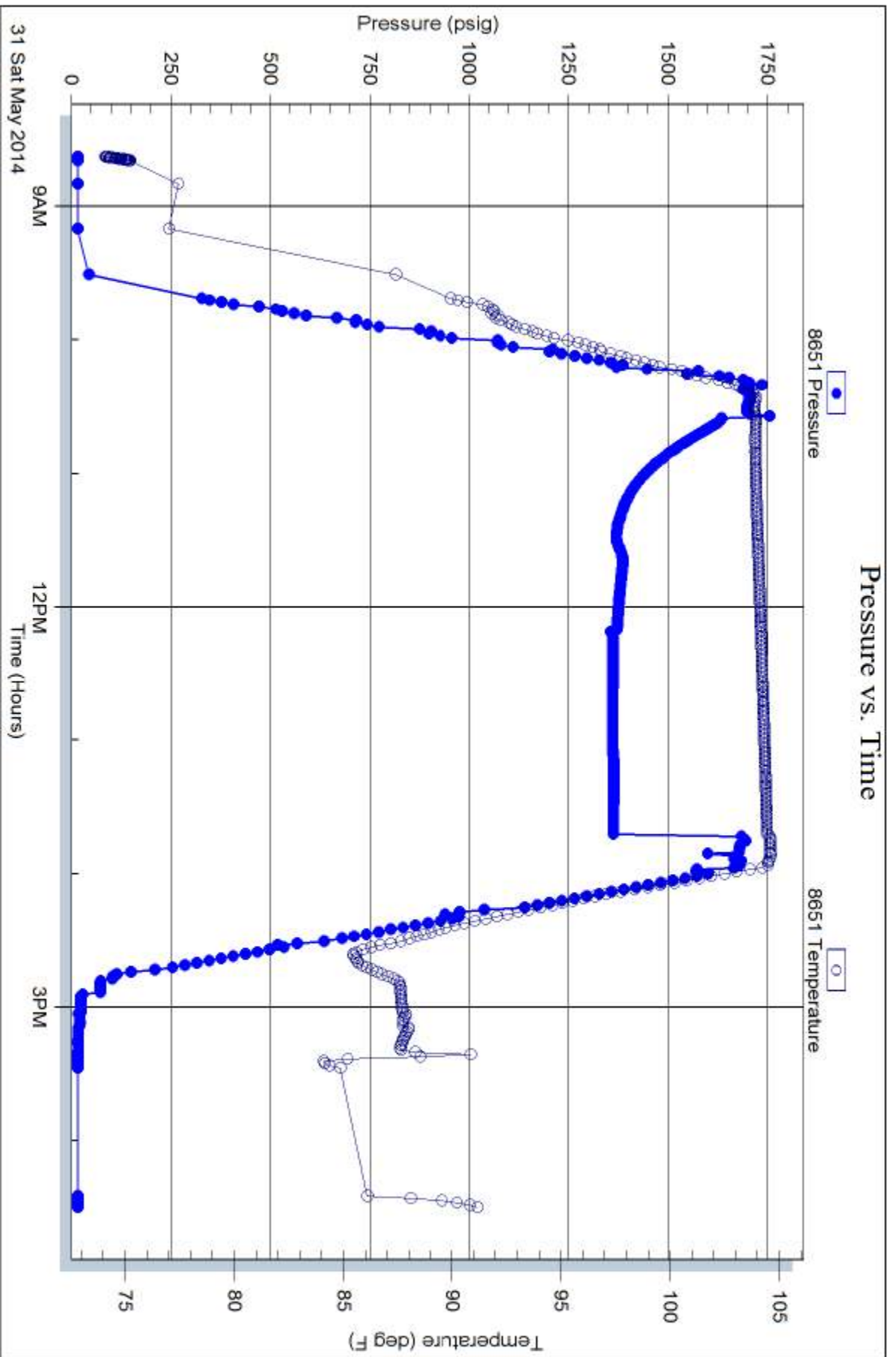
DST Test Number: 2



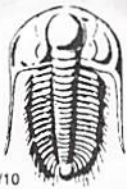
Trilobite Testing, Inc

Ref. No: 58188

Printed: 2014.06.10 @ 08:53:27







# TRILOBITE TESTING INC.

1515 Commerce Parkway • Hays, Kansas 67601

## Test Ticket

NO. 58187

Well Name & No. Tubbs # 1 Test No. 1 Date 5-30-2014  
 Company Bach Elevation 2030 KB 2025 GL  
 Address P.O. Box 723 Alma Ne. 68900  
 Co. Rep / Geo. Bob Peterson Rig Murfin #24  
 Location: Sec. 3 Twp. 1s Rge. 19w Co. Phillips State Ks

Interval Tested 3306 3378 Zone Tested LKL-C-F  
 Anchor Length 72 Drill Pipe Run \_\_\_\_\_ Mud Wt. 9.2  
 Top Packer Depth 3301 Drill Collars Run 98 Vis 58  
 Bottom Packer Depth 3306 Wt. Pipe Run -0- WL 4.8  
 Total Depth 3378 Chlorides 406 ppm System LCM 1#

Blow Description IF: Weak surface  
FSE: No blow back  
FF: Weak surface  
FSE: No blow back

| Rec       | Feet of                   | %gas | %oil | %water | %mud |
|-----------|---------------------------|------|------|--------|------|
| <u>65</u> | <u>mud with oil specs</u> |      |      |        |      |
| _____     | _____                     |      |      |        |      |
| _____     | _____                     |      |      |        |      |
| _____     | _____                     |      |      |        |      |
| _____     | _____                     |      |      |        |      |

Rec Total 65 BHT 100 Gravity \_\_\_\_\_ API RW \_\_\_\_\_ @ \_\_\_\_\_ °F Chlorides \_\_\_\_\_ ppm

|                                     |   |  |
|-------------------------------------|---|--|
| (A) Initial Hydrostatic <u>1663</u> | <input checked="" type="checkbox"/> Test 1150                                 | T-On Location <u>10:30</u>                         |
| (B) First Initial Flow <u>16</u>    | <input checked="" type="checkbox"/> Jars 250                                  | T-Started <u>11:12</u>                             |
| (C) First Final Flow <u>33</u>      | <input checked="" type="checkbox"/> Safety Joint 75                           | T-Open <u>12:50</u>                                |
| (D) Initial Shut-In <u>1224</u>     | <input type="checkbox"/> Circ Sub _____                                       | T-Pulled <u>15:20</u>                              |
| (E) Second Initial Flow <u>37</u>   | <input type="checkbox"/> Hourly Standby _____                                 | T-Out <u>17:06</u>                                 |
| (F) Second Final Flow <u>47</u>     | <input checked="" type="checkbox"/> Mileage <u>59x2 = 116 x 1.55 = 179.80</u> | Comments _____                                     |
| (G) Final Shut-In <u>1214</u>       | <input type="checkbox"/> Sampler _____  |  |
| (H) Final Hydrostatic <u>1584</u>   | <input type="checkbox"/> Straddle _____                                       | <input type="checkbox"/> Ruined Shale Packer _____ |
|                                     | <input type="checkbox"/> Shale Packer _____                                   | <input type="checkbox"/> Ruined Packer _____       |
| Initial Open <u>30</u>              | <input type="checkbox"/> Extra Packer _____                                   | <input type="checkbox"/> Extra Copies _____        |
| Initial Shut-In <u>45</u>           | <input type="checkbox"/> Extra Recorder _____                                 | Sub Total <u>0</u>                                 |
| Final Flow <u>30</u>                | <input type="checkbox"/> Day Standby _____                                    | Total <u>1654.80</u>                               |
| Final Shut-In <u>45</u>             | <input type="checkbox"/> Accessibility _____                                  | MP/DST Disc't _____                                |
|                                     | Sub Total <u>1654.80</u>  |  |

Approved By \_\_\_\_\_ Our Representative [Signature]

Trilobite Testing Inc. shall not be liable for damaged of any kind of the property or personnel of the one for whom a test is made, or for any loss suffered or sustained, directly or indirectly, through the use of its equipment, or its statements or opinion concerning the results of any test, tools lost or damaged in the hole shall be paid for at cost by the party for whom the test is made.



# TRILOBITE TESTING INC.

1515 Commerce Parkway • Hays, Kansas 67601

## Test Ticket

NO. **58188**

4/10

Well Name & No. Tubbs #1 Test No. 2 Date 5-31-2014  
 Company Bash Elevation 2030 KB 2025 GL  
 Address PO Box 723 Alma Ne. 68020  
 Co. Rep / Geo. Bob Peterson Rig Murfit #24  
 Location: Sec. 3 Twp. 1S Rge. 19W Co. Ph: 16ps State Ks.

Interval Tested 3430 3459 Zone Tested LKC - I  
 Anchor Length 29 Drill Pipe Run 3332 Mud Wt. 9.2  
 Top Packer Depth 3425 Drill Collars Run 88 Vis 58  
 Bottom Packer Depth 3459 ~~3430~~ ~~3425~~ Wt. Pipe Run - 0 - WL 4.8  
 Total Depth 3505 ~~3430~~ Chlorides 400 ppm System LCM 1#

Blow Description IF: Weak blow, Built to 3/4 in. over 45 mins.  
ISI: No blow back  
FF: Weak blow, Built to 1 in. over 45 mins.  
FSI: No blow Back

| Rec       | Feet of    | %gas      | %oil      | %water | %mud      |
|-----------|------------|-----------|-----------|--------|-----------|
| <u>40</u> | <u>90</u>  | <u>20</u> | <u>80</u> |        |           |
| <u>50</u> | <u>OCM</u> |           | <u>40</u> |        | <u>60</u> |
|           |            |           |           |        |           |
|           |            |           |           |        |           |
|           |            |           |           |        |           |

Rec Total 90 BHT 104 Gravity 19 API RW \_\_\_\_\_ @ \_\_\_\_\_ ° F Chlorides \_\_\_\_\_ ppm

|                                     |   |  |
|-------------------------------------|---|--|
| (A) Initial Hydrostatic <u>1732</u> | <input checked="" type="checkbox"/> Test <u>1150</u>                        | T-On Location <u>8:00</u>                          |
| (B) First Initial Flow <u>18</u>    | <input checked="" type="checkbox"/> Jars <u>250</u>                         | T-Started <u>8:36</u>                              |
| (C) First Final Flow <u>36</u>      | <input checked="" type="checkbox"/> Safety Joint <u>75</u>                  | T-Open <u>10:34</u>                                |
| (D) Initial Shut-In <u>1241</u>     | <input type="checkbox"/> Circ Sub _____                                     | T-Pulled <u>13:30</u>                              |
| (E) Second Initial Flow <u>40</u>   | <input type="checkbox"/> Hourly Standby _____                               | T-Out <u>15:33</u>                                 |
| (F) Second Final Flow <u>60</u>     | <input checked="" type="checkbox"/> Mileage <u>58x2 = 116x1.55 = 179.80</u> | Comments _____                                     |
| (G) Final Shut-In <u>1198</u>       | <input type="checkbox"/> Sampler _____                                      |  |
| (H) Final Hydrostatic <u>1659</u>   | <input checked="" type="checkbox"/> Straddle <u>600</u>                     | <input type="checkbox"/> Ruined Shale Packer _____ |
|                                     | <input type="checkbox"/> Shale Packer _____                                 | <input type="checkbox"/> Ruined Packer _____       |
| Initial Open <u>45</u>              | <input type="checkbox"/> Extra Packer _____                                 | <input type="checkbox"/> Extra Copies _____        |
| Initial Shut-In <u>45</u>           | <input type="checkbox"/> Extra Recorder _____                               | Sub Total <u>0</u>                                 |
| Final Flow <u>45</u>                | <input type="checkbox"/> Day Standby _____                                  | Total <u>2254.80</u>                               |
| Final Shut-In <u>45</u>             | <input type="checkbox"/> Accessibility _____                                | MP/DST Disc't _____                                |
|                                     | Sub Total <u>2254.80</u>  |  |

Approved By \_\_\_\_\_ Our Representative [Signature]

Trilobite Testing Inc. shall not be liable for damaged of any kind of the property or personnel of the one for whom a test is made, or for any loss suffered or sustained, directly or indirectly, through the use of its equipment, or its statements or opinion concerning the results of any test, tools lost or damaged in the hole shall be paid for at cost by the party for whom the test is made.