

DEPTH

5" 10" 15" 20" 25"

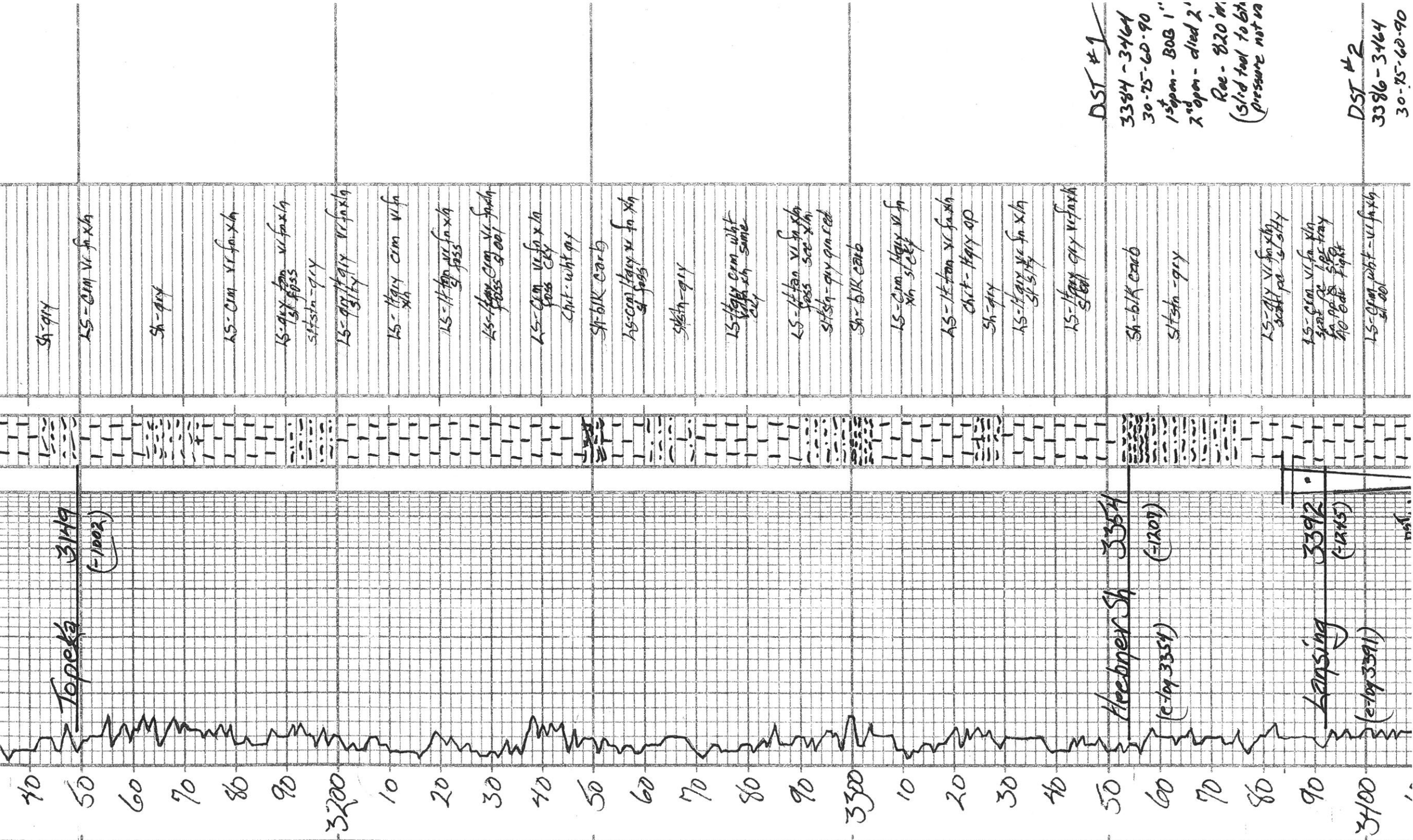
3000 10 20 30 40 50 60 70 80 90 3100 10 20 30 40 50 60

Topoká 3149 (-1002)

15-cm ft tan. v. f. xh
sh-914
15-cm ft tan. v. f. xh
sh-914
15-cm ft tan. v. f. xh
sh-914
15-cm ft tan. v. f. xh
sh-914
15-cm ft tan. v. f. xh
sh-914

SAMPLE DESCRIPTIONS

REMARKS



Sh-gray

LS-Cim vi fo xh

Sh-gray

LS-Cim vi fo xh

LS-gray tan vi fo xh
st sta-gray

LS-gray clay vi fo xh
st sta-gray

LS-Hgray cim vi fo

LS-H tan vi fo xh
st sta-gray

LS-H gray Cim vi fo xh
st sta-gray

LS-Cim vi fo xh
foos clay
Chert-wht gray

Sh-bk carb

LS-Cim gray vi fo xh
st sta-gray

St sta-gray

LS-H gray Cim wht
vi fo xh same
clay

LS-H tan vi fo xh
foos see xh
st sta-gray qm red

Sh-bk carb

LS-Cim Hgray vi fo
xh st sta-gray

LS-H tan vi fo xh
Chert-Hgray op
Sh-gray

LS-H gray vi fo xh
st sta-gray

LS-H gray clay vi fo xh
st sta-gray

Sh-bk carb

St sta-gray

LS-gray vi fo xh
st sta-gray

LS-Cim vi fo xh
st sta-gray
foos clay
No bed light

LS-Cim wht-vi fo xh
st sta-gray

DST #1
 3384-3464
 30-25-60-90
 1st opn - BOB 1"
 2nd opn - died 2'
 Roe - 820 m
 (Slid tool to 6th pressure net in)

DST #2
 3386-3464
 30-25-60-90

3386-3464
 30-75-60-90
 1st opn - 4 3/4"
 2nd opn - 2 3/4"
 Rec: 100
 (oil in)

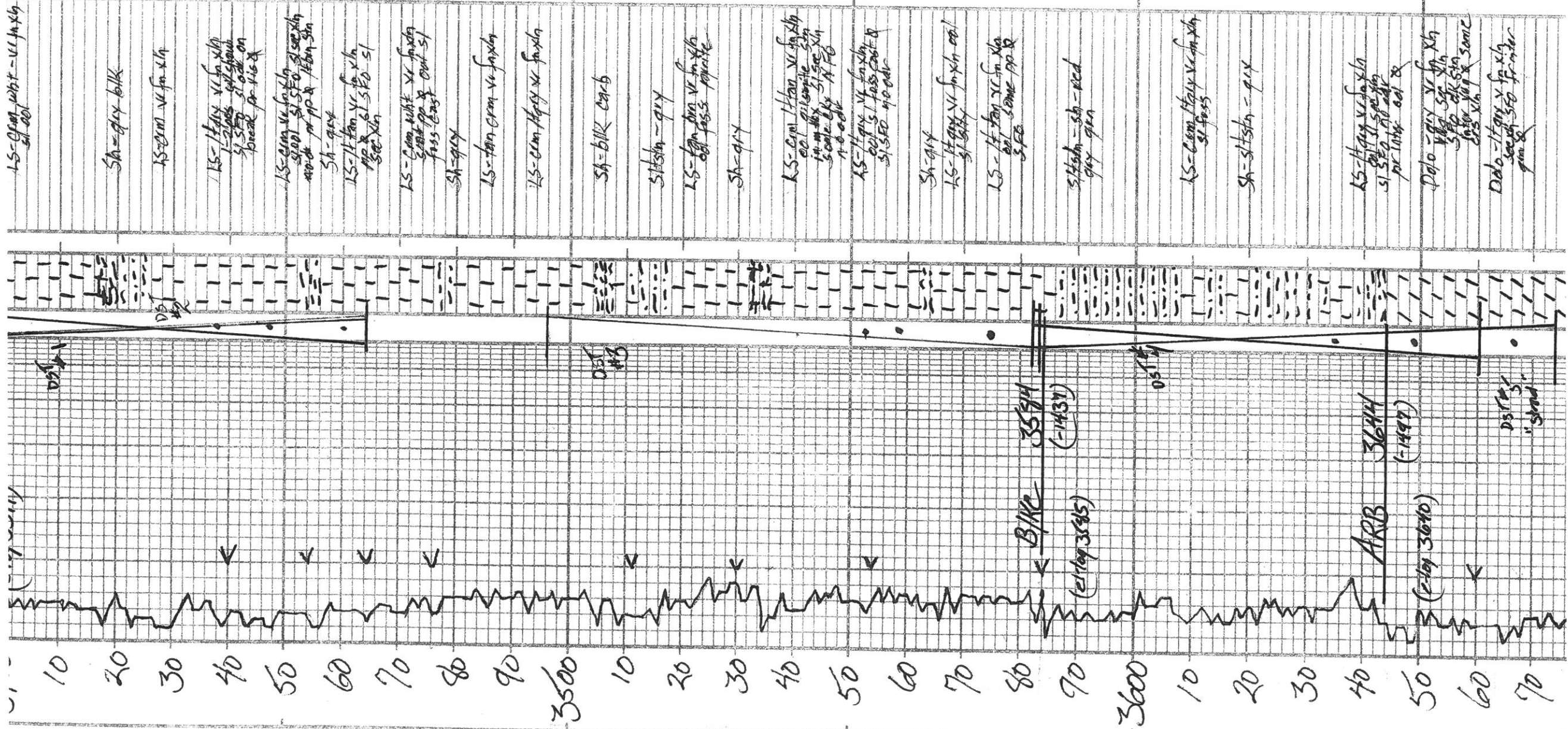
ISIP-661
 FSP-654
 EFD-28-38
 FFP-38-55
 FMP-1601
 FNP-1565

DST #3
 3496-3584
 30-75-60-60
 1st opn - 3 1/4"
 2nd opn - NB
 Rec: 2
 151

ISIP-386
 FSP-79
 IFP-9-14
 FFP-16-20
 IAP-1694
 FNP-1693

DST #4
 3582-3660
 30-75-60-90
 1st opn - 10"
 2nd opn - 10"
 Rec: 60
 120
 1060

ISIP-984
 FSP-963
 IFP-24-55
 FFP-61-87
 IAP-1747
 FNP-1744



Sh-grey blk

LS-cream v. fine xln

LS-1/4 tan v. fine xln
 1-2 days w/ sludge
 sl. 50% sl. 100% on
 break pr. 1/2 x

LS-cream v. fine xln
 sl. 50% sl. 50% sl. 50%
 made pr. 1/2 x / 1/2 tan xln

Sh-grey
 LS-1/4 tan v. fine xln
 pr. 1/2 x sl. 50% sl.

LS-cream white v. fine xln
 great pr. x out sl.
 pass east
 Sh-grey

LS-tan cream v. fine xln

LS-cream grey v. fine xln

Sh-blk carb

Sh-stn-grey

LS-tan cream v. fine xln
 oil pass private

Sh-grey

LS-cream tan v. fine xln
 oil private sl.
 1/2 tan xln 51% xln
 50% blk NFO
 100% oil

LS-1/4 grey v. fine xln
 out sl. pass east x
 sl. 50% 40% oil

Sh-grey

LS-1/4 grey v. fine xln oil

LS-1/4 tan v. fine xln
 oil some pr. x
 50%

Sh-stn-sh-red
 grey green

LS-cream grey v. fine xln
 sl. 50%

Sh-stn-grey

LS-1/4 grey v. fine xln
 sl. 50% sl. 50%
 pr. 1/2 x oil x

Dob-grey v. fine xln
 1/2 tan xln
 50% blk xln
 1/2 tan xln x some
 20% xln

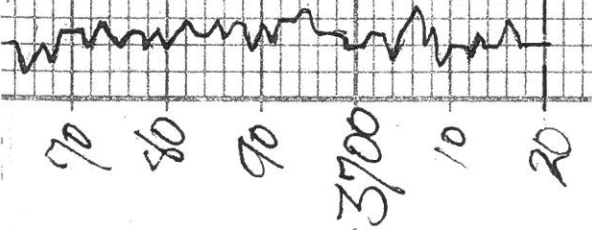
Dob-1/4 grey v. fine xln
 some 50% pr. x
 1/2 x

Dolo - 1 1/2 gal. v. to x 1/2 gal.
see 570 for meter
gen 8

Dolo - 1 1/2 gal. v. to x 1/2 gal.
v. to sat. ga.
w/ 1000 570
570
See 570 for BIK spt
See 570

SS - 1 1/2 gal. v. to x 1/2 gal.
well spt 570
570
NO FE

DST #5
"stand"



RTD 3720
ATD 3723

DST #5
30-90-60-12
1st opn - 8
2nd opn - 9 1/2
Rec: 3
12
51

ISIP-970
FSIP-959
IFP-24-44
MFD-57-81
IAP-1811
FMR-1809

DEPTH		LITHOLOGY	SAMPLE DESCRIPTIONS	REMARKS

COMPANY _____ ELEVATION: _____
 LEASE _____
 LOCATION _____ SEC _____ TWP _____ RNG _____
 COUNTY _____ STATE _____