



Pioneer Energy Services

Sonic Cement
Bond Log

15-035-24579

Company Future Acquisition Company
Well Herradura No.1
Field Wilson
County Cowley
State Kansas

Location 2285' FSL & 1878' FWL

Other Services

Sec: 17 Twp: 33S Rge: 6E

Elevation

Permanent Datum Ground Level Elevation 1318
Log Measured From Kelly Bushing 10 Ft. Above Perm. Datum
Drilling Measured From Kelly Bushing

K.B. 1328
D.F. 1326
G.L. 1318

Run Number	One	
Date Survey	8/14/2014	
Date Cementing	6/24/2014	
Type Cementing Operation	Primary	
Depth Driller	3594	
Depth Logger	3544	
Logged Interval	3544 to 936	
Casing Driller	5.5 @ TD	@
Float Collar -- D.V. Tool	////	////
Squeeze Depth	////	
Amount & Type Cement	////	
Amount & Type Admix	////	
Type Fluid In Hole	Water	
Fluid Level	Full	
Salinity PPM CL	////	
Weight lb/gal -- Vis.	////	////
Approx. Logged Cement Top	1136	
Calculated Cement Top	////	
Max. Hole Temperature	////	
Tool No.	RBT 1-1	
Spacing Recorded	3-5	
Equipment -- Location	106 Pratt	
Recorded By	M. Schwerdtfeger	
Witnessed By	Terry Madden	

<<< Fold Here >>>

All interpretations are opinions based on inferences from electrical or other measurements and we cannot and do not guarantee the accuracy or correctness of any interpretation, and we shall not, except in the case of gross or willful negligence on our part, be liable or responsible for any loss, costs, damages, or expenses incurred or sustained by anyone resulting from any interpretation made by any of our officers, agents or employees. These interpretations are also subject to our general terms and conditions set out in our current Price Schedule.

Comments

Thank you for using Pioneer Energy Services
(620) 672-8300

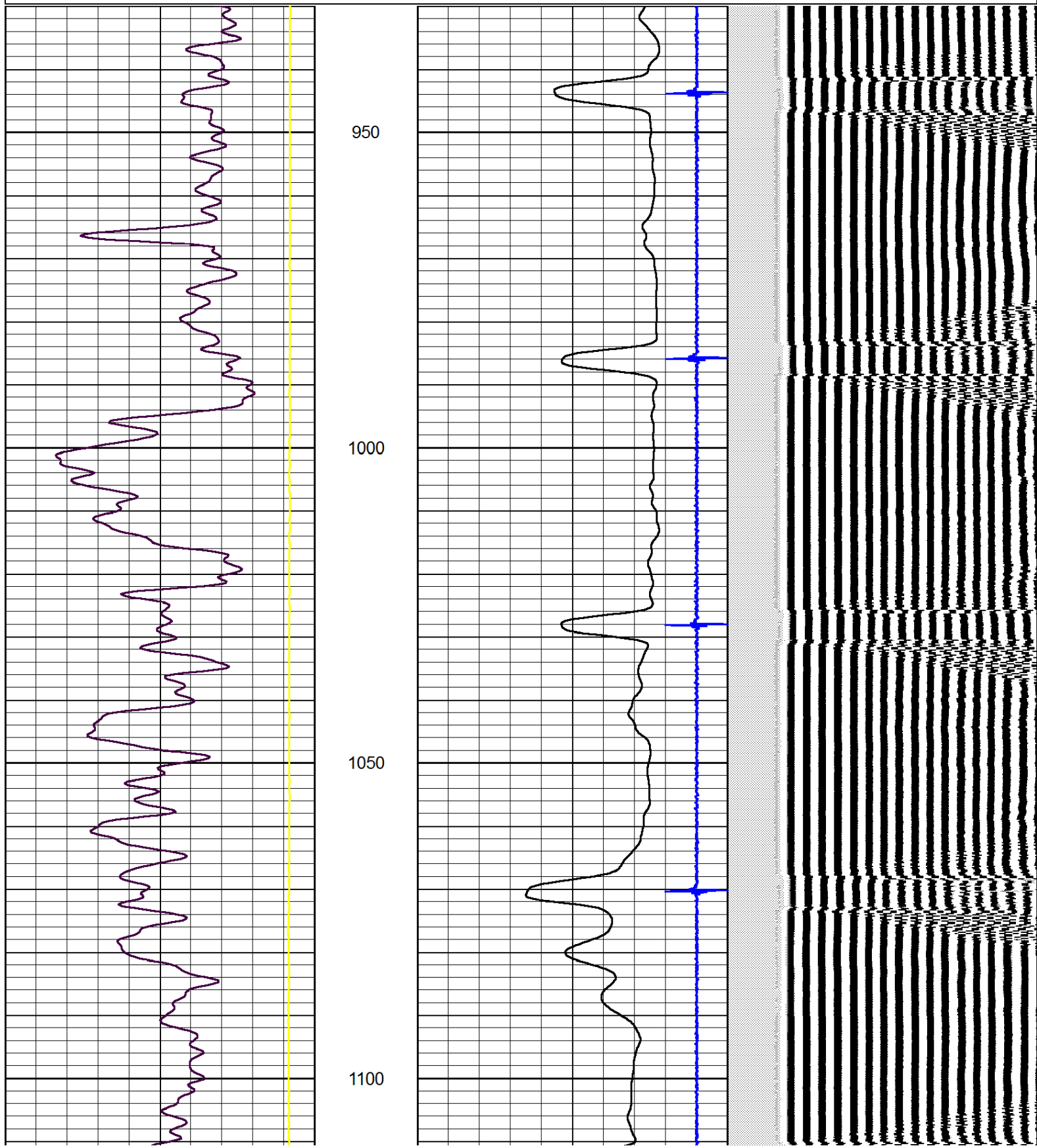
Winfield Ks,
East To Co. Rd 1, 5 South, 5 1/2 East,
East Into

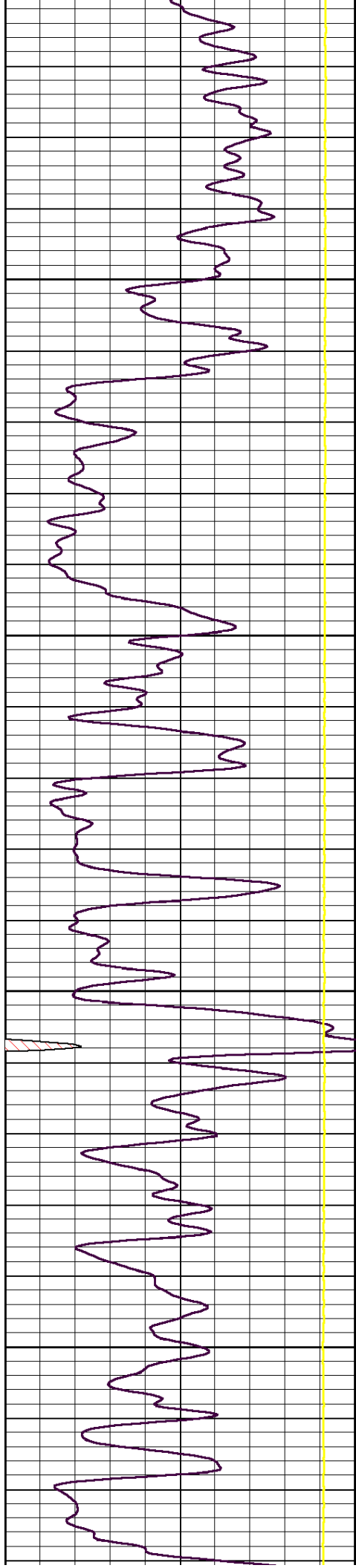


Main Pass

Database File: future_herradura_1.db
 Dataset Pathname: grcbl/pass4
 Presentation Format: cbldr
 Dataset Creation: Thu Aug 14 11:35:50 2014 by Log SCH 111116
 Charted by: Depth in Feet scaled 1:240

0	Gamma Ray	150	amp3ft	10	Casing Collars	-1.1	200	wvf5ft	1200
			(mV)	0	Amplified Amplitude (mV)	100			
			-100	10	Pipe Amplitude (mV)	20			



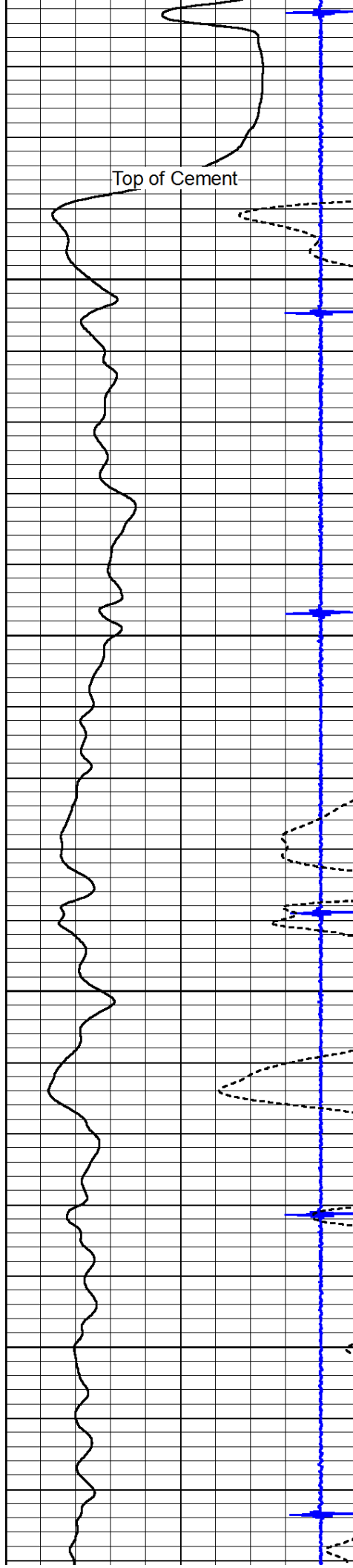


1150

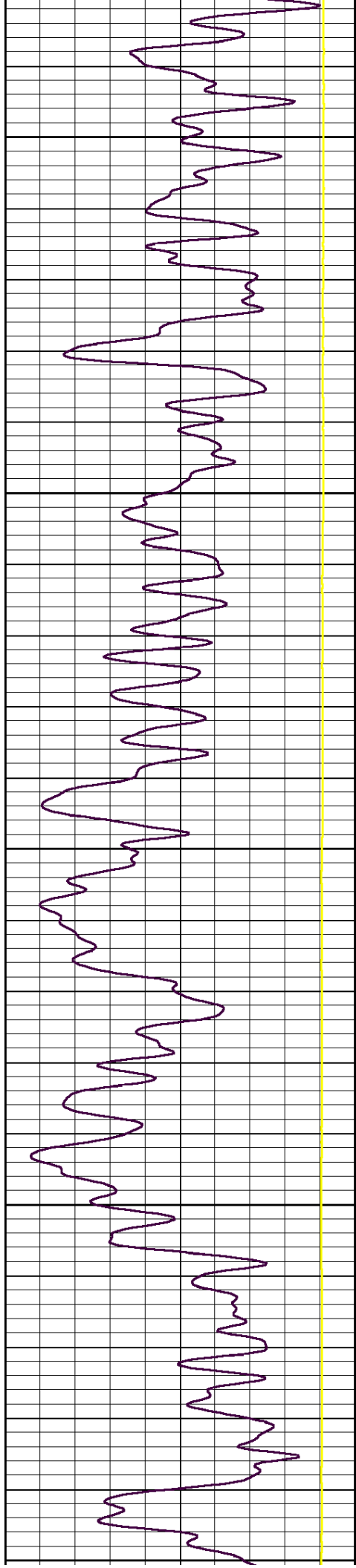
1200

1250

1300



Top of Cement



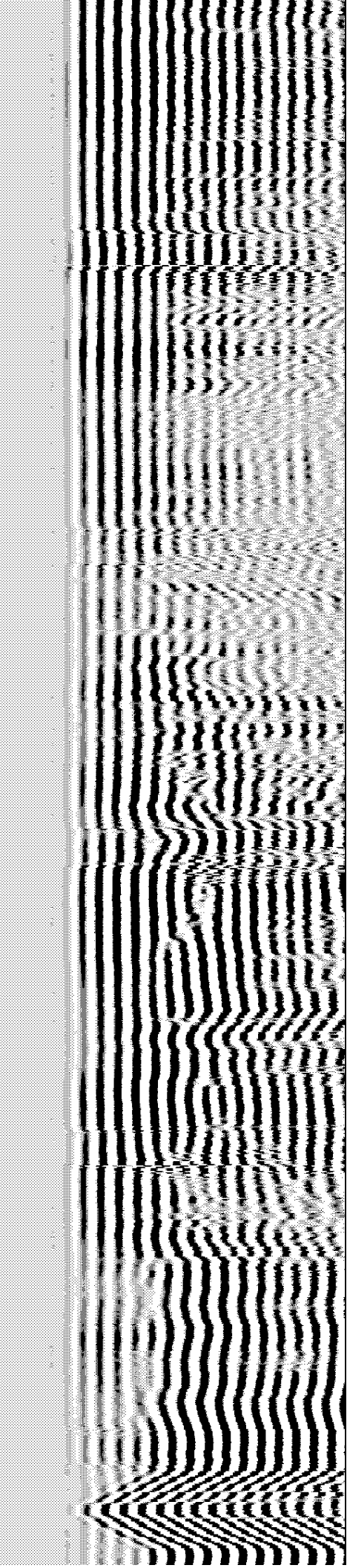
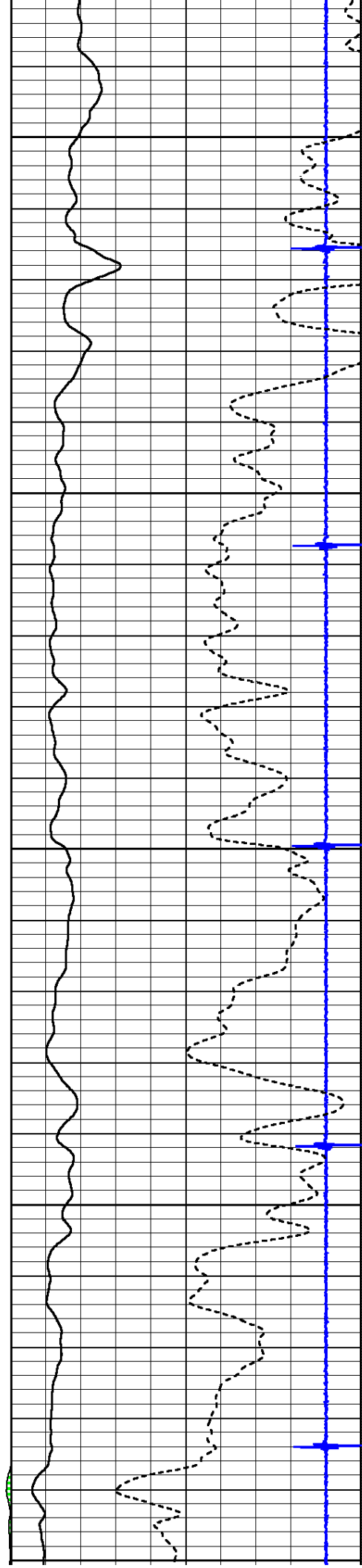
1350

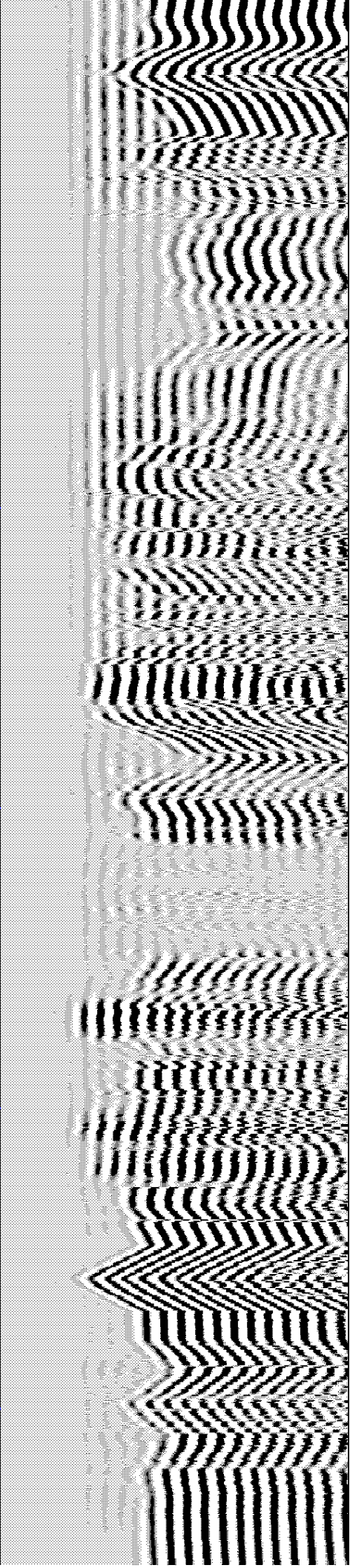
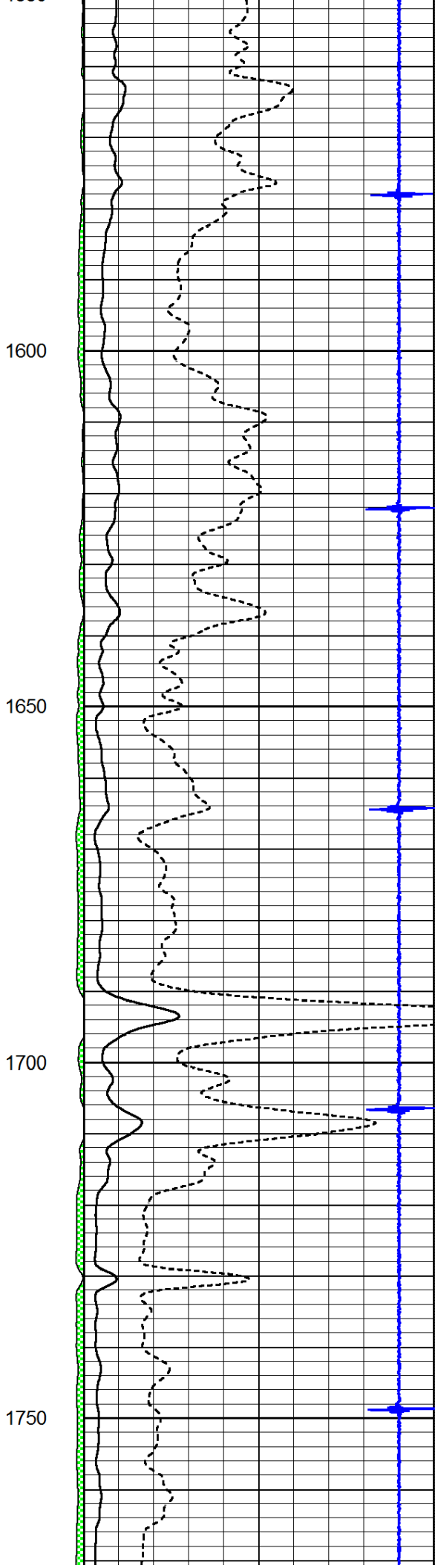
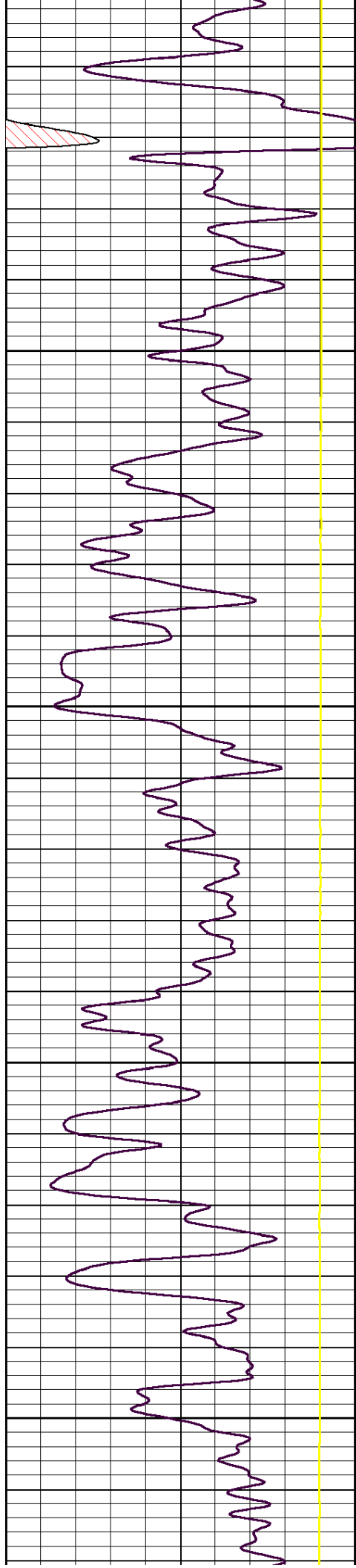
1400

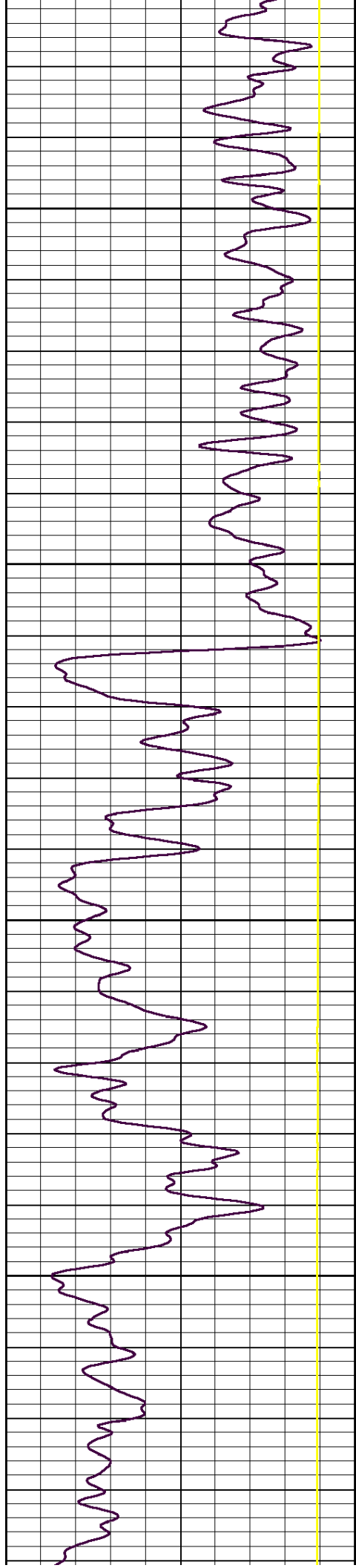
1450

1500

1550





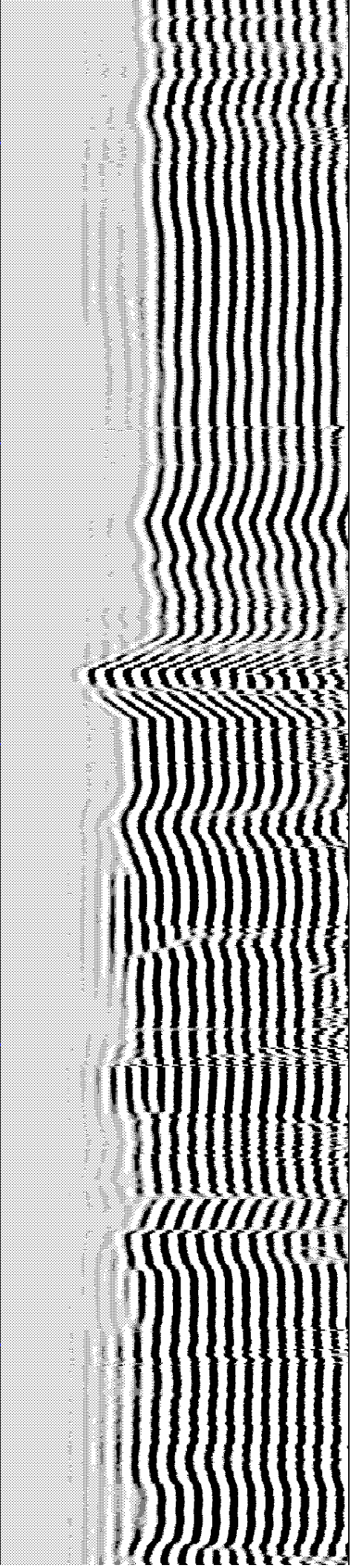
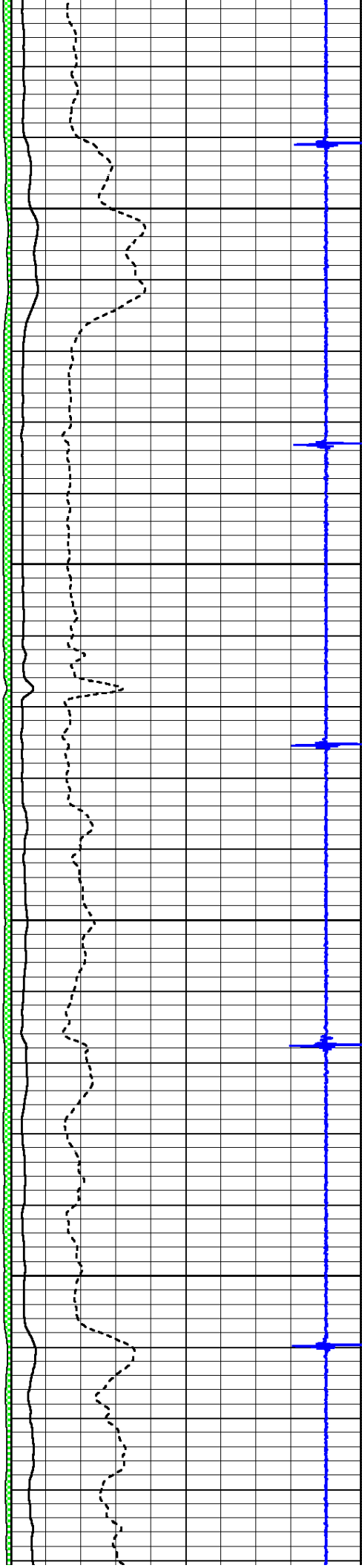


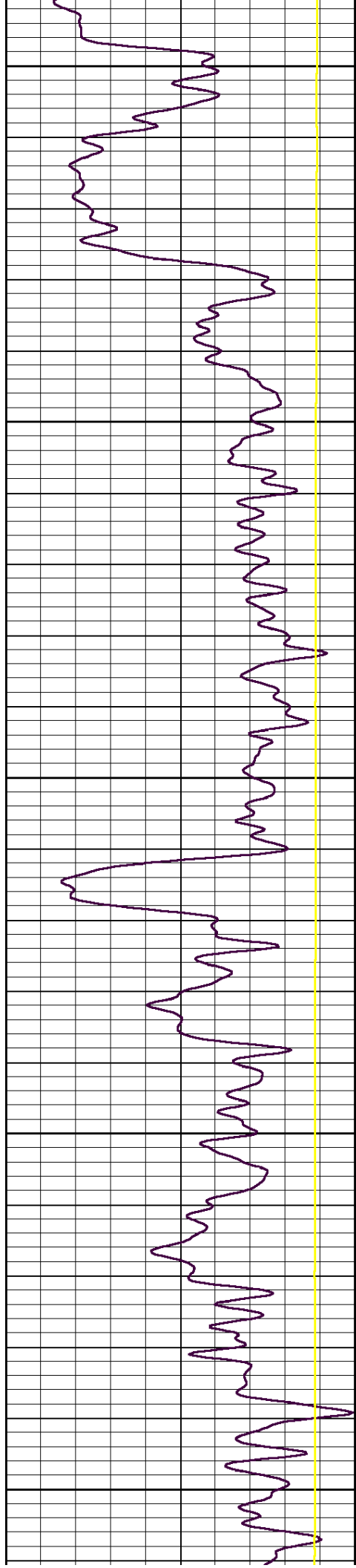
1800

1850

1900

1950





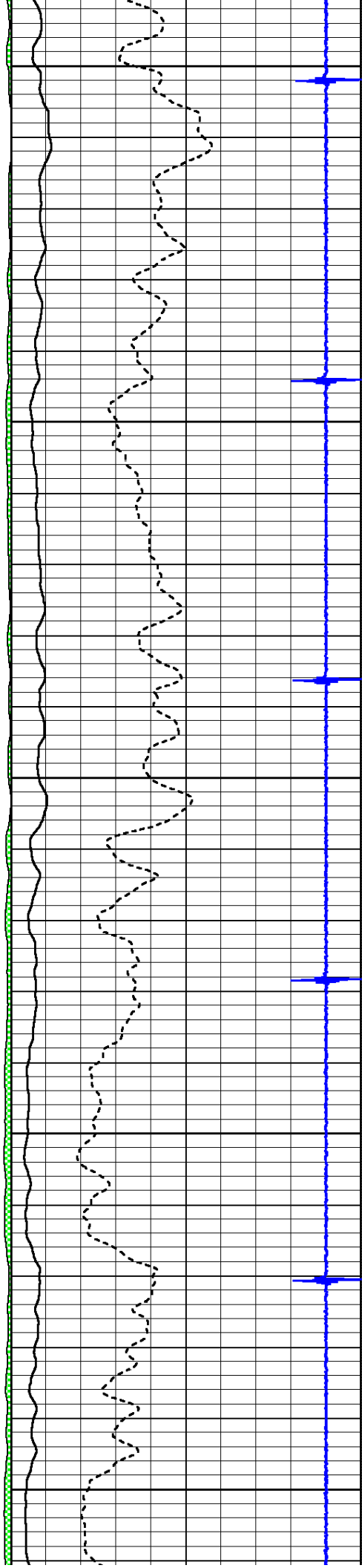
2000

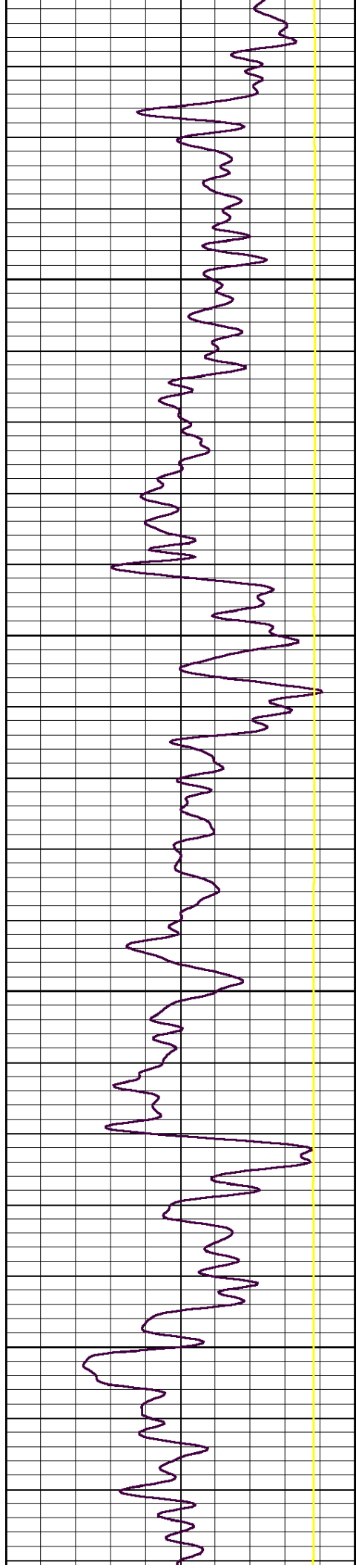
2050

2100

2150

2200



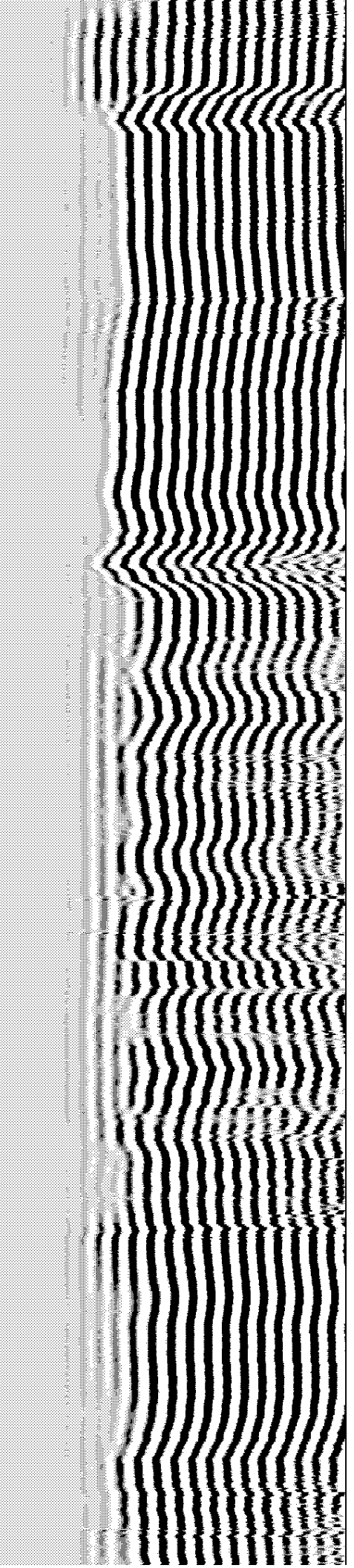
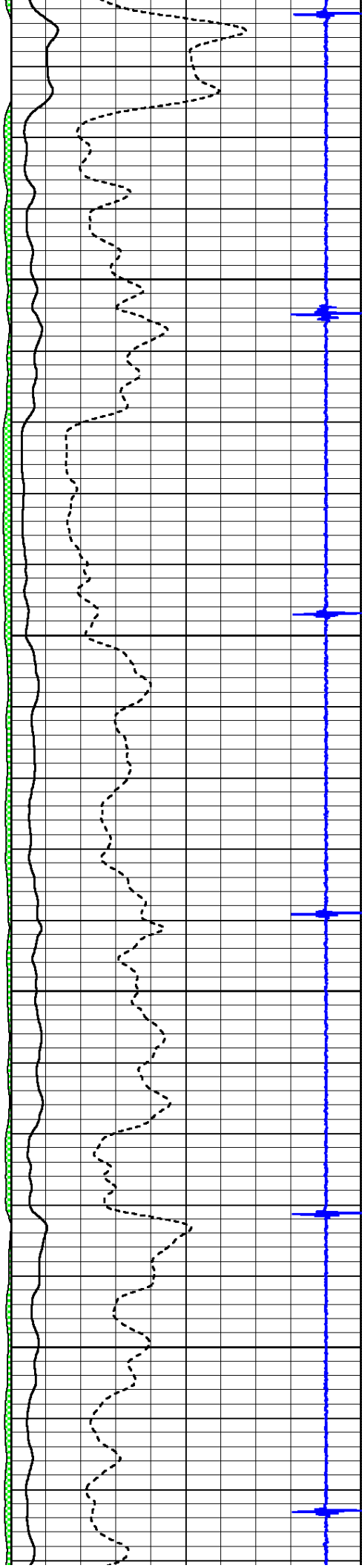


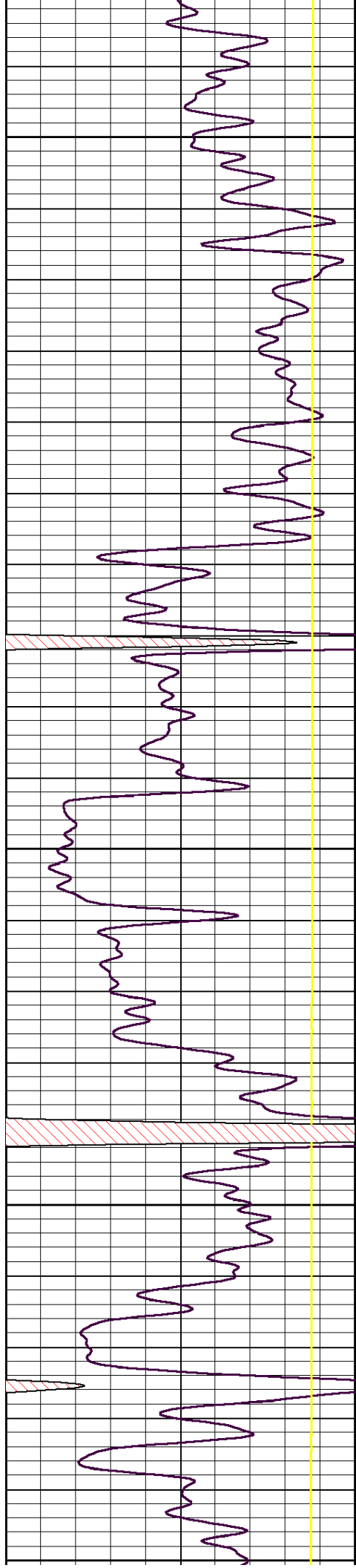
2250

2300

2350

2400





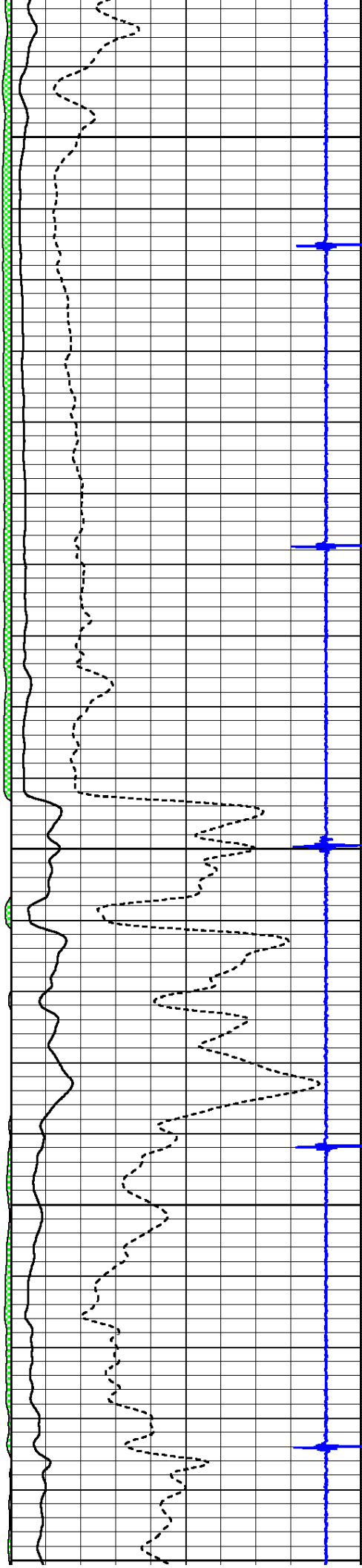
2450

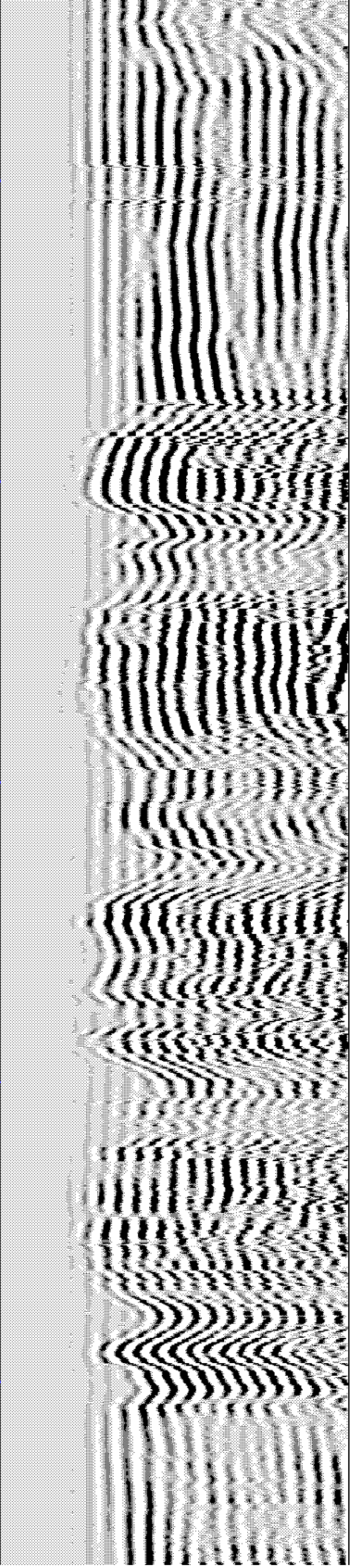
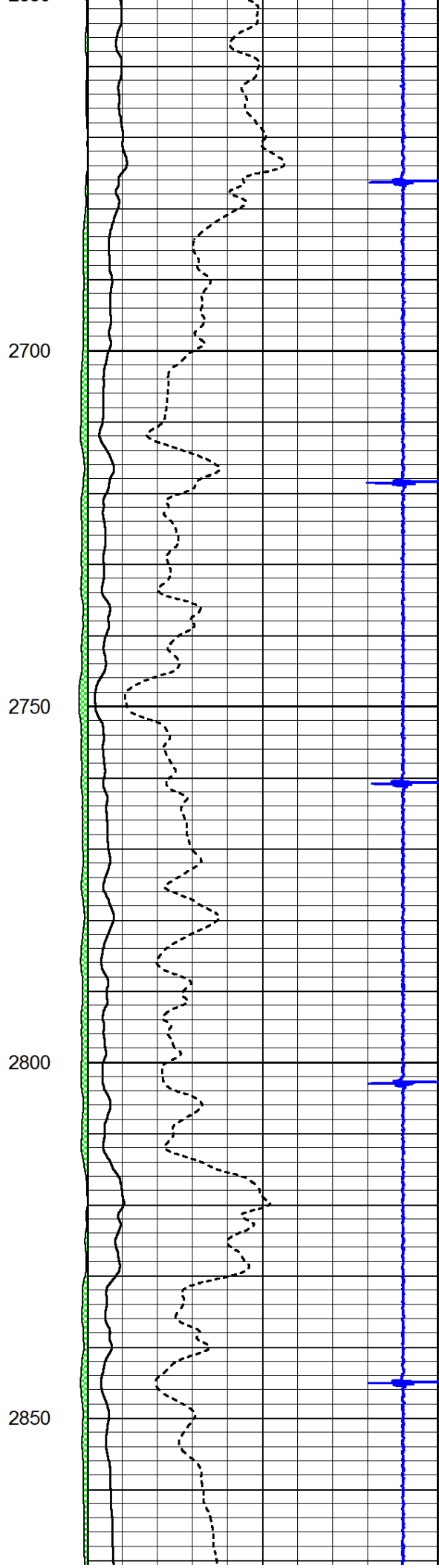
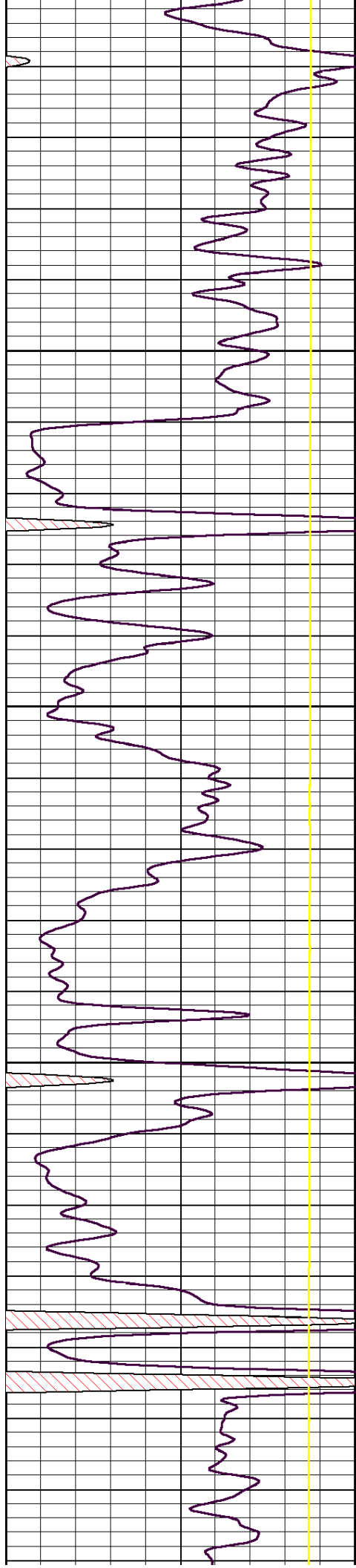
2500

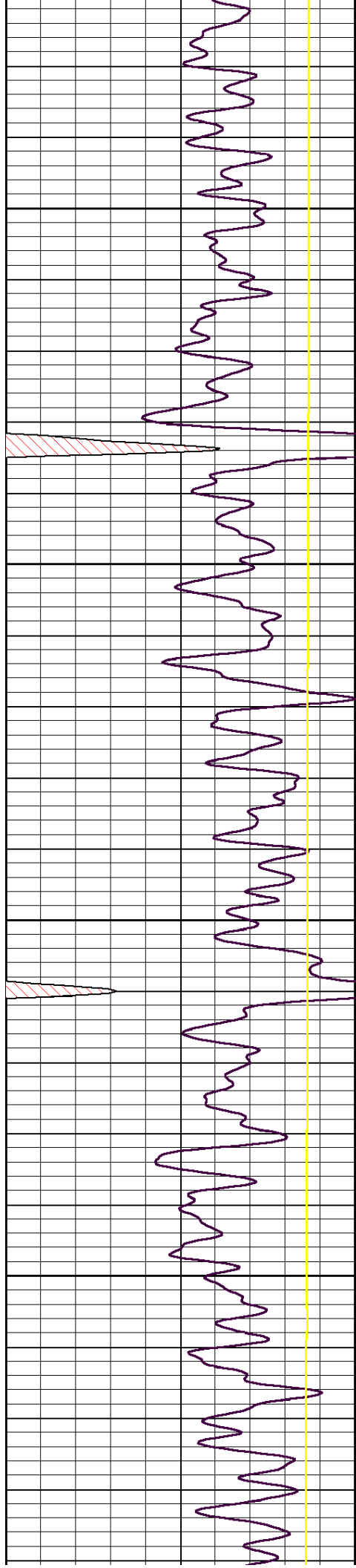
2550

2600

2650





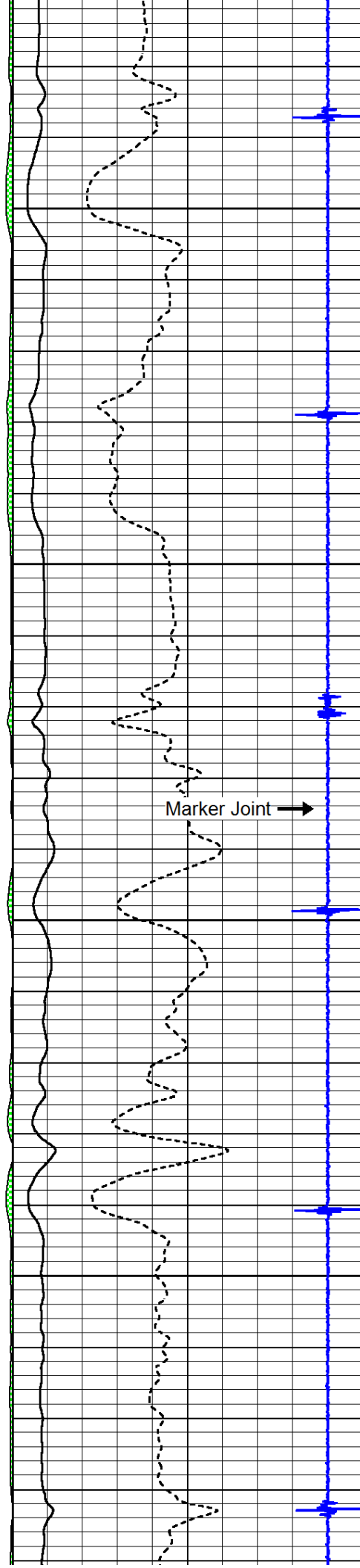


2900

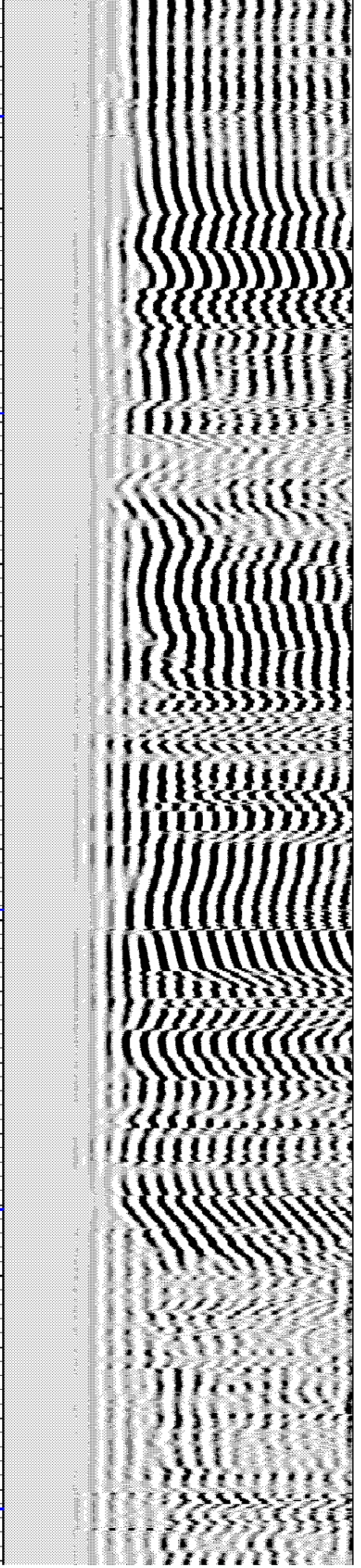
2950

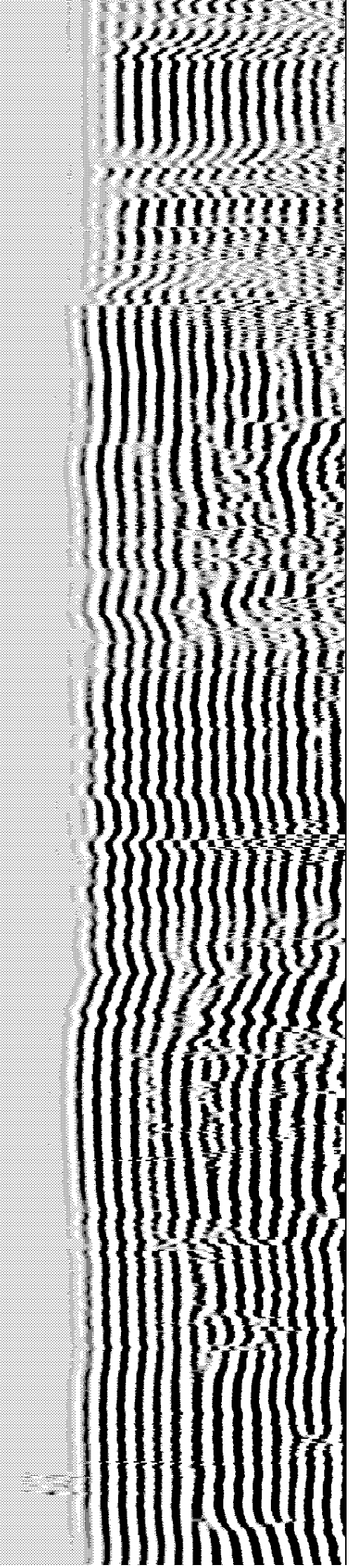
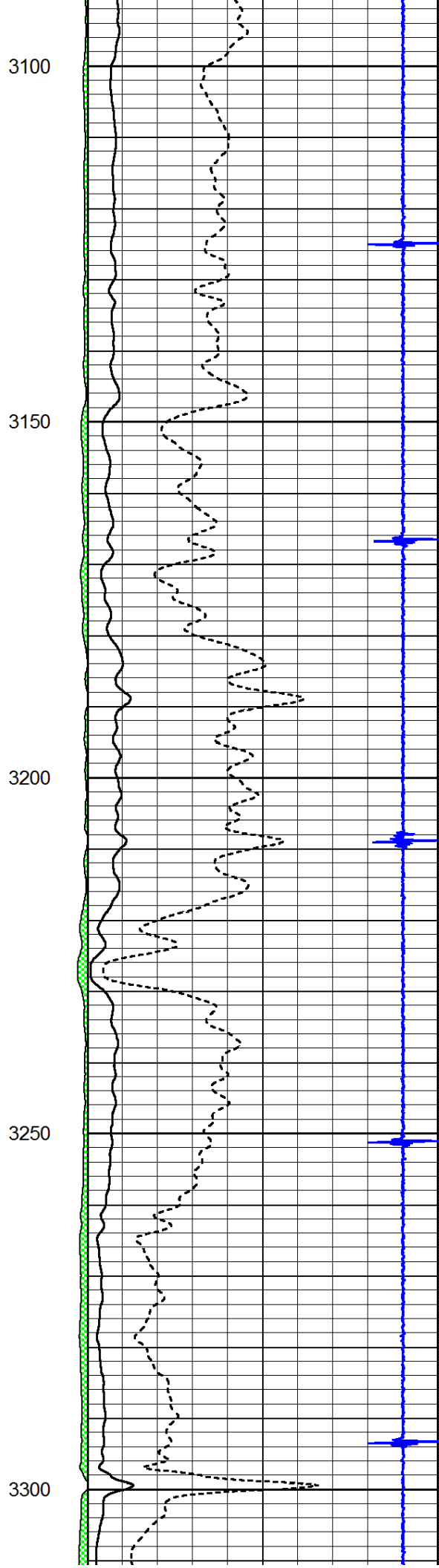
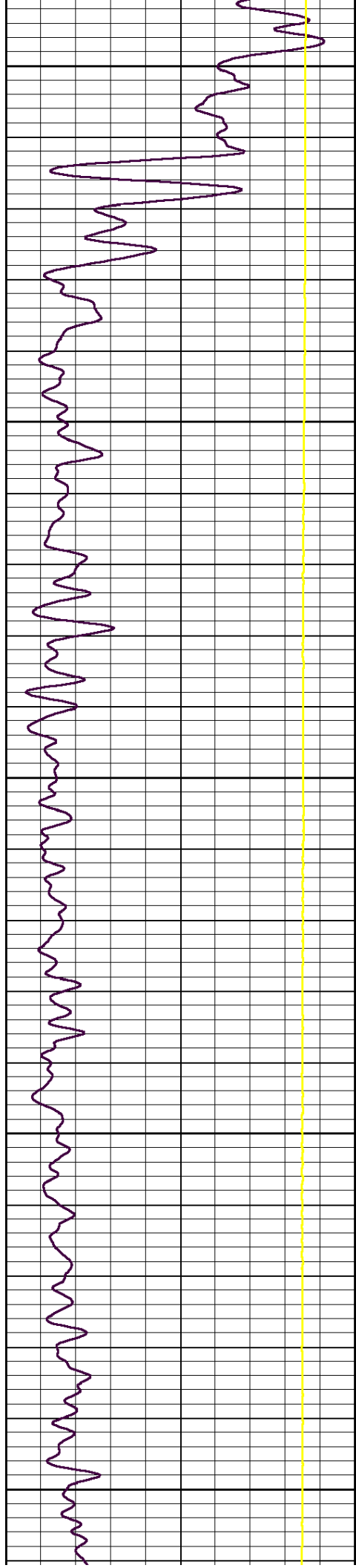
3000

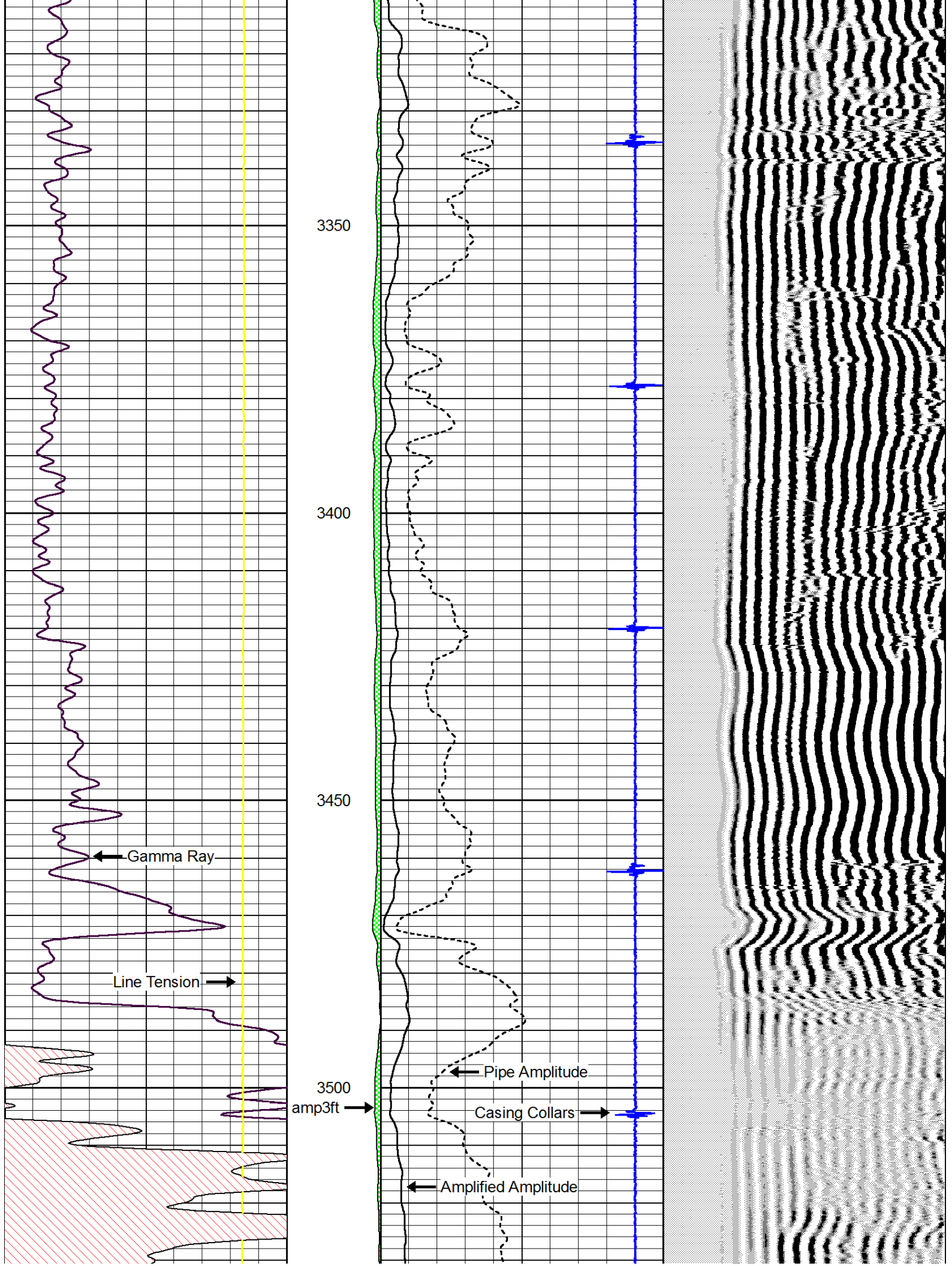
3050

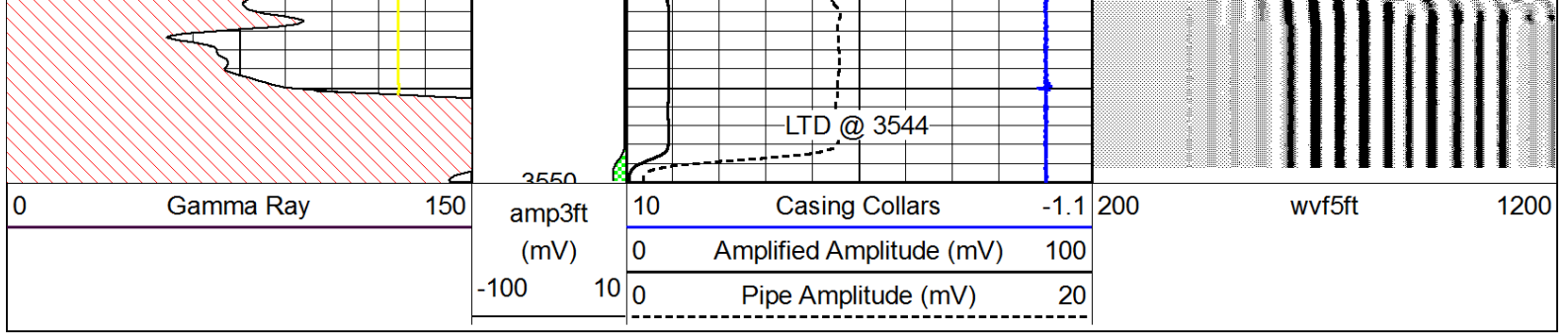



Marker Joint →











Repeat Section

Database File: future_herradura_1.db
 Dataset Pathname: grcbl/pass3
 Presentation Format: cbldr
 Dataset Creation: Thu Aug 14 11:28:20 2014 by Log SCH 111116
 Charted by: Depth in Feet scaled 1:240

