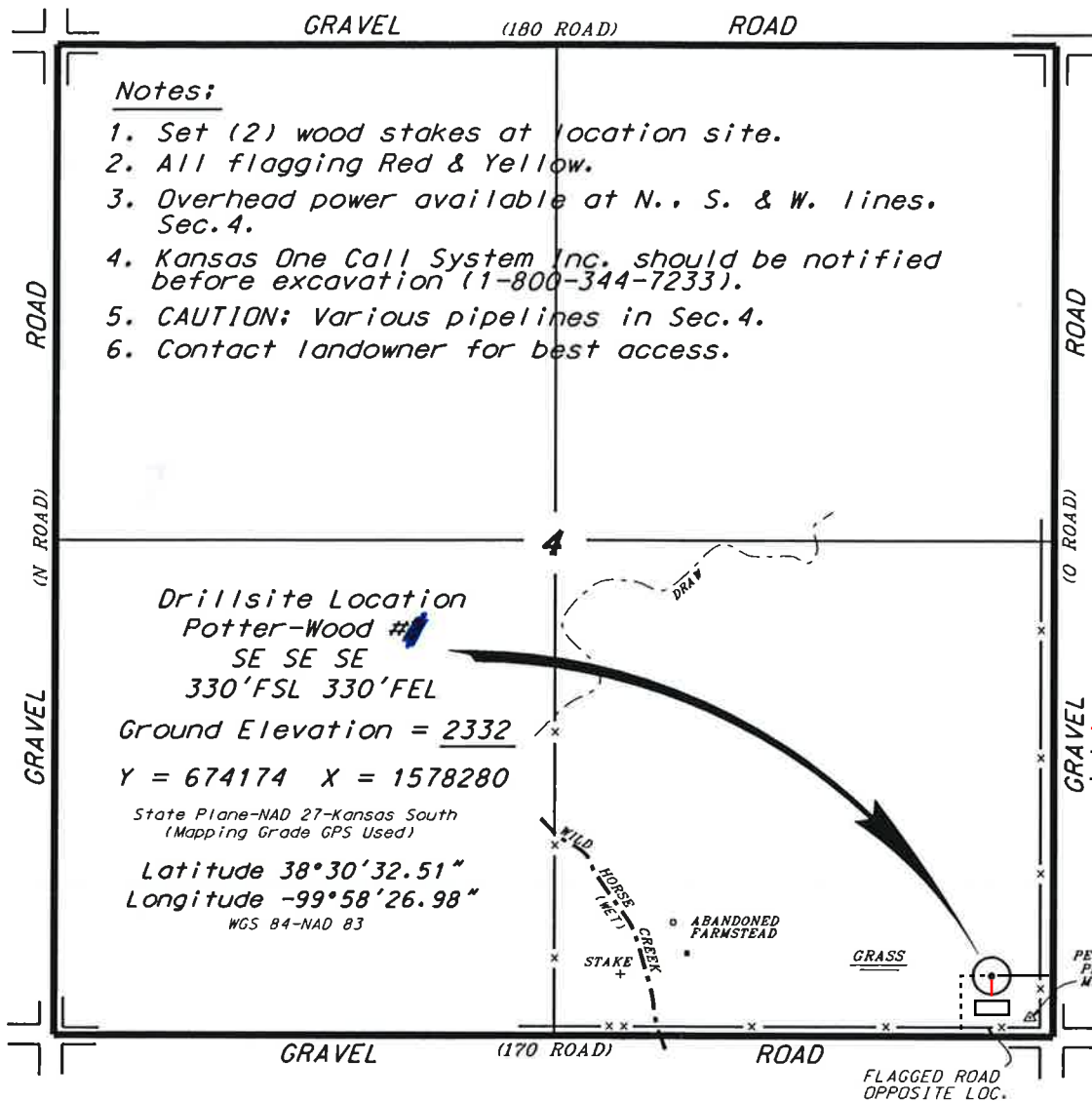


TRIPLE CROWN OPERATING, LLC
 POTTER/WOOD LEASE
 SE.1/4, SECTION 4, T18S, R24W
 NESS COUNTY, KANSAS

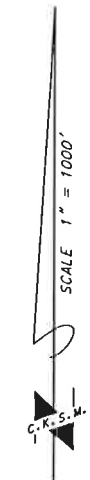
Notes:

1. Set (2) wood stakes at location site.
2. All flagging Red & Yellow.
3. Overhead power available at N., S. & W. lines. Sec. 4.
4. Kansas One Call System Inc. should be notified before excavation (1-800-344-7233).
5. CAUTION; Various pipelines in Sec. 4.
6. Contact landowner for best access.

* Ingress and egress to location as shown on this plat is per usage only and may not be legally opened for public use. Contact landowner, tenant and county road department for access.

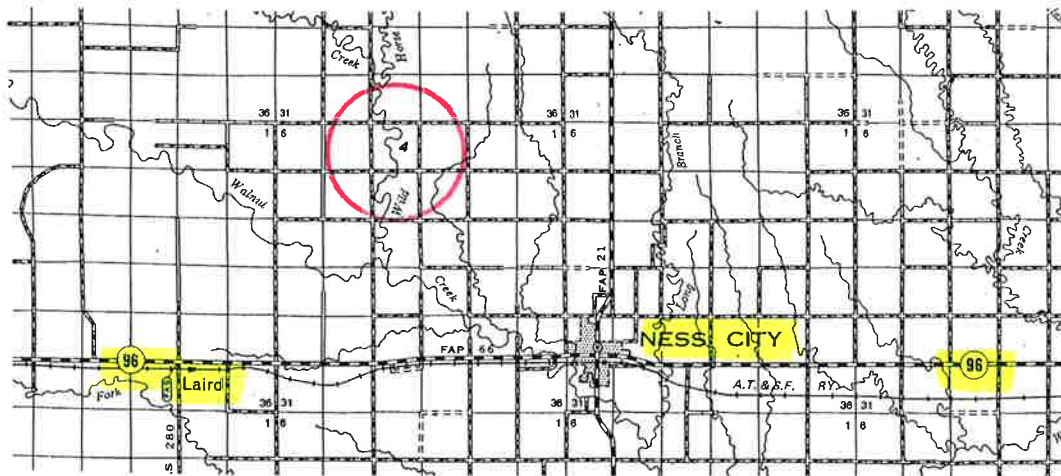


Drillsite Location
 Potter-Wood #1
 SE SE SE
 330' FSL 330' FEL
 Ground Elevation = 2332
 Y = 674174 X = 1578280
 State Plane-NAD 27-Kansas South
 (Mapping Grade GPS Used)
 Latitude 38°30'32.51"
 Longitude -99°58'26.98"
 WGS 84-NAD 83



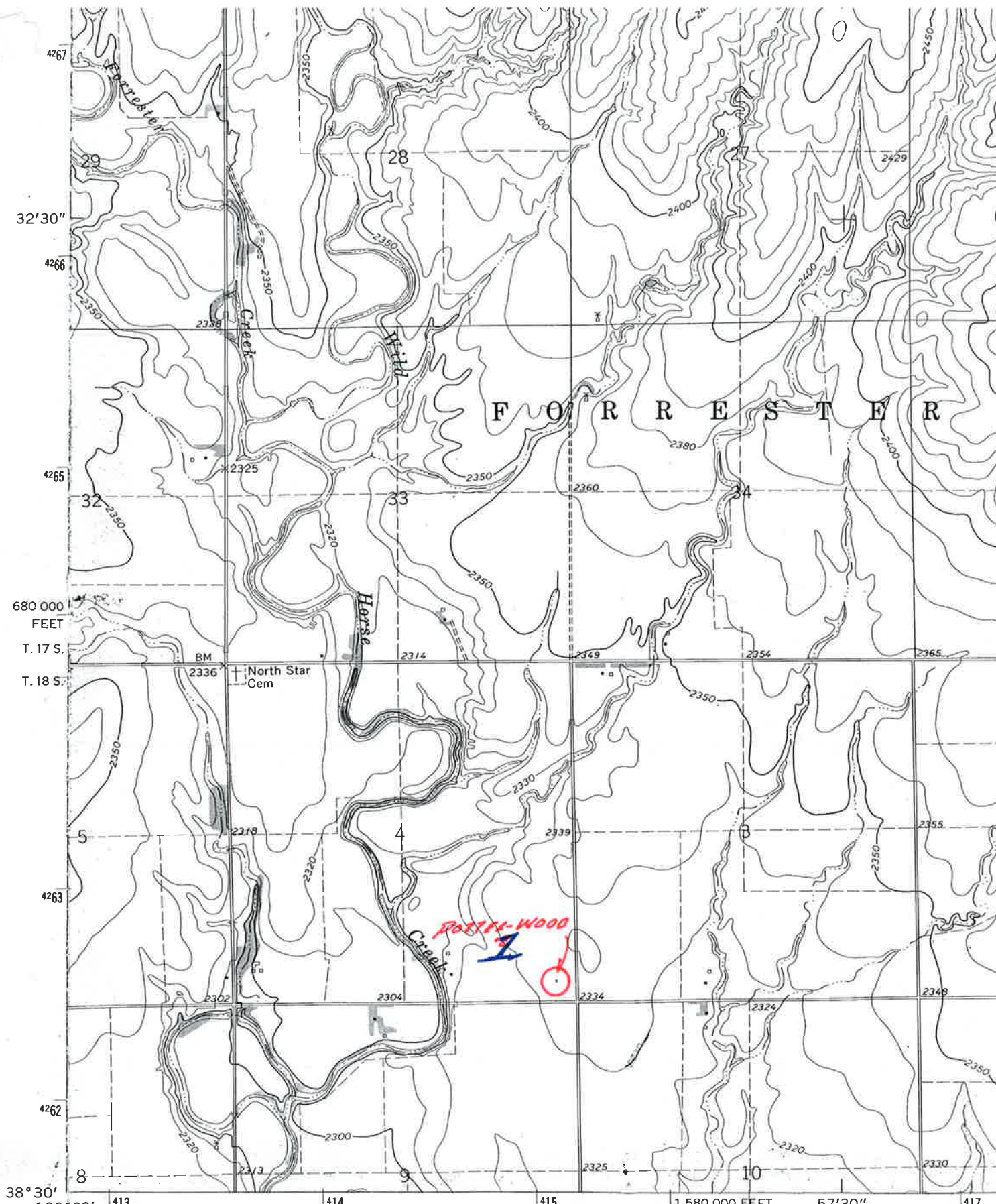
Legend

- Well Location
- Tank Battery Location
- Pipeline Location
- Electric Line Location
- Lease Road Location



* Controlling data is based upon the best maps and photographs available to us and upon a regular section of land containing 640 acres.
 * Approximate section lines were determined using the normal standard of care of oilfield surveyors practicing in the state of Kansas. The section corners, which establish the precise section lines, were not necessarily located, and the exact location of the drillsite location in the section is not guaranteed. Therefore, the operator securing this service and accepting this plat and all other parties relying thereon agree to hold Central Kansas Oilfield Services, Inc., its officers and employees harmless from all losses, costs and expenses and said entities released from any liability from incidental or consequential damages.
 * Elevations derived from National Geodetic Vertical Datum.

Date August 20, 2014



Mapped, edited, and published by the Geological Survey
 in cooperation with State of Kansas agencies
 Control by USGS and USC&GS
 Topography by photogrammetric methods from aerial
 photographs taken 1964. Field checked 1966
 Polyconic projection. 1927 North American datum
 10,000-foot grid based on Kansas coordinate system, south zone
 1000-meter Universal Transverse Mercator grid ticks,

(LAIRD)
 5960 / NE

