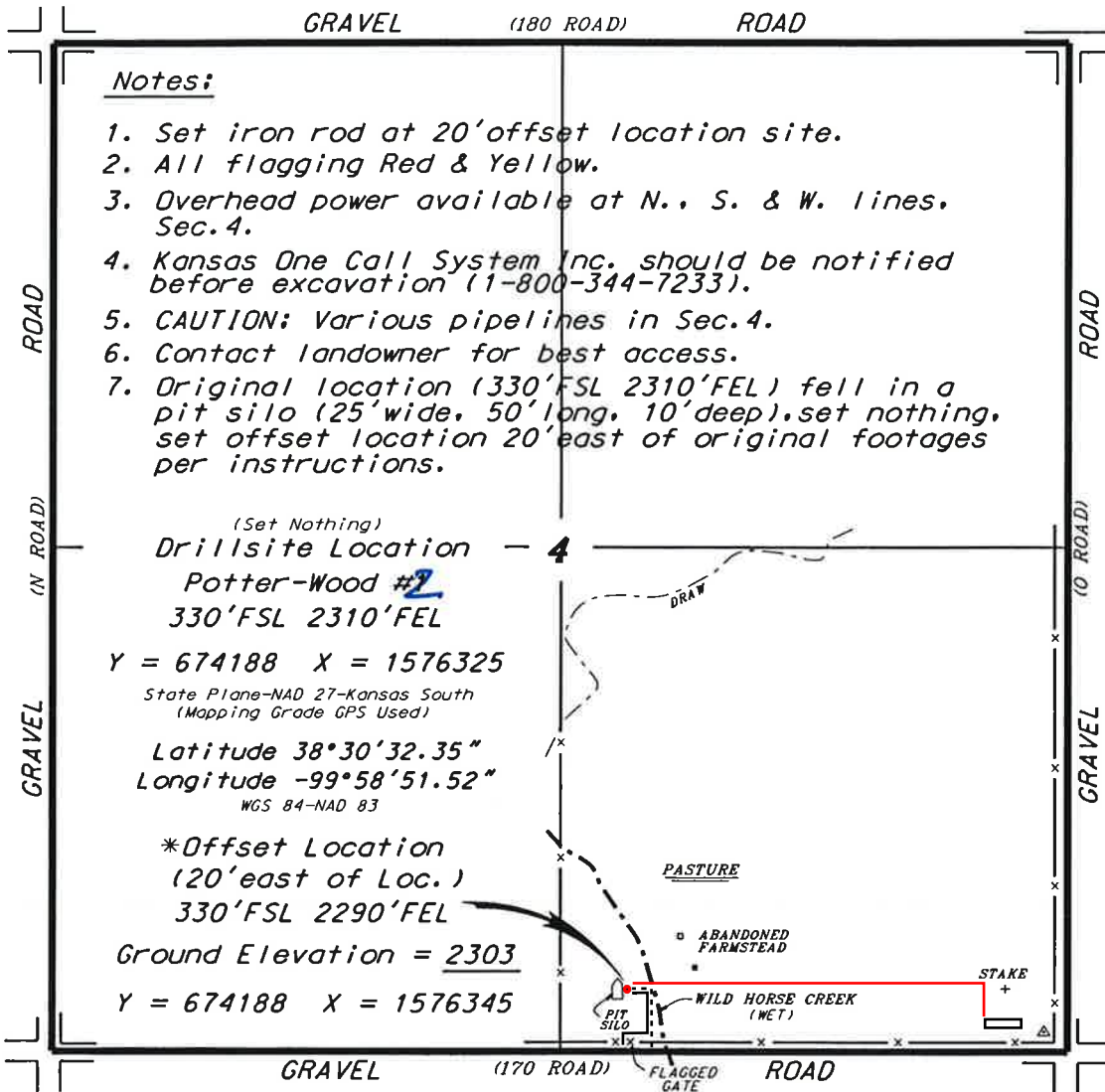


**TRIPLE CROWN OPERATING, LLC
POTTER/WOOD LEASE
SE. 1/4, SECTION 4, T18S, R24W
NESS COUNTY, KANSAS**



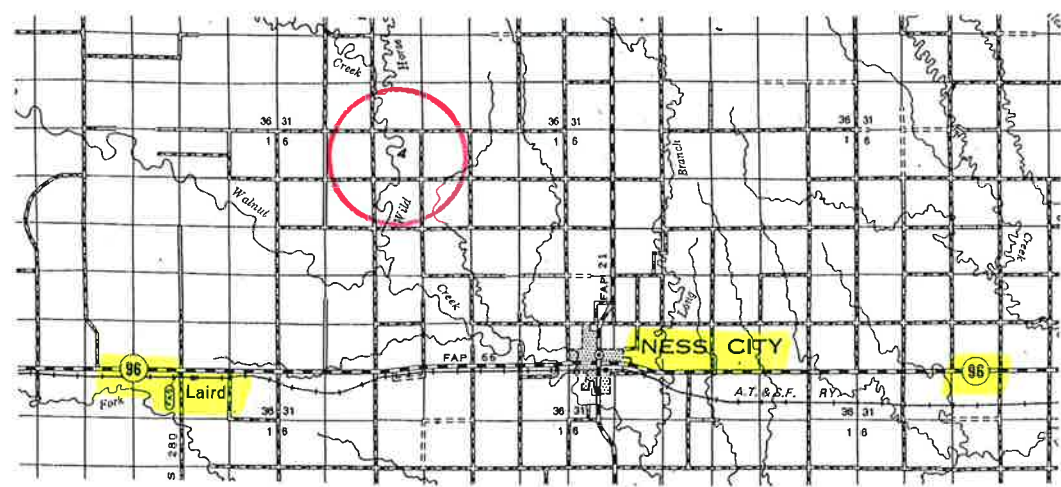
- Notes:**
1. Set iron rod at 20' offset location site.
 2. All flagging Red & Yellow.
 3. Overhead power available at N., S. & W. lines, Sec. 4.
 4. Kansas One Call System Inc. should be notified before excavation (1-800-344-7233).
 5. CAUTION: Various pipelines in Sec. 4.
 6. Contact landowner for best access.
 7. Original location (330' FSL 2310' FEL) fell in a pit silo (25' wide, 50' long, 10' deep), set nothing, set offset location 20' east of original footages per instructions.

(Set Nothing)
Drillsite Location — 4
Potter-Wood #2
330' FSL 2310' FEL
Y = 674188 X = 1576325
 State Plane-NAD 27-Kansas South
 (Mapping Grade GPS Used)
Latitude 38°30'32.35"
Longitude -99°58'51.52"
 WGS 84-NAD 83

***Offset Location**
(20' east of Loc.)
330' FSL 2290' FEL
Ground Elevation = 2303
Y = 674188 X = 1576345

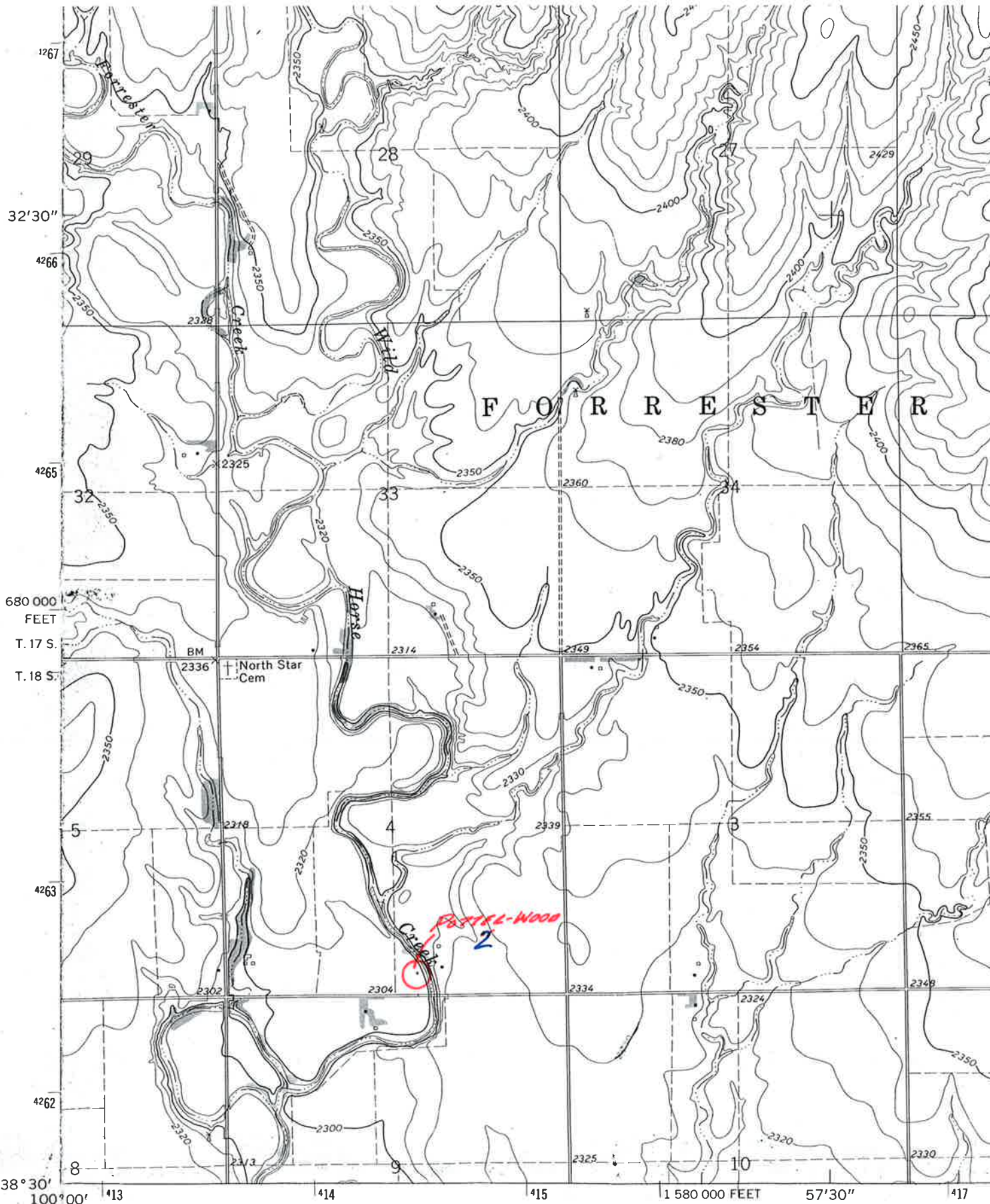
* Ingress and egress to location as shown on this plat is per usage only and may not be legally opened for public use. Contact landowner, tenant and county road department for access.

- Legend**
- Well Location
 - ▭ Tank Battery Location
 - Pipeline Location
 - Electric Line Location
 - Lease Road Location



* Controlling data is based upon the best maps and photographs available to us and upon a regular section of land containing 640 acres.
 * Approximate section lines were determined using the normal standard of care of oilfield surveyors practicing in the state of Kansas. The section corners, which establish the precise section lines, were not necessarily located, and the exact location of the drillsite location in the section is not guaranteed. Therefore, the operator securing this service and accepting this plot and all other parties relying thereon agree to hold Central Kansas Oilfield Services, Inc., its officers and employees harmless from all losses, costs and expenses and said entities released from any liability from incidental or consequential damages.
 * Elevations derived from National Geodetic Vertical Datum.

Date August 20, 2014



(LAIRD)
5960 / NE

Mapped, edited, and published by the Geological Survey
in cooperation with State of Kansas agencies

Control by USGS and USC&GS

Topography by photogrammetric methods from aerial
photographs taken 1964. Field checked 1966

Polyconic projection. 1927 North American datum
10,000-foot grid based on Kansas coordinate system, south zone
1000-meter Universal Transverse Mercator grid ticks,

