



TRILOBITE TESTING, INC.

DRILL STEM TEST REPORT

IA Operating Inc
 9915 W 21st ST STE B
 Wichita KS, 67205
 ATTN: Jeff Lawler

19-11s-15w Russell KS
Thomas Unit # 1-19
 Job Ticket: 54051 **DST#: 3**
 Test Start: 2014.06.02 @ 13:36:00

GENERAL INFORMATION:

Formation: **LKC "I,J,K"**
 Deviated: No Whipstock: ft (KB)
 Test Type: Conventional Bottom Hole (Reset)
 Time Tool Opened: 15:39:30
 Tester: Cody Bloedorn
 Time Test Ended: 20:40:30
 Unit No: 73
Interval: 3182.00 ft (KB) To 3265.00 ft (KB) (TVD)
 Reference Elevations: 1792.00 ft (KB)
 Total Depth: 3265.00 ft (KB) (TVD)
 1784.00 ft (CF)
 Hole Diameter: 7.88 inches
 Hole Condition: Fair
 KB to GR/CF: 8.00 ft

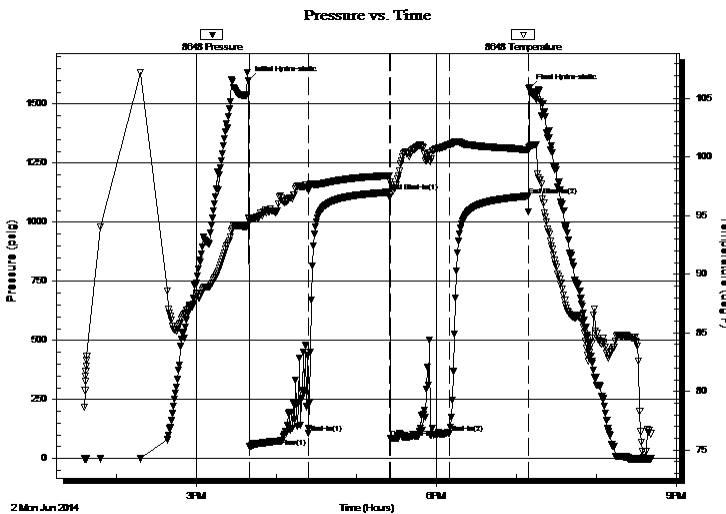
Serial #: 8648

Inside

Press @ Run Depth: 107.77 psig @ 3252.00 ft (KB) Capacity: 8000.00 psig
 Start Date: 2014.06.02 End Date: 2014.06.02 Last Calib.: 2014.06.02
 Start Time: 13:36:05 End Time: 20:40:29 Time On Btm: 2014.06.02 @ 15:39:00
 Time Off Btm: 2014.06.02 @ 19:09:15

TEST COMMENT: 45 - IF- 3" blow
 60 - IS- No return
 45 - FF- 3 1/2" blow
 60 - FS- No return

PRESSURE SUMMARY



Time (Min.)	Pressure (psig)	Temp (deg F)	Annotation
0	1598.68	94.83	Initial Hydro-static
1	49.46	94.56	Open To Flow (1)
45	107.75	97.16	Shut-In(1)
106	1126.87	98.42	End Shut-In(1)
107	85.72	97.92	Open To Flow (2)
151	107.77	101.05	Shut-In(2)
210	1110.53	100.61	End Shut-In(2)
211	1565.47	100.82	Final Hydro-static

Recovery

Length (ft)	Description	Volume (bbl)
124.00	Mud - oil spots, 100%M	1.47

Gas Rates

Choke (inches)	Pressure (psig)	Gas Rate (Mcf/d)

* Recovery from multiple tests



**TRILOBITE
TESTING, INC.**

DRILL STEM TEST REPORT

FLUID SUMMARY

IA Operating Inc
9915 W 21st ST STE B
Wichita KS, 67205
ATTN: Jeff Lawler

19-11s-15w Russell KS
Thomas Unit # 1-19
Job Ticket: 54051 **DST#: 3**
Test Start: 2014.06.02 @ 13:36:00

Mud and Cushion Information

Mud Type: Gel Chem	Cushion Type:	Oil API:	deg API
Mud Weight: 9.00 lb/gal	Cushion Length: ft	Water Salinity:	ppm
Viscosity: 59.00 sec/qt	Cushion Volume: bbl		
Water Loss: 7.99 in ³	Gas Cushion Type:		
Resistivity: ohm.m	Gas Cushion Pressure: psig		
Salinity: 5500.00 ppm			
Filter Cake: inches			

Recovery Information

Recovery Table

Length ft	Description	Volume bbl
124.00	Mud - oil spots, 100%M	1.466

Total Length: 124.00 ft Total Volume: 1.466 bbl
 Num Fluid Samples: 0 Num Gas Bombs: 0 Serial #:
 Laboratory Name: Laboratory Location:
 Recovery Comments:

Pressure vs. Time

