



Musgrove

PETROLEUM CORPORATION
Clayton, Kansas

NOTES

Company: American Warrior, Inc.

Lease: Handy 9-29

Field: Blue Bell

Location: NE-SW-SW-SW

Sec: 29 Twsp: 34S Rge: 31W

County: Seward State: Kansas

KB: 2733' GL: 2720'

API #: 15-175-22220-00-00

Contractor: Duke Drilling Inc. (Rig #9)

Spud: 07/05/2014 Comp: 07/17/2014

RTD: 6500' LTD: 6502'

Mud Up: 4200' Type Mud: Chemical

Samples Saved From: 4300' to RTD

Drilling Time Kept From: 4300' to RTD

Samples Examined From: 4300' to RTD

Geological Supervision from: 4300' to RTD

Geologist on Well: Wyatt Urban

Surface Casing: 8 5/8@ 1705'

Electronic Surveys: Logged by Pioneer Energy Services: CNL/CDL, MEL, DIL

American Warrior, Inc. well comparison sheet

DRILLING WELL					COMPARISON WELL				COMPARISON WELL			
American Warrior-Handy 9-29 NE-SW-SW-SW 29-34S-31W					American Warrior-Handy 8-29 SW-NW-NE-SW 29-34S-31W				American Warrior-Handy 7-29 SE-NW-NW-SW 29-34S-31W			
2733 KB					2741 KB		Structural Relationship		2730 KB		Structural Relationship	
Formation	Sample	Sub-Sea	Log	Sub-Sea	Log	Sub-Sea	Sample	Log	Log	Sub-Sea	Sample	Log
Heebner	4416	-1683	4416	-1683	4400	-1659	-24	-24	4391	-1661	-22	-22
Toronto	4436	-1703	4444	-1711	4425	-1684	-19	-27	4419	-1689	-14	-22
Lansing	4561	-1828	4569	-1836	4556	-1815	-13	-21	4556	-1826	-2	-10
Marmaton	5253	-2520	5258	-2525	5245	-2504	-16	-21	5239	-2509	-11	-16
Morrow	5808	-3075	5797	-3064	5781	-3040	-35	-24	5774	-3044	-31	-20
Chester	5958	-3225	5955	-3222	5917	-3176	-49	-46	5918	-3188	-37	-34
Ste. Gen	6263	-3530	6264	-3531	6222	-3481	-49	-50	6213	-3483	-47	-48
St. Louis	6382	-3649	6380	-3647	6352	-3611	-38	-36	6335	-3605	-44	-42
RTD	6500	-3767	6500	-3767	6500	-3759	-8	-8	6500	-3770	3	3
LTD	6502	-3769	6502	-3769	6501	-3760	-9	-9	6503	-3773	4	4



DRILL STEM TEST REPORT



TRILOBITE TESTING, INC

American Warrior Inc.
3118 Cummings Rd.
Garden City, KS 67846
ATTN: Wyatt Urban

29-34s-31w-Seward Co,KS

Handy #9-29

Job Ticket: 56550 **DST#:1**
Test Start: 2014.07.13 @ 02:27:00

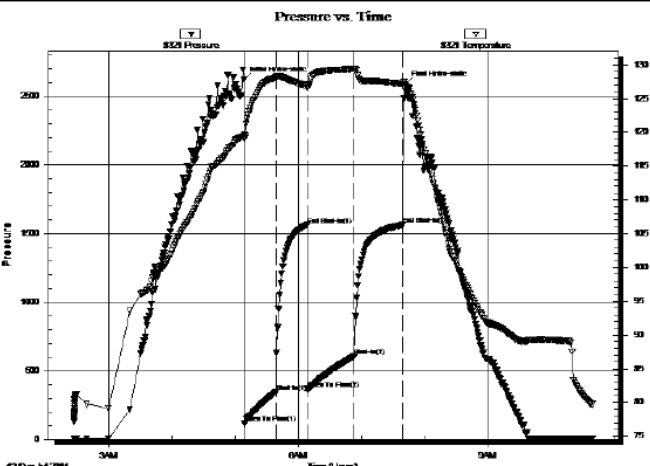
GENERAL INFORMATION:

Formation: **Marmaton**
Deviated: No Whipstock: ft (KB)
Time Tool Opened: 05:09:00
Time Test Ended: 10:40:00
Test Type: Conventional Bottom Hole (Initial)
Tester: Cornelio Landa III
Unit No: 48
Interval: **5277.00 ft (KB) To 5363.00 ft (KB) (TVD)**
Total Depth: 5363.00 ft (KB) (TVD)
Reference Elevations: 2733.00 ft (KB)
2720.00 ft (CF)
Hole Diameter: 7.88 inches Hole Condition: KB to GR/CF: 13.00 ft

Serial #: 8321

Press@RunDepth: 607.23 psig @ ft (KB) Capacity: 8000.00 psig
Start Date: 2014.07.13 End Date: 2014.07.13 Last Calib.: 2014.07.13
Start Time: 02:27:01 End Time: 10:40:00 Time On Btm: 2014.07.13 @ 05:08:30
Time Off Btm: 2014.07.13 @ 07:41:30

TEST COMMENT: F: B.o.b. in 4 1/2 min.
IS: Bled off in 3 min.-No return
FF: B.o.b. in 8 min.
FS: Bled off in 3 min.-No return



PRESSURE SUMMARY

Time (Min.)	Pressure (psig)	Temp (deg F)	Annotation
0	2618.68	119.59	Initial Hydro-static
1	116.56	119.04	Open To Flow (1)
31	345.37	128.16	Shut-h(1)
60	1561.81	126.92	End Shut-h(1)
61	363.21	126.59	Open To Flow (2)
105	607.23	129.37	Shut-h(2)
151	1563.41	127.21	End Shut-h(2)
153	2583.94	127.01	Final Hydro-static

Recovery

Length (ft)	Description	Volume (bbl)
180.00	Mcsw 4m 96sw	0.89
441.00	Mcsw 8m 92sw	6.19
315.00	Mcsw 20m 80sw	4.42
189.00	Mcsw 40m 60sw	2.65
126.00	Mcsw 50m 50sw	1.77

Gas Rates

Choke (inches)	Pressure (psig)	Gas Rate (Mcf/c)



TRILOBITE TESTING, INC

DRILL STEM TEST REPORT

American Warrior Inc.
3118 Cummings Rd.
Garden City, KS 67846
ATTN: Wyatt Urban

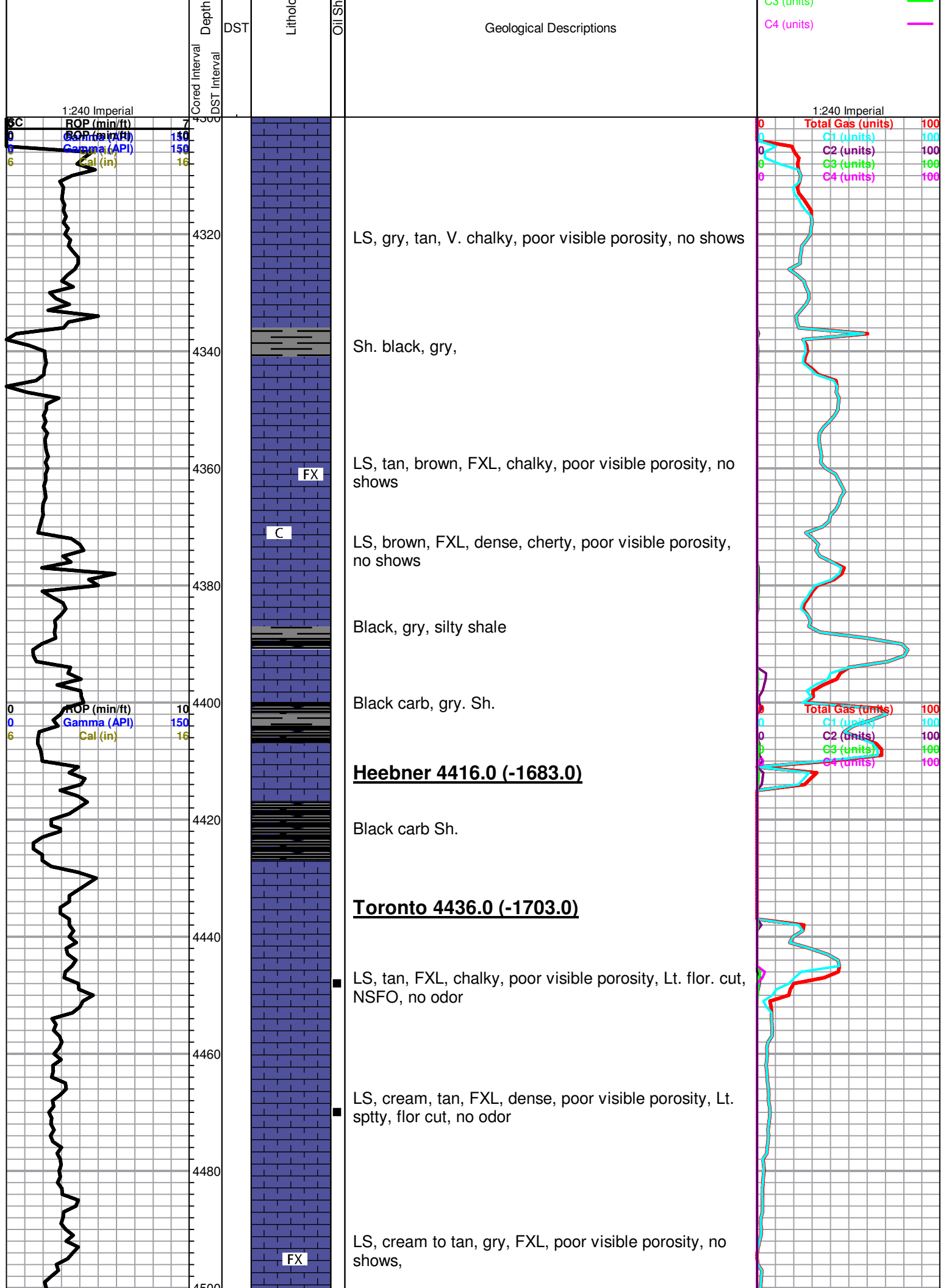
29-34s-31w-Seward Co,KS

Handy #9-29

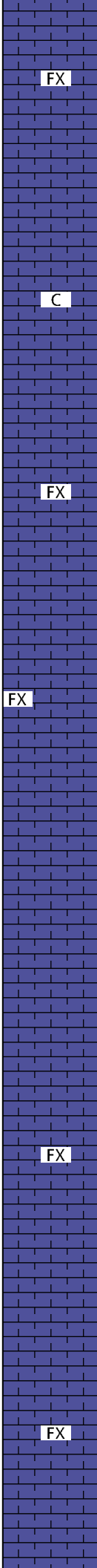
Job Ticket: 56551 **DST#:2**
Test Start: 2014.07.16 @ 03:40:00

GENERAL INFORMATION:

Formation: **Chester**
Deviated: No Whipstock: ft (KB)
Time Tool Opened:
Time Test Ended: 11:03:00
Test Type: Conventional Bottom Hole (Reset)
Tester: Cornelio Landa III
Unit No: 48



4500
4520
4540
4560
4580
4600
4620
4640
4660
4680
4700
4720



LS, gry, FXL, cherty, few fos, no shows

LS, A/A

LS, tan, cream, chalky, poor visible porosity, no shows

Lansing 4566.0 (-1831.0)

LS, tan, brown, FXL, dense, poor visible porosity, no shows

LS, cream, tan, FXL, dense, sl. chalky in parts, trc. white chert, no shows

ROP (min/ft) 10
Gamma (API) 150
Cal (in) 16

Total Gas (units) 100
C1 (units) 100
C2 (units) 100
C3 (units) 100
C4 (units) 100

LS, tan, FXL, foss, poor visible porosity, no shows, no odor

LS, brown, tan, FXL, foss, slightly chalky, poor visible porosity, no shows

LS, brown, FXL, cherty, poor visible porosity, no shows, no odor

4720
4740
4760
4780
4800
4820
4840
4860
4880
4900
4920
4940

ROP (min/ft) 10
Gamma (API) 150
Cal (in) 16

0
0
6

Total Gas (units) 100
C1 (units) 100
C2 (units) 100
C3 (units) 100
C4 (units) 100

0
0
6
6

FX

FX

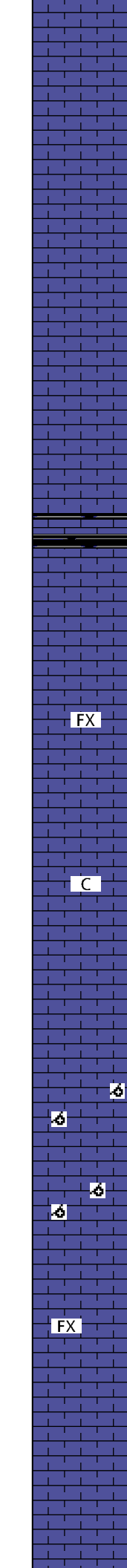
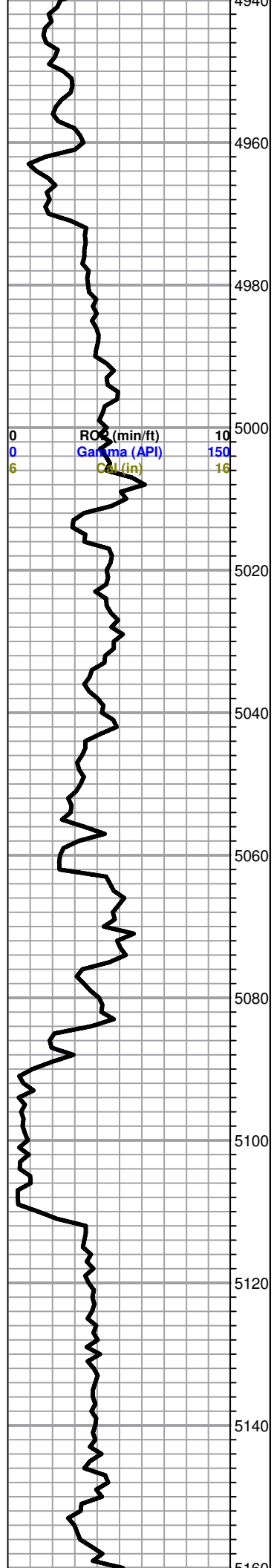
LS, gray tan, FXL, chalky, poor visible porosity, no shows

LS, brown, FXL, cherty, poor visible porosity, no shows, no odor

LS, tan, cream, FXL, dense, poor visible porosity, no shows

LS, brown, FXL, cherty, dense, poor visible porosity, no shows no odor

LS, cream, tan, FX, dense, no shows,



LS, gry, white, FXL, few ool, poorly developed, no shows, no odor

4960

LS, gry, FXL, dense, cherty, poor visible porosity, no shows

4980

5000

LS, cream to tan, FXL, few foss, poor scattered porosity, slug, Black carb sh.

5020

FX

LS, cream, gry, FXL, dense, cherty in pts, poor visible porosity, no shows

5040

C

LS, cream, tan, FXL, chalky, poor visible porosity, no shows

5060

5080

6

LS, white, ool, good vuggy oom porosity, no shows

5100

6

5120

FX

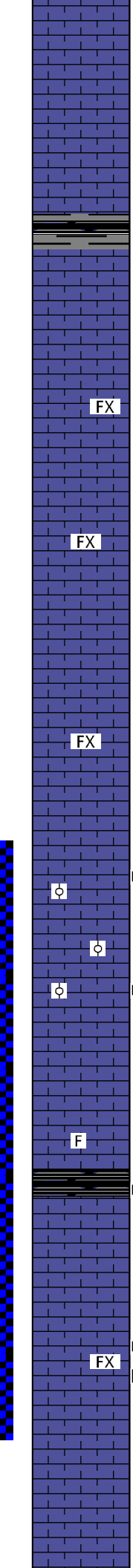
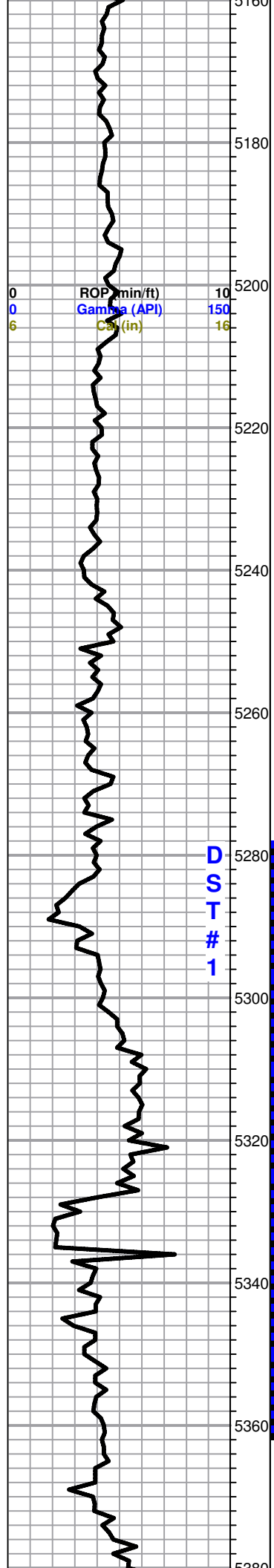
LS, gry, white, FXL, dense, poor visible porosity, no shows

5140

LS, A/A

5160





Sh. gry, black, maroon,

LS, tan, brown, FXL, dense, few foss, poor visible porosity, no shows

LS, gry, FXL, dense, no shows

Marmaton 5250.0 (-2525.0)

LS, brown, tan, FXL, dense, poor visible porosity, no shows

LS, tan, brown, FXL, ool, poorly developed, poor scattered porosity, Lt. Spty flor. NSFO, no odor.

LS, tan, brown, FXL, ool, poorly developed, no visible porosity, Lt. spty flor cut

LS, cream, white, FXL, few foss, Lt. flor. cut, Slug black carb. Sh.

LS, cream, tan, FXL, chalky, Lt, spty, flor. cut, trc. black stain, no odor

LS, tan, FXL, chalky, poor visible porosity, no shows

Total Gas (units)	100
C1 (units)	100
C2 (units)	100
C3 (units)	100
C4 (units)	100

DST # 1 5277'-2363'

30-30-45-45

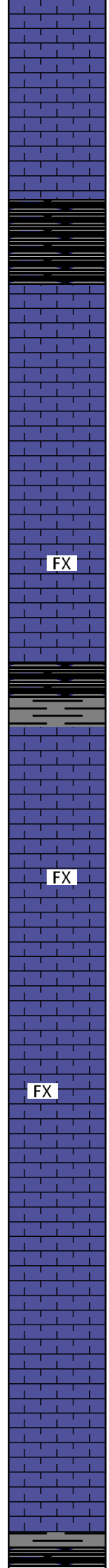
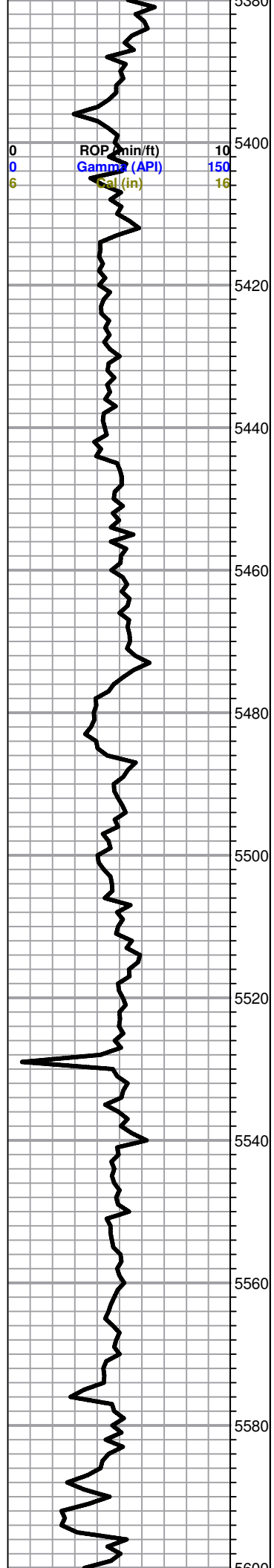
Blow; BOB 4 Min.

Recovery;

1251' MCW

Pressures;

- ISIP 1562 psi
- FSIP 1563 psi
- IFP 117-345 psi
- FFP 363-607 psi
- HSH 2619-2584 psi



LS, A/A

Black carb Sh.

LS, tan, brown, FXL, dense, poor visible porosity, no shows

FX

LS, tan, brown, FXL, slightly chalky, few foss, poor scattered porosity, no shows

Cherokee 5465.0 (-2732.0)

Black carb. Sh.

Sh. black gry, maroon, silty

FX

LS, tan, brown, mottled, FXL, dense, poor visible porosity, no shows, few trc. LS, white, ool, poorly developed

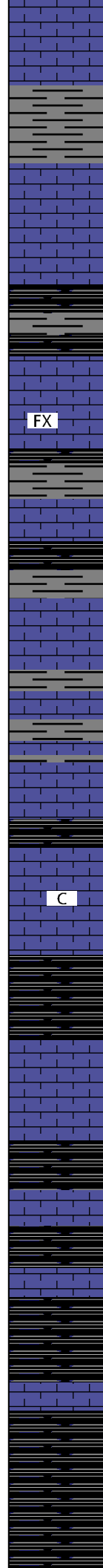
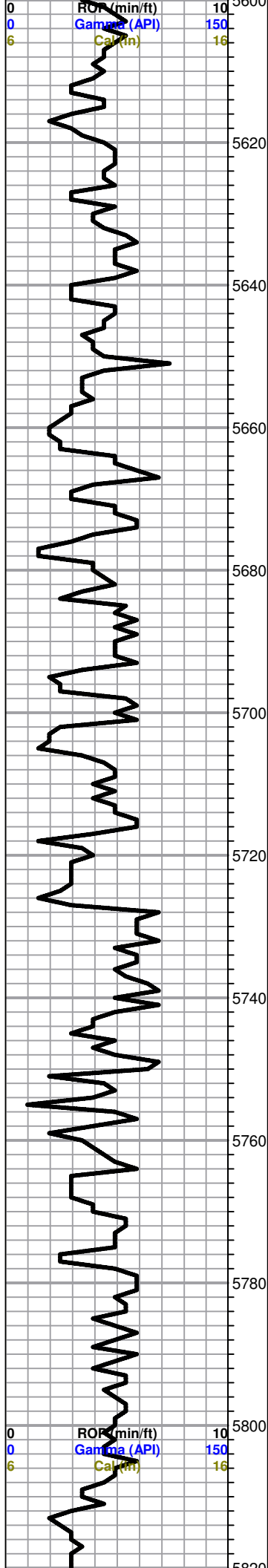
FX

LS, gry, FXL, dense, poor vis. porosity, no shows

LS, gry, FXL, cherty, poor vis. porosity, no shows

Sh. black gry, silty

Total Gas (units)	100
C1 (units)	100
C2 (units)	100
C3 (units)	100
C4 (units)	100



LS, white, FXL, chalky, poor scattered porosity, trc. gry, sh. no shows

Black carb Sh.

FX

LS, tan, cream, brown, mottled, FXL, cherty, poor visible porosity, no shows

Sh. black, gry, silty

C

LS, cream tan, chalky, poor scattered porosity, no shows

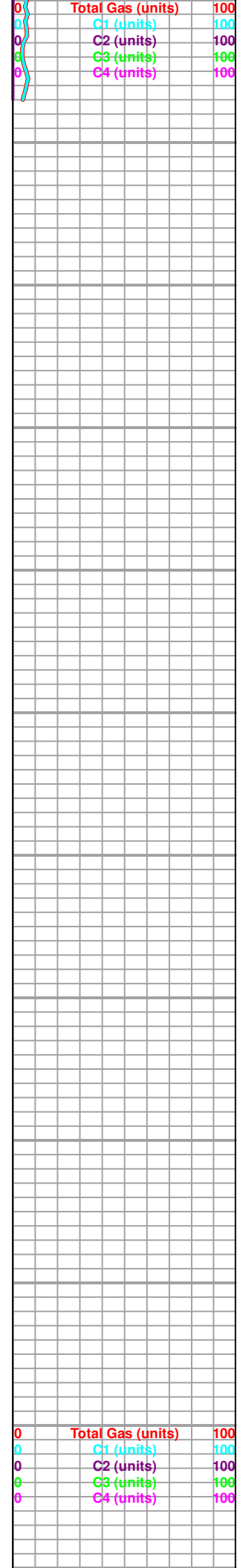
LS, tan, mottled, FXL, cherty, poor visible porosity, no shows

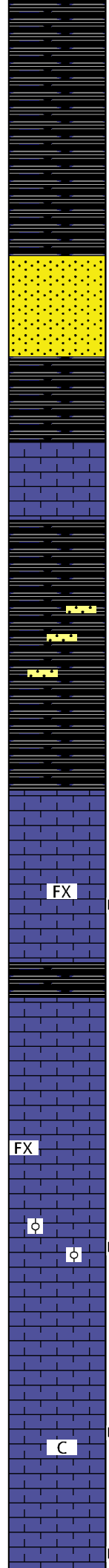
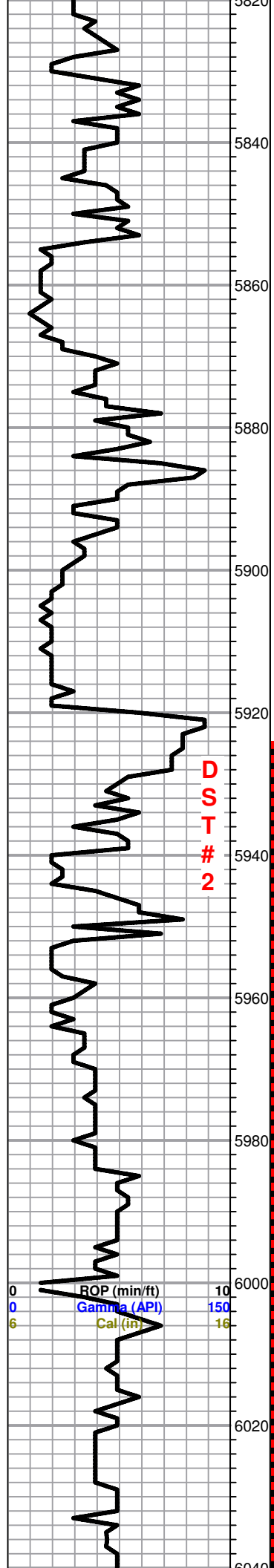
Black carb Sh.

Black carb Sh.
trc. LS, cream, tan, FXL, few foss, poor visible porosity, k no shows

Morrow 5808.0 (-3075.0)

Black carb, sh. few maroon, silty





Sh. black carb, gry, trc. Sd. tan, F. grain, well sorted barren no shows

Morrow Sd. 5854.0 (-3121.0)

Sd, tan, F. grain, well sorted, no shows, no flor. no odor

LS, tan, brown, FXL, cherty, poor scattered porosity, no shows

Sh. black carb, trc. Sd. tan, F. grain, well sorted, no shows, no odor

LS, tan, brown, FXL, cherty, dense, no shows, Trc. black carb. shale, trc. pyrite

DST # 2 packer failure

LS, tan, brown, FXL, dense, poor visible porosity, trc. Sd. white, M. grain, poorly sorted, Lt. flor sppty shows, NSFO, no odor

Sh. black carb

Chester 5958.0 (-3225.0)

LS, tan, cream, FXL, cherty, poor visible porosity, no shows

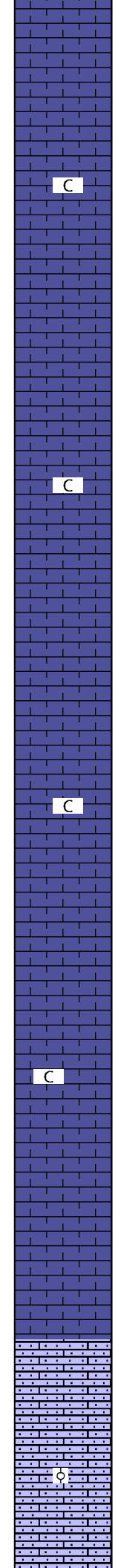
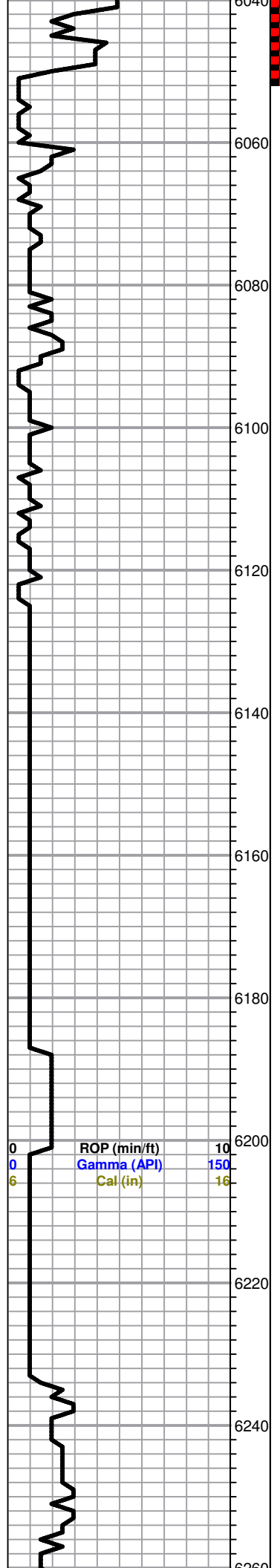
LS, tan, FXL, ool, poor scattered porosity, Lt. flor. cut, NSFO, no odor

0	Total Gas (units)	100
0	C1 (units)	100
0	C2 (units)	100
0	C3 (units)	100
0	C4 (units)	100

LS. tan, brown, FXL, few ool, poor scattered porosity, chalky, Lt. Flor.cut, no odor

LS, tan, FXL, few ool, poorly developed, chalky, Lt. Sppty flor. cut, NSEO, no odor

Continue Drilling with



Spity hor. cut, NSP O, no odor

LS, cream, white, FXL, chalky, no shows

LS, white, FXL, chalky poor visible porosity, few foss, no shows

LS, cream, white, chalky, poor visible porosity, no shows, trc. opaque chert no shows

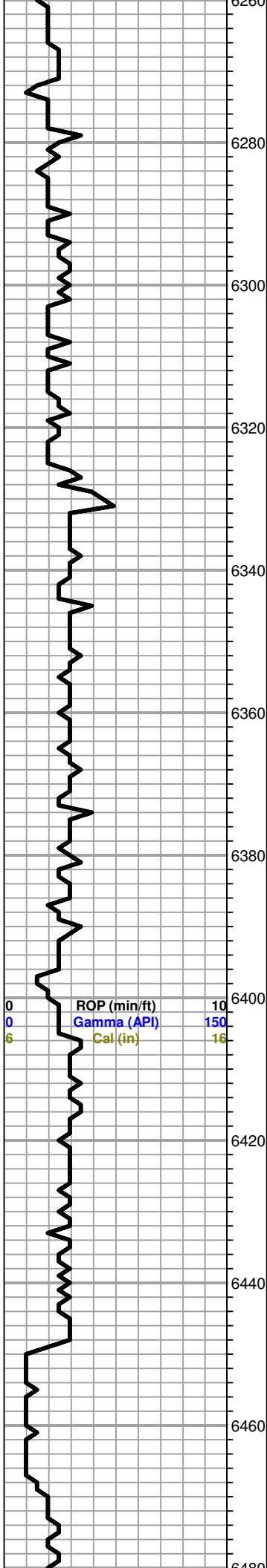
LS, white, gry, FXL, chalky, poor visible porosity, trc. aqua green shale, no shows

LS, tan, mirco ool, fraible no shows, Trc. LS, white, cream, gry, chalky, FXL, no shows

LS, tan, sub micro ool, no shows, no flor. cut

PDC

0	Total Gas (units)	100
0	C1 (units)	100
0	C2 (units)	100
0	C3 (units)	100
0	C4 (units)	100



0 ROP (min/ft) 10
 0 Gamma (API) 150
 6 Cal (in) 16

Ste. Gen 6263.0 (-3530.0)

LS, tan, brown, sub micro ool, fraible no shows

LS, tan, brown, sub micro ool, no shows

LS, tan, brown, maroon, sub micro ool, no shows

LS, tan, cream, FXL, chalky, poor visible porosity, few
 LS, tan, sub micro ool, friable, no shows

St. Louis 6382.0 (-3649.0)

LS, cream, white, chalky, few ool, poorly developed,
 no shows

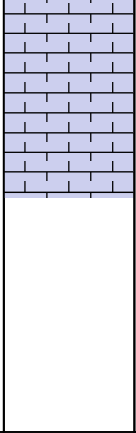
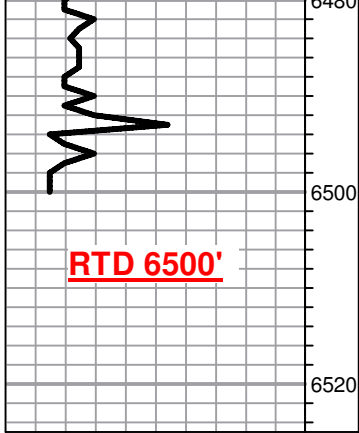
LS, cream, white, ool, chalky, poor scattered porosity,
 no shows, no flor.

LS, cream, white, ool, poorly developed, chalky, poor
 scattered porosity, no shows

LS, cream white, ool, poor scattered porosity, chalky,
 no shows no flor. cut

LS, cream white, ool, chalky, poor scattered porosity,
 no shows

0 Total Gas (units) 100
 0 C1 (units) 100
 0 C2 (units) 100
 0 C3 (units) 100
 0 C4 (units) 100



LS, crm, white, chalky, few ool, poor scattered porosity, no shows.

