

CORNISH

WIRELINE SERVICES, INC.

Box 260

Chanute, Kansas

Phone 431-9308

RADIOACTIVITY LOG

FILING NO.

COMPANY MISSOURI LEAD & ZINC

WELL D. D. GRAY NO. 9

FIELD

COUNTY NEOSHO

STATE KANSAS

LOCATION: NE 1/4 NE 1/4 SE 1/4

SEC 34 TWP 30S RGE 21E

OTHER SERVICES:

PERMANENT DATUM: G.L. ELEV. 842'
 LOG MEASURED FROM: G.L. FT. ABOVE PERM. DATUM
 DRILLING MEASURED FROM: G.L. ELEV. K.B. , D.F. G.L. 842'

DATE 12-4-78

12-4-78

RUN NO. 1 NW

1 NW

TYPE LOG GAMMA RAY

NEUTRON

DEPTH-DRILLER

NEUTRON

DEPTH-LOGGER 263.6'

263.6'

BOTTOM LOGGED INTERVAL 257.8'

262.6'

TOP LOGGED INTERVAL 3'

8'

TYPE FLUID IN HOLE WATER

WATER

SALINITY, PPM CL.

WATER

DENSITY

WATER

LEVEL FULL

WATER

MAX. REC. TEMP., DEG F.

WATER

OPERATING RIG TIME

WATER

RECORDED BY CORNISH J.

WATER

WITNESSED BY ELLISON J.

WATER

BORE-HOLE RECORD

SIZE 4 1/2"

WGT

FROM 0

TO T.D.

CASING RECORD

FROM

TO

TO

TO

FOLD HERE

THIS HEADING AND LOG CONFORMS TO API RP 33

EQUIPMENT DATA

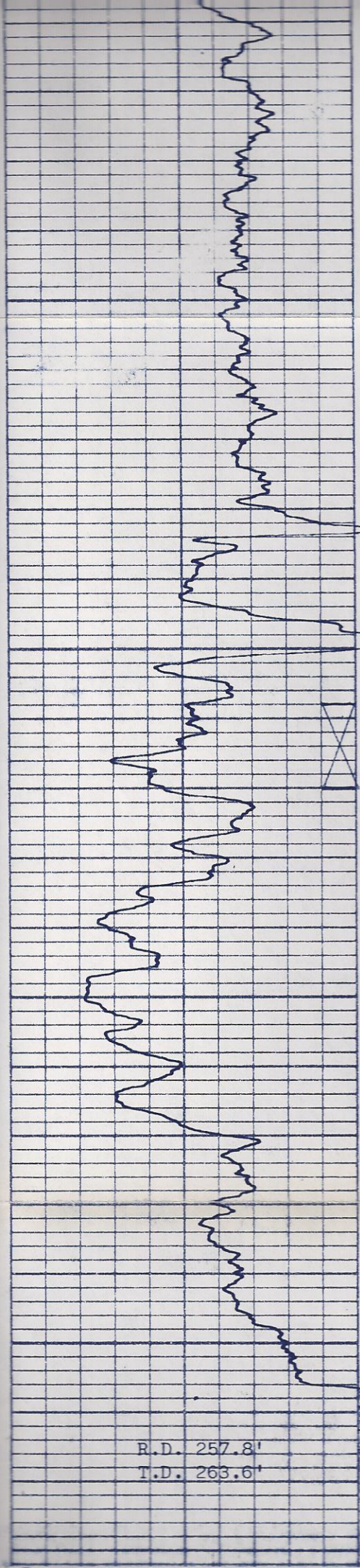
GAMMA RAY			NEUTRON		
RUN NO.	1 NW		RUN NO.	1 NW	
TOOL MODEL NO.	9205		LOG TYPE	NEU/NEU	
DIAMETER	1-11/16"		TOOL MODEL NO.	9205	
DETECTOR MODEL NO.	95SC		DIAMETER	1-11/16"	
TYPE	SCINT.		DETECTOR MODEL NO.	95HE	
LENGTH	1"x4"		TYPE	he	
DISTANCE TO N. SOURCE	8.5'		LENGTH	1"x6"	
			SOURCE MODEL NO.	AC	
			SERIAL NO.	MRC415	
			SPACING	13"	
			TYPE	Am/Be	
			STRENGTH	6.7x10 ⁶	

LOGGING DATA

RUN NO.	GENERAL		GAMMA RAY				NEUTRON				
	FROM	TO	SPEED FT./MIN.	T.C. SEC.	SENS. SETTINGS	ZERO DIV. L OR R	API G.R. UNITS PER LOG DIV.	T.C. SEC.	SENS. SETTINGS	ZERO DIV. L OR R	API N. UNITS PER LOG DIV.
1	262.6'	3'	25	2.5	10-.0	2L	20	2.0	0-.35	4L	

REFERENCE LITERATURE:

REMARKS DRILLING CONTRACTOR: Joy Spradling



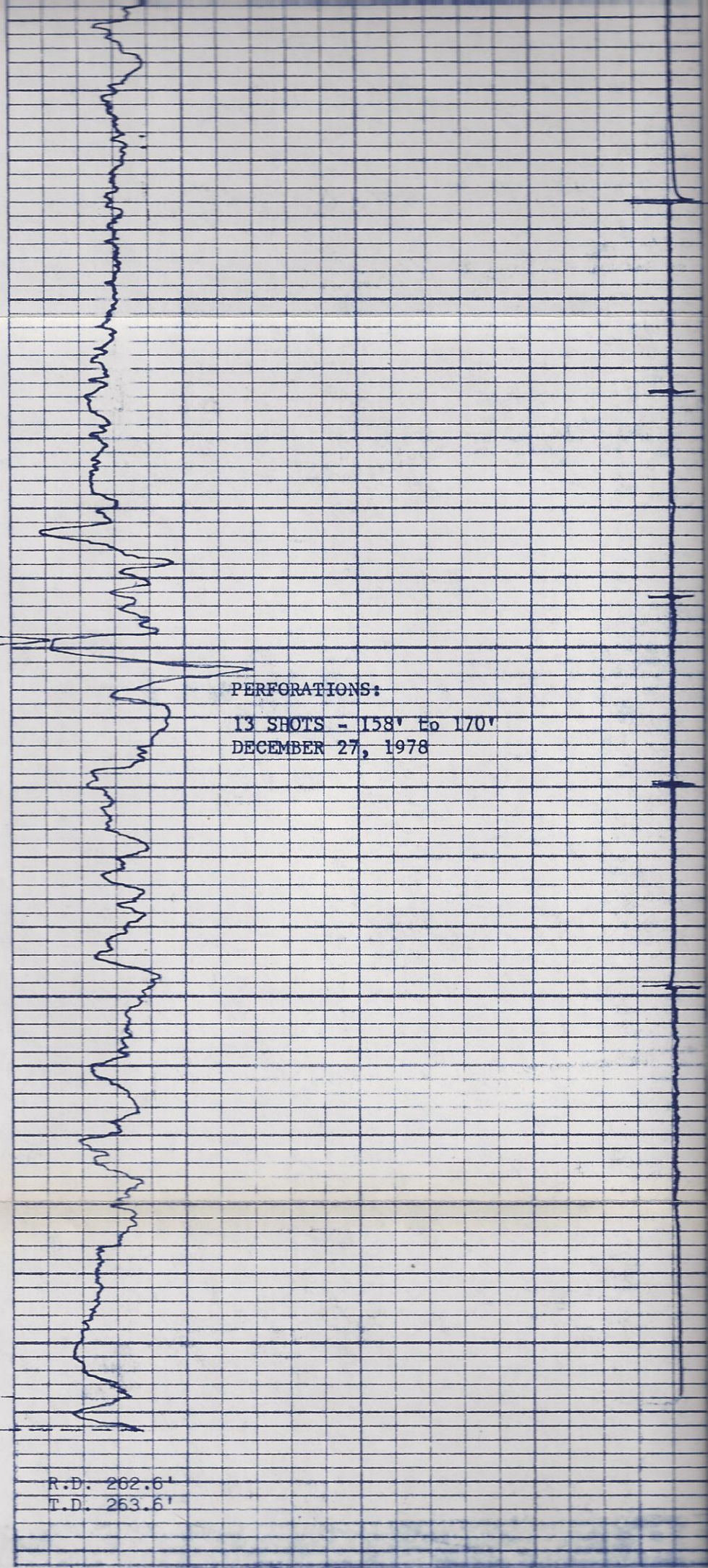
100

150

200

250

R.D. 257.8'
T.D. 263.6'



PERFORATIONS:

13 SHOTS - 158' To 170'
DECEMBER 27, 1978

R.D. 262.6'
T.D. 263.6'