



WIRELINE SERVICES, INC.

Phone 431-9308

Box 260

Chanute, Kansas

RADIOACTIVITY LOG

FILING NO

9

COMPANY HICKORY CREEK OIL COMPANY

WELL SARTIN NO. 14

FIELD

COUNTY NEOSHO

STATE

KANSAS

LOCATION SE 1/4 SE 1/4

OTHER SERVICES:

SEC 27 TWP 30S RGE 21E

PERMANENT DATUM
LOG MEASURED FROM
DRILLING MEASURED FROM

G.L.L. ELEV
G.L.L. FT ABOVE PERM DATUM
G.L.L.

ELEV. K B
D F
G L

DATE RUN NO 2-4-80 1 NW

2-4-80 1 NW

TYPE LOG GAMMA RAY

NEUTRON

DEPTH - DRILLER

DEPTH - LOGGER 294.9'

294.9'

BOTTOM LOGGED INTERVAL 288.11'

293.9'

TOP LOGGED INTERVAL 2.0'

4.5'

TYPE FLUID IN HOLE WATER

WATER

SALINITY PPM CL

DENSITY

LEVEL FULL

FULL

MAX REC. TEMP. DEG. F

OPERATING RIG TIME

RECORDED BY CORNISH, J.

CORNISH, J.

WITNESSED BY KONTIO, D.

KONTIO, D.

RUN NO	BORE-HOLE RECORD		CASING RECORD	
	BIT FROM	TO	SIZE	WGT
			4 1/2	
			0	
				1. D.

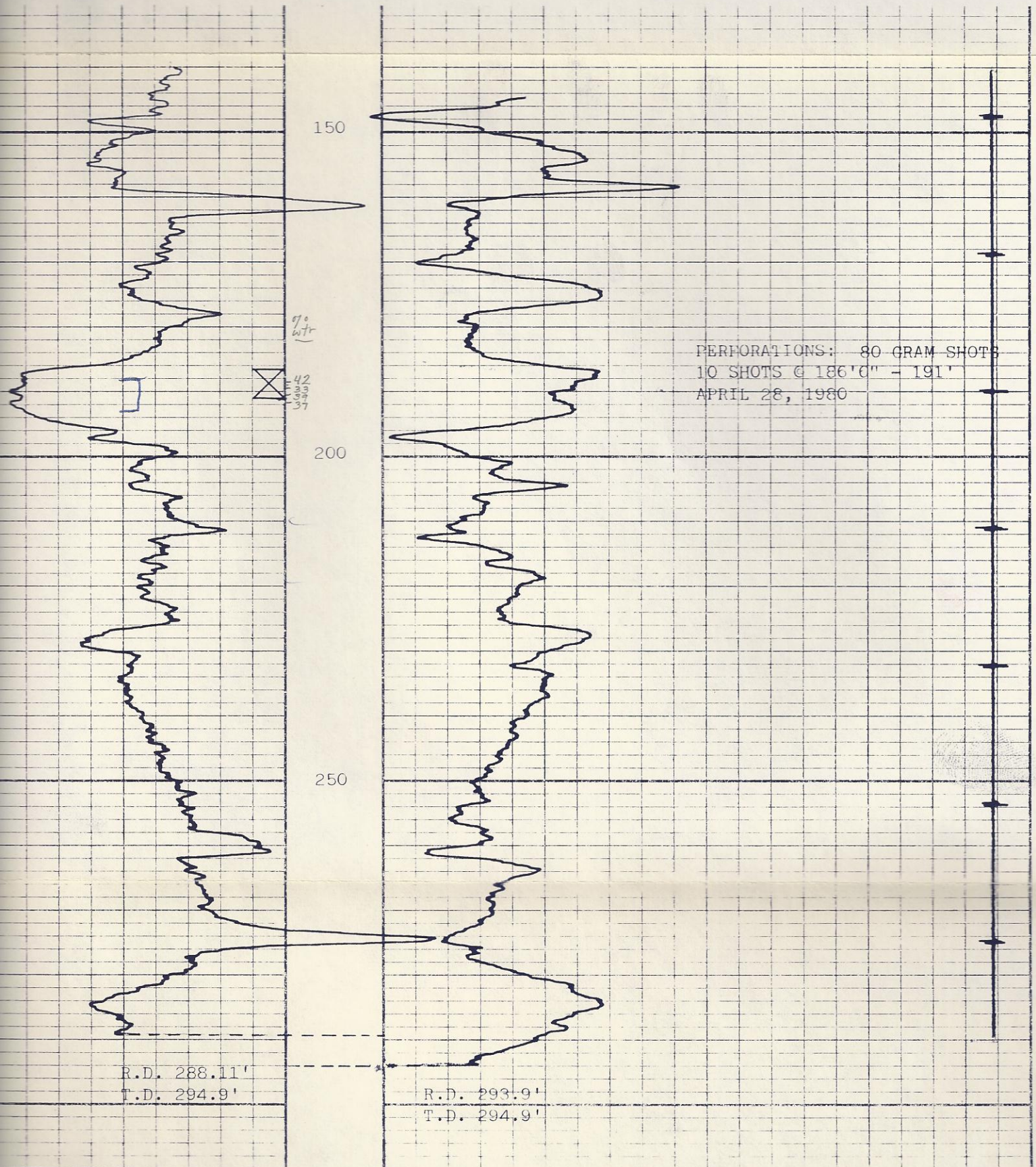
FOLD HERE THIS HEADING AND LOG CONFORMS TO API RP 33

EQUIPMENT DATA			
GAMMA RAY		NEUTRON	
RUN NO	1 NW	RUN NO	1 NW
TOOL MODEL NO	9205	LOG TYPE	NEU/NEU
DIAMETER	1-11/16"	TOOL MODEL NO	9205
DETECTOR MODEL NO	955C	DIAMETER	1-11/16"
TYPE	SCINT.	DETECTOR MODEL NO	955HE
LENGTH	1"x4"	TYPE	He3
DISTANCE TO N. SOURCE	8.5'	LENGTH	1"x6"
		SOURCE MODEL NO	AC
		SERIAL NO	MRC415
HOIST TRUCK NO	3246	SPACING	13"
INSTRUMENT TRUCK NO	3246	TYPE	Am/Be
TOOL SERIAL NO	04	STRENGTH	6.7x10 ⁶

LOGGING DATA											
RUN NO	GENERAL DEPTHS		SPEED FT. MIN	T.C. SEC	GAMMA RAY			T.C. SEC	SENS SETTINGS	NEUTRON	
	FROM	TO			ZERO DIV. L OR R	API GR UNITS PER LOG DIV	ZERO DIV. L OR R			API N UNITS PER LOG DIV	
1	294.9'	2.0'	25	2.5	10-.0	2L	20	2.0	0-.35	4L	

REFERENCE LITERATURE

REMARKS



MARTIN NO. 14

WICKORY CREEK OIL COMPANY

OSHO COUNTY, KANSAS

FEBRUARY 4, 1980