



# Pro-Stake LLC

Oil Field & Construction Site Staking

P.O. Box 2324  
Garden City, Kansas 67846  
Office/Fax: (620) 276-6159  
Cell: (620) 272-1499

burt@pro-stakelc.kscoxmail.com



**001221**  
PLAT NO.

**12017**  
INVOICE NO.

## McElvain Energy

OPERATOR

## Berens #13-13

LEASE NAME

## Trego County, KS

COUNTY

**13**    **12s**    **21w**  
Sec.    Twp.    Rng.

**(Main)=335'FSL-737'FWL = 2285.9'=gr.elev.**  
**(Alt.#1)=335'FSL-687'FWL=2287.9'=gr.elev.**  
**(Alt.#2)=335'FSL-662'FWL=2288.7'=gr.elev.**

SCALE: N/A  
DATE STAKED: July 29<sup>th</sup>, 2014  
MEASURED BY: Ben R.  
DRAWN BY: Norby S.  
AUTHORIZED BY: Matt. M & Cole T.



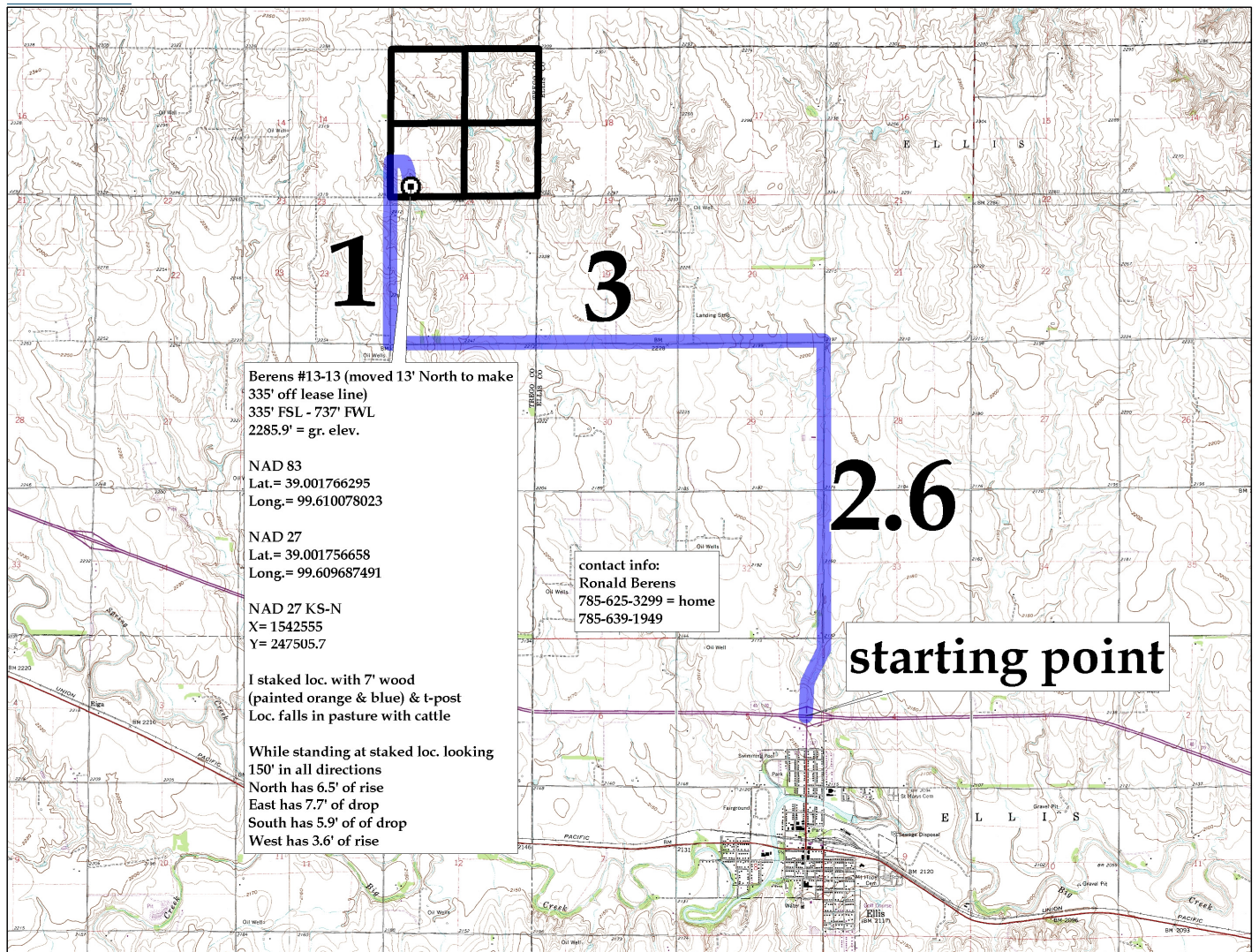
LOCATION SPOT

**Directions:** From the North side of Ellis, KS at the intersection of I-70 and Hwy 247 / Ellis Ave. / 120<sup>th</sup> Ave. – Now go 2.6 miles North on Hwy 247 / Ellis Ave. / 120<sup>th</sup> Ave. – Now go 2 miles West on Locust Grove Rd. & 1 mile West on K Rd. – Now go 1 mile North on 400<sup>th</sup> Ave. to the SW corner of section 13-12s-21w – Now go 0.3 mile North on 400<sup>th</sup> Ave. to ingress stake East into – Now go 0.1 mile East on trail to ingress stake S-SE into  
Now go approx. 960' S-SE through pasture with cattle, into staked location.

**Final ingress must be verified with land owner or Operator.**

*This drawing does not constitute a monumented survey or a land survey plat.*

*This drawing is for construction purposes only.*



Berens #13-13 (moved 13' North to make 335' off lease line)  
335' FSL - 737' FWL  
2285.9' = gr. elev.

NAD 83  
Lat.= 39.001766295  
Long.= 99.610078023

NAD 27  
Lat.= 39.001756658  
Long.= 99.609687491

NAD 27 KS-N  
X= 1542555  
Y= 247505.7

I staked loc. with 7' wood (painted orange & blue) & t-post  
Loc. falls in pasture with cattle

While standing at staked loc. looking 150' in all directions  
North has 6.5' of rise  
East has 7.7' of drop  
South has 5.9' of drop  
West has 3.6' of rise

contact info:  
Ronald Berens  
785-625-3299 = home  
785-639-1949

**starting point**