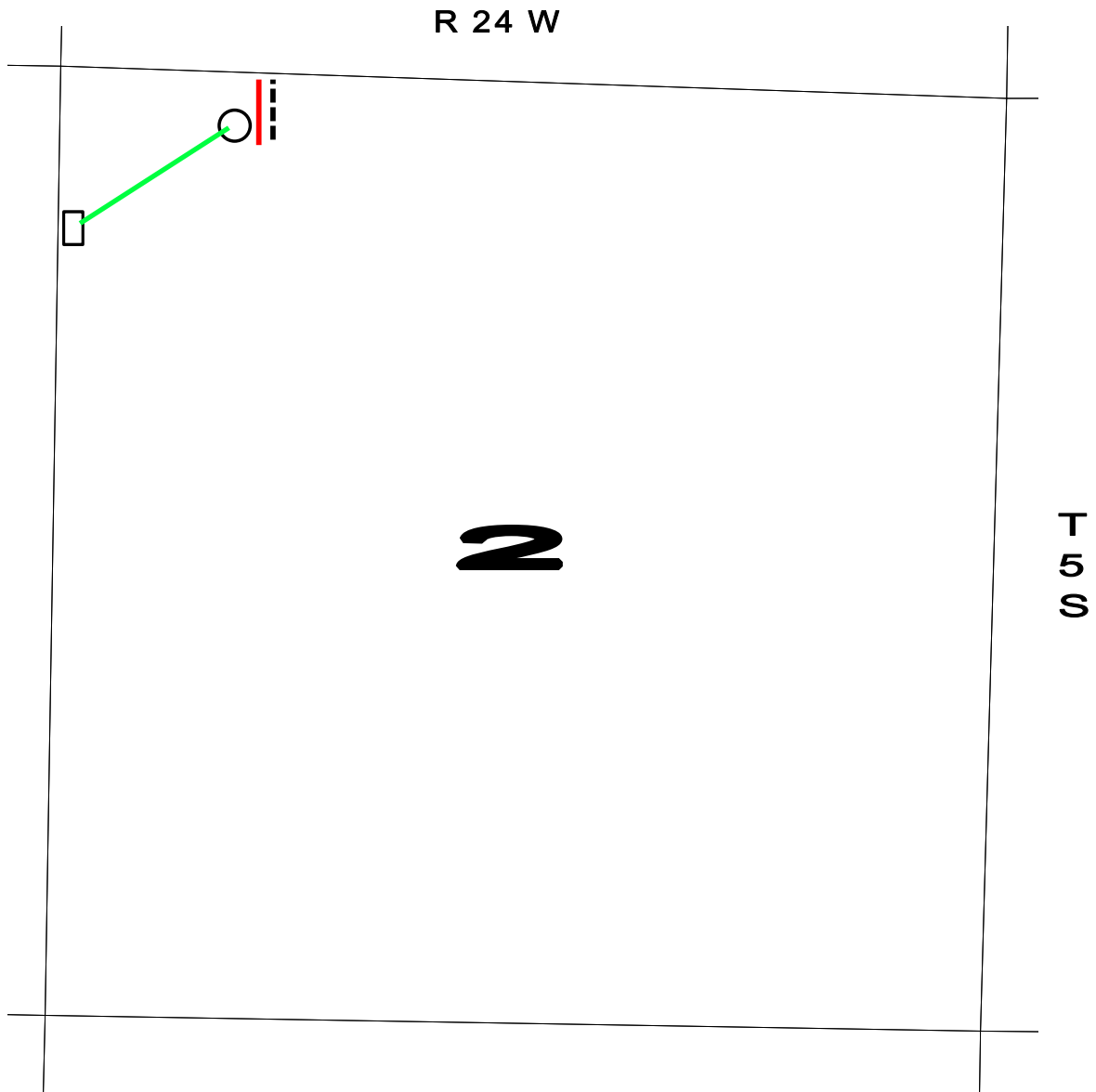


OPERATOR: Samuel Gary Jr. & Associates, Inc. 1515 Wynkoop Street, Suite 700
Denver, Colorado 80202 office: 303-831-4673 ; fax: 303-863-7285

WELL NAME: JMNJ FARM 2-2

LOCATION: 330 FNL / 1000 FWL Sec. 2-5S-24W NORTON COUNTY

SURFACE OWNER: JMNJ FARM, INC.
JAMES C. MAI, PRESIDENT
220 E. KANSAS AVE.
LENORA, KS 67645



- PROPOSED WELL LOCATION
- ESTIMATED LOCATION OF TANK BATTERY

- ESTIMATED LEASE ROAD
- ESTIMATED LOCATION OF FLOWLINES
- ESTIMATED LOCATION OF ELECTRICAL LINES