



Pro-Stake LLC

Oil Field & Construction Site Staking

P.O. Box 2324
Garden City, Kansas 67846
Office/Fax: (620) 276-6159
Cell: (620) 272-1499

burt@pro-stakelc.kscoxmail.com



001022
PLAT NO.

12032
INVOICE NO.

McElvain Energy

OPERATOR

Herman #15-7

LEASE NAME

Graham County, KS
COUNTY

15 10s 22w
Sec. Twp. Rng.

(Main)=2136'FNL-2144'FEL = 2268.9'=gr.elev.
(Alt.#1)=2136'FNL-2094'FEL=2270.8'=gr.elev.

SCALE: N/A
DATE STAKED: July 31th, 2014
MEASURED BY: Ben R.
DRAWN BY: Norby S.
AUTHORIZED BY: Matt. M & Cole T.

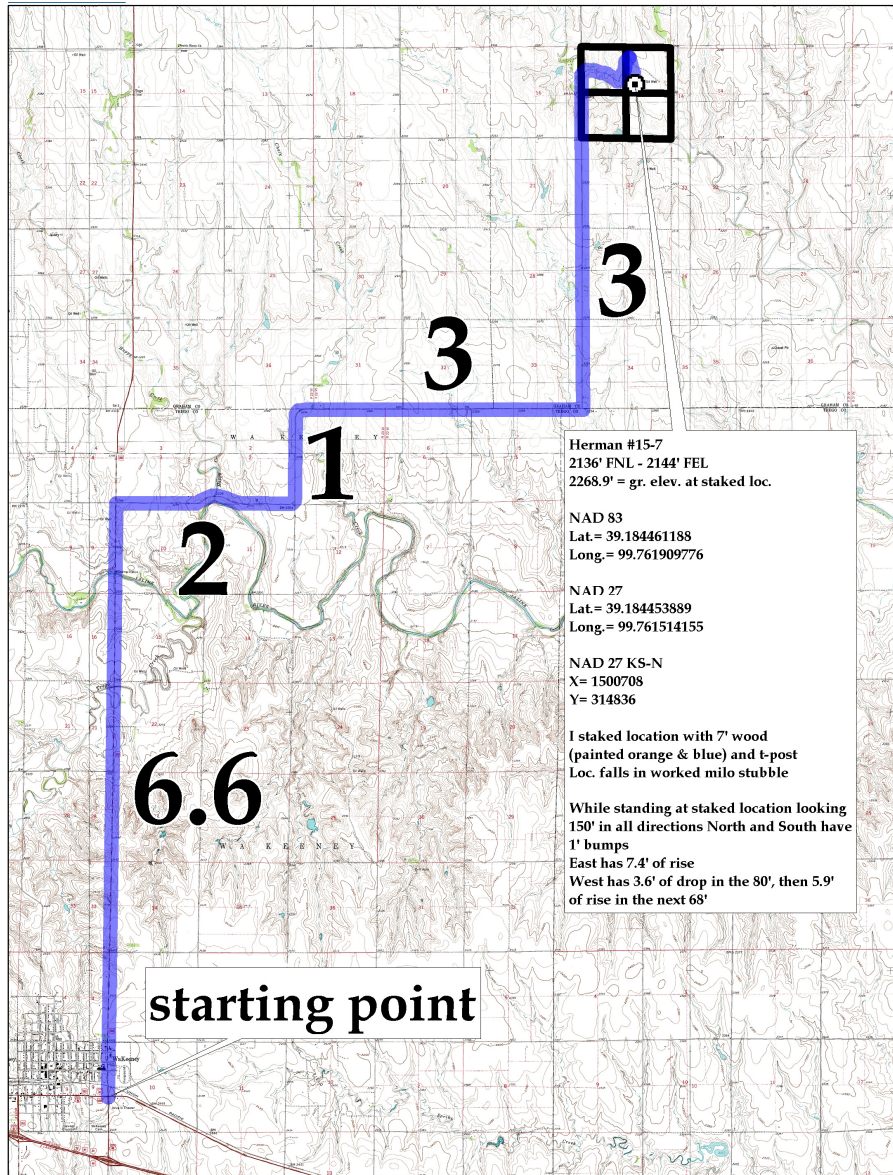


Directions: From the East side of Wakeeney, KS at the intersection of Hwy 283 North and Old Hwy 40 – Now go 6.6 miles North on Hwy 283 – Now go 2 miles East on B Rd. / 422 Rd. – Now go 1 mile North on 280th Ave. – Now go 3 miles East on A Rd. – Now go 3 miles North on 310th Ave. to the SW corner of 15-10s-22w – Now go 0.7 mile North on 310th Ave. to ingress stake East into – Now go 0.8 mile East on trail – Now go approx. 1500' South through worked milo stubble, into staked location.

LOCATION SPOT

Final ingress must be verified with land owner or Operator.

This drawing does not constitute a monumented survey or a land survey plat.
This drawing is for construction purposes only.



Herman #15-7
2136' FNL - 2144' FEL
2268.9' = gr. elev. at staked loc.

NAD 83
Lat.= 39.184461188
Long.= 99.761909776

NAD 27
Lat.= 39.184453889
Long.= 99.761514155

NAD 27 KS-N
X= 1500708
Y= 314836

I staked location with 7' wood (painted orange & blue) and t-post
Loc. falls in worked milo stubble

While standing at staked location looking 150' in all directions North and South have 1' bumps
East has 7.4' of rise
West has 3.6' of drop in the 80', then 5.9' of rise in the next 68'