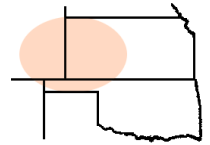


Pro-Stake LLC

Oil Field & Construction Site Staking

P.O. Box 2324
 Garden City, Kansas 67846
 Office/Fax: (620) 276-6159
 Cell: (620) 272-1499

burt@pro-stakelc.kscoxmail.com



350922bar
 PLAT NO.

12015
 INVOICE NO.

McElvain Energy

OPERATOR

Graham County, KS

COUNTY

35 **9s** **22w**
 Sec. Twp. Rng.

Brassfield #35-9

LEASE NAME

1584' FSL - 342' FEL

LOCATION SPOT

SCALE: **1" = 1000'**

DATE STAKED: **July 29th, 2014**

MEASURED BY: **Ben R.**

DRAWN BY: **Norby S.**

AUTHORIZED BY: **Matt M. & Cole T.**

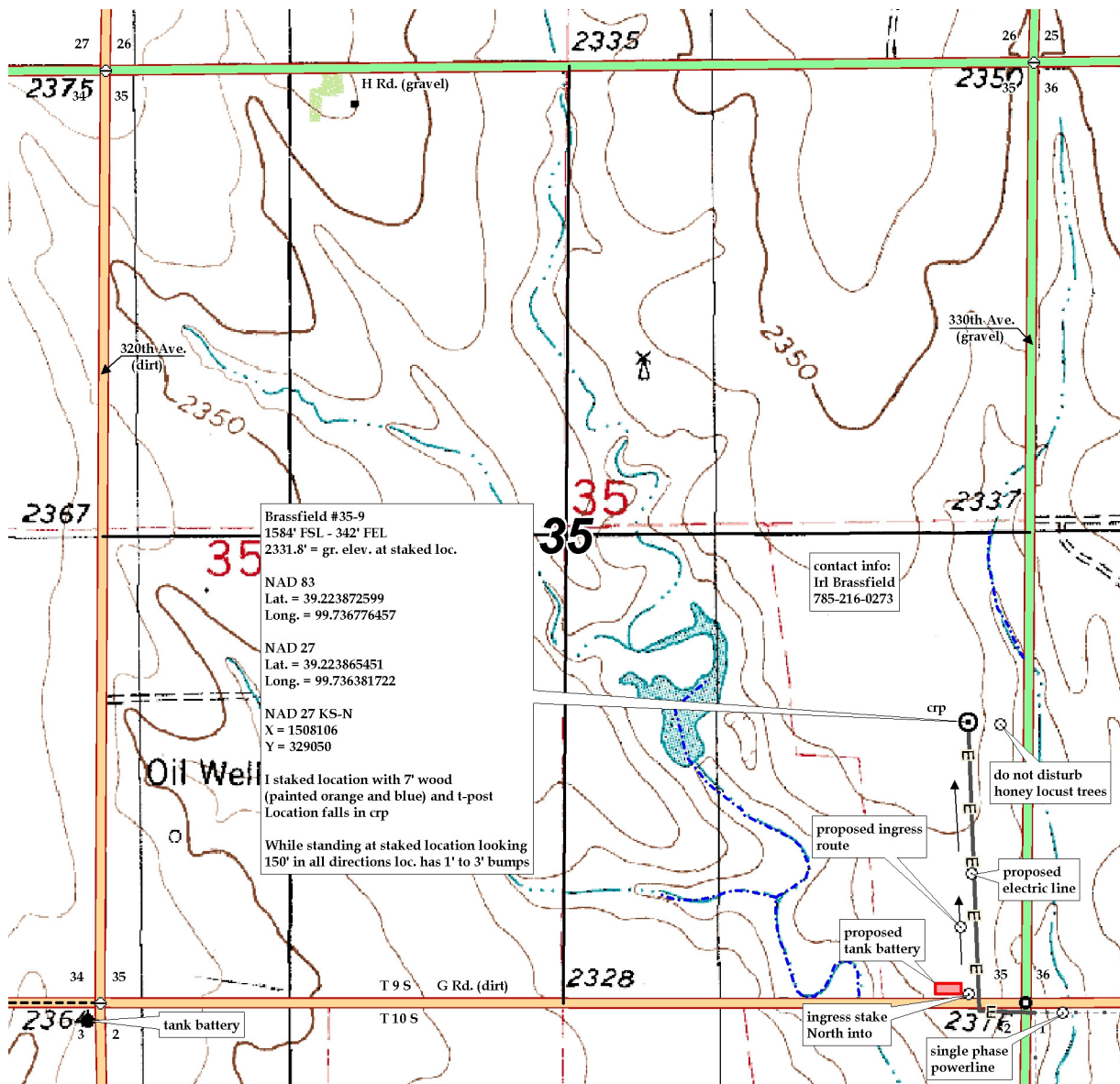
GR. ELEVATION: **2331.8'**



Directions: From the center of Hill City, KS at the intersection of Hwy 283 and Hwy 24 – Now go 9.4 miles South on Hwy 283 – Now go 5.9 miles East on H Rd. to the NW corner of section 35-9s-22w – Now go 1 mile South on 320th Ave. – Now go 0.9 mile East on G Rd. to ingress stake North into – Now go 1584' North through crp, into staked location.

Final ingress must be verified with land owner Operator.

This drawing does not constitute a monumented survey or a land survey plat This drawing is for construction purposes only



Brassfield #35-9
 1584' FSL - 342' FEL
 2331.8' = gr. elev. at staked loc.
 NAD 83
 Lat. = 39.223872599
 Long. = 99.736776457
 NAD 27
 Lat. = 39.223865451
 Long. = 99.736381722
 NAD 27 KS-N
 X = 1508106
 Y = 329050
 I staked location with 7' wood (painted orange and blue) and t-post
 Location falls in crp
 While standing at staked location looking 150° in all directions loc. has 1' to 3' bumps

contact info:
 Irl Brassfield
 785-216-0273