

*Glenn*  
**Glenn Consulting LLC**  
 A/E/C-15-065-24055-0000

GEOLOGIST'S REPORT  
 DRILLING TIME AND SAMPLE LOG

OPERATOR **Bowman Oil Company**  
 LEASE **SMITH** WELL NO. **8**  
 FIELD **COOPER**  
 LOCATION **530' ENL & 1900' FNL**  
 SEC. **5** TWP. **10S** RGE. **21W**  
 COUNTY **GRAHAM** STATE **KANSAS**

CONTRACTOR **SKYTOP DRILLING LLC #3708**  
 COMPLETION DATE **8-2-2017**  
 RIG **518** COMPANY **SKYTOP**  
 SURFACE SWELL FROM **3200** TO **710**  
 DRILLING TIME KEPT FROM **3200** TO **710**  
 SURFACES EXAMINED FROM **3200** TO **710**  
 GEOLOGICAL SUPERVISION FROM **3200** TO **710**  
 WELD UP **3108** THE WELD CHEMIST: **BRISAK**

MEASUREMENTS ARE ALL FROM **KELF BUSHING**  
 CASING RECORD  
 SURFACE **8 1/8" @ 217'**  
 165353 **3708** **27041**  
 PRODUCTION **5% @ 9114'**  
**57535**

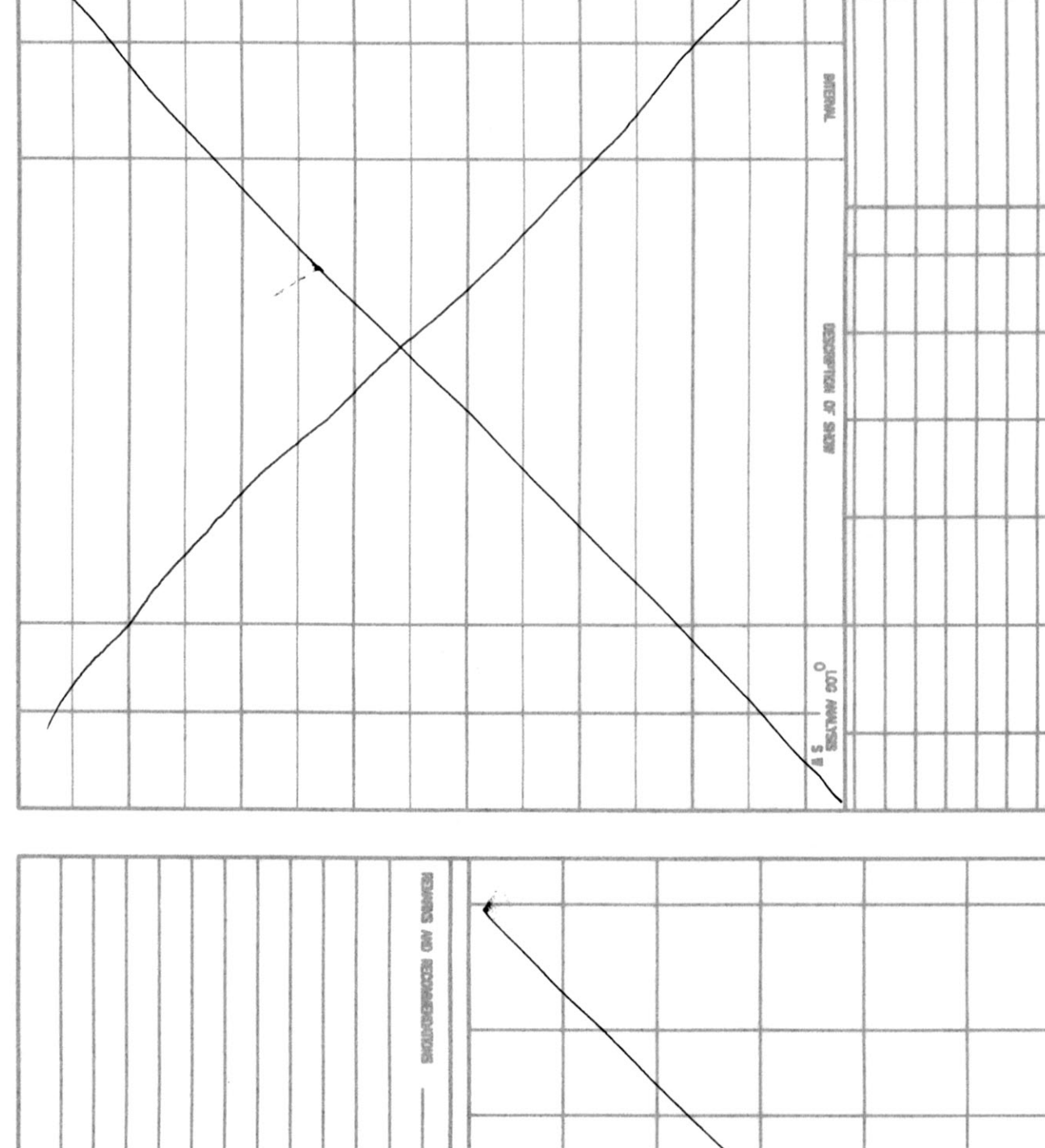
ELECTRICAL SUPPLIES  
 DUAL INDUCTION  
 DENSITY - NEUTRON  
 MICARD

FORMATION	TOP LOG	DEPTH	THICKNESS	STRUC.	COMP.
ANHYDRITE	1772 (522)	1763 (530)	9	0	0
B/ANHYDRITE	1801 (483)	1792 (500)	9	0	0
TOPEKA	3265 (772)	3247 (777)	18	0	0
HEBNER	3507 (1174)	3471 (1178)	36	-3	0
LANZING	3792 (1444)	3771 (1443)	21	-2	0
B/KANSAS CITY	3796 (1443)	3786 (1443)	9	-2	0
ARBUCKLE	3893 (1543)	3886 (1543)	7	+5	0

REFERENCE WELL FOR STRATIGRAPHIC CORRELATION  
**SMITH #7 530' ENL & 1900' FNL SEC 5-10S-21W**  
**GRAHAM COUNTY KANSAS**

DRILL STEM TESTS

DATE	DEPTH	NO	TIME	DEPTH	NO	TIME
7-26-14	500	1	12 1/2	222	3 1/2	
7-27-14	222	2	7 1/2	552	31 1/2	222
7-28-14	1498					222
7-29-14	2318					222
7-30-14	2875					222
7-31-14	3720					222
8-1-14	3720					222
8-2-14	3715					222



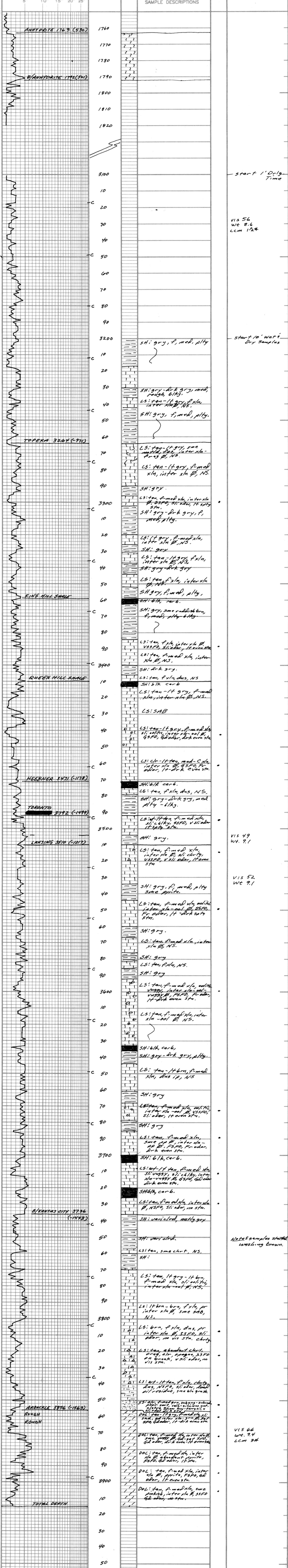
DRILL STEM TESTS

DATE	DEPTH	NO	TIME	DEPTH	NO	TIME
7-26-14	500	1	12 1/2	222	3 1/2	
7-27-14	222	2	7 1/2	552	31 1/2	222
7-28-14	1498					222
7-29-14	2318					222
7-30-14	2875					222
7-31-14	3720					222
8-1-14	3720					222
8-2-14	3715					222

7514

LEGEND

--	--	--	--	--	--	--	--	--



CONTRACTOR <b>SKYTOP DRILLING LLC</b>	LOCATION <b>530' ENL &amp; 1900' FNL</b>
LEASE <b>SMITH</b>	SEC. <b>5</b> TWP. <b>10S</b> RGE. <b>21W</b>
ELEVATION <b>2295; KB 2293</b>	COUNTY <b>GRAHAM</b> STATE <b>KANSAS</b>