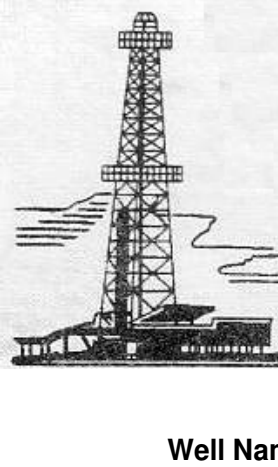


WELLSITE GEOLOGIST'S REPORT

VERNON C. SCHRAG
CONSULTANT GEOLOGIST



Scale 1:240 (5"=100') Imperial

Well Name: **FAGERQUIST STEELE UNIT #1-22**
 Location: **NW SW NW SW SEC. 22-18S-30W**
 Licence Number: **API: 15-101-22512**
 Spud Date: **June 01, 2014**
 Surface Coordinates: **1693' FSL & 140' FWL**

Region: **Lane Co., KS**
 Drilling Completed: **June 11, 2014**

Bottom Hole Coordinates:
 Ground Elevation (ft): **2876'** K.B. Elevation (ft): **2883'**
 Logged Interval (ft): **3800'** To: **RTD** Total Depth (ft): **4613'**
 Formation: **D&A Mississippi**
 Type of Drilling Fluid: **Chemical Premix (Displaced)**

Printed by MUD.LOG from WellSight Systems 1-800-447-1534 www.WellSight.com

OPERATOR:

Company: **Larson Engineering Inc.**
 Address: **562 West State Road 4**
Olmitz, KS 67564-8561

DRILLING CONTRACTOR:

H. D. Drilling, LLC, Rig #3 (Co. Tools)

DP 4.5" XH (16.6#); DC 6.25" x 2.25" x 556', Kelly 40.30', Tool Joint 5.5"; Bit: JZ-HA20-Q, 7-7/8", standard jets 15-15-15; rpm 80, WOB 35k; Kelly Bushing 7' above ground level; LeWayne "Lew" Tresner (tool pusher).

CASING:

Set 8-5/8" casing at 263'

CIRCULATION SYSTEM:

Continental EMSCO D-300, duplex, 6 x 14, 60-62 spm, Chemical, premix, earth pits, Morgan Mud, Inc., Cade Lines.

OPEN HOLE LOGS:

DN, DI (SP) (Run-1); ML (Run-2); No Sonic; 5" detail LTD-3600; 2" DI to surface casing; LogTech-Pioneer Wireline, Hays, KS, Jerrod Long, Log total depth (4612') was one foot short to rotary total depth (4613').

DRILL STEM TEST #1:

LKC (K-zone): Interval: 4230-4242 (12'); Blow: lost about 20' mud when setting packers, 8" IFP, no RB, no blow FFP, no RB; Times: 5-15-30-60; Recovery: 200' mud (no show); Pressures: HP: 2109-2002, SIP: 770-778, FP: 134-120, 127-128; BHT: 120 F; Trilobite Testing, Inc., Scott City, KS, Bradley "Walt" Walter.

DRILL STEM TEST #2:

LKC (L-zone): Interval: 4267-4286 (19'); Blow: weak 1/2" IFP, no RB, no blow FFP, no RB; Times: 5-15-30; Recovery: 10' mud (100%M); Pressures: HP: 2135-2134, SIP: 42-40, FP: 39-39, 38-40; BHT: 116 F; Trilobite Testing, Inc., Scott City, KS, Cornelio "Corndog" Landa III.

DRILL STEM TEST #3:

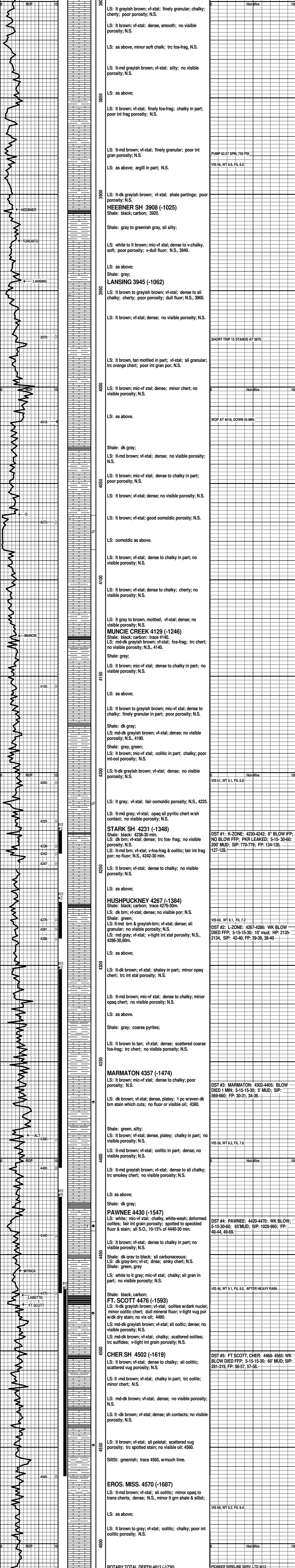
Pleasanton, Marmaton: Interval: 4302-4405 (103'); Blow: 1/2" died 1 min IFP, no RB, no blow FFP, no RB; Times: 5-15-30; Recovery: 5' mud (100%M); Pressures: HP: 2199-2183, SIP: 569-660, FP: 30-31, 34-36; BHT: 116 F; Trilobite Testing, Inc., Scott City, KS, Cornelio "Corndog" Landa III.

DRILL STEM TEST #4:

Pawnee, Myrick Station: Interval: 4420-4470 (50'); Blow: weak inc 1.25" IFP, no RB, weak incr 1/2" FFP, no RB; Times: 5-15-30; Recovery: 65' mud (100%M); Pressures: HP: 2231-2227, SIP: 1020-995, FP: 40-44, 49-69; BHT: 119 F; Trilobite Testing, Inc., Scott City, KS, Cornelio "Corndog" Landa III.

DRILL STEM TEST #5:

Ft. Scott, Cherokee: Interval: 4468-4565 (97'); Blow: weak inc 2" IFP, no RB, weak surf blow died 3 min FFP; Times: 5-15-30; Recovery: 60' mud (100%M); Pressures: HP: 2293-2229, SIP: 281-319, FP: 56-57, 57-58; BHT: 116 F; Trilobite Testing, Inc., Scott City, KS, Cornelio "Corndog" Landa III.



RTD 4:15 pm 06/10/2014