



**TRILOBITE TESTING, INC**

# DRILL STEM TEST REPORT

Shakespeare Oil Co. Inc.

**S3-13s-32w Logan, KS**

202 W Main  
Salem, IL 62881

**Andersen #1-3**

Job Ticket: 56674

**DST#: 4**

ATTN: Tim Priest

Test Start: 2014.08.14 @ 03:55:00

## GENERAL INFORMATION:

Formation: **Marmaton C**

Deviated: No Whipstock: ft (KB)

Time Tool Opened: 06:01:40

Time Test Ended: 11:28:09

Test Type: Conventional Bottom Hole (Reset)

Tester: Justin Harris

Unit No: 61

**Interval: 4427.00 ft (KB) To 4460.00 ft (KB) (TVD)**

Reference Elevations: 3045.00 ft (KB)

Total Depth: 4460.00 ft (KB) (TVD)

3035.00 ft (CF)

Hole Diameter: 7.88 inches Hole Condition: Poor

KB to GR/CF: 10.00 ft

**Serial #: 8357 Inside**

Press@RunDepth: 31.65 psig @ 4457.00 ft (KB)

Capacity: 8000.00 psig

Start Date: 2014.08.14

End Date:

2014.08.14

Last Calib.: 2014.08.14

Start Time: 03:55:02

End Time:

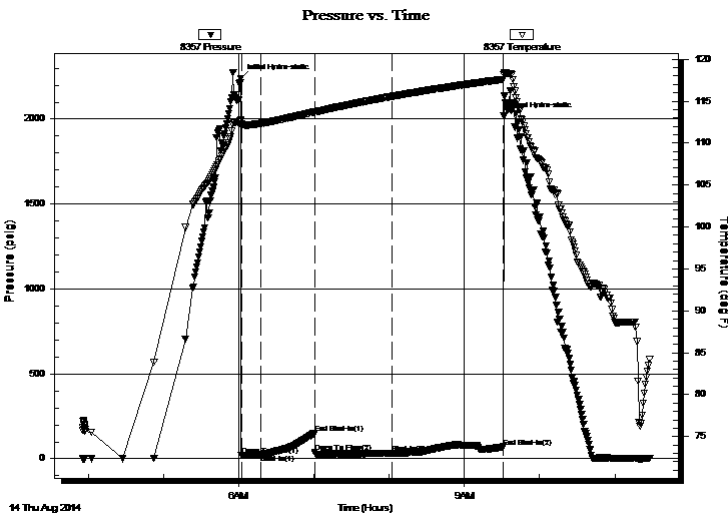
11:28:10

Time On Btm: 2014.08.14 @ 06:01:30

Time Off Btm: 2014.08.14 @ 09:31:20

**TEST COMMENT:** 30: Start 1/2 blow died to Weak Surface blow  
30: No Return.  
30: Weak surface blow .  
30: No Return.

## PRESSURE SUMMARY



Time (Min.)	Pressure (psig)	Temp (deg F)	Annotation
0	2237.33	112.78	Initial Hydro-static
1	21.95	112.14	Open To Flow (1)
16	27.16	112.34	Shut-In(1)
59	150.64	113.72	End Shut-In(1)
60	39.58	113.69	Open To Flow (2)
121	31.65	115.56	Shut-In(2)
210	70.30	117.59	End Shut-In(2)
210	2016.47	118.14	Final Hydro-static

## Recovery

Length (ft)	Description	Volume (bbl)
63.00	gocm 5%g 35%o 60%m	0.31

\* Recovery from multiple tests

## Gas Rates

	Choke (inches)	Pressure (psig)	Gas Rate (Mcf/d)



**TRILOBITE  
TESTING, INC**

# DRILL STEM TEST REPORT

**FLUID SUMMARY**

Shakespeare Oil Co. Inc.

**S3-13s-32w Logan, KS**

202 W Main  
Salem, IL 62881

**Andersen #1-3**

Job Ticket: 56674

**DST#: 4**

ATTN: Tim Priest

Test Start: 2014.08.14 @ 03:55:00

## Mud and Cushion Information

Mud Type: Gel Chem

Cushion Type:

Oil API:

0 deg API

Mud Weight: 9.00 lb/gal

Cushion Length:

ft

Water Salinity:

0 ppm

Viscosity: 60.00 sec/qt

Cushion Volume:

bbbl

Water Loss: 8.39 in<sup>3</sup>

Gas Cushion Type:

Resistivity: ohm.m

Gas Cushion Pressure:

psig

Salinity: 3200.00 ppm

Filter Cake: 1.00 inches

## Recovery Information

Recovery Table

Length ft	Description	Volume bbl
63.00	gocm 5%g 35%o 60%m	0.310

Total Length: 63.00 ft      Total Volume: 0.310 bbl

Num Fluid Samples: 0

Num Gas Bombs: 0

Serial #:

Laboratory Name:

Laboratory Location:

Recovery Comments:

