



SHAKESPEARE OIL COMPANY, INC.

CARSON #4-25

2530' FNL & 2180' FWL of Section 25-T16S-R34W
SCOTT COUNTY, KANSAS
API#15-171-21084-00-00

Geologist's Report

WellSight Systems

Scale 1:240 (5"=100') Imperial
Measured Depth Log

Well Name: Carson #4-25
API: 15-171-21084-00-00
Location: 2530' FNL & 2180' FWL of Section 25-T16S-R34W
License Number: KLN# 7311
Spud Date: 8/25/2014
Surface Coordinates: 2530' FNL & 2180' FWL (SW SE SE NW)
Bottom Hole Coordinates: Vertical Test
Ground Elevation (ft): 3094
Logged Interval (ft): RTD
Formation: Mississippi
Type of Drilling Fluid: Chemical (Displacement complete @ 3518')

Region: Scott County, Kansas
Drilling Completed: Pence East Field 5 1/2"

Printed by MUD.LOG from WellSight Systems 1-800-447-1534 www.WellSight.com

Operator

Company: Shakespeare Oil Company, Inc. KLN# 7311
Address: 202 W Main
Salem, IL 62881

Geologist

Name: Richard S.(Steve) Davis Jr.
Company: Petroleum Geologist
Address: 212 N. Market, Suite 268
Wichita, Kansas 67202

FORMATION TOPS

Formation	Sample	E-Log	KB	3106	Formation	Sample	E-Log	Datum
			Datum	Datum				
Anhydrite	2432	2432	+674	Hushpuckney	4344	4342	-1236	
B/Anhydrite	2453	2452	+654	Lansing L	4352	4352	-1246	
Topeka	3801	3802	-696	BKC	4387	4388	-1282	
Heebner	3976	3974	-868	Marmaton	4438	4436	-1330	
Toronto	3995	3993	-887	Pawnee	4522	4521	-1415	
Lansing	4018	4016	-910	Fort Scott	4573	4572	-1466	
Lansing D	4135	4130	-1024	Cherokee Sh	4603	4600	-1494	
Muncie Creek	4202	4200	-1094	Johnson	4646	4643	-1537	
Lansing H	4212	4210	-1104	Mississippi	4781	4779	-1673	
Lansing I	4242	4240	-1134	Total Depth	4880	4876	-1770	
Lansing J	4275	4277	-1171					
Stark	4299	4297	-1191					
Lansing K	4307	4307	-1201					

DAILY PENETRATION: 7:00 AM

Date	Depth	Activity
08/25/14	0	MIRU & Spud
08/26	265	WOC
08/27	1532	Drlg
08/28	2470	Drlg
08/29	3127	Drlg
08/30	3614	Drlg
08/31	4110	Drlg
09/01	4465	DST #1
09/02	4495	Drlg
09/03	4791	Drlg
09/04	4880	Run 5 1/2"

CONTRACTOR:

Southwind Drilling, Rig #70

Toolpusher: Sam Staggs

MUD:

Mud Co (displacement complete @ 3518')

Tony Maestas

DRILL STEM TESTING: Trilobite Testing Inc.

Mike Roberts

ELECTRIC LOG: Weatherford

Jeff Randle

(DIL, CDL/CNL, PE & MEL)

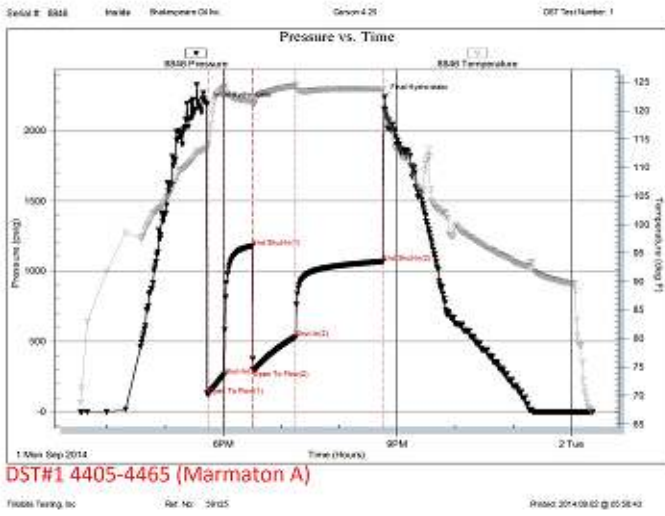
CASING RECORD:

Surface: 8 5/8" @ 265' w/190 sx

Production: 5 1/2"

BIT RECORD:

Bit No./Size	Make/Type	Out	Ftg	Hrs
#1/ 12 1/4"	RTC/RT	265	265	2 1/2
#2/ 7 7/8"	RTC/S52P	4880	4615	141 3/4



Rock Types

LITHOLOGY

- Anhy
- Bent
- Brec
- Cht
- Clyst

- Coal
- Congl
- Dol
- Gyp
- Igne
- Lmst

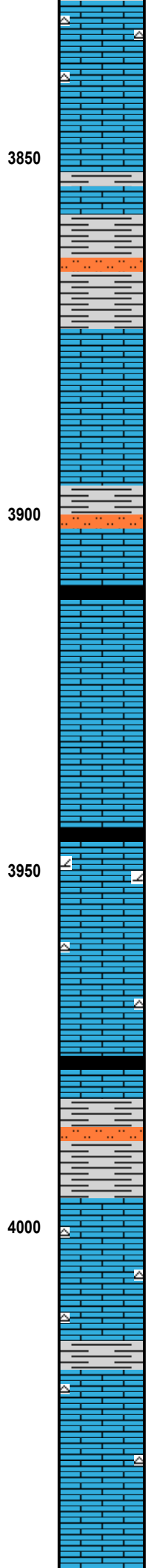
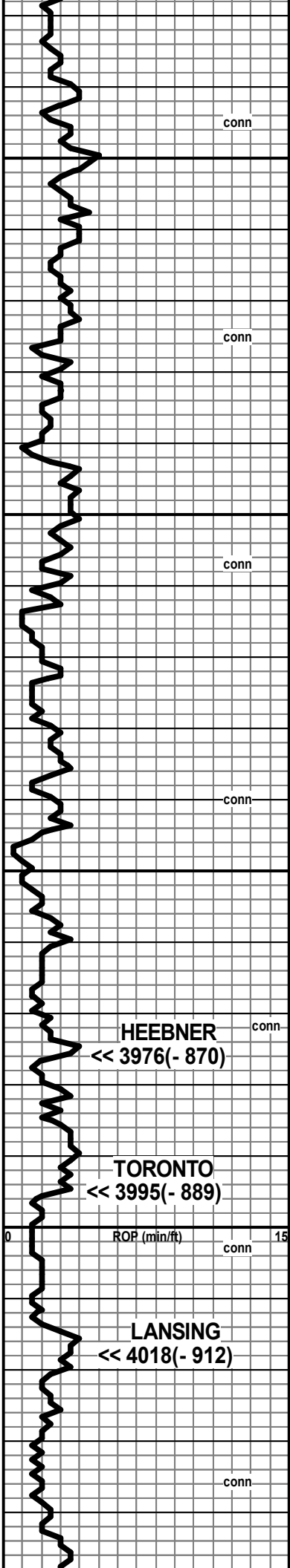
- Meta
- Mrlst
- Salt
- Shale
- Shcol
- Shgy

- Slst
- Ss
- Till

- Spotted
- Ques
- Dead

- OIL SHOW**
- Even

ROP (min/ft) ROP (min/ft)	Depth	Lithology	Geological Descriptions	Remarks
	<p>3750</p> <p>3800</p>	<p>Shows</p>	<p>LS, gray-tan, fxln, chky, ool & foss, P ipart por, sft, NS</p> <p>Shale, black, gray & mar</p> <p>LS, crm-gray, f-vfxln, foss, chky, P ixln por, sft, NS</p> <p>LS, crm-tan, fxln, chky, foss-ool, P ipart por, NS</p>	<p>Vis 45 Wt 8.7 Fil 8.0 PH 10.5 Chl 3,700 LCM 2# 8/30/14 @ 3646'</p>
<p>TOPEKA << 3801(- 695)</p>				



LS, gray-tan, f-vfxln, sub ool-foss, NV por, dense + Cht, white-crm, sltly foss

LS, gray-tan, vf-micln, sub ool-foss, NV por, dense

LS, gray-brn, f-vfxln, foss & ool, NV por, hd

Shale, black-dk gray & Slstst, gray

LS, gray-tan, f-vfxln, chky-arg, foss, NV por, mhd

LS, lt gray-tan, f-vfxln, chky IP, foss, rr P pp por + LS, tan-gray, vf-micln, NV por, dense

Shale, black, mar & gray + Slstst, gray

Abnt, shale, mar, brn & gray + Slstst, gray & LS, crm-tan, f-vfxln, foss & ool, NV por

Shale, black carb

LS, crm-tan, fxln, chky IP, NV por, hd + Shale, vcol

LS, tan-gray, f-vfxln, chky IP, sub ool-foss, P ixln por, NS

Shale, black sub carb, gn & mar + pyr

LS, dolo, tan-gray, fxln, sltly foss, P vgy por, NS

LS, tan-brn, mot, fxln, chky IP, foss, P ixln por + Cht, gray-tan, sltly foss, trnsi-opq

Shale, black carb + LS, gray-white, vf-fxln, NV por, hd

Shale, mar, gray, gn & brn(sft) + Slstst, gray-brn

LS, crm-white, f-vfxln, chky IP, sub ool, NV por + Cht, white, opq

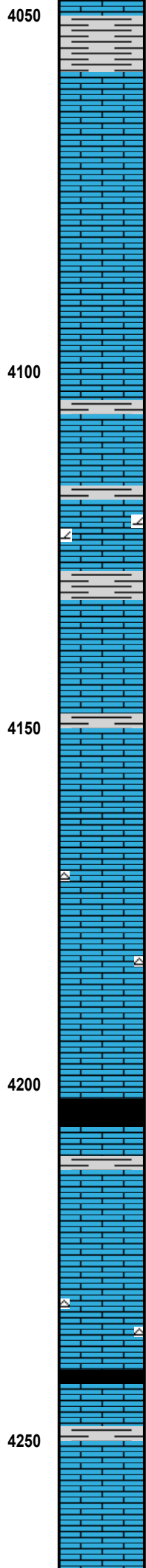
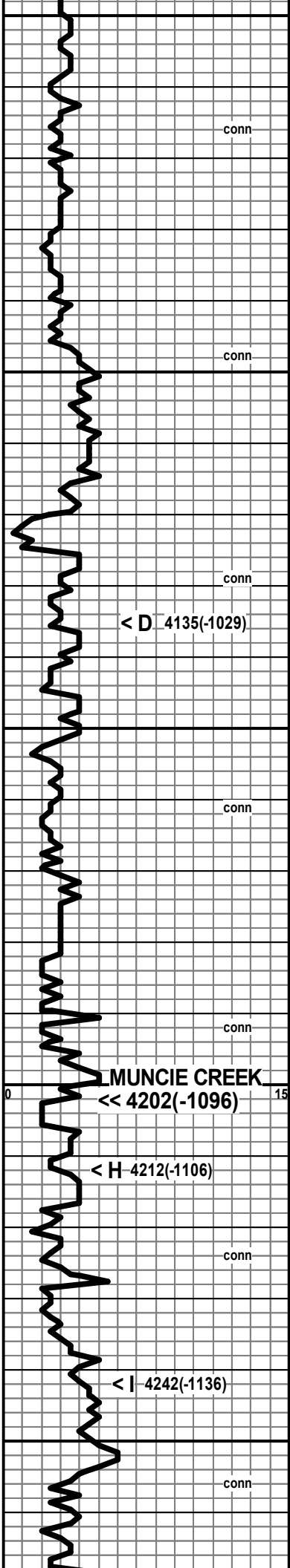
LS, crm-white, vf-fxln, chky IP, sub ool, NV por + Cht, white, opq

Shale, black & dk gn

LS, lt gray-white, vf-fxln, chky IP, sltly foss, P ixln por- NV por, hd + Cht, gray-tan, sltly foss, opq-trnsi

LS, tan-brn, vf-fxln, sltly foss, NV por, dense

Vis 50 Wt 9.0



Shale, black, mar & grn

LS, crm-tan, f-vfxln, sub ool, rr P oom por, spt'd gils stn, NSFO, N odor

LS, crm-white, f-vfxln, sltly foss, NV por, dense

LS, tan-lt gray, f-vfxln, foss & ool, rr P pp-vgy por & P iool por, VSSFO, spt'd stn, N fluor, N odor

LS, crm-white, vf-micxln, NV por, dense

LS, gray-tan, micxln, NV por, dense + LS, crm-tan, vf-fxln, sub ool-foss, NV por, dense

LS, dolo, tan-brn, vf-fxln, P ixln por, NS

Shale, gray, black, mar & gn

LS, tan-lt gray, vf-micxln, NV por, dense + LS, crm-brn, f-mxln, sltly foss, P ixln por, NS

Shale, black, dk gray & mar

LS, crm-white, vf-micxln, sub ool-foss, NV por, chky IP-dense

LS, lt gray-white, vf-micxln, chty, NV por, dense

LS, brn-tan, mot, f-vfxln, foss, NV por, dense + Shale, gray, gn, brn & mar

LS, gray-tan, f-vfxln, foss & ool, F-P vgy por, NS

Shale, black carb

LS, lt gray-brn, vf-micxln, NV por, dense

LS, brn-gray, f-vfxln, chky IP, foss, P pp-vgy por, mhd, VSSFO, spt'd stn, spt'd dull fluor, N odor

LS, crm-tan, fxln, ool & foss, P ixln por & P vgy por, NS + Cht, tan-gray, trnsl-opq

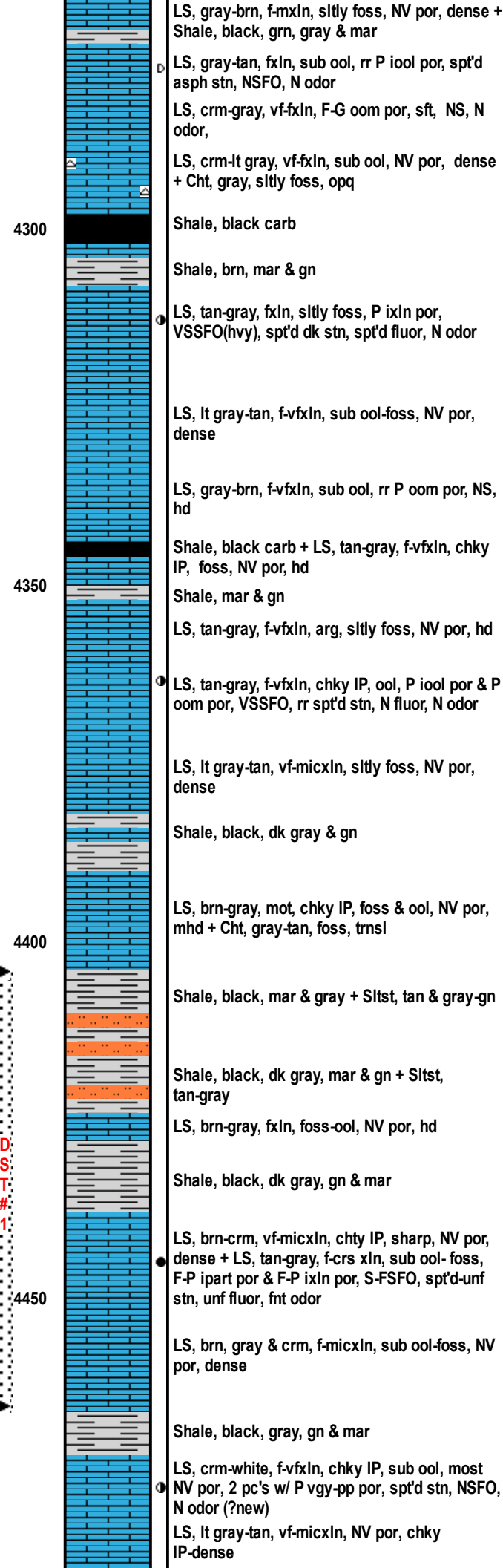
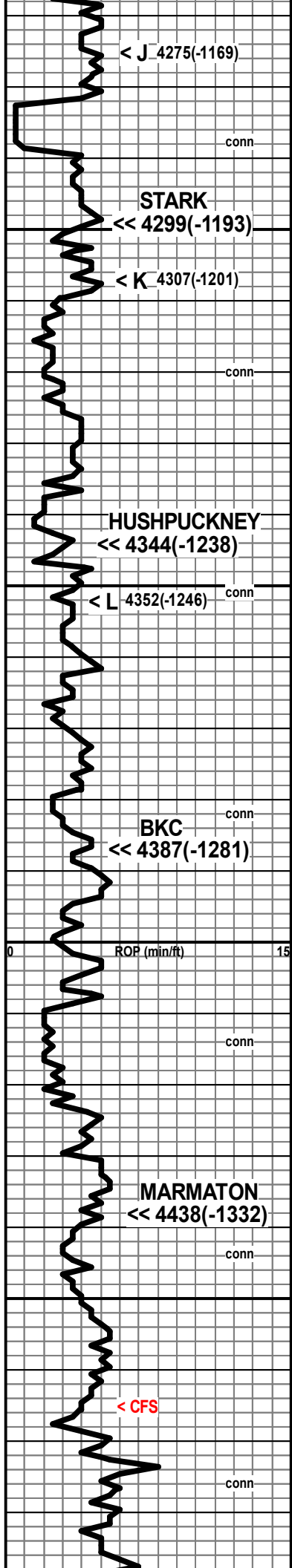
Shale, black carb

LS, brn-crm-gray, mot, f-vfxln, sub ool-foss, NV por, hd

LS, crm-tan, f-mxln, gran, chky IP, foss-sub ool, F-P ixln por & F-P vgy por, mhd, S-FSFO, spt'd dk stn, dull fluor, fnt odor

Vis 50 Wt 9.2 Fil 9.6 PH 10
 Chl 8,500 LCM 2#
 8/31/14 @ 4118

Vis 51 Wt 9.3 LCM 2#



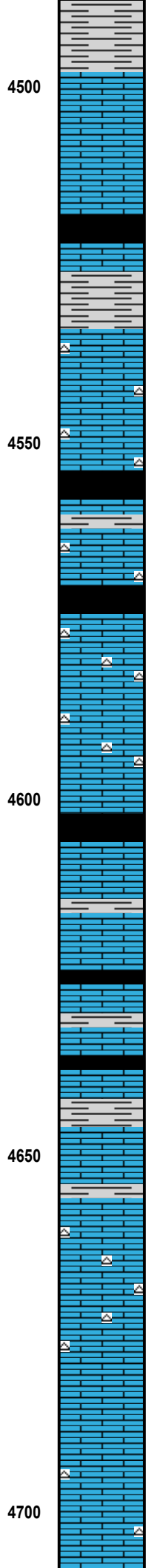
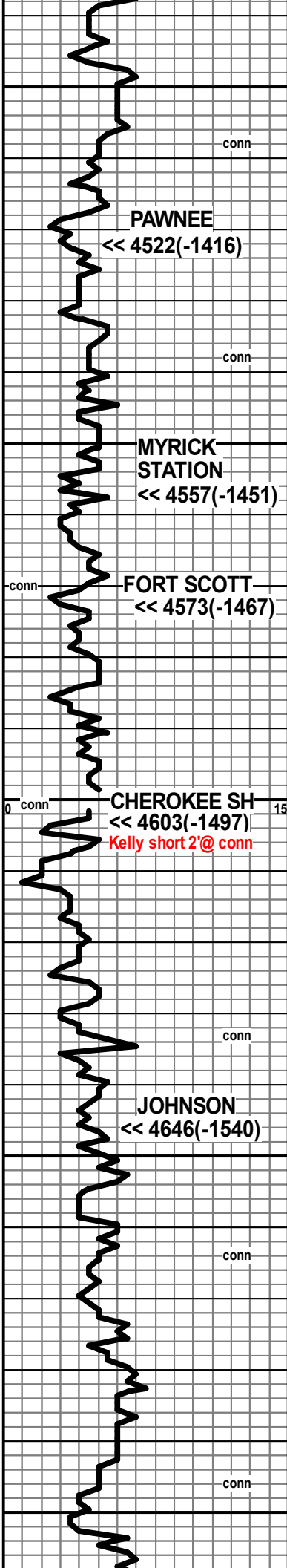
Jet @ 4288'

Following 20 stand short trip prior to DST #1, still pulled tight after CTCH. Ran another 10 stand short trip & CTCH prior to tripping out of hole w/ bit.

PIPE STRAP & SURVEY @ 4465'
Strap 1.81' short to board
Survey 1 1/2 deg

DST#1 4404 - 4465
(Marmaton A)
15 30 45 90
BLOW:
IF BOB in 2 min
ISI 8" return
FF BOB in 1 min
FSI 2" return
RECOVERY: 620' GIP
930' GCO (30%g 70%o)
434' MCGO (20%g 60%o 20%m)
1,364' TOTAL FLUID (Gr 36)
IHP 2184
IFP 120 - 260
ISIP 1178
FFP 298-529
FSIP 1065
FHP 2236 BHT 122 deg F
Vis 50 Wt 9.4 Fil 9.6 PH 9.0
Chl 8,000 LCM 1#
9/01/14 @ 4465

D.S.T.#.1



Shale, black, gray, gn & mar

4500
 LS, tan-gray, f-vfxln, sub ool-foss, NV por, dense

LS, crm-white, fxln, chky IP, foss & ool, rr P vgy por, NS

Shale, black carb + pyr

LS, tan-lt gray, vf-micxln, sub ool, NV por

Shale, black, gray & gn

LS, gray-brn, vf-micxln, sub ool-foss, NV por + Cht, tan-gray, sltly foss, trnsl

4550
 LS, brn-gray, fxln, chky IP, ool, rr P vgy por, NS, most NV por, dense + Cht, brn-dk gray, sltly foss, trnsl-opq

Shale, black carb

LS, crm-gray, fxln, chky IP, foss & ool, NV por, rr spt'd edge stn, NSFO, N odor + Cht, brn-gray, opq-trnsl & Shale, vcol

Shale, black carb

LS, brn-gray, fxln, arg, ool, NV por + Cht, gray-brn, opq

LS, brn-tan, f-vfxln, ool, rr P iool por, SS scummy res oil, ? spt'd stn, N fluor, N odor + Cht, gray-tan, ool, opq-trnsl

LS, brn-gray, vf-micxln, sub ool-foss, NV por, dense

4600
 Shale, black carb

LS, off white-tan, vfxln, chky, NV por, sft + Shale, black, gray, gn & mar

LS, crm-tan, f-vfxln, chky IP, sltly foss, rr P vgy por, NS + Shale, vcol

Shale, black carb

LS, dk brn-gray, vf-micxln, sltly foss, NV por dense + Shale, gray-gn, silty

Shale, black carb + LS, tan-gray, vf-micxln, sltly foss, NV por, dense

Shale, black, gray, gn & mar

4650
 LS, gray-brn, micxln, chty, sub ool-foss, NV por, dense

Shale, gray-gn, black & mar

LS, crm-tan, fxln, chky, sub ool-foss, few pc's P vgy por, VSSFO, spt'd lt stn, spt'd dull fluor, N odor + Cht, tan, trnsl

LS, brn-tan, vf-micxln, chty IP, NV por, dense + Cht, tan-gray, sltly foss, trnsl

LS, brn-tan, vf-micxln, chky IP, sltly foss, NV por + LS, br-tan-gray, vf-micxln, chty, NV por, dense

4700
 LS, crm-gray, f-vfxln, chky IP, sub ool-foss, rr P pp por w/ spt'd edge stn, NSFO, N fluor, N odor + LS, tan-brn, vf-micxln, chty, NV por, dense & Cht, gray-tan, foss, trnsl

Jet @ 4570

CFS 30" @ 4604 for engine repair

Vis 52 Wt 9.2

				
--	--	--	--	--