

Elite Cementing & Acid Service, LLC

810 E 7th, PO Box 92
Eureka, KS 67045



Date	Invoice #
5/14/2014	1223

Bill To
C&G Drilling 701 E River Eureka, KS 67045

Job Date	5/2/2014
Lease Information	
Larcom #2	
Foreman	RM

Customer ID#	Terms
1037	5% Discount

Item	Description	Qty	Rate	Amount
A205	15% HCL Acid	1,500	1.65	2,475.00
A213	Acid Inhibitor	3	40.00	120.00
A215	Iron Control	7.5	36.00	270.00
A214	Non Emulsifier	7.5	30.00	225.00
A210	Surface Tension Reducer	3	32.00	96.00
A109	Ball Injector	1	100.00	100.00T
A218	Ball Sealers	50	2.50	125.00
D103	Discount on Services		-5.00	-5.00T
D104	Discount on Materials		-165.55	-165.55

We appreciate your business!

Phone #	Fax #
620-583-5561	620-583-5524
E-mail	
rene@elitecementing.com	

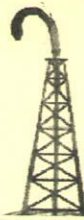
Subtotal	\$3,240.45
Sales Tax (6.4%)	\$6.08
Total	\$3,246.53
Payments/Credits	\$0.00
Balance Due	\$3,246.53

VH
29867
5-29-14

810 E 7TH
 PO Box 92
 EUREKA, KS 67045
 (620) 583-5561



**Cementing & Acidizing
 of Kansas, LLC**



Cement or Acid Field Report
 Ticket No. **1223**
 Foreman Russell Miley / ED
 Camp Eureka

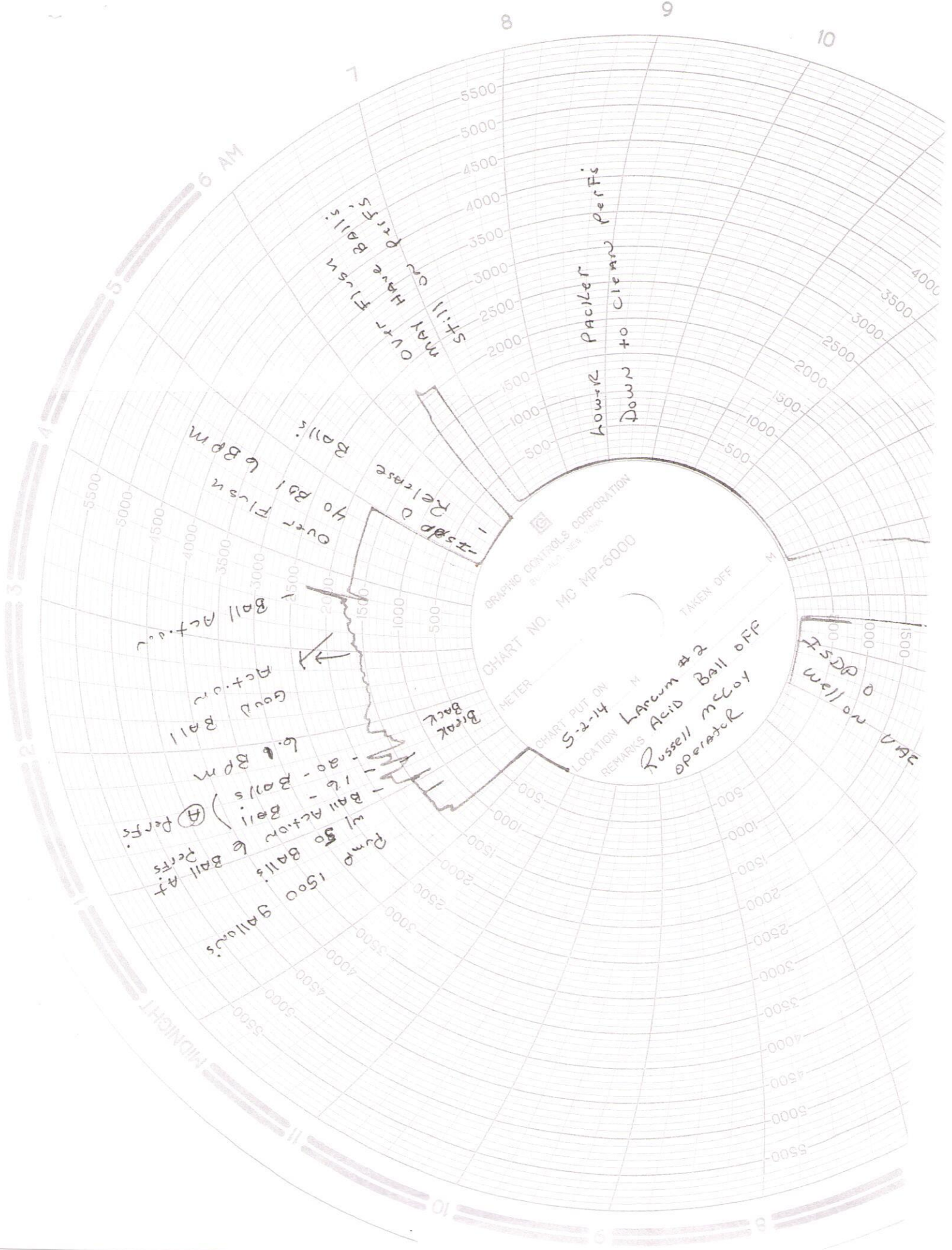
Date	Cust. ID #	Lease & Well Number		Section	Township	Range	County	State
5-2-14	1037	Larson #2					Butler	KS
Customer CTG Doh				Safety Meeting RM LS AB	Unit #	Driver	Unit #	Driver
Mailing Address 701 East River					101	AB		
City Eureka		State KS	Zip Code 67045					

Job Type Acid Hole Depth _____ Slurry Vol. _____ Tubing 2 3/8
 Casing Depth 2950 Hole Size _____ Slurry Wt. _____ Drill Pipe _____
 Casing Size & Wt. 5 1/2 Cement Left in Casing _____ Water Gal/SK _____ Other _____
 Displacement _____ Displacement PSI _____ Bump Plug to _____ BPM _____

Remarks: Safety meeting Perfs 2407-2470 33 holes, well had 400 gallons 15% mud
 Acid 0.15-1-14 w/ 100# Break Down PSI + 8 Bbl over Flush + swab back. Run 2 3/8
 Tubing + Packer + set 2287. Rig up to tubing, Pump 1500 gallons Acid w/ 50 BALLS
 to cover 33 holes, Ball Action started w/ 6 BALLS AT Perfs GOOD BALL ACTION
 w/ PSI INCREASES TO 1700# + Break Backs to 1200# GOOD BREAKS AT 6
 16 + 20 BALLS AT Perfs. GOOD BALL ACTION next 10 BALL w/ one Final 2400#
 INCREASE BACK TO 1500# AT TAIL END OF BALL ACTION. OVER FLUSH 400 BBL
 AT 6 BPM, SHUT DOWN, Release BALLS, Pump 5 BBL water 2100# 6.8 BPM, SHUT DOWN
 Drop Packer Down to clean BALLS OF Perfs, Raise + Reset Packer. Pump Remaining 25
 BBL SALT WATER FLUSH 2000# 6.8 BPM = 70 BBL TOTAL ISDP 0 well on VAC 1.1 BPM
 THANKS RUSSELL MILEY

Code	Qty or Units	Description of Product or Services	Unit Price	Total
		Pump Charge <u>Retirent</u>	N.C.	
		Mileage <u>Retirent</u>	N.C.	
A-205	1000	gallons 15% HCL Acid	7.65	2,475.00
A-213	3	gallon Acid Inhibitor	40.00	120.00
A-212	7 1/2	gallons Iron Control	36.00	270.00
A-214	7 1/2	gallon Non Emulsifier Agent	30.00	225.00
A-210	3	gallon Surface Tension Reducer	32.00	96.00
A109	1	1 Ball Cow Rental	100.00	100.00
A218	50	1.3 Ball centers	2.50	
<div style="border: 1px solid black; border-radius: 50%; padding: 10px; display: inline-block;"> 590 < 110.81 > 3246.53 </div>				
				Sales Tax <u>6.40</u>
Authorization <u>by Tim Gulick</u> Title <u>owner</u>				Total <u>3411.40</u>

I agree to the payment terms and conditions of services provided on the back of this job ticket. Any amendments to payment terms must be in writing on the front of this job ticket or in the Customer's records at ELITE's office.



GRAPHIC CONTROLS CORPORATION
 CHART NO. MC MP-6000
 METER

CHART PUT ON
 5-2-54
 LOCATION

REMARKS
 Larum #2
 Acid Ball off
 Russell Mcloy
 Operator

Pump 1500 Gallons
 Ball Action & Ball Perfs
 16 - Balls
 80 - Balls
 Good Ball
 Action

Break Back

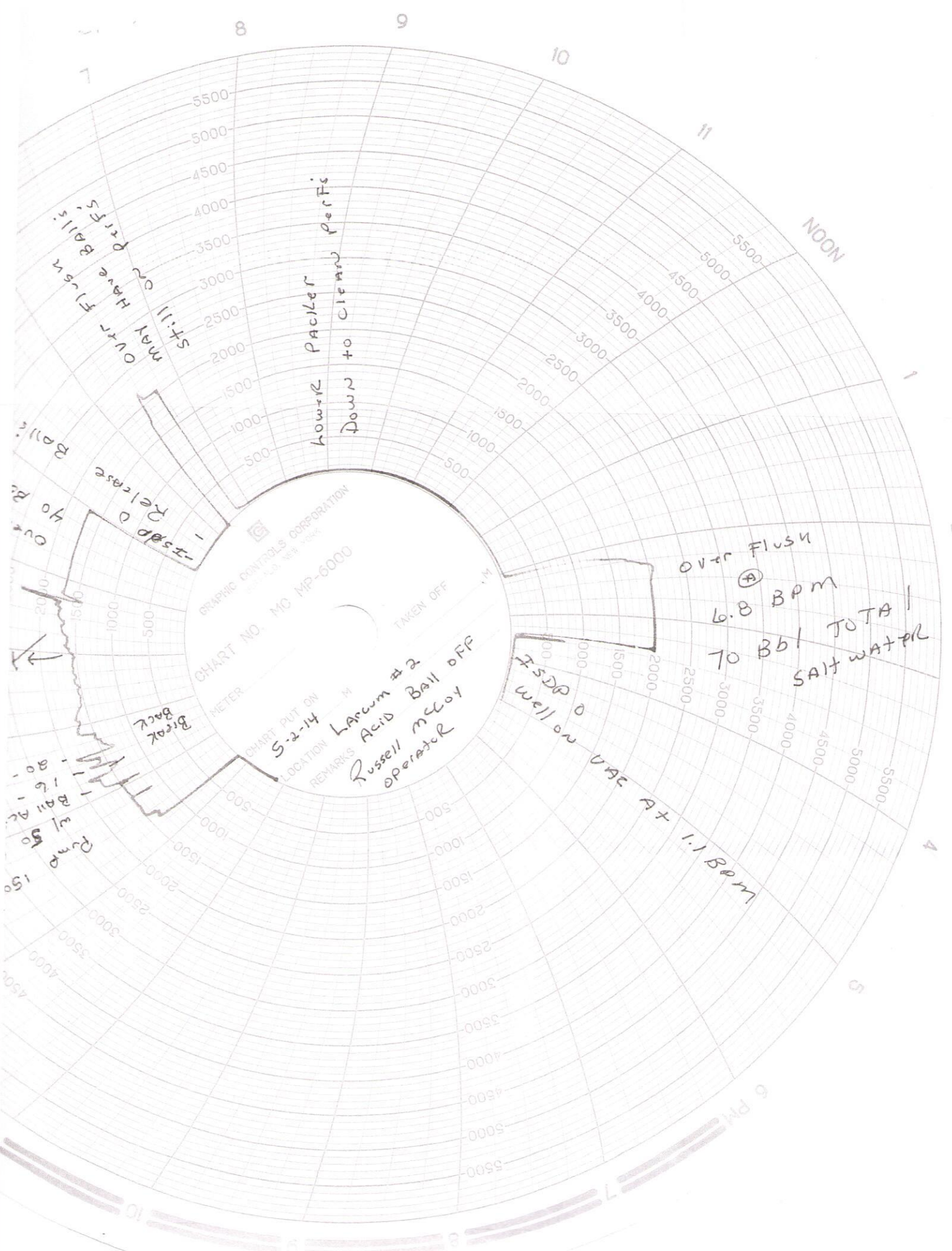
Release Balls
 Ovr Flown Balls
 Still on Perfs

Howrk Pacifer
 Down to Clean Perfs

7500 well on VBE

MIDNIGHT

6 AM



Over Flush
 May Have Balls
 Still on Perfs

Lower Packer
 Down to Clean Perfs

- Stop & Release
 Balls
 Over Flush

Over Flush
 6.8 BPM
 TO 601 TOTAL
 SALT WATER

7500 well on
 VAC AT 1.1 BPM

Break
 Back
 Pump
 w/ 50
 Ball At
 16
 80

2
 3
 4
 5
 6 PM
 7
 8
 9
 10
 11
 NOON

PRINTED IN U.S.A.

Elite Cementing & Acid Service, LLC

810 E 7th, PO Box 92
Eureka, KS 67045



Date	Invoice #
4/18/2014	1176

Bill To
C&G Drilling 701 E River Eureka, KS 67045

Job Date	4/8/2014
Lease Information	
Larcom #2	
Foreman	RL

Customer ID#	Terms
1037	5% Discount

Item	Description	Qty	Rate	Amount
C101	Cement Pump-Surface	1	840.00	840.00
C107	Pump Truck Mileage (one way)	15	3.95	59.25
C200	Class A Cement-94# sack	110	15.00	1,650.00T
C205	Calcium Chloride	310	0.60	186.00T
C206	Gel Bentonite	200	0.20	40.00T
C209	Flo-Seal	25	2.25	56.25T
C108A	Ton Mileage (min. charge)	1	345.00	345.00
D101	Discount on Services		-62.22	-62.22
D102	Discount on Materials		-96.61	-96.61T

We appreciate your business!

Phone #	Fax #
620-583-5561	620-583-5524
E-mail	
elitecementing@att.net	

Subtotal	\$3,017.67
Sales Tax (6.4%)	\$117.48
Total	\$3,135.15
Payments/Credits	\$0.00
Balance Due	\$3,135.15

VH
29654
4-29-14

810 E 7TH
 PO Box 92
 EUREKA, KS 67045
 (620) 583-5561

Elite

**Cementing & Acidizing
 of Kansas, LLC**



Cement or Acid Field Report

Ticket No. **1176**

Foreman Rick Ledford

Camp Eureka KS

Date	Cust. ID #	Lease & Well Number		Section	Township	Range	County	State
4/8/14	1037	Larcom # 2		16	263	8E	Butler	KS
Customer				Safety Meeting	Unit #	Driver	Unit #	Driver
C+G Drilling				PL Am CB	104	Akim		
Mailing Address					112	Chris B.		
701 E. River								
City	State	Zip Code						
Eureka	KS	67045						

Job Type surface Hole Depth 218' Slurry Vol. 27 Bbl Tubing _____
 Casing Depth 217 GI. Hole Size 12 1/4" Slurry Wt. 15# Drill Pipe _____
 Casing Size & Wt. 8 5/8" Cement Left in Casing 20' Water Gal/SK 6.5 Other _____
 Displacement 13 1/4 Bbl Displacement PSI _____ Bump Plug to _____ BPM _____

Remarks: Safety meeting. Rig up to 8 5/8" casing. Break circulation w/ fresh water. Mixed 110 srs class A cement w/ 3% cacl2. 2% gel + 1/4" floccle /sk @ 15# /gal. Displace w/ 13 1/4 Bbl fresh water. Shut casing in w/ good cement returns to surface - 7 Bbl slurry to pit. Job complete. Rig down.

"Thank You"

Code	Qty or Units	Description of Product or Services	Unit Price	Total
C101	1	Pump Charge	840.00	840.00
C107	15	Mileage	3.95	59.25
C-200	110 srs	class A cement	15.00	1650.00
C-205	310#	3% cacl2	.60	186.00
C-206	200#	2% gel	.20	40.00
C-209	25#	1/4" floccle /sk	2.25	56.25
C102A	5.17	ton mileage bulk trk	m/c	345.00
Total = \$ 3300.16				
- 5% disc. = \$ 165.01				
Total = \$ 3135.15				
			Subtotal	3176.50
			Sales Tax	123.66
Authorization _____ Title _____			Total	3300.16

I agree to the payment terms and conditions of services provided on the back of this job ticket. Any amendments to payment terms must be in writing on the front of this job ticket or in the Customer's records at ELITE's office.

Elite Cementing & Acid Service, LLC

810 E 7th, PO Box 92
Eureka, KS 67045



Date	Invoice #
4/18/2014	1204

Bill To
C&G Drilling 701 E River Eureka, KS 67045

Job Date	4/12/2014
Lease Information	
Larcom #2	
Foreman	KM

Customer ID#	Terms
1037	5% Discount

Item	Description	Qty	Rate	Amount
C102	Cement Pump-Longstring	1	1,050.00	1,050.00
C107	Pump Truck Mileage (one way)	15	3.95	59.25
C201	Thick Set Cement	125	19.50	2,437.50T
C207	KolSeal	1,000	0.45	450.00T
C208	Pheno Seal	250	1.25	312.50T
C211	CFL-115	30	10.50	315.00T
C217	Caustic Soda	100	1.60	160.00T
C108A	Ton Mileage (min. charge)	1	345.00	345.00
C421	5 1/2" Latch Down Plug	1	230.00	230.00T
C661	5 1/2" AFU Float Shoe	1	294.00	294.00T
C504	5 1/2" Centralizer	6	48.00	288.00T
D101	Discount on Services		-72.71	-72.71
D102	Discount on Materials		-224.35	-224.35T

We appreciate your business!

Phone #	Fax #
620-583-5561	620-583-5524
E-mail	
elitecementing@att.net	

Subtotal	\$5,644.19
Sales Tax (6.4%)	\$272.81
Total	\$5,917.00
Payments/Credits	\$0.00
Balance Due	\$5,917.00

V# 29654
4-29-14

810 E 7TH
 PO Box 92
 EUREKA, KS 67045
 (620) 583-5561

Elite

**Cementing & Acidizing
 of Kansas, LLC**



Cement or Acid Field Report

Ticket No. **1204**
 Foreman KEVIN MCCOY
STEVE MEAD
 Camp EUREKA

API # 15-015-24018

Date	Cust. ID #	Lease & Well Number	Section	Township	Range	County	State		
4-12-14	1037	LARCOM # 2	16	26S	8E	Butler	Ks		
Customer	Mailing Address		City	State	Zip Code	Safety Meeting			
C & G DRILLING, INC	701 E RIVER		EUREKA	Ks	67045	KM 5M AM DG			
Unit #			Driver		Unit #			Driver	
104			ALAN M.						
110			DAVE G.						

Job Type LONGSTRING Hole Depth 2975 KB Slurry Vol. 41 BBL Tubing _____
 Casing Depth 2950' KG Hole Size 7 7/8 Slurry Wt. 13.7# Drill Pipe _____
 Casing Size & Wt. 5 1/2 Cement Left in Casing 0' Water Gal/SK 9.0 Other _____
 Displacement 71 BBL Displacement PSI 650 Bump Plug to 1100 PSI BPM _____

Remarks: SAFETY MEETING: Rig up to 5 1/2 casing w/ Rotating Swivel. BREAK CIRCULATION w/ 5 BBL FRESH WATER. Pump 10 BBL CAUSTIC PRE FLUSH, 5 BBL WATER SPACER. MIXED 125 SKS THICK SET CEMENT w/ 8" KOL-SEAL /SK, 2" PHENOSEAL /SK @ 13.7# /GAL YIELD 1.85 = 41 BBL SLURRY. Wash out Pump & Lines. Shut down. Release Latch down. Displace Plug to SEAT w/ 71 BBL FRESH WATER. FINAL PUMPING PRESSURE 650 PSI. Bump Plug to 1100 PSI. WAIT 2 MINS. Release Pressure. FLOAT & Plug Held. Good Circulation @ ALL times while Cementing. Rotated casing during Plug Displacement. Job Complete. Rig Down.

Code	Qty or Units	Description of Product or Services	Unit Price	Total
C 102	1	Pump Charge		
C 107	15	Mileage	1050.00	1050.00
			3.95	59.25
C 201	125 SKS	THICK SET CEMENT	19.50	2437.50
C 207	1000 #	KOL-SEAL 8" /SK	.45 #	450.00
C 208	250 #	PHENOSEAL 2" /SK	1.25 #	312.50
C 211	30 #	CFL-115 (Fluid Loss Additive)	10.50 #	315.00
C 217	100 #	CAUSTIC SODA PRE FLUSH	1.60 #	160.00
C 108 A	6.87 TONS	TON MILEAGE	M/C	345.00
C 421	1	5 1/2 LATCH DOWN PLUG	230.00	230.00
C 661	1	5 1/2 AFU FLOAT SHOE	294.00	294.00
C 504	6	5 1/2 x 7 7/8 CENTRALIZERS	48.00	288.00
THANK YOU				
5% Discount				
2311.422				
6917.00				
6.4%				
			Sub Total	5941.25
			Sales Tax	287.17
Authorization <u>Witnessed By Duke Coulter</u> Title <u>Partner/co owner</u>			Total	6228.42

I agree to the payment terms and conditions of services provided on the back of this job ticket. Any amendments to payment terms must be in writing on the front of this job ticket or in the Customer's records at ELITE's office.