



TRILOBITE TESTING, INC.

DRILL STEM TEST REPORT

Trek AEC LLC

155 N. Market STE 170
Wichita KS, 67202

ATTN: Aaron Young

33-6s-20w Rooks KS

States 1-33

Job Ticket: 54068

DST#: 1

Test Start: 2014.07.11 @ 18:31:00

GENERAL INFORMATION:

Formation: **Tor - LKC "A"**

Deviated: No Whipstock: ft (KB)

Time Tool Opened: 22:54:00

Time Test Ended: 03:28:45

Test Type: Conventional Bottom Hole (Initial)

Tester: Cody Bloedorn

Unit No: 73

Interval: **3405.00 ft (KB) To 3459.00 ft (KB) (TVD)**

Total Depth: 3459.00 ft (KB) (TVD)

Hole Diameter: 7.88 inches Hole Condition: Fair

Reference Elevations: 2230.00 ft (KB)

2225.00 ft (CF)

KB to GR/CF: 5.00 ft

Serial #: 8648

Inside

Press@RunDepth: 77.48 psig @ 3442.00 ft (KB)

Start Date: 2014.07.11

End Date:

2014.07.12

Capacity: 8000.00 psig

Last Calib.: 2014.07.12

Start Time: 18:31:05

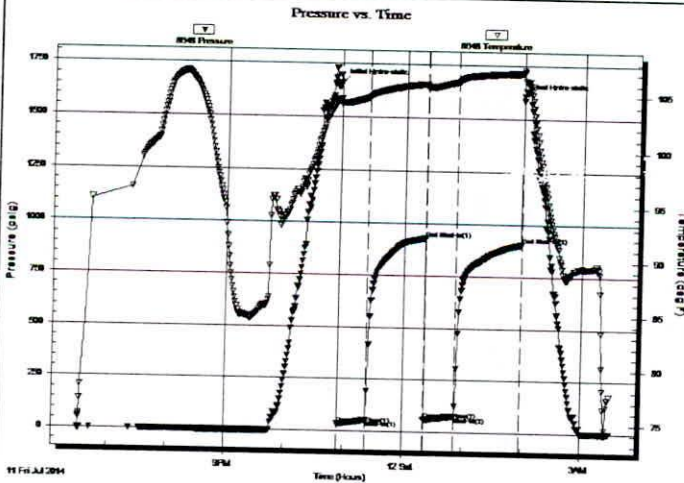
End Time:

03:28:45

Time On Btm: 2014.07.11 @ 22:53:45

Time Off Btm: 2014.07.12 @ 01:58:30

TEST COMMENT: 30 - IF- 1/2" blow
60 - IS- No return
30 - FF- Surface return
60 - FS- No return



PRESSURE SUMMARY

Time (Min.)	Pressure (psig)	Temp (deg F)	Annotation
0	1663.20	104.63	Initial Hydro-static
1	34.57	104.08	Open To Flow (1)
29	55.39	104.78	Shut-In(1)
87	929.00	106.02	End Shut-In(1)
88	60.37	105.59	Open To Flow (2)
119	77.48	106.25	Shut-In(2)
185	906.32	107.09	End Shut-In(2)
185	1605.53	107.38	Final Hydro-static

Recovery

Length (ft)	Description	Volume (bbl)
75.00	Mud - Oil spots, 100%M	0.37

Gas Rates

Choke (inches)	Pressure (psig)	Gas Rate (Mcf/d)



**TRILOBITE
TESTING, INC.**

DRILL STEM TEST REPORT

FLUID SUMMARY

Trek AEC LLC
155 N. Market STE 170
Wichita KS, 67202
ATTN: Aaron Young

33-6s-20w Rooks KS
States 1-33
Job Ticket: 54068 **DST#: 1**
Test Start: 2014.07.11 @ 18:31:00

Mud and Cushion Information

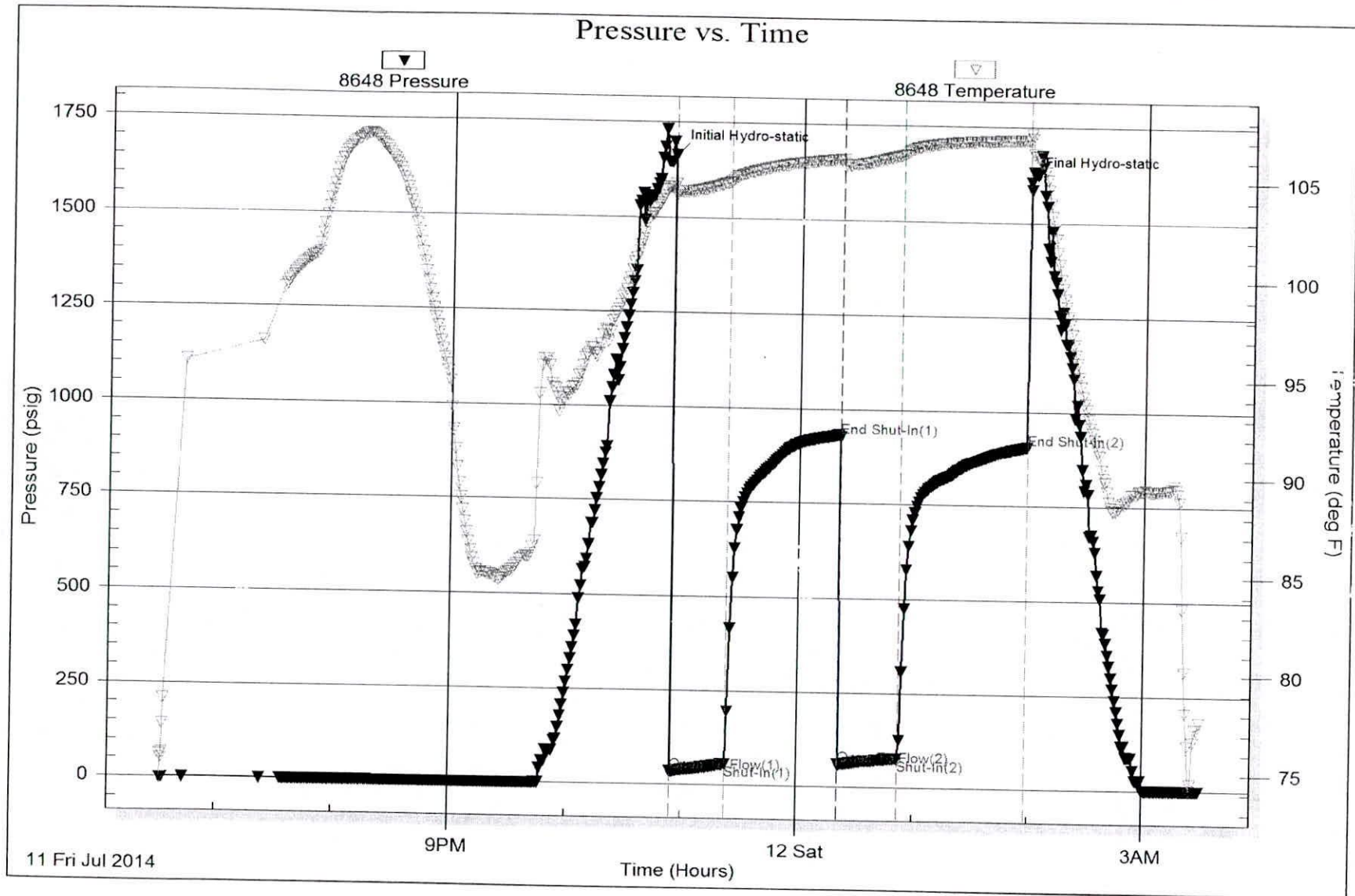
Mud Type: Gel Chem	Cushion Type:	Oil API:	deg API
Mud Weight: 9.00 lb/gal	Cushion Length: ft	Water Salinity:	ppm
Viscosity: 49.00 sec/qt	Cushion Volume: bbl		
Water Loss: 6.00 in ³	Gas Cushion Type:		
Resistivity: ohm.m	Gas Cushion Pressure: psig		
Salinity: 500.00 ppm			
Filter Cake: 2.00 inches			

Recovery Information

Recovery Table

Length ft	Description	Volume bbl
75.00	Mud - Oil spots, 100%M	0.369

Total Length: 75.00 ft Total Volume: 0.369 bbl
Num Fluid Samples: 0 Num Gas Bombs: 0 Serial #:
Laboratory Name: Laboratory Location:
Recovery Comments:





TRILOBITE TESTING, INC.

DRILL STEM TEST REPORT

Trek AEC LLC
 155 N. Market STE 170
 Wichita KS, 67202
 ATTN: Aaron Young

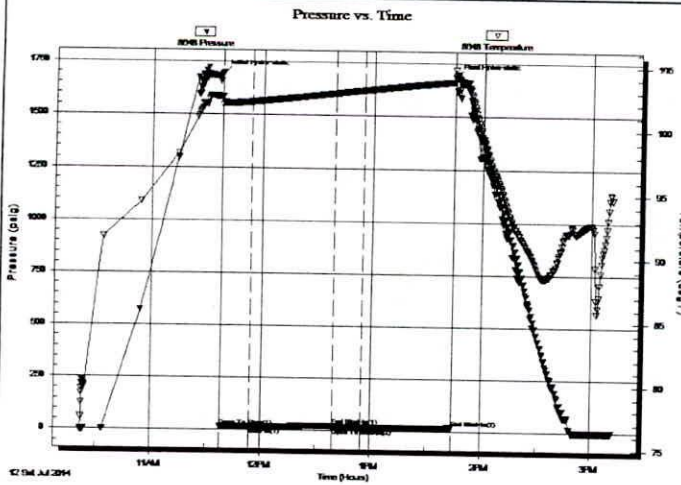
33-6s-20w Rooks KS
States 1-33
 Job Ticket: 54069 **DST#: 2**
 Test Start: 2014.07.12 @ 10:22:00

GENERAL INFORMATION:

Formation: **LKC "C"**
 Deviated: No Whipstock: ft (KB)
 Time Tool Opened: 11:38:15
 Time Test Ended: 15:11:15
 Interval: **3472.00 ft (KB) To 3498.00 ft (KB) (TVD)**
 Total Depth: 3498.00 ft (KB) (TVD)
 Hole Diameter: 7.88 inches Hole Condition: Fair
 Test Type: Conventional Bottom Hole (Reset)
 Tester: Cody Bloedorn
 Unit No: 73
 Reference Elevations: 2230.00 ft (KB)
 2225.00 ft (CF)
 KB to GR/CF: 5.00 ft

Serial #: 8648 **Inside**
 Press@RunDepth: 16.73 psig @ 3476.00 ft (KB)
 Start Date: 2014.07.12 End Date: 2014.07.12
 Start Time: 10:22:05 End Time: 15:11:14
 Capacity: 8000.00 psig
 Last Calib.: 2014.07.12
 Time On Btm: 2014.07.12 @ 11:38:00
 Time Off Btm: 2014.07.12 @ 13:44:30

TEST COMMENT: 15 - IF- Surface blow, died in 9 minutes
 45 - IS- No return
 15 - FF- No blow
 45 - FS- No return



PRESSURE SUMMARY

Time (Min.)	Pressure (psig)	Temp (deg F)	Annotation
0	1692.12	102.50	Initial Hydro-static
1	16.29	101.87	Open To Flow (1)
16	16.55	102.13	Shut-In(1)
62	23.31	102.83	End Shut-In(1)
62	16.39	102.84	Open To Flow (2)
77	16.73	103.08	Shut-In(2)
127	21.13	103.81	End Shut-In(2)
127	1679.37	104.76	Final Hydro-static

Recovery

Length (ft)	Description	Volume (bbl)
1.00	Mud, 100%M	0.00

* Recovery from multiple tests

Gas Rates

Choke (Inches)	Pressure (psig)	Gas Rate (Mcf/d)



**TRILOBITE
TESTING, INC.**

DRILL STEM TEST REPORT

FLUID SUMMARY

Trek AEC LLC

33-6s-20w Rooks KS

155 N. Market STE 170
Wichita KS, 67202

States 1-33

Job Ticket: 54069

DST#: 2

ATTN: Aaron Young

Test Start: 2014.07.12 @ 10:22:00

Mud and Cushion Information

Mud Type: Gel Chem

Mud Weight: 9.00 lb/gal

Viscosity: 52.00 sec/qt

Water Loss: 6.80 in³

Resistivity: ohm.m

Salinity: 900.00 ppm

Filter Cake: 2.00 inches

Cushion Type:

Cushion Length: ft

Cushion Volume: bbl

Gas Cushion Type:

Gas Cushion Pressure: psig

Oil API: deg API

Water Salinity: ppm

Recovery Information

Recovery Table

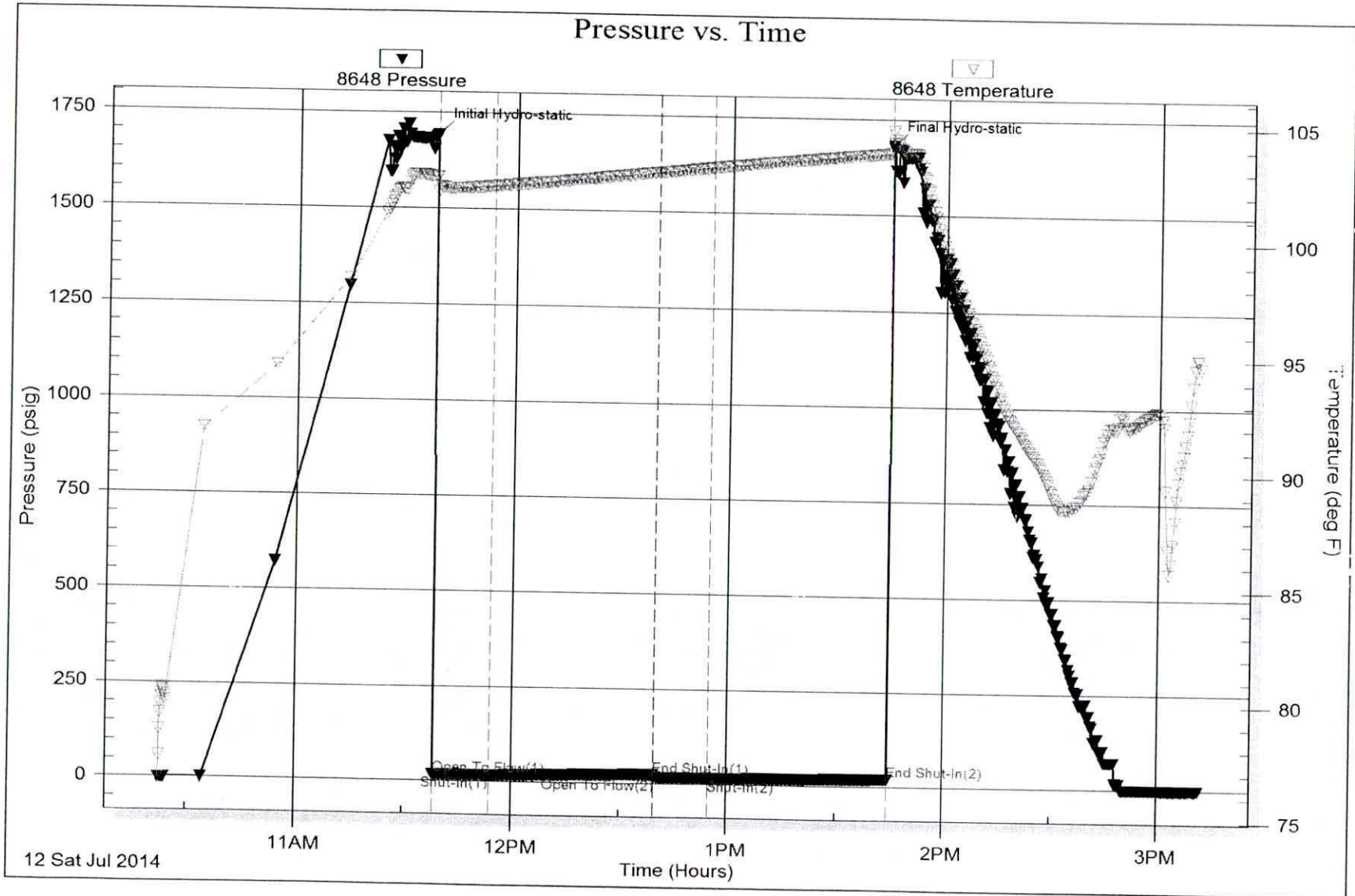
Length ft	Description	Volume bbl
1.00	Mud, 100% M	0.005

Total Length: 1.00 ft Total Volume: 0.005 bbl

Num Fluid Samples: 0 Num Gas Bombs: 0 Serial #:

Laboratory Name: Laboratory Location:

Recovery Comments:

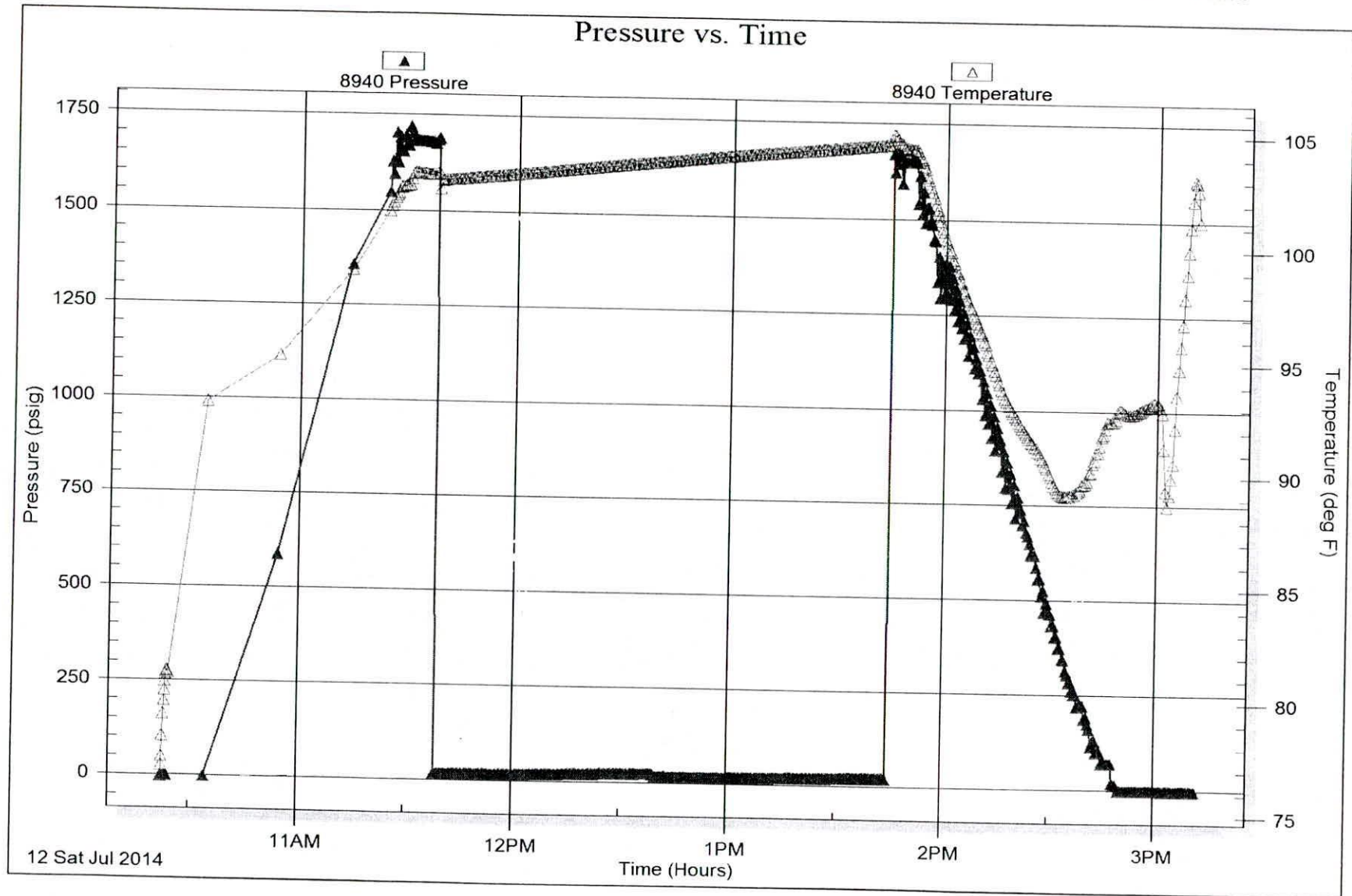


Serial #: 8940

Outside Trek AECLLC

States 1-33

DST Test Number: 2





**TRILOBITE
TESTING, INC.**

DRILL STEM TEST REPORT

FLUID SUMMARY

Trek AEC LLC

33-6s-20w Rooks KS

155 N. Market STE 170
Wichita KS, 67202

States 1-33

Job Ticket: 54070

DST#: 3

ATTN: Aaron Young

Test Start: 2014.07.12 @ 21:54:00

Mud and Cushion Information

Mud Type: Gel Chem

Cushion Type:

Oil API:

deg API

Mud Weight: 9.00 lb/gal

Cushion Length:

ft

Water Salinity:

85000 ppm

Viscosity: 52.00 sec/qt

Cushion Volume:

bbbl

Water Loss: 6.80 in³

Gas Cushion Type:

Resistivity: ohm.m

Gas Cushion Pressure:

psig

Salinity: 900.00 ppm

Filter Cake: 2.00 inches

Recovery Information

Recovery Table

Length ft	Description	Volume bbl
62.00	SOCWM, 5%W, 10%O, 85%M	0.305
310.00	VSOCMW, 5%O, 40%M, 55%W	3.820
62.00	WM, 30%W, 70%M	0.870
1.00	Free Oil, 100%O	0.014

Total Length: 435.00 ft Total Volume: 5.009 bbl

Num Fluid Samples: 0

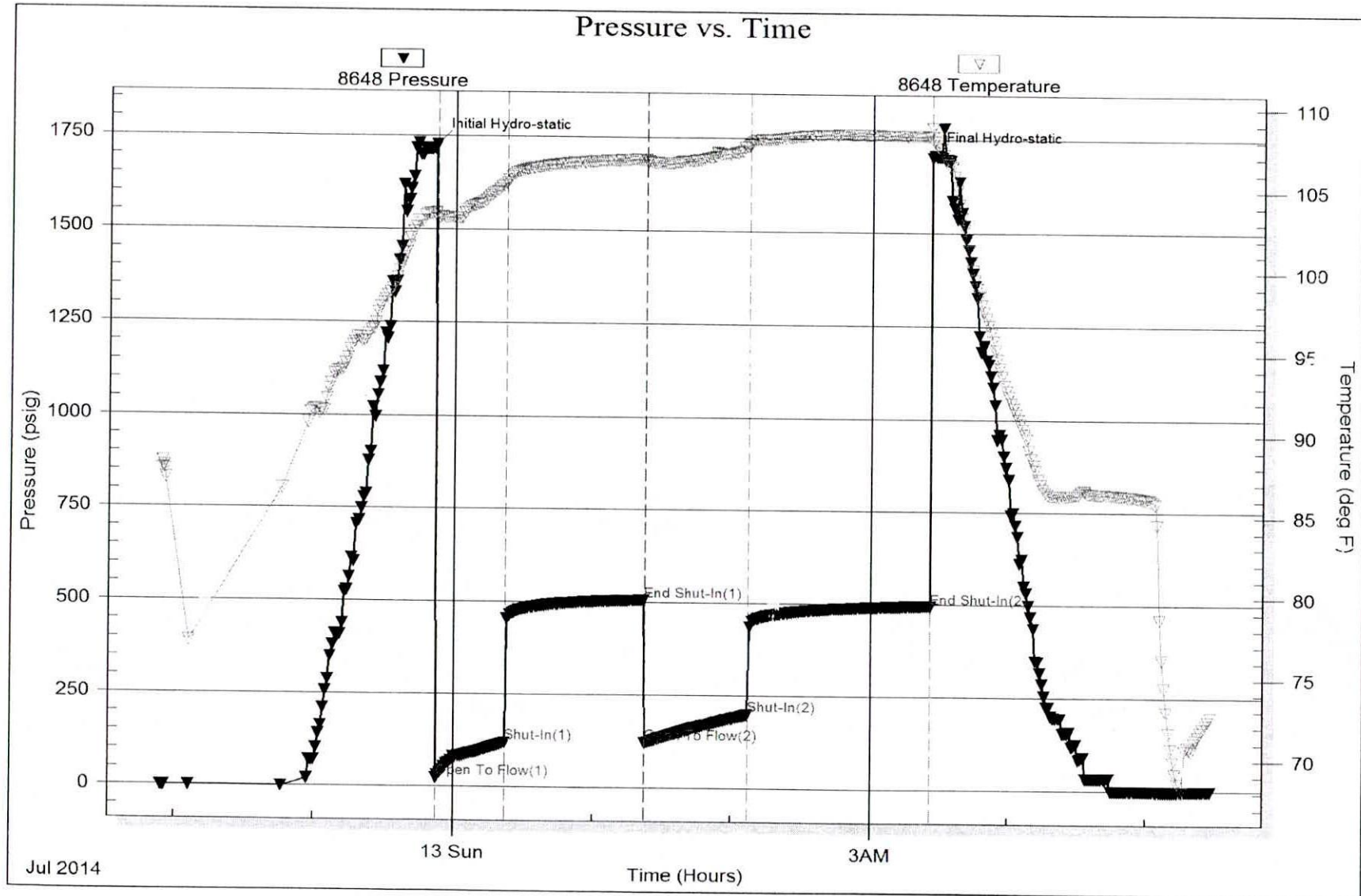
Num Gas Bombs: 0

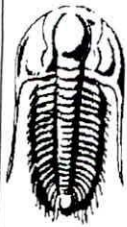
Serial #:

Laboratory Name:

Laboratory Location:

Recovery Comments: Salinity: .09 @ 70 Degrees = 85,000





TRILOBITE TESTING, INC.

DRILL STEM TEST REPORT

Trek AEC LLC

155 N. Market STE 170
Wichita KS, 67202

ATTN: Aaron Young

33-6s-20w Rooks KS

States 1-33

Job Ticket: 54071

DST#: 4

Test Start: 2014.07.13 @ 16:06:00

GENERAL INFORMATION:

Formation: **LKC "J,K"**

Deviated: No Whipstock: ft (KB)

Time Tool Opened: 20:03:45

Time Test Ended: 02:14:15

Test Type: Conventional Bottom Hole (Reset)

Tester: Cody Bloedorn

Unit No: 73

Interval: **3605.00 ft (KB) To 3642.00 ft (KB) (TVD)**

Total Depth: 3642.00 ft (KB) (TVD)

Hole Diameter: 7.88 inches Hole Condition: Fair

Reference Elevations: 2230.00 ft (KB)

2225.00 ft (CF)

KB to GR/CF: 5.00 ft

Serial #: 8648

Inside

Press@RunDepth: 39.83 psig @ 3609.00 ft (KB)

Start Date: 2014.07.13

End Date:

2014.07.14

Capacity: 8000.00 psig

Last Calib.: 2014.07.14

Start Time: 16:06:05

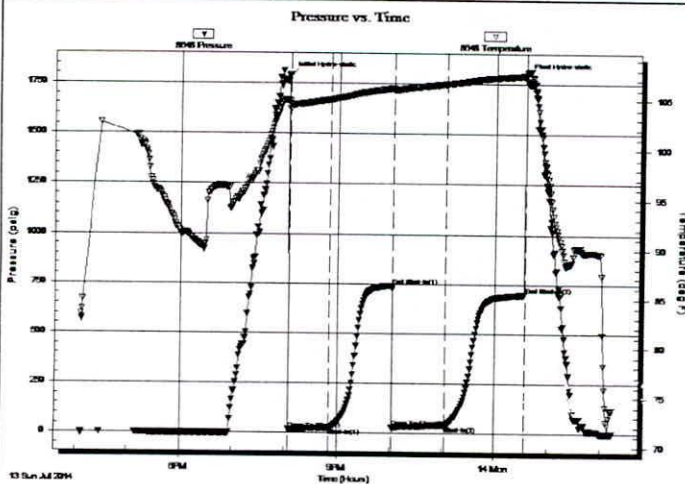
End Time:

02:14:15

Time On Btm: 2014.07.13 @ 20:03:30

Time Off Btm: 2014.07.14 @ 00:34:15

TEST COMMENT: 45 - IF- 1 1/2" blow
75 - IS- No return
60 - FF- 3/4" blow
90 - FSI- No return



PRESSURE SUMMARY

Time (Min.)	Pressure (psig)	Temp (deg F)	Annotation
0	1788.16	104.88	Initial Hydro-static
1	17.88	104.04	Open To Flow (1)
47	26.46	105.01	Shut-In(1)
119	741.17	106.15	End Shut-In(1)
119	28.17	105.94	Open To Flow (2)
180	39.83	106.60	Shut-In(2)
271	696.42	107.45	End Shut-In(2)
271	1787.57	107.77	Final Hydro-static

Recovery

Length (ft)	Description	Volume (bbl)
45.00	HOCM, 50%O, 50%M	0.22
15.00	GO, 5%G, 95%O	0.07

* Recovery from multiple tests

Gas Rates

Choke (inches)	Pressure (psig)	Gas Rate (Mcf/d)



**TRILOBITE
TESTING, INC.**

DRILL STEM TEST REPORT

FLUID SUMMARY

Trek AEC LLC

33-6s-20w Rooks KS

155 N. Market STE 170
Wichita KS, 67202

States 1-33

Job Ticket: 54071

DST#: 4

ATTN: Aaron Young

Test Start: 2014.07.13 @ 16:06:00

Mud and Cushion Information

Mud Type: Gel Chem	Cushion Type:	Oil API:	deg API
Mud Weight: 9.00 lb/gal	Cushion Length: ft	Water Salinity:	ppm
Viscosity: 49.00 sec/qt	Cushion Volume: bbl		
Water Loss: 5.99 in ³	Gas Cushion Type:		
Resistivity: ohm.m	Gas Cushion Pressure: psig		
Salinity: 500.00 ppm			
Filter Cake: 2.00 inches			

Recovery Information

Recovery Table

Length ft	Description	Volume bbl
45.00	HOCM, 50%O, 50%M	0.221
15.00	GO, 5%G, 95%O	0.074

Total Length: 60.00 ft Total Volume: 0.295 bbl

Num Fluid Samples: 0

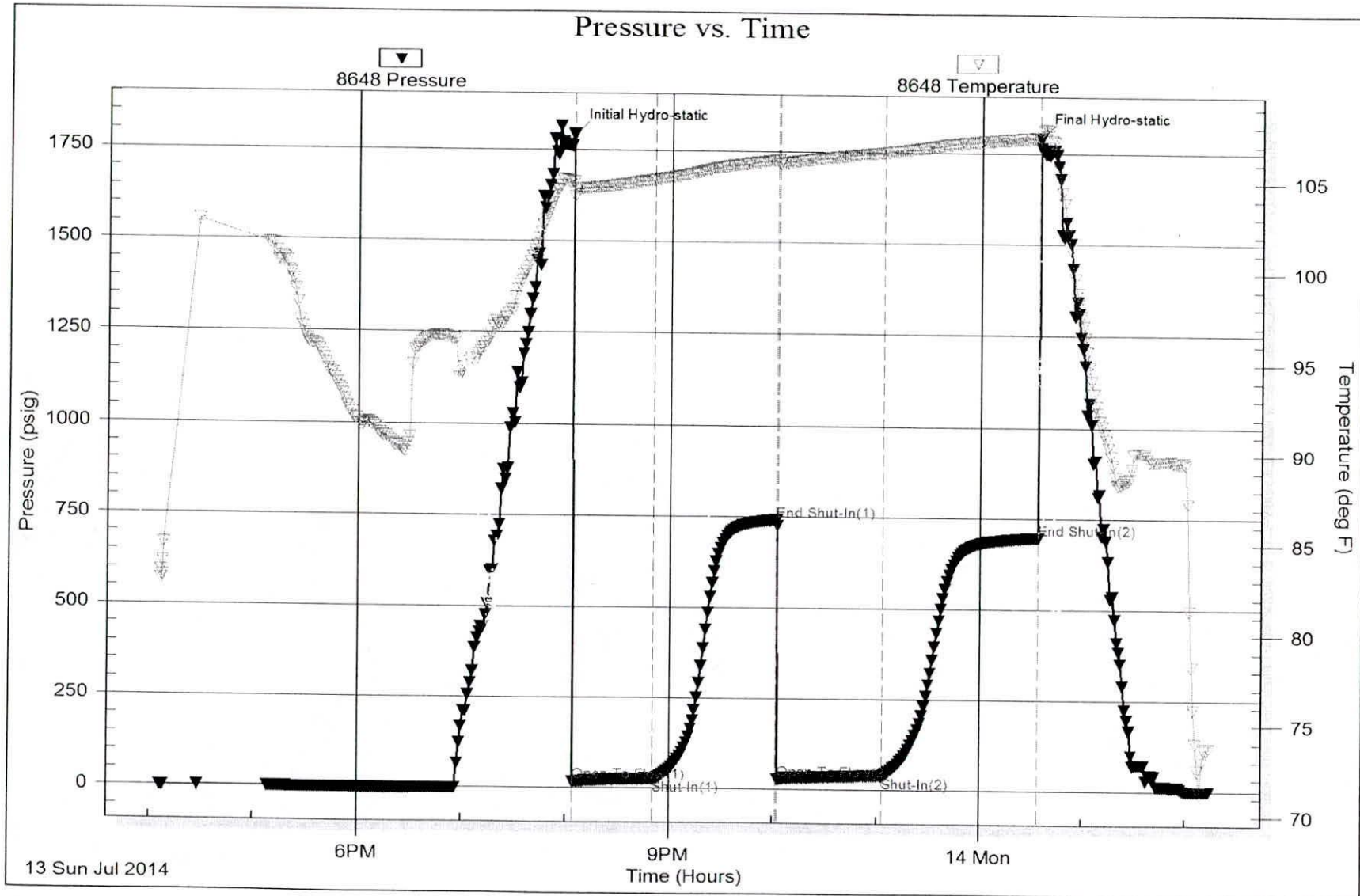
Num Gas Bombs: 0

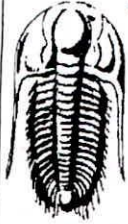
Serial #:

Laboratory Name:

Laboratory Location:

Recovery Comments:





**TRILOBITE
TESTING, INC**

DRILL STEM TEST REPORT

FLUID SUMMARY

Trek AEC LLC

33-6s-20w Rooks KS

155 N. Market STE 170
Wichita KS, 67202

States 1-33

Job Ticket: 54072

DST#: 5

ATTN: Aaron Young

Test Start: 2014.07.14 @ 12:29:00

Mud and Cushion Information

Mud Type: Gel Chem

Cushion Type:

Oil API:

deg API

Mud Weight: 9.00 lb/gal

Cushion Length:

ft

Water Salinity:

ppm

Viscosity: 55.00 sec/qt

Cushion Volume:

bbl

Water Loss: 7.20 in³

Gas Cushion Type:

Resistivity: ohm.m

Gas Cushion Pressure:

psig

Salinity: 1300.00 ppm

Filter Cake: 2.00 inches

Recovery Information

Recovery Table

Length ft	Description	Volume bbl
40.00	OCM, 20%O, 80%M	0.197
30.00	Free Oil, 100%O	0.148

Total Length: 70.00 ft Total Volume: 0.345 bbl

Num Fluid Samples: 0

Num Gas Bombs: 0

Serial #:

Laboratory Name:

Laboratory Location:

Recovery Comments: DID NOT smell gas in pipe.

