

Andrew White

Petroleum Geologist

Scale 1:240 (5"=100') Imperial
Measured Depth Log

Well Name: Mai Trust #1
Location: 26-13S-41W
License Number: API: 15-199-20417
Spud Date: 08/29/14
Surface Coordinates: 1980' FSL, 587' FWL

Region: Wallace Co, KS
Drilling Completed: 09/05/14

Bottom Hole
Coordinates:
Ground Elevation (ft): 3656 K.B. Elevation (ft): 3667
Logged Interval (ft): 3800 To: 5200 Total Depth (ft): 5200
Formation: Mississippian
Type of Drilling Fluid: Chemical

Printed by MUD.LOG from WellSight Systems 1-800-447-1534 www.WellSight.com

OPERATOR

Company: White Exploration, Inc.
Address: 1635 N. Waterfront Pkwy, St. 100
Wichita, KS 67206

GEOLOGIST

Name: Andrew White
Company: White Exploration, Inc.
Address: 1635 N. Waterfront Pkwy, St. 100
Wichita, KS 67206

Remarks

Due to the lack of shows in the samples, and log calculations, the Mai Trust #1 will be plugged and

General Info

Drilling Contractor: Murfin Drilling Rig 22

Logs: Nabors
Compensated Density/Neutron, Dual Induction, Micro, Sonic

Drilling Mud: Mudco/Service Mud, Inc.

Surveys: 4.1@ 515', 1@ 250, 2.6@ 375', 3.3@ 363', 2.5@ 623', 1.9@ 748', 1.4@ 1209', 1.2@ 1511', .4@ 2011', 1.4@ 2502', .4@ 3011', .2@ 3784', .4@ 4012', .7@ 4331, 1.25@ 5200

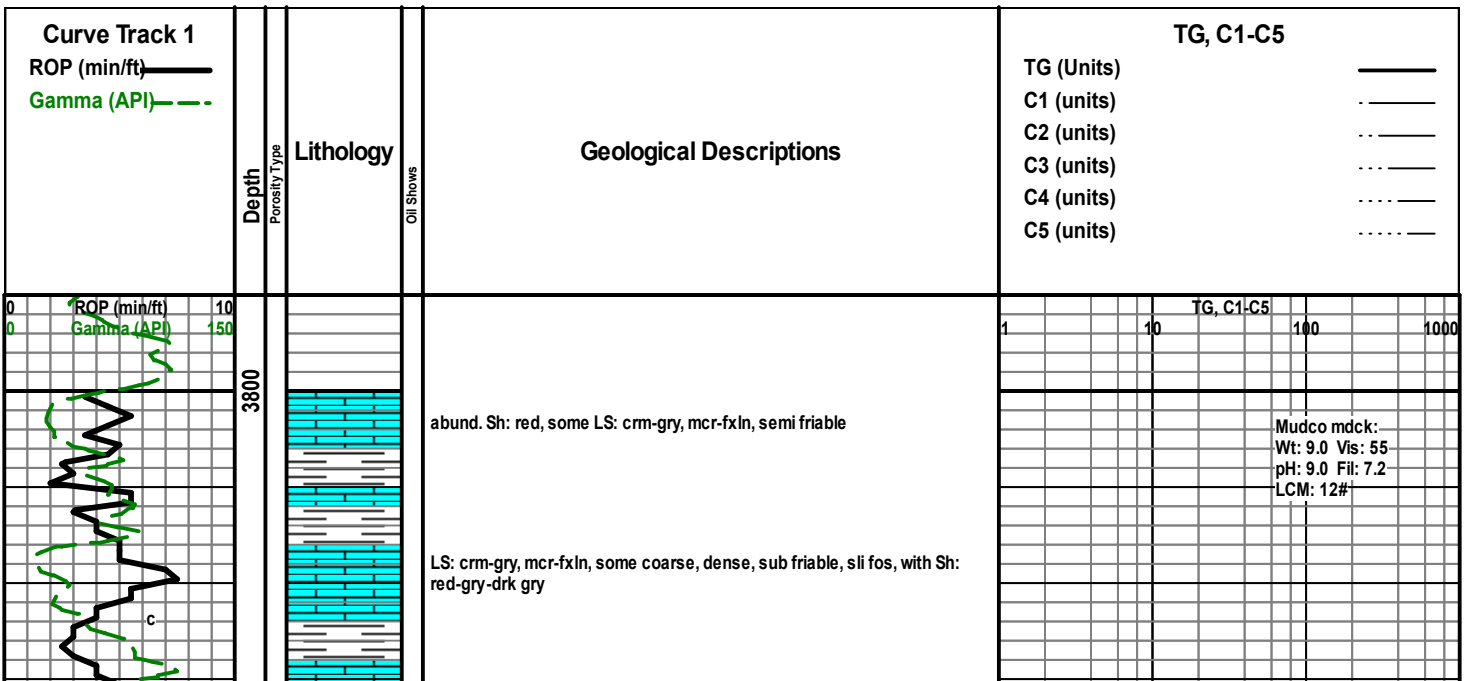
Daily Status

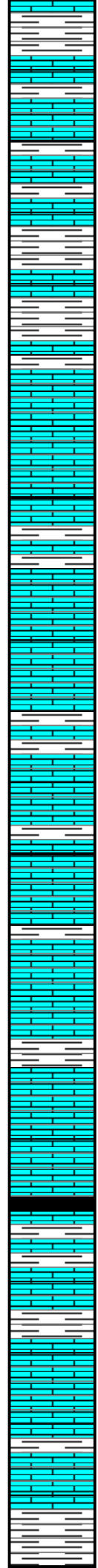
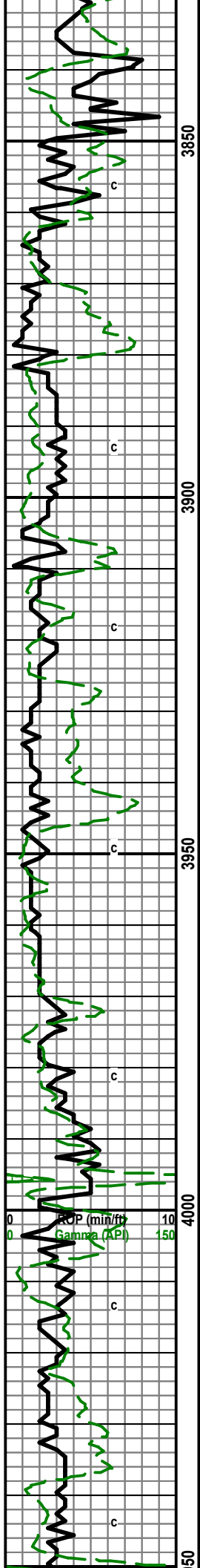
08/29/14: Spud Well, drill to 515'
 08/30/14: run surface casing to 286', 7 joints 13-3/8" 54.5#, set @286' cemented with 300 sacks of Common Cement with 3% CC
 08/31/14: Drilling @ 635'
 09/01/14: Drilling @2820'
 09/02/14: Drilling @3803'
 09/03/14: Making bit trip @4331,
 09/04/14: Drilling @ 4635'
 09/05/14: Drilling @ 5025'
 09/06/14: RTD 5200, Logging

| Mai Trust #1 1980' FSL, 587' FWL 26-13S-41W KB: 3667 | | | | | Oxy Robben A-1 SW-SW-NE 21-13S-41W KB: 3649 Structural Relationship | | | Bradley and Shaw Pearce #1 NE-SE 2-14S-41W KB: 3634 Structural Relationship | | |
|---|--------|---------|------|---------|--|-----|--------|--|--------|-----|
| Formation | Sample | Sub-Sea | Log | Sub-Sea | Sample | Log | Sample | Log | Sample | Log |
| Heebner | 4104 | -437 | 4102 | -435 | 13 | 15 | | | 11 | 13 |
| Lansing | 4152 | -485 | 4152 | -485 | 18 | 18 | | | 22 | 22 |
| BKC | 4506 | -839 | 4506 | -839 | 22 | 22 | | | 23 | 23 |
| Marmaton | 4529 | -862 | 4545 | -878 | 19 | 3 | | | 22 | 6 |
| Cherokee | 4688 | -1021 | 4690 | -1023 | 20 | 18 | | | 17 | 15 |
| Morrow | 4906 | -1239 | 4910 | -1243 | 30 | 26 | | | 26 | 22 |
| Keyes | 5010 | -1343 | 5012 | -1345 | 22 | 20 | | | 53 | 51 |
| Mississippi | 5078 | -1411 | 5090 | -1423 | 28 | 16 | | | 37 | 25 |

ROCK TYPES

| | | | | |
|----------------------|--|---------------------|--|--|
| LITHOLOGY | | | | |
| | | STRINGER | | |
| | | OIL SHOW | | |





Sh: gry-drk gry, some red, some LS: crm-gry, mcrxln, dense,

LS: crm, mcr-fxln, sandy, sli chalky, with Sh: gry-drk gry

LS: A.A., with Sh: drk gry-gry-red

LS: crm-tan, some gry, mcr-fxln, some sandy, sli fos, dense, Sh: lt gry-gry-drk gry

LS: tan-gry, mcrxln, some fxln, sli fos, sli chalk

LS: tan-gry, mcrxln, sli chalky, some Sh: lt gry-gry

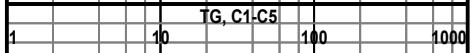
LS: tan-crm, mcrxln, some fxln, sli chalky, some Sh: A.A.

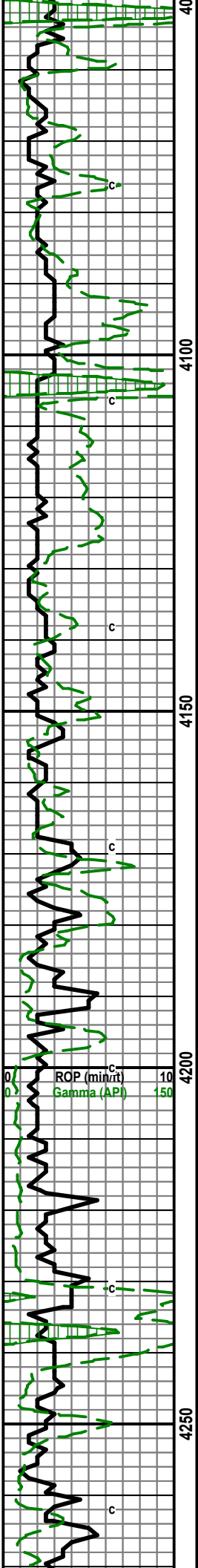
LS: crm-tan, fxln, sli fos, sli chalky, dense, some Sh: A.A. with some blk

LS: crm, mcr-fxln, sli fos, sli chalky, Sh: gry-drk gry-blck

LS: tan-crm, fxln, fos, Sh: gry-lt gry

Mostly Sh: gry-lt gry, some drk gry-red-grn, some LS: crm-tan, mcr-fxln, friable





Mostly Sh: A.A. some LS: crm, some gry, mcrxln, some fxln, dense, sub friable

LS: crm-gry, mcr-fxln, friable, some silty Sh: lt gry

LS: crm-tan, mcrxln, some fxln, dense, Sh: blk-drk gry

Heebner: 4104 (-437)

LS: tan-crm, mcrxln, chalky, Sh: A.A. with some lt gry

LS: crm-tan, some gry, mcr-fxln, chalky, sli fos

Lansing: 4152 (-485)

LS: crm, some tan, mcrxln, few fxln, chalky, sli fos, Sh: gry-drk gry

LS: crm-tan, mcrxln, sli chalky dense,

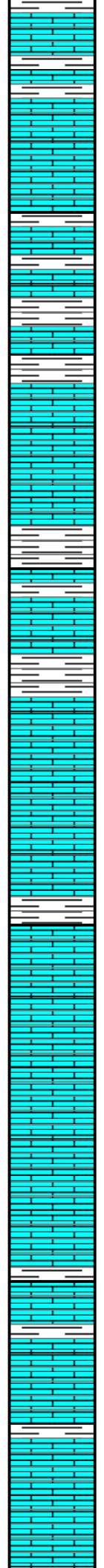
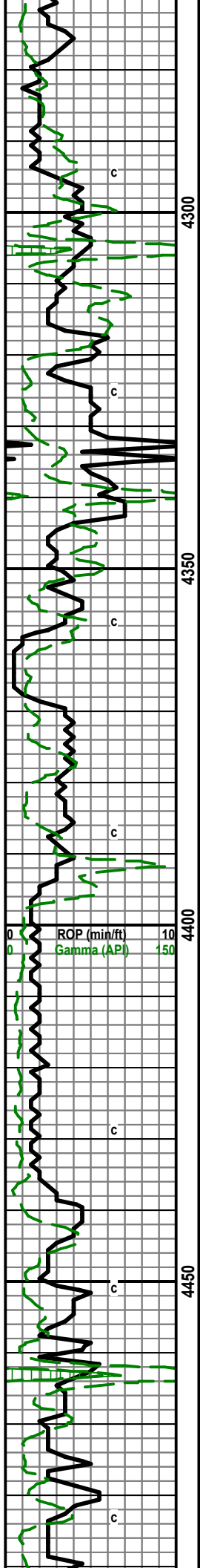
LS: crm, mcrxln, sli cherty, chalky, Sh: lt gry-rd

TG, C1-C5
1 10 100 1000

LS: crm-tan, mcrxln, some fxln, sli chalky, sli cherty

LS: tan-crm, mcrxln, cherty, Sh: drk gry-gry

LS: crm-tan, mcrxln, some fxln, Sh: drk gry-gry



LS: crm, mcrxln, sli chalky, sli cherty, Sh: A.A.

LS: crm, some gry, mcr-fxln, dense, Sh: gry-drk gry, some blk and gm

Mudco mdck:
Wt: 9.3 Vis: 52
pH: 9.0 Fil: 9.6
LCM: 10#

Sh: drk gry-gry-gm, some LS: crm, mcrxln

Sh: A.A. w/ LS: crm, mcrxln, cherty

Bit Trip 4331, rough drilling, pulled PDC, switched to button, geograph not working for few feet

Sh: A.A. w/ LS: crm, mcr-fxln, some gran, some chl

Sh and LS: A.A.

LS: crm-tan-bm, mcr-fxln, sli fos, ool, few pieces with pr-fr vug por

LS: A.A.

LS: tan-crm, mcr-fxln, few pieces ool with fr vug por, sli fos, dense

LS: crm-gry-tan, mcrxln, some fxln, few pieces ool with fr vug por, some chalk, pyrite, some Sh: drk gry-gry

TG, C1-C5
1 10 100 1000

LS: crm-gry-bm, mcrxln, few ool with fr vug por, chalky,

LS: crm-gry, mcrxln, sli ool, chalky

LS: crm-gry, mcrxln, some fxln, sli ool, chalky

LS: crm-gry, mcrxln, some fxln, few pieces ool, chalky, dense

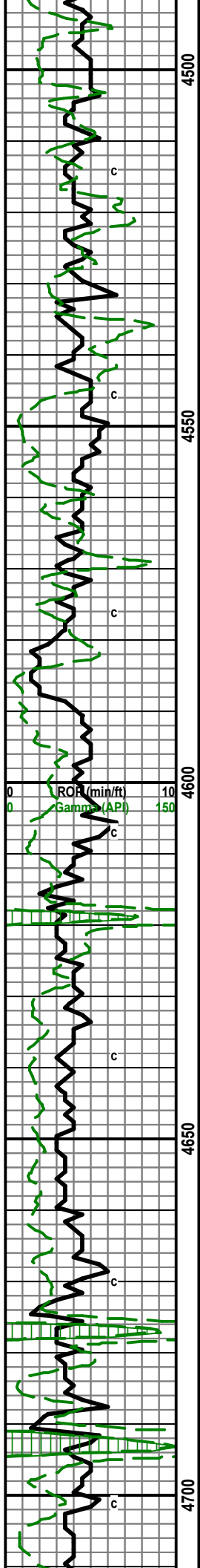
LS: crm-gry, mcrxln, few fxln, dense, sli chalky, some Sh: gry-drk gry

LS: gry-crm, mcrxln, few fxln, dense, sli chalky, pyrite

LS: crm-gry, mcrxln, some fxln, sli chalky, some ool, some fos some Sh: gry-drk gry

LS: gry-crm, some tan, mcr-fxln, few gran, sli chalky, sli fos

LS: crm tan gry, mcr-fxln, sli chalky, sli fos



LS: crm-tan-gry, mcr-fxln, sli chalky, sli fos

BKC: 4506 (-839)

LS: tan, some gry, mcrxln, some fxln, some ool, few pieces of Sh: A.A.

LS: crm-gry, mcr-fxln, few pieces ool, few fos

Marmaton: 4529 (-862)

LS: crm-tan-gry, mcrxln, some fxln, sli fos

LS: crm-tan, some gry, mcrxln, few fxln

LS: crm-tan-gry, mcr-fxln, sli fos,

LS: crm some gry, mcr-fxln, fos, sli cherty

LS: crm, some tan-gry, mcrxln, few fxln, sli fos,

LS: crm-tan-gry, mcrxln, few fxln, sli fos, some Sh: gry-lt gry

LS: tan-crm, mcr-fxln, sli chalky, sli cherty, some Sh: gry-drk gry

Mudco mdck:
Wt: 9.4 Vis: 60
pH: 9.0 Fil: 8.8
LCM: 8#

LS: gry-tan, mcr-fxln, sli cherty, sli fos some Sh: drk gry-gry

TG, C1-C5
1 10 100 1000

LS: tan, mcr-fxln, some gran, sli cherty, sli chalky, Sh: A.A.

LS: and Sh: A.A.

LS: crm-gry-brn, mcrxln-fxln, sli fos, sli cherty, sli chalky

LS: crm-gry, fxln, fos

LS: crm-gry, mcrxln, some fxln, cherty, sli chalky, sli fos

LS: gry-crm, mcr-fxln, cherty, sli chalky, few fos

LS: A.A. with some Sh: drk gry-gry

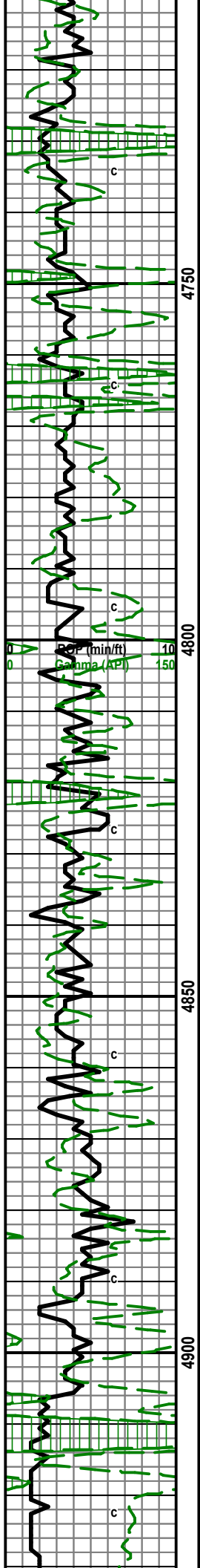
LS: gry-crm-tan, mcr-fxln, some gran, sli chalky, cherty, fos, some Sh: A.A. with some blk

Cherokee Shale: 4688 (-1021)

LS: crm-gry, mcr-fxln, fos, sli chalky, Sh: blk-drk gry

LS: gry, fxln, sli fos, sli cherty

LS: gry some crm mcr fxln cherty sli chalky



LS: gry, some crm, mcr-fxln, fos, sli ool, sli cherty, some Sh: drk gry-blck

LS: A.A. with increase in Sh: drk gry-gry, some blck

LS: crm-gry, mcrxln, some fxln, sli cherty, sli chalky, fos, Sh: A.A.

LS: crm-gry, mcr-fxln, fos, Sh: gry-drk gry-blck

LS: gry-crm, mcr-fxln, sli cherty, sli fos, few ool, some Sh: A.A.

LS: gry-crm, mcr-fxln, sli cherty, fos

LS: A.A. with some Sh: drk gry-gry some blck

LS: gry some crm, fxln, some mcrxln, sli cherty, sli fos, some Sh: drk gry-blck, some red and gm

LS: gry-crm, mcrxln, few fxln, sli fos, sli cherty, some Sh: drk gry-blck

LS: gry-tan, mcrxln-fxln, few gran, fos, sli cherty, sli chalky, Sh: A.A.

LS: A.A. with some crm, Sh: gry-lt gry-drk gry

LS: gry-crm-tan, mcrxln, some fxln, sli cherty, sli chalky, Sh: A.A.

LS: gry-crm, fxln, some mcrxln, fos, sli cherty, sli chalky, few Sh: drk gry-blck

LS: A.A.

LS: gry-tan-crm, fxln, some mcrxln, sli cherty, some ool, some sli fos, with Sh: drk gry-blck

LS: gry-crm, mcr-fxln, sli cherty, sli chalky, sli fos

LS: A.A.

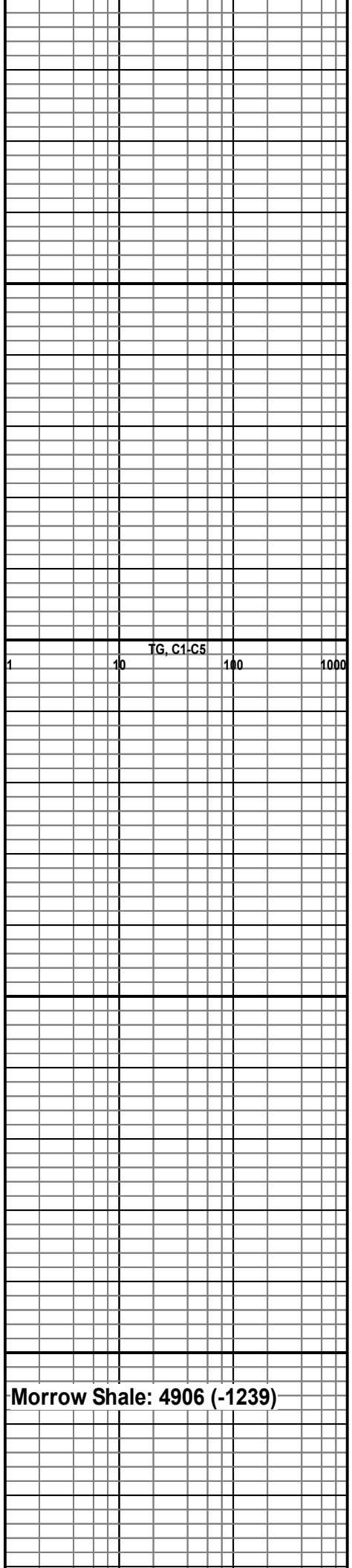
LS: gry-crm, mcr-fxln, some mxln, sli cherty, sli chalky, fos, some Sh: drk gry-blck

LS: A.A.

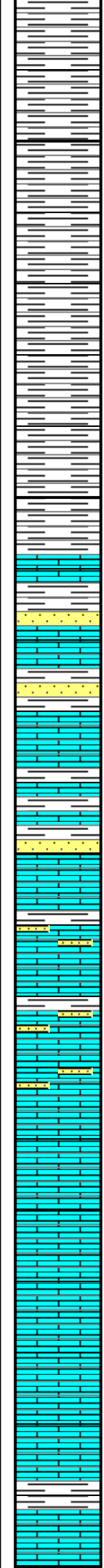
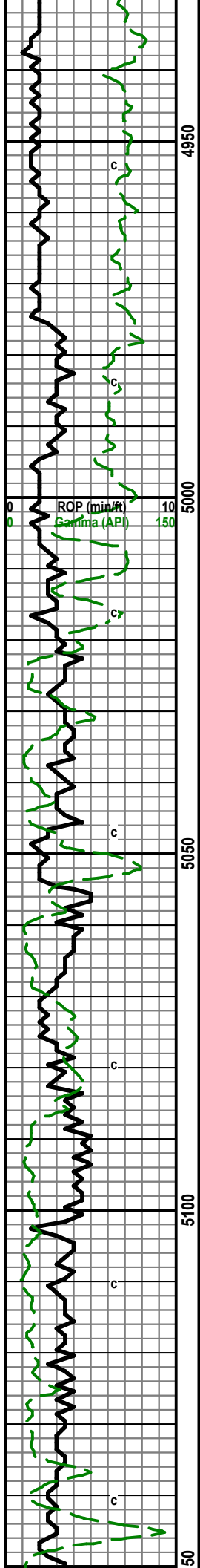
LS: crm-gry, mcrxln, sli chalky, sli fos, some Sh: drk gry-blck-gry

Sh: drk gry-gry, some SS: clear-opaque, f-m gm, friable, subangular, well sorted, pr vis por, no odor, fluor or show

Sh: A.A. with S.S.A.A.



Morrow Shale: 4906 (-1239)



Sh: gry-drk gry-lt gry, still a few SS cluster: A.A.

Sh: and SS: A.A.

Sh: gry-drk gry-lt gry

Sh: A.A.

Sh: gry-drk gry, some lt gry some gm

Sh: A.A.

Sh: gry-lt gry-drk gry-gm

Sh: A.A. with some SS: clear, f gm, well sorted, sub rounded, dense, very glauc, no odor, fluor or show, and LS: crm-tan, mcrxln

Sh: drk gry-gry, LS: A.A. with few SS clusters: A.A.

Sh: A.A. with some gm, a few SS cluster: A.A., LS: crm-tan, mcr-fxln, sli fos,

LS: A.A. with few pieces of SS and some Sh: A.A.

LS: crm-tan, fxln some mcrxln, fos, dense,

LS: A.A. with some SS: clusters, f-m gm, sub round, well sorted, sli friable, no-por vis por, no odor, fluor, or show

LS: A.A. with some SSA.A. part glauc, some Sh: gry

LS: crm-tan, mcrxln, sli fos, some SS: f-m gm, sub round, well sorted part friable, glauc, no show

LS: crm-tan, mcr-fxln, fos

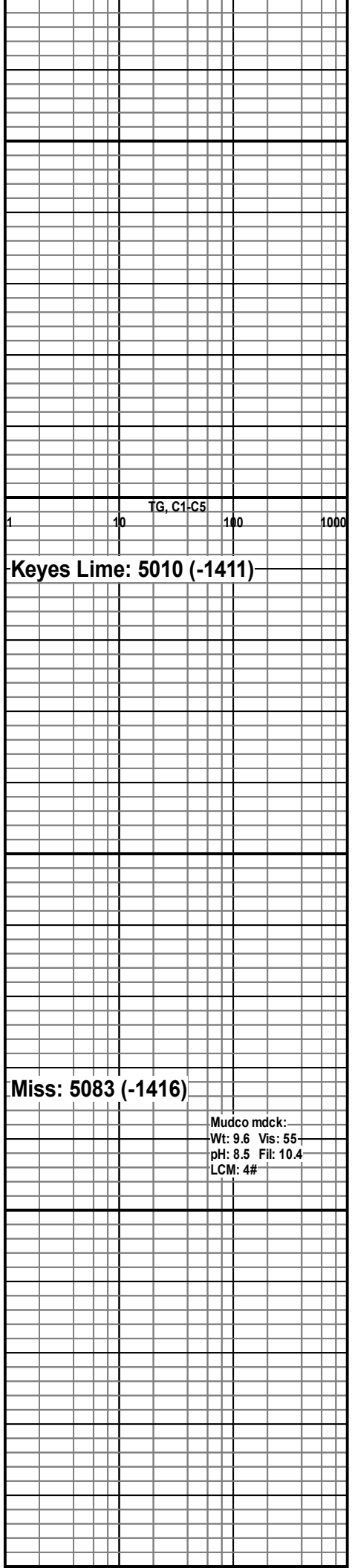
LS: crm-tan, mcr-fxln, fos, sli chalky, some chert,

LS: crm-gry, mcr-fxln, fos, sli chalky, some sli ool, chert,

LS: crm-tan, mcr-fxln, sli chalky, cherty, sli fos

LS: A.A.

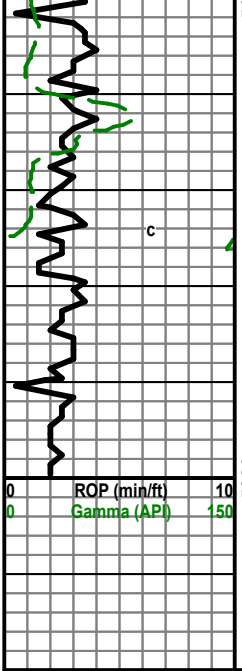
LS: A.A. sample had a good amount of Sh: gry-drk gry



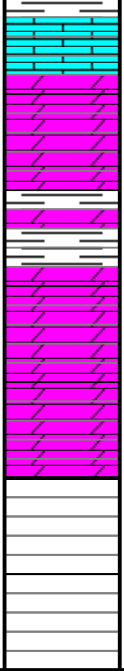
Keys Lime: 5010 (-1411)

Miss: 5083 (-1416)

Mudco mdck:
Wt: 9.6 Vis: 55
pH: 8.5 Fil: 10.4
LCM: 4#



5200



LS: crm-gry, f-mxln, sli dolo, sample still contains Sh: A.A.

Dolo: brn, mxln, sli fos

Dolo: A.A. some Sh: drk gry-gry

Dolo: brn, mcrxln, sli fos

RTD: 5200

LTD: 5204

ROP (min/ft) 10
Gamma (API) 150

TG, C1-C5
1 10 100 1000