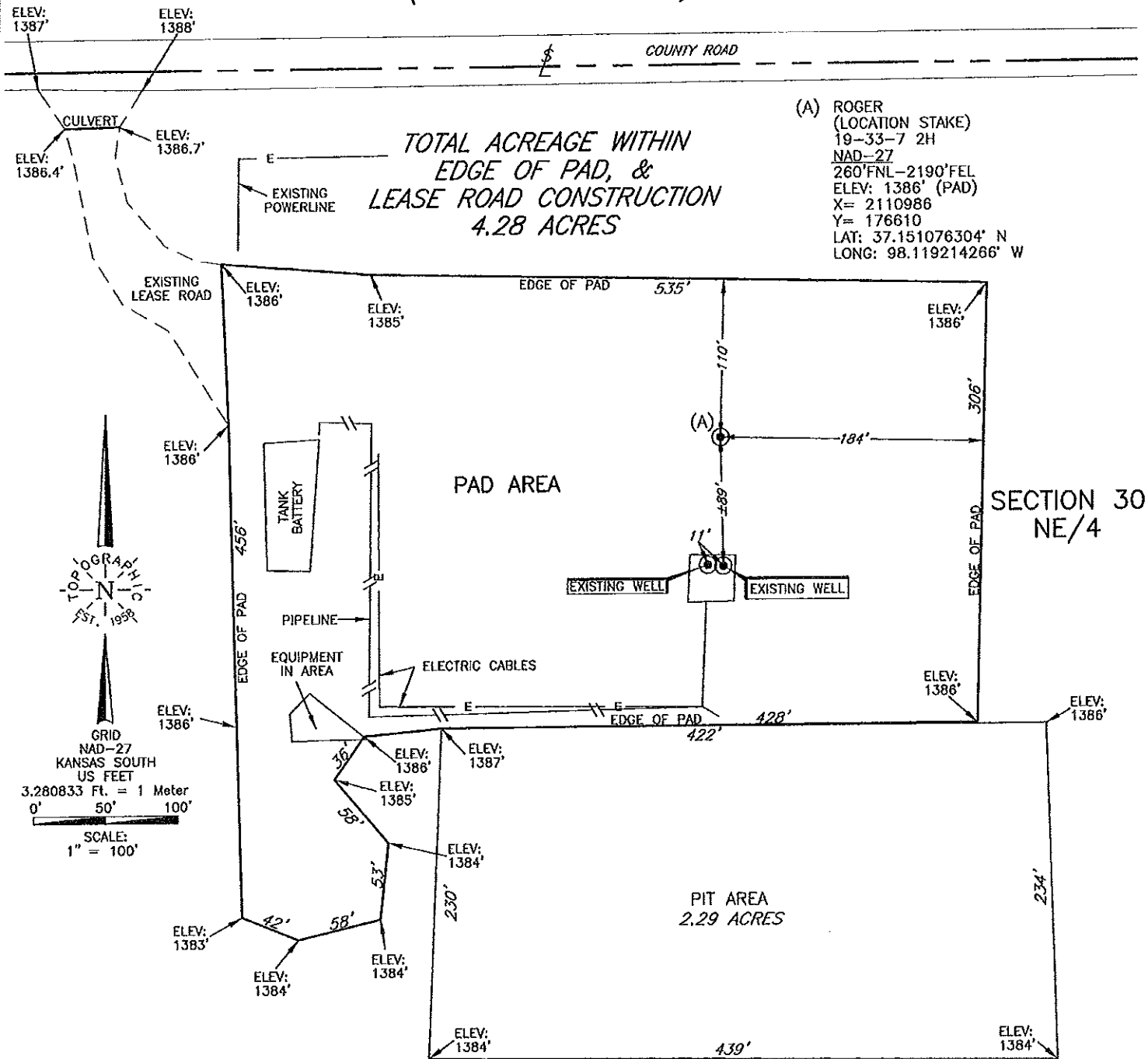


# T 33 S - R 7 W

(PRINCIPAL MERIDIAN)



*PLAT SHOWING  
EXISTING PAD AREA IN THE NE/4  
OF SECTION 30, T33S-R7W, P.M.,  
HARPER COUNTY, KANSAS*

This plat was prepared exclusively for  
**TAPSTONE ENERGY**

and may not be relied upon by any other entity without the written consent of Topographic Land Surveyors of Oklahoma.  
*SURVEYING AND MAPPING BY*  
**TOPOGRAPHIC LAND SURVEYORS**  
6709 N. Classon, Okla. City, OK. 73116 (405) 843-4847  
Certificate of Authorization No. LS-99, Exp. December 31, 2015

SCALE: 1" = 100'
DATE: 09-16-2014
FILE: L4011A.DWG
DRAWING NUMBER: 120010-L4-011-A
SHEET 1 OF 1

NO.	REVISION	DATE	BY
SURV. BY:	RL	09-14-2014	
DRAWN BY:	JP		
APPROVED BY:	LG		