

Spot Information	
Latitude	37.497714
Longitude	-98.559609
Section	Sec-30 Twp-29 S Rng-11 W
Quarter Calls	NW SW NE NE
County	Pratt
KCC District	1
SGA	Yes(TBL3)
Hutch Salt	Yes
Elevation	1857 ft

Water Well Information

WWC5 Records: Five Closest Wells & All Public Water Supplies Within a Mile

Dist *	Dist **	Dist ***	Type	Status	Depth	Water Lvl	Owner	WWC5
1322 ft		1319ft	Domestic	CONSTRUCTED	93 ft	65 ft	Hartman, Rose	PDF
1456 ft		1458ft	Oil Field Water Supply	CONSTRUCTED	105 ft		Search Drilling Co.	PDF
1474 ft		1470ft	Oil Field Water Supply	CONSTRUCTED	105 ft	60 ft	H-30 Drilling Inc.	PDF
1662 ft	1690ft	1658ft	Monitoring well/observation/piezometer	CONSTRUCTED	204 ft	77.6 ft	Blackwelder, Kenneth	scan
1662 ft	1690ft	1658ft	Irrigation	CONSTRUCTED	171 ft	77 ft	Blackwelder, Kenneth	PDF

* This distance is calculated using geographic tools and a PLSS data layer.

** This distance is calculated using the pythagorean theorem and assuming that the section is exactly 5280 feet square. Also, if the water well is within a mile of the well spot, but is in a neighboring section, then this distance is not calculated.

*** This distance is calculated using UTM coordinates.

KGS Map Viewer - Oil and Gas Wells and Fields

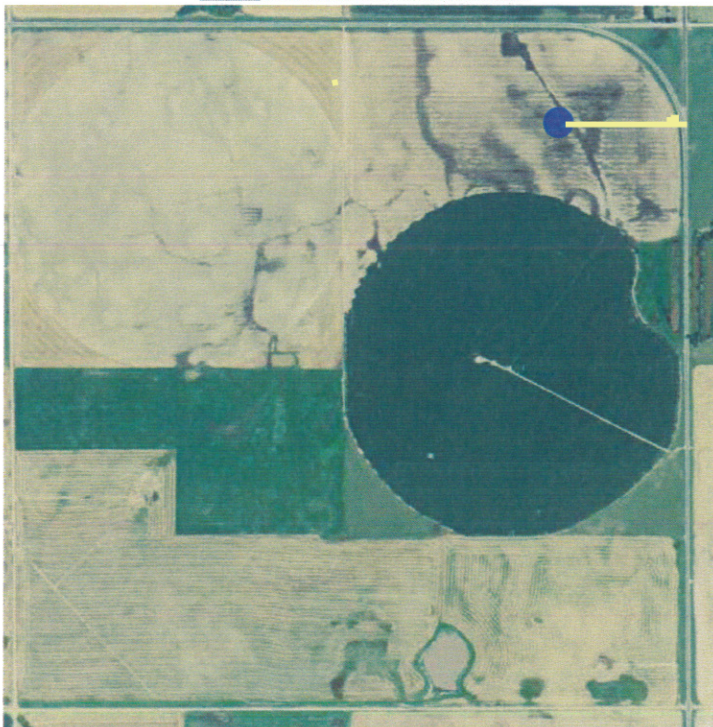
[Section 30-29S-11W \(Opens in separate window\)](#)

Available Fields

Quarter Calls

Harding	S2
---------	----

2012 | 2010 | 2006 | 2002 | Topo



Blackwelder 1-30
Tank Battery Site
& Road
30-29-11W