



## DRILL STEM TEST REPORT

Prepared For: **Alan Vonfeldt**

PO Box 611  
Russell, KS 67665

ATTN: Steve Reed

**Michaelis #2**

**33-14S-13W Russell,KS**

Start Date: 2014.09.09 @ 13:37:42

End Date: 2014.09.09 @ 19:00:12

Job Ticket #: 60902                      DST #: 2

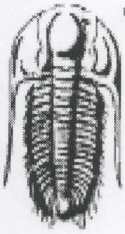
Trilobite Testing, Inc

1515 Commerce Parkway Hays, KS 67601

ph: 785-625-4778 fax: 785-625-5620

Printed: 2014.09.12 @ 14:29:30

Alan Vonfeldt    33-14S-13W Russell,KS    Michaelis #2    DST # 2    LKC "D-F"    2014.09.09



**TRILOBITE  
TESTING, INC.**

## DRILL STEM TEST REPORT

Alan Vonfeldt

33-14S-13W Russell,KS

PO Box 611  
Russell, KS 67665

**Michaelis #2**

Job Ticket: 60902

DST#: 2

ATTN: Steve Reed

Test Start: 2014.09.09 @ 13:37:42

### GENERAL INFORMATION:

Formation: **LKC "D-F"**

Deviated: No Whipstock: ft (KB)

Time Tool Opened: 14:47:12

Time Test Ended: 19:00:12

Test Type: Conventional Bottom Hole (Reset)

Tester: Brannan Lonsdale

Unit No: 62

Interval: **2917.00 ft (KB) To 2965.00 ft (KB) (TVD)**

Reference Elevations: 1725.00 ft (KB)

Total Depth: 2965.00 ft (KB) (TVD)

1718.00 ft (CF)

Hole Diameter: 7.88 inches Hole Condition: Fair

KB to GR/CF: 7.00 ft

**Serial #: 8651**

**Inside**

Press@RunDepth: 27.31 psig @ 2918.00 ft (KB)

Capacity: 8000.00 psig

Start Date: 2014.09.09 End Date: 2014.09.09

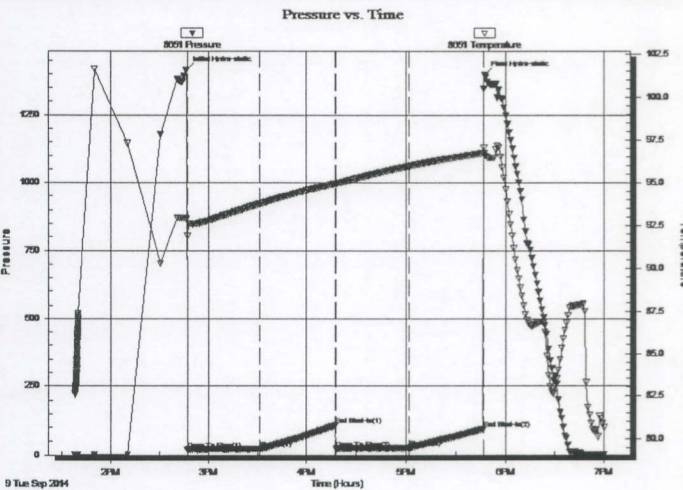
Last Calib.: 2014.09.09

Start Time: 13:37:43 End Time: 19:00:12

Time On Btm: 2014.09.09 @ 14:46:42

Time Off Btm: 2014.09.09 @ 17:47:42

TEST COMMENT: 45- IF- Slowly built to 1 3/4"  
45- IS- No blow  
45- FF- Surface blow  
45- FS- No blow



### PRESSURE SUMMARY

Time (Min.)	Pressure (psig)	Temp (deg F)	Annotation
0	1414.53	92.87	Initial Hydro-static
1	21.28	91.84	Open To Flow (1)
45	23.66	93.74	Shut-In(1)
91	106.64	94.92	End Shut-In(1)
91	22.82	94.93	Open To Flow (2)
135	27.31	95.94	Shut-In(2)
180	94.06	96.71	End Shut-In(2)
181	1396.83	96.70	Final Hydro-static

### Recovery

Length (ft)	Description	Volume (bbl)
20.00	SOCM, 5%O 95%M	0.27

\* Recovery from multiple tests

### Gas Rates

Choke (inches)	Pressure (psig)	Gas Rate (Mcf/d)





**TRILOBITE  
TESTING, INC**

## DRILL STEM TEST REPORT

TOOL DIAGRAM

Alan Vonfeldt

33-14S-13W Russell,KS

PO Box 611  
Russell, KS 67665

Michaelis #2

Job Ticket: 60902

DST#: 2

ATTN: Steve Reed

Test Start: 2014.09.09 @ 13:37:42

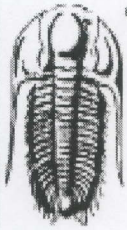
### Tool Information

Drill Pipe:	Length: 2926.00 ft	Diameter: 3.75 inches	Volume: 39.97 bbl	Tool Weight: 2000.00 lb
Heavy Wt. Pipe:	Length: ft	Diameter: 2.75 inches	Volume: - bbl	Weight set on Packer: 25000.00 lb
Drill Collar:	Length: 0.00 ft	Diameter: 2.25 inches	Volume: 0.00 bbl	Weight to Pull Loose: 50000.00 lb
		Total Volume: - bbl		Tool Chased 0.00 ft
Drill Pipe Above KB:	29.00 ft			String Weight: Initial 48000.00 lb
Depth to Top Packer:	2917.00 ft			Final 48000.00 lb
Depth to Bottom Packer:	ft			
Interval between Packers:	48.00 ft			
Tool Length:	68.00 ft			
Number of Packers:	2	Diameter: 6.75 inches		

Tool Comments:

Tool Description	Length (ft)	Serial No.	Position	Depth (ft)	Accum. Lengths
Change Over Sub	1.00			2898.00	
Shut In Tool	5.00			2903.00	
Hydraulic tool	5.00			2908.00	
Packer	5.00			2913.00	20.00 Bottom Of Top Packer
Packer	4.00			2917.00	
Stubb	1.00			2918.00	
Recorder	0.00	8651	Inside	2918.00	
Recorder	0.00	8655	Outside	2918.00	
Perforations	10.00			2928.00	
Change Over Sub	1.00			2929.00	
Drill Pipe	32.00			2961.00	
Change Over Sub	1.00			2962.00	
Bullnose	3.00			2965.00	48.00 Bottom Packers & Anchor

**Total Tool Length: 68.00**



**TRILOBITE  
TESTING, INC**

# DRILL STEM TEST REPORT

**FLUID SUMMARY**

Alan Vonfeldt

**33-14S-13W Russell,KS**

PO Box 611  
Russell, KS 67665

**Michaelis #2**

Job Ticket: 60902

**DST#: 2**

ATTN: Steve Reed

Test Start: 2014.09.09 @ 13:37:42

## Mud and Cushion Information

Mud Type: Gel Chem

Cushion Type:

Oil API:

deg API

Mud Weight: 9.00 lb/gal

Cushion Length:

ft

Water Salinity:

ppm

Viscosity: 52.00 sec/qt

Cushion Volume:

bbl

Water Loss: 8.77 in<sup>3</sup>

Gas Cushion Type:

Resistivity: ohm.m

Gas Cushion Pressure:

psig

Salinity: 2250.00 ppm

Filter Cake: inches

## Recovery Information

Recovery Table

Length ft	Description	Volume bbl
20.00	SOCM, 5%O 95%M	0.273

Total Length: 20.00 ft      Total Volume: 0.273 bbl

Num Fluid Samples: 0

Num Gas Bombs: 0

Serial #:

Laboratory Name:

Laboratory Location:

Recovery Comments:

Serial #: 8651

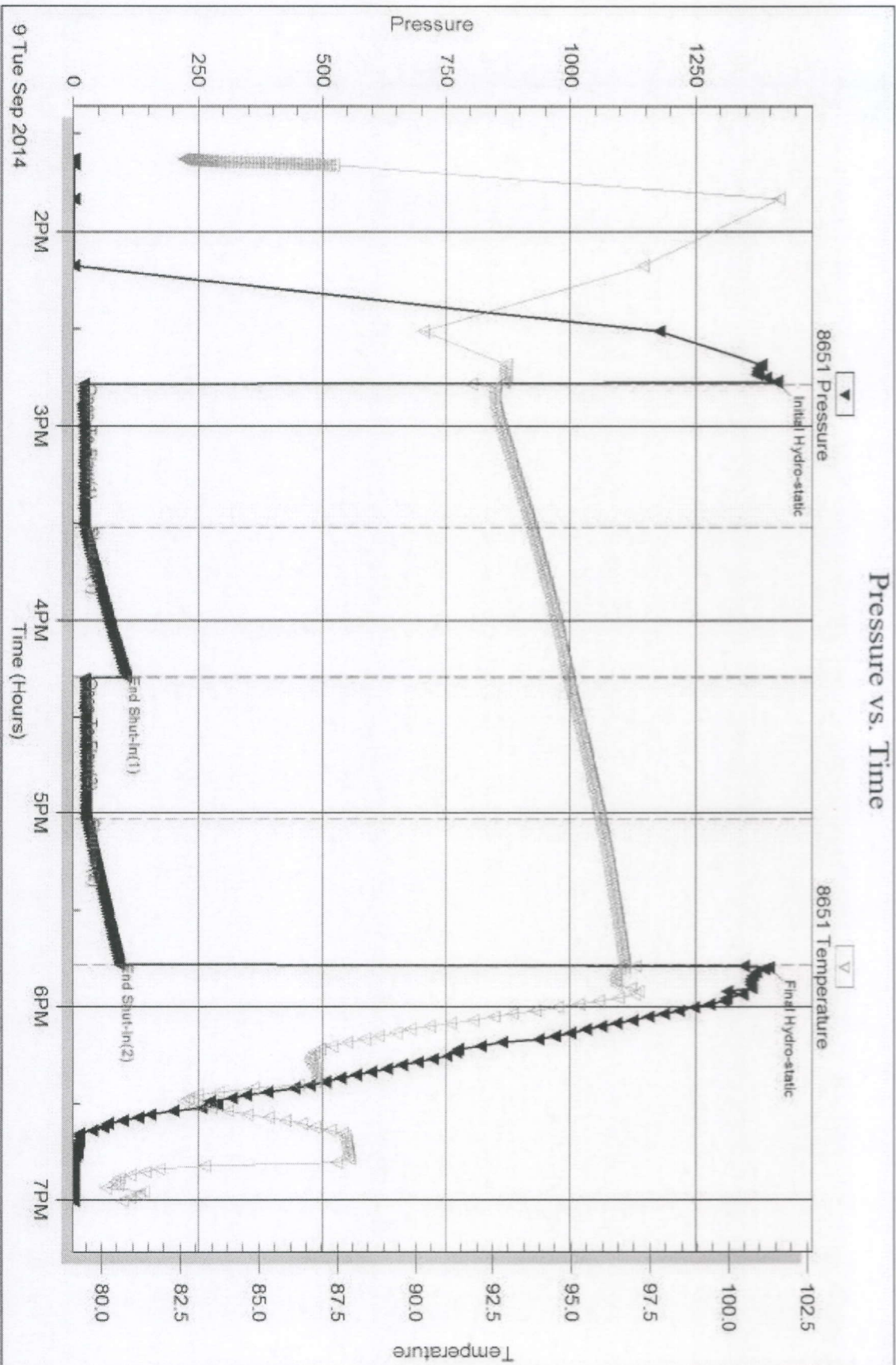
Inside

Alan Vorfeldt

Machine #2

DST Test Number: 2

### Pressure vs. Time



Tribble Testing, Inc

Ref. No: 60902

Printed: 2014.09.12 @ 14:29:31

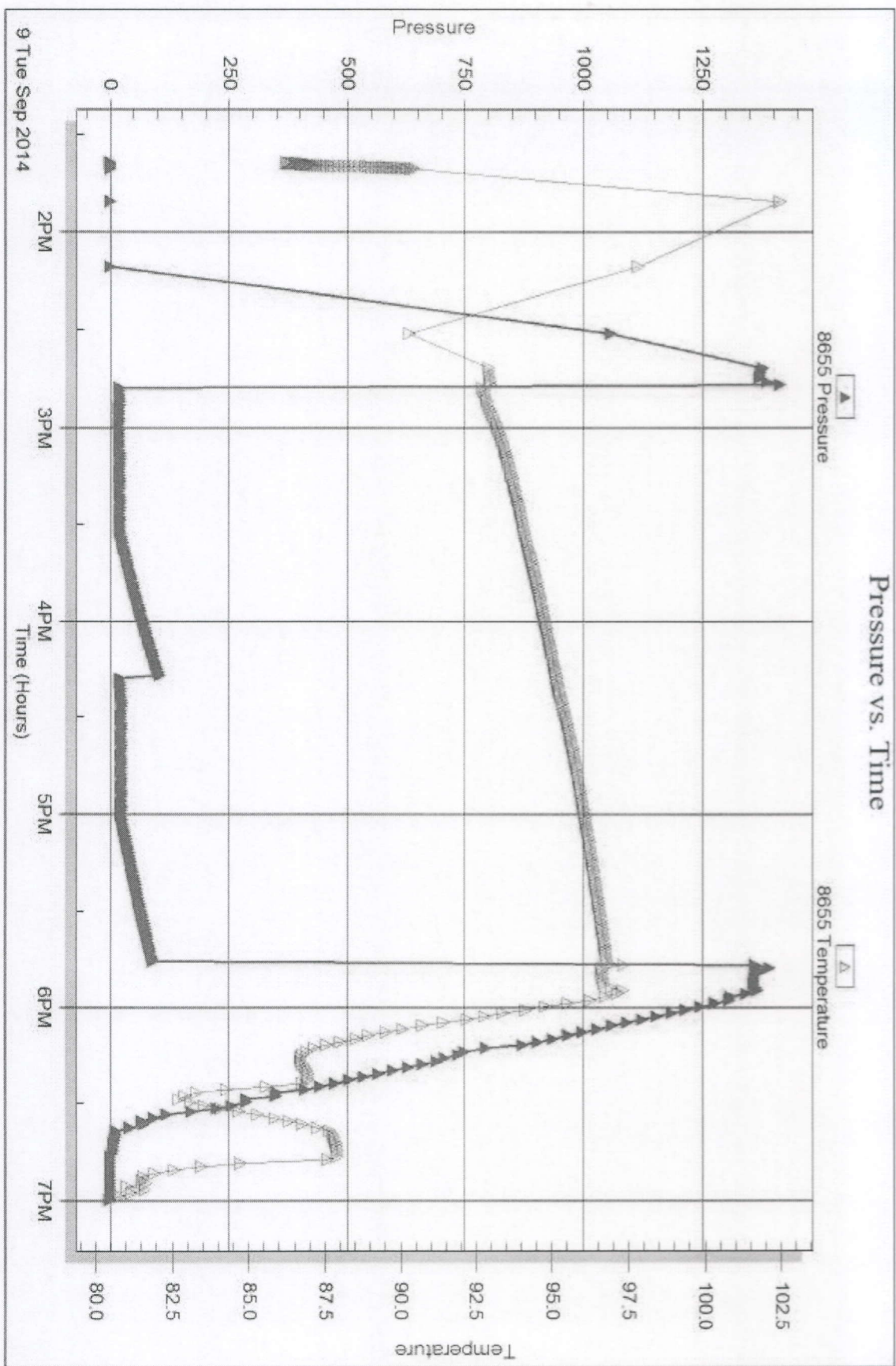
Serial #: 8655

Outside Alan Vonfeldt

Michaelis #2

DST Test Number: 2

### Pressure vs. Time



Tribble Testing, Inc

Ref. No: 60902

Printed: 2014.09.12 @ 14:29:31