



DRILL STEM TEST REPORT

Prepared For: **F.G. Holl Company LLC**

9431 East Central Suite 100
Wichita, Kansas 67206-2563

ATTN: Rene Husted

Kufeld #1-19

19-19s18w Barton

Start Date: 2014.09.13 @ 00:00:00

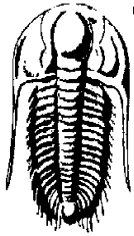
End Date:

Job Ticket #: 60373

DST #: 7

Trilobite Testing, Inc
1515 Commerce Parkway Hays, KS 67601
ph: 785-625-4778 fax: 785-625-5620

Printed: 2014.09.13 @ 17:19:28



TRILOBITE TESTING, INC.

DRILL STEM TEST REPORT

F.G. Holl Company LLC
 9431 East Central Suite 100
 Wichita, Kansas 67206-2563
 ATTN: Rene Husted

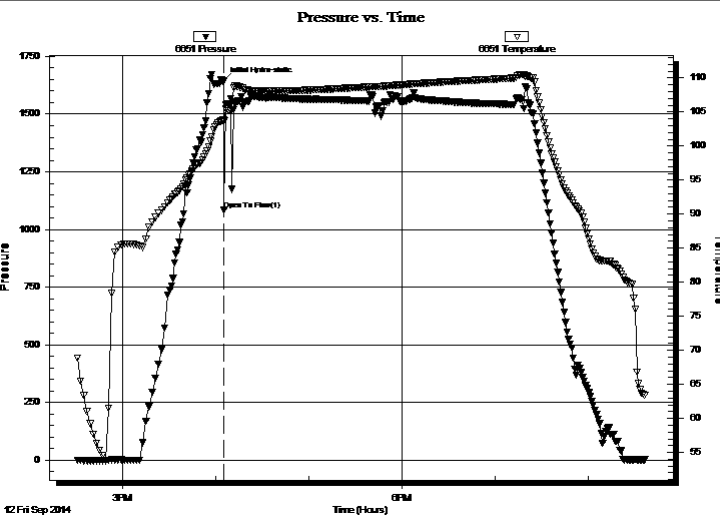
19-19s18w Barton
Kufeld #1-19
 Job Ticket: 60373 **DST#: 7**
 Test Start: 2014.09.13 @ 00:00:00

GENERAL INFORMATION:

Formation: **Kansas City "F"**
 Deviated: No Whipstock: ft (KB)
 Time Tool Opened:
 Time Test Ended:
Interval: 3380.00 ft (KB) To 3381.00 ft (KB) (TVD)
 Total Depth: 3315.00 ft (KB) (TVD)
 Hole Diameter: 7.88 inches Hole Condition: Fair
 Test Type: Conventional Straddle (Initial)
 Tester: Gene Budig
 Unit No: S4
 Reference Elevations: 1915.00 ft (KB)
 1907.00 ft (CF)
 KB to GR/CF: 8.00 ft

Serial #: 6651 Inside
 Press@RunDepth: psig @ 3309.00 ft (KB) Capacity: 8000.00 psig
 Start Date: 2014.09.12 End Date: 2014.09.12 Last Calib.: 2014.09.13
 Start Time: 14:31:00 End Time: 20:36:30 Time On Btm: 2014.09.12 @ 16:05:00
 Time Off Btm:

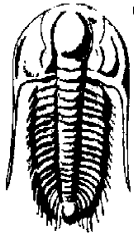
TEST COMMENT: 1st Openig 30 Minutes Good blow bottom of the bucket in 1 min. decreased to very weak blow
 1st Shut-In 60 Minutes
 2nd Opening 35 Minutes-no blow flushed tool good surge weak blow died flushed tool 3 more times same results
 2nd Shut-In 60 Minutes



PRESSURE SUMMARY			
Time (Min.)	Pressure (psig)	Temp (deg F)	Annotation
0	1643.23	103.85	Initial Hydro-static
1	1086.32	103.76	Open To Flow (1)

Recovery		
Length (ft)	Description	Volume (bbl)
240.00	heavy mud	3.37

Gas Rates			
	Choke (inches)	Pressure (psig)	Gas Rate (Mcf/d)



**TRILOBITE
TESTING, INC.**

DRILL STEM TEST REPORT

TOOL DIAGRAM

F.G. Holl Company LLC

19-19s18w Barton

9431 East Central Suite 100
Wichita, Kansas 67206-2563

Kufeld #1-19

Job Ticket: 60373

DST#: 7

ATTN: Rene Husted

Test Start: 2014.09.13 @ 00:00:00

Tool Information

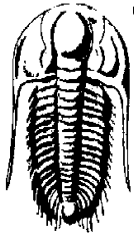
Drill Pipe:	Length: 3277.00 ft	Diameter: 3.80 inches	Volume: 45.97 bbl	Tool Weight: 2000.00 lb
Heavy Wt. Pipe:	Length: 0.00 ft	Diameter: 2.86 inches	Volume: 0.00 bbl	Weight set on Packer: 20000.00 lb
Drill Collar:	Length: 0.00 ft	Diameter: 2.25 inches	Volume: 0.00 bbl	Weight to Pull Loose: 75000.00 lb
			<u>Total Volume: 45.97 bbl</u>	Tool Chased 0.00 ft
Drill Pipe Above KB:	25.00 ft			String Weight: Initial 50000.00 lb
Depth to Top Packer:	3280.00 ft			Final 50000.00 lb
Depth to Bottom Packer:	3311.00 ft			
Interval between Packers:	31.00 ft			
Tool Length:	68.00 ft			
Number of Packers:	3	Diameter: 6.75 inches		

Tool Comments:

Tool Description	Length (ft)	Serial No.	Position	Depth (ft)	Accum. Lengths
------------------	-------------	------------	----------	------------	----------------

Shut-In Tool	5.00			3257.00	
Hydraulic Tool	5.00			3262.00	
Jars	6.00			3268.00	
Safety Joint	2.00			3270.00	
Top Packer	5.00			3275.00	
Packer	5.00			3280.00	28.00 Bottom Of Top Packer
Anchor	28.00			3308.00	
Recorder	1.00	6651	Inside	3309.00	
Recorder	1.00	8878	Outside	3310.00	
Blank Off Sub	1.00			3311.00	31.00 Tool Interval
Packer	5.00			3316.00	
Recorder	1.00		Outside	3317.00	
Bull Plug	3.00			3320.00	9.00 Bottom Packers & Anchor

Total Tool Length: 68.00



**TRILOBITE
TESTING, INC.**

DRILL STEM TEST REPORT

FLUID SUMMARY

F.G. Holl Company LLC

19-19s18w Barton

9431 East Central Suite 100
Wichita, Kansas 67206-2563

Kufeld #1-19

Job Ticket: 60373

DST#: 7

ATTN: Rene Husted

Test Start: 2014.09.13 @ 00:00:00

Mud and Cushion Information

Mud Type: Gel Chem

Cushion Type:

Oil API:

deg API

Mud Weight: 9.00 lb/gal

Cushion Length:

ft

Water Salinity:

ppm

Viscosity: 54.00 sec/qt

Cushion Volume:

bbbl

Water Loss: 9.59 in³

Gas Cushion Type:

Resistivity: ohm.m

Gas Cushion Pressure:

psig

Salinity: 6200.00 ppm

Filter Cake: 1.00 inches

Recovery Information

Recovery Table

Length ft	Description	Volume bbbl
240.00	heavy mud	3.367

Total Length: 240.00 ft Total Volume: 3.367 bbl

Num Fluid Samples: 0

Num Gas Bombs: 0

Serial #:

Laboratory Name:

Laboratory Location:

Recovery Comments:

