

WELLSITE GEOLOGIST'S REPORT

RENE HUSTEAD
CONSULTANT GEOLOGIST



Scale 1:240 (5"=100') Imperial
Measured Depth Log

Well Name: KUFELD NO1-19
Well Id:

Location: SEC-19-T19S-R14W
License Number: 15-009-26-023-0000
Spud Date: SEPT 4-2014
Surface Coordinates: C N/2 SW SW

Region: Barton Co
Drilling Completed: SEPT 19 2014

Bottom Hole Coordinates: VERTICAL
Ground Elevation (ft): 1907' **K.B. Elevation (ft):** 1915'
Logged Interval (ft): 1700' **To: 3770'** **Total Depth (ft):** 3770'
Formation: LANSING/KC AND ARBUCKLE
Type of Drilling Fluid: STARCH/CHEMICAL

Printed by WellSight Log Viewer from WellSight Systems 1-800-447-1534 www.WellSight.com

OPERATOR:

Company: F.G. Holl Company LLC
Address: 9431 E. Central, Suite 100
Wichita, Kansas 67206

DRILLING CONTRACTOR:

DUKE RIG #2
Double derrick; drill pipe 4.5' X H (16.6#); collars 6.25 x2.25 x482'; Bit; 7 7/8, J2HA20QL #1410643, 3-15's;
Reference datum 8 ft above ground level. Poor Boy's (Martin- Decker) mechanical geologist. Dion Vasquez
-Toolpusher

SURFACE CASING:

Surface casing -8 5/8 inches set at 850' with 400 sacks of cement
Production casing -5 1/2 inches set at 3766' with 150 sacks of cement

CIRCULATION SYSTEM:

Pump Make: EWCO, Pump model: 14W400, liner size 6, stroke 14. Starch mud @ 1700' to 2552', Chemical mud @ 2552' to TD
Mud/Co/Service Mud, Inc.-Jason Whiting-Great Bend, Ks-620-282-0556

GAS DETECTION SYSTEM:

MBC Well Logging and Leasing -Analog Gas Detection.

OPEN HOLE LOGS:

DN (PE)-HIGH RES FROM B/KC TO TD-DOLO MATRIX AND FRACFINDER OVER ARBUCKLE, DI (SP)-GAMMA RAY FROM SURFACE TO TD, ML-Sonic, Fracfinder, ; Pioneer Energy Services, Hays, KS, ; Log total depth (3768') was 2 ft short to rotary total depth (3770').

COMPLETION:

PRODUCTION CASING SET ON ARBUCKLE

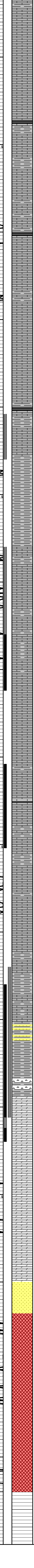
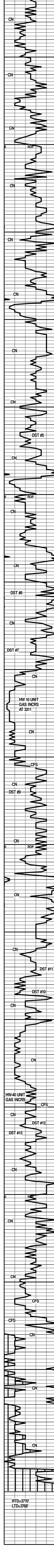
WELLSITE GEOLOGIST:

RENE HUSTEAD
600 N. WINWOOD ST.
GARDNER, KANSAS 66030
PHONE (913) 208-3390

Geologist Contact Info:

Name: Rene Husted
Company: Consultant
Address: 600 N. Winwood St.
Gardner, Kansas 66030
Phone- (913) 908-3390

ROP (min/ft)	DST	Lithology	Depth	Geological Descriptions	TG, C1-C4 / REMARKS
			16		SURVEYS: 857' @ 1 1/4 DEG 1800' @ 1 1/4 DEG 2300' @ 3/4 DEG 3180' @ 1 1/4 DEG 3315' @ 1 DEG 3770' @ 1 1/4 DEG
			1700	SH-DK GRV-BLKY-FOSS	STRAP=1805.13 BOARD=1803.93 1.20 LONG TO THE BOARD
				ANH-Y-FRSTY GRV-SUB-ANG-SHLY-HD-DNS	DST #1 1714-1800 REC-11' FT DRILLING MUD FBLWFR BLW BLT 9 INCHES-NO BLWBK FBLWFR BLW BLT TO 9 INCHES-NO BLWBK 3060-3010 HP-942.8-820.38 SIP-183.3-266.49 IFP-57-71 FFP-96-266
				SH-GRY-FRM-BLKY	
				LS-GRY-F-GRN-HD-DNS	
			1750	ANH-Y-FRSTY WHT AND GRV-SUB-ANG-SHLY IP-HD-DNS	
				POOR SAMPLES	KB=1915
				HERINGTON 1768' (+147')	
				POOR SAMPLES	HW-25 UNIT GAS INCRS
				DOLO-TN-F-GRN-PP POR-GAS SHOW	
				DOLO-TN AND GRV-F-GRN-TR SH LT GRY IMBD-FR PP POR-GAS SHOW	
				DOLO-TN AND GRV-F-GRN-TR FOSS FRAGS-TR SH LT GRY IMBD-FR PP POR-GAS SHOW	HW-50 UNIT GAS INCRS
			1800	SH-DK GRV-FRM-DOLO IMBD	MUD DATA @ 1807 WT. 8.7 VIS 36 FIL 18.4 LCM 0
				SH-GRY-RED-BLKY	
				WINFIELD 1820' (+95')	
				DOLO-TN-F-GRN-TR SH LT GRY IMBD-PP POR-NO GAS SHOW	
				DOLO-GRV-F-GRN-TR SH DISS THRU-PP POR AND ISO LRG VUG POR-NO GAS SHOW	
				DOLO-GRV-F-GRN-SHLY-PP POR-N'S	
				DOLO-OFF WHT/GRV-F-XLN-FOSS-OOL-SHLY-PR OOL-MOLDIC POR	
				DOLO-OFF WHT/GRV-F-GRN-OOL-TR OOL-MOLDIC POR TO NO VIS POR	
				DOLO A.A	
				SH-RED-BLKY-SILTY	
				TOWANDA 1883' (+32')	
				POOR SAMPLES	
			1900	SH-RED-BLKY-SILTY	
				FT RILEY 1916' (+1')	
				LS-OFF WHT-F-GRN-HD-DNS	
				LS-OFF WHT/GRV-F-GRN-FOSS-OOL-BRIT-DNS TR PYR IMBD	
				LS-TN-F-XLN-OOL-FR OOL-MOLDIC POR	
			1950	LS-TN-CRS-GRN-FR INTER-GRN POR	
				LS-TN-CRS GRN-FR INTER-GRN-LRG VUG POR	
				LS-CRIM-F-GRN-XLN-W/ CHRT-TN-OPQ-FRSH	
				LS-TN/GRV-F-XLN-OOL-TR FOSS-PR OOL-MOLDIC POR	
			2000	LS-CRIM-F-XLN-CHLKY-OOL-PR OOL-MOLDIC POR	
				LS-CRIM-GRV-F-XLN-OOL-TR FOSS-TR SH LT GRY IMBD W CHRT-OFF WHT-TRIP	
				LS-GRV-F-XLN-OOL-HD-DNS	
				LS-OFF WHT-F-XLN-V-FOSS-FUS-HD-DNS	
				B/FLORENCE 2014' (-99')	
				SH-DK RED-BLKY-SILTY	
				KINNEY 2038' (-123')	
				LS-CRIM-F-XLN-CHLKY IP-V-OO-FOSS-BRIT-TR VUG POR	
				LS-CRIM-F-XLN-FOSS-OOL-HD-DNS	
				SHALES-GRV-GRN-BLKY-SILTY	
				WREFORD 2066' (-151')	
				LS-OFF WHT-F-XLN-OOL-FR OOL-MOLDIC POR	
				LS-TN/GRV-F-XLN-FOSS-OOL-SHLY	
				COUNCIL GROVE 2086' (-171')	
			2100	SH-GRV-BLKY	WT. 9.5 VIS 39
				LS-TN/GRV-M-GRN-FOSS-OOL-FR INTER-GRN POR W/ CHRT-GRV-F-FOSS-OPQ-FRSH	
				SHALES-GRV-RED-SFT-GUMMY	
				CROUSE 2126' (-211')	
				LS-TN-F-XLN-CHLKY-FOSS-TR PP POR	
				LS-TN/GRV-F-XLN-SLI SUCRO-HD-DNS	
			2150	LS-TN-F-XLN-OOL-HD-DNS	WT. 9.5 VIS 38
				SH-DK GRV-SPLNTY	
				LS-TN-F-XLN-OOL-HD-DNS	
				SH-DK GRV-BLKY-LMY	
				LS-GRV-F-GRN-SHLY-TR FOSS-HD-DNS	
				SH-LT GRV-SFT-GUMMY	
				LS-TN-F-XLN-FOSS-TR INTER-GRN POR	
				SH-LT GRV-SFT-GUMMY	
				COTTONWOOD 2214' (-299')	
				LS-TN-F-XLN-BRIT-FOSS FRAGS-SM OOL-FR INTER-PRT POR AND SM VUG-GAS SHOW	DST #2 2190-2240 REC-30 FT DRILLING MUD FBLWVK BLDING BLW TO 2 INCHES FBLWVK BLDING BLW TO 1 INCH 1530-1530 SIP-724-711 IFP-50-63.47 FFP-108.26-1090.54
				LS-TN-F-GRN-SUCRO-BLOCKY-TR PP POR	DST #3 2240-2300 REC-120 FT (20% WATER/80% MUD) 120 FT (30% MUD/70% WATER) FBLWFR BLW BOB IN 2 MIN FBLWFR BLW BLT BOB IN 1 MIN GAS TO SURF IN 5 MIN SIP-683-298.19 IFP-102-44-128.92 FFP-102.35-138.95 HP-1138.08-1102.78
				LS-DK GRV-BLKY-LMY	GAS CHART MIN PSIG CK MCFD 10 10 14 532 20 14 751 30 20 14 751 40 18 14 751 50 16 14 652 55 14 14 633
				LS-TN-F-XLN-OOL-TR FOSS-HD-DNS/SH-DK GRV-BLKY-LMY	HW 5 UNIT GAS INCRS
				SH-RED-SFT-GUMMY	
				NEVA 2260' (-345')	MUD DATA @ 2454 WT. 9.6 VIS 38 FIL 18.8
				LS-OFF WHT-F-XLN-BRIT-FOSS-OOL-PR INTER-GRN POR	
				LS-OFF WHT-M-GRN-FOSS-OOL-PR TO FR INTER-GRN POR-TR SM VUG POR	
				LS-CRIM-F-M-GRN-FOSS-OOL-FR VUG/INTER-GRN POR	
			2300	SH-DK GRV AND RED-FRM-BLKY	
				SH-RED-BLKY-SILTY	
				RED EAGLE 2312' (-397')	
				LS-OFF WHT-F-XLN-FOSS-OOL-HD-DNS	
				LS-TN-F-XLN-FOSS-OOL-FR INTER-GRN/VUG POR-GAS SHOW	HW 10 UNIT GAS INCRS
				LS A.A. W/ CHRT-TRANS-FOSS-OOL-FRSH	
				LS-OFF WHT-F-M-XLN-BRIT-FOSS-TR OOL-PR TO FR INTER-GRN-TR SM VUG POR	
				LS-OFF WHT-F-XLN-FOSS-PR FOSS VUG POR	
				SH-BLK-CARB	
				SH-GRV-SFT-GUMMY	
				LS-OFF WHT-F-GRN-TR FOSS-HD-DNS	
				SH-GRV-FRM-BLKY-WAXEY	
				POOR SAMPLE	
				LS-OFF WHT/GRV-F-GRN-OOL-TR SH LT GRY IMBD-DNS	
				LS-OFF WHT/GRV-F-GRN-FR OOL-MOLDIC POR	
			2400	SH-DK GRV-SPLNTY	
				LS-GRV-F-GRN-TR FOSS-V-SHLY-HD-DNS	
				SH-GRV-BLKY-TR MICA	
				LS-GRV-F-GRN-FOSS-V-SHLY-HD-DNS	
			2450	SH-DK GRV-BLKY-FOSS	
				LS-TN-F-XLN-FOSS-HD-DNS	
				SH-DK GRV-BLKY-TR FOSS	
				SH-GRV-BLKY-W/ CHRT-BRIN-OPQ-FRSH	
				LS-TN-F-XLN-HD-DNS W/ SH-DK GRV-BLKY-FOSS-SHELLS	
				LS AND SHA.A.	
				LS-GRV-F-XLN-V-SHLY-V-FOSS-OOL-HD-DNS	
				SH-LT GRV-BLKY-SILTY	
				LS-TN-F-XLN-FOSS-OOL-HD-DNS	
				SH-DK GRV-BLKY	
				LS-OFF WHT/GRV-F-GRN-FOSS-SHLY-HD-DNS	
				SH-GRV-SPLNTY	
				LS-OFF WHT-F-XLN-TR FOSS-HD-DNS	KB=1915
				LS-TN-F-XLN-HD-DNS	
				SH-DK GRV-BLKY TR FOSS	
				LS-BRIN-V-F-XLN-TR FOSS-HD-DNS	
				SH-GRV-BLKY-FOSS	
				LS-OFF WHT-F-XLN-FOSS-HD-DNS	DIS-PLACED AT 2552' STARCH TO CHEMICAL
				ROOT SHALE 2558' (-643')	
				LS-OFF WHT/GRV SPECS-VF-GRN-BRIT-SILTY	
				SS-FRSTY GRV-M-GRN-TR-FRND-WELL SRTEED-CALC CMT-SHLY-TR PP POR	
				SLTSS-FRSTY GRV-F-GRN-SHLY-MICA-HEM	
				SLTSS-A.A.	
				SH-DK GRV-BLKY	
				SH-LT GRV-V-SFT-V-SILTY-HEM	
				STOTLER 2612' (-697')	
				LS-TN-F-XLN-FOSS-HD-DNS	
				LS-TN-F-XLN-BRIT-V-OO-HD-DNS-TR GLAU	
				SS-FRSTY GRV-F-GRN-FRI TO TR-FRND-WELL SRTEED-CALC CMT-SHLY-HEM	HW-15 UNIT GAS INCRS AT 2664'
				SLTSS-FRSTY GRV-F-GRN-SHLY-MICA-HEM	
				SH-GRV-SILTY-WAXEY	DST #4 2626'-2664' REC-10 FT DRILLING MUD FBLWNO BLW FOR 6 MIN AND DIED FBLWNO BLW 1530-1530 SIP-15-30 IFP-36-49-36.59 FFP-37.36-37.23 HP-1238-1174.01
				SLTSS-A.A.	
				TARKIO 2686' (-771')	
				LS-TN-F-XLN-V-OO-HD-DNS TR OOL-MOLDIC POR	
				LS-TN-F-XLN-FOSS-SHELLS-HD-DNS	
				LS-TN-F-XLN-FOSS-HD-DNS	
				SH-DK GRV-BLKY-WAXEY-MICA	
				LS-TN/GRV-F-XLN-FOSS-HD-DNS	
				SH-DK GRV-BLKY-LMY	
				LS-TN-F-XLN-HD-DNS WITH SM PYR SLT IMBD	
				SH-DK GRV-BLKY	
				SLTSS-FRSTY GRV-F-GRN-SHLY-MICA-HEM	
			2750	HOWARD 2750' (-835)	
				LS-LT GRV-F-XLN-SNDY-HD-DNS	
				LS-TN-F-GRN-SNDY TEX-FOSS FRAGS-OOL-FR PP/SM VUG POR	
				SH-LT GRV-SILTY-MICA	
				LS-TN-F TO M-GRN-V-SM OOL-FR SM OOL-MOLDIC POR	
				LS-TN-F-XLN-FOSS-HD-DNS	
				SEVERY 2790' (-875)	MUD DATA @ 2789 WT. 8.9 VIS 46 FIL 10.4
				SH-GRV-SILTY	
				SLTSS-FRSTY GRV-F-GRN-SHLY-MICA-HEM	
				TOPEKA 2815' (-900)	
				LS-CRIM-F-XLN-TR FOSS-HD-DNS	
				SH-GRV-BLKY-LMY	
				LS-GRV-F-XLN-FOSS-SHLY-HD-DNS	
				LS-TN-F-XLN-HD-DNS	
				LS-OFF WHT/GRV-F-XLN-SLI CHLKY-OOL-BRIT-DNS	
				SH-GRV-BLKY-LMY	
				LS-OFF WHT-F-GRN-XLN-TR FOSS-HD-DNS	
			2850	LS A.A.	
				LS-TN-F-XLN-FOSS-SHLY-HD-DNS	
				SH-GRV-GRN-BLKY	
			2900	LS-TN-F-XLN-HD-DNS	
				LS-OFF WHT-F-XLN-SLI CHLKY-HD-DNS	



LS-TNF-GRN-FOSS-OOL-FR INTER-GRN POR-DULL WHT MIN FLOR-NO VIS SHOW WITH CHRT-GRY-OPQ-FRSH	
LS-TNF-GRN-FOSS-OOL-TR SH LT GRY IMBD-BRIT-FR INTER-GRN-FOSS-VUG POR-DULL WHT MIN FLOR-NO VIS SHOW	
LS-TNF-XLN-FOSS-TR OOL-SHLY-HD-DNS	
LS-GRY-TNF-XLN-HD-DNS W/ CHRT-GRY-OPQ-FRSH	
LS-CRIM-F-GRN-CHLKY-BRIT-FOSS-DNS	
LS-TNF-XLN-FOSS-HD-DNS WITH CHRT-GRY-OPQ-FRSH TR PYR XLS IN TRAY SH-BLK-CARB	
SH-GRY-BLK-LMY -Y-FOSS WITH LS-OFF WHT-F-GRN-CHLKY-SM PYR XLS IMBD	
LS-TNF-XLN-BRIT-DNS WITH TR CHLK	
LS-TNF-XLN-HD-DNS	
SH-GRY-BLK-LMY	
LS-TN-GRY-F-XLN-FOSS-OOL-HD-DNS	
LS-TN-GRY-V-F-XLN-FOSS-OOL-HD-DNS	
SH-BLK-CARB	HW 25 UNIT GAS INCRS
LS-TNF-M-GRN-SLI CHLKY-FOSS-OOL-PR TO FR INTER-GRN POR-SCATT WHT FLOR-NO VIS CUT	
LS-TNF-GRN-FOSS-TR INTER-GRN POR-NO VIS FLOR-NO VIS SHOW	
LS-TNF-XLN-OOL-TR OOL-MOLDIC POR-DULL WHT FLOR-NO VIS CUT	
LS-TNF-XLN-BRIT-OOL-FR TO GD OOL-MOLDIC POR-DULL WHT MIN FLOR-NO VIS SHOW	
LS-TNF-XLN-TR DK BLK SH IMBD-HD-DNS	
LS-TNF-XLN-CHLKY IP-TR FOSS-TR FRAC-TR DK BLK STN-NO VIS FLOR-NO VIS CUT	
LS A.A.	
HEEBNER 3146' (-1231')	
SH-BLK-CARB	HW-35 UNIT GAS INCRS
TORONTO 3162' (-1247')	
LS-OFF WHT-F-XLN-OOL-IP-PR OOL-MOLDIC POR-LT BRN STN-DULL WHT FLOR-FR STRM CUT-V-FNT ODOR	DST #5 REC-30 FT 15% OIL AND 94% MUD IBLWSURF BLW THRU OUT FBLWSURF BLW THRU OUT 15/30/15/30 IFP-129.6-1070.17 FFP-14.16-46.23 FFP-48.53 HP-1541.91-1518.46
LS-OFF WHT-F-XLN-FOSS-OOL-HD-DNS WITH SM PYR XLS IMBD	MUD DATA @ 3180' WT. 9.2 VIS 47 FIL 11.2
LS-TNF-XLN-FOSS-OOL-HD-DNS TR PR OOL-MOLDIC POR-DULL WHT FLOR-NO VIS SHOW	
SHALES-GRY-GRN-RED-SPLNTY IP-BLK IP SLTSS-FRSTY GRY-F-GRN-SHLY-HEM AND MICA	
SH-GRY-BLK-LMY	
SH-GRY-FRM-LMY-FOSS	
SLTSS-FRSTY GRY-F-GRN-SHLY-MICA-HEM	
BROWN LS-3228' (-1313')	
LS-LT BRN-F-XLN-HD-DNS	HW-23 UNIT GAS INCRS AT 225Z
LANSING/KC 3239' (-1324')	DST #6 3232-3239' REC-30 FT HEAVY MUD IBLWGD BLW STEADY BLW 2 INCH BLW FBLWVK SURF BLW FOR 22 MIN DIED FLUSHED TOOL-WK BLW 4 MIN AND DIED 30/60/30/60 SIP-1487.13-1415.46 IFP-46-50.95 FFP-67.10-152.34 HP-1627-1553.16
LS-OFF WHT-F-XLN-FOSS-TR PR PP POR-DK BLK STN-DULL WHT FLOR-NO VIS CUT	
LS-OFF WHT-F-XLN-OOL-IP-TR OOL-MOLDIC IP AND TR PR PP POR IP-TR LT BRN STN-TR SCATT FLOR-PR STRM CUT-V-FNT ODOR	DST #7 3200'-3211' REC-240' HEAVY MUD IBLWGD BLW BOB IN 1 MIN AND DECREASED TO A VERY WK SURF BLW FBLWGD BLW BOB IN 1 MIN AND DIED (MIS-RUN TOOL PLUGGED)
LS-TN-GRY-F-XLN-FOSS-OOL-SHLY-TR DK BRN STN-V-DULL FLOR-NO IMMED VIS CUT-NO ODOR	
LS-CRIM-F-XLN-OOL-HD-DNS W/ CHRT-GRY-OPQ-FRSH	DST #8 3200'-3211' REC-30 FT MUDDY WATER IBLWGD BLW BOB IN 1 MIN FBLWGD BLW BOB IN 1 MIN 30/60/45/90 SIP-1413.97-1261.27 IFP-52/700 FFP-1714-967 HP-1681.57-1559.26
LS-LT BRN-F-XLN-OOL-FR INTER-PRT/OOL-MOLDIC POR-LT BRN STN-NO VIS FLOR-V-GD FLSH CUT-GD ODOR	
LS-TNF-XLN-OOL-FR TO GD OOL-MOLDIC POR-NO VIS STN-NO VIS CUT-GD ODOR	MUD DATA @ 3315' WT. 9.3 VIS 54 FIL 9.6
LS A.A.	
LS-TNF-XLN-OOL-GD OOL-MOLDIC POR-DULL YEL FLOR-NO VIS STN-NO VIS CUT-GD ODOR	
LS-CRIM-F-XLN-OOL-PR TO FR OOL-MOLDIC POR-BRITE WHT/YEL FLOR-NO VIS CUT-NO ODOR	
LS-TN-V-F-XLN-HD-DNS	
LS-TNF-XLN-TR CHLK-HD-DNS	HW-12 UNIT GAS INCRS
LS A.A. WITH TR CHLK	DST #9 3354-3412' REC-70 FT HEAVY MUD IBLWVERY WEAK SURF BLW THRU-OUT FBLWVERY WEAK SURF BLW THRU-OUT 15/30/30/60 SIP-1054.83-1054.18 IFP-30-57.39 FFP-25.04-92.81 HP-1671.51-1600.06
LS-OFF WHT-F-XLN-OOL-TR FOSS-PR TO FR INTER-PRT/PP POR-LT BRN STN-SCATT BRITE WHT FLOR-GD STRM CUT-STRNG ODOR-FREE OIL	
LS-OFF WHT/TNF-XLN-FOSS-FR INTER-PRT POR-LT BRN STN-SCATT YEL FLOR-GD STRM CUT-GD ODOR-FREE OIL	
LS-OFF WHT-F-XLN-TR FOSS-TR OOL-HD-DNS	
LS A.A.	
LS-TNF-XLN-HD-DNS	
LS-OFF WHT-F-XLN-OOL-HD-DNS W/ PYR XLS IN TRAY	MUD DATA @ 3460' WT. 9.4 VIS 45 FIL 8.8
SH-GRY-GRN-BLK-Y-WAXEY	
LS-TNF-XLN-OOL-PR OOL-MOLDIC POR-NO VIS SHOW	
B KANSAS CITY 3475' (-1560')	
SH-GRY-RED-FRM-BLK-Y	DST #10 3480'-3555' REC-1059 DRILLING MUD IBLWGD BLW BOB IN 1 MIN FBLWGD BLW TO SURGING BLW -LOST PACKER SEAT-PACKER FAILURE
LS-CRIM-F-XLN-OOL-TR OOL-MOLDIC POR-TR DK BLK STN-NO VIS FLOR-FR STRM CUT-V-FNT ODOR	
SHALES-GRY-RED-GRN-BLK-Y	
LS-LT BRN-F-XLN-CHLKY IP-SNDY-NO VIS POR-NO VIS FLOR-NO SHOW	DST #11 3471'-3555' REC-50 FT DRILLING MUD IBLWGD BLW BLT BOB IN 1 MIN FBLWGD BLW -GAS TO SURF IN 15 MIN 15/60/50/90 SIP-630.25-578.6 IFP-191.85-61.31 FFP-59.14-65.6 HP-1766.93-1698.68
SH-RED-V-GUMMY-SNDY-PYR XLS IN TRAY	GAS RATE MIN PSIG CK MCF/D 20 5 14 371 30 8 14 476 40 8 14 476 50 8 14 476 60 8 14 476 90 8 14 476 55-60 GAS SAMPLE
SH-RED-GUMMY-CHRT-OFF WHT-OPQ-FRSH	MUD DATA @ 3555' WT 50 VIS 50 FIL 10.4
SH-RED-FRM TO SFT-SNDY	DST #12 3554-3627' REC-275 CLEAN GASSEY OIL IBLW-STRING BLW -GAS TO SURF IN 3 MIN FBLW-STRING BLW 5/60/90/90 SIP-1091.46-878.55 IFP-20.58-155.58 FFP-26.48-105.12 HP-1763.25-1675.31
SH-RED-FRM-SNDY W/ CHRT-VARIG-OPQ-FRSH	GAS RATE MIN PSIG CK MCF/D 5 56 112 521 10 40 112 440 20 12 112 241 30 32 112 146 40 22 112 121 50 16 112 103 60 16 112 103 70 16 112 103 80 16 112 103 90 16 112 103
DOLO-CRIM-CRS XLN-SHLY IP-PYR XLS IMBD IP-TR GLAU-PR INTER-GRN POR-TR LT BRN STN-YEL-GLD FLOR-PR STRM CUT-GD ODOR	MUD DATA @ 3557' WT 51 VIS 51 FIL 8.8
DOLO-CRIM-CRS XLN-FR INTER-GRN-VUG POR-LT BRN STN-SCATT YEL-GLD FLOR-GD STRM CUT-FREE OIL-STRNG ODOR	DST #13 3554-3627' REC-275 CLEAN GASSEY OIL (15% GAS AND 89% OIL) IBLW-STRING BLW GAS TO SURF IN 5 MIN FBLW-STRING BLW 5/60/90/90 SIP-1056.50-908.38 IFP-21.58-108.58 FFP-188.73-326.45 HP-1802.26-1675.32
DOLO-CRIM-CRS XLN-FR INTER-GRN-LT BRN STN-V-DULL WHT FLOR-FR STRM CUT-GD ODOR	
DOLO-OFF WHT-CRS-XLN-TR SND IMBD-PR TO FR INTER-GRN-VUG POR-LT BRN STN-DULL WHT FLOR-FR STRM CUT-FNT ODOR	
DOLO-CRIM-F-MXLN-TR SND IMBD-PR INTER-GRN POR-TR LT BRN STN-DULL WHT FLOR-FNT STRM CUT-FNT ODOR	
DOLO-OFF WHT-F-XLN-TR SND-HD-DNS	
DOLO-OFF WHT-F-XLN-V-SNDY-TR LT PINK STN-BRITE WHT FLOR-TR LT FLSH CUT	
DOLO-LT PINK-F-XLN-SNDY-W/ CHRT-TN-OPQ-FRSH	MUD DATA @ 3670' WT 51 VIS 51 FIL 8.8
DOLO-CRIM-F-XLN-V-SNDY-TR INTER-GRN POR-DULL WHT FLOR-NO VIS SHOW-TR GLAU IMBD	DST #14 3554-3627' REC-1475 CLEAN GASSEY OIL (15% GAS AND 89% OIL) IBLW-STRING BLW GAS TO SURF IN 5 MIN FBLW-STRING BLW 5/60/90/90 SIP-1056.50-908.38 IFP-21.58-108.58 FFP-188.73-326.45 HP-1802.26-1675.32
DOLO A.A.	
SS-FRSTY WHT-F-GRN-FRL-SUB-ANG TO SUB RINDED-PR SRTEO-DOLO-CMT-TR WLT BRN STN-WHITE-FLOR-LT FLSH CUT-NO ODOR	GAS RATE MIN PSIG CK MCF/D 5 38 34 87887 20 12 112 3303 30 13 112 51881 40 13 112 31887 50 8 112 23837 60 16 112 17200 90 6 112 14700
ROOSE LG AND SMALL SMD GRNS IN TRAY-NO VIS FLOR-NO VIS CUT-NO ODOR	MUD DATA @ 3631' WT 44 VIS 44 FIL 11.2
GRANITE-3655' (-1750')	DST #14 3631'-3637' REC-350 FT CLEAN GASSY OIL (15% GAS, 85% OIL) 300 FT GASSY OIL CUT MUDDY H2O (5% GAS, 20% OIL, 65% H2O, 10% MUD) 300 FT GASSY OIL CUT MUDDY H2O (5% GAS, 15% OIL, 75% H2O, 5% MUD) 900 FT GASSY H2O 5% GAS, 95% H2O 5/60/120 SIP-1188.56-1188.66 IFP-196.81-833.62 FFP-232-33-757.53 HP-1756.77-1691.49
GRANITE-PINK/WHITE-WITH BLK SPECS-FELDSPAR, QUARTZ, MICA, HORNEBLENDE	GAS RATE-FLOW PERIOD 2 MIN CK PSIG MCF/D 20 .13 .57 5.6 30 .13 .57 5.6 40 .13 .57 5.6 50 .13 .57 5.6 60 .13 .57 5.6
GRANITE A.A.	MUD DATA @ 3770' WT 54 VIS 58 FIL 10.4
GRANITE A.A.	
QUARTZ-TRANS WITH BLK SPECS-TR PINK MINERAL (FELDSPAR) NO VIS FLOR-NO VIS SHOW	
QUARTZ-TRANS WITH BLK SPECS-NO VIS FLOR-NO VIS SHOW	
QUARTZ-TRANS-WITH BLK SPECS-NO VIS FLOR-NO VIS SHOW	
QUARTZ-TRANS WITH BLK SPECS-NO VIS FLOR-NO VIS SHOW	
RTD=3770' LTD=3765'	