



OIL FIELD SURVEYORS

BOX 8604 - PRATT, KS 67124
(620) 672-6491

915144

INVOICE NO.

LOTUS OPERATING CO LLC
OPERATOR

ACHENBACH B
FARM

Barber COUNTY 11 S 35s T 13w R

C NE NE NW

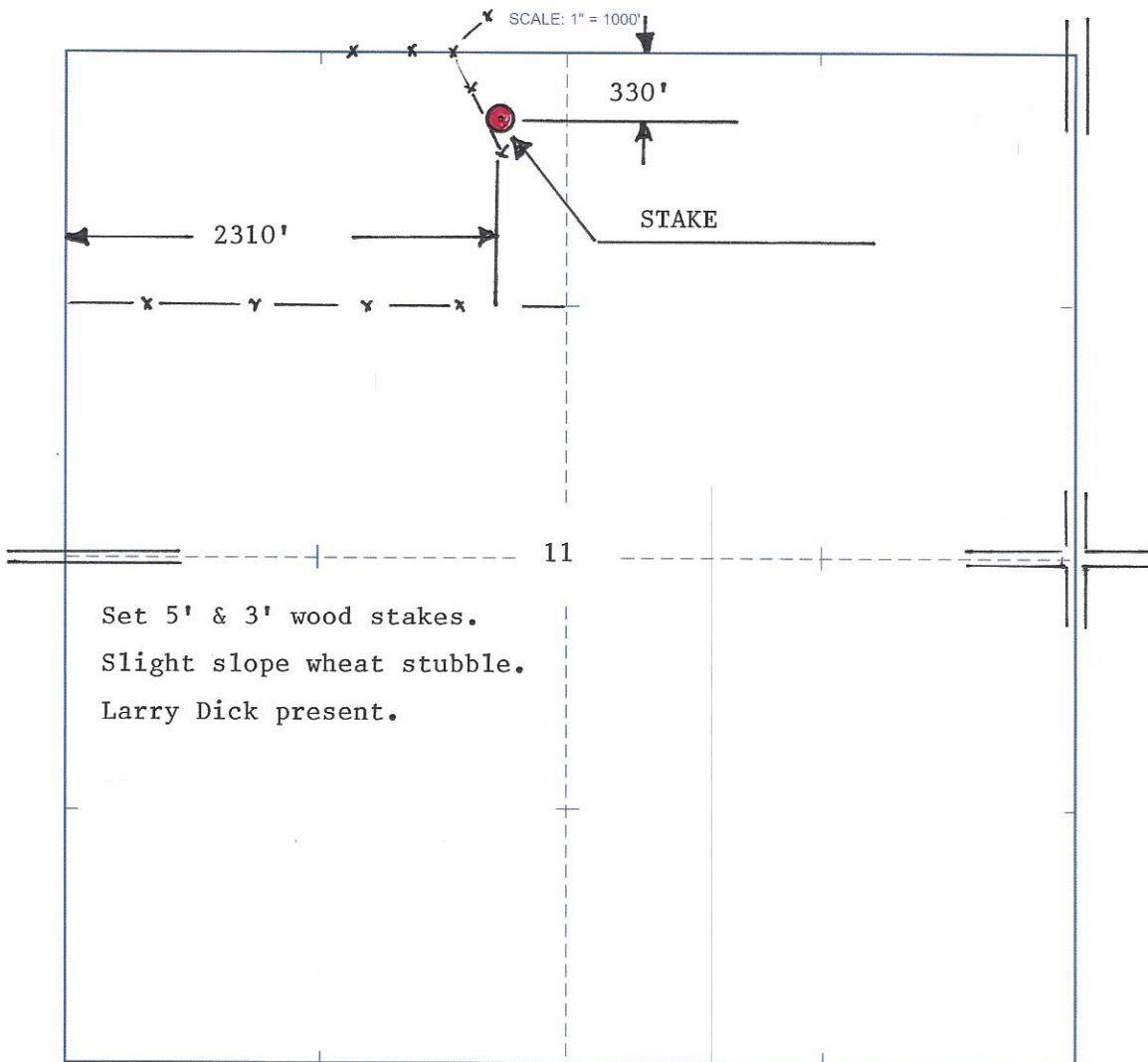
LOCATION

ELEVATION: 1477' GR



LOTUS OPERATING CO LLC
100 S. Main, Ste 420
Wichita, KS 67202

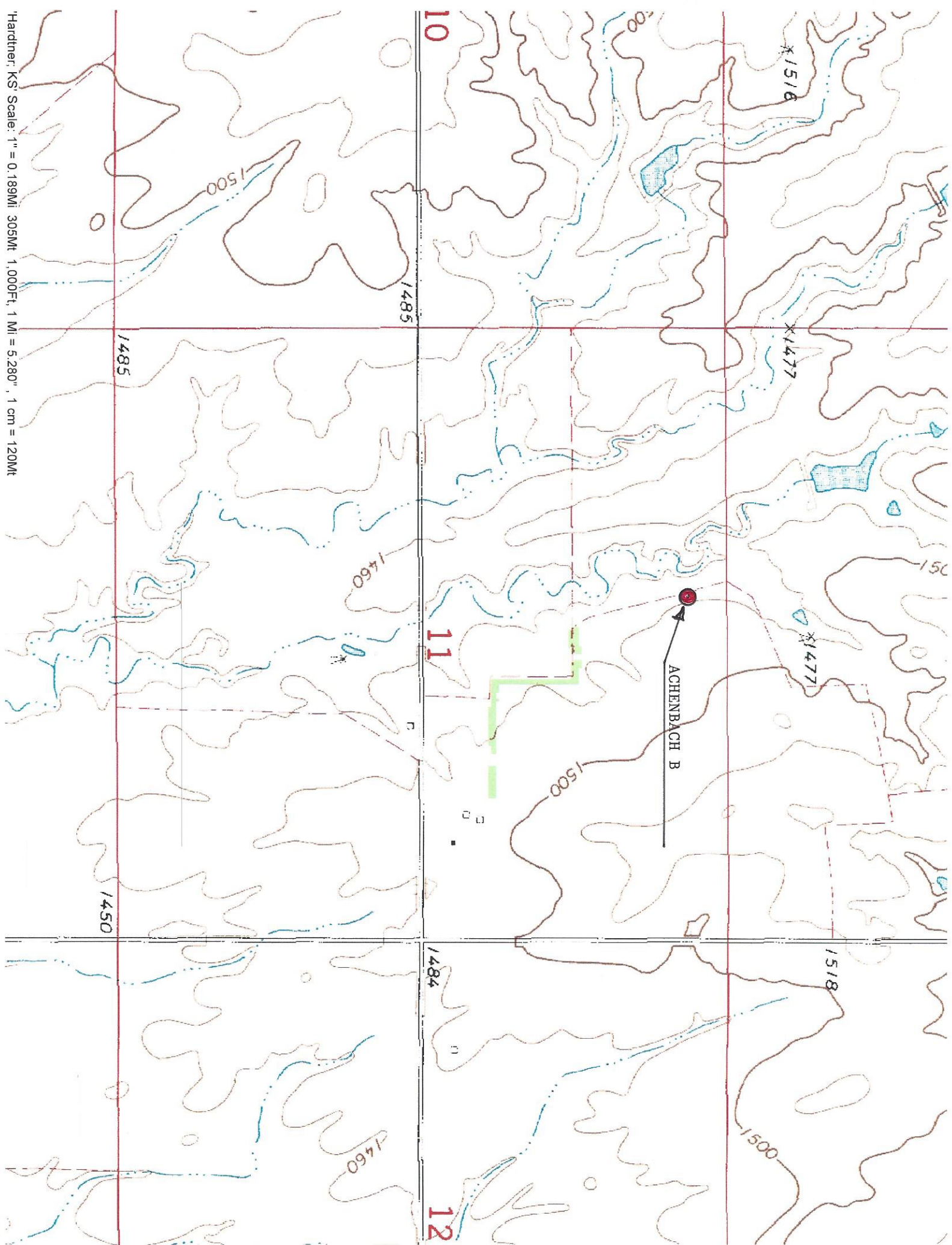
AUTHORIZED BY: Tim Hellman



9/15/14

DATE STAKED:

Hardner, KS' Scale: 1" = 0.189Mi 305Mt 1,000Ft, 1 Mi = 5,280', 1 cm = 120Mt



10

11

12

1485

1485

1450

1484

1518

1500

1460

1500

1460

X1516

X1477

X1471

X1477

ACHENBACH B

1500

Advantage Elevations

P. O. Box 8604
10168 S. Hwy 281
Pratt, KS 67124

Invoice

DATE	INVOICE #
10/2/2014	915144

BILL TO
Lotus Operating Company, LLC 100 South Main Suite 420 Wichita KS 67202

TERMS	PROJECT
Due Upon Receipt	

DESCRIPTION	AMOUNT
Survey Drill Site Location on Achenbach #D in Section 11-35s-13w, NE NE NW in Barber County, Kansas	450.00
Total	\$450.00