



## Geologist's Report

**Company:** Blueridge Petroleum Corporation  
**Lease:** May 1-15  
**Field:** Wildcat  
**Location:** W2-SE-SW-SW (330 FSL & 710 FWL)  
**Sec:** 15 **Twsp:** 2S **Rge:** 30W  
**County:** Decatur **State:** Kansas  
**GL:** 2784' **KB:** 2795'

**Contractor:** Southwind Drilling Rig #8  
**Spud:** 9/4/14 **Comp:** 9/12/14  
**RTD:** 4080' **LTD:** 4079'  
**Mud Up:** 3200' **Type Mud:** Chemical/Displaced

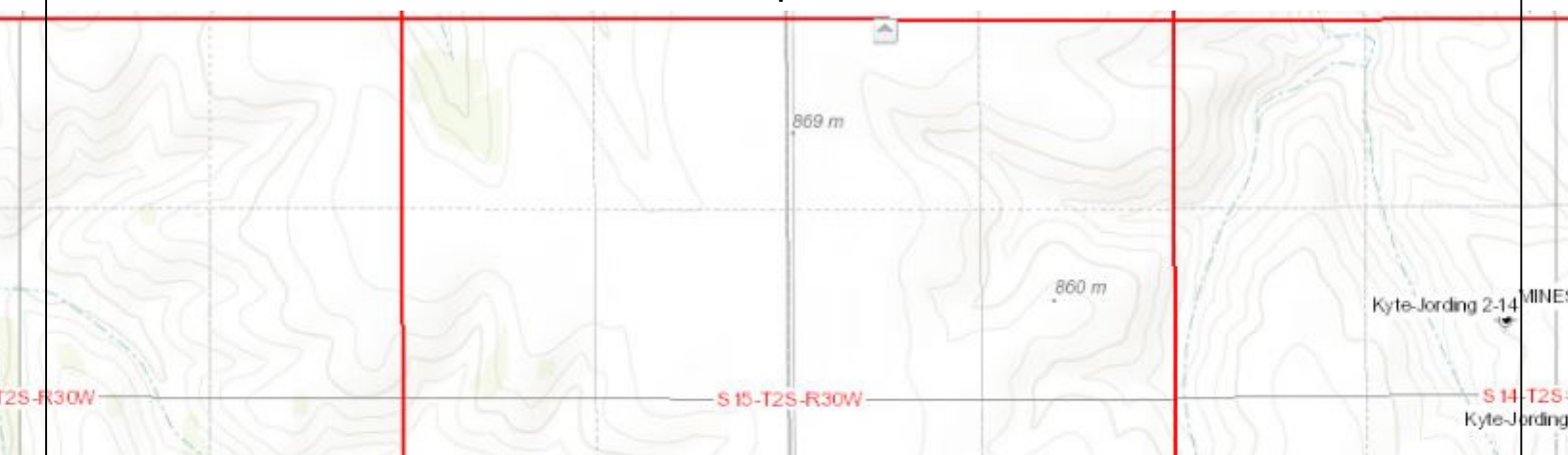
**Samples Saved From:** 3500' to RTD  
**Drilling Time Kept From:** 3500' to RTD  
**Samples Examined From:** 3500' to RTD  
**Geological Supervision From:** 3500' to RTD  
**Geologist on Well:** Clint Musgrove

**Surface Casing:** 8 5/8" @ 310'  
**Production:** 5 1/2 @ 4079'

**Logs:** By: Nabors: CNL/CDL, DIL, MEL, SONIC

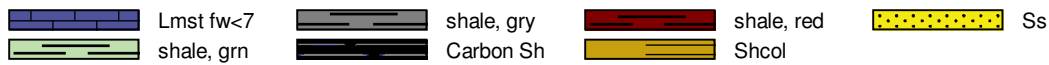
## Well Comparison Sheet

## Well Comparison 25





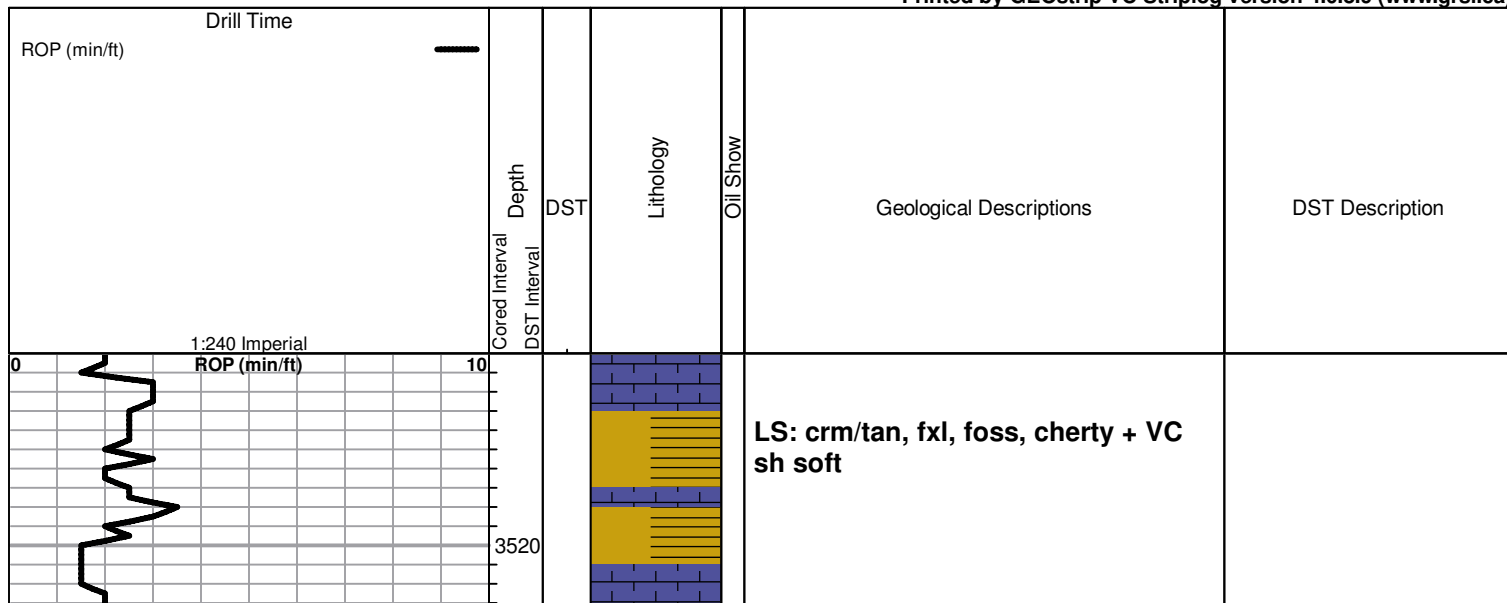
### ROCK TYPES

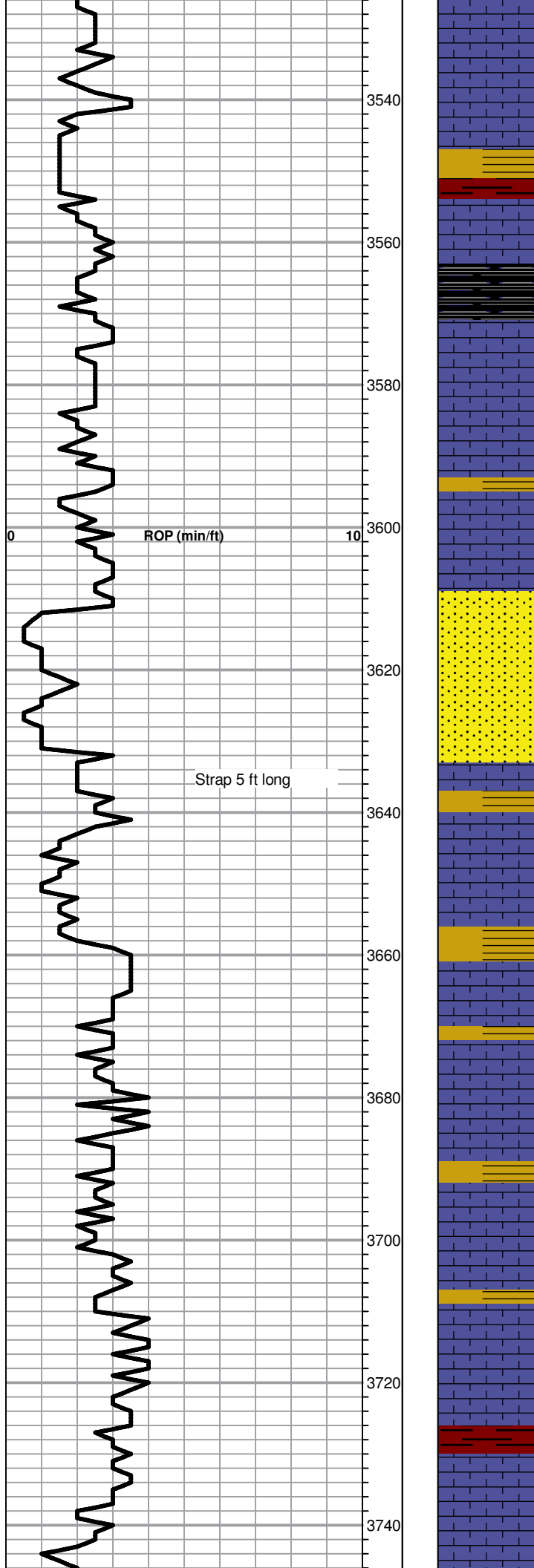


### OTHER SYMBOLS



Printed by GEOstrip VC Striplog version 4.0.8.9 ([www.grsi.ca](http://www.grsi.ca))





LS; crm, fxl, cherty, poor vis porosity, nsfo

Sh. gry/red soft

Blk carb sh

LS; cr, fxl, foss, poor vis porosity, nsfo

LS; crm, fxl, cherty, foss, (dense)

Sd. fvg, well sorted, poor vis porosity, nsfo

LS; crm, fxl, cherty, poor vis porosity, nsfo

VC sh soft

LS: crm/tan, fxl, poor vis porosity, chlky, nsfo

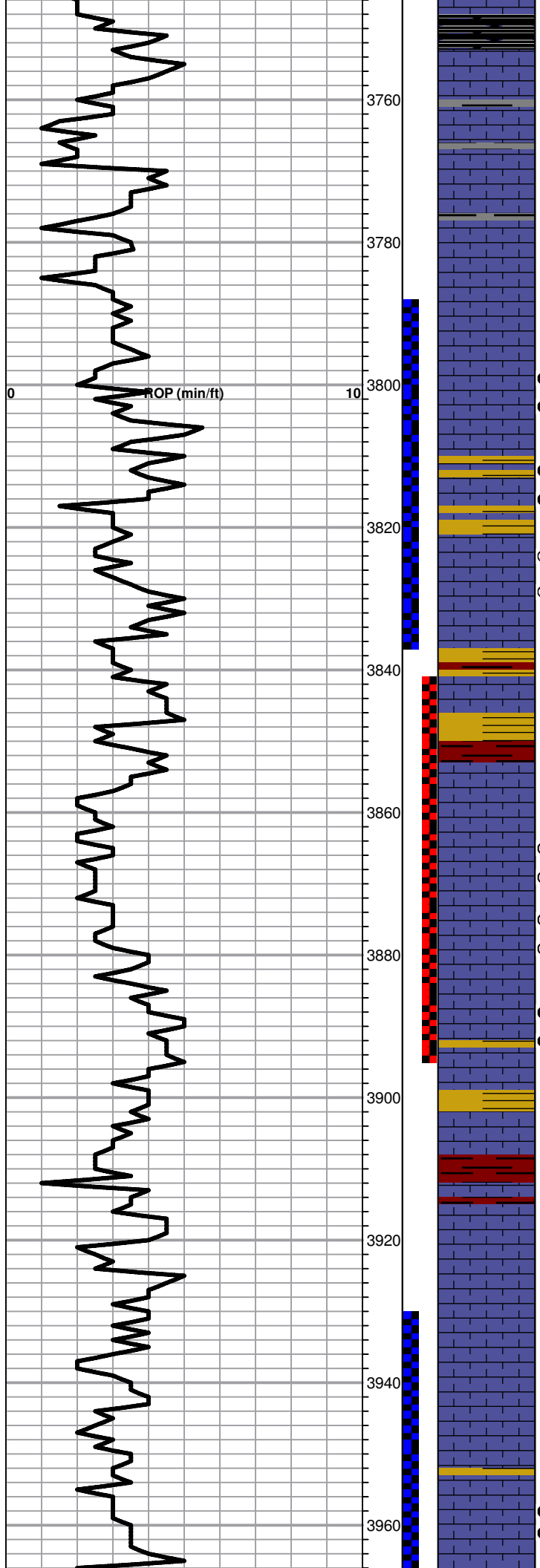
LS; crm, fxl, cherty, ft blk stn, sfo, no odor, poor vis porosity

LS; tan/crm, fxl, cherty dense, nsfo

LS; tan, fxl, foss, cherty, poor vis porosity

Sh. gry/maroon soft

LS; crm, fxl, foss, very cherty, nsfo, no odor



**Heebner**

Sample 3751.0 (-958.0)  
Log 0.0 (0.0)

Blk carb sh  
LS: crm, fxl, ft blk stn nsfo, tr pyr  
LS, crm, fxl, scatt vis porosity

**DST #1 3790-3835  
30-30-45-45**

Blow: BOB 26 sec  
2nd: BOB 1.5 mins

Recovery:  
1450' GIP  
1134' WGCO (2.5%  
W, 20%G, 77.5%O)  
126' GMCO (15%G, 20%  
M, 65%O)  
378' WGCO (5%W, 25%  
G, 70%O)  
126' GOCM (10%G, 10%  
O, 80%M)

Pressures:  
ISIP: 1262 psi  
FSIP: 1202 psi  
IFP: 145-362 psi  
FFP: 391-646 psi  
HSH: 1869-1815 psi

**Lansing**

Sample 3796.0 (-1003.0)  
Log 0.0 (0.0)

LS; crm, fxl, scatt vis porosity, ft  
blk/brn stn, sfo, no odor  
LS; crm, fxl, vuggy ppt porosity, ft  
golden brn stn, sfo, no odor  
LS; crm, fxl, ft brn stn, sfo, no odor,  
poor vis porosity

**DST #2 3842-3895  
30-30-45-60**

Blow: BOB 3 mins  
2nd: BOB 8 mins

Recovery:  
380' Free Oil and Gas  
190' MWCO (20%M,  
30%W, 50%O)  
60' MCW (10%M, 90%W)  
570' GIP

Pressures:  
ISIP: 1201 psi  
FSIP: 1206 psi  
IFP: 25-138 psi  
FFP: 141-239 psi  
HSH: 1844-1808 psi

VC sh tan/red soft

Tr. red sh soft  
LS; crm, fxl, chlky, cherty, nsfo,  
poor vis porosity

LS; crm, fxl, cherty, very ft stn, faint  
sfo, no odor

LS; crm, fxl, cherty in part, good  
golden brn stn, scatt ppt porosity,  
sfo, no odor

LS; crm, fxl, ft brn stn, fair to med  
ixl porosity, sfo, no odor

VC sh soft

Tr red sh, soft

LS; crm, fxl, chlky, nsfo  
LS; fxl, cherty, poor vis porosity

**DST #3 3930-3970  
30-45-45-60**

Blow: 4.5 inches  
2nd: 6 inches

Recovery:  
10' Free Oil and Gas  
10" GMCO (10%G, 25%  
M, 65%O)

LS; crm, f-med xln, scatt vis  
porosity, nsfo

LS; crm, fxl, f-xln porosity, spotty  
brn stn, sfo, no odor

