



INVOICE

PO Box 93999
Southlake, TX 76092

Invoice Number: 146080
Invoice Date: Sep 29, 2014
Page: 1

Voice: (817) 546-7282
Fax: (817) 246-3361

Federal Tax I.D.#: 20-8651475

Bill To:
Lario Oil & Gas Co. Lario Oil & Gas Co. P.O. Box 1093 Garden City, KS 67846

Customer ID	Field Ticket #	Payment Terms	
Lario	64252	Net 30 Days	
Job Location	Camp Location	Service Date	Due Date
KS1-01	Oakley	Sep 29, 2014	10/29/14

Quantity	Item	Description	Unit Price	Amount
1.00	WELL NAME	Felt Farms #1-11 A		
		drilling AFE 14-133		
225.00	CEMENT MATERIALS	Class A Common	17.90	4,027.50
635.00	CEMENT MATERIALS	Chloride	1.10	698.50
237.56	CEMENT SERVICE	Cubic Feet Charge	2.48	589.15
544.61	CEMENT SERVICE	Ton Mileage Charge	2.75	1,497.68
1.00	CEMENT SERVICE	Surface	1,512.25	1,512.25
50.00	CEMENT SERVICE	Pump Truck Mileage	7.70	385.00
50.00	CEMENT SERVICE	Light Vehicle Mileage	4.40	220.00
1.00	CEMENT SUPERVISOR	Andrew Forslund		
1.00	OPERATOR ASSISTANT	Brandon Wilkinson		

Handwritten initials and signatures:
je
[Signature]
je

Subtotal	8,930.08
Sales Tax	385.17
Total Invoice Amount	9,315.25
Payment/Credit Applied	
TOTAL	9,315.25

ALL PRICES ARE NET, PAYABLE
30 DAYS FOLLOWING DATE OF
INVOICE. 1 1/2% CHARGED
THEREAFTER. IF ACCOUNT IS
CURRENT, TAKE DISCOUNT OF

\$ 2,679.02

ONLY IF PAID ON OR BEFORE
Oct 29, 2014



INVOICE

PO Box 93999
Southlake, TX 76092

Invoice Number: 146333
Invoice Date: Oct 10, 2014
Page: 1

Voice: (817) 546-7282
Fax: (817) 246-3361

Federal Tax I.D.#: 20-8651475

*Drilling AFE-14-133
CK 10/20/14*

Bill To:
Lario Oil & Gas Co. Lario Oil & Gas Co. P.O. Box 1093 Garden City, KS 67846

Customer ID	Field Ticket #	Payment Terms	
Lario	64284	Net 30 Days	
Job Location	Camp Location	Service Date	Due Date
KS1-02	Oakley	Oct 10, 2014	11/9/14

Quantity	Item	Description	Unit Price	Amount
1.00	WELL NAME	Felt Farm A #1-11		
185.00	CEMENT MATERIALS	ASC	23.50	4,347.50
440.00	CEMENT MATERIALS	Light Weight Class A	19.88	8,747.20
121.00	CEMENT MATERIALS	Flo Seal	2.97	359.37
12.00	CEMENT MATERIALS	Mud Clean	25.00	300.00
772.04	CEMENT SERVICE	Cubic Feet Charge	2.48	1,914.66
1,638.00	CEMENT SERVICE	Ton Mileage Charge	2.75	4,504.50
1.00	CEMENT SERVICE	Production -- Botom Stage	3,099.25	3,099.25
1.00	CEMENT SERVICE	Production -- Top Stage	2,406.25	2,406.25
50.00	CEMENT SERVICE	Pump Truck Mileage	7.70	385.00
1.00	CEMENT SERVICE	Manifold Head Rental	275.00	275.00
50.00	CEMENT SERVICE	Light Vehicle Mileage	4.40	220.00
1.00	EQUIPMENT SALES	5-1/2 AFU Float Shoe	545.00	545.00
1.00	EQUIPMENT SALES	5-1/2 Latch Down Flex Assembly	660.00	660.00
1.00	EQUIPMENT SALES	5-1/2 D V Tool	5,335.00	5,335.00
16.00	EQUIPMENT SALES	5-1/2 Centralizer	57.00	912.00
1.00	EQUIPMENT SALES	5-1/2 Basket	395.00	395.00
1.00	EQUIPMENT OPERATOR	Paul Beaver		
1.00	EQUIPMENT OPERATOR	Tyler Flipse		
1.00	OPERATOR ASSISTANT	Wayne Messalle		

xe
js
OCT 23 2014
je

ALL PRICES ARE NET, PAYABLE
30 DAYS FOLLOWING DATE OF
INVOICE. 1 1/2% CHARGED
THEREAFTER. IF ACCOUNT IS
CURRENT, TAKE DISCOUNT OF

\$ 10,852.89

ONLY IF PAID ON OR BEFORE
Nov 9, 2014

Subtotal	34,405.73
Sales Tax	1,760.49
Total Invoice Amount	36,166.22
Payment/Credit Applied	
TOTAL	36,166.22



TRILOBITE TESTING, INC.

DRILL STEM TEST REPORT

Lario Oil & Gas Co

11 18 35 Wichita Ks

310 s Market St.
Wichita Ks67202

Felt Farm A 1-11

Job Ticket: 57352

DST#: 1

ATTN: Steve Davis

Test Start: 2014.10.03 @ 10:40:59

GENERAL INFORMATION:

Formation: **Lansing B**

Deviated: No Whipstock: ft (KB)

Time Tool Opened: 12:41:29

Time Test Ended: 17:31:59

Test Type: Conventional Bottom Hole (Initial)

Tester: James Geier

Unit No: 58

Interval: 4086.00 ft (KB) To 4110.00 ft (KB) (TVD)

Reference Elevations: 3175.00 ft (KB)

Total Depth: 4110.00 ft (KB) (TVD)

3170.00 ft (CF)

Hole Diameter: 7.88 inches Hole Condition: Poor

KB to GR/CF: 5.00 ft

Serial #: 6625

Press@RunDepth: 97.63 psig @ ft (KB)

Capacity: 8000.00 psig

Start Date: 2014.10.03

End Date: 2014.10.03

Last Calib.: 1899.12.30

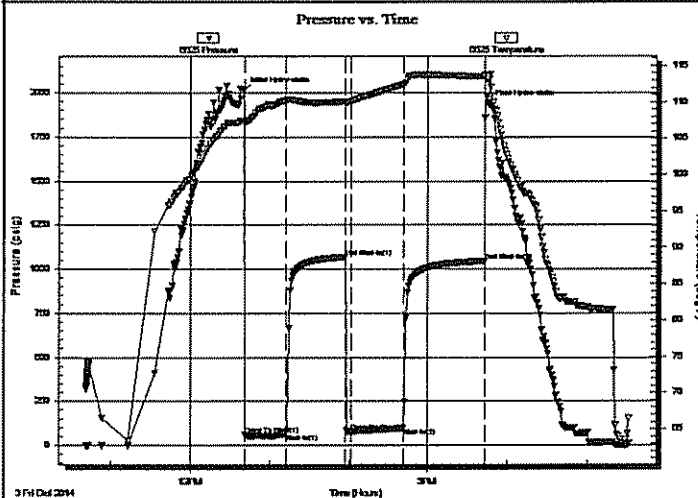
Start Time: 10:41:00

End Time: 17:31:59

Time On Btm: 2014.10.03 @ 12:40:29

Time Off Btm: 2014.10.03 @ 15:46:29

TEST COMMENT: 1" Blow
No Return
1" Blow
No Return



PRESSURE SUMMARY

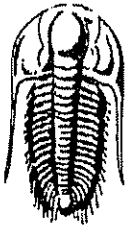
Time (Min.)	Pressure (psig)	Temp (deg F)	Annotation
0	2013.65	107.47	Initial Hydro-static
1	59.20	107.21	Open To Flow (1)
32	64.94	110.24	Shut-In(1)
77	1067.20	110.06	End Shut-In(1)
81	76.76	110.04	Open To Flow (2)
121	97.63	112.39	Shut-In(2)
183	1044.69	113.54	End Shut-In(2)
186	1932.62	113.12	Final Hydro-static

Recovery

Length (ft)	Description	Volume (bbl)
92.00	g o 70% g 30% o	0.45
92.00	g o 30% g 70% 0	1.03

Gas Rates

	Choke (Inches)	Pressure (psig)	Gas Rate (Mcf/d)



TRILOBITE
TESTING, INC.

DRILL STEM TEST REPORT

FLUID SUMMARY

Lario Oil & Gas Co

11 18 35 Wichita Ks

310 s Market St.
Wichita Ks67202

Felt Farm A 1-11

Job Ticket: 57352

DST#: 1

ATTN: Steve Davis

Test Start: 2014.10.03 @ 10:40:59

Mud and Cushion Information

Mud Type: Gel Chem

Cushion Type:

Oil API:

deg API

Mud Weight: 9.00 lb/gal

Cushion Length:

ft

Water Salinity:

0 ppm

Viscosity: 58.00 sec/qt

Cushion Volume:

bbf

Water Loss: 6.38 in³

Gas Cushion Type:

Resistivity: ohm.m

Gas Cushion Pressure:

psig

Salinity: 4000.00 ppm

Filter Cake: 1.00 inches

Recovery Information

Recovery Table

Length ft	Description	Volume bbf
92.00	g o 70% g 30% o	0.452
92.00	g o 30% g 70% 0	1.026

Total Length: 184.00 ft

Total Volume: 1.478 bbf

Num Fluid Samples: 0

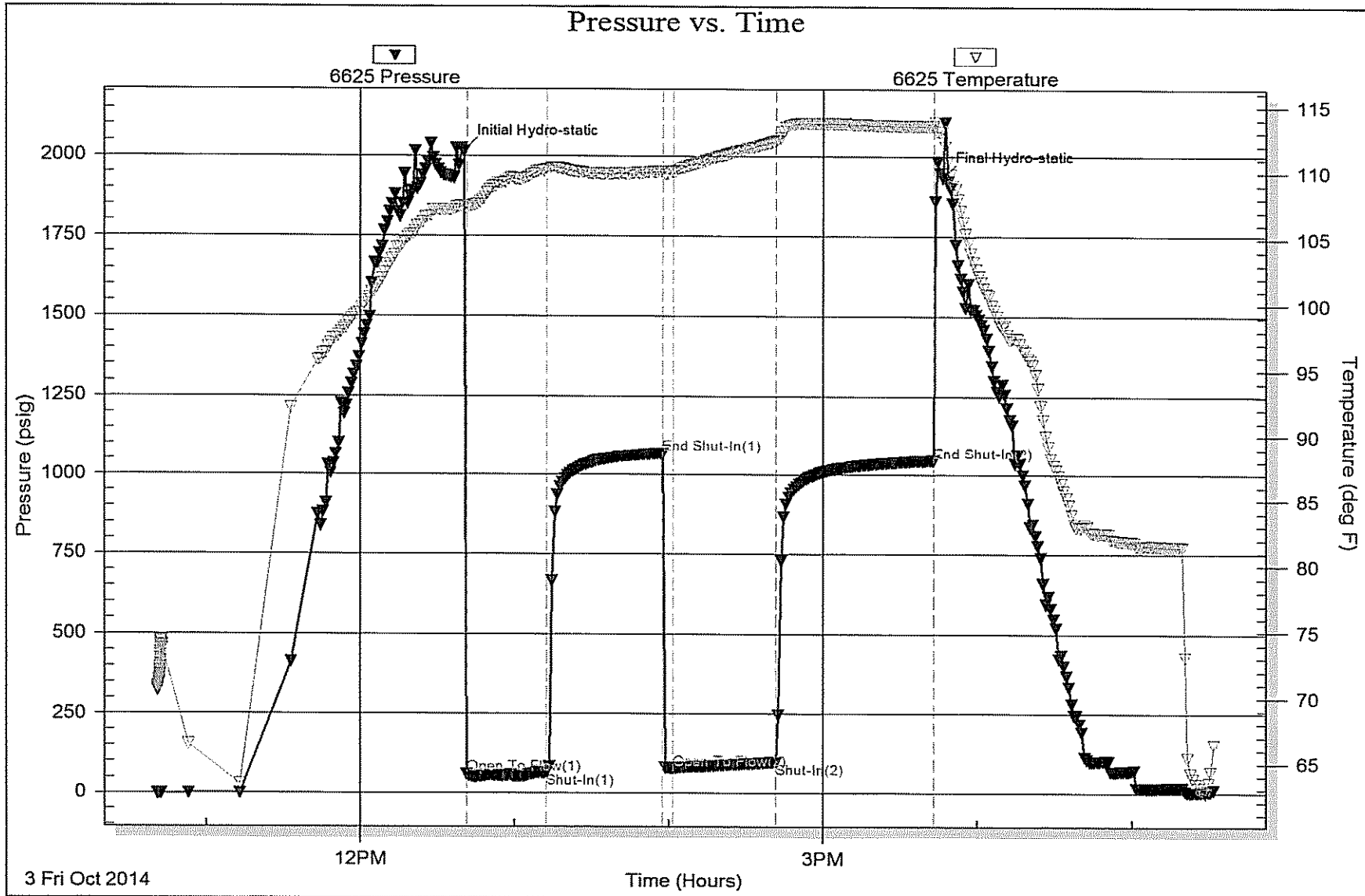
Num Gas Bombs: 0

Serial #:

Laboratory Name:

Laboratory Location:

Recovery Comments:





**TRIOBITE
TESTING, INC.**

DRILL STEM TEST REPORT

FLUID SUMMARY

Lario Oil & Gas Co

11 18 35 Wichita Ks

310 s Market St.
Wichita Ks67202

Felt Farm A 1-11

Job Ticket: 57353

DST#: 2

ATTN: Steve Davis

Test Start: 2014.10.04 @ 01:00:44

Mud and Cushion Information

Mud Type: Gel Chem

Cushion Type:

Oil API:

20 deg API

Mud Weight: 9.00 lb/gal

Cushion Length:

ft

Water Salinity:

2600 ppm

Viscosity: 50.00 sec/qt

Cushion Volume:

bbf

Water Loss: 7.59 in³

Gas Cushion Type:

Resistivity: ohm.m

Gas Cushion Pressure:

psig

Salinity: 4200.00 ppm

Filter Cake: 1.00 inches

Recovery Information

Recovery Table

Length ft	Description	Volume bbf
525.00	s w 100%	6.262
189.00	g c o m w 10 % g 60% o 10% m 20% w	2.651
632.00	g c o 10% g 90% o	8.865

Total Length: 1346.00 ft

Total Volume: 17.778 bbf

Num Fluid Samples: 0

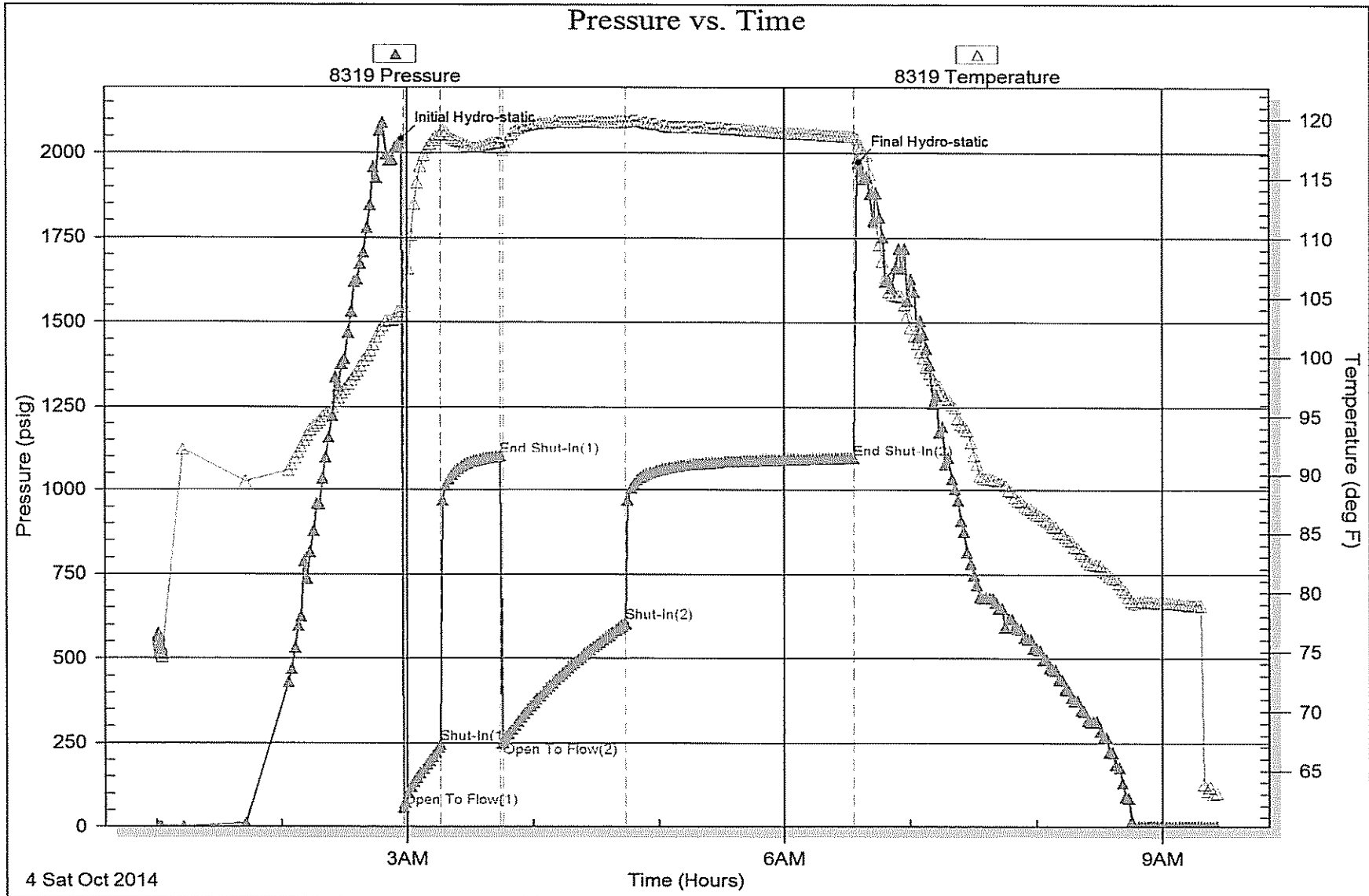
Num Gas Bombs: 0

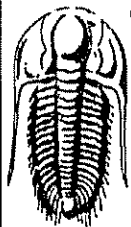
Serial #:

Laboratory Name:

Laboratory Location:

Recovery Comments: 315' gas in drill string





TRILOBITE TESTING, INC.

DRILL STEM TEST REPORT

Lario Oil & Gas Co

11 18 35 Wichita Ks

310 s Market St.
Wichita Ks67202

Felt Farm A 1-11

Job Ticket: 57354

DST#: 3

ATTN: Steve Davis

Test Start: 2014.10.05 @ 01:00:22

GENERAL INFORMATION:

Formation: **Lansing I**

Deviated: No Whipstock: ft (KB)

Time Tool Opened: 03:10:51

Time Test Ended: 08:02:51

Test Type: Conventional Bottom Hole (Reset)

Tester: James Geier

Unit No: 58

Interval: 4295.00 ft (KB) To 4325.00 ft (KB) (TVD)

Reference Elevations: 3175.00 ft (KB)

Total Depth: 4325.00 ft (KB) (TVD)

3170.00 ft (CF)

Hole Diameter: 7.88 inches Hole Condition: Fair

KB to GR/CF: 5.00 ft

Serial #: 6625

Press@RunDepth: 37.44 psig @ ft (KB)

Capacity: 8000.00 psig

Start Date: 2014.10.05

End Date:

2014.10.05

Last Calib.: 2014.10.05

Start Time: 01:00:22

End Time:

08:02:51

Time On Btm: 2014.10.05 @ 03:07:21

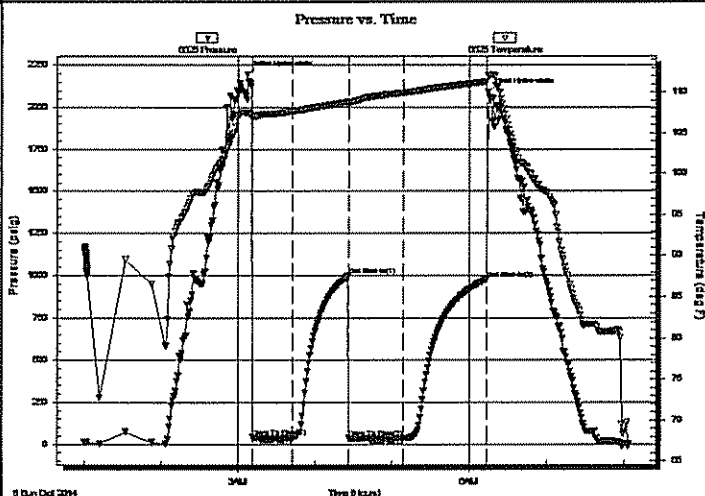
Time Off Btm: 2014.10.05 @ 06:14:51

TEST COMMENT: Weak surface blow / died in 7 min.

No return

No blow

No return



PRESSURE SUMMARY

Time (Min.)	Pressure (psig)	Temp (deg F)	Annotation
0	2195.80	107.56	Initial Hydro-static
4	41.43	106.90	Open To Flow (1)
35	41.27	107.69	Shut-In(1)
79	996.39	108.79	End Shut-In(1)
79	37.99	108.71	Open To Flow (2)
122	37.44	109.95	Shut-In(2)
187	977.58	111.30	End Shut-In(2)
188	2093.04	112.03	Final Hydro-static

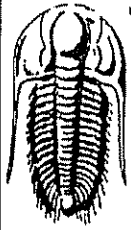
Recovery

Length (ft)	Description	Volume (bbl)
2.00	m 100%	0.01

* Recovery from multiple tests

Gas Rates

Choke (Inches)	Pressure (psig)	Gas Rate (Mcf/d)



TRILOBITE
TESTING, INC

DRILL STEM TEST REPORT

FLUID SUMMARY

Lario Oil & Gas Co

11 18 35 Wichita Ks

310 s Market St.
Wichita Ks67202

Felt Farm A 1-11

Job Ticket: 57354

DST#: 3

ATTN: Steve Davis

Test Start: 2014.10.05 @ 01:00:22

Mud and Cushion Information

Mud Type: Gel Chem

Cushion Type:

Oil API:

0 deg API

Mud Weight: 9.00 lb/gal

Cushion Length:

ft

Water Salinity:

0 ppm

Viscosity: 55.00 sec/qt

Cushion Volume:

bbl

Water Loss: 7.59 in³

Gas Cushion Type:

Resistivity: ohm.m

Gas Cushion Pressure:

psig

Salinity: 6500.00 ppm

Filter Cake: 1.00 inches

Recovery Information

Recovery Table

Length ft	Description	Volume bbl
2.00	m 100%	0.010

Total Length: 2.00 ft

Total Volume: 0.010 bbl

Num Fluid Samples: 0

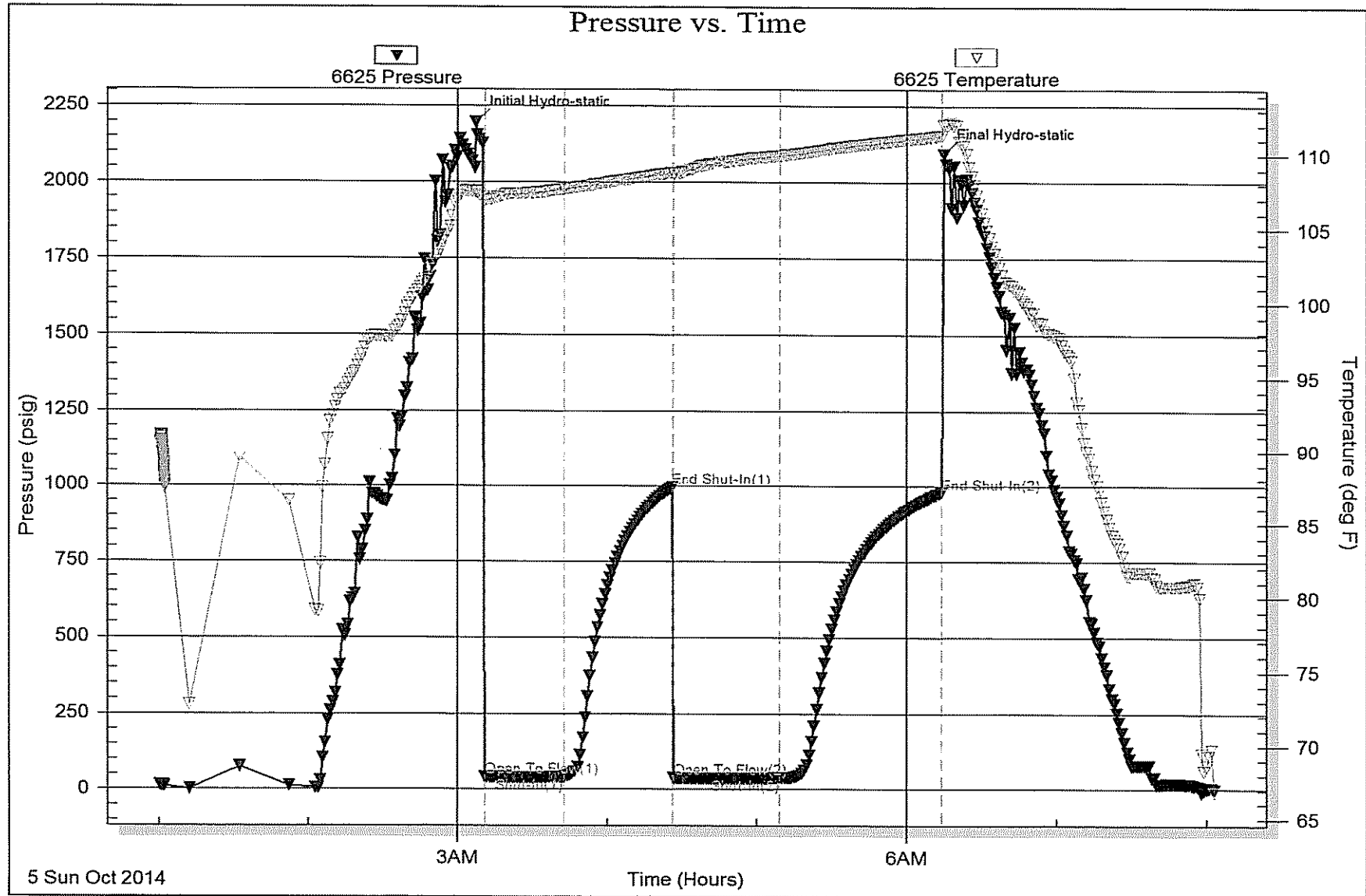
Num Gas Bombs: 0

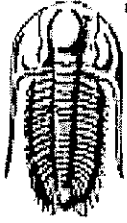
Serial #:

Laboratory Name:

Laboratory Location:

Recovery Comments:





TRILOBITE TESTING, INC

DRILL STEM TEST REPORT

Lario Oil & Gas Co

11 18 35 Wichita Ks

310 s Market St.
Wichita Ks67202

Felt Farm A 1-11

Job Ticket: 57355

DST#: 4

ATTN: Steve Davis

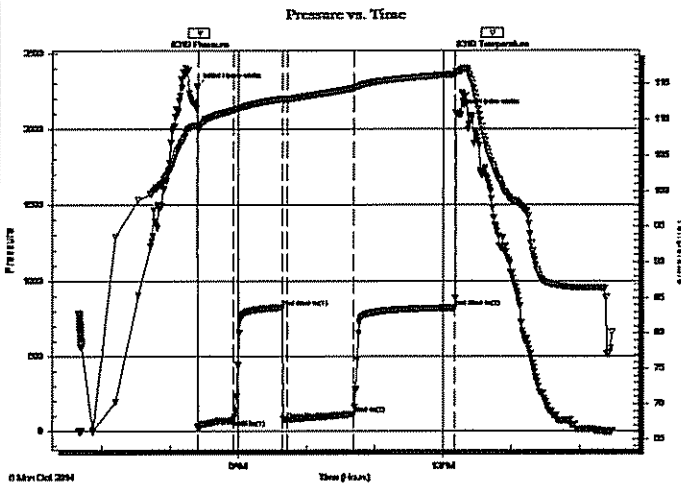
Test Start: 2014.10.06 @ 06:40:09

GENERAL INFORMATION:

Formation: **Marmaton A**
 Deviated: No Whipstock: ft (KB)
 Time Tool Opened: 08:24:38
 Time Test Ended: 14:29:08
 Interval: **4503.00 ft (KB) To 4545.00 ft (KB) (TVD)**
 Total Depth: **4545.00 ft (KB) (TVD)**
 Hole Diameter: **7.88 inches** Hole Condition: Fair
 Test Type: Conventional Bottom Hole (Reset)
 Tester: James Geier
 Unit No: 58
 Reference Elevations: 3175.00 ft (KB)
 3170.00 ft (CF)
 KB to GR/CF: 5.00 ft

Serial #: 8319 Outside
 Press@RunDepth: 115.69 psig @ 4510.00 ft (KB)
 Start Date: 2014.10.06 End Date: 2014.10.06 Capacity: 8000.00 psig
 Start Time: 06:40:09 End Time: 14:29:08 Last Calib.: 2014.10.06
 Time On Btm: 2014.10.06 @ 08:23:38
 Time Off Btm: 2014.10.06 @ 12:11:08

TEST COMMENT: Blow 1" in 10 min. / 5" blow @ 29 min.
 No Return
 Blow 6"
 Return blow in 15 min. / died in 20 min.



PRESSURE SUMMARY

Time (Min.)	Pressure (psig)	Temp (deg F)	Annotation
0	2277.32	109.18	Initial Hydro-static
1	29.67	108.71	Open To Flow (1)
32	74.44	111.31	Shut-In(1)
75	823.60	112.89	End Shut-In(1)
79	80.11	112.82	Open To Flow (2)
138	115.69	114.39	Shut-In(2)
227	821.63	116.34	End Shut-In(2)
228	2105.91	116.78	Final Hydro-static

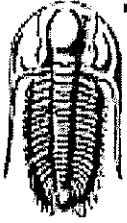
Recovery

Length (ft)	Description	Volume (bbl)
121.00	g 20% o70% 10% m	0.60
127.00	g 30% 50%o 20%m	1.78

* Recovery from multiple tests

Gas Rates

	Choke (inches)	Pressure (psig)	Gas Rate (Mcf/d)



**TRILOBITE
TESTING, INC**

DRILL STEM TEST REPORT

FLUID SUMMARY

Lario Oil & Gas Co

11 18 35 Wichita Ks

310 s Market St.
Wichita Ks67202

Felt Farm A 1-11

Job Ticket: 57355

DST#: 4

ATTN: Steve Davis

Test Start: 2014.10.06 @ 06:40:09

Mud and Cushion Information

Mud Type: Gel Chem

Cushion Type:

Oil API:

24 deg API

Mud Weight: 9.00 lb/gal

Cushion Length:

ft

Water Salinity:

0 ppm

Viscosity: 70.00 sec/qt

Cushion Volume:

bbl

Water Loss: 11.17 in³

Gas Cushion Type:

Resistivity: ohm.m

Gas Cushion Pressure:

psig

Salinity: 8500.00 ppm

Filter Cake: 2.00 inches

Recovery Information

Recovery Table

Length ft	Description	Volume bbl
121.00	g 20% o70% 10% m	0.595
127.00	g 30% 50%o 20%m	1.781

Total Length: 248.00 ft

Total Volume: 2.376 bbl

Num Fluid Samples: 0

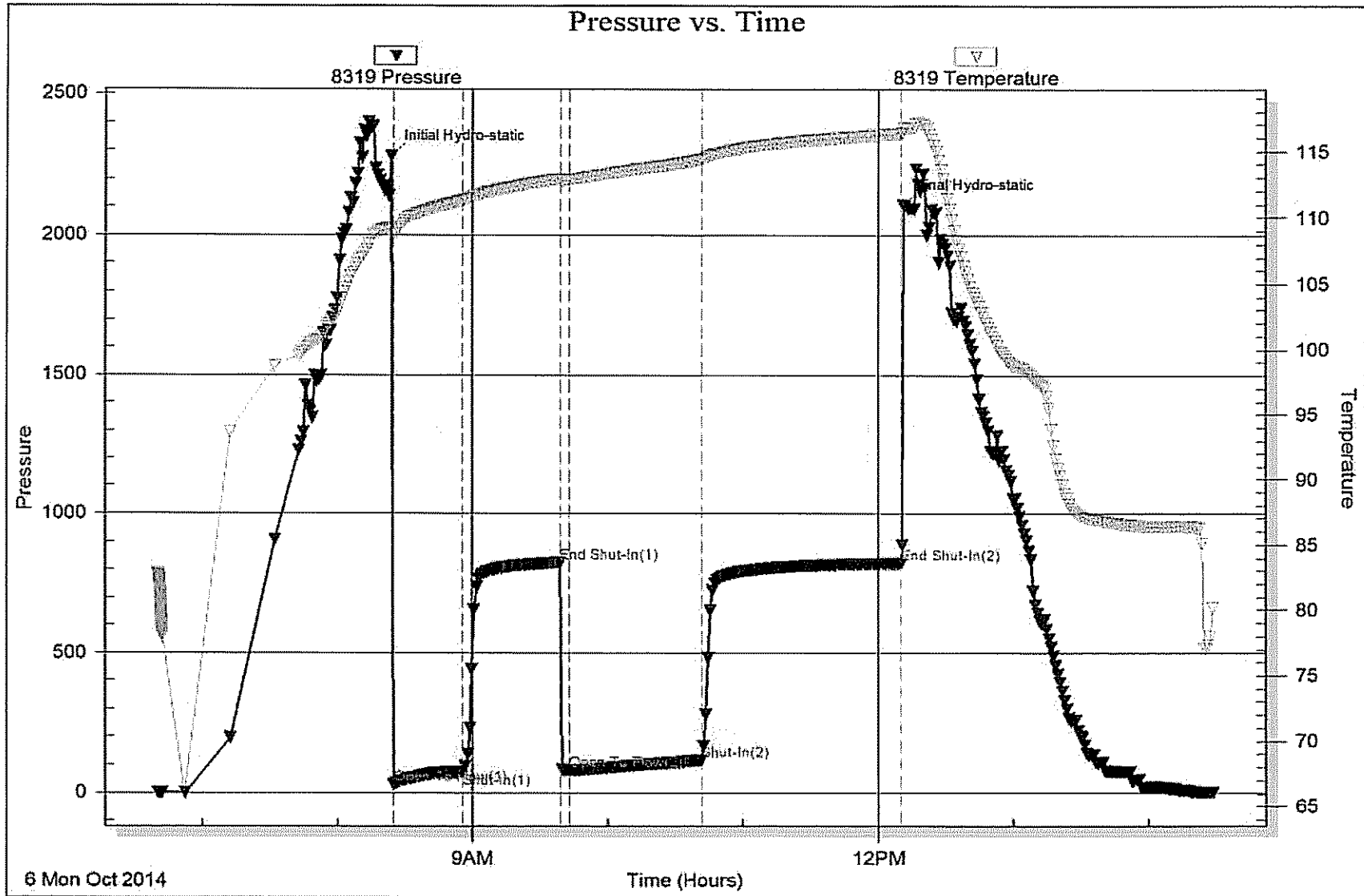
Num Gas Bombs: 0

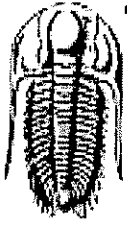
Serial #:

Laboratory Name:

Laboratory Location:

Recovery Comments: 269' gas in pipe





TRILOBITE TESTING, INC

DRILL STEM TEST REPORT

Lario Oil & Gas Co

11 18s 35w Wichita Ks

310 s Market St.
Wichita Ks67202

Felt Farm A 1-11

Job Ticket: 57356

DST#: 5

ATTN: Steve Davis

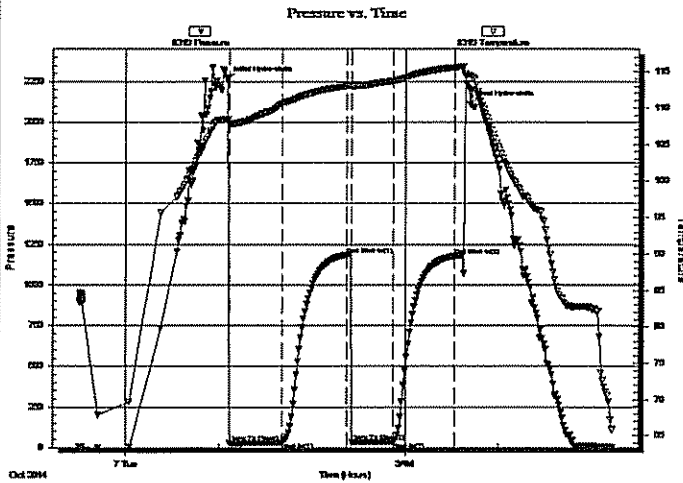
Test Start: 2014.10.06 @ 11:30:14

GENERAL INFORMATION:

Formation: **Marmaton B & C**
 Deviated: No Whipstock: ft (KB)
 Time Tool Opened: 13:06:43
 Time Test Ended: 04:45:14
 Interval: **4543.00 ft (KB) To 4590.00 ft (KB) (TVD)**
 Total Depth: **4590.00 ft (KB) (TVD)**
 Hole Diameter: **7.88 inches**Hole Condition: **Poor**
 Test Type: **Conventional Bottom Hole (Reset)**
 Tester: **James Geier**
 Unit No: **58**
 Reference Elevations: **3175.00 ft (KB)**
3170.00 ft (CF)
 KB to GR/CF: **5.00 ft**

Serial #: 8319 Outside
 Press@RunDepth: **35.93 psig @ 4545.00 ft (KB)**
 Start Date: **2014.10.06** End Date: **2014.10.07** Capacity: **8000.00 psig**
 Start Time: **23:30:14** End Time: **05:13:43** Last Calib.: **2014.10.07**
 Time On Blm: **2014.10.07 @ 01:05:13**
 Time Off Blm: **2014.10.07 @ 03:41:43**

TEST COMMENT: IF: No blow
 IS: No return
 FF: No blow
 FS: No return



PRESSURE SUMMARY

Time (Min.)	Pressure (psig)	Temp (deg F)	Annotation
0	2257.78	108.45	Initial Hydro-static
2	27.07	107.88	Open To Flow (1)
36	33.57	110.65	Shut-in(1)
78	1185.90	113.07	End Shut-in(1)
81	32.17	112.96	Open To Flow (2)
107	35.93	113.73	Shut-in(2)
147	1177.40	115.59	End Shut-in(2)
157	2109.95	114.48	Final Hydro-static

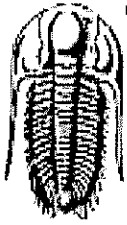
Recovery

Length (ft)	Description	Volume (bbl)
2.00	100% M	0.01

* Recovery from multiple tests

Gas Rates

	Choke (inches)	Pressure (psig)	Gas Rate (Mcf/d)



**TRILOBITE
TESTING, INC**

DRILL STEM TEST REPORT

FLUID SUMMARY

Lario Oil & Gas Co

11 18s 35w Wichita Ks

310 s Market St.
Wichita Ks67202

Felt Farm A 1-11

Job Ticket: 57356

DST#: 5

ATTN: Steve Davis

Test Start: 2014.10.06 @ 11:30:14

Mud and Cushion Information

Mud Type: Gel Chem

Cushion Type:

Oil API:

0 deg API

Mud Weight: 9.00 lb/gal

Cushion Length:

ft

Water Salinity:

0 ppm

Viscosity: 50.00 sec/qt

Cushion Volume:

bbl

Water Loss: 11.97 in³

Gas Cushion Type:

Resistivity: ohm.m

Gas Cushion Pressure:

psig

Salinity: 8400.00 ppm

Filter Cake: 2.00 inches

Recovery Information

Recovery Table

Length ft	Description	Volume bbl
2.00	100% M	0.010

Total Length: 2.00 ft

Total Volume: 0.010 bbl

Num Fluid Samples: 0

Num Gas Bombs: 0

Serial #:

Laboratory Name:

Laboratory Location:

Recovery Comments:

