



1229863

Operator Name: _____ Lease Name: _____ Well #: _____

Sec. _____ Twp. _____ S. R. _____ East West County: _____

INSTRUCTIONS: Show important tops of formations penetrated. Detail all cores. Report all final copies of drill stems tests giving interval tested, time tool open and closed, flowing and shut-in pressures, whether shut-in pressure reached static level, hydrostatic pressures, bottom hole temperature, fluid recovery, and flow rates if gas to surface test, along with final chart(s). Attach extra sheet if more space is needed.

Final Radioactivity Log, Final Logs run to obtain Geophysical Data and Final Electric Logs must be emailed to kcc-well-logs@kcc.ks.gov. Digital electronic log files must be submitted in LAS version 2.0 or newer AND an image file (TIFF or PDF).

Drill Stem Tests Taken <i>(Attach Additional Sheets)</i>	<input type="checkbox"/> Yes <input type="checkbox"/> No	<input type="checkbox"/> Log	Formation (Top), Depth and Datum	<input type="checkbox"/> Sample
Samples Sent to Geological Survey	<input type="checkbox"/> Yes <input type="checkbox"/> No	Name	Top	Datum
Cores Taken	<input type="checkbox"/> Yes <input type="checkbox"/> No			
Electric Log Run	<input type="checkbox"/> Yes <input type="checkbox"/> No			
List All E. Logs Run:				

CASING RECORD <input type="checkbox"/> New <input type="checkbox"/> Used							
Report all strings set-conductor, surface, intermediate, production, etc.							
Purpose of String	Size Hole Drilled	Size Casing Set (In O.D.)	Weight Lbs. / Ft.	Setting Depth	Type of Cement	# Sacks Used	Type and Percent Additives

ADDITIONAL CEMENTING / SQUEEZE RECORD				
Purpose:	Depth Top Bottom	Type of Cement	# Sacks Used	Type and Percent Additives
<input type="checkbox"/> Perforate				
<input type="checkbox"/> Protect Casing				
<input type="checkbox"/> Plug Back TD				
<input type="checkbox"/> Plug Off Zone				

Did you perform a hydraulic fracturing treatment on this well? Yes No *(If No, skip questions 2 and 3)*

Does the volume of the total base fluid of the hydraulic fracturing treatment exceed 350,000 gallons? Yes No *(If No, skip question 3)*

Was the hydraulic fracturing treatment information submitted to the chemical disclosure registry? Yes No *(If No, fill out Page Three of the ACO-1)*

Shots Per Foot	PERFORATION RECORD - Bridge Plugs Set/Type Specify Footage of Each Interval Perforated	Acid, Fracture, Shot, Cement Squeeze Record <i>(Amount and Kind of Material Used)</i>	Depth

TUBING RECORD: Size: _____ Set At: _____ Packer At: _____ Liner Run: Yes No

Date of First, Resumed Production, SWD or ENHR: _____ Producing Method:
 Flowing Pumping Gas Lift Other *(Explain)* _____

Estimated Production Per 24 Hours	Oil Bbls.	Gas Mcf	Water Bbls.	Gas-Oil Ratio	Gravity

DISPOSITION OF GAS: <input type="checkbox"/> Vented <input type="checkbox"/> Sold <input type="checkbox"/> Used on Lease <i>(If vented, Submit ACO-18.)</i>	METHOD OF COMPLETION: <input type="checkbox"/> Open Hole <input type="checkbox"/> Perf. <input type="checkbox"/> Dually Comp. <input type="checkbox"/> Commingled <i>(Submit ACO-5)</i> <input type="checkbox"/> Other <i>(Specify)</i> _____ <input type="checkbox"/> Other <i>(Specify)</i> _____	PRODUCTION INTERVAL: _____ _____
--	---	---

Damar Resources Inc.
Romme #2
NE-SW-SW-SW (600'FSL & 335'FWL)
Section 22-13s-17w
Ellis County, Kansas

Page 1

5 1/2" Production Casing Set

Contractor: Discovery Drilling Co. (rig #3)
Commenced: June 12, 2014
Completed: June 19, 20141
Elevation: 1979' K.B., 1977' D.F., 1971' G.L.
Casing program: Surface; 8 5/8" @ 1200'
Production, 5 1/2" @ 3639'

Sample: Samples saved and examined 2950' to the Rotary Total Depth.

Drilling time: One (1) foot drilling time recorded and kept 2950 ft. to the Rotary Total Depth.

Measurements: All depths measured from the Kelly Bushing.

Drill Stem Tests: There were three (3) Drill Stem Tests ran by Trilobite Testing Co.

Electric Log: By Pioneer Energy Services; Dual Induction, Dual Compensated Porosity Log and Microresistivity Log.

	<u>Formation</u>	<u>Log Depth</u>	<u>Sub-Sea Datum</u>
	Anhydrite	1203	+776
	Base Anhydrite	1245	+734
	Topoka	3000	-1021
	Heebner	3242	-1263
	Toronto	3262	-1283
	Lansing	3286	-1307
	Base Kansas City	3514	-1535
	Arbuckle	3529	-1550
	Rotary Total Depth	3640	-1661
	Log Total Depth	3640	-1661

All tops and zones corrected to Electric Log Measurement.

SAMPLE ANALYSIS, SHOWS OF OIL, TESTING DATA, ETC.

TOPEKA SECTION

3000-3241' No shows of oil and/or gas was noted in the drilling of the Topeka Section (see attached drilling time/sample log.

Damar Resources Inc.
Romme #2
NE-SW-SW-SW (600'FSL & 335'FWL)
Section 22-13s-17w
Ellis County, Kansas

Page 2

TORONTO SECTION

3262-3278' Limestone, tan, fossiliferous, chalky, few cherty; poor visible porosity, trace black stain, no show of free oil and no odor in fresh sample.

LANSING SECTION

3286-3296' Limestone, white/cream, finely crystalline, chalky, poor visible porosity, no show of oil and questionable odor in fresh samples.

3300-3306' Limestone, gray, tan, chalky, few cherty, dense.

3310-3317' Limestone, gray, white, oomoldic, fair oomoldic porosity, light brown stain; trace of free oil and no odor in fresh samples.

3331-3340' Limestone, white, gray, cream, finely crystalline, chalky, fossiliferous in part, trace poor edge/surface staining, no show of free oils and no odor in fresh samples.

3358-3368' Limestone, white, cream, finely crystalline, oolitic, poor visible porosity, poor stain, no free oil and no odor in fresh samples.

3380-3389' Limestone, white, tan oolitic, poor visible porosity, trace poor stain, trace of free oil and no odor in fresh samples.

Drill Stem Test #1 3240-3400

Times: 5-60-60-90

Blow: Weak

**Recovery: 62' slightly oil speckled mud
(1% oil, 99% mud)**

Pressures:	ISIP	818	psi
	FSIP	744	psi
	IFP	89-94	psi
	FFP	95-95	psi
	HSH	1613-1560	psi

3420-3430' Limestone, white, cream, finely crystalline poorly developed porosity.

3444-3456' Limestone, white, gray, oolitic, chalky, poor porosity, brown stain to golden brown stain, no free oil and faint odor in fresh samples.

3458-3470' Limestone, gray, white, sub-oomoldic, chalky, no stain, no free oil and questionable odor in fresh samples.

3484-3494' Limestone, gray, white, finely crystalline, few fossiliferous, chalky poor porosity, no shows.

ARBUCKLE SECTION

3529-3538' Dolomite, tan, gray, finely crystalline, sucrosic, scattered pinpoint porosity, trace brown stain, trace of free oil and faint odor in fresh samples.

3540-3550' Dolomite, gray, white, fine and medium crystalline, fair inter-crystalline porosity, fair stain and saturation, show of free oil and faint odor in fresh samples.

Drill Stem Test #2 **3508-3552**

Times: 5-60-45-90

Blow: Strong

Recovery: 189' gas in pipe
1071' heavily oil and gas cut muddy water
(20% gas; 45% oil; 30% water; 5% water)
25' oil speckled water

Pressures: ISIP 796 psi
FSIP 819 psi
IFP 100-200 psi
FFP 237-404 psi
HSH 1726-1658 psi

3552-3562' Dolomite, tan, sucrosic, scattered pinpoint type porosity, good stain and saturation, (few 100%), plus white/gray, medium crystalline dolomite, good vuggy porosity, good stain and saturation, good show of free oil and good odor in fresh samples.

Drill Stem Test #3 **3352-3563**

Times: 5-60-60-90

Blow: Fair to good

Recovery: 491' gas in pipe
141' clean oil
63' heavily oil and gas cut muddy water
(3% mud; 25% water; 27% gas; 45% oil)

Pressures: ISIP 522 psi
FSIP 562 psi
IFP 25-30 psi
FFP 38-72 psi
HSH 1703-1706 psi
(plugging action on flow periods)

Damar Resources Inc.
Romme #2
NE-SW-SW-SW (600'FSL & 335'FWL)
Section 22-13s-17^w
Ellis County, Kansas

Page 4

3555-3585'	Dolomite, cream, tan, medium crystalline, few finely crystalline fair pinpoint and inter-crystalline type porosity, brown stain, show of free oil and faint odor in fresh samples.
3585-3602'	Dolomite, as above, few sandy, plus trace white chert, brown stain, show of free oil and faint odor.
3602-3620'	Dolomite, white/gray, sub-oomoldic, fair oomoldic and vuggy type porosity, black dead stain, show of free oil (50% dead) and faint odor in fresh samples.
3620-3635'	Dolomite, tan pink, finely crystalline, poorly developed porosity, no shows.
3635-3640'	Dolomite, as above, plus white, chert, no shows.

Rotary Total Depth 3640

Recommendations:
5 ½" production casing was set and cemented on the Romme #2.

Respectfully submitted;

James C Musgrove
Petroleum Geologist



DRILL STEM TEST REPORT

Prepared For: **Damar Resources**

234 West 11 Street Suite A
Hays KS. 67601

ATTN: Jim Muscgrove

Romme #2

22-13s-17w Ellis,KS

Start Date: 2014.06.16 @ 22:20:00

End Date: 2014.06.17 @ 06:31:00

Job Ticket #: 55292 DST #: 1

Trilobite Testing, Inc
PO Box 362 Hays, KS 67601
ph: 785-625-4778 fax: 785-625-5620

Printed: 2014.06.19 @ 16:44:19



TRILOBITE TESTING, INC

DRILL STEM TEST REPORT

Damar Resources
 234 West 11 Street Suite A
 Hays KS. 67601
 ATTN: Jim Muscgrove

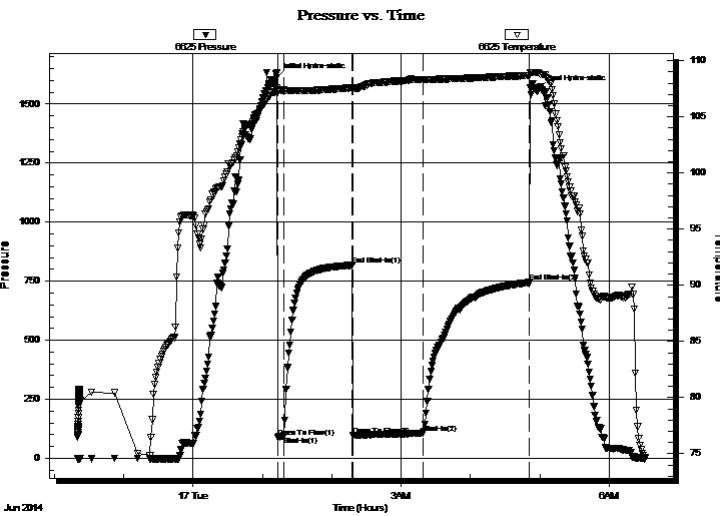
22-13s-17w Ellis,KS
Romme #2
 Job Ticket: 55292 **DST#: 1**
 Test Start: 2014.06.16 @ 22:20:00

GENERAL INFORMATION:

Formation: **Toronto - LKC G**
 Deviated: No Whipstock: ft (KB)
 Time Tool Opened: 01:13:00
 Time Test Ended: 06:31:00
 Interval: **3240.00 ft (KB) To 3400.00 ft (KB) (TVD)**
 Total Depth: 3400.00 ft (KB) (TVD)
 Hole Diameter: 7.88 inches Hole Condition: Fair
 Test Type: Conventional Bottom Hole (Initial)
 Tester: Bob Hamel
 Unit No: 67
 Reference Elevations: 1980.00 ft (KB)
 1972.00 ft (CF)
 KB to GR/CF: 8.00 ft

Serial #: 6625 Outside
 Press@RunDepth: 107.35 psig @ 3371.00 ft (KB) Capacity: 8000.00 psig
 Start Date: 2014.06.16 End Date: 2014.06.17 Last Calib.: 2014.06.16
 Start Time: 22:20:01 End Time: 06:31:00 Time On Btm: 2014.06.17 @ 01:12:00
 Time Off Btm: 2014.06.17 @ 04:58:30

TEST COMMENT: I.F. - 5 - Weak blow built to 2'
 I.S.I. - 60 - No blow back
 F.F. - 60 Weak blow built to 2'
 F.S.I. - 90 - No blow back



PRESSURE SUMMARY

Time (Min.)	Pressure (psig)	Temp (deg F)	Annotation
0	1613.34	107.41	Initial Hydro-static
1	89.35	107.19	Open To Flow (1)
7	94.40	107.40	Shut-In(1)
66	817.78	107.60	End Shut-In(1)
66	95.21	107.43	Open To Flow (2)
127	107.35	108.30	Shut-In(2)
219	744.88	108.69	End Shut-In(2)
227	1559.82	108.92	Final Hydro-static

Recovery

Length (ft)	Description	Volume (bbl)
62.00	S,O,S,M 1%O 99%M (FEW OIL SPECS)	0.58

Gas Rates

Choke (inches)	Pressure (psig)	Gas Rate (Mcf/d)



**TRILOBITE
TESTING, INC**

DRILL STEM TEST REPORT

TOOL DIAGRAM

Damar Resources
234 West 11 Street Suite A
Hays KS. 67601
ATTN: Jim Muscgrove

22-13s-17w Ellis,KS
Romme #2
Job Ticket: 55292 **DST#: 1**
Test Start: 2014.06.16 @ 22:20:00

Tool Information

Drill Pipe:	Length: 3204.00 ft	Diameter: 3.80 inches	Volume: 44.94 bbl	Tool Weight: 2000.00 lb
Heavy Wt. Pipe:	Length: 0.00 ft	Diameter: 2.70 inches	Volume: 0.00 bbl	Weight set on Packer: 30000.00 lb
Drill Collar:	Length: 32.00 ft	Diameter: 2.25 inches	Volume: 0.16 bbl	Weight to Pull Loose: 70000.00 lb
			<u>Total Volume: 45.10 bbl</u>	Tool Chased 4.00 ft
Drill Pipe Above KB:	16.00 ft			String Weight: Initial 50000.00 lb
Depth to Top Packer:	3240.00 ft			Final 52000.00 lb
Depth to Bottom Packer:	ft			
Interval between Packers:	160.00 ft			
Tool Length:	180.00 ft			
Number of Packers:	2	Diameter: 6.75 inches		

Tool Comments:

Tool Description	Length (ft)	Serial No.	Position	Depth (ft)	Accum. Lengths
-------------------------	--------------------	-------------------	-----------------	-------------------	-----------------------

Change Over Sub	1.00			3221.00	
Shut In Tool	5.00			3226.00	
Hydraulic tool	5.00			3231.00	
Packer	4.00			3235.00	20.00 Bottom Of Top Packer
Packer	5.00			3240.00	
Stubb	1.00			3241.00	
Perforations	1.00			3242.00	
Change Over Sub	1.00			3243.00	
Drill Pipe	127.00			3370.00	
Change Over Sub	1.00			3371.00	
Recorder	0.00	6625	Outside	3371.00	
Recorder	0.00	8319	Inside	3371.00	
Perforations	25.00			3396.00	
Bullnose	4.00			3400.00	160.00 Bottom Packers & Anchor

Total Tool Length: 180.00



**TRILOBITE
TESTING, INC**

DRILL STEM TEST REPORT

FLUID SUMMARY

Damar Resources
234 West 11 Street Suite A
Hays KS. 67601
ATTN: Jim Muscgrove

22-13s-17w Ellis,KS
Romme #2
Job Ticket: 55292 **DST#: 1**
Test Start: 2014.06.16 @ 22:20:00

Mud and Cushion Information

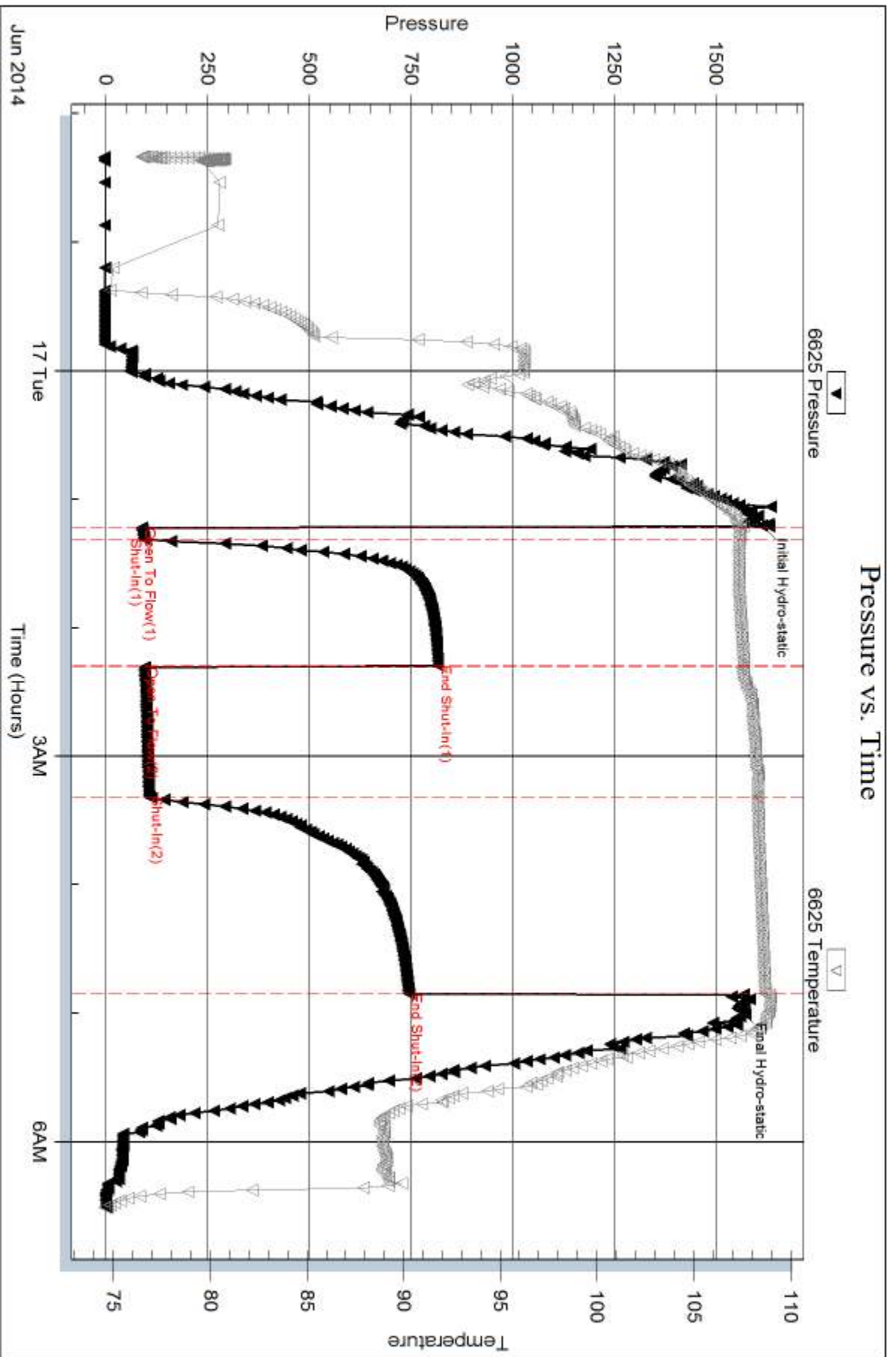
Mud Type: Gel Chem	Cushion Type:	Oil API:	deg API
Mud Weight: 9.00 lb/gal	Cushion Length: ft	Water Salinity:	ppm
Viscosity: 51.00 sec/qt	Cushion Volume: bbl		
Water Loss: 8.79 in ³	Gas Cushion Type:		
Resistivity: 0.00 ohm.m	Gas Cushion Pressure: psig		
Salinity: 3000.00 ppm			
Filter Cake: 1.00 inches			

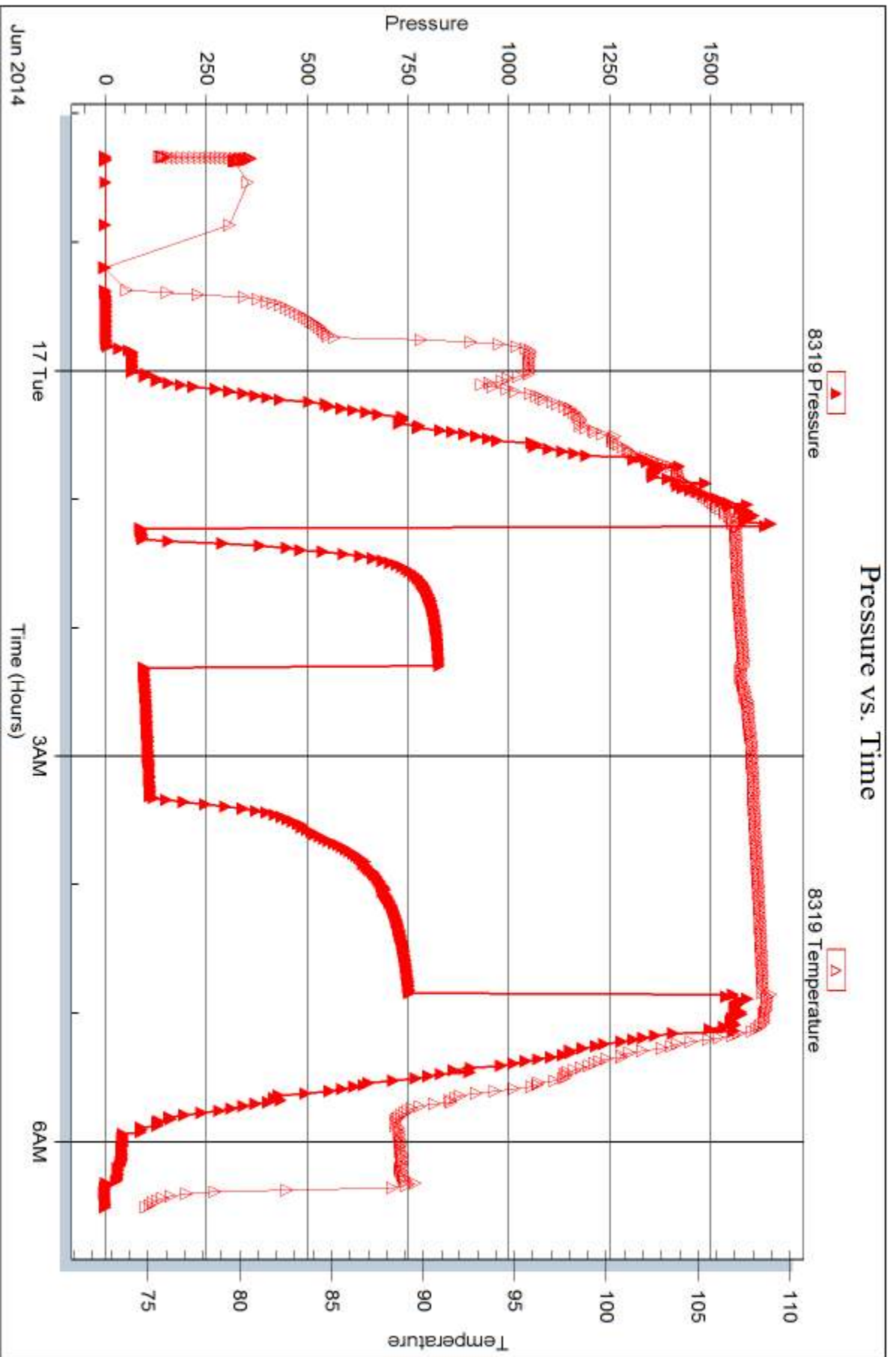
Recovery Information

Recovery Table

Length ft	Description	Volume bbl
62.00	S,O,S,M 1%O 99%M (FEW OIL SPECS)	0.578

Total Length: 62.00 ft Total Volume: 0.578 bbl
Num Fluid Samples: 0 Num Gas Bombs: 0 Serial #:
Laboratory Name: Laboratory Location:
Recovery Comments:







DRILL STEM TEST REPORT

Prepared For: **Damar Resources**

234 West 11 Street Suite A
Hays KS. 67601

ATTN: Jim Muscgrove

Romme #2

22-13s-17w Ellis,KS

Start Date: 2014.06.17 @ 21:30:00

End Date: 2014.06.18 @ 05:53:00

Job Ticket #: 55293 DST #: 2

Trilobite Testing, Inc
PO Box 362 Hays, KS 67601
ph: 785-625-4778 fax: 785-625-5620

Printed: 2014.06.19 @ 16:43:51



**TRILOBITE
TESTING, INC**

DRILL STEM TEST REPORT

Damar Resources
234 West 11 Street Suite A
Hays KS. 67601
ATTN: Jim Muscgrove

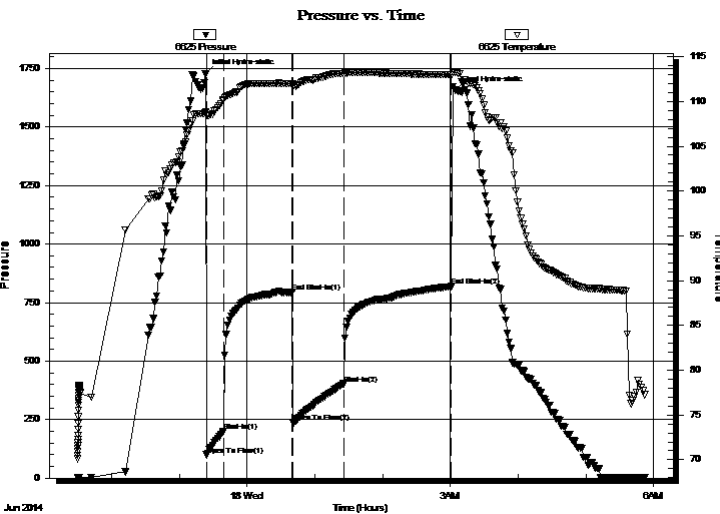
22-13s-17w Ellis,KS
Romme #2
Job Ticket: 55293 **DST#: 2**
Test Start: 2014.06.17 @ 21:30:00

GENERAL INFORMATION:

Formation: **Arbuckle**
Deviated: No Whipstock: ft (KB)
Time Tool Opened: 23:24:00
Time Test Ended: 05:53:00
Interval: **3508.00 ft (KB) To 3552.00 ft (KB) (TVD)**
Total Depth: 3552.00 ft (KB) (TVD)
Hole Diameter: 7.88 inches Hole Condition: Fair
Reference Elevations: 1980.00 ft (KB)
1972.00 ft (CF)
KB to GR/CF: 8.00 ft
Test Type: Conventional Bottom Hole (Reset)
Tester: Bob Hamel
Unit No: 67

Serial #: 6625 Outside
Press@RunDepth: 403.53 psig @ 3548.00 ft (KB) Capacity: 8000.00 psig
Start Date: 2014.06.17 End Date: 2014.06.18 Last Calib.: 2014.06.17
Start Time: 21:30:01 End Time: 05:53:00 Time On Btm: 2014.06.17 @ 23:23:00
Time Off Btm: 2014.06.18 @ 03:04:00

TEST COMMENT: I.F. - 15 BOB in 2 min
I.S.I. - 60 - Ww eak surface blow built to BOB in 45 min
F.F. - 45 - BOB instantly
F.S.I. - 90 BOB in 15 min



PRESSURE SUMMARY

Time (Min.)	Pressure (psig)	Temp (deg F)	Annotation
0	1726.61	108.71	Initial Hydro-static
1	99.55	108.45	Open To Flow (1)
16	199.88	110.22	Shut-In(1)
77	795.51	112.02	End Shut-In(1)
78	237.20	111.91	Open To Flow (2)
123	403.53	113.13	Shut-In(2)
218	819.18	112.94	End Shut-In(2)
221	1657.50	113.21	Final Hydro-static

Recovery

Length (ft)	Description	Volume (bbl)
25.00	S,O,S,W, 100%W (FEW OIL SPECS)	0.12
1071.00	S,M,C,G,W,O, 5%M 20%G 30%W 45%O	14.96
0.00	189' G.I.P.	0.00

* Recovery from multiple tests

Gas Rates

Choke (inches)	Pressure (psig)	Gas Rate (Mcf/d)



**TRILOBITE
TESTING, INC**

DRILL STEM TEST REPORT

TOOL DIAGRAM

Damar Resources
234 West 11 Street Suite A
Hays KS. 67601
ATTN: Jim Muscgrove

22-13s-17w Ellis,KS
Romme #2
Job Ticket: 55293 **DST#: 2**
Test Start: 2014.06.17 @ 21:30:00

Tool Information

Drill Pipe:	Length: 3486.00 ft	Diameter: 3.80 inches	Volume: 48.90 bbl	Tool Weight: 2000.00 lb
Heavy Wt. Pipe:	Length: 0.00 ft	Diameter: 2.70 inches	Volume: 0.00 bbl	Weight set on Packer: 30000.00 lb
Drill Collar:	Length: 32.00 ft	Diameter: 2.25 inches	Volume: 0.16 bbl	Weight to Pull Loose: 60000.00 lb
			<u>Total Volume: 49.06 bbl</u>	Tool Chased 0.00 ft
Drill Pipe Above KB:	30.00 ft			String Weight: Initial 52000.00 lb
Depth to Top Packer:	3508.00 ft			Final 58000.00 lb
Depth to Bottom Packer:	ft			
Interval between Packers:	44.00 ft			
Tool Length:	64.00 ft			
Number of Packers:	2	Diameter: 6.75 inches		

Tool Comments:

Tool Description

Length (ft) Serial No. Position Depth (ft) Accum. Lengths

Tool Description	Length (ft)	Serial No.	Position	Depth (ft)	Accum. Lengths
Change Over Sub	1.00			3489.00	
Shut In Tool	5.00			3494.00	
Hydraulic tool	5.00			3499.00	
Packer	4.00			3503.00	20.00 Bottom Of Top Packer
Packer	5.00			3508.00	
Stubb	1.00			3509.00	
Perforations	6.00			3515.00	
Change Over Sub	1.00			3516.00	
Drill Pipe	31.00			3547.00	
Change Over Sub	1.00			3548.00	
Recorder	0.00	6625	Outside	3548.00	
Recorder	0.00	8319	Inside	3548.00	
Bullnose	4.00			3552.00	44.00 Bottom Packers & Anchor

Total Tool Length: 64.00



**TRILOBITE
TESTING, INC**

DRILL STEM TEST REPORT

FLUID SUMMARY

Damar Resources
234 West 11 Street Suite A
Hays KS. 67601
ATTN: Jim Muscgrove

22-13s-17w Ellis,KS
Romme #2
Job Ticket: 55293 **DST#: 2**
Test Start: 2014.06.17 @ 21:30:00

Mud and Cushion Information

Mud Type: Gel Chem	Cushion Type:	Oil API:	deg API
Mud Weight: 9.00 lb/gal	Cushion Length: ft	Water Salinity:	49000 ppm
Viscosity: 52.00 sec/qt	Cushion Volume: bbl		
Water Loss: 7.99 in ³	Gas Cushion Type:		
Resistivity: 0.00 ohm.m	Gas Cushion Pressure: psig		
Salinity: 45000.00 ppm			
Filter Cake: 1.00 inches			

Recovery Information

Recovery Table

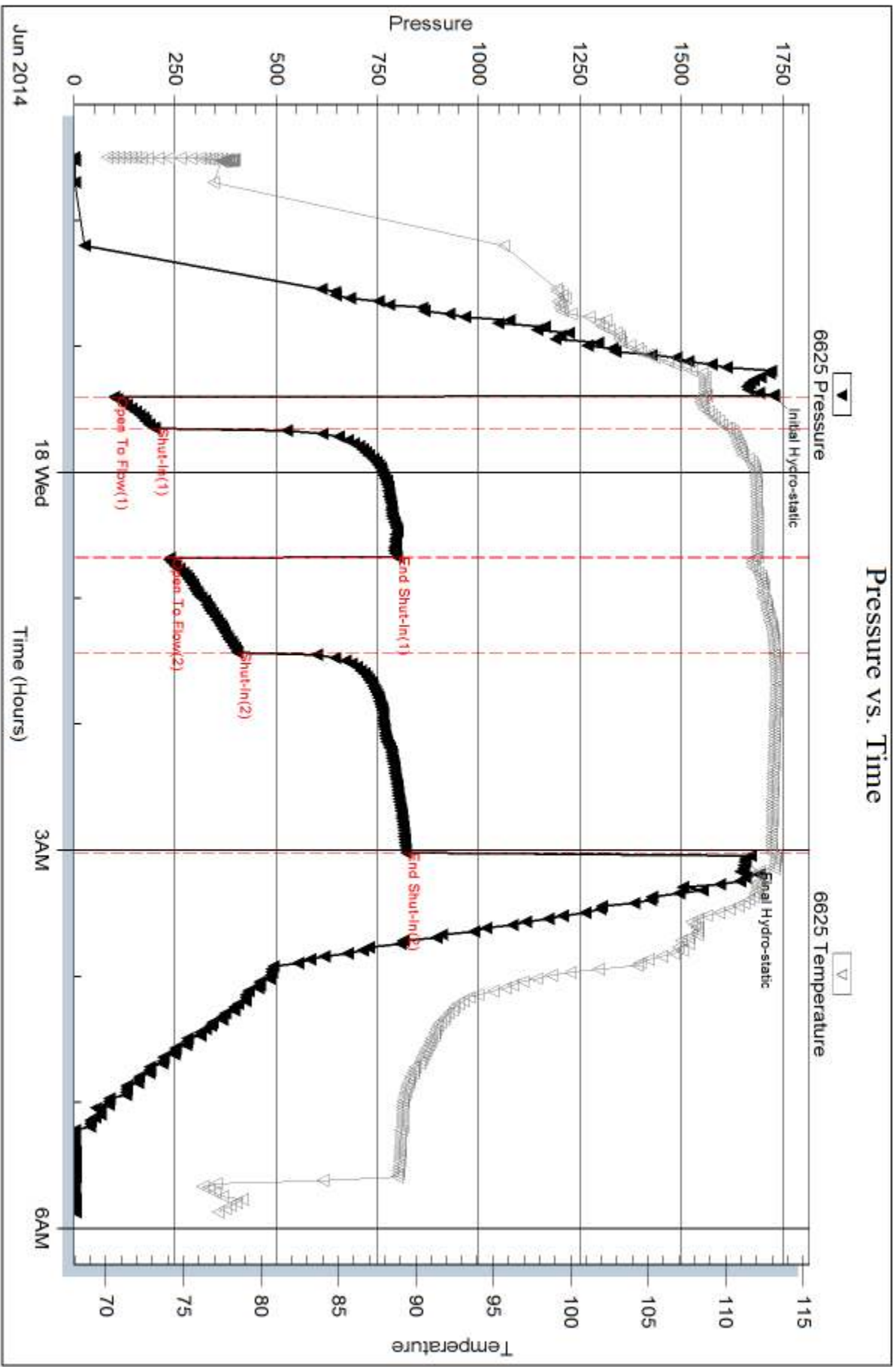
Length ft	Description	Volume bbl
25.00	S,O,S,W, 100%W (FEW OIL SPECS)	0.123
1071.00	S,M,C,G,W,O, 5%M 20%G 30%W 45%O	14.960
0.00	189' G.I.P.	0.000

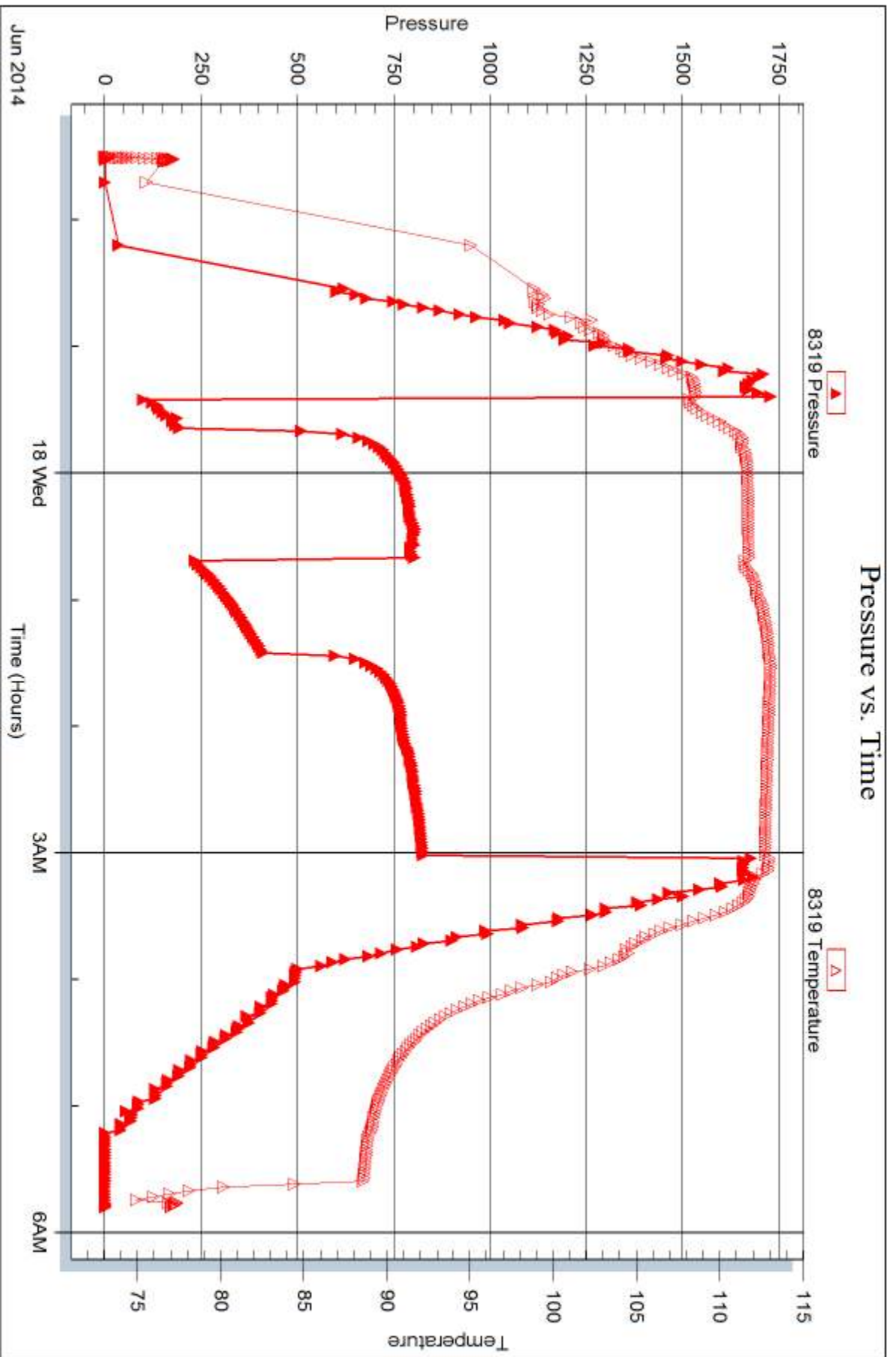
Total Length: 1096.00 ft Total Volume: 15.083 bbl

Num Fluid Samples: 0 Num Gas Bombs: 0 Serial #:

Laboratory Name: Laboratory Location:

Recovery Comments: R.W. = .14 OHMS @ 75.8 DEG.







DRILL STEM TEST REPORT

Prepared For: **Damar Resources**

234 West 11 Street Suite A
Hays KS. 67601

ATTN: Jim Muscgrove

Romme #2

22-13s-17w Ellis,KS

Start Date: 2014.06.18 @ 12:00:00

End Date: 2014.06.18 @ 19:02:30

Job Ticket #: 55294 DST #: 3

Trilobite Testing, Inc
PO Box 362 Hays, KS 67601
ph: 785-625-4778 fax: 785-625-5620

Printed: 2014.06.19 @ 16:42:50



TRILOBITE TESTING, INC

DRILL STEM TEST REPORT

Damar Resources
 234 West 11 Street Suite A
 Hays KS. 67601
 ATTN: Jim Muscgrove

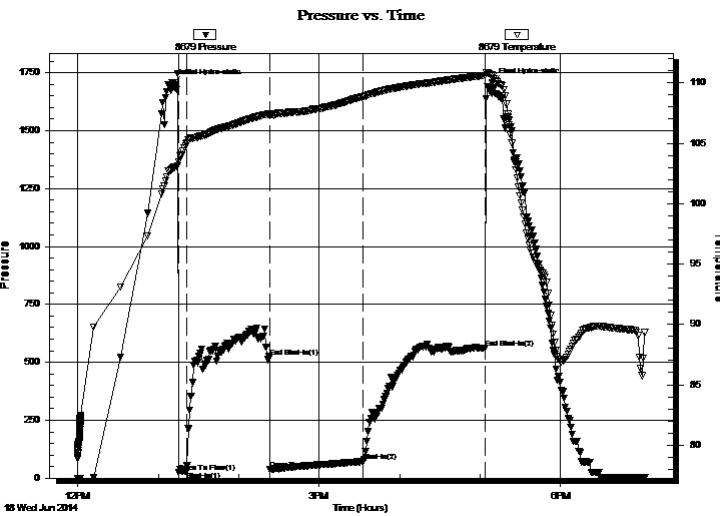
22-13s-17w Ellis,KS
Romme #2
 Job Ticket: 55294 **DST#: 3**
 Test Start: 2014.06.18 @ 12:00:00

GENERAL INFORMATION:

Formation: **Arbuckle**
 Deviated: No Whipstock: ft (KB)
 Time Tool Opened: 13:15:30
 Time Test Ended: 19:02:30
 Interval: **3552.00 ft (KB) To 3563.00 ft (KB) (TVD)**
 Total Depth: 3563.00 ft (KB) (TVD)
 Hole Diameter: 7.88 inches Hole Condition: Fair
 Test Type: Conventional Bottom Hole (Reset)
 Tester: Bob Hamel
 Unit No: 67
 Reference Elevations: 1980.00 ft (KB)
 1972.00 ft (CF)
 KB to GR/CF: 8.00 ft

Serial #: 8679 Inside
 Press@RunDepth: 72.10 psig @ 3554.00 ft (KB) Capacity: 8000.00 psig
 Start Date: 2014.06.18 End Date: 2014.06.18 Last Calib.: 2014.06.18
 Start Time: 12:00:01 End Time: 19:02:30 Time On Btm: 2014.06.18 @ 13:11:00
 Time Off Btm: 2014.06.18 @ 17:09:00

TEST COMMENT: I.F. - 5 - Weak blow built to 1 1/2"
 I.S.I. - 60 - Weak surface blow started at 8 min built to 4 1/2"
 F.F. - 60 - BOB in 18 min
 F.S.I. - 90 - surface blow started at 7 min BOB in 75 min



PRESSURE SUMMARY

Time (Min.)	Pressure (psig)	Temp (deg F)	Annotation
0	1703.88	102.97	Initial Hydro-static
5	24.83	103.46	Open To Flow (1)
10	29.46	104.93	Shut-In(1)
72	521.75	107.47	End Shut-In(1)
73	38.03	107.30	Open To Flow (2)
142	72.10	108.85	Shut-In(2)
233	562.32	110.61	End Shut-In(2)
238	1706.66	110.64	Final Hydro-static

Recovery

Length (ft)	Description	Volume (bbl)
63.00	S,M,C,H,W,C,G,O 5%M 25%G 30%W 40%	0.59
63.00	S,M,C,G,W,O, 3%M 25%W 27%G 45%	0.88
141.00	CLEAN OIL 100%	1.98
0.00	491 G.I.P.	0.00

* Recovery from multiple tests

Gas Rates

Choke (inches)	Pressure (psig)	Gas Rate (Mcf/d)



**TRILOBITE
TESTING, INC**

DRILL STEM TEST REPORT

TOOL DIAGRAM

Damar Resources
234 West 11 Street Suite A
Hays KS. 67601
ATTN: Jim Muscgrove

22-13s-17w Ellis,KS
Romme #2
Job Ticket: 55294 **DST#: 3**
Test Start: 2014.06.18 @ 12:00:00

Tool Information

Drill Pipe:	Length: 3517.00 ft	Diameter: 3.80 inches	Volume: 49.33 bbl	Tool Weight:	2000.00 lb
Heavy Wt. Pipe:	Length: 0.00 ft	Diameter: 2.70 inches	Volume: 0.00 bbl	Weight set on Packer:	30000.00 lb
Drill Collar:	Length: 32.00 ft	Diameter: 2.25 inches	Volume: 0.16 bbl	Weight to Pull Loose:	65000.00 lb
			<u>Total Volume: 49.49 bbl</u>	Tool Chased	0.00 ft
Drill Pipe Above KB:	17.00 ft			String Weight: Initial	53000.00 lb
Depth to Top Packer:	3552.00 ft			Final	54000.00 lb
Depth to Bottom Packer:	ft				
Interval between Packers:	11.00 ft				
Tool Length:	31.00 ft				
Number of Packers:	2	Diameter: 6.75 inches			

Tool Comments:

Tool Description

Length (ft) Serial No. Position Depth (ft) Accum. Lengths

Tool Description	Length (ft)	Serial No.	Position	Depth (ft)	Accum. Lengths
Change Over Sub	1.00			3533.00	
Shut In Tool	5.00			3538.00	
Hydraulic tool	5.00			3543.00	
Packer	4.00			3547.00	20.00 Bottom Of Top Packer
Packer	5.00			3552.00	
Stubb	1.00			3553.00	
Perforations	1.00			3554.00	
Recorder	0.00	6625	Outside	3554.00	
Recorder	0.00	8679	Inside	3554.00	
Perforations	5.00			3559.00	
Bullnose	4.00			3563.00	11.00 Bottom Packers & Anchor

Total Tool Length: 31.00



**TRILOBITE
TESTING, INC**

DRILL STEM TEST REPORT

FLUID SUMMARY

Damar Resources
234 West 11 Street Suite A
Hays KS. 67601
ATTN: Jim Muscgrove

22-13s-17w Ellis,KS
Romme #2
Job Ticket: 55294 **DST#: 3**
Test Start: 2014.06.18 @ 12:00:00

Mud and Cushion Information

Mud Type: Gel Chem	Cushion Type:	Oil API: 30 deg API
Mud Weight: 9.00 lb/gal	Cushion Length: ft	Water Salinity: ppm
Viscosity: 48.00 sec/qt	Cushion Volume: bbl	
Water Loss: 7.99 in ³	Gas Cushion Type:	
Resistivity: 0.00 ohm.m	Gas Cushion Pressure: psig	
Salinity: 5500.00 ppm		
Filter Cake: 1.00 inches		

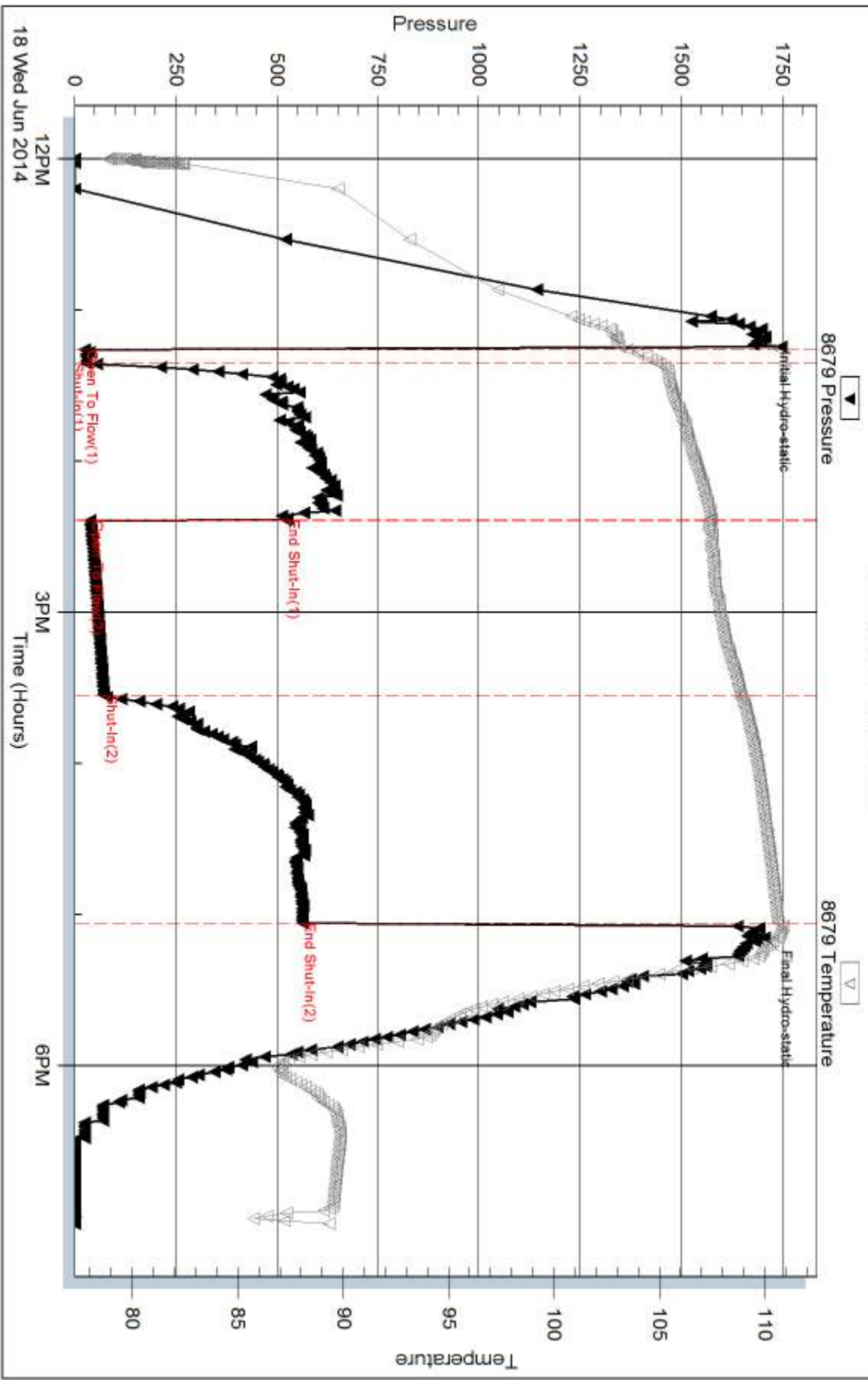
Recovery Information

Recovery Table

Length ft	Description	Volume bbl
63.00	S,M,C,H,W,C,G,O 5%M 25%G 30%W 40%O	0.592
63.00	S,M,C,G,W,O, 3%M 25%W 27%G 45%O	0.884
141.00	CLEAN OIL 100%	1.978
0.00	491 G.I.P.	0.000

Total Length: 267.00 ft Total Volume: 3.454 bbl
 Num Fluid Samples: 0 Num Gas Bombs: 0 Serial #:
 Laboratory Name: Laboratory Location:
 Recovery Comments: OIL GRAVITY = 30.2 A.P.I. @ 60 DEG.

Pressure vs. Time



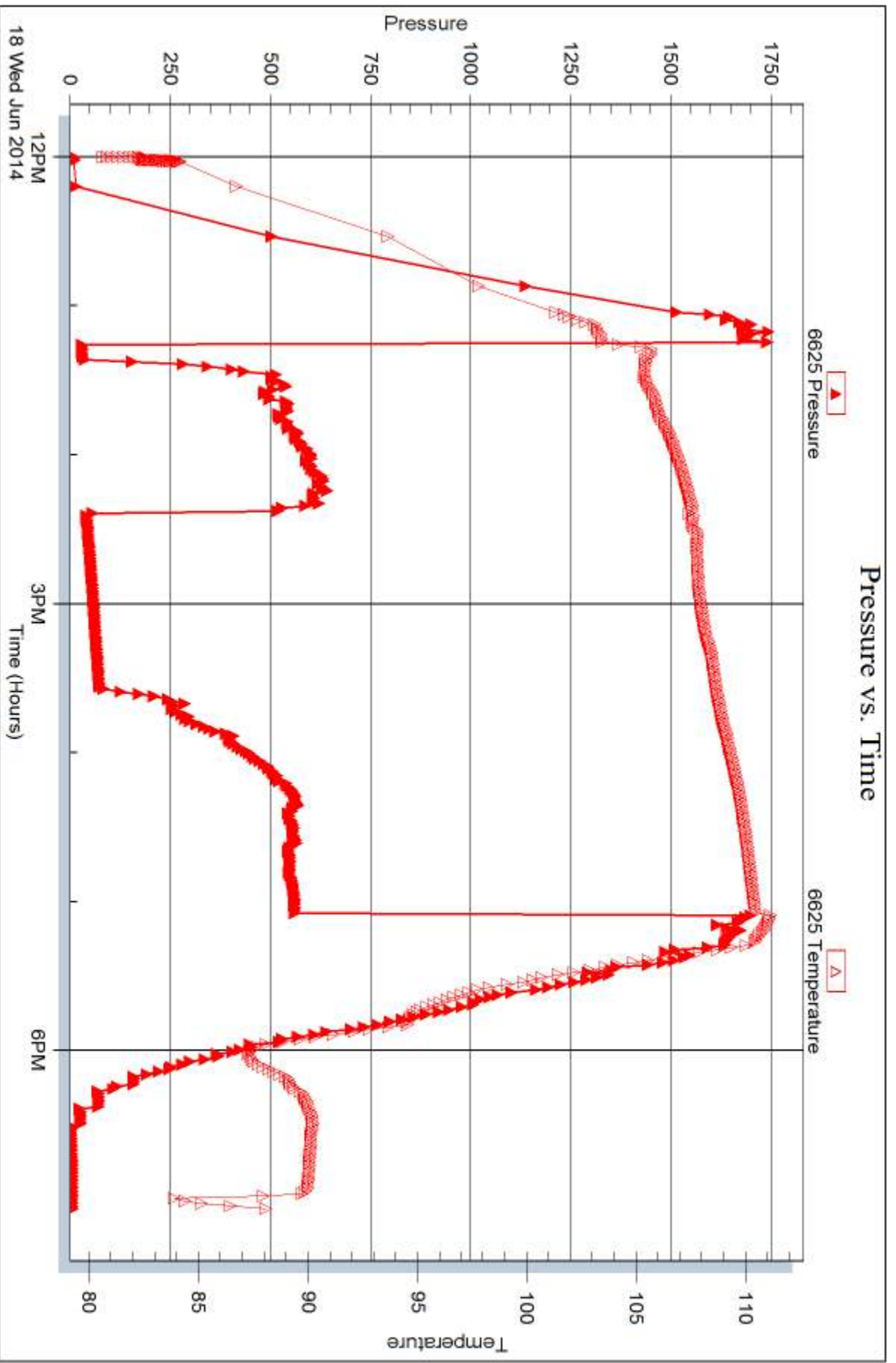
18 Wed Jun 2014

Serial #: 6625

Outside Damar Resources

Romme #2

DST Test Number: 3



Trilobite Testing, Inc

Ref. No: 55294

Printed: 2014.06.19 @ 16:42:51



TRILOBITE TESTING INC.

1515 Commerce Parkway • Hays, Kansas 67601

Test Ticket

NO. 55292

4/10

Well Name & No. Romme #2 Test No. 1 Date 6/16/14
 Company Damar Resources Elevation 1980 KB 1972 GL
 Address 234 west 11th Suite "A" Hays KS. 67601
 Co. Rep / Geo. Jim Musgrove Rig Discovery #3
 Location: Sec. 22 Twp. 13-S Rge. 17-W Co. Ellis State KS.

Interval Tested 3240-3400 Zone Tested Toronto-G
 Anchor Length 160' Drill Pipe Run 3204 Mud Wt. 9
 Top Packer Depth 3235 Drill Collars Run 32' Vis 51
 Bottom Packer Depth 3290 Wt. Pipe Run — WL 8.8
 Total Depth 3400 Chlorides 3,000 ppm System LCM 2

Blow Description I.F.-5-1/2 INT. Blow Built to (2" in 5min.)
I.S.I-60-No B.B.
F.F-60-w.S.B started @ 9min. & Built to (in 60min.)
F.S.I-90-No B.B.

Rec	Feet of	%gas	%oil	%water	%mud
Rec <u>62'</u>	Feet of <u>S, S.M (Few oil specs)</u>	%gas	<u>1</u> %oil	%water	<u>99</u> %mud
Rec	Feet of	%gas	%oil	%water	%mud
Rec	Feet of	%gas	%oil	%water	%mud
Rec	Feet of	%gas	%oil	%water	%mud

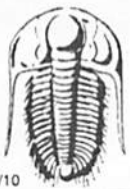
Rec Total _____ BHT _____ Gravity _____ API RW _____ @ _____ °F Chlorides _____ ppm

(A) Initial Hydrostatic 1,613 Test 1150 T-On Location 22:00:00
 (B) First Initial Flow 89 Jars _____ T-Started 22:20:00
 (C) First Final Flow 94 Safety Joint _____ T-Open 01:37:00
 (D) Initial Shut-In 818 Circ Sub _____ T-Pulled 05:12:00
 (E) Second Initial Flow 95 Hourly Standby _____ T-Out 06:31:00
 (F) Second Final Flow 95 Mileage 121 R.T. 18.60 Comments _____
 (G) Final Shut-In 744 Sampler _____ "thank you"
 (H) Final Hydrostatic 1,560 Straddle _____ Ruined Shale Packer _____
 Shale Packer _____ Ruined Packer _____

Initial Open S Extra Packer _____ Extra Copies _____
 Initial Shut-In 60 Extra Recorder _____ Sub Total 0
 Final Flow 60 Day Standby _____ Total 1168.60
 Final Shut-In 90 Accessibility _____ MP/DST Disc't _____
 Sub Total 1168.60

Approved By _____ Our Representative Bob Hamer

Trilobite Testing Inc. shall not be liable for damaged of any kind of the property or personnel of the one for whom a test is made, or for any loss suffered or sustained, directly or indirectly, through the use of its equipment, or its statements or opinion concerning the results of any test, tools lost or damaged in the hole shall be paid for at cost by the party for whom the test is made.



TRILOBITE TESTING INC.

1515 Commerce Parkway • Hays, Kansas 67601

Test Ticket

NO. 55293

Well Name & No. Romme #2 Test No. 2 Date 6/17/14
 Company Damar Resources Elevation 1980 KB 1972 GL
 Address 234 West 11th Suite A Hays KS. 67601
 Co. Rep / Geo. Jim Musgrove Rig Discovery Rig #3
 Location: Sec. 22 Twp. 13-S Rge. 17-W Co. Ellis State KS

Interval Tested 3552-3508 Zone Tested AR Buckle
 Anchor Length 44' Drill Pipe Run 3486 Mud Wt. 9.2
 Top Packer Depth 3503 Drill Collars Run 32' Vis 52
 Bottom Packer Depth 3508 Wt. Pipe Run — WL 8
 Total Depth 3552 Chlorides 4,500 ppm System LCM 2

Blow Description I.F.-15-1/2" INT. Blow Built to (B.O.B. in 2 Min.)
L.S.I.-60-W.S.B.B. started @ 8 min. Built to (B.O.B. in 45 Min.)
F.F.-45-B.O.B. INSTANT
F.S.I.-90-INT. Blow Started @ 5 min. Built to (B.O.B. in 15 min.)

Rec	Feet of	%gas	%oil	%water	%mud
<u>1.071</u>	<u>GTP 189'</u>				
<u>25'</u>	<u>S, M, C, G, W, D</u>	<u>20</u>	<u>95</u>	<u>30</u>	<u>5</u>
	<u>S, O, S, W,</u>		<u>stuck</u>	<u>100</u>	
Rec Total	<u>1,096'</u> BHT <u>114</u>	Gravity	API RW <u>.14</u> @ <u>75.8°</u> F	Chlorides <u>49,000</u> ppm	

(A) Initial Hydrostatic 1726 Test 1150 T-On Location 20:45:00
 (B) First Initial Flow 100 Jars _____ T-Started 21:30:00
 (C) First Final Flow 200 Safety Joint _____ T-Open 23:25:00
 (D) Initial Shut-In 796 Circ Sub _____ T-Pulled 02:58:00
 (E) Second Initial Flow 237 Hourly Standby _____ T-Out 05:53:00
 (F) Second Final Flow 404 Mileage 1210.1 18.60 Comments _____
 (G) Final Shut-In 819 Sampler _____ Thank you
 (H) Final Hydrostatic 1,658 Straddle _____ Ruined Shale Packer _____
 Shale Packer _____ Ruined Packer _____
 Extra Packer _____ Extra Copies _____
 Extra Recorder _____ Sub Total 0
 Day Standby _____ Total 1168.60
 Accessibility _____ MP/DST Disc't _____

Initial Open 15
 Initial Shut-In 60
 Final Flow 45
 Final Shut-In 90
 Sub Total 1168.60

Approved By _____ Our Representative [Signature]

Trilobite Testing Inc. shall not be liable for damaged of any kind of the property or personnel of the one for whom a test is made, or for any loss suffered or sustained, directly or indirectly, through the use of its equipment, or its statements or opinion concerning the results of any test, tools lost or damaged in the hole shall be paid for at cost by the party for whom the test is made.



TRILOBITE TESTING INC.

1515 Commerce Parkway • Hays, Kansas 67601

Test Ticket

NO. 55294

Well Name & No. Rompage #2 Test No. 3 Date 6/18/14
 Company Damar Resources Elevation 1980 KB 1972 GL
 Address 234 West 11th Suite A Hays KS. 67601
 Co. Rep / Geo. Jim Musgrove Rig Discovery #3
 Location: Sec. 22 Twp. 13-S. Rge. 17-W. Co. Ellis State Ks.

Interval Tested 3552-3563 Zone Tested ARBUCKLE
 Anchor Length 11 Drill Pipe Run 3517 Mud Wt. 9.1
 Top Packer Depth 3547 Drill Collars Run 32' Vis 48
 Bottom Packer Depth 3552 Wt. Pipe Run — WL 8
 Total Depth 3563 Chlorides 5,500 ppm System LCM 1

Blow Description I.F. - 5 - 1/2" INT. Blow Built to
I.S.I - 60 - w.s. B.B. Started @ 8 min. Built to (4 1/2 in 60 min.)
~~FF. - [REDACTED]~~ 60 - (B.O.B. in 18 min.)
F.S.I - 90 - w.s. B. Started @ 7 min. Built to (B.O.B. in 75 min.)

Rec	Feet of	%gas	%oil	%water	%mud
Rec <u>141</u>	Feet of <u>491 G.T.P</u>				
Rec <u>63</u>	Feet of <u>900, C/O</u>		<u>100</u>		
Rec <u>63</u>	Feet of <u>S, M, C, G, W, D</u>	<u>27</u>	<u>45</u>	<u>25</u>	<u>3</u>
Rec <u>63</u>	Feet of <u>S, M, C, H, W, C, G, D</u>	<u>25</u>	<u>40</u>	<u>30</u>	<u>5</u>
Rec	Feet of	%gas	%oil	%water	%mud

Rec Total 268 BHT 110 Gravity 30.2 API RW — @ — °F Chlorides — ppm

(A) Initial Hydrostatic 1709 Test 1150 T-On Location 11:45:00
 (B) First Initial Flow 25 Jars — T-Started 12:00:00
 (C) First Final Flow 30 Safety Joint — T-Open 13:33:00
 (D) Initial Shut-In 522 Circ Sub — T-Pulled 17:08:00
 (E) Second Initial Flow 38 Hourly Standby — T-Out 19:02:00
 (F) Second Final Flow 72 Mileage 121 R.T. 18.60 Comments —
 (G) Final Shut-In 562 Sampler — thank you
 (H) Final Hydrostatic 1707 Straddle — Ruined Shale Packer —

Initial Open 5 Shale Packer — Ruined Packer —
 Initial Shut-In 60 Extra Packer — Extra Copies —
 Final Flow 60 Extra Recorder — Sub Total 0
 Final Shut-In 90 Day Standby — Total 1168.60
 Accessibility — MP/DST Disc't —
 Sub Total 1168.60

Approved By _____ Our Representative [Signature]

Trilobite Testing Inc. shall not be liable for damaged of any kind of the property or personnel of the one for whom a test is made, or for any loss suffered or sustained, directly or indirectly, through the use of its equipment, or its statements or opinion concerning the results of any test, tools lost or damaged in the hole shall be paid for at cost by the party for whom the test is made.

JOB LOG

SWIFT Services, Inc.

DATE 6-19-14 PAGE NO. 1

CUSTOMER *Hamar Res.* WELL NO. #2 LEASE *Romero* JOB TYPE *Long String* TICKET NO. *26702*

CHART NO.	TIME	RATE (BPM)	VOLUME (GAL)	PUMPS		PRESSURE (PSI)		DESCRIPTION OF OPERATION AND MATERIALS
				T	C	TUBING	CASING	
	1300							on Loc. Rig Laying Down Rat hole
	1345							Start in hole 5 1/2 15.5# Csg. Insert Float shoe Latch down Baffle Cent. #1, #4, #6, #8, #10, #12 Bucket #13 Total Pipe 3642.5 S.J. 24.5 T.D. = 3640'
	14:55							Drop Ball Cent. on Bottom
	15:15							Circulate & Rotate
	15:45							Plug R.H. 30sk M.H. 20sk
	15:55		12					Pump 500gal Mud Flush 20sk KCL Flush
	1606	5	30					Mix 125sk EA-2 Cement Finish mixing wash out pump & line
	16:15	6						Displ. latch down Plug
	1630		86				1500	Plug down 1500psi holding Release Press. Hold wash & rack up tool
	1700							Job Complete

Thank You
Roger Josh Rob

QUALITY OILWELL CEMENTING, INC.

Federal Tax I.D.# 20-2886107

Phone 785-483-2025
Cell 785-324-1041

Home Office P.O. Box 32 Russell, KS 67665

No. 243

Date 6-13-14	Sec. 22	Twp. 13	Range 17	County Ellis	State KS	On Location	Finish 3:30pm
---------------------	----------------	----------------	-----------------	---------------------	-----------------	-------------	----------------------

Location **Toulon & I-70, 1 1/2 N to Vineyard Rd, 2 1/4 E,**

Lease Romme	Well No. 2	Owner Nn2
Contractor Discovery #3	To Quality Oilwell Cementing, Inc. You are hereby requested to rent cementing equipment and furnish cementer and helper to assist owner or contractor to do work as listed.	
Type Job Surface	Charge To Damar Resources	
Hole Size 12 1/4	T.D. 1215	Street
Csg. 8 5/8	Depth 1215	City
Tbg. Size	Depth	State
Tool	Depth	The above was done to satisfaction and supervision of owner agent or contractor.
Cement Left in Csg.	Shoe Joint 22.05	Cement Amount Ordered 450sx com, 3% cc, 2% gel
Meas Line	Displace 75 3/4 bbl	

EQUIPMENT

Pumptrk 17	No.	Cementer Helper Lonnie W.	Common 450
Bulktrk 4	No.	Driver Lonnie M.	Poz. Mix
Bulktrk Ph	No.	Driver Travis	Gel. 9
			Calcium 16

JOB SERVICES & REMARKS

Remarks: cement did circulate	Hulls
Rat Hole	Salt
Mouse Hole	Flowseal
Centralizers 1, 7, 24	Kol-Seal
Baskets	Mud CLR 48
D/V or Port Collar	CFL-117 or CD110 CAF 38
	Sand
	Handling 475
	Mileage

FLOAT EQUIPMENT

	Guide Shoe
	Centralizer 3
	Baskets
	AFU Inserts
	Float Shoe
	Latch Down
	1 Baffle plat
	1 Rubber Plug
	Pumptrk Charge Long Surface
	Mileage 28

	Tax
	Discount
X Signature John Walker	Total Charge