



Confidentiality Requested:

Yes No

KANSAS CORPORATION COMMISSION 1225716
OIL & GAS CONSERVATION DIVISION

Form ACO-1

August 2013

Form must be Typed
Form must be Signed
All blanks must be Filled

WELL COMPLETION FORM
WELL HISTORY - DESCRIPTION OF WELL & LEASE

OPERATOR: License # _____

Name: _____

Address 1: _____

Address 2: _____

City: _____ State: _____ Zip: _____ + _____

Contact Person: _____

Phone: (_____) _____

CONTRACTOR: License # _____

Name: _____

Wellsite Geologist: _____

Purchaser: _____

Designate Type of Completion:

- New Well Re-Entry Workover
- Oil WSW SWD SIOW
- Gas D&A ENHR SIGW
- OG GSW Temp. Abd.
- CM (Coal Bed Methane)
- Cathodic Other (Core, Expl., etc.): _____

If Workover/Re-entry: Old Well Info as follows:

Operator: _____

Well Name: _____

Original Comp. Date: _____ Original Total Depth: _____

- Deepening Re-perf. Conv. to ENHR Conv. to SWD
- Plug Back Conv. to GSW Conv. to Producer
- Commingled Permit #: _____
- Dual Completion Permit #: _____
- SWD Permit #: _____
- ENHR Permit #: _____
- GSW Permit #: _____

| | | |
|-----------------------------------|-----------------|---|
| Spud Date or Recompletion Date | Date Reached TD | Completion Date or Recompletion Date |
|-----------------------------------|-----------------|---|

API No. 15 - _____

Spot Description: _____

_____ - _____ - _____ Sec. _____ Twp. _____ S. R. _____ East West

_____ Feet from North / South Line of Section

_____ Feet from East / West Line of Section

Footages Calculated from Nearest Outside Section Corner:

- NE NW SE SW

GPS Location: Lat: _____, Long: _____
(e.g. xx.xxxxx) (e.g. -xxx.xxxxx)

Datum: NAD27 NAD83 WGS84

County: _____

Lease Name: _____ Well #: _____

Field Name: _____

Producing Formation: _____

Elevation: Ground: _____ Kelly Bushing: _____

Total Vertical Depth: _____ Plug Back Total Depth: _____

Amount of Surface Pipe Set and Cemented at: _____ Feet

Multiple Stage Cementing Collar Used? Yes No

If yes, show depth set: _____ Feet

If Alternate II completion, cement circulated from: _____

feet depth to: _____ w/ _____ sx cmt.

Drilling Fluid Management Plan

(Data must be collected from the Reserve Pit)

Chloride content: _____ ppm Fluid volume: _____ bbls

Dewatering method used: _____

Location of fluid disposal if hauled offsite:

Operator Name: _____

Lease Name: _____ License #: _____

Quarter _____ Sec. _____ Twp. _____ S. R. _____ East West

County: _____ Permit #: _____

AFFIDAVIT

I am the affiant and I hereby certify that all requirements of the statutes, rules and regulations promulgated to regulate the oil and gas industry have been fully complied with and the statements herein are complete and correct to the best of my knowledge.

Submitted Electronically

KCC Office Use ONLY

- Confidentiality Requested
Date: _____
- Confidential Release Date: _____
- Wireline Log Received
- Geologist Report Received
- UIC Distribution
- ALT I II III Approved by: _____ Date: _____

1225716

Operator Name: _____ Lease Name: _____ Well #: _____

Sec. _____ Twp. _____ S. R. _____ East West County: _____

INSTRUCTIONS: Show important tops of formations penetrated. Detail all cores. Report all final copies of drill stems tests giving interval tested, time tool open and closed, flowing and shut-in pressures, whether shut-in pressure reached static level, hydrostatic pressures, bottom hole temperature, fluid recovery, and flow rates if gas to surface test, along with final chart(s). Attach extra sheet if more space is needed.

Final Radioactivity Log, Final Logs run to obtain Geophysical Data and Final Electric Logs must be emailed to kcc-well-logs@kcc.ks.gov. Digital electronic log files must be submitted in LAS version 2.0 or newer AND an image file (TIFF or PDF).

Drill Stem Tests Taken Yes No
(Attach Additional Sheets)
Samples Sent to Geological Survey Yes No
Cores Taken Yes No
Electric Log Run Yes No

Log Formation (Top), Depth and Datum Sample
Name Top Datum

List All E. Logs Run:

| CASING RECORD <input type="checkbox"/> New <input type="checkbox"/> Used | | | | | | | |
|---|-------------------|---------------------------|-------------------|---------------|----------------|--------------|----------------------------|
| Report all strings set-conductor, surface, intermediate, production, etc. | | | | | | | |
| Purpose of String | Size Hole Drilled | Size Casing Set (In O.D.) | Weight Lbs. / Ft. | Setting Depth | Type of Cement | # Sacks Used | Type and Percent Additives |
| | | | | | | | |
| | | | | | | | |
| | | | | | | | |

| ADDITIONAL CEMENTING / SQUEEZE RECORD | | | | |
|---|------------------|----------------|--------------|----------------------------|
| Purpose: | Depth Top Bottom | Type of Cement | # Sacks Used | Type and Percent Additives |
| <input type="checkbox"/> Perforate | | | | |
| <input type="checkbox"/> Protect Casing | | | | |
| <input type="checkbox"/> Plug Back TD | | | | |
| <input type="checkbox"/> Plug Off Zone | | | | |

Did you perform a hydraulic fracturing treatment on this well? Yes No (If No, skip questions 2 and 3)
Does the volume of the total base fluid of the hydraulic fracturing treatment exceed 350,000 gallons? Yes No (If No, skip question 3)
Was the hydraulic fracturing treatment information submitted to the chemical disclosure registry? Yes No (If No, fill out Page Three of the ACO-1)

| Shots Per Foot | PERFORATION RECORD - Bridge Plugs Set/Type Specify Footage of Each Interval Perforated | Acid, Fracture, Shot, Cement Squeeze Record (Amount and Kind of Material Used) | Depth |
|----------------|---|---|-------|
| | | | |
| | | | |
| | | | |
| | | | |
| | | | |

TUBING RECORD: Size: _____ Set At: _____ Packer At: _____ Liner Run: Yes No

Date of First, Resumed Production, SWD or ENHR. _____ Producing Method:
 Flowing Pumping Gas Lift Other (Explain) _____

| Estimated Production Per 24 Hours | Oil Bbls. | Gas Mcf | Water Bbls. | Gas-Oil Ratio | Gravity |
|-----------------------------------|-----------|---------|-------------|---------------|---------|
| | | | | | |

| DISPOSITION OF GAS: | METHOD OF COMPLETION: | PRODUCTION INTERVAL: |
|---|---|---|
| <input type="checkbox"/> Vented <input type="checkbox"/> Sold <input type="checkbox"/> Used on Lease (If vented, Submit ACO-18.) | <input type="checkbox"/> Open Hole <input type="checkbox"/> Perf. <input type="checkbox"/> Dually Comp. <input type="checkbox"/> Commingled (Submit ACO-5) <input type="checkbox"/> Other (Specify) _____ | <input type="checkbox"/> Commingled (Submit ACO-4) |



DRILL STEM TEST REPORT

Prepared For: **American Warrior, Inc**

PO Box 399
Garden City, KS 67846

ATTN: Jim Musgrove

Tempero #8-23

23-17s-14w Barton,KS

Start Date: 2014.08.17 @ 18:35:00

End Date: 2014.08.18 @ 02:07:00

Job Ticket #: 58733 DST #: 1

Trilobite Testing, Inc
1515 Commerce Parkway Hays, KS 67601
ph: 785-625-4778 fax: 785-625-5620

Printed: 2014.08.21 @ 14:38:24



**TRILOBITE
TESTING, INC**

DRILL STEM TEST REPORT

American Warrior, Inc
 PO Box 399
 Garden City, KS 67846
 ATTN: Jim Musgrove

23-17s-14w Barton,KS

Temporo #8-23

Job Ticket: 58733

DST#: 1

Test Start: 2014.08.17 @ 18:35:00

GENERAL INFORMATION:

Formation: **LKC "D-G"**
 Deviated: No Whipstock: ft (KB)
 Time Tool Opened: 21:45:30
 Time Test Ended: 02:07:00
 Interval: **3194.00 ft (KB) To 3239.00 ft (KB) (TVD)**
 Total Depth: 3239.00 ft (KB) (TVD)
 Hole Diameter: 7.88 inches Hole Condition: Fair
 Test Type: Conventional Bottom Hole (Initial)
 Tester: Phillip Gage
 Unit No: 62
 Reference Elevations: 1913.00 ft (KB)
 1905.00 ft (CF)
 KB to GR/CF: 8.00 ft

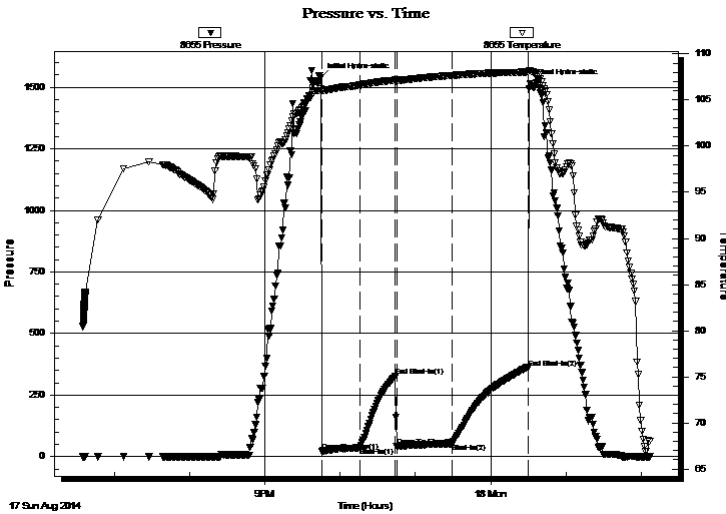
Serial #: 8655

Outside

Press@RunDepth: 54.31 psig @ 3195.00 ft (KB)
 Start Date: 2014.08.17 End Date: 2014.08.18
 Start Time: 18:35:01 End Time: 02:07:00
 Capacity: 8000.00 psig
 Last Calib.: 2014.08.18
 Time On Btm: 2014.08.17 @ 21:44:30
 Time Off Btm: 2014.08.18 @ 00:31:30

TEST COMMENT: 30-IF-BOB in 24 mins
 30-ISI-No Return
 45-FF-Built to 9"
 60-FSI-Weak Surface Return at 5 mins, died in 2 mins.

PRESSURE SUMMARY



| Time (Min.) | Pressure (psig) | Temp (deg F) | Annotation |
|-------------|-----------------|--------------|----------------------|
| 0 | 1538.16 | 106.25 | Initial Hydro-static |
| 1 | 20.41 | 106.02 | Open To Flow (1) |
| 31 | 36.23 | 106.61 | Shut-In(1) |
| 60 | 326.47 | 107.16 | End Shut-In(1) |
| 61 | 41.25 | 107.11 | Open To Flow (2) |
| 105 | 54.31 | 107.67 | Shut-In(2) |
| 165 | 361.00 | 108.04 | End Shut-In(2) |
| 167 | 1515.67 | 108.18 | Final Hydro-static |

Recovery

| Length (ft) | Description | Volume (bbl) |
|-------------|----------------------------------|--------------|
| 0.00 | GIP-126', 100%g | 0.00 |
| 20.00 | SOCM, 10%o, 90%m | 0.28 |
| 63.00 | WCM, 40%w, 60%m, w ith oil spots | 0.88 |
| | | |
| | | |

Gas Rates

| | Choke (inches) | Pressure (psig) | Gas Rate (Mcf/d) |
|--|----------------|-----------------|------------------|
| | | | |



**TRILOBITE
TESTING, INC**

DRILL STEM TEST REPORT

American Warrior, Inc
 PO Box 399
 Garden City, KS 67846
 ATTN: Jim Musgrove

23-17s-14w Barton,KS

Temporo #8-23

Job Ticket: 58733 **DST#: 1**
 Test Start: 2014.08.17 @ 18:35:00

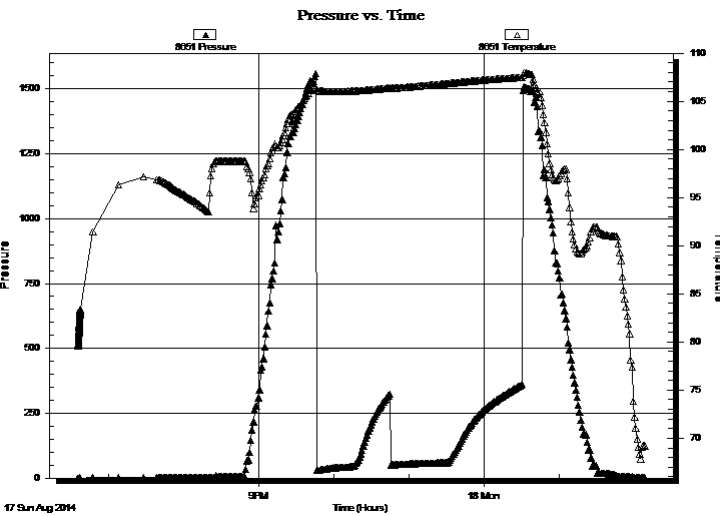
GENERAL INFORMATION:

| | |
|---|--|
| Formation: LKC "D-G" | Test Type: Conventional Bottom Hole (Initial) |
| Deviated: No Whipstock: ft (KB) | Tester: Phillip Gage |
| Time Tool Opened: 21:45:30 | Unit No: 62 |
| Time Test Ended: 02:07:00 | |
| Interval: 3194.00 ft (KB) To 3239.00 ft (KB) (TVD) | Reference Elevations: 1913.00 ft (KB) |
| Total Depth: 3239.00 ft (KB) (TVD) | 1905.00 ft (CF) |
| Hole Diameter: 7.88 inches | Hole Condition: Fair |
| | KB to GR/CF: 8.00 ft |

Serial #: 8651 Inside

| | |
|---|--------------------------------|
| Press@RunDepth: psig @ 3195.00 ft (KB) | Capacity: 8000.00 psig |
| Start Date: 2014.08.17 | End Date: 2014.08.18 |
| Start Time: 18:35:01 | End Time: 02:08:30 |
| | Last Calib.: 2014.08.18 |
| | Time On Btm: |
| | Time Off Btm: |

TEST COMMENT: 30-IF-BOB in 24 mins
 30-ISI-No Return
 45-FF-Built to 9"
 60-FSI-Weak Surface Return at 5 mins, died in 2 mins.



17 Sun Aug 2014

PRESSURE SUMMARY

| Time (Min.) | Pressure (psig) | Temp (deg F) | Annotation |
|-------------|-----------------|--------------|------------|
| | | | |
| | | | |
| | | | |
| | | | |
| | | | |
| | | | |
| | | | |
| | | | |
| | | | |

Recovery

| Length (ft) | Description | Volume (bbl) |
|-------------|-----------------------------------|--------------|
| 0.00 | GIP-126', 100%g | 0.00 |
| 20.00 | SOCM, 10%o, 90%m | 0.28 |
| 63.00 | WCM, 40%w , 60%m, w ith oil spots | 0.88 |
| | | |
| | | |
| | | |
| | | |

Gas Rates

| Choke (inches) | Pressure (psig) | Gas Rate (Mcf/d) |
|----------------|-----------------|------------------|
| | | |



**TRILOBITE
TESTING, INC**

DRILL STEM TEST REPORT

TOOL DIAGRAM

American Warrior, Inc
PO Box 399
Garden City, KS 67846
ATTN: Jim Musgrove

23-17s-14w Barton,KS
Tempero #8-23
Job Ticket: 58733 **DST#: 1**
Test Start: 2014.08.17 @ 18:35:00

Tool Information

| | | | | | |
|---------------------------|--------------------|-----------------------|--------------------------------|------------------------|-------------|
| Drill Pipe: | Length: 3194.00 ft | Diameter: 3.80 inches | Volume: 44.80 bbl | Tool Weight: | 2000.00 lb |
| Heavy Wt. Pipe: | Length: 0.00 ft | Diameter: 2.75 inches | Volume: 0.00 bbl | Weight set on Packer: | 25000.00 lb |
| Drill Collar: | Length: 0.00 ft | Diameter: 2.25 inches | Volume: 0.00 bbl | Weight to Pull Loose: | 65000.00 lb |
| | | | <u>Total Volume: 44.80 bbl</u> | Tool Chased | 0.00 ft |
| Drill Pipe Above KB: | 20.00 ft | | | String Weight: Initial | 42000.00 lb |
| Depth to Top Packer: | 3194.00 ft | | | Final | 42000.00 lb |
| Depth to Bottom Packer: | ft | | | | |
| Interval between Packers: | 45.00 ft | | | | |
| Tool Length: | 65.00 ft | | | | |
| Number of Packers: | 2 | Diameter: 6.75 inches | | | |

Tool Comments:

| Tool Description | Length (ft) | Serial No. | Position | Depth (ft) | Accum. Lengths |
|-------------------------|--------------------|-------------------|-----------------|-------------------|-----------------------|
|-------------------------|--------------------|-------------------|-----------------|-------------------|-----------------------|

| | | | | | |
|-----------------|-------|------|---------|---------|------------------------------------|
| Change Over Sub | 1.00 | | | 3175.00 | |
| Shut In Tool | 5.00 | | | 3180.00 | |
| Hydraulic tool | 5.00 | | | 3185.00 | |
| Packer | 5.00 | | | 3190.00 | 20.00 Bottom Of Top Packer |
| Packer | 4.00 | | | 3194.00 | |
| Stubb | 1.00 | | | 3195.00 | |
| Recorder | 0.00 | 8651 | Inside | 3195.00 | |
| Recorder | 0.00 | 8655 | Outside | 3195.00 | |
| Perforations | 8.00 | | | 3203.00 | |
| Change Over Sub | 1.00 | | | 3204.00 | |
| Drill Pipe | 31.00 | | | 3235.00 | |
| Change Over Sub | 1.00 | | | 3236.00 | |
| Bullnose | 3.00 | | | 3239.00 | 45.00 Bottom Packers & Anchor |

Total Tool Length: 65.00



**TRILOBITE
TESTING, INC**

DRILL STEM TEST REPORT

FLUID SUMMARY

American Warrior, Inc
 PO Box 399
 Garden City, KS 67846
 ATTN: Jim Musgrove

23-17s-14w Barton,KS
Tempero #8-23
 Job Ticket: 58733 **DST#: 1**
 Test Start: 2014.08.17 @ 18:35:00

Mud and Cushion Information

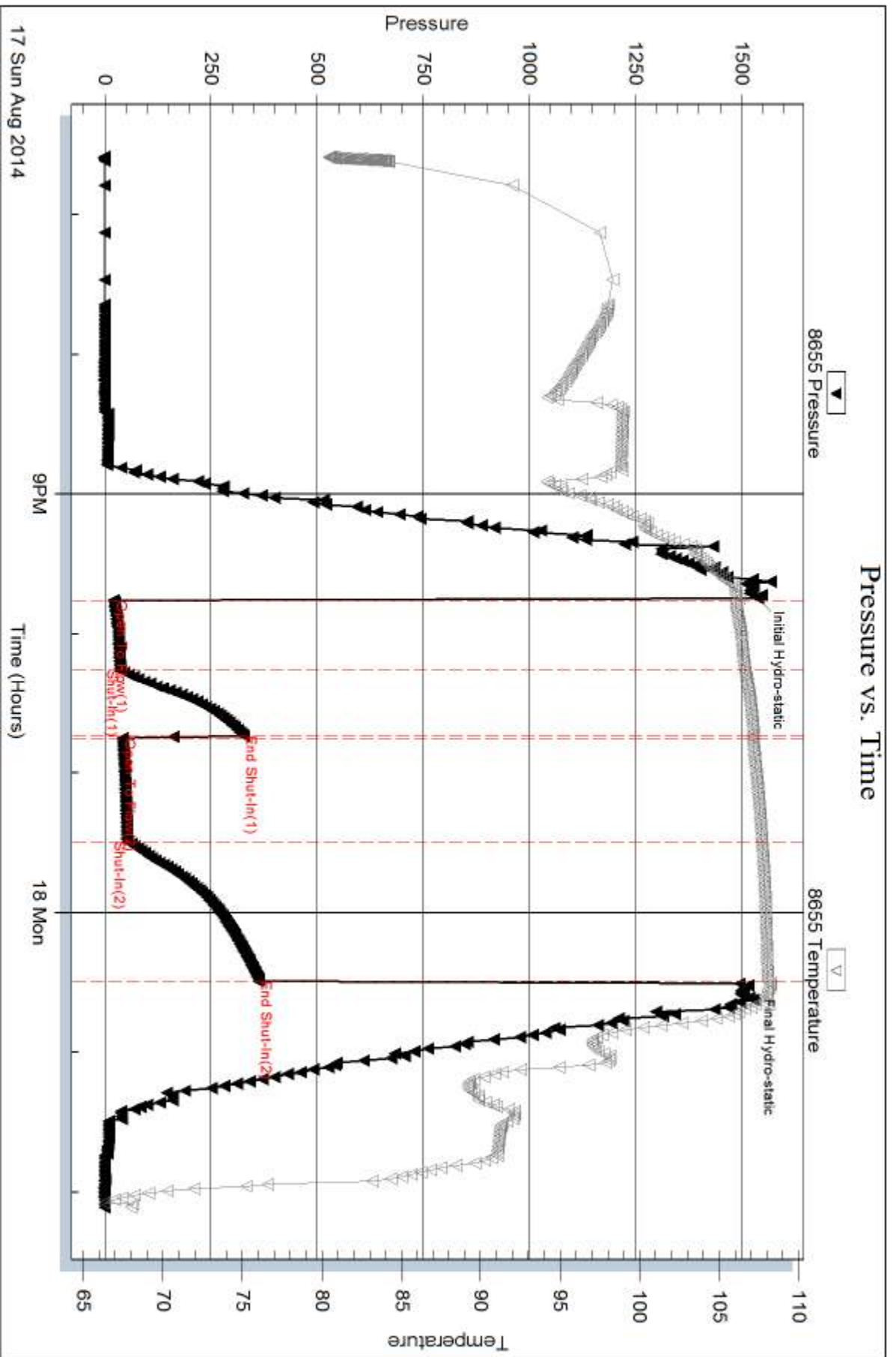
| | | | |
|----------------------------------|----------------------------|-----------------|-----------|
| Mud Type: Gel Chem | Cushion Type: | Oil API: | deg API |
| Mud Weight: 9.00 lb/gal | Cushion Length: ft | Water Salinity: | 24000 ppm |
| Viscosity: 49.00 sec/qt | Cushion Volume: bbl | | |
| Water Loss: 7.58 in ³ | Gas Cushion Type: | | |
| Resistivity: ohm.m | Gas Cushion Pressure: psig | | |
| Salinity: 3100.00 ppm | | | |
| Filter Cake: inches | | | |

Recovery Information

Recovery Table

| Length ft | Description | Volume bbl |
|--------------|-----------------------------------|---------------|
| 0.00 | GIP-126', 100%g | 0.000 |
| 20.00 | SOCM, 10%o, 90%m | 0.281 |
| 63.00 | WCM, 40%w , 60%m, w ith oil spots | 0.884 |

Total Length: 83.00 ft Total Volume: 1.165 bbl
 Num Fluid Samples: 0 Num Gas Bombs: 0 Serial #:
 Laboratory Name: Laboratory Location:
 Recovery Comments: .141 @ 67 degrees = 24,000 Salinity



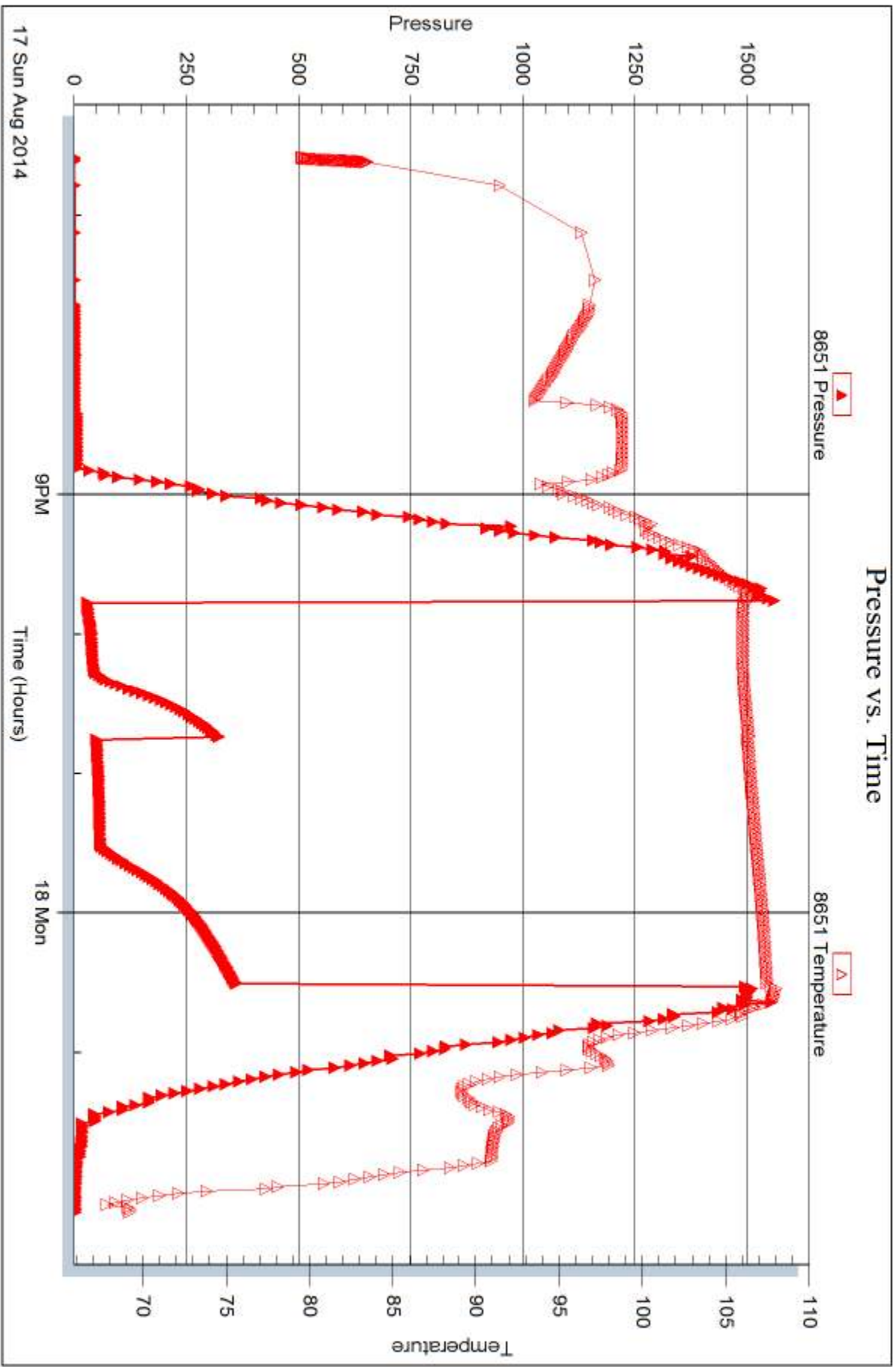
Serial #: 8651

Inside

American Warrior, Inc

Tempero #8-23

DST Test Number: 1



Tribble Testing, Inc

Ref. No: 58733

Printed: 2014.08.21 @ 14:38:26



DRILL STEM TEST REPORT

Prepared For: **American Warrior, Inc**

PO Box 399
Garden City, KS 67846

ATTN: Jim Musgrove

Tempero #8-23

23-17s-14w Barton,KS

Start Date: 2014.08.18 @ 09:13:00

End Date: 2014.08.18 @ 16:33:30

Job Ticket #: 58734 DST #: 2

Trilobite Testing, Inc
1515 Commerce Parkway Hays, KS 67601
ph: 785-625-4778 fax: 785-625-5620

Printed: 2014.08.21 @ 14:37:45



**TRILOBITE
TESTING, INC**

DRILL STEM TEST REPORT

American Warrior, Inc
 PO Box 399
 Garden City, KS 67846
 ATTN: Jim Musgrove

23-17s-14w Barton,KS

Temporo #8-23

Job Ticket: 58734 **DST#: 2**
 Test Start: 2014.08.18 @ 09:13:00

GENERAL INFORMATION:

Formation: **LKC "H"**
 Deviated: No Whipstock: ft (KB)
 Time Tool Opened: 11:17:00
 Time Test Ended: 16:33:30
 Interval: **3271.00 ft (KB) To 330.00 ft (KB) (TVD)**
 Total Depth: 3300.00 ft (KB) (TVD)
 Hole Diameter: 7.88 inches Hole Condition: Fair
 Test Type: Conventional Bottom Hole (Reset)
 Tester: Phillip Gage
 Unit No: 62
 Reference Elevations: 1913.00 ft (KB)
 1905.00 ft (CF)
 KB to GR/CF: 8.00 ft

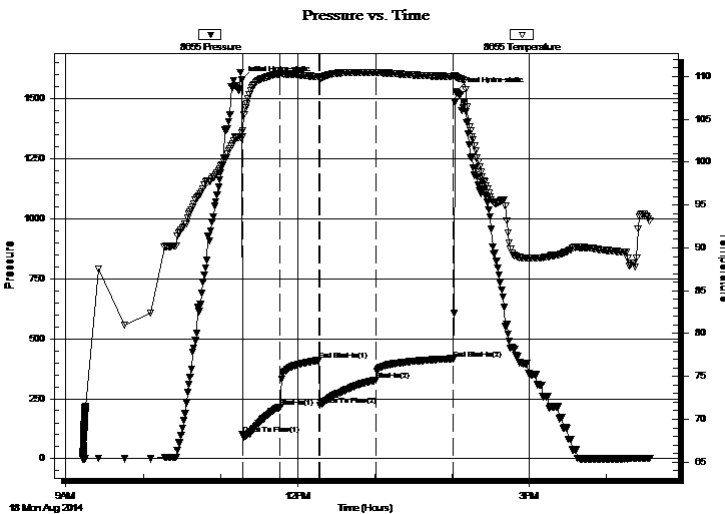
Serial #: 8655

Outside

Press@RunDepth: 328.65 psig @ 3272.00 ft (KB) Capacity: 8000.00 psig
 Start Date: 2014.08.18 End Date: 2014.08.18 Last Calib.: 2014.08.18
 Start Time: 09:13:01 End Time: 16:33:30 Time On Btm: 2014.08.18 @ 11:16:30
 Time Off Btm: 2014.08.18 @ 14:03:00

TEST COMMENT: 30-IF-BOB in 1 min.
 30-ISI-BOB Return in 3 mins.
 45-FF-BOB in 3 mins, gas to surface, unable to gauge.
 60-FSI-BOB Return in 5 mins.

PRESSURE SUMMARY



| Time (Min.) | Pressure (psig) | Temp (deg F) | Annotation |
|-------------|-----------------|--------------|----------------------|
| 0 | 1578.26 | 103.44 | Initial Hydro-static |
| 1 | 101.85 | 102.96 | Open To Flow (1) |
| 30 | 216.04 | 110.31 | Shut-In(1) |
| 60 | 410.01 | 109.97 | End Shut-In(1) |
| 61 | 222.76 | 109.71 | Open To Flow (2) |
| 105 | 328.65 | 110.46 | Shut-In(2) |
| 165 | 417.59 | 109.99 | End Shut-In(2) |
| 167 | 1530.79 | 109.96 | Final Hydro-static |

Recovery

| Length (ft) | Description | Volume (bbl) |
|-------------|-------------------------------|--------------|
| 0.00 | GIP-2331' 100%g | 0.00 |
| 330.00 | GCO, 30%g, 70%o | 4.63 |
| 252.00 | VSMOOG, 5%m, 45%o, 50%g | 3.53 |
| 126.00 | VSMWOCG, 5%m, 5%w, 40%o, 50%g | 1.77 |
| 126.00 | VSMCW, 5%m, 95%w | 1.77 |

* Recovery from multiple tests

Gas Rates

| | Choke (inches) | Pressure (psig) | Gas Rate (Mcf/d) |
|--|----------------|-----------------|------------------|
| | | | |



**TRILOBITE
TESTING, INC**

DRILL STEM TEST REPORT

TOOL DIAGRAM

American Warrior, Inc
PO Box 399
Garden City, KS 67846
ATTN: Jim Musgrove

23-17s-14w Barton,KS
Tempero #8-23
Job Ticket: 58734 **DST#: 2**
Test Start: 2014.08.18 @ 09:13:00

Tool Information

| | | | | | |
|---------------------------|--------------------|-----------------------|--------------------------------|------------------------|-------------|
| Drill Pipe: | Length: 3255.00 ft | Diameter: 3.80 inches | Volume: 45.66 bbl | Tool Weight: | 2000.00 lb |
| Heavy Wt. Pipe: | Length: 0.00 ft | Diameter: 2.75 inches | Volume: 0.00 bbl | Weight set on Packer: | 25000.00 lb |
| Drill Collar: | Length: 0.00 ft | Diameter: 2.25 inches | Volume: 0.00 bbl | Weight to Pull Loose: | 64000.00 lb |
| | | | <u>Total Volume: 45.66 bbl</u> | Tool Chased | 0.00 ft |
| Drill Pipe Above KB: | 4.00 ft | | | String Weight: Initial | 42000.00 lb |
| Depth to Top Packer: | 3271.00 ft | | | Final | 52000.00 lb |
| Depth to Bottom Packer: | ft | | | | |
| Interval between Packers: | 29.00 ft | | | | |
| Tool Length: | 49.00 ft | | | | |
| Number of Packers: | 2 | Diameter: 6.75 inches | | | |

Tool Comments:

Tool Description

| Tool Description | Length (ft) | Serial No. | Position | Depth (ft) | Accum. Lengths |
|---------------------------|--------------|------------|----------|------------|------------------------------------|
| Change Over Sub | 1.00 | | | 3252.00 | |
| Shut In Tool | 5.00 | | | 3257.00 | |
| Hydraulic tool | 5.00 | | | 3262.00 | |
| Packer | 5.00 | | | 3267.00 | 20.00 Bottom Of Top Packer |
| Packer | 4.00 | | | 3271.00 | |
| Stubb | 1.00 | | | 3272.00 | |
| Recorder | 0.00 | 8651 | Inside | 3272.00 | |
| Recorder | 0.00 | 8655 | Outside | 3272.00 | |
| Perforations | 25.00 | | | 3297.00 | |
| Bullnose | 3.00 | | | 3300.00 | 29.00 Bottom Packers & Anchor |
| Total Tool Length: | 49.00 | | | | |



**TRILOBITE
TESTING, INC**

DRILL STEM TEST REPORT

FLUID SUMMARY

American Warrior, Inc
 PO Box 399
 Garden City, KS 67846
 ATTN: Jim Musgrove

23-17s-14w Barton,KS
Tempero #8-23
 Job Ticket: 58734 **DST#: 2**
 Test Start: 2014.08.18 @ 09:13:00

Mud and Cushion Information

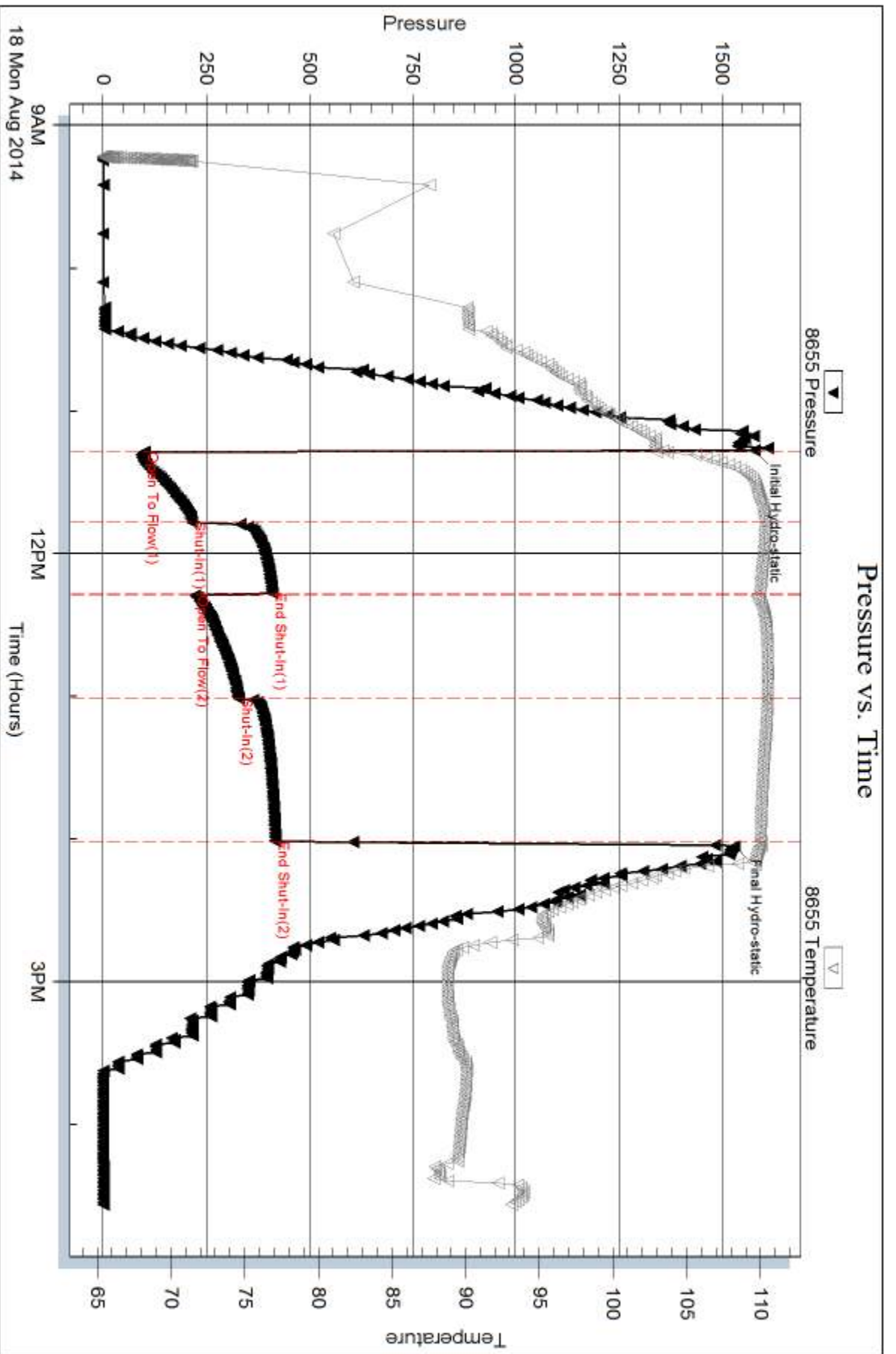
| | | |
|----------------------------------|----------------------------|---------------------|
| Mud Type: Gel Chem | Cushion Type: | Oil API: 41 deg API |
| Mud Weight: 9.00 lb/gal | Cushion Length: ft | Water Salinity: ppm |
| Viscosity: 49.00 sec/qt | Cushion Volume: bbl | |
| Water Loss: 7.58 in ³ | Gas Cushion Type: | |
| Resistivity: ohm.m | Gas Cushion Pressure: psig | |
| Salinity: 3100.00 ppm | | |
| Filter Cake: inches | | |

Recovery Information

Recovery Table

| Length ft | Description | Volume bbl |
|--------------|-------------------------------|---------------|
| 0.00 | GIP-2331' 100%g | 0.000 |
| 330.00 | GCO, 30%g, 70%o | 4.629 |
| 252.00 | VSMOCC, 5%m, 45%o, 50%g | 3.535 |
| 126.00 | VSMWOCG, 5%m, 5%w, 40%o, 50%g | 1.767 |
| 126.00 | VSMCW, 5%m, 95%w | 1.767 |

Total Length: 834.00 ft Total Volume: 11.698 bbl
 Num Fluid Samples: 0 Num Gas Bombs: 0 Serial #:
 Laboratory Name: Laboratory Location:
 Recovery Comments: .066 @ 99 degrees = 36,000 Salinity



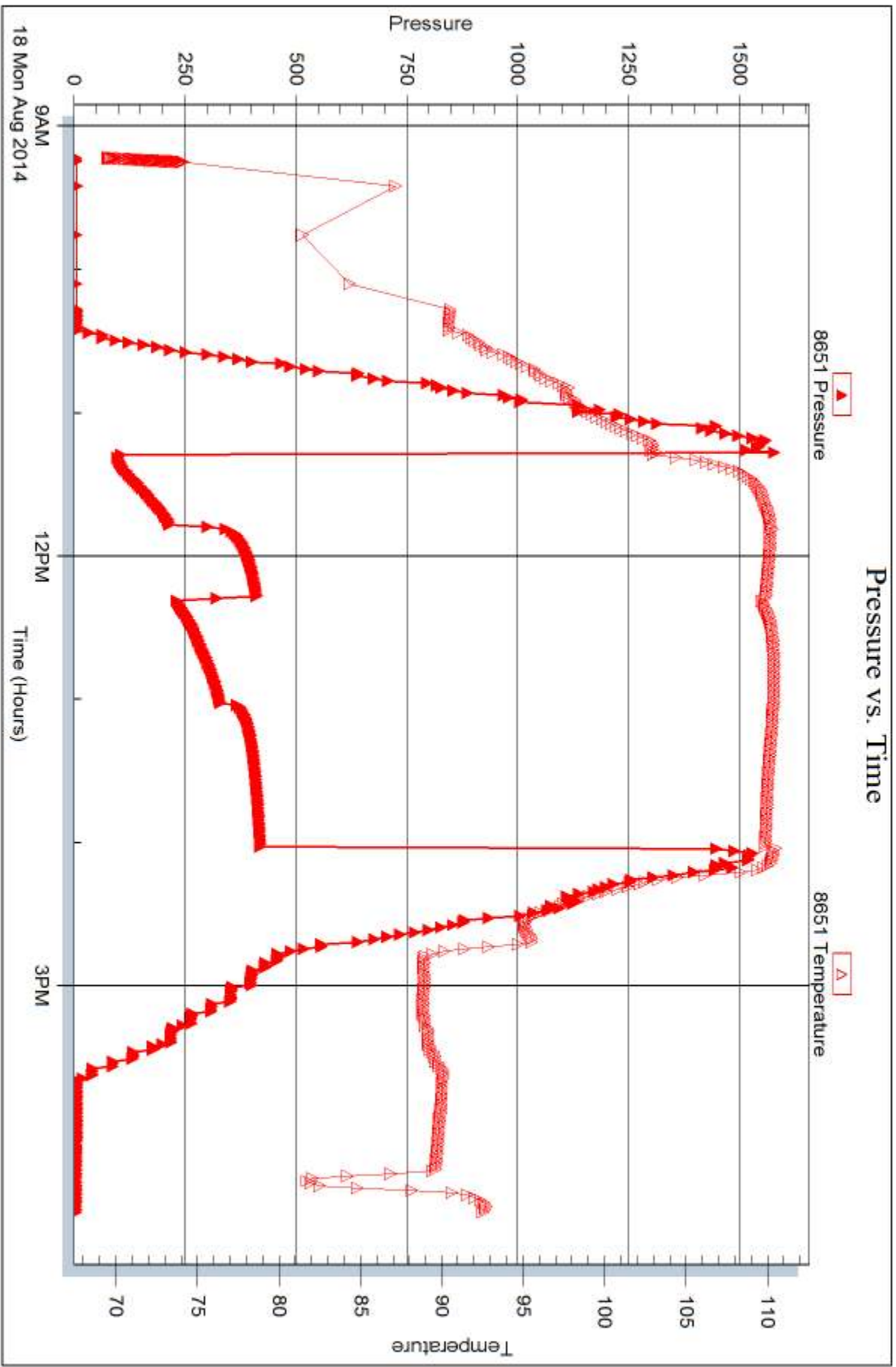
Serial #: 8651

Inside

American Warrior, Inc

Tempero #8-23

DST Test Number: 2



Triobite Testing, Inc

Ref. No: 58734

Printed: 2014.08.21 @ 14:37:47



DRILL STEM TEST REPORT

Prepared For: **American Warrior, Inc**

PO Box 399
Garden City, KS 67846

ATTN: Jim Musgrove

Tempero #8-23

23-17s-14w Barton,KS

Start Date: 2014.08.19 @ 04:52:00

End Date: 2014.08.19 @ 10:19:00

Job Ticket #: 58735 DST #: 3

Trilobite Testing, Inc
1515 Commerce Parkway Hays, KS 67601
ph: 785-625-4778 fax: 785-625-5620

Printed: 2014.08.21 @ 14:36:41



TRILOBITE TESTING, INC.

DRILL STEM TEST REPORT

American Warrior, Inc
 PO Box 399
 Garden City, KS 67846
 ATTN: Jim Musgrove

23-17s-14w Barton,KS

Temporo #8-23

Job Ticket: 58735 **DST#: 3**
 Test Start: 2014.08.19 @ 04:52:00

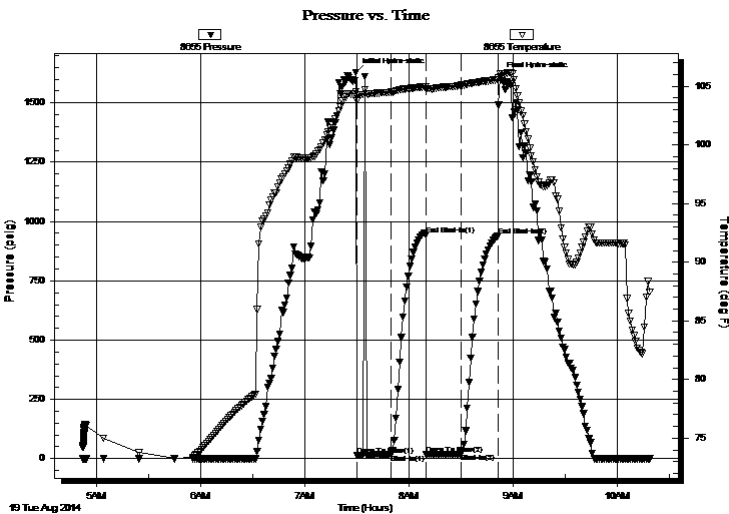
GENERAL INFORMATION:

Formation: **Arbuckle**
 Deviated: No Whipstock: ft (KB)
 Time Tool Opened: 07:30:00
 Time Test Ended: 10:19:00
 Interval: **3354.00 ft (KB) To 3410.00 ft (KB) (TVD)**
 Total Depth: 3410.00 ft (KB) (TVD)
 Hole Diameter: 7.88 inches Hole Condition: Fair
 Test Type: Conventional Bottom Hole (Reset)
 Tester: Phillip Gage
 Unit No: 62
 Reference Elevations: 1913.00 ft (KB)
 1905.00 ft (CF)
 KB to GR/CF: 8.00 ft

Serial #: 8655 Outside
 Press@RunDepth: 20.38 psig @ 3355.00 ft (KB) Capacity: 8000.00 psig
 Start Date: 2014.08.19 End Date: 2014.08.19 Last Calib.: 2014.08.19
 Start Time: 04:52:01 End Time: 10:19:00 Time On Btm: 2014.08.19 @ 07:29:30
 Time Off Btm: 2014.08.19 @ 08:52:30

TEST COMMENT: 20-IF-No Blow , Flushed, No Blow
 20-ISI-No Return
 20-FF-No Blow
 20-FSI-No Return

PRESSURE SUMMARY



| Time (Min.) | Pressure (psig) | Temp (deg F) | Annotation |
|-------------|-----------------|--------------|----------------------|
| 0 | 1628.79 | 104.55 | Initial Hydro-static |
| 1 | 14.74 | 103.74 | Open To Flow (1) |
| 20 | 16.62 | 104.50 | Shut-In(1) |
| 40 | 944.04 | 104.97 | End Shut-In(1) |
| 41 | 17.32 | 104.81 | Open To Flow (2) |
| 61 | 20.38 | 105.09 | Shut-In(2) |
| 82 | 939.94 | 105.56 | End Shut-In(2) |
| 83 | 1611.33 | 106.07 | Final Hydro-static |

Recovery

| Length (ft) | Description | Volume (bbl) |
|-------------|------------------|--------------|
| 10.00 | VSOCM, 5%o, 95%m | 0.14 |
| | | |
| | | |
| | | |
| | | |

* Recovery from multiple tests

Gas Rates

| Choke (inches) | Pressure (psig) | Gas Rate (Mcf/d) |
|----------------|-----------------|------------------|
| | | |



**TRILOBITE
TESTING, INC.**

DRILL STEM TEST REPORT

American Warrior, Inc
PO Box 399
Garden City, KS 67846
ATTN: Jim Musgrove

23-17s-14w Barton, KS

Tempero #8-23

Job Ticket: 58735 **DST#: 3**

Test Start: 2014.08.19 @ 04:52:00

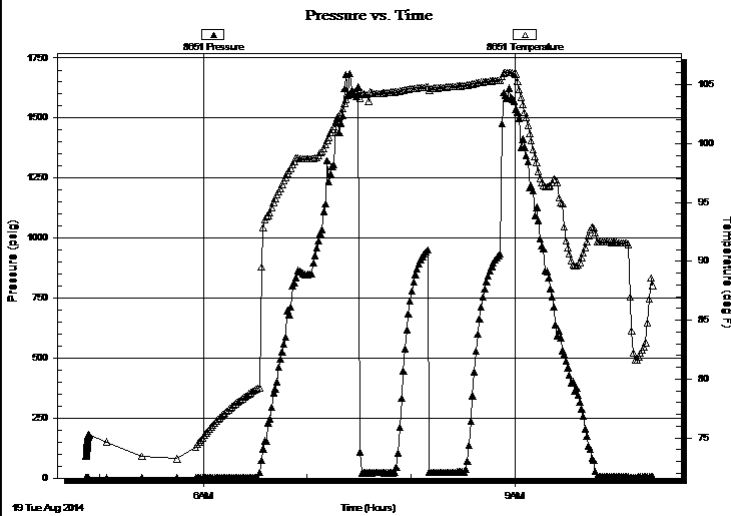
GENERAL INFORMATION:

| | | | | | |
|-------------------|---|-----------------|---------|-----------------------|----------------------------------|
| Formation: | Arbuckle | | | Test Type: | Conventional Bottom Hole (Reset) |
| Deviated: | No Whipstock: | | ft (KB) | Tester: | Phillip Gage |
| Time Tool Opened: | 07:30:00 | | | Unit No: | 62 |
| Time Test Ended: | 10:19:00 | | | Reference Elevations: | 1913.00 ft (KB) |
| Interval: | 3354.00 ft (KB) To 3410.00 ft (KB) (TVD) | | | | 1905.00 ft (CF) |
| Total Depth: | 3410.00 ft (KB) (TVD) | | | KB to GR/CF: | 8.00 ft |
| Hole Diameter: | 7.88 inches | Hole Condition: | Fair | | |

Serial #: 8651 Inside

| | | | | | |
|-----------------|------------|-----------------|------------|---------------|------------|
| Press@RunDepth: | psig @ | 3355.00 ft (KB) | Capacity: | 8000.00 psig | |
| Start Date: | 2014.08.19 | End Date: | 2014.08.19 | Last Calib.: | 2014.08.19 |
| Start Time: | 04:52:01 | End Time: | 10:20:00 | Time On Btm: | |
| | | | | Time Off Btm: | |

TEST COMMENT: 20-IF-No Blow, Flushed, No Blow
20-ISI-No Return
20-FF-No Blow
20-FSI-No Return



PRESSURE SUMMARY

| Time (Min.) | Pressure (psig) | Temp (deg F) | Annotation |
|-------------|-----------------|--------------|------------|
| | | | |

Recovery

| Length (ft) | Description | Volume (bbl) |
|-------------|------------------|--------------|
| 10.00 | VSOCM, 5%o, 95%m | 0.14 |
| | | |
| | | |
| | | |

* Recovery from multiple tests

Gas Rates

| Choke (inches) | Pressure (psig) | Gas Rate (Mcf/d) |
|----------------|-----------------|------------------|
| | | |



**TRILOBITE
TESTING, INC**

DRILL STEM TEST REPORT

TOOL DIAGRAM

American Warrior, Inc
PO Box 399
Garden City, KS 67846
ATTN: Jim Musgrove

23-17s-14w Barton,KS
Tempero #8-23
Job Ticket: 58735 **DST#: 3**
Test Start: 2014.08.19 @ 04:52:00

Tool Information

| | | | | |
|---------------------------|--------------------|-----------------------|--------------------------------|------------------------------------|
| Drill Pipe: | Length: 3350.00 ft | Diameter: 3.80 inches | Volume: 46.99 bbl | Tool Weight: 2000.00 lb |
| Heavy Wt. Pipe: | Length: 0.00 ft | Diameter: 2.75 inches | Volume: 0.00 bbl | Weight set on Packer: 25000.00 lb |
| Drill Collar: | Length: 0.00 ft | Diameter: 2.25 inches | Volume: 0.00 bbl | Weight to Pull Loose: 50000.00 lb |
| | | | <u>Total Volume: 46.99 bbl</u> | Tool Chased 0.00 ft |
| Drill Pipe Above KB: | 16.00 ft | | | String Weight: Initial 44000.00 lb |
| Depth to Top Packer: | 3354.00 ft | | | Final 46000.00 lb |
| Depth to Bottom Packer: | ft | | | |
| Interval between Packers: | 56.00 ft | | | |
| Tool Length: | 76.00 ft | | | |
| Number of Packers: | 2 | Diameter: 6.75 inches | | |

Tool Comments:

Tool Description

| Tool Description | Length (ft) | Serial No. | Position | Depth (ft) | Accum. Lengths |
|------------------|-------------|------------|----------|------------|-------------------------------|
| Change Over Sub | 1.00 | | | 3335.00 | |
| Shut In Tool | 5.00 | | | 3340.00 | |
| Hydraulic tool | 5.00 | | | 3345.00 | |
| Packer | 5.00 | | | 3350.00 | 20.00 Bottom Of Top Packer |
| Packer | 4.00 | | | 3354.00 | |
| Stubb | 1.00 | | | 3355.00 | |
| Recorder | 0.00 | 8651 | Inside | 3355.00 | |
| Recorder | 0.00 | 8655 | Outside | 3355.00 | |
| Perforations | 19.00 | | | 3374.00 | |
| Change Over Sub | 1.00 | | | 3375.00 | |
| Drill Pipe | 31.00 | | | 3406.00 | |
| Change Over Sub | 1.00 | | | 3407.00 | |
| Bullnose | 3.00 | | | 3410.00 | 56.00 Bottom Packers & Anchor |

Total Tool Length: 76.00



**TRILOBITE
TESTING, INC**

DRILL STEM TEST REPORT

FLUID SUMMARY

American Warrior, Inc
 PO Box 399
 Garden City, KS 67846
 ATTN: Jim Musgrove

23-17s-14w Barton,KS
Tempero #8-23
 Job Ticket: 58735 **DST#: 3**
 Test Start: 2014.08.19 @ 04:52:00

Mud and Cushion Information

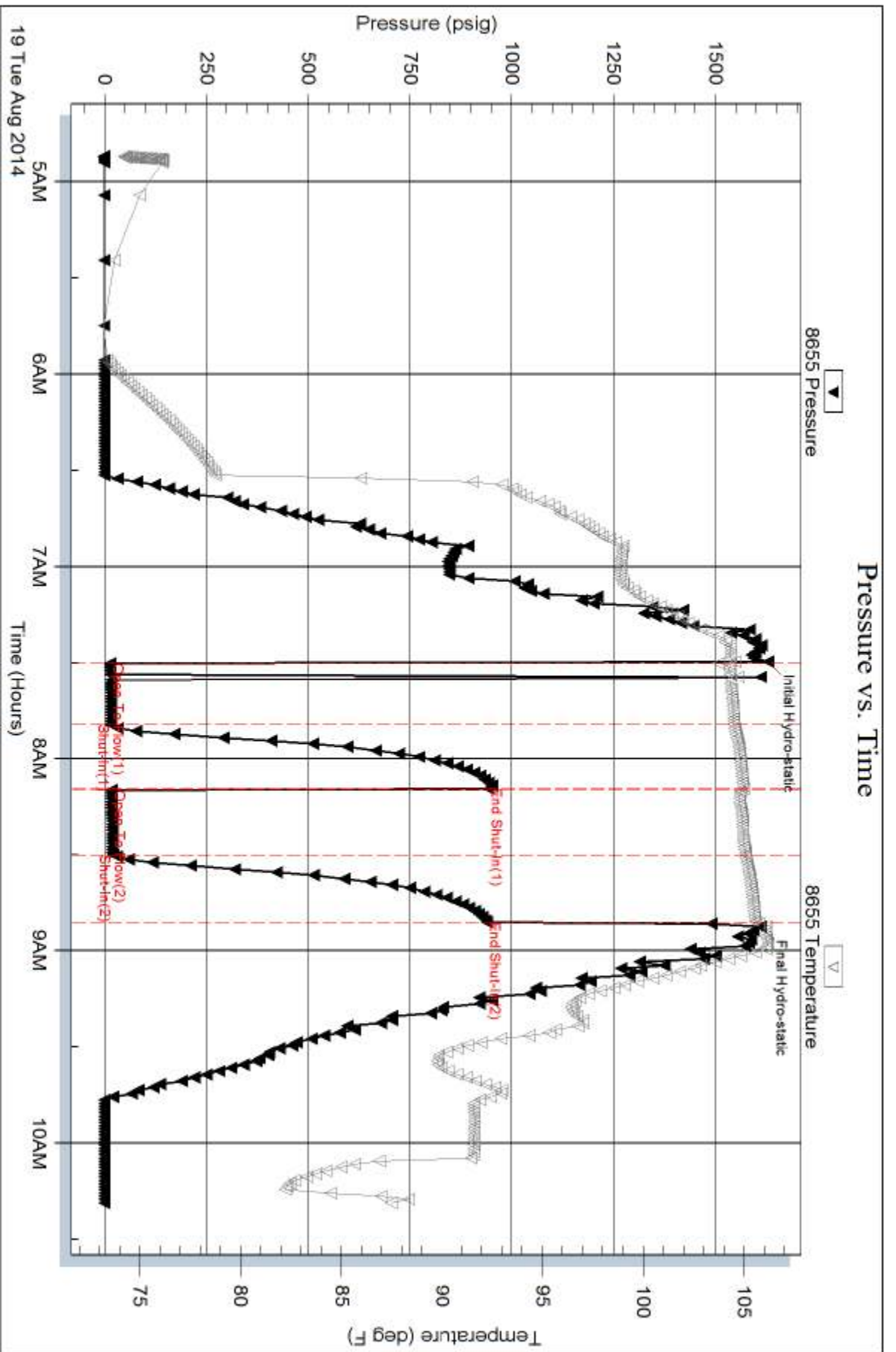
| | | | |
|----------------------------------|----------------------------|-----------------|---------|
| Mud Type: Gel Chem | Cushion Type: | Oil API: | deg API |
| Mud Weight: 9.00 lb/gal | Cushion Length: ft | Water Salinity: | ppm |
| Viscosity: 60.00 sec/qt | Cushion Volume: bbl | | |
| Water Loss: 7.19 in ³ | Gas Cushion Type: | | |
| Resistivity: ohm.m | Gas Cushion Pressure: psig | | |
| Salinity: 4000.00 ppm | | | |
| Filter Cake: inches | | | |

Recovery Information

Recovery Table

| Length ft | Description | Volume bbl |
|--------------|------------------|---------------|
| 10.00 | VSOCM, 5%o, 95%m | 0.140 |

Total Length: 10.00 ft Total Volume: 0.140 bbl
 Num Fluid Samples: 0 Num Gas Bombs: 0 Serial #:
 Laboratory Name: Laboratory Location:
 Recovery Comments:



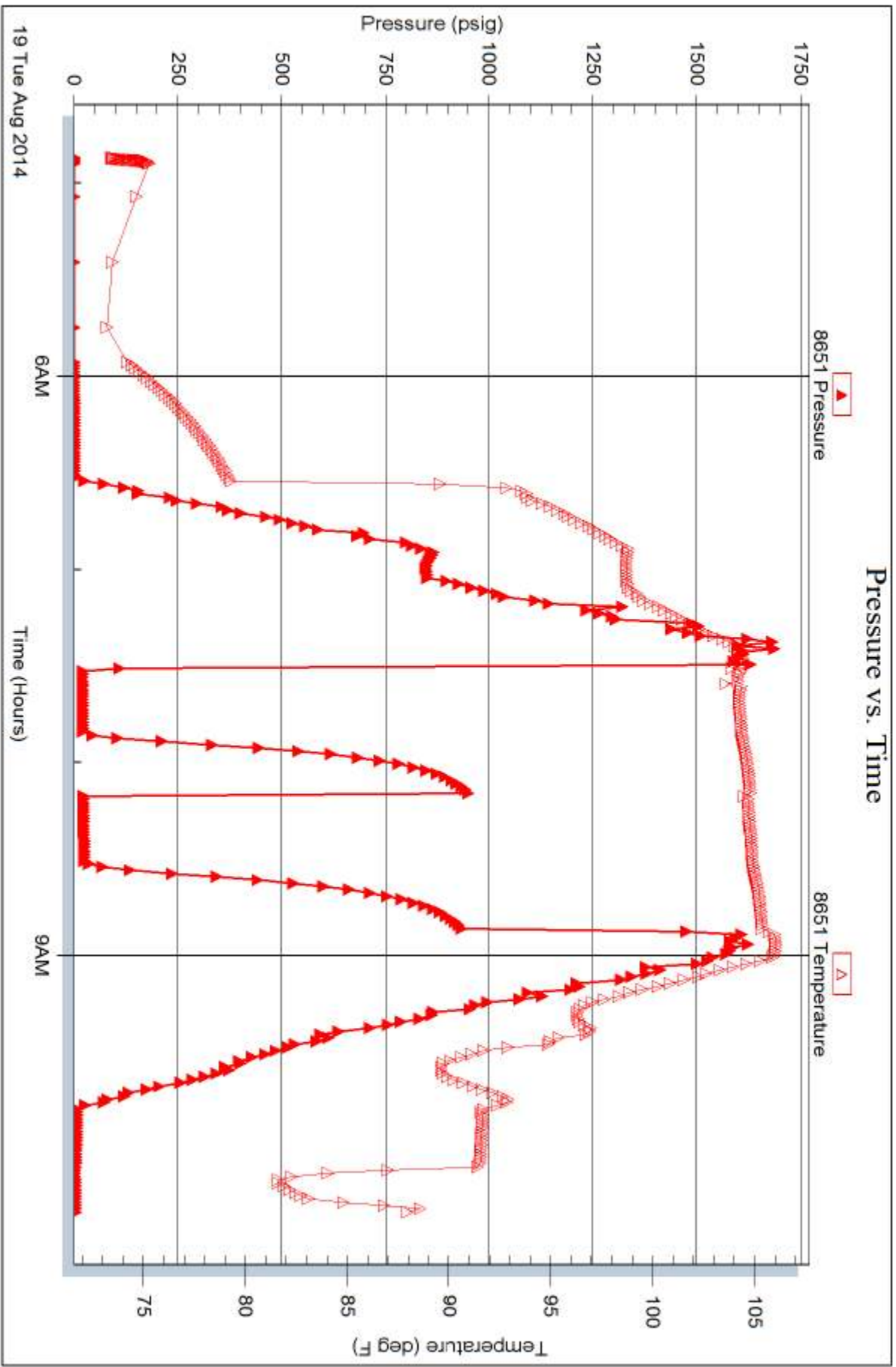
Serial #: 8651

Inside

American Warrior, Inc

Temporo #8-23

DST Test Number: 3



Trilobite Testing, Inc

Ref. No: 58735

Printed: 2014.08.21 @ 14:36:43



TRILOBITE TESTING INC.

1515 Commerce Parkway • Hays, Kansas 67601

Test Ticket

NO. 58733

4/10

Well Name & No. Tempco # 2-23 Test No. 1 Date 8-17-14
 Company American Warrior, Inc. Elevation 1913 KB 1905 GL
 Address 3118 Cummings RD P.O. Box 399 Garden City, KS 67846
 Co. Rep / Geo. Jim Musgrave Rig Duke 8
 Location: Sec. 23 Twp. 17s Rge. 14w Co. Barton State KS

Interval Tested 3194-3239 Zone Tested LKC "D-G"
 Anchor Length 45' Drill Pipe Run 3194 Mud Wt. 9.0
 Top Packer Depth 3189 Drill Collars Run 0 Vis 49
 Bottom Packer Depth 3194 Wt. Pipe Run 0 WL 7.6
 Total Depth 3239 Chlorides 3,100 ppm System LCM 0

Blow Description IF- BOB in 24 mins
ISI No Return
FF Built to 9"
FSI - Weak Surface Return at 5 mins, died in 2 mins.

| Rec | Feet of | %gas | %oil | %water | %mud |
|---------------|---------------------|------|------|--------|------|
| 10 | GIP - 126' | 100 | | | |
| 20' | SO (m) | | 10 | | 90 |
| 631 | WCM, with oil spots | | | 40 | 60 |
| | | | | | |
| | | | | | |

Rec Total 831 BHT 108 Gravity — API RW 141 @ 67° F Chlorides 24,000 ppm

(A) Initial Hydrostatic 1536 Test 1150 T-On Location 17:14
 (B) First Initial Flow 20 Jars _____ T-Started 18:35
 (C) First Final Flow 36 Safety Joint _____ T-Open 21:45
 (D) Initial Shut-In 326 Circ Sub _____ T-Pulled 00:30
 (E) Second Initial Flow 41 Hourly Standby _____ T-Out 02:08
 (F) Second Final Flow 54 Mileage 94 RT 145.70 Comments _____
 (G) Final Shut-In 361 Sampler _____
 (H) Final Hydrostatic 1515 Straddle _____ Ruined Shale Packer _____
 Shale Packer _____ Ruined Packer _____

Initial Open 30 Extra Packer _____ Extra Copies _____
 Initial Shut-In 30 Extra Recorder _____ Sub Total 0
 Final Flow 45 Day Standby _____ Total 1295.70
 Final Shut-In 60 Accessibility _____ MP/DST Disc't _____
 Sub Total 1295.70

Approved By _____ Our Representative Phil Hayes Thank You
 Trilobite Testing Inc. shall not be liable for damaged of any kind of the property or personnel of the one for whom a test is made, or for any loss suffered or sustained, directly or indirectly, through the use of its equipment, or its statements or opinion concerning the results of any test, tools lost or damaged in the hole shall be paid for at cost by the party to whom the test is made.



TRILOBITE TESTING INC.

1515 Commerce Parkway • Hays, Kansas 67601

Test Ticket

NO. 58734

4/10

Well Name & No. Tempero #8-23 Test No. 2 Date 8-18-14
 Company American Warrior, Inc Elevation 1913 KB 1905 GL
 Address 3118 Cammings RD P.O. Box 399 Garden City, KS 67846
 Co. Rep / Geo. Jim Musgrave Rig Duke 8
 Location: Sec. 23 Twp. 17s Rge. 14w Co. Barton State KS

Interval Tested 3271-3300 Zone Tested LKC "H"
 Anchor Length 29' Drill Pipe Run 3255 Mud Wt. 9.0
 Top Packer Depth 3266 Drill Collars Run — Vis 60
 Bottom Packer Depth 3271 Wt. Pipe Run — WL 7.2
 Total Depth 3300 Chlorides 4,000 ppm System LCM 0

Blow Description IF- BOB in 1 min.
ISF BOB Return in 3 mins.
FF- BOB in 3 mins, Gas to surface, unable to gauge.
FSL- BOB Return in 5 mins.

| Rec | Feet of | %gas | %oil | %water | %mud |
|-------------|------------------|-------------|------------|------------|-----------|
| <u>0</u> | <u>GIP-2331'</u> | <u>100%</u> | | | |
| <u>330'</u> | <u>GCO</u> | <u>30%</u> | <u>70%</u> | | |
| <u>252'</u> | <u>USMOCB</u> | <u>50%</u> | <u>45%</u> | | <u>5%</u> |
| <u>126'</u> | <u>USNWOCB</u> | <u>50%</u> | <u>40%</u> | <u>5%</u> | <u>5%</u> |
| <u>126'</u> | <u>USMCW</u> | | | <u>95%</u> | <u>5%</u> |

Rec Total 834' BHT 110 Gravity 41 API RW .066 @ 99 °F Chlorides 36,000 ppm

(A) Initial Hydrostatic 1578 Test 1150 T-On Location 09:12
 (B) First Initial Flow 101 Jars _____ T-Started 09:13
 (C) First Final Flow 216 Safety Joint _____ T-Open 11:17
 (D) Initial Shut-In 410 Circ Sub _____ T-Pulled 14:02
 (E) Second Initial Flow 222 Hourly Standby _____ T-Out 16:35
 (F) Second Final Flow 328 Mileage 94 RT 145.70
 (G) Final Shut-In 413 Sampler _____
 (H) Final Hydrostatic 1530 Straddle _____ Ruined Shale Packer _____
 Shale Packer _____ Ruined Packer _____
 Extra Packer _____ Extra Copies _____
 Extra Recorder _____

Initial Open 30
 Initial Shut-In 30
 Final Flow 45
 Final Shut-In 60
 Sub Total 1295.70
 Total 1295.70
 MP/DST Disc't _____

Approved By _____ Our Representative Phil Long Thank You.

Trilobite Testing Inc. shall not be liable for damaged or any kind of the property or personnel of the one for whom a test is made, or for any loss suffered or sustained, directly or indirectly, through the use of its equipment, or its statements or opinion concerning the results of any test, tools lost or damaged in the hole shall be paid for at cost by the party for whom the test is made.



TRILOBITE TESTING INC.

1515 Commerce Parkway • Hays, Kansas 67601

Test Ticket

NO. 58735

4/10

Well Name & No. Tempero #8-23 Test No. 3 Date 8-19-14
 Company American Warrior, Inc Elevation 1913 KB 1905 GL
 Address 3118 Cummings RD P.O. Box 399 Garden City, KS 67846
 Co. Rep / Geo. Jim Musgrave Rig Duke 8
 Location: Sec. 23 Twp. 17S Rge. 14W Co. Barton State KS

Interval Tested 3354-3410 Zone Tested Arbuckle
 Anchor Length 56 Drill Pipe Run 3350 Mud Wt. 9.0
 Top Packer Depth 3349 Drill Collars Run — Vis 60
 Bottom Packer Depth 3354 Wt. Pipe Run — WL 7.2
 Total Depth 3410 Chlorides 4,000 ppm System LCM 0
 Blow Description IF- No Blow, Flushed, No Blow
ISI- No Return
FF- No Blow
FSI- No Return

| Rec | Feet of | %gas | %oil | %water | %mud |
|------------|--------------|------|----------|--------|-----------|
| <u>10'</u> | <u>USOLM</u> | | <u>5</u> | | <u>95</u> |
| Rec | Feet of | %gas | %oil | %water | %mud |
| Rec | Feet of | %gas | %oil | %water | %mud |
| Rec | Feet of | %gas | %oil | %water | %mud |

Rec Total 10' BHT 106 Gravity — API RW — @ — °F Chlorides — ppm
 (A) Initial Hydrostatic 1628 Test 1150 T-On Location 04:50
 (B) First Initial Flow 19 Jars — T-Started 04:52
 (C) First Final Flow 16 Safety Joint — T-Open 07:31
 (D) Initial Shut-In 944 Circ Sub — T-Pulled 08:51
 (E) Second Initial Flow 17 Hourly Standby — T-Out 10:21
 (F) Second Final Flow 20 Mileage 94 RT 145.70 Comments —
 (G) Final Shut-In 939 Sampler —
 (H) Final Hydrostatic 1,611 Straddle — Ruined Shale Packer —
 Shale Packer — Ruined Packer —
 Extra Packer — Extra Copies —
 Initial Open 20 Extra Recorder — Sub Total 0
 Initial Shut-In 20 Day Standby — Total 1295.70
 Final Flow 20 Accessibility — MP/DST Disc't —
 Final Shut-In 20 Sub Total 1295.70

Approved By — Our Representative Phil Kay Thank You

Trilobite Testing Inc. shall not be liable for damaged of any kind of the property or personnel of the one for whom a test is made, or for any loss suffered or sustained, directly or indirectly, through the use of its equipment, or its statements or opinion concerning the results of any test, tools lost or damaged in the hole shall be paid for at cost by the party for whom the test is made.

JAMES C. MUSGROVE

Petroleum Geologist, LLC
212 Main Street
P.O. Box 215
Claflin, KS 67525

Office (620) 588-4250

Res. Claflin (620) 587-3444

American Warrior Inc.
Tempero #8-23
NE-SW-NE-SE (1703' FSL & 918' FEL)
Section 23-17s-14w
Barton County, Kansas

Page 1

5 1/2" Production Casing Set

Contractor: Duke Drilling Co. (rig #8)

Commenced: August 13, 2014

Completed: August 19, 2014

Elevation: 1913' K.B., 1911' D.F., 1905' G.L.

Casing program: Surface; 8 5/8" @ 848'
Production, 5 1/2" @ 3500'

Sample: Samples saved and examined 2900' to the Rotary Total Depth.

Drilling time: One (1) foot drilling time recorded and kept 2900 ft. to the Rotary Total Depth.

Measurements: All depths measured from the Kelly Bushing.

Drill Stem Tests: There were three (3) Drill Stem Tests ran by Trilobite Testing Co.

Electric Log: By Pioneer Energy Services; Dual Induction, Dual Compensated Porosity Log and Micro-resistivity Log.

| <u>Formation</u> | <u>Log Depth</u> | <u>Sub-Sea Datum</u> |
|--------------------|------------------|----------------------|
| Anhydrite | 874 | +1039 |
| Base Anhydrite | 901 | +1012 |
| Heebner | 3075 | -1162 |
| Toronto | 3087 | -1174 |
| Brown Lime | 3149 | -1236 |
| Lansing | 3158 | -1245 |
| Base Kansas City | 3361 | -1448 |
| Conglomerate | 3366 | -1453 |
| Arbuckle | 3391 | -1478 |
| Rotary Total Depth | 3500 | -1587 |
| Log Total Depth | 3503 | -1590 |

(All tops and zones corrected to Electric Log Measurement)

American Warrior Inc.
Tempero #8-23
NE-SW-NE-SE (1703' FSL & 918' FEL)
Section 23-17s-14w
Barton County, Kansas

Page 2

SAMPLE ANALYSIS, SHOWS OF OIL, TESTING DATA, ETC.

TOPEKA SECTION

3020-3040 Limestone, white, gray, finely crystalline, finely oomoldic, scattered porosity, gray and black stain, no show of free oil and no odor in fresh samples.

TORONTO SECTION

3087-3100' Limestone, tan, finely crystalline, slightly cherty, fair with scattered vuggy type porosity, brown and dark brown stain, no show of free oil and faint odor in fresh samples.

LANSING SECTION

3161-3167' Limestone, white, gray, oolitic, oomoldic, fair porosity, trace brown and dark brown stain, show of free oil and faint and fair odor in fresh samples.

3188-3193' Limestone white, oomoldic, fair oomoldic porosity, plus white, oolitic chert, no shows.

3206-3211' Limestone, white, gray, oolitic, chalky, spotty brown stain, no free oil and no odor, plus gray and white chert.

3221-3226' Limestone, white, gray, oolitic, fossiliferous, chalky, trace golden brown stain, show of free oil and faint odor.

3231-3240' Limestone, white, gray, cream, oolitic, oomoldic, fair porosity, golden brown and light brown stain, weak show of free oil and faint odor.

American Warrior Inc.
Tempero #8-23
NE-SW-NE-SE (1703' FSL & 918' FEL)
Section 23-17s-14w
Barton County, Kansas

Page 3

Drill Stem Test #1 **3194-3239**

Times: 30-30-45-60

Blow: Strong

Recovery: 126' gas in pipe
20' slightly oil cut mud
(10% oil; 90% mud)
631' muddy water with oil spots

Pressures: ISIP 326 psi
FSIP 361 psi
IFP 20-36 psi
FFP 41-54 psi
HSH 1536-1515 psi

3250-3280' Limestone, tan, brown finely crystalline, few cherty, (dense).

3291-3300' Limestone, tan, oomoldic, good oomoldic porosity, good stain and saturation, show of free oil and fair odor in fresh samples.

Drill Stem Test #2 **3271-3300**

Times: 30-30-45-60

Blow: Strong; gas to surface
3 minutes into final flow,
T.S.T.M.

Recovery: 2331' gas in pipe
330' clean gassy oil
252' muddy gassy oil
126' gassy slightly watery and mud cut oil
(50% gas; 40% oil; 5% water; 5% mud)
126' muddy water

Pressures: ISIP 410 psi
FSIP 417 psi
IFP 101-216 psi
FFP 222-328 psi
HSH 1578-1530 psi

- 3316-3320' Limestone, white, finely crystalline, slightly oolitic, highly chalky, black stain, no show of free oil and faint odor in fresh samples.
- 3322-3345' Limestone, white, gray, finely crystalline, finely oomoldic, scattered inter-crystalline, oomoldic and finely vuggy porosity, golden brown stain, show of free oil and faint odor in fresh samples.
- 3345-3355' Limestone, white, gray, finely crystalline, fair to good inter-crystalline porosity, good stain and saturation, show of free oil and faint to fair odor in fresh samples.

CONGLOMERATE SECTION

- 3366-3391' Chert, peach, orange, gray, amber, opaque, plus white, oolitic, boney/opaque and varied shale.

ARBUCKLE SECTION

- 3391-3410' Dolomite, tan, gray, finely crystalline, faint inter-crystalline porosity, brown stain, show of free oil and faint odor in fresh samples.

Drill Stem Test #3 3354-3410

Times: 20-20-20-20

Blow: Weak

**Recovery: 10' very slightly oil cut mud
(5% oil; 95% mud)**

**Pressures: ISIP 944 psi
FSIP 939 psi
IFP 14-16 psi
FFP 17-20 psi
HSH 1628-1611 psi**

- 3410-3420' Dolomite, tan, brown fine and medium crystalline, brown stain, show of free oil and faint to fair odor in fresh samples.
- 3420-3440' Dolomite, white, gray, oolitic, sub-oomoldic, trace poor stain, trace of free oil; plus white, gray oolitic chert.

American Warrior Inc.
Tempero #8-23
NE-SW-NE-SE (1703' FSL & 918' FEL)
Section 23-17s-14w
Barton County, Kansas

Page 5

| | |
|------------|--|
| 3440-3460' | Dolomite, white, gray, fine and medium crystalline, sandy; fair porosity, no shows. |
| 3460-3480' | Dolomite, as above, few glauconitic, fair inter-crystalline and vuggy type porosity, no shows. |
| 3480-3500' | Dolomite, as above, plus white boney chert, no shows. |

Rotary Total Depth: 3500
Log Total Depth: 3503

Recommendations:

5 ½ production casing was set and cemented on the American Warrior Inc., Tempero #8-23.

Respectfully Submitted,

James C. Musgrove
Petroleum Geologist

ALLIED OIL & GAS SERVICES, LLC 063570

Federal Tax I.D. # 20-8651475

REMIT TO P.O. BOX 93999
SOUTHLAKE, TEXAS 76092

SERVICE POINT:
Great Bend

| | | | | | | | |
|--------------------------------|---------------|--------------------|---------------------|--|----------------------------|---------------------------|----------------------------|
| DATE <u>8-14-14</u> | SEC <u>23</u> | TWP. <u>17</u> | RANGE <u>14</u> | CALLED OUT | ON LOCATION <u>8:00 AM</u> | JOB START <u>12:00 PM</u> | JOB FINISH <u>12:30 PM</u> |
| LEASE <u>Tempero</u> | | WELL # <u>8-23</u> | | LOCATION <u>Heishampton 4/281 1N To 130 Rd</u> | | COUNTY <u>Barton</u> | STATE <u>Ks</u> |
| OLD OR <u>NEW</u> (Circle one) | | | <u>1/2 E N into</u> | | | | |

CONTRACTOR Duke S
 TYPE OF JOB surface
 HOLE SIZE 12 1/4 T.D.
 CASING SIZE 8 5/8 28 CBS DEPTH 848.97
 TUBING SIZE _____ DEPTH _____
 DRILL PIPE _____ DEPTH _____
 TOOL _____ DEPTH _____
 PRES. MAX _____ MINIMUM _____
 MEAS. LINE _____ SHOE JOINT _____
 CEMENT LEFT IN CSG. 20' ft
 PERFS. _____
 DISPLACEMENT 51.72

EQUIPMENT

PUMP TRUCK CEMENTER Kevin Eddy + Josh Isaac
 # 597 HELPER Ben Newell
 BULK TRUCK
 # 870/1844 DRIVER 2cb Schualler
 BULK TRUCK
 # _____ DRIVER _____

REMARKS:

Allied on location Rigged up - Rig Ran
8 5/8 casing - broke circ. w/ Rig mud. mixed
475 sxs class A 3% cc 2% Gel. Displaced
51.72 BBLs flush H2O - Shut in. Cement
Did circ cement.
Rigged Down.

OWNER _____
 CEMENT
 AMOUNT ORDERED 475 Class A 3% cc
2% Gel

| | | | |
|----------|-----------------------|----------------|------------------|
| COMMON | <u>775</u> | @ <u>17.90</u> | <u>8,502.50</u> |
| POZMIX | | @ | |
| GEL | <u>900</u> | @ <u>.50</u> | <u>450.00</u> |
| CHLORIDE | <u>1339</u> | @ <u>1.10</u> | <u>1472.90</u> |
| ASC | | @ | |
| | <u>Material Total</u> | | <u>10,425.40</u> |
| | <u>Disc 25%</u> | | <u>2606.35</u> |
| | | @ | |
| | | @ | |
| | | @ | |
| | | @ | |
| HANDLING | <u>513.75</u> | @ <u>2.48</u> | <u>1,274.10</u> |
| MILEAGE | <u>23.44 x 18x</u> | <u>2.75</u> | <u>1,160.38</u> |

| | | | |
|--------------------|----------------|-----------------|---------------|
| DEPTH OF JOB _____ | | | |
| PUMP TRUCK CHARGE | <u>2058.20</u> | | |
| EXTRA FOOTAGE | | @ | |
| MILEAGE | <u>Hvm 18</u> | @ <u>7.70</u> | <u>138.60</u> |
| MANIFOLD | | @ <u>275.00</u> | <u>275.00</u> |
| | <u>Hvm 18</u> | @ <u>4.40</u> | <u>79.20</u> |
| | | @ | |

CHARGE TO: AMERICAN WARRIOR
 STREET _____
 CITY _____ STATE _____ ZIP _____

TOTAL 4,985.68
Disc 25% 1,246.42

PLUG & FLOAT EQUIPMENT

| | | |
|-----------------------|-----------------|---------------|
| <u>Rubber Plug</u> | @ <u>131.00</u> | <u>131.00</u> |
| <u>3 Centralizers</u> | @ <u>75.00</u> | <u>225.00</u> |
| | @ | |
| | @ | |
| | @ | |

TOTAL ~~356.00~~
356.00

SALES TAX (If Any) Disc 25% 89.00

TOTAL CHARGES 65,767.98

DISCOUNT 3,941.17 IF PAID IN 30 DAYS

11,825.31

PRINTED NAME Steve H. Stephens

SIGNATURE Steve H. Stephens

THANK YOU!

To: Allied Oil & Gas Services, LLC.
 You are hereby requested to rent cementing equipment and furnish cementer and helper(s) to assist owner or contractor to do work as is listed. The above work was done to satisfaction and supervision of owner agent or contractor. I have read and understand the "GENERAL TERMS AND CONDITIONS" listed on the reverse side.



CHARGE TO: American Warrior, Inc.
 ADDRESS _____
 CITY, STATE, ZIP CODE _____

TICKET 26674

PAGE 1 OF 2

| | | | | | | | |
|---|--|---------------------------------|---|--------------------------|--|------------------------|-------|
| SERVICE LOCATIONS 1. <u>Hays, Ks</u> | WELL/PROJECT NO. <u>8-23</u> | LEASE <u>Temporo</u> | COUNTY/PARISH <u>Barton</u> | STATE <u>Ks</u> | CITY | DATE <u>8-20-14</u> | OWNER |
| 2. <u>Ness City, Ks</u> | TICKET TYPE <input checked="" type="checkbox"/> SERVICE <input type="checkbox"/> SALES | CONTRACTOR <u>Duke</u> | RIG NAME/NO. <u>#8</u> | SHIPPED VIA <u>CR</u> | DELIVERED TO <u>NW/Hoisington, Ks</u> | ORDER NO. | |
| 3. | WELL TYPE <u>Oil</u> | WELL CATEGORY <u>Wildcat</u> | JOB PURPOSE <u>Cement Longstring</u> | WELL PERMIT NO. | WELL LOCATION | | |
| 4. | REFERRAL LOCATION | INVOICE INSTRUCTIONS | | | | | |

| PRICE REFERENCE | SECONDARY REFERENCE/ PART NUMBER | ACCOUNTING | | | DESCRIPTION | QTY. | | U/M | | UNIT PRICE | AMOUNT |
|-----------------|-------------------------------------|------------|------|----|---------------------------------|------|-----|-------|-----|------------|--------|
| | | LOC | ACCT | DF | | | | | | | |
| 575 | | 1 | | | MILEAGE #113 | 70 | mi | | | 600 | 42000 |
| 578 | | 1 | | | Pump Charge - cement longstring | 1 | ea | 3499 | ft. | 150000 | 150000 |
| 221 | | 1 | | | Liquid HCL | 2 | gal | | | 2500 | 5000 |
| 281 | | 1 | | | Mud Flush | 500 | gal | | | 1.25 | 62500 |
| 290 | | 1 | | | D-Air | 2 | gal | | | 4200 | 8400 |
| 402 | | 1 | | | Centralizers | 6 | ea | 5 1/2 | in | 7000 | 42000 |
| 403 | | 1 | | | Cement Baskets | 1 | ea | 5 1/2 | in | 30000 | 30000 |
| 406 | | 1 | | | Latch Down Plug & Baffle | 1 | ea | 5 1/2 | in | 27500 | 27500 |
| 407 | | 1 | | | Insert Float Shoe w/ Auto Bell | 1 | ea | 5 1/2 | in | 37500 | 37500 |

LEGAL TERMS: Customer hereby acknowledges and agrees to the terms and conditions on the reverse side hereof which include, but are not limited to, PAYMENT, RELEASE, INDEMNITY, and LIMITED WARRANTY provisions.

MUST BE SIGNED BY CUSTOMER OR CUSTOMER'S AGENT PRIOR TO START OF WORK OR DELIVERY OF GOODS

X [Signature]
 DATE SIGNED 8-20-14 TIME SIGNED 07:00 A.M. P.M.

REMIT PAYMENT TO:

SWIFT SERVICES, INC.
 P.O. BOX 466
 NESS CITY, KS 67560
 785-798-2300

| SURVEY | AGREE | UN-DECIDED | DIS-AGREE | | |
|--|------------------------------|-----------------------------|-----------|------------------|---------|
| OUR EQUIPMENT PERFORMED WITHOUT BREAKDOWN? | | | | P1 PAGE TOTAL | 4049 00 |
| WE UNDERSTOOD AND MET YOUR NEEDS? | | | | P2 | 5120 56 |
| OUR SERVICE WAS PERFORMED WITHOUT DELAY? | | | | subtotal | 9169 56 |
| WE OPERATED THE EQUIPMENT AND PERFORMED JOB CALCULATIONS SATISFACTORILY? | | | | Barton TAX 7.15% | 447 48 |
| ARE YOU SATISFIED WITH OUR SERVICE? | <input type="checkbox"/> YES | <input type="checkbox"/> NO | | TOTAL | 9617 04 |
| <input type="checkbox"/> CUSTOMER DID NOT WISH TO RESPOND | | | | | |

CUSTOMER ACCEPTANCE OF MATERIALS AND SERVICES The customer hereby acknowledges receipt of the materials and services listed on this ticket.

SWIFT OPERATOR [Signature] APPROVAL _____

Thank You!

JOB LOG

SWIFT Services, Inc.

DATE 8-20-14 PAGE NO. 1

CUSTOMER American Warrior, Inc. 8-23 WELL NO. 8-23 LEASE Tempero JOB TYPE Cement Longstring TICKET NO. 26699

| CHART NO. | TIME | RATE (BPM) | VOLUME (BBL) (GAL) | PUMPS | | PRESSURE (PSI) | | DESCRIPTION OF OPERATION AND MATERIALS |
|-----------|-------|------------|--------------------------------|-------|---|----------------------------------|-------------------------------|---|
| | | | | T | C | TUBING | CASING | |
| | 0645 | | | | | 15.5 [#] / ₄ | 5 ¹ / ₂ | On location - Float equip. Rig L.D. D.P. |
| | 0745 | | | | | | | L.D. Drill Collars |
| | 0930 | | | | | | | Insert Float Shoe w/ Auto-Rell, start 5 ¹ / ₂ " 15.5 [#] / ₄ casing to 3489 55-42' - L.D. Baffle = 3457' = 82 ¹ / ₂ BBL Cont. 1-3-5-7-9-11 Cont Bask on #4 Drop Rell up ball 3 sts out |
| | 10:45 | | | | | | | Fin casing - Tag |
| | 11:00 | | | | | | | start circ casing |
| | 11:30 | | | | | | | Fin circ Plug RH-30 SKS cont / RH-15 SKS cont |
| | | | 6 3 | | | | | |
| | | 5 | 12 | 32 | | | 300 | Pump 500 gal Mud Flush |
| | | 6 | 20 | 32 | | | 300 | Pump 20 BBL KLL Flush |
| | | | | | | | 300 | start 130 SKS EA-2 cont |
| | | | | | | | Var | Fin cont Wash Pump & Lines Drop L.D. Plug |
| | | 9 | | | | | 400 | Start Displ (82 ¹ / ₂ BBL) |
| | | 9 | 103 | | | | 450 | Caught lift press |
| | | 8 | 75 | | | | 600 | slow mt- |
| | | 6 | 81 | | | | 1200 | Press @ Plug down |
| | 12:15 | 0 | 82 ¹ / ₂ | | | | 1800 | Load Plug - Release & Hold. |
| | 12:30 | | | | | | | Job Complete Wash up & Ready |
| | 1300 | | | | | | | |

Thanks
Dan, Tom & Craig

