



TRILOBITE TESTING, INC.

DRILL STEM TEST REPORT

Samuel Gary Jr. & Associates Inc.

2/5s/24w

1515 Wynkoop STE 700
Denver, CO 80202

JMNJ Farm #1-2

Job Ticket: 56932

DST#: 2

ATTN: Dan Pritchard

Test Start: 2014.06.17 @ 09:20:00

GENERAL INFORMATION:

Formation: **LKC "A - C"**

Deviated: No Whipstock: ft (KB)

Time Tool Opened: 11:15:30

Time Test Ended: 17:11:30

Test Type: Conventional Bottom Hole (Reset)

Tester: James Winder

Unit No: 57

Interval: 3532.00 ft (KB) To 3576.00 ft (KB) (TVD)

Reference Elevations: 2411.00 ft (KB)

Total Depth: 3576.00 ft (KB) (TVD)

2403.00 ft (CF)

Hole Diameter: 7.88 inches Hole Condition: Fair

KB to GR/CF: 8.00 ft

Serial #: 8671

Inside

Press@RunDepth: 160.84 psig @ 3533.00 ft (KB)

Capacity: 8000.00 psig

Start Date: 2014.06.17

End Date:

2014.06.17

Last Calib.:

2014.06.17

Start Time: 09:20:05

End Time:

17:11:29

Time On Btm:

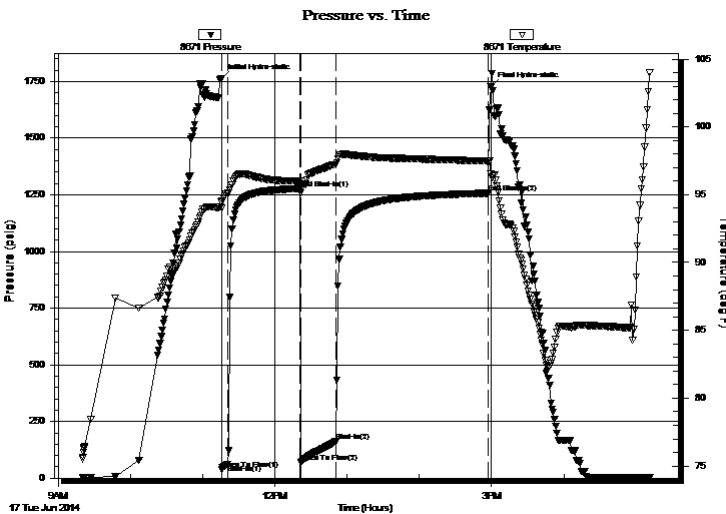
2014.06.17 @ 11:15:15

Time Off Btm:

2014.06.17 @ 14:59:15

TEST COMMENT: 5 - IF: Blow built to BOB (11") at 5 min.
60 - ISI: No blow back
30 - FF: Blow built to BOB at 5 min.
120 - FSI: Blow back built to BOB at 40 min.

PRESSURE SUMMARY



Time (Min.)	Pressure (psig)	Temp (deg F)	Annotation
0	1762.37	94.44	Initial Hydro-static
1	37.50	93.99	Open To Flow (1)
6	59.79	95.09	Shut-In(1)
65	1277.76	95.98	End Shut-In(1)
66	68.37	95.16	Open To Flow (2)
96	160.84	97.23	Shut-In(2)
222	1257.35	97.47	End Shut-In(2)
224	1725.44	96.54	Final Hydro-static

Recovery

Length (ft)	Description	Volume (bbl)
192.00	MWCO 75%o, 10%w, 9%g, 6%m	2.41
63.00	MWCO 38% om mix, 37%o, 16%w, 6%g	0.88
85.00	MCO 62%o, 31%m, 7%g	1.19
20.00	SMCO 92%o, 6%m, 2%g	0.28
0.00	GIP = 410'	0.00

* Recovery from multiple tests

Gas Rates

Choke (inches)	Pressure (psig)	Gas Rate (Mcf/d)



**TRILOBITE
TESTING, INC**

DRILL STEM TEST REPORT

FLUID SUMMARY

Samuel Gary Jr. & Associates Inc.

2/5s/24w

1515 Wynkoop STE 700
Denver, CO 80202

JMNJ Farm #1-2

Job Ticket: 56932

DST#: 2

ATTN: Dan Pritchard

Test Start: 2014.06.17 @ 09:20:00

Mud and Cushion Information

Mud Type: Gel Chem
Mud Weight: 9.00 lb/gal
Viscosity: 53.00 sec/qt
Water Loss: 8.79 in³
Resistivity: ohm.m
Salinity: 1000.00 ppm
Filter Cake: 1.00 inches

Cushion Type:
Cushion Length: ft
Cushion Volume: bbl
Gas Cushion Type:
Gas Cushion Pressure: psig

Oil API: deg API
Water Salinity: ppm

Recovery Information

Recovery Table

Length ft	Description	Volume bbl
192.00	MWCO 75%o, 10%w, 9%g, 6%m	2.411
63.00	MWCO 38% om mix, 37%o, 16%w, 6%m, 3%	0.884
85.00	MCO 62%o, 31%m, 7%g	1.192
20.00	SMCO 92%o, 6%m, 2%g	0.281
0.00	GIP = 410'	0.000

Total Length: 360.00 ft Total Volume: 4.768 bbl

Num Fluid Samples: 0 Num Gas Bombs: 0 Serial #:

Laboratory Name: Laboratory Location:

Recovery Comments: Gravity = 33 api @ 108 deg F Corrected Gravity = 28.2 api
Sampler : 730 PSI

1600 mL 90%o, 8%m, 2%g

400 mL 28%om mix, 28%g, 24%o, 15%w, 5%g

Serial #: 8671

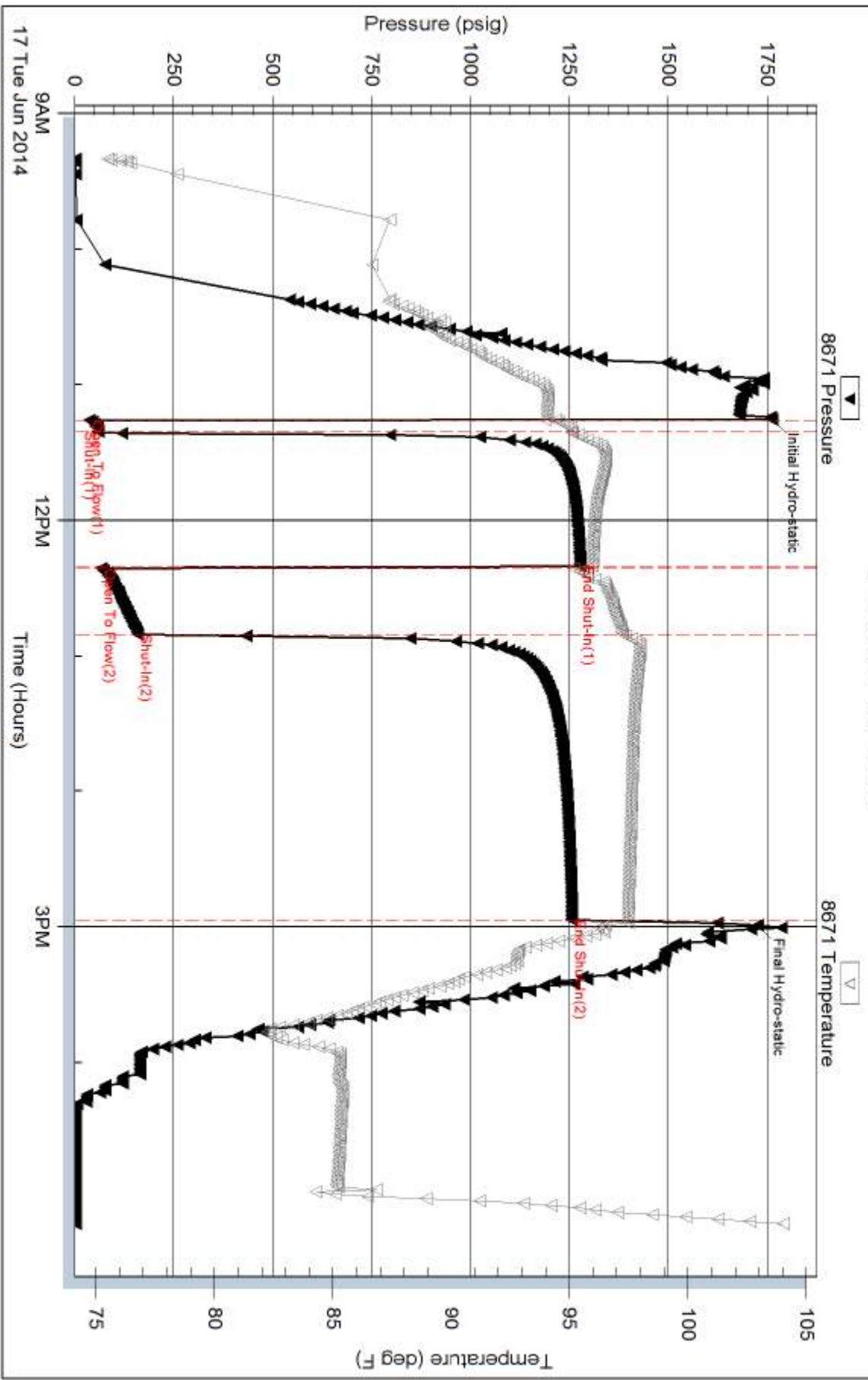
Inside

Samuel Gary Jr. & Associates Inc.

JMNJ Farm #1-2

DST Test Number: 2

Pressure vs. Time



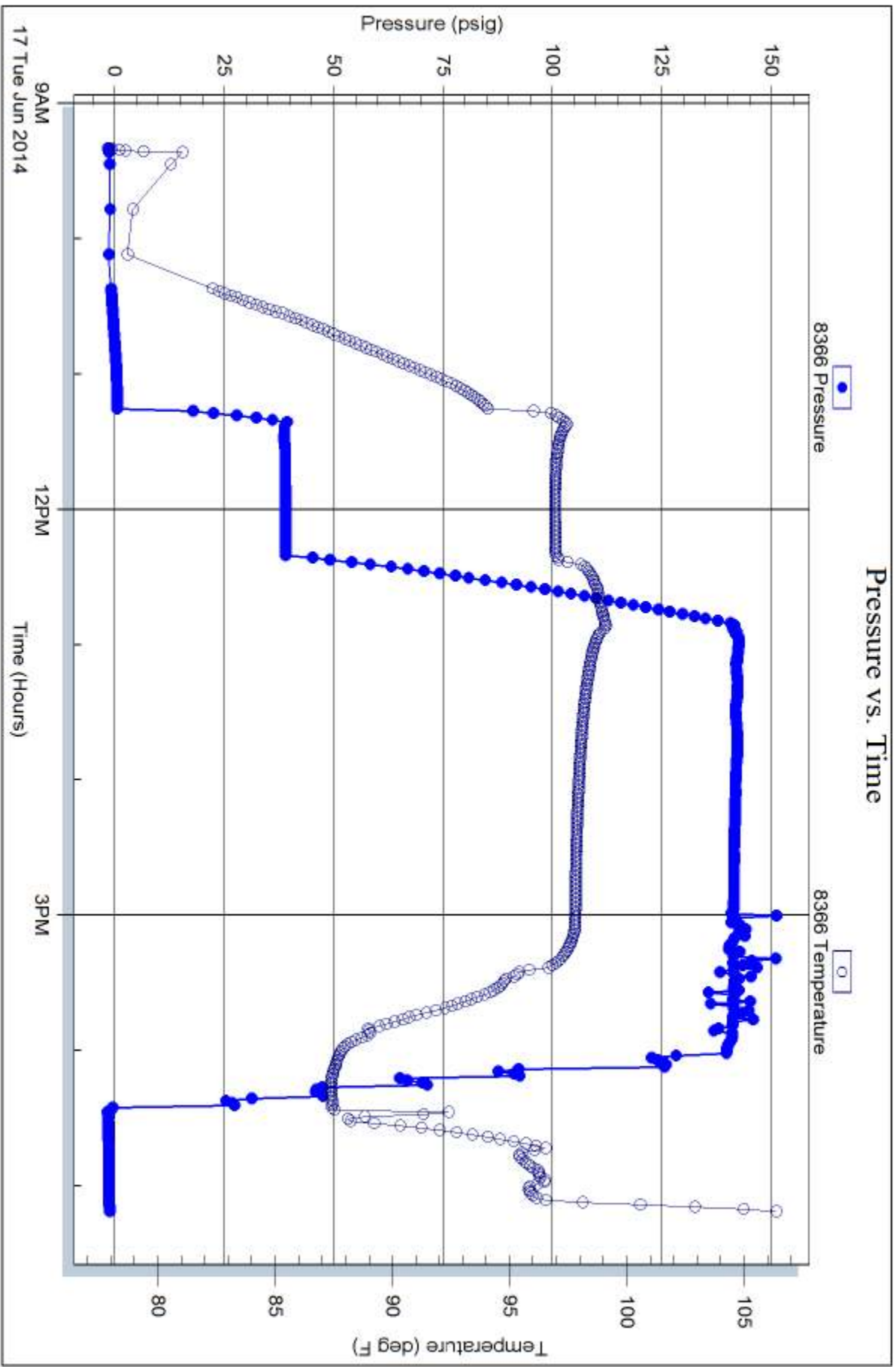
Serial #: 8366

Fluid

Samuel Gary Jr. & Associates Inc.

JMNJ Farm #1-2

DST Test Number: 2



Trilobite Testing, Inc

Ref. No: 56932

Printed: 2014.06.18 @ 08:30:13