

WELL INFORMATION

Company: L.D. DRILLING, INC.
 Address: 7 SW 26TH AVE
 GREAT BEND, KS 67530

Well Name: ANITA 1-12

Location: 2970 FSL, 1060 FWL
 SEC. 12- T13S - R29W
 GOVE COUNTY, KANSAS

API: 15-063-22215-00-00
 Field: WILDCAT

KB Elevation: 2695 Rotary Depth: 4530
 Ground Elevation: 2688 Log Depth: 4528

Spud Date: 9/04/2014 Drilling Completed: 9/15/2014

Completion: Surface Casing: 8 5/8" SET @ 369' Production Casing: 4.5" SET AT 4523

Formation at TD: MISSISSIPPIAN
 Drilling Fluid Type: CHEMICAL

Rig Contractor: SKYTOP DRILLING
 Logger: NABORS Logs Run: DI, CND, MICRO

Wellsite Geologist: LARRY P. FRIEND

FORMATION DEPTHS

COMPARED TO:
 RITCHIE EXPLOR., INC.
 MENDENHALL 7C #1
 E2 SW, 7-T13S-T28W (4/2014)

FORMATION DEPTHS	SAMPLE	LOG	
ANHYDRITE	2177 (+518)	2182 (+513)	-7
BASE ANHY.	2215 (+480)	2219 (+476)	-8
STOTLER	3442 (-747)	3440 (-745)	+12
HEEBNER SHALE	3804 (-1109)	3800 (-1105)	+20
LANSING	3842 (-1147)	3839 (-1144)	+21
MUNCIE CREEK	3978 (-1283)	3978 (-1283)	+18
STARK SHALE	4070 (-1375)	4068 (-1373)	+17
HUSHPUCKNEY SH.	4101 (-1406)	4099 (-1404)	+17
BS KANSAS CITY	4129 (-1434)	4127 (-1432)	+13
PLEASANTON	4139 (-1444)	4137 (-1442)	+14
MARMATON	4163 (-1468)	4161 (-1466)	+12
"PAWNEE"	4240 (-1545)	4237 (-1542)	+20
"MYRICK STATION"	4295 (-1600)	4291 (-1596)	+11
"FT. SCOTT"	4330 (-1635)	4330 (-1635)	+13
"CHEROKEE"	4356 (-1661)	4353 (-1658)	+17
"JOHNSON ZONE"	4394 (-1699)	4391 (-1696)	+17
BS PENN LIME	4410 (-1715)	4407 (-1712)	+17
MISSISSIPPIAN	4432 (-1737)	4429 (-1734)	+22

NOTES

DUE TO FAVORABLE DRILL STEM TEST RESULTS, IT WAS DECIDED TO RUN CASING AND PRODUCE THIS WELL.

AFTER BRIEF LOG EVALUATION, THE ZONES OF INTEREST THAT I SEE FOR FURTHER LOG EVALUATION AND / OR PERFORATION ARE: (THERE MAY BE MORE)

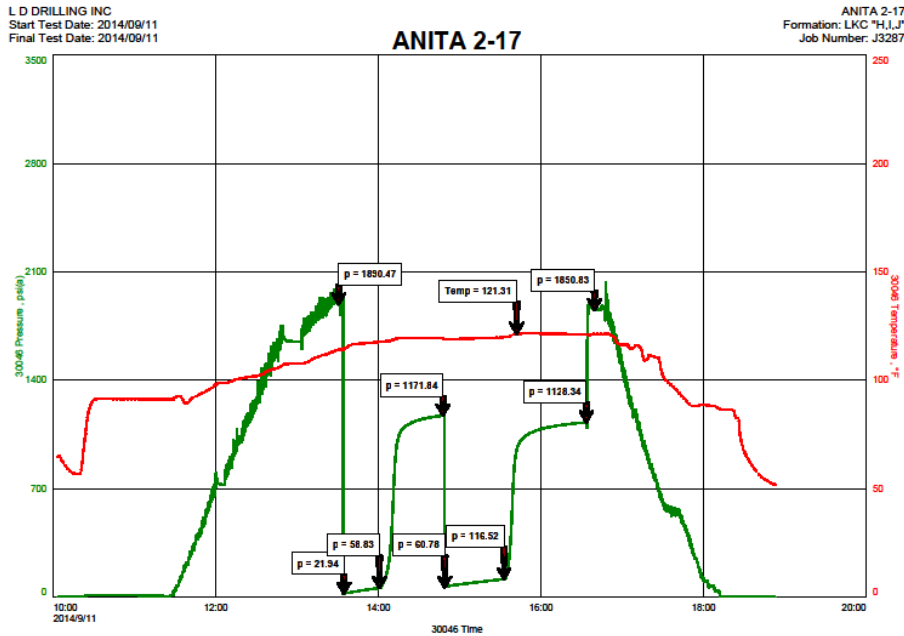
- LANSING "F": 3934-3937, CHERT WITH NS, CALCULATES? PROBABLY NOTHING HERE.
- KANSAS CITY "J": 4051-4054, (DST #1)
- 4063-4065, (DST #1), POOR POROSITY BUT GOOD MICRO.
- KANSAS CITY "K": 4086-4091?, (DST #2), APPEARS TO BE WET, GOOD MICRO.
- KANSAS CITY "L": 4113-4121, (DST #2), FAIR SHOW OIL IN SAMPLES, GOOD MICRO.
- MYRICK STATION: 4295-4298, (DST #4), ONLY 7% POROSITY, GOOD ON MICRO.

RESPECTFULLY SUBMITTED,
LARRY P. FRIEND

DRILLSTEM TESTS

No	Interval	Formation
1	3975 - 4068	KANSAS CITY "H", "I", "J"
2	4067 - 4124	KANSAS CITY "K" + "L"
3	4121 - 4233	PLEASANTON + MARMATON
4	4264 - 4379	MYRICK STATION + FT. SCOTT

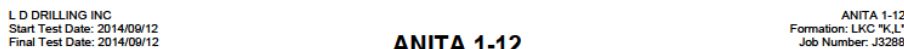
DST #1 CHART



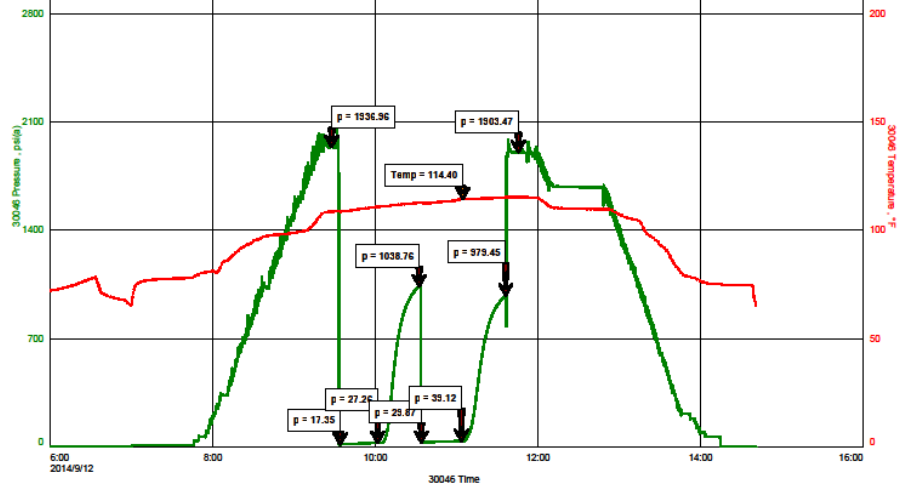
C:\NewTest\Testing\0\Desktop\Drillstem Test\ANITA2-17DST1.Rt 11-Sep-14 Ver

Fast

DST #2 CHART



C:\NewTest\Testing\0\Desktop\Drillstem Test\ANITA1-12DST1.Rt 11-Sep-14 Ver



C:\Users\Testing10\Desktop\ANITA1-12DST3 13-Sep-14 Vnr

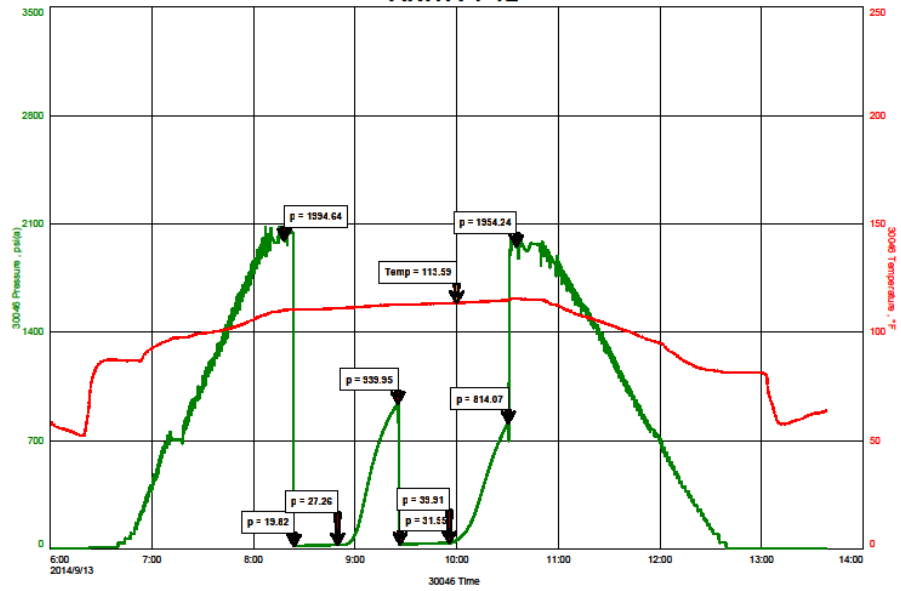
Fast

DST #3 CHART

LD DRILLING INC
Start Test Date: 2014/09/13
Final Test Date: 2014/09/13

ANITA 1-12
Formation: PLEAS.-MARM.
Job Number: J3290

ANITA 1-12

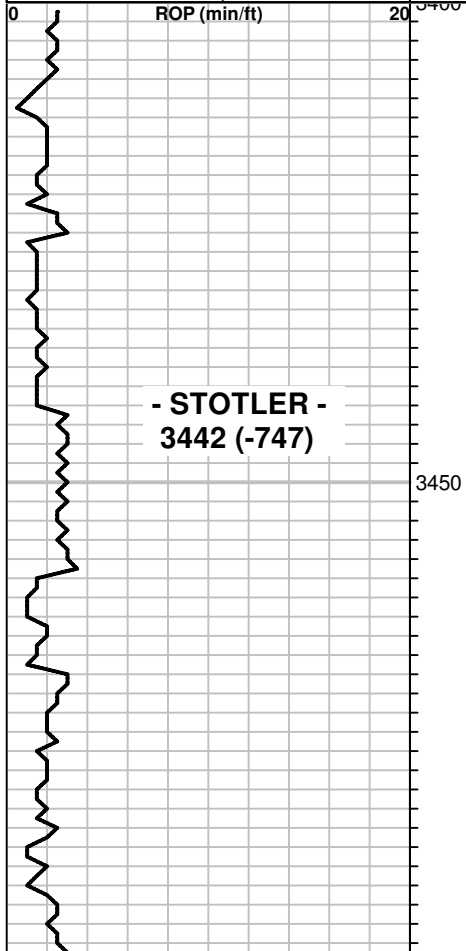


C:\Users\Testing10\Desktop\ANITA1-12DST3 13-Sep-14 Vnr

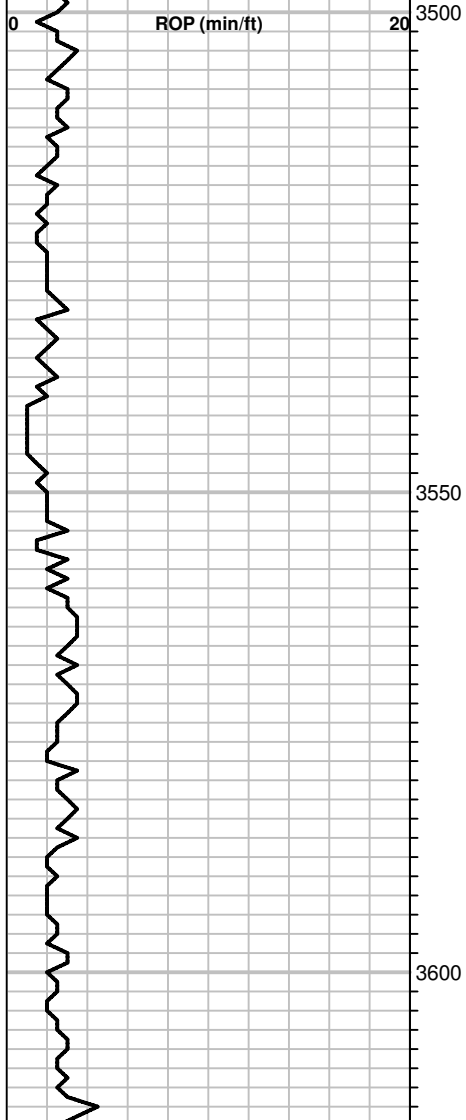
Fast

DST #4 CHART

1:240 Imperial
ROP (min/ft)



ROP (min/ft)



7AM DEPTHS:

9/05/14: MIRU & SPUD
 9/06: 369' WAITING ON CEMENT
 9/07: 1640
 9/08: 2647
 9/09: 3323, MUD UP
 9/10: 3805
 9/11: 4068, DST #1
 9/12: 4124, DST #2
 9/13: 4233, DST #3
 9/14: 4379, DST #4
 9/15: 4487, RTD AT 10:20AM

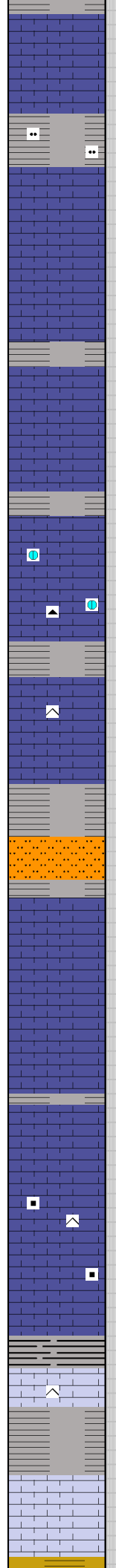
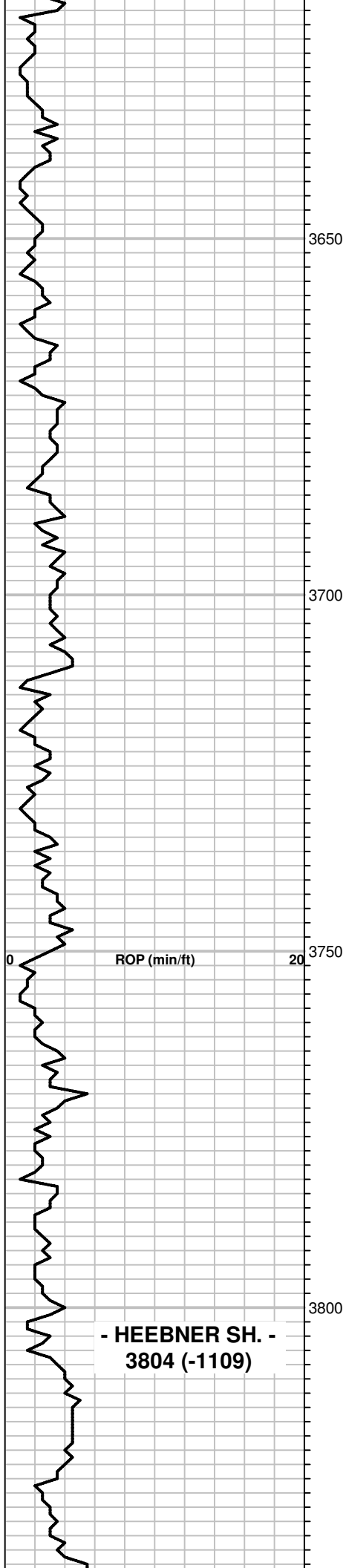
DEV. SURVEYS:

0.5 DEGREES AT 369'
 0.25 DEGREES AT 4068'
 1.00 DEGREES AT 4530'

MUDDER UP AT 3489'.

20: LS, TAN-BRN, VFXLN, SOME SLI. CHTY,
 DSE TO PR. XLN. POR; NS

40: LS, CRM-TAN, FXLN, W/ FR. XLN. POR,
 SOME SLI. CHALKY; SHALE, DK. GRY; NS



60: LS, TAN, V. FOSS. W/ GD. XLN. POR;
SHALE, GRY, GRN, SILTY; NS, NF

80: LS, TAN, FXLN / FN. GRANULAR, W/ GD.
XLN. POR; NS, NF

100: LS, TAN, FXLN / FN. GRANULAR, GD.
XLN. POR; NS, NF AS ABOVE.

10: SHALE, BLK; LS, TAN-BRN, FXLN, SLI.
CHLKY, W/ PR - GD. XLN. POR; NS, NF.

20: LS, TAN, DETRITAL / FOSS, W/ FR - GD.
XLN. POR; NS

30: LS, TAN, FXLN, PR. POR; TR. TAN
DOLOMITE, PR. POR; TR. TAN CHERT; NS

40: LS, CRM-TAN, XLN, CHTY, W/ PR- FR. -
TR. GD. XLN. POR; NS

50: LS, TAN, FXLN, FOSS, W/ PR - FR. XLN.
POR; GRY, LMY SILTSTN AND VARY COL.
SHALE; NS

60: LS, CRM- TAN, FXLN / FN. GRANULAR, FR
- GD. XLN. POR; NS

70: LS, TAN-BRN, FXLN, PR - TR. FR. XLN.
POR; NS

80: LS, TAN, FXLN, W/ FR - GD. XLN. POR; NS,
NF.

90: LS, TAN-BRN, FXLN, FOSS, PR - TR. FR.
XLN. POR; NS, NF.

100: TR. LS, BRN, FXLN, FOSS, W/ FR. - GD.
XLN POR; GRY SHALE; NS

10: LS, TAN, FXLN, SLI. FOSS, CHTY, PR - FR.
XLN. POR; TR. RED- BRN CARBONACEOUS
SPECKS; NS, NF.

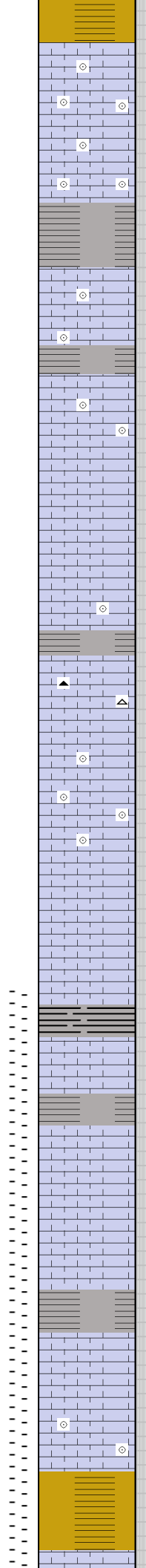
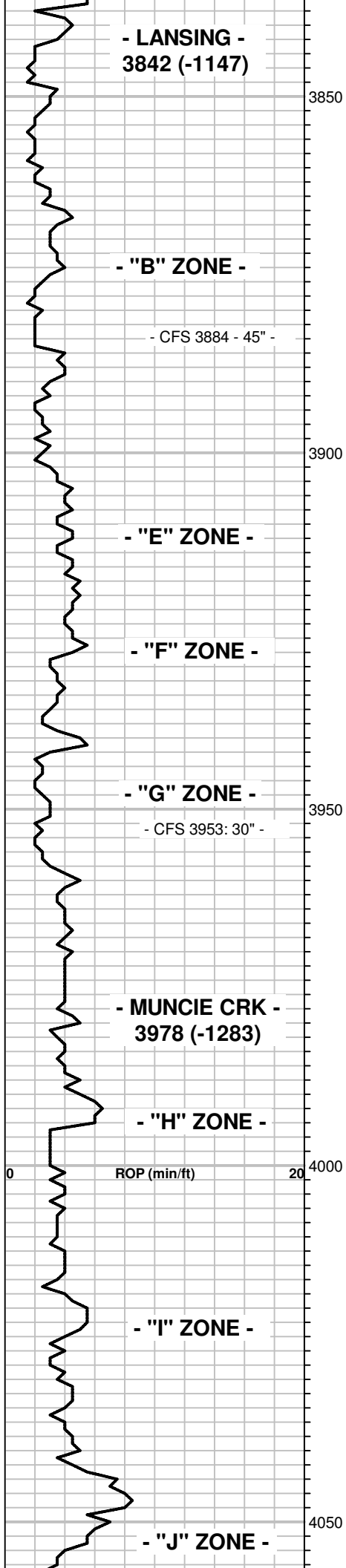
20: SHALE, BLACK, CARB; LS, BRN, VF-FXLN,
FOSS, SLI. CHTY, DSE; NS

30: LS, BRN, VFXLN, SLI. FOSS, MOSTLY PR.
POR; NS

40: LS, CRM-TAN, FXLN, SLI. FOSS, W/ PR -
FR. XLN POR; NS

50: SHALE, GRY; LS, AS ABV; NS

**- HEEBNER SH. -
3804 (-1109)**



60: SHALE, GRY & MAROON; TR. LS, CRM-TAN, V. OOLITIC, W/ PR. - GD. XLN. POR; NS

70: LS, CRM-TAN, OOL./ FOSS, W/ PR - GD. XLN. POR; NS, NF

80: LS, TAN, VF-FXLN; AND TR. LS, BRN, V. OOL (V. FN. OOLITES), W/ PR- FR. XLN. POR; SHALE, GRY & GRN; NS

CIRC: LS, TAN-BRN, V. OOLITIC / FOSS, PR - FR. - TR. GD. XLN. POR & ONLY TR. SPTY. OOLIC - VUG. POR, SOME CALCITE FILL IN POR; NS, NF

10: LS, TAN, FXLN, OOL/ FOSS, W/ PR - GD XLN. POR; NS, NF

20: LS, TAN, VF-FXLN, SOME W/ CALCITE FILL IN POR, PR - TR. FR. XLN. POR; NS

30: LS, AS ABV, TAN-BRN, VF-FXLN, CALCITIC FILL IN POR, MOSTLY PR. POR; NS

40: SHALE, GRY; LS, TAN, VF-FXLN, TR. OOL/ FOSS, PR. XLN. POR, SOME POR. CALCITE FILLED; NS.

50: CHERT, CRM, GRY, BRN; IN LS, TAN, VF-FXLN W/ MOSTLY PR. XLN. POR; NS

CIRC: LS, TAN, OOL/ FOSS, TR. WEATHERED, SLI. CALCITIC W/ FR- GD. XLN. POR; NS, NF

70: LS, GRY, FXLN, SPARRY, FOSS, SLI. CALCITIC, TR. PR. VUG. POR; NS, NF

80: LS, AS ABV W/ PR. XLN. POR; LS, CRM, CHLKY; NS

90: LS, GRY-BRN, VF-FXLN, PR. POR; TR. BLK CARB. SHALE W/ SLI. ODOR, NO OTHER SHOW.

100: LS, BRN, VFXLN, FOSS, PR. POR; ONLY CP. PCS LS, W/ PR. TR. PPT. POR, S-GSFO, DK. TOT. SAT STN, SPTY WK FLUOR, FR. ODOR

10: LS, TAN-BRN, VF-FXLN, TR. FOSS W/ PR - FR. XLN POR; 1 PC. W/ PR. VIS. POR, GD. BLK STN, NFO, SLI. ODOR.

20: LS, TAN-BRN, VFXLN, PR. POR, MUCH WEATHERED, SLI. CHLKY; NS

30: LS, BRN, VFXLN, SLI. FOSS, DSE TO SOME WEATH. SLI. CHLKY; TR. GRY SHALE; NS, NF

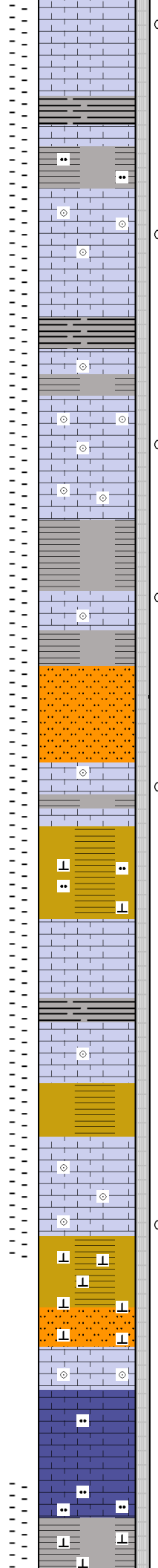
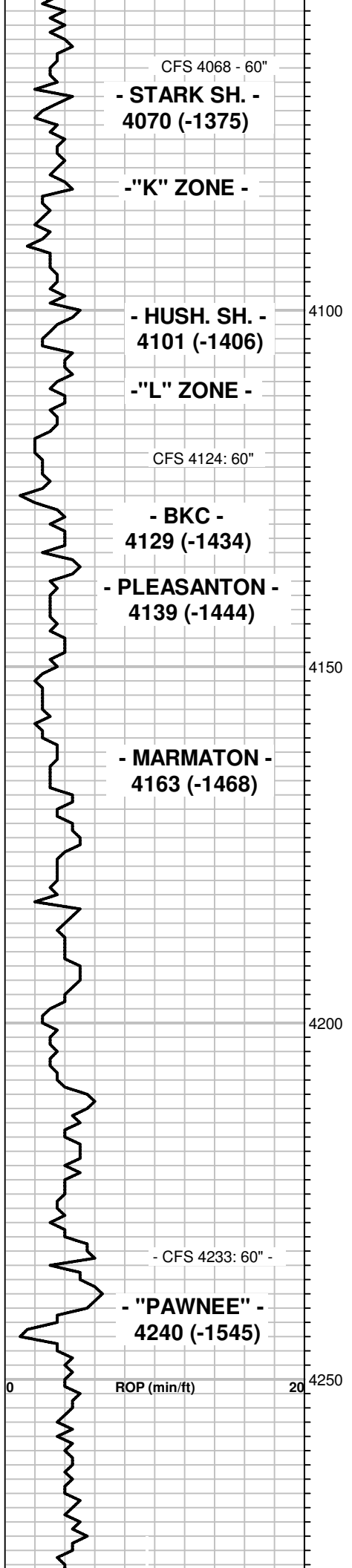
40: TR. LS, BRN, VFXLN, PR. TR. SPTY PPT-VUG. POR, SSFO, PR. SPTY DK. BRN STN, SPTY. BRT. FLUOR, NO ODOR

50: LS, TAN, VF-FXLN, SOME V. OOL./ FOSS, PR - FR. XLN. POR; NS, NF

60: VARY COL. SHALE, SOME STICKY.

MUD @ 3900:
 WT: 9.1
 VIS: 47
 FILTRATE: 8
 CHLOR: 500 PPM
 LCM: 2#

DST #1: 3975 - 4068
KS CTY.: "H", "I", "J"
TIMES: 30-45-45-60
IF: BLOW OFF BTM IN 8"
FF: BLOW OFF BTM IN 4"
NO BLOWBACK
REC: 120' GIP & 240' FLUID
50' SOCGM
(3%O, 40%G, 57%M),
130' SMCGO
(5%M, 45%G, 50%O),
60' MCGO
(22%M, 40%G, 58%O)
IFP: 22-59#, FFP: 61-117#
SIP: 1172-1128#



68 & CIRC: FEW SM. PCS LS W/ PR - TR. FR. PPT - VUG. POR, FSGB, TR. FO, TOT. LT. BRN SAT. STN, FR. SPTY. BRT. FLUOR; AND TR. CRM. CHT. W/ PR. TR. STN, NO ODOR

90: SHALE, BLK, CARB; TR. BRN LS, PR. POR AND TR. BRN, V. LMY SILTSTN.

100: SEV. PCS. LS, TAN, FOSS./ OOL. W/ PR. SPTY. PPT- VUG & XLN POR, ONLY TR. FO, SSGB, FR - GD. LT. BRN. EVEN SAT. STN, GD. FLUOR, FR. ODOR (LOOKS TITE)

10: LS, TAN, VFXLN, DSE TO SOME CRM, SLI. CHLKY; TR. LS, AS ABV W/ SHOW; SHALE, GRY - BLK.

20 & 15" CIRC: SHALE, BLK, GRY, MAROON; LS, DK. BRN, FOSS, TO SOME OOLITIC, PR. XLN. POR; 1 TITE PC LS W/ SHOW AS ABV.

24 CIRC: TR. SM PCS LS, V. OOL./ FOSS (FN-CSE OOLITES), PR - TR. GD. OOLIC. & SOLU. POR, FSFO, FR. EVEN LT. BRN SAT STN, FR. SPTY BRT FLUOR, SOME CALCITE FILL IN POR, FR. ODOR; MUCH CRM CHALK.

50: LS, TAN, VFXLN, SLI. FOSS, DSE; CP. PCS. LS, VFXLN, PR. POR, FR. BRN STN (LOOKS LIKE "K"); CP. PCS. LS, FR. OOLIC POR & SPTY STN (LOOKS LIKE "L"); 1 PC LS, PR-FR. XLN POR. W/ TR. FO&G, DK STN, SLI. ODR

60: GRY, LMY, SILTSTN; LS, TAN, VFXLN, V. OOL./ FOSS, DSE, TR. PR. PPT POR & FR. XLN. POR, TR. FO, LT. SAT. STN, NO ODOR

70: MOSTLY SHALE, GRY & BRN.

80: LS, TAN-BRN, VF-FXLN, MOSTLY DSE - PR POR; 2 SM. PCS LS, TAN, FR. XLN & TR. PR. PPT. POR, SLI. CHLKY, PR. SAT STN, NFO, NO ODOR (FROM ABV?)

90: VARY COL. SHALE; LS, AS ABV, VF-FXLN, DSE - PR. XLN. POR, SLI. FOSS; NS

100: MUCH VARY COL. SHALE; TR. BRN, LMY SILTSTN.

10: SHALE, VARY COL, AND SOME LS, VF-FXLN, DSE - PR. XLN. POR; NS

20: LS, TAN-BRN, VXLN, PR. POR TO MUCH CRM, SLI. CHLKY LS; SHALE, GRY, GRN AND TR. BLK; NS

30: SHALE, VARY COL; LS AS ABV, TR. V. OOLITIC / FOSS., DSE; NS

CIRC.: SOME LS, TAN, V. OOLITIC, DSE TO SOME WEATH. W/ FR. XLN POR, SLI. CHLKY, CP. PCS W/ FSFO, SPTY. DK STN, NO ODOR

50: LS, TAN, V. OOL./ FOSS, DSE TO TR. W/ FR. XLN. POR; SHALE, VARY COL; NS

60: SHALE, VARY COL; SOME BRN, V. LMY SILTSTN; LS, TAN, V. OOL./ FOSS, DSE TO TR. WEATH. W/ FR. XLN. POR; NS

70: LS, BRN, FXLN - FN. GRAN, SOME SLI. SILTY, PR. POR; NS

80: LS AS ABV TO BRN, V. LMY SILTSTN, PR. POR; NS

90: DK. GRY LS, VFXLN TO MOSTLY DK. GRY - BLK, LMY SHALE.

HP: 1890-1857#
MAX TEMP: 124 F.
SEE CHART ABOVE

MUD @ 4068:
 WT: 9.2
 VIS: 58
 FILTRATE: 7.6
 CHLOR: 500
 LCM: 2.5 #

DST #2: 4067-4124
KANSAS CITY "K" & "L"
TIMES: 30-30-30-30
IF: WEAK .25" BLOW.
FF: WEAK .25" BLOW.
REC: 20' OIL SPKD MUD
IFP: 17-27#, FFP: 29-39#
SIP: 1038-979#
HP: 1936-1903#
MAX TEMP: 114 F.
SEE CHART ABOVE

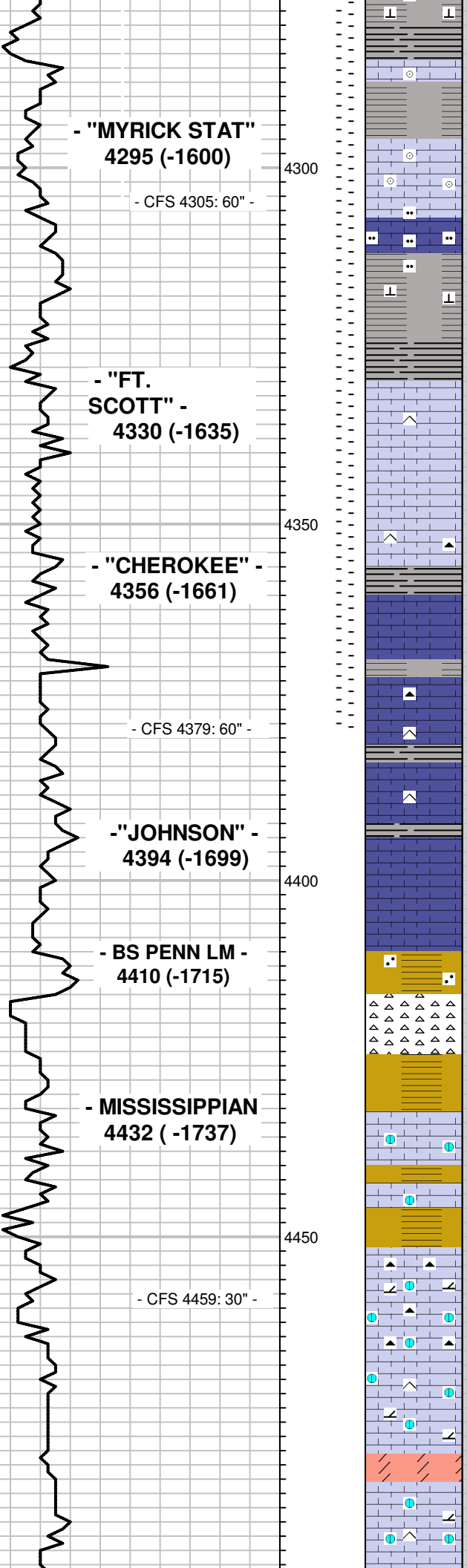
MUD AT 4124:
 WT: 9.3
 VIS: 45
 FILTRATE: 7.6
 CHLOR: 500
 LCM: 2#

DST #3: 4121 - 4233
PLEASANTON & MARM.
TIMES: 30-30-30-30
IF: WEAK 3/8" BLOW.
FF: WEAK 1/8" BLOW
REC: 25' DRLG MUD, NS
IFP: 20-27#, FFP: 32-40#
SIP: 940-814#
HP: 1995-1954#
MAX. TEMP. 114 F.
SEE CHART ABOVE

MUD AT 4233:
 WT: 9.3
 VIS: 49
 FILTRATE: 8
 CHLOR: 500
 LCM: 1#

DST #4: 4264 - 4379
MYRICK STAT./ FT. SCOTT
TIMES: 30-30-30-30
IF: 1" STEADY BLOW
FF: 0.75" STEADY BLOW
REC: 60'SOCM
(5%G, 20%O, 75%M)
IFP: 23-29#, FFP: 30-39#
SIP: 380-241#
HP: 2079-2051#
MAX. TEMP: 118 F.
SEE CHART ABOVE

MUD AT 4379:
 WT: 9.5
 VIS: 46
 FILTRATE: 8.8
 CHLOR: 500
 LCM: 0.5#



100: SHALE, BLK & LS, DK. BRN, VFXLN, FOSS, DSE; NS

05 CIRC: LS, TAN-BRN, V. OOL./ FOSS, DSE TO TR. WEATH. SOFT & TR. CHTY, HD, W/ PR. PPT. POR & FR. XLN. POR, TR. FO, PR. SPTY STN & FLUOR, NO ODOR.

20: SILTSTN, BRN, V. LMY.

30: SHALE, GRY & BLK; LS, BRN, VFXLN TO CRM, SLI. CHLKY; NS

40: SHALE, BLK.

50: LS, TAN-BRN, VFXLN, SLI. FOSS, DSE, TR. CHTY, HD; NS

60: LS, AS ABV TO TR. WEATHERED SLI. CHLKY; NS

70: LS, TAN-BRN, VFXLN, DSE, TR. FOSS, TR. CHTY, SOME SLI. CHLKY; TR. DK. GRY CHT; SHALE, GRY & BLK; NS

79: LS, TAN-BRN, VFXLN, DSE TO MUCH WEATHERED, SLI. CHLKY; NS, NF

79 CIRC: LS, AS ABV; TR. CHERT, BRN; NS, NF.

100: LS, TAN, VF-FXLN, DSE, TR. CHTY TO TR. PR - FR. XLN. POR; SHALE, GRY & BLK; NS

10: BIG INC. SHALE, GRY & BLK; SOME LS, AS ABV; NS

20: LS, BRN, VF-FXLN, DSE TO FR. XLN. POR, MOST IS CRM, CHALKY; NS, NF.

30: SHALE; TR. SST, SILT - FN GRND, CLR, TITE - FRIAB, NON-CALC. CEMENT; NS

40: CHERT, TAN, CRM, ORG, SHP TO TR. WEATHERED; NS

50: LS, BRN, MUSTARD, VF-FXLN, WEATH, SLI. CHLKY, PR - FR. XLN. POR; NS

59: LS, BRN, OLIVE, VF-FXLN, SLI. DETRITAL LOOKING, SLI. WEATH, PR - FR. XLN. POR; SOME VARY COL. SHALE; NS

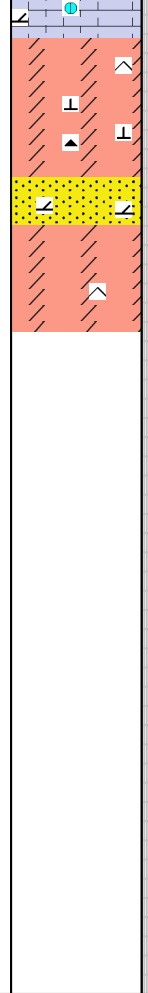
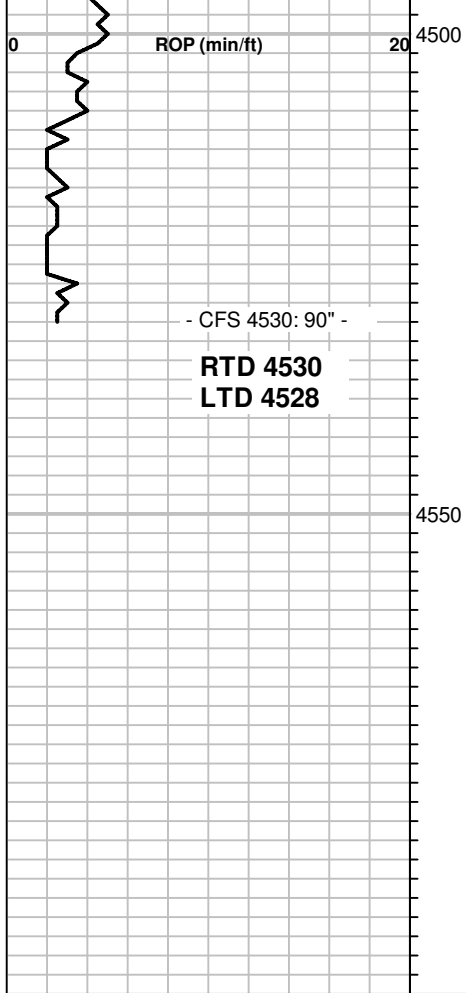
30" CIRC: VARY COL. SHALE; MUCH CHERT, TAN, FOSS; LS, BRN, OLIVE, VF-FXLN, SOME FOSS./ DETRITAL, PR - TR. FR. XLN POR; NS

80: LS, BRN, OLIVE, VF-FXLN, FOSS. / DETRIT. SOME V. CHTY, HD, SOME WEATH, PR- FR. XLN. POR; NS

90: LS, AS ABV, TR. V. OOLITIC, SOME CHTY; NS, NF.

100: LS, FXLN, DETRITAL WITH FOSS, SHALE AND LS. FRAGMENTS, SLI. DOLOMITIC, PR- FR. XLN. POR; BAND OF SOFT DOL. LS, W/ FR. XLN. POR; NS, NF.

10: DET. LS, AS ABV, SLI GLAUC, TR. CHTY, PR-TR. FR. XLN. POR; NS



20: DOLOMITE, TAN-BRN, FXLN, SOME CHTY, PR - FR. XLN. POR; SOME CHT, GRY, SHP; NS

30: DOL. LS, TAB, FXLN, SLI. CHTY, PR. VIS. POR; TR. CHT; SHALE, GRY; NS

30" CIRC: SST, DIRTY GRY, SLI. DOLOMITIC, SILT - MD GRND, SBRD, CLR, V. TITE - TR. FRIAB, PR. POR; SHALE, GRY; NS

60" CIRC: DOL. LS, GRY-TAN, FXLN, SLI. CHTY, PR - FR. XLN. POR; NS

MUD AT 4530:
 WT: 9.3
 VIS: 57
 FILTRATE: 8.8
 CHLOR: 500
 LCM: 1#