



DRILL STEM TEST REPORT

Prepared For: **American Warrior Inc.**

PO Box 399
Garden City KS 67846

ATTN: Adam Folk

Tempero #7-23

23-17s-14w Barton ,KS

Start Date: 2014.08.10 @ 18:00:00

End Date: 2014.08.11 @ 01:44:45

Job Ticket #: 53959 DST #: 1

Trilobite Testing, Inc
1515 Commerce Parkway Hays, KS 67601
ph: 785-625-4778 fax: 785-625-5620

Printed: 2014.08.12 @ 17:35:54



TRILOBITE TESTING, INC

DRILL STEM TEST REPORT

American Warrior Inc.
 PO Box 399
 Garden City KS 67846
 ATTN: Adam Folk

23-17s-14w Barton ,KS
Temporo #7-23
 Job Ticket: 53959 **DST#: 1**
 Test Start: 2014.08.10 @ 18:00:00

GENERAL INFORMATION:

Formation: **KC "G"**
 Deviated: No Whipstock: ft (KB)
 Time Tool Opened: 20:29:15
 Time Test Ended: 01:44:45
 Interval: **3234.00 ft (KB) To 3262.00 ft (KB) (TVD)**
 Total Depth: 3262.00 ft (KB) (TVD)
 Hole Diameter: 7.88 inches Hole Condition:
 Test Type: Conventional Bottom Hole (Initial)
 Tester: Brett Dickinson
 Unit No: 59
 Reference Elevations: 1929.00 ft (KB)
 1921.00 ft (CF)
 KB to GR/CF: 8.00 ft

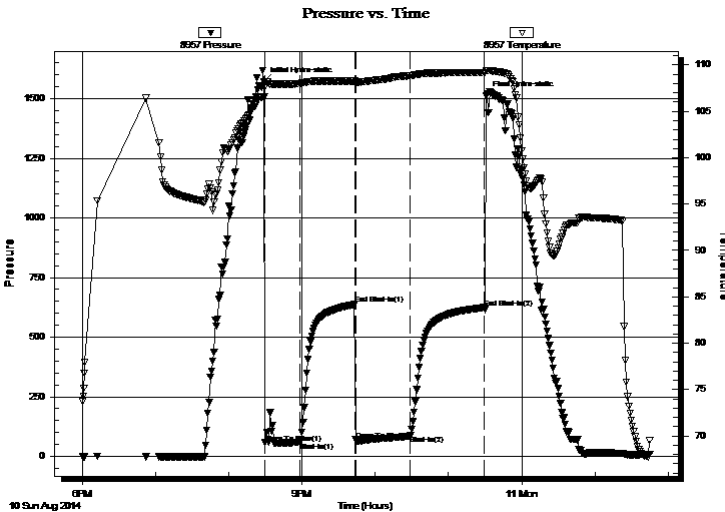
Serial #: 8957

Outside

Press@RunDepth: 87.47 psig @ 3235.00 ft (KB) Capacity: 8000.00 psig
 Start Date: 2014.08.10 End Date: 2014.08.11 Last Calib.: 2014.08.10
 Start Time: 18:00:05 End Time: 01:44:44 Time On Btm: 2014.08.10 @ 20:28:30
 Time Off Btm: 2014.08.10 @ 23:30:45

TEST COMMENT: IF- 9 1/2in blow
 IS- No blow
 FF- BOB in 15min
 FS- 1/4in blow

PRESSURE SUMMARY



Time (Min.)	Pressure (psig)	Temp (deg F)	Annotation
0	1572.48	106.61	Initial Hydro-static
1	56.60	106.56	Open To Flow (1)
30	59.66	108.01	Shut-In(1)
75	637.47	108.27	End Shut-In(1)
76	65.40	108.13	Open To Flow (2)
121	87.47	108.85	Shut-In(2)
181	624.11	109.17	End Shut-In(2)
183	1511.37	109.42	Final Hydro-static

Recovery

Length (ft)	Description	Volume (bbl)
60.00	V SOMCW 2%O 30%M 68%W	0.84
95.00	SOCM 10%O 90%M	1.33
0.00	390ft GIP	0.00

Gas Rates

Choke (inches)	Pressure (psig)	Gas Rate (Mcf/d)



TRILOBITE TESTING, INC.

DRILL STEM TEST REPORT

American Warrior Inc.
 PO Box 399
 Garden City KS 67846
 ATTN: Adam Folk

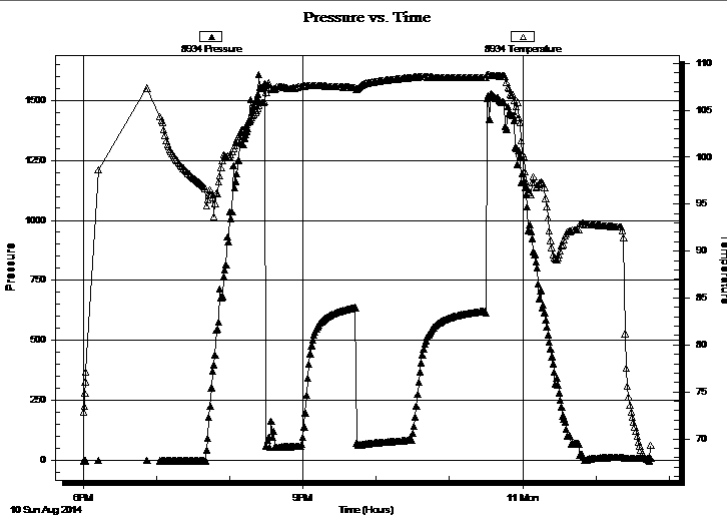
23-17s-14w Barton , KS
Temporo #7-23
 Job Ticket: 53959 **DST#: 1**
 Test Start: 2014.08.10 @ 18:00:00

GENERAL INFORMATION:

Formation:	KC "G"		Test Type:	Conventional Bottom Hole (Initial)
Deviated:	No Whipstock:	ft (KB)	Tester:	Brett Dickinson
Time Tool Opened:	20:29:15		Unit No:	59
Time Test Ended:	01:44:45		Reference Elevations:	1929.00 ft (KB)
Interval:	3234.00 ft (KB) To 3262.00 ft (KB) (TVD)			1921.00 ft (CF)
Total Depth:	3262.00 ft (KB) (TVD)		KB to GR/CF:	8.00 ft
Hole Diameter:	7.88 inches		Hole Condition:	

Serial #: 8934	Inside				
Press@RunDepth:	psig @	3235.00 ft (KB)	Capacity:	8000.00 psig	
Start Date:	2014.08.10	End Date:	2014.08.11	Last Calib.:	2014.08.10
Start Time:	18:00:05	End Time:	01:44:44	Time On Btm:	
				Time Off Btm:	

TEST COMMENT: IF- 9 1/2in blow
 IS- No blow
 FF- BOB in 15min
 FS- 1/4in blow



PRESSURE SUMMARY

Time (Min.)	Pressure (psig)	Temp (deg F)	Annotation

Recovery

Length (ft)	Description	Volume (bbl)
60.00	V SOMCW 2%O 30%M 68%W	0.84
95.00	SOCM 10%O 90%M	1.33
0.00	390ft GIP	0.00

Gas Rates

	Choke (inches)	Pressure (psig)	Gas Rate (Mcf/d)



**TRILOBITE
TESTING, INC**

DRILL STEM TEST REPORT

TOOL DIAGRAM

American Warrior Inc.

23-17s-14w Barton ,KS

PO Box 399
Garden City KS 67846

Tempero #7-23

Job Ticket: 53959

DST#: 1

ATTN: Adam Folk

Test Start: 2014.08.10 @ 18:00:00

Tool Information

Drill Pipe:	Length: 3225.00 ft	Diameter: 3.80 inches	Volume: 45.24 bbl	Tool Weight:	2000.00 lb
Heavy Wt. Pipe:	Length: 0.00 ft	Diameter: 2.70 inches	Volume: 0.00 bbl	Weight set on Packer:	25000.00 lb
Drill Collar:	Length: 0.00 ft	Diameter: 2.25 inches	Volume: 0.00 bbl	Weight to Pull Loose:	45000.00 lb
			<u>Total Volume: 45.24 bbl</u>	Tool Chased	15.00 ft
Drill Pipe Above KB:	11.00 ft			String Weight: Initial	22000.00 lb
Depth to Top Packer:	3234.00 ft			Final	23000.00 lb
Depth to Bottom Packer:	ft				
Interval between Packers:	28.00 ft				
Tool Length:	48.00 ft				
Number of Packers:	2	Diameter: 6.75 inches			

Tool Comments:

Tool Description

Tool Description	Length (ft)	Serial No.	Position	Depth (ft)	Accum. Lengths
Shut In Tool	5.00			3219.00	
Hydraulic tool	5.00			3224.00	
Packer	5.00			3229.00	20.00 Bottom Of Top Packer
Packer	5.00			3234.00	
Stubb	1.00			3235.00	
Recorder	0.00	8934	Inside	3235.00	
Recorder	0.00	8957	Outside	3235.00	
Perforations	24.00			3259.00	
Bullnose	3.00			3262.00	28.00 Bottom Packers & Anchor
Total Tool Length:	48.00				



**TRILOBITE
TESTING, INC**

DRILL STEM TEST REPORT

FLUID SUMMARY

American Warrior Inc.

23-17s-14w Barton ,KS

PO Box 399
Garden City KS 67846

Tempero #7-23

Job Ticket: 53959

DST#: 1

ATTN: Adam Folk

Test Start: 2014.08.10 @ 18:00:00

Mud and Cushion Information

Mud Type: Gel Chem

Cushion Type:

Oil API:

deg API

Mud Weight: 9.00 lb/gal

Cushion Length:

ft

Water Salinity:

54000 ppm

Viscosity: 53.00 sec/qt

Cushion Volume:

bbbl

Water Loss: 9.19 in³

Gas Cushion Type:

Resistivity: ohm.m

Gas Cushion Pressure:

psig

Salinity: 4600.00 ppm

Filter Cake: inches

Recovery Information

Recovery Table

Length ft	Description	Volume bbl
60.00	VSOMCW 2%O 30%M 68%W	0.842
95.00	SOCM 10%O 90%M	1.333
0.00	390ft GIP	0.000

Total Length: 155.00 ft

Total Volume: 2.175 bbl

Num Fluid Samples: 0

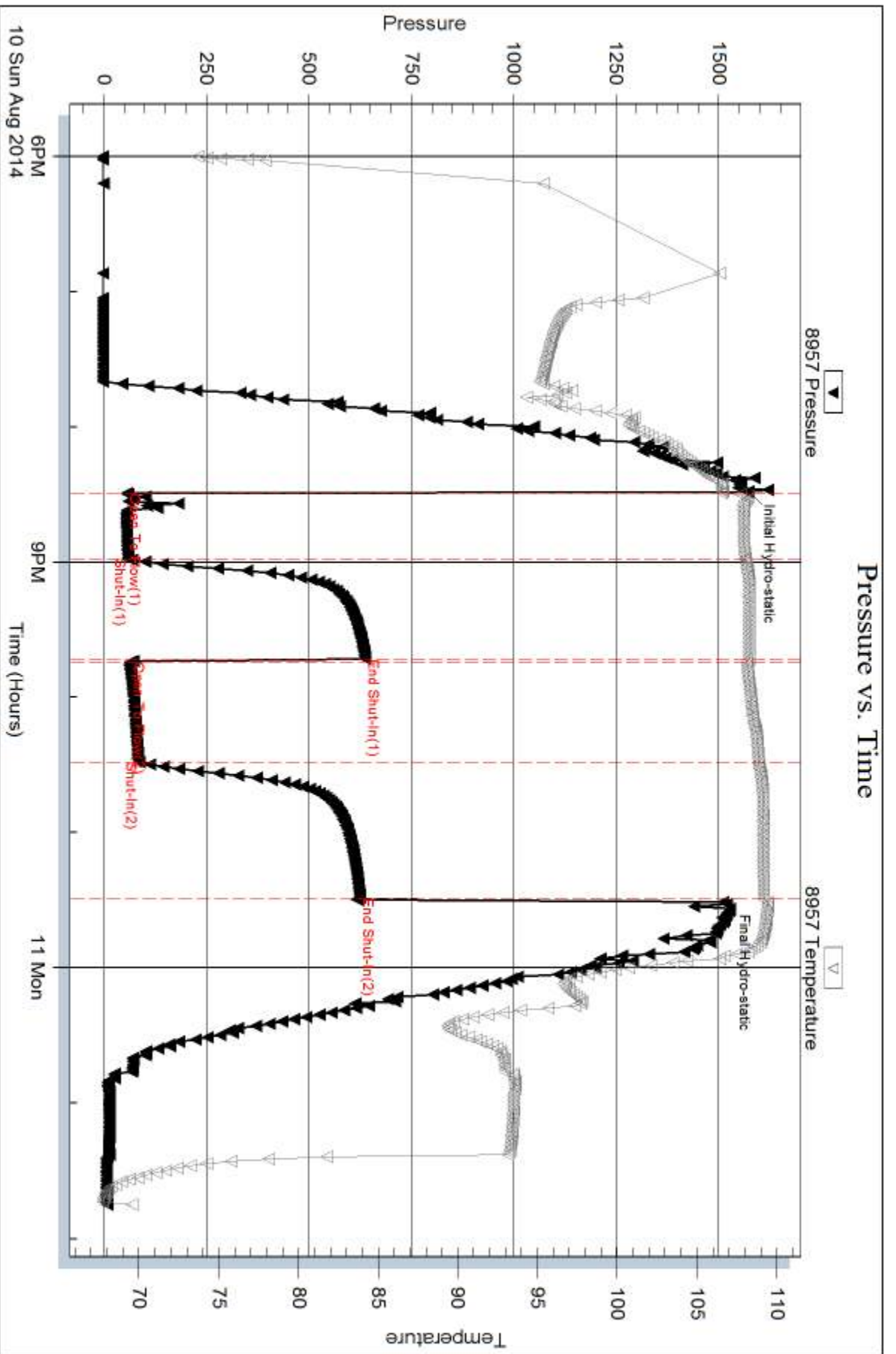
Num Gas Bombs: 0

Serial #:

Laboratory Name:

Laboratory Location:

Recovery Comments:



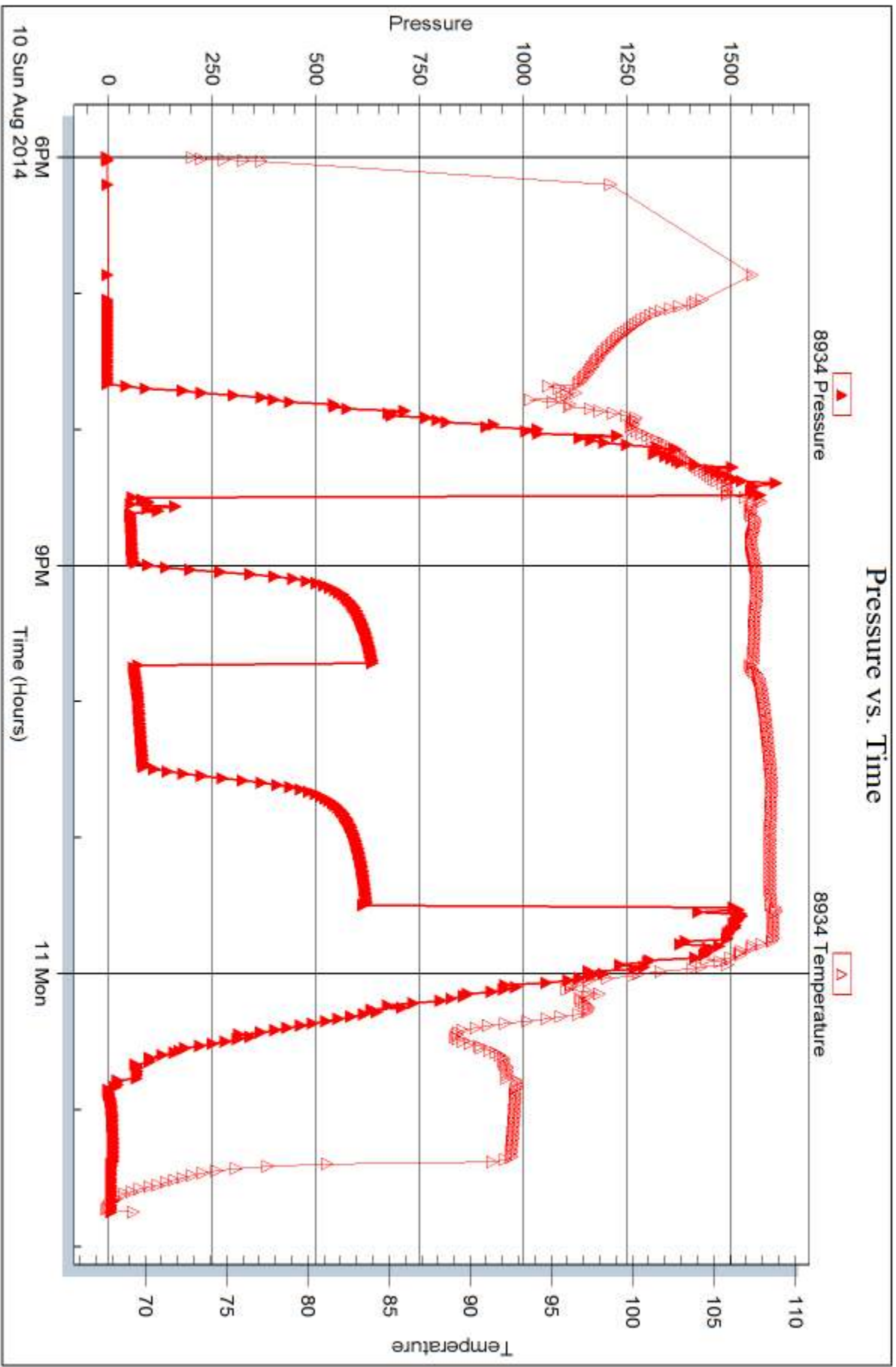
Serial #: 8934

Inside

American Warrior Inc.

Tempero #7-23

DST Test Number: 1



Triobite Testing, Inc

Ref. No: 53959

Printed: 2014.08.12 @ 17:36:36



DRILL STEM TEST REPORT

Prepared For: **American Warrior Inc.**

PO Box 399
Garden City KS 67846

ATTN: Adam Folk

Tempero #7-23

23-17s-14w Barton ,KS

Start Date: 2014.08.11 @ 22:15:00

End Date: 2014.08.12 @ 04:37:00

Job Ticket #: 53960 DST #: 2

Trilobite Testing, Inc
1515 Commerce Parkway Hays, KS 67601
ph: 785-625-4778 fax: 785-625-5620

Printed: 2014.08.12 @ 17:29:53



TRILOBITE TESTING, INC

DRILL STEM TEST REPORT

American Warrior Inc.
 PO Box 399
 Garden City KS 67846
 ATTN: Adam Folk

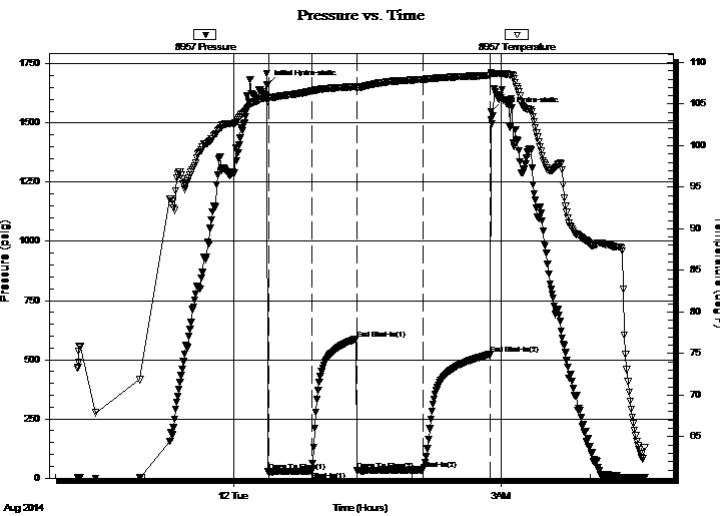
23-17s-14w Barton ,KS
Temporo #7-23
 Job Ticket: 53960 **DST#: 2**
 Test Start: 2014.08.11 @ 22:15:00

GENERAL INFORMATION:

Formation: **BKC -Arbuckle**
 Deviated: No Whipstock: ft (KB)
 Time Tool Opened: 00:23:30
 Time Test Ended: 04:37:00
 Interval: **3355.00 ft (KB) To 3435.00 ft (KB) (TVD)**
 Total Depth: 3355.00 ft (KB) (TVD)
 Hole Diameter: 7.88 inches Hole Condition: Fair
 Test Type: Conventional Bottom Hole (Reset)
 Tester: Brett Dickinson
 Unit No: 59
 Reference Elevations: 1929.00 ft (KB)
 1921.00 ft (CF)
 KB to GR/CF: 8.00 ft

Serial #: 8957 Outside
 Press@RunDepth: 36.39 psig @ 3359.00 ft (KB) Capacity: 8000.00 psig
 Start Date: 2014.08.11 End Date: 2014.08.12 Last Calib.: 2014.08.12
 Start Time: 22:15:05 End Time: 04:36:59 Time On Btm: 2014.08.12 @ 00:22:45
 Time Off Btm: 2014.08.12 @ 02:53:30

TEST COMMENT: IF-1" blow
 IS-No blow
 FF-Weak surface Blow
 FS-No blow



PRESSURE SUMMARY

Time (Min.)	Pressure (psig)	Temp (deg F)	Annotation
0	1661.73	105.82	Initial Hydro-static
1	26.99	105.62	Open To Flow (1)
30	30.31	106.54	Shut-In(1)
60	589.06	107.09	End Shut-In(1)
61	33.75	106.86	Open To Flow (2)
105	36.39	107.96	Shut-In(2)
150	522.16	108.43	End Shut-In(2)
151	1549.03	108.69	Final Hydro-static

Recovery

Length (ft)	Description	Volume (bbl)
30.00	OS Mud	0.42

* Recovery from multiple tests

Gas Rates

Choke (inches)	Pressure (psig)	Gas Rate (Mcf/d)



**TRILOBITE
TESTING, INC**

DRILL STEM TEST REPORT

TOOL DIAGRAM

American Warrior Inc.

23-17s-14w Barton ,KS

PO Box 399
Garden City KS 67846

Tempero #7-23

Job Ticket: 53960

DST#: 2

ATTN: Adam Folk

Test Start: 2014.08.11 @ 22:15:00

Tool Information

Drill Pipe:	Length: 3356.00 ft	Diameter: 3.80 inches	Volume: 47.08 bbl	Tool Weight:	2000.00 lb
Heavy Wt. Pipe:	Length: 0.00 ft	Diameter: 2.70 inches	Volume: 0.00 bbl	Weight set on Packer:	25000.00 lb
Drill Collar:	Length: 0.00 ft	Diameter: 2.25 inches	Volume: 0.00 bbl	Weight to Pull Loose:	40000.00 lb
			<u>Total Volume: 47.08 bbl</u>	Tool Chased	0.00 ft
Drill Pipe Above KB:	21.00 ft			String Weight: Initial	26000.00 lb
Depth to Top Packer:	3355.00 ft			Final	26000.00 lb
Depth to Bottom Packer:	ft				
Interval between Packers:	80.00 ft				
Tool Length:	100.00 ft				
Number of Packers:	2	Diameter: 6.75 inches			
Tool Comments:					

Tool Description	Length (ft)	Serial No.	Position	Depth (ft)	Accum. Lengths
------------------	-------------	------------	----------	------------	----------------

Shut In Tool	5.00			3340.00	
Hydraulic tool	5.00			3345.00	
Packer	5.00			3350.00	20.00 Bottom Of Top Packer
Packer	5.00			3355.00	
Stubb	1.00			3356.00	
Perforations	2.00			3358.00	
Change Over Sub	1.00			3359.00	
Recorder	0.00	8934	Inside	3359.00	
Recorder	0.00	8957	Outside	3359.00	
Drill Pipe	62.00			3421.00	
Change Over Sub	1.00			3422.00	
Perforations	10.00			3432.00	
Bullnose	3.00			3435.00	80.00 Bottom Packers & Anchor

Total Tool Length: 100.00



**TRILOBITE
TESTING, INC**

DRILL STEM TEST REPORT

FLUID SUMMARY

American Warrior Inc.

23-17s-14w Barton ,KS

PO Box 399
Garden City KS 67846

Tempero #7-23

Job Ticket: 53960

DST#: 2

ATTN: Adam Folk

Test Start: 2014.08.11 @ 22:15:00

Mud and Cushion Information

Mud Type: Gel Chem

Cushion Type:

Oil API:

deg API

Mud Weight: 9.00 lb/gal

Cushion Length:

ft

Water Salinity:

ppm

Viscosity: 53.00 sec/qt

Cushion Volume:

bbbl

Water Loss: 9.18 in³

Gas Cushion Type:

Resistivity: ohm.m

Gas Cushion Pressure:

psig

Salinity: 4600.00 ppm

Filter Cake: inches

Recovery Information

Recovery Table

Length ft	Description	Volume bbl
30.00	OS Mud	0.421

Total Length: 30.00 ft Total Volume: 0.421 bbl

Num Fluid Samples: 0

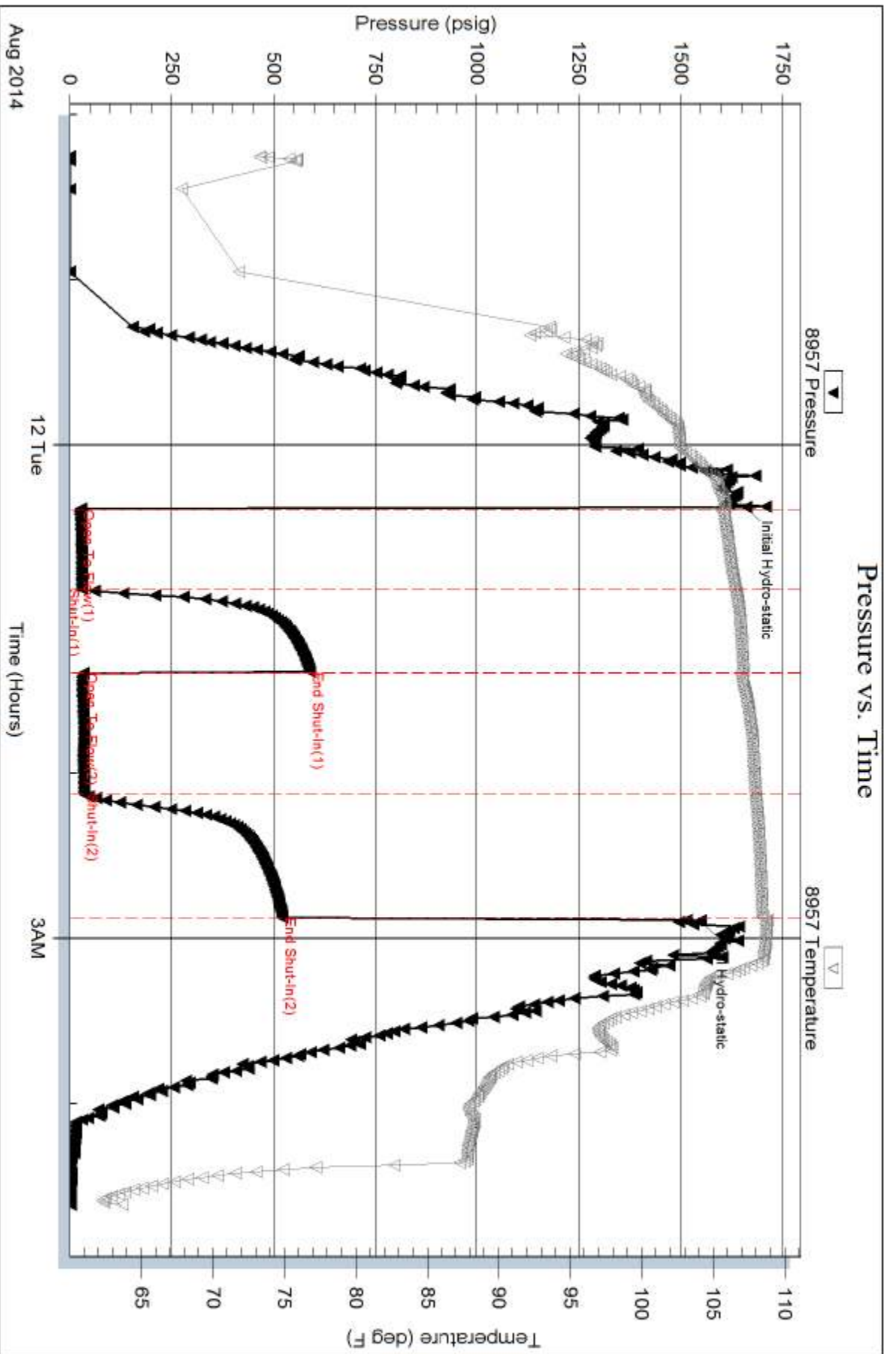
Num Gas Bombs: 0

Serial #:

Laboratory Name:

Laboratory Location:

Recovery Comments:



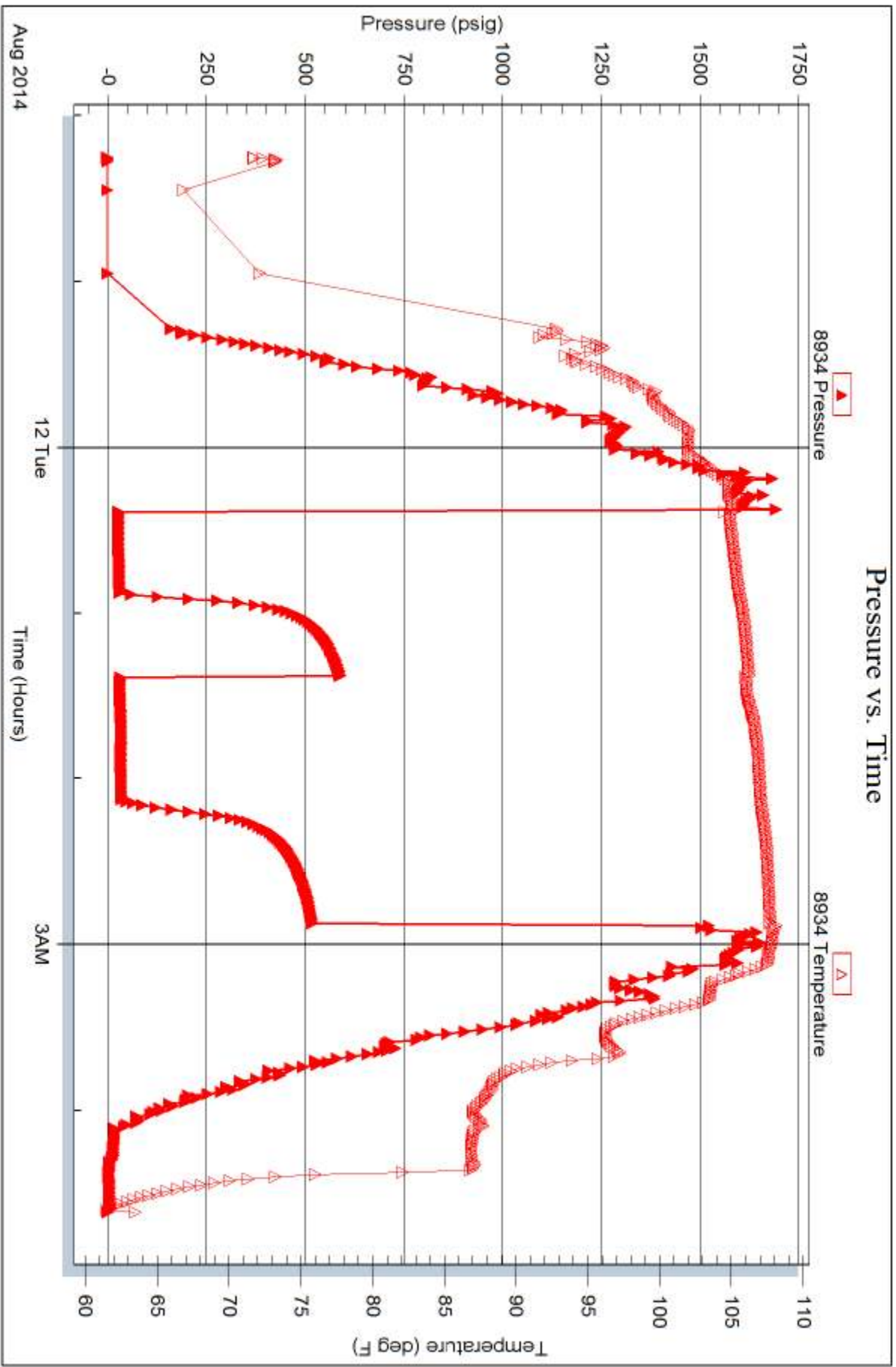
Serial #: 8934

Inside

American Warrior Inc.

Temporo #7-23

DST Test Number: 2





TRILOBITE TESTING INC.

1515 Commerce Parkway • Hays, Kansas 67601

Test Ticket

NO. 53959

Well Name & No. Tempero #7-23 Test No. 1 Date 8/10/14
 Company American Warrior, Inc. Elevation 1929 KB 1921 GL
 Address PO Box 399 Garden City KS 67846
 Co. Rep / Geo. Adam Folk Rig Duke #8
 Location: Sec. 23 Twp. 17 Rge. 14 Co. Barton State KS

Interval Tested 3234-3262 Zone Tested KC "6"
 Anchor Length 28 Drill Pipe Run _____ Mud Wt. 9.2
 Top Packer Depth 3229 Drill Collars Run — Vis 53
 Bottom Packer Depth 3234 Wt. Pipe Run — WL 9.2
 Total Depth 3762 Chlorides 4,600 ppm System LCM _____

Blow Description IF - 9 1/2 in blow
ISI - No blow
FF - BOB in 15 min
FSI - 1/4 in blow

Rec	Feet of	%gas	%oil	%water	%mud
<u>95</u>	<u>SOCM</u>	<u>10</u>		<u>90</u>	
<u>60</u>	<u>visomck</u>	<u>2</u>	<u>68</u>	<u>30</u>	
	<u>390ft GIP</u>				

Rec Total 155 BHT 109 Gravity _____ API RW 15 @ 70 °F Chlorides 34000 ppm
 (A) Initial Hydrostatic 1,572 Test 1150 T-On Location 17:20
 (B) First Initial Flow 57 Jars _____ T-Started 18:00
 (C) First Final Flow 60 Safety Joint _____ T-Open 20:30
 (D) Initial Shut-In 637 Circ Sub _____ T-Pulled 23:30
 (E) Second Initial Flow 65 Hourly Standby _____ T-Out 1:45
 (F) Second Final Flow 87 Mileage 94rt 145.70
 (G) Final Shut-In 624 Sampler _____
 (H) Final Hydrostatic 1,511 Straddle _____

Initial Open 30 Ruined Shale Packer _____
 Initial Shut-In 45 Ruined Packer _____
 Final Flow 45 Extra Copies _____
 Final Shut-In 60 Extra Recorder _____ Sub Total 0
 Day Standby _____ Total 1295.70
 Accessibility _____ MP/DST Disc't _____
 Sub Total 1295.70

Approved By _____ Our Representative Brett D. ...

Trilobite Testing Inc. shall not be liable for damaged of any kind of the property or personnel of the one for whom a test is made, or for any loss suffered or sustained, directly or indirectly, through the use of its equipment, or its statements or opinion concerning the results of any test, tools lost or damaged in the hole shall be paid for at cost by the party for whom the test is made.



TRILOBITE TESTING INC.

1515 Commerce Parkway • Hays, Kansas 67601

Test Ticket

NO. 53960

Well Name & No. Tempero #7-23 Test No. 2 Date 8/16/14
 Company American Warrior, Inc. Elevation 1929 KB 1921 GL _____
 Address _____
 Co. Rep / Geo. Adam Folk Rig Duke #8
 Location: Sec. 23 Twp. 17 Rge. 14 Co. Barton State KS

Interval Tested 3355-3435 Zone Tested BKC-Arb
 Anchor Length 80 Drill Pipe Run _____ Mud Wt. _____
 Top Packer Depth 3350 Drill Collars Run _____ Vis _____
 Bottom Packer Depth 3355 Wt. Pipe Run _____ WL _____
 Total Depth 3435 Chlorides _____ ppm System LCM _____

Blow Description IF - 1 in blow
FSI - No blow
FF - surface blow
FSI - No blow

Rec	Feet of	%gas	%oil	%water	%mud
<u>30</u>	<u>25 25</u> <u>Mud</u>				
Rec	Feet of	%gas	%oil	%water	%mud
Rec	Feet of	%gas	%oil	%water	%mud
Rec	Feet of	%gas	%oil	%water	%mud
Rec	Feet of	%gas	%oil	%water	%mud

Rec Total 30 BHT 108 Gravity _____ API RW _____ @ _____ °F Chlorides _____ ppm

(A) Initial Hydrostatic 1,662 Test 1150 T-On Location 22:10
 (B) First Initial Flow 27 Jars 250 T-Started 22:15
 (C) First Final Flow 30 Safety Joint 75 T-Open 00:23
 (D) Initial Shut-In 589 Circ Sub _____ T-Pulled 2:53
 (E) Second Initial Flow 34 Hourly Standby _____ T-Out 4:35
 (F) Second Final Flow 36 Mileage 94rT 145.70 Comments _____
 (G) Final Shut-In 322 Sampler _____
 (H) Final Hydrostatic 6549 Straddle _____ Ruined Shale Packer _____

Initial Open 30 Shale Packer _____ Ruined Packer _____
 Initial Shut-In 30 Extra Packer _____ Extra Copies _____
 Final Flow 45 Extra Recorder _____ Sub Total 0
 Final Shut-In 45 Day Standby _____ Total 1620.70
 Accessibility _____ MP/DST Disc't _____
 Sub Total 1620.70

Approved By _____ Our Representative But Dan

Trilobite Testing Inc. shall not be liable for damaged of any kind of the property or personnel of the one for whom a test is made, or for any loss suffered or sustained, directly or indirectly, through the use of its equipment, or its statements or opinion concerning the results of any test, tools lost or damaged in the hole shall be paid for at cost by the party for whom the test is made.