



Fall & Associates
 Stake and Elevation Service
 719 W. 5th Street
 P.O. Box 404
 Concordia, KS. 66901
 1-800-536-2821

Date 9-30-14

Invoice Number 0926141

FORESTAR PETROLEUM CORP.
 Operator

1-24
 Number

St. John
 Farm Name

Rawlins-KS
 County-State

24 1s 35w
 S F R

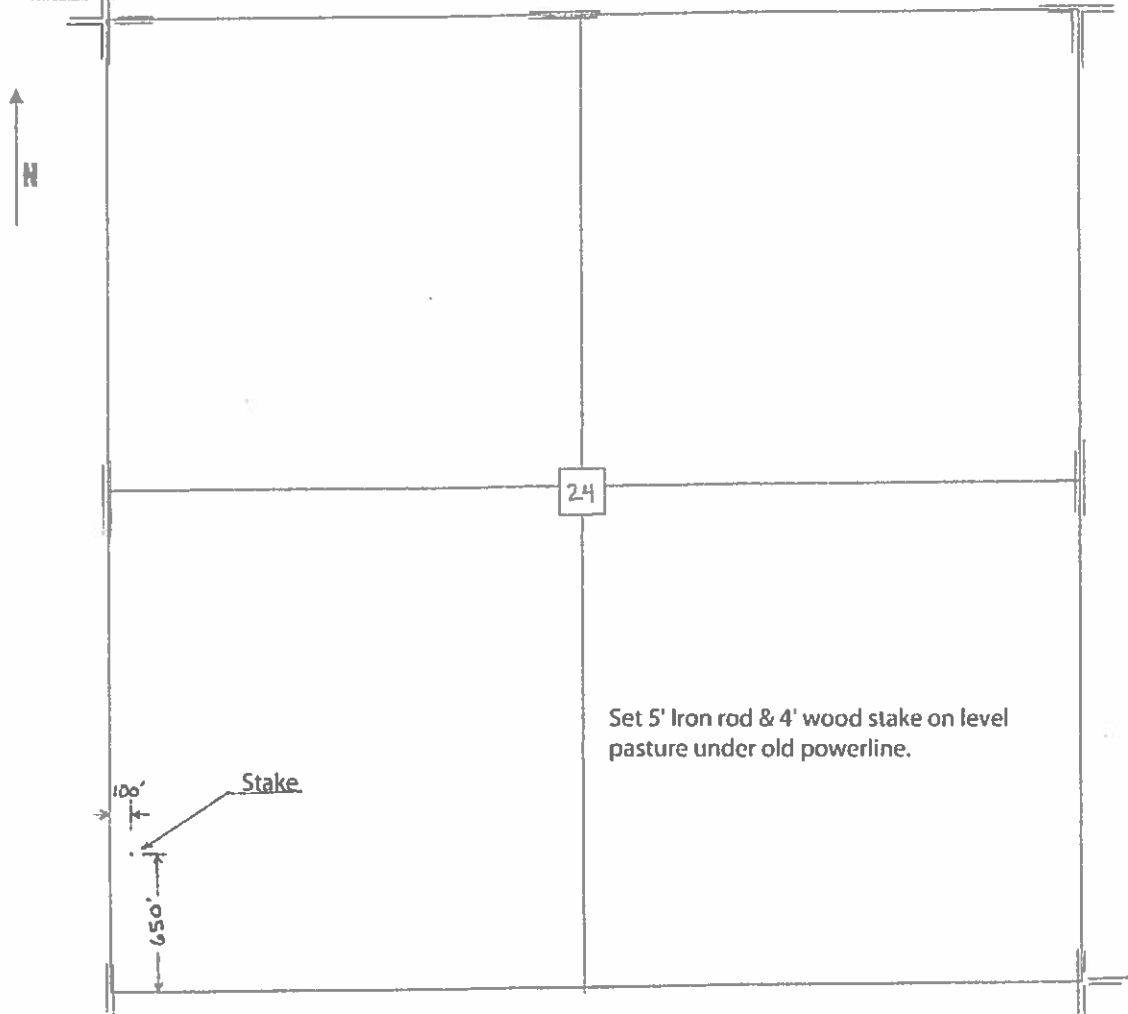
650'FSL 100'FWL
 Location

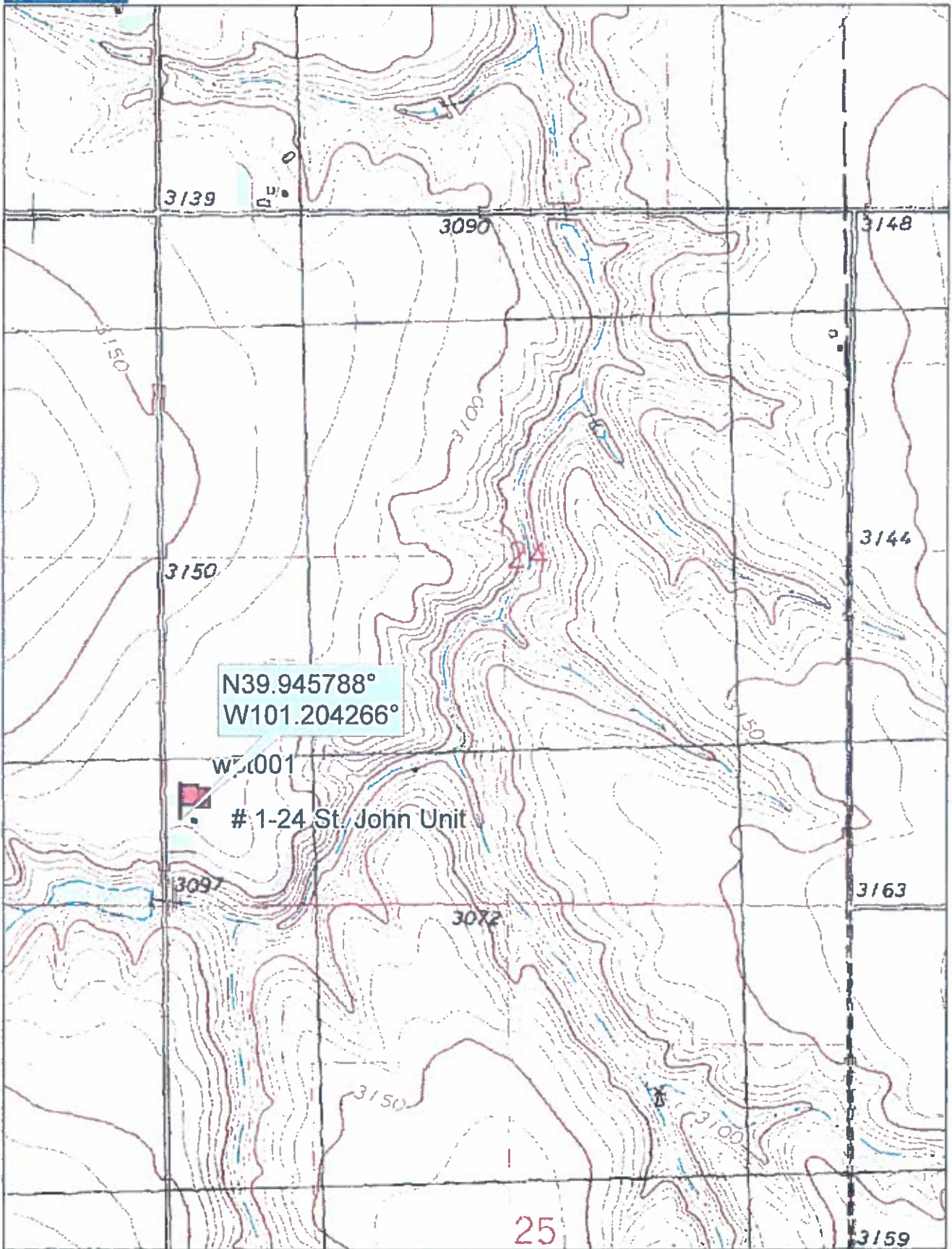
Forestar Petroleum Corp.
 1801 Broadway
 Suite 600
 Denver, CO. 80202

Elevation 3118 Gr.

Ordered By: Laurie

Scale 1"=1000'





Data use subject to license.

© DeLorme, Topo North America™ 9.

www.delorme.com

