



## DRILL STEM TEST REPORT

Prepared For: **American Warrior, Inc**

PO Box 399  
Garden City, KS 67846

ATTN: Jim Musgrove

### **Tempero #8-23**

#### **23-17s-14w Barton,KS**

Start Date: 2014.08.17 @ 18:35:00

End Date: 2014.08.18 @ 02:07:00

Job Ticket #: 58733                      DST #: 1

Trilobite Testing, Inc  
1515 Commerce Parkway Hays, KS 67601  
ph: 785-625-4778 fax: 785-625-5620

Printed: 2014.08.21 @ 14:38:24



**TRILOBITE  
TESTING, INC**

# DRILL STEM TEST REPORT

American Warrior, Inc  
 PO Box 399  
 Garden City, KS 67846  
 ATTN: Jim Musgrove

**23-17s-14w Barton,KS**

**Temporo #8-23**

Job Ticket: 58733      **DST#: 1**  
 Test Start: 2014.08.17 @ 18:35:00

## GENERAL INFORMATION:

Formation: **LKC "D-G"**  
 Deviated: No Whipstock: ft (KB)  
 Time Tool Opened: 21:45:30  
 Time Test Ended: 02:07:00  
 Interval: **3194.00 ft (KB) To 3239.00 ft (KB) (TVD)**  
 Total Depth: 3239.00 ft (KB) (TVD)  
 Hole Diameter: 7.88 inches Hole Condition: Fair  
 Test Type: Conventional Bottom Hole (Initial)  
 Tester: Phillip Gage  
 Unit No: 62  
 Reference Elevations: 1913.00 ft (KB)  
 1905.00 ft (CF)  
 KB to GR/CF: 8.00 ft

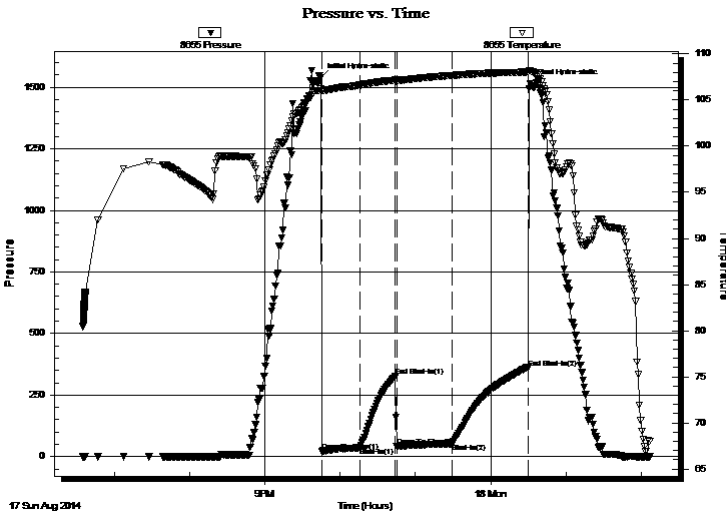
## Serial #: 8655

**Outside**

Press@RunDepth: 54.31 psig @ 3195.00 ft (KB)      Capacity: 8000.00 psig  
 Start Date: 2014.08.17      End Date: 2014.08.18      Last Calib.: 2014.08.18  
 Start Time: 18:35:01      End Time: 02:07:00      Time On Btm: 2014.08.17 @ 21:44:30  
 Time Off Btm: 2014.08.18 @ 00:31:30

TEST COMMENT: 30-IF-BOB in 24 mins  
 30-ISI-No Return  
 45-FF-Built to 9"  
 60-FSI-Weak Surface Return at 5 mins, died in 2 mins.

## PRESSURE SUMMARY



Time (Min.)	Pressure (psig)	Temp (deg F)	Annotation
0	1538.16	106.25	Initial Hydro-static
1	20.41	106.02	Open To Flow (1)
31	36.23	106.61	Shut-In(1)
60	326.47	107.16	End Shut-In(1)
61	41.25	107.11	Open To Flow (2)
105	54.31	107.67	Shut-In(2)
165	361.00	108.04	End Shut-In(2)
167	1515.67	108.18	Final Hydro-static

## Recovery

Length (ft)	Description	Volume (bbl)
0.00	GIP-126', 100%g	0.00
20.00	SOCM, 10%o, 90%m	0.28
63.00	WCM, 40%w , 60%m, w ith oil spots	0.88

## Gas Rates

	Choke (inches)	Pressure (psig)	Gas Rate (Mcf/d)



# TRILOBITE TESTING, INC

## DRILL STEM TEST REPORT

American Warrior, Inc  
 PO Box 399  
 Garden City, KS 67846  
 ATTN: Jim Musgrove

**23-17s-14w Barton, KS**  
**Tempero #8-23**  
 Job Ticket: 58733 **DST#: 1**  
 Test Start: 2014.08.17 @ 18:35:00

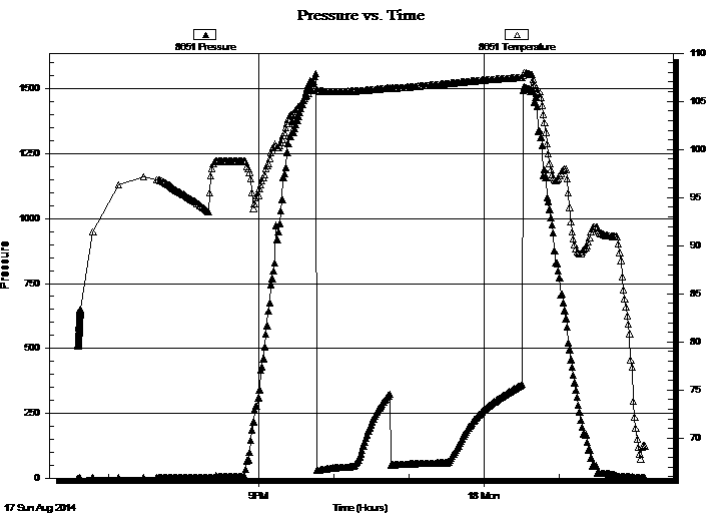
### GENERAL INFORMATION:

Formation: **LKC "D-G"**  
 Deviated: No Whipstock: ft (KB)  
 Test Type: Conventional Bottom Hole (Initial)  
 Tester: Phillip Gage  
 Time Tool Opened: 21:45:30  
 Time Test Ended: 02:07:00  
 Unit No: 62  
**Interval: 3194.00 ft (KB) To 3239.00 ft (KB) (TVD)**  
 Reference Elevations: 1913.00 ft (KB)  
 Total Depth: 3239.00 ft (KB) (TVD)  
 1905.00 ft (CF)  
 Hole Diameter: 7.88 inches Hole Condition: Fair  
 KB to GR/CF: 8.00 ft

### Serial #: 8651 Inside

Press@RunDepth: psig @ 3195.00 ft (KB)  
 Capacity: 8000.00 psig  
 Start Date: 2014.08.17 End Date: 2014.08.18  
 Last Calib.: 2014.08.18  
 Start Time: 18:35:01 End Time: 02:08:30  
 Time On Btm:  
 Time Off Btm:

**TEST COMMENT:** 30-IF-BOB in 24 mins  
 30-ISI-No Return  
 45-FF-Built to 9"  
 60-FSI-Weak Surface Return at 5 mins, died in 2 mins.



### PRESSURE SUMMARY

Time (Min.)	Pressure (psig)	Temp (deg F)	Annotation

### Recovery

Length (ft)	Description	Volume (bbl)
0.00	GIP-126', 100%g	0.00
20.00	SOCM, 10%o, 90%m	0.28
63.00	WCM, 40%w , 60%m, w ith oil spots	0.88

### Gas Rates

	Choke (inches)	Pressure (psig)	Gas Rate (Mcf/d)



**TRILOBITE  
TESTING, INC**

# DRILL STEM TEST REPORT

**TOOL DIAGRAM**

American Warrior, Inc  
 PO Box 399  
 Garden City, KS 67846  
 ATTN: Jim Musgrove

**23-17s-14w Barton,KS**  
**Tempero #8-23**  
 Job Ticket: 58733 **DST#: 1**  
 Test Start: 2014.08.17 @ 18:35:00

**Tool Information**

Drill Pipe:	Length: 3194.00 ft	Diameter: 3.80 inches	Volume: 44.80 bbl	Tool Weight:	2000.00 lb
Heavy Wt. Pipe:	Length: 0.00 ft	Diameter: 2.75 inches	Volume: 0.00 bbl	Weight set on Packer:	25000.00 lb
Drill Collar:	Length: 0.00 ft	Diameter: 2.25 inches	Volume: 0.00 bbl	Weight to Pull Loose:	65000.00 lb
			<u>Total Volume: 44.80 bbl</u>	Tool Chased	0.00 ft
Drill Pipe Above KB:	20.00 ft			String Weight: Initial	42000.00 lb
Depth to Top Packer:	3194.00 ft			Final	42000.00 lb
Depth to Bottom Packer:	ft				
Interval between Packers:	45.00 ft				
Tool Length:	65.00 ft				
Number of Packers:	2	Diameter: 6.75 inches			

Tool Comments:

<b>Tool Description</b>	<b>Length (ft)</b>	<b>Serial No.</b>	<b>Position</b>	<b>Depth (ft)</b>	<b>Accum. Lengths</b>
-------------------------	--------------------	-------------------	-----------------	-------------------	-----------------------

Change Over Sub	1.00			3175.00	
Shut In Tool	5.00			3180.00	
Hydraulic tool	5.00			3185.00	
Packer	5.00			3190.00	20.00 Bottom Of Top Packer
Packer	4.00			3194.00	
Stubb	1.00			3195.00	
Recorder	0.00	8651	Inside	3195.00	
Recorder	0.00	8655	Outside	3195.00	
Perforations	8.00			3203.00	
Change Over Sub	1.00			3204.00	
Drill Pipe	31.00			3235.00	
Change Over Sub	1.00			3236.00	
Bullnose	3.00			3239.00	45.00 Bottom Packers & Anchor

**Total Tool Length: 65.00**



**TRILOBITE  
TESTING, INC**

# DRILL STEM TEST REPORT

**FLUID SUMMARY**

American Warrior, Inc  
PO Box 399  
Garden City, KS 67846  
ATTN: Jim Musgrove

**23-17s-14w Barton,KS**  
**Tempero #8-23**  
Job Ticket: 58733      **DST#: 1**  
Test Start: 2014.08.17 @ 18:35:00

## Mud and Cushion Information

Mud Type: Gel Chem	Cushion Type:	Oil API:	deg API
Mud Weight: 9.00 lb/gal	Cushion Length: ft	Water Salinity:	24000 ppm
Viscosity: 49.00 sec/qt	Cushion Volume: bbl		
Water Loss: 7.58 in <sup>3</sup>	Gas Cushion Type:		
Resistivity: ohm.m	Gas Cushion Pressure: psig		
Salinity: 3100.00 ppm			
Filter Cake: inches			

## Recovery Information

Recovery Table

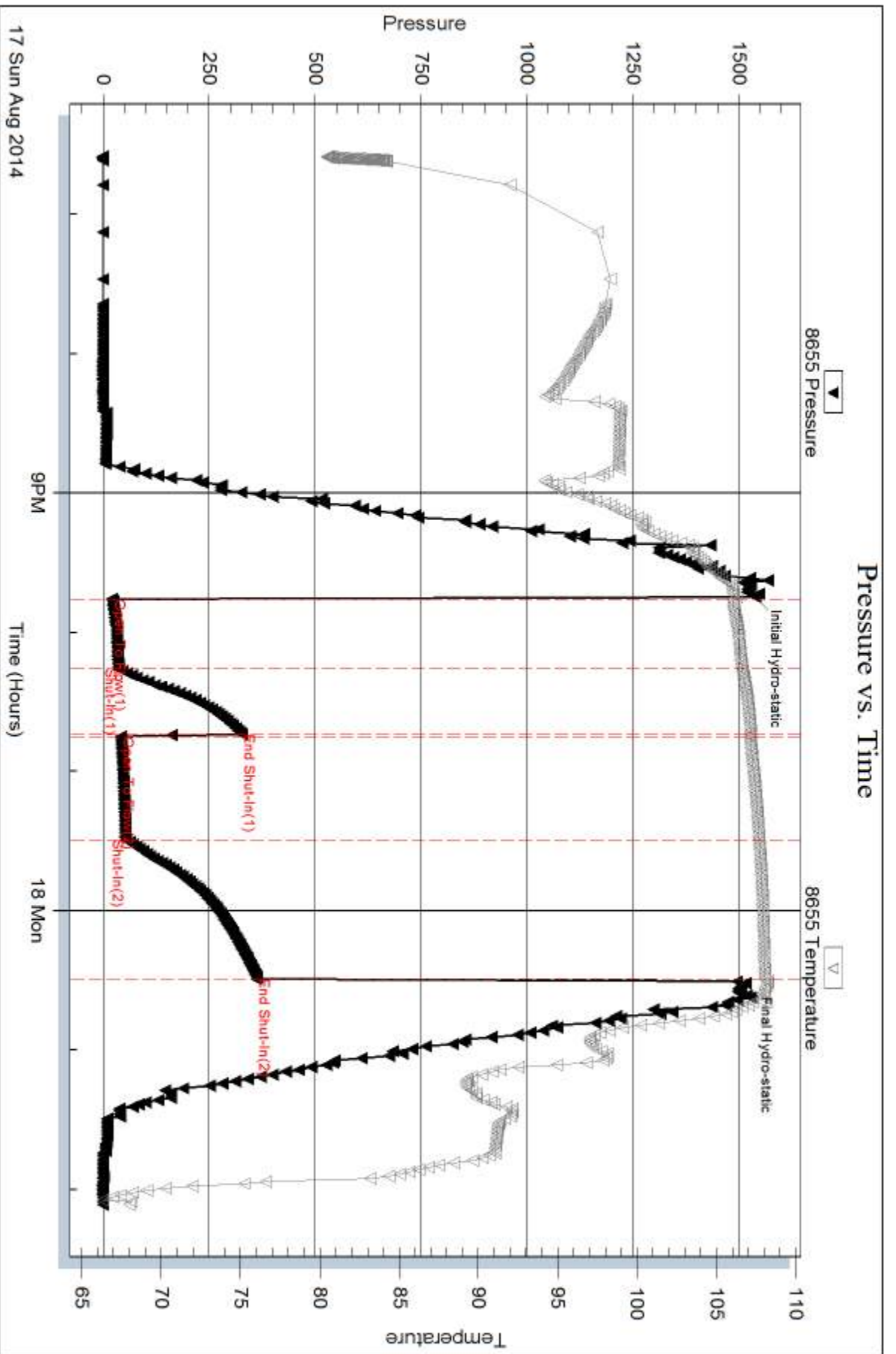
Length ft	Description	Volume bbl
0.00	GIP-126', 100%g	0.000
20.00	SOCM, 10%o, 90%m	0.281
63.00	WCM, 40%w , 60%m, w ith oil spots	0.884

Total Length: 83.00 ft      Total Volume: 1.165 bbl

Num Fluid Samples: 0      Num Gas Bombs: 0      Serial #:

Laboratory Name:      Laboratory Location:

Recovery Comments: .141 @ 67 degrees = 24,000 Salinity



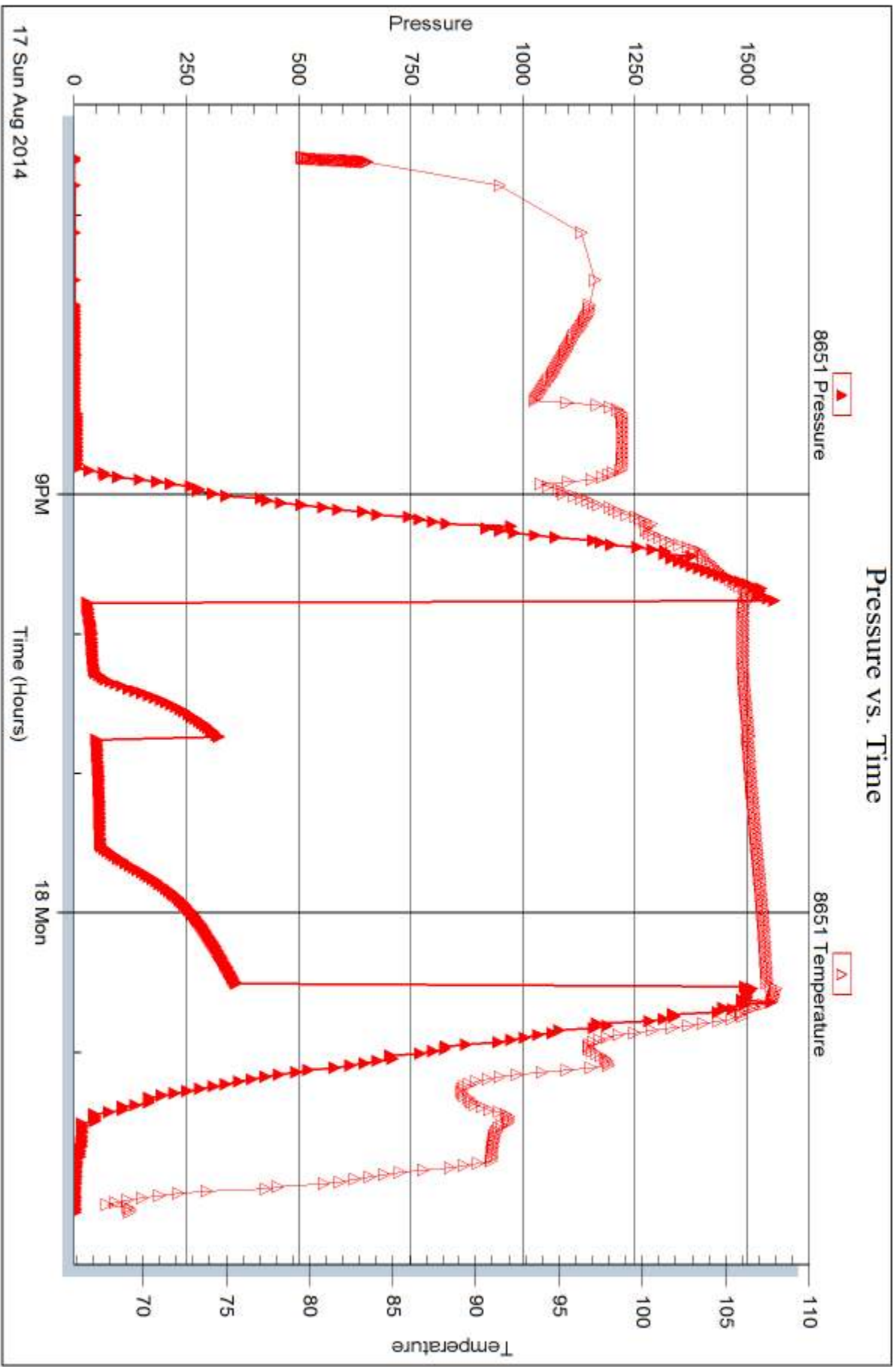
Serial #: 8651

Inside

American Warrior, Inc

Tempero #8-23

DST Test Number: 1



Tribble Testing, Inc

Ref. No: 58733

Printed: 2014.08.21 @ 14:38:26



## DRILL STEM TEST REPORT

Prepared For: **American Warrior, Inc**

PO Box 399  
Garden City, KS 67846

ATTN: Jim Musgrove

### **Tempero #8-23**

#### **23-17s-14w Barton,KS**

Start Date: 2014.08.18 @ 09:13:00

End Date: 2014.08.18 @ 16:33:30

Job Ticket #: 58734                      DST #: 2

Trilobite Testing, Inc  
1515 Commerce Parkway Hays, KS 67601  
ph: 785-625-4778 fax: 785-625-5620

Printed: 2014.08.21 @ 14:37:45





**TRILOBITE  
TESTING, INC**

# DRILL STEM TEST REPORT

American Warrior, Inc  
PO Box 399  
Garden City, KS 67846  
ATTN: Jim Musgrove

**23-17s-14w Barton,KS**

**Temporo #8-23**

Job Ticket: 58734

**DST#: 2**

Test Start: 2014.08.18 @ 09:13:00

## GENERAL INFORMATION:

Formation: **LKC "H"**  
 Deviated: No Whipstock: ft (KB)  
 Time Tool Opened: 11:17:00  
 Time Test Ended: 16:33:30  
 Interval: **3271.00 ft (KB) To 330.00 ft (KB) (TVD)**  
 Total Depth: 3300.00 ft (KB) (TVD)  
 Hole Diameter: 7.88 inches Hole Condition: Fair  
 Test Type: Conventional Bottom Hole (Reset)  
 Tester: Phillip Gage  
 Unit No: 62  
 Reference Elevations: 1913.00 ft (KB)  
 1905.00 ft (CF)  
 KB to GR/CF: 8.00 ft

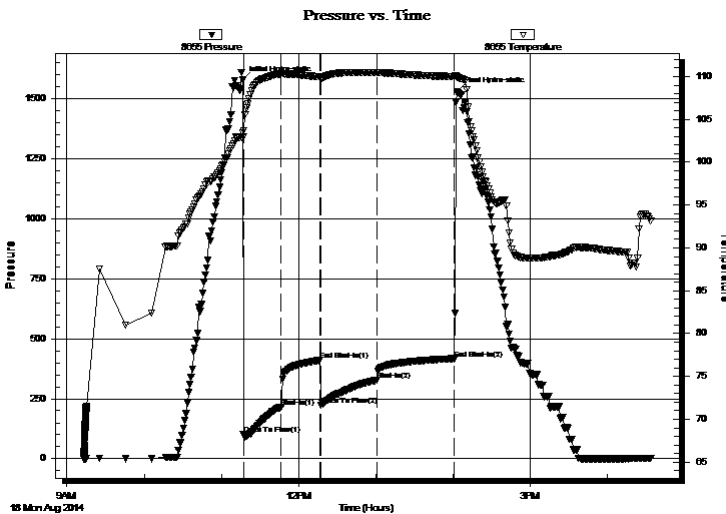
## Serial #: 8655

**Outside**

Press@RunDepth: 328.65 psig @ 3272.00 ft (KB) Capacity: 8000.00 psig  
 Start Date: 2014.08.18 End Date: 2014.08.18 Last Calib.: 2014.08.18  
 Start Time: 09:13:01 End Time: 16:33:30 Time On Btm: 2014.08.18 @ 11:16:30  
 Time Off Btm: 2014.08.18 @ 14:03:00

TEST COMMENT: 30-IF-BOB in 1 min.  
 30-ISI-BOB Return in 3 mins.  
 45-FF-BOB in 3 mins, gas to surface, unable to gauge.  
 60-FSI-BOB Return in 5 mins.

## PRESSURE SUMMARY



Time (Min.)	Pressure (psig)	Temp (deg F)	Annotation
0	1578.26	103.44	Initial Hydro-static
1	101.85	102.96	Open To Flow (1)
30	216.04	110.31	Shut-In(1)
60	410.01	109.97	End Shut-In(1)
61	222.76	109.71	Open To Flow (2)
105	328.65	110.46	Shut-In(2)
165	417.59	109.99	End Shut-In(2)
167	1530.79	109.96	Final Hydro-static

## Recovery

Length (ft)	Description	Volume (bbl)
0.00	GIP-2331' 100%g	0.00
330.00	GCO, 30%g, 70%o	4.63
252.00	VSMOOG, 5%m, 45%o, 50%g	3.53
126.00	VSMWOCG, 5%m, 5%w, 40%o, 50%g	1.77
126.00	VSMCW, 5%m, 95%w	1.77

## Gas Rates

	Choke (inches)	Pressure (psig)	Gas Rate (Mcf/d)

\* Recovery from multiple tests





**TRILOBITE  
TESTING, INC**

# DRILL STEM TEST REPORT

**TOOL DIAGRAM**

American Warrior, Inc  
PO Box 399  
Garden City, KS 67846  
ATTN: Jim Musgrove

**23-17s-14w Barton,KS**  
**Tempero #8-23**  
Job Ticket: 58734      **DST#: 2**  
Test Start: 2014.08.18 @ 09:13:00

**Tool Information**

Drill Pipe:	Length: 3255.00 ft	Diameter: 3.80 inches	Volume: 45.66 bbl	Tool Weight:	2000.00 lb
Heavy Wt. Pipe:	Length: 0.00 ft	Diameter: 2.75 inches	Volume: 0.00 bbl	Weight set on Packer:	25000.00 lb
Drill Collar:	Length: 0.00 ft	Diameter: 2.25 inches	Volume: 0.00 bbl	Weight to Pull Loose:	64000.00 lb
			<u>Total Volume: 45.66 bbl</u>	Tool Chased	0.00 ft
Drill Pipe Above KB:	4.00 ft			String Weight: Initial	42000.00 lb
Depth to Top Packer:	3271.00 ft			Final	52000.00 lb
Depth to Bottom Packer:	ft				
Interval between Packers:	29.00 ft				
Tool Length:	49.00 ft				
Number of Packers:	2	Diameter: 6.75 inches			

Tool Comments:

**Tool Description**

Tool Description	Length (ft)	Serial No.	Position	Depth (ft)	Accum. Lengths
Change Over Sub	1.00			3252.00	
Shut In Tool	5.00			3257.00	
Hydraulic tool	5.00			3262.00	
Packer	5.00			3267.00	20.00      Bottom Of Top Packer
Packer	4.00			3271.00	
Stubb	1.00			3272.00	
Recorder	0.00	8651	Inside	3272.00	
Recorder	0.00	8655	Outside	3272.00	
Perforations	25.00			3297.00	
Bullnose	3.00			3300.00	29.00      Bottom Packers & Anchor
<b>Total Tool Length:</b>	<b>49.00</b>				



**TRILOBITE  
TESTING, INC**

# DRILL STEM TEST REPORT

**FLUID SUMMARY**

American Warrior, Inc  
PO Box 399  
Garden City, KS 67846  
ATTN: Jim Musgrove

**23-17s-14w Barton,KS**  
**Tempero #8-23**  
Job Ticket: 58734      **DST#: 2**  
Test Start: 2014.08.18 @ 09:13:00

## Mud and Cushion Information

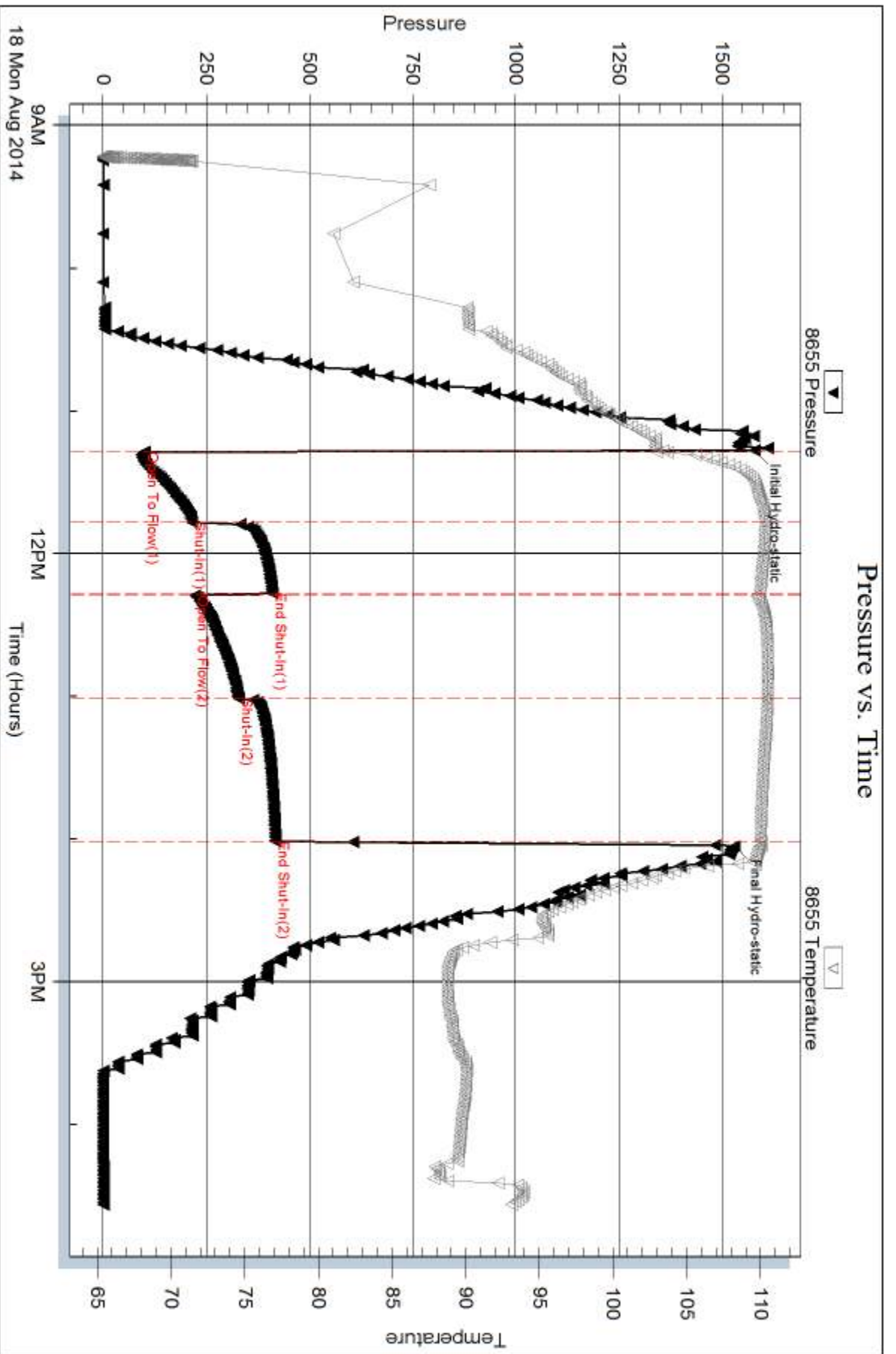
Mud Type: Gel Chem	Cushion Type:	Oil API: 41 deg API
Mud Weight: 9.00 lb/gal	Cushion Length: ft	Water Salinity: ppm
Viscosity: 49.00 sec/qt	Cushion Volume: bbl	
Water Loss: 7.58 in <sup>3</sup>	Gas Cushion Type:	
Resistivity: ohm.m	Gas Cushion Pressure: psig	
Salinity: 3100.00 ppm		
Filter Cake: inches		

## Recovery Information

Recovery Table

Length ft	Description	Volume bbl
0.00	GIP-2331' 100%g	0.000
330.00	GCO, 30%g, 70%o	4.629
252.00	VSMOCC, 5%m, 45%o, 50%g	3.535
126.00	VSMWOCG, 5%m, 5%w, 40%o, 50%g	1.767
126.00	VSMCW, 5%m, 95%w	1.767

Total Length: 834.00 ft      Total Volume: 11.698 bbl  
 Num Fluid Samples: 0      Num Gas Bombs: 0      Serial #:  
 Laboratory Name:      Laboratory Location:  
 Recovery Comments: .066 @ 99 degrees = 36,000 Salinity



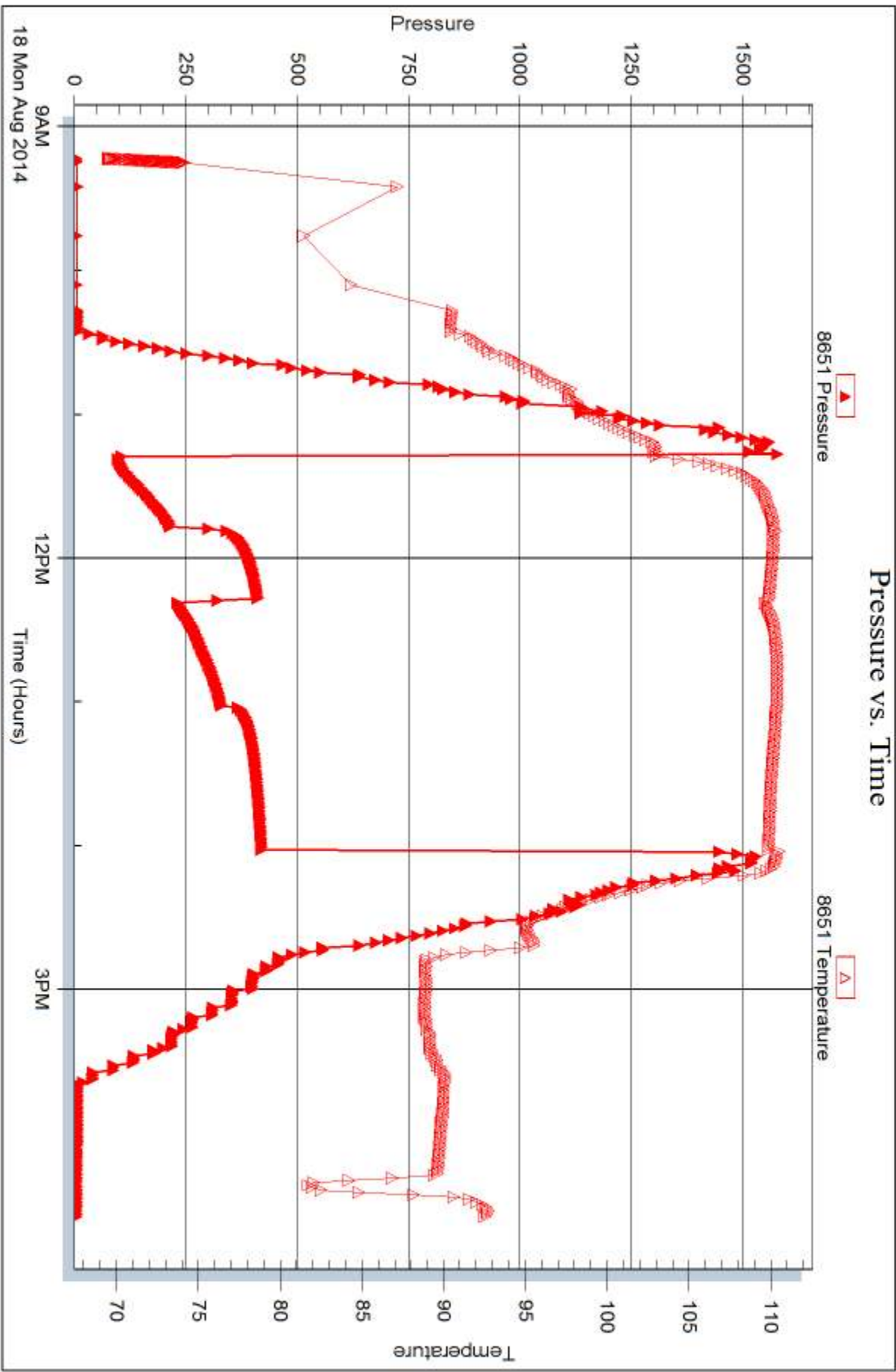
Serial #: 8651

Inside

American Warrior, Inc

Tempero #8-23

DST Test Number: 2



Trilobite Testing, Inc

Ref. No: 58734

Printed: 2014.08.21 @ 14:37:47



## DRILL STEM TEST REPORT

Prepared For: **American Warrior, Inc**

PO Box 399  
Garden City, KS 67846

ATTN: Jim Musgrove

### **Tempero #8-23**

#### **23-17s-14w Barton,KS**

Start Date: 2014.08.19 @ 04:52:00

End Date: 2014.08.19 @ 10:19:00

Job Ticket #: 58735                      DST #: 3

Trilobite Testing, Inc  
1515 Commerce Parkway Hays, KS 67601  
ph: 785-625-4778 fax: 785-625-5620

Printed: 2014.08.21 @ 14:36:41



**TRILOBITE  
TESTING, INC.**

# DRILL STEM TEST REPORT

American Warrior, Inc  
 PO Box 399  
 Garden City, KS 67846  
 ATTN: Jim Musgrove

**23-17s-14w Barton,KS**

**Temporo #8-23**

Job Ticket: 58735      **DST#: 3**  
 Test Start: 2014.08.19 @ 04:52:00

## GENERAL INFORMATION:

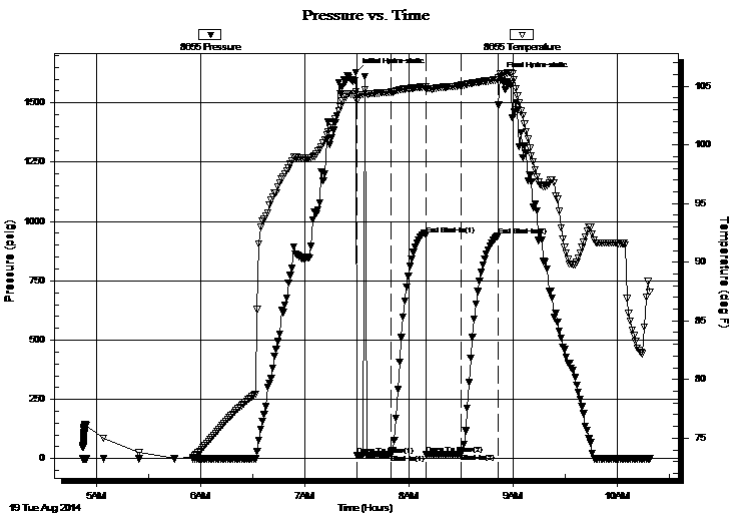
Formation: **Arbuckle**  
 Deviated: No Whipstock:      ft (KB)  
 Time Tool Opened: 07:30:00  
 Time Test Ended: 10:19:00  
 Interval: **3354.00 ft (KB) To 3410.00 ft (KB) (TVD)**  
 Total Depth: 3410.00 ft (KB) (TVD)  
 Hole Diameter: 7.88 inches Hole Condition: Fair  
 Test Type: Conventional Bottom Hole (Reset)  
 Tester: Phillip Gage  
 Unit No: 62  
 Reference Elevations: 1913.00 ft (KB)  
 1905.00 ft (CF)  
 KB to GR/CF: 8.00 ft

**Serial #: 8655      Outside**

Press@RunDepth: 20.38 psig @ 3355.00 ft (KB)      Capacity: 8000.00 psig  
 Start Date: 2014.08.19      End Date: 2014.08.19      Last Calib.: 2014.08.19  
 Start Time: 04:52:01      End Time: 10:19:00      Time On Btm: 2014.08.19 @ 07:29:30  
 Time Off Btm: 2014.08.19 @ 08:52:30

TEST COMMENT: 20-IF-No Blow , Flushed, No Blow  
 20-ISI-No Return  
 20-FF-No Blow  
 20-FSI-No Return

## PRESSURE SUMMARY



Time (Min.)	Pressure (psig)	Temp (deg F)	Annotation
0	1628.79	104.55	Initial Hydro-static
1	14.74	103.74	Open To Flow (1)
20	16.62	104.50	Shut-In(1)
40	944.04	104.97	End Shut-In(1)
41	17.32	104.81	Open To Flow (2)
61	20.38	105.09	Shut-In(2)
82	939.94	105.56	End Shut-In(2)
83	1611.33	106.07	Final Hydro-static

## Recovery

Length (ft)	Description	Volume (bbl)
10.00	VSOCM, 5%o, 95%m	0.14

\* Recovery from multiple tests

## Gas Rates

Choke (inches)	Pressure (psig)	Gas Rate (Mcf/d)





**TRILOBITE TESTING, INC**

# DRILL STEM TEST REPORT

American Warrior, Inc  
 PO Box 399  
 Garden City, KS 67846  
 ATTN: Jim Musgrove

**23-17s-14w Barton,KS**

**Temporo #8-23**

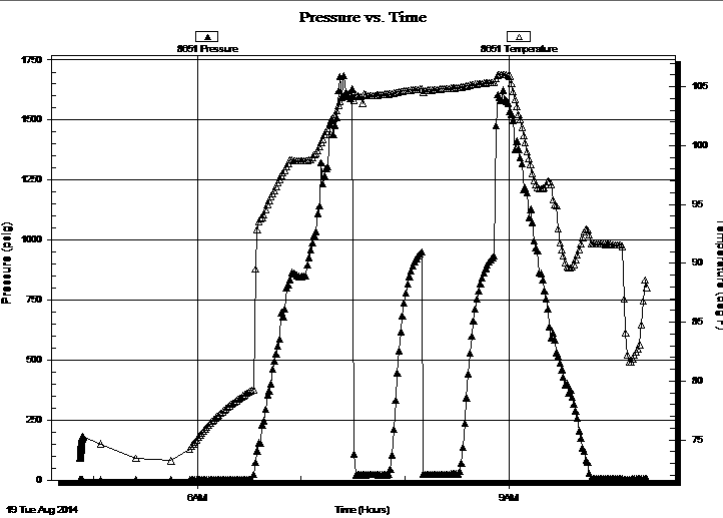
Job Ticket: 58735 **DST#: 3**  
 Test Start: 2014.08.19 @ 04:52:00

## GENERAL INFORMATION:

Formation: **Arbuckle**  
 Deviated: No Whipstock: ft (KB)  
 Time Tool Opened: 07:30:00  
 Time Test Ended: 10:19:00  
 Test Type: Conventional Bottom Hole (Reset)  
 Tester: Phillip Gage  
 Unit No: 62  
 Interval: **3354.00 ft (KB) To 3410.00 ft (KB) (TVD)**  
 Total Depth: 3410.00 ft (KB) (TVD)  
 Hole Diameter: 7.88 inches Hole Condition: Fair  
 Reference Elevations: 1913.00 ft (KB)  
 1905.00 ft (CF)  
 KB to GR/CF: 8.00 ft

**Serial #: 8651 Inside**  
 Press@RunDepth: psig @ 3355.00 ft (KB) Capacity: 8000.00 psig  
 Start Date: 2014.08.19 End Date: 2014.08.19 Last Calib.: 2014.08.19  
 Start Time: 04:52:01 End Time: 10:20:00 Time On Btm:  
 Time Off Btm:

**TEST COMMENT:** 20-IF-No Blow , Flushed, No Blow  
 20-ISI-No Return  
 20-FF-No Blow  
 20-FSI-No Return



## PRESSURE SUMMARY

Time (Min.)	Pressure (psig)	Temp (deg F)	Annotation

## Recovery

Length (ft)	Description	Volume (bbl)
10.00	VSOCM, 5%o, 95%m	0.14

\* Recovery from multiple tests

## Gas Rates

Choke (inches)	Pressure (psig)	Gas Rate (Mcf/d)



**TRILOBITE  
TESTING, INC**

# DRILL STEM TEST REPORT

**TOOL DIAGRAM**

American Warrior, Inc  
PO Box 399  
Garden City, KS 67846  
ATTN: Jim Musgrove

**23-17s-14w Barton,KS**  
**Tempero #8-23**  
Job Ticket: 58735 **DST#: 3**  
Test Start: 2014.08.19 @ 04:52:00

## Tool Information

Drill Pipe:	Length: 3350.00 ft	Diameter: 3.80 inches	Volume: 46.99 bbl	Tool Weight: 2000.00 lb
Heavy Wt. Pipe:	Length: 0.00 ft	Diameter: 2.75 inches	Volume: 0.00 bbl	Weight set on Packer: 25000.00 lb
Drill Collar:	Length: 0.00 ft	Diameter: 2.25 inches	Volume: 0.00 bbl	Weight to Pull Loose: 50000.00 lb
			<u>Total Volume: 46.99 bbl</u>	Tool Chased 0.00 ft
Drill Pipe Above KB:	16.00 ft			String Weight: Initial 44000.00 lb
Depth to Top Packer:	3354.00 ft			Final 46000.00 lb
Depth to Bottom Packer:	ft			
Interval between Packers:	56.00 ft			
Tool Length:	76.00 ft			
Number of Packers:	2	Diameter: 6.75 inches		

Tool Comments:

## Tool Description

Tool Description	Length (ft)	Serial No.	Position	Depth (ft)	Accum. Lengths
Change Over Sub	1.00			3335.00	
Shut In Tool	5.00			3340.00	
Hydraulic tool	5.00			3345.00	
Packer	5.00			3350.00	20.00 Bottom Of Top Packer
Packer	4.00			3354.00	
Stubb	1.00			3355.00	
Recorder	0.00	8651	Inside	3355.00	
Recorder	0.00	8655	Outside	3355.00	
Perforations	19.00			3374.00	
Change Over Sub	1.00			3375.00	
Drill Pipe	31.00			3406.00	
Change Over Sub	1.00			3407.00	
Bullnose	3.00			3410.00	56.00 Bottom Packers & Anchor

**Total Tool Length: 76.00**



**TRILOBITE  
TESTING, INC**

# DRILL STEM TEST REPORT

**FLUID SUMMARY**

American Warrior, Inc  
 PO Box 399  
 Garden City, KS 67846  
 ATTN: Jim Musgrove

**23-17s-14w Barton,KS**  
**Tempero #8-23**  
 Job Ticket: 58735      **DST#: 3**  
 Test Start: 2014.08.19 @ 04:52:00

## Mud and Cushion Information

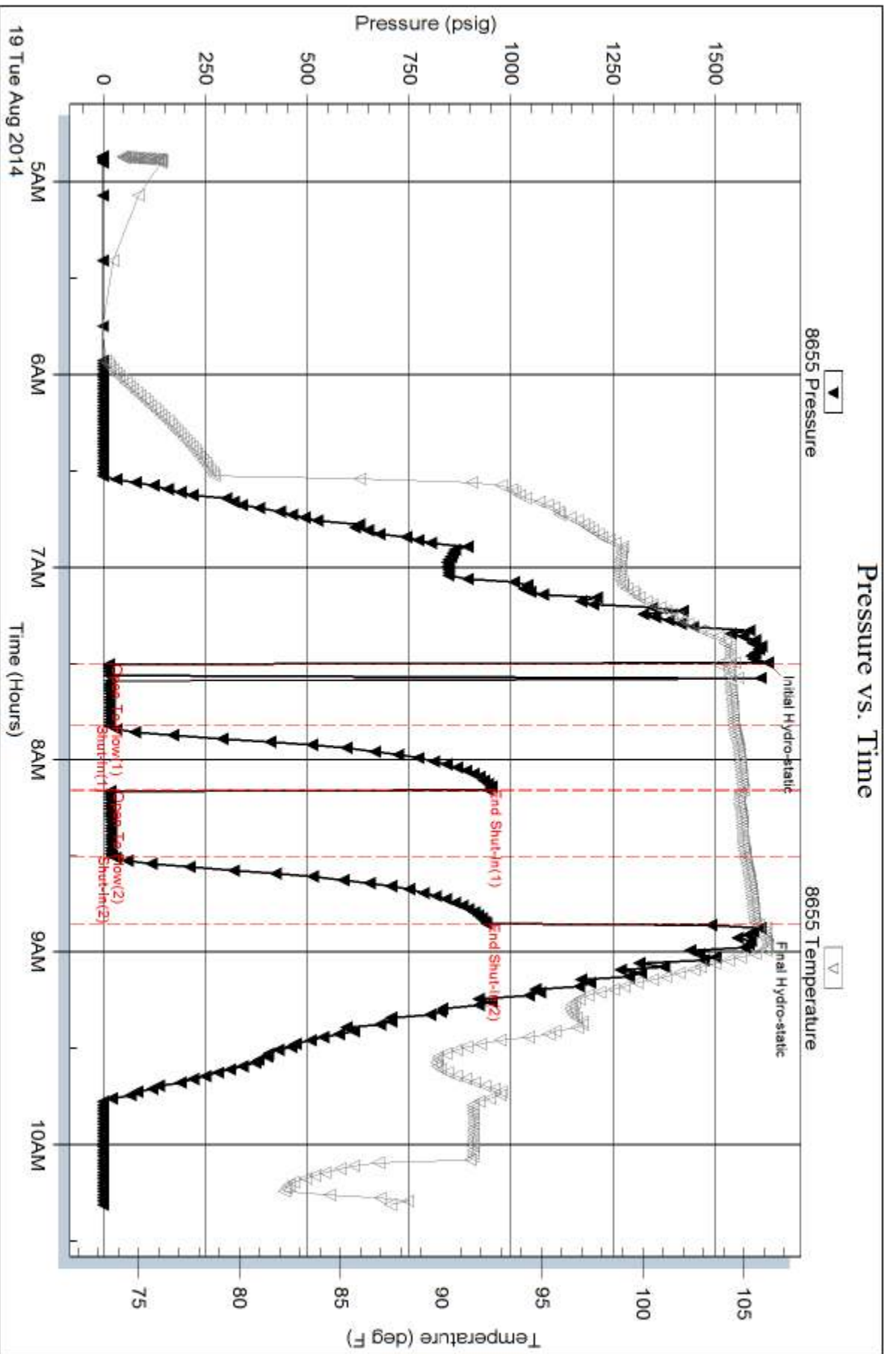
Mud Type: Gel Chem	Cushion Type:	Oil API:	deg API
Mud Weight: 9.00 lb/gal	Cushion Length: ft	Water Salinity:	ppm
Viscosity: 60.00 sec/qt	Cushion Volume: bbl		
Water Loss: 7.19 in <sup>3</sup>	Gas Cushion Type:		
Resistivity: ohm.m	Gas Cushion Pressure: psig		
Salinity: 4000.00 ppm			
Filter Cake: inches			

## Recovery Information

Recovery Table

Length ft	Description	Volume bbl
10.00	VSOCM, 5%o, 95%m	0.140

Total Length: 10.00 ft      Total Volume: 0.140 bbl  
 Num Fluid Samples: 0      Num Gas Bombs: 0      Serial #:  
 Laboratory Name:      Laboratory Location:  
 Recovery Comments:



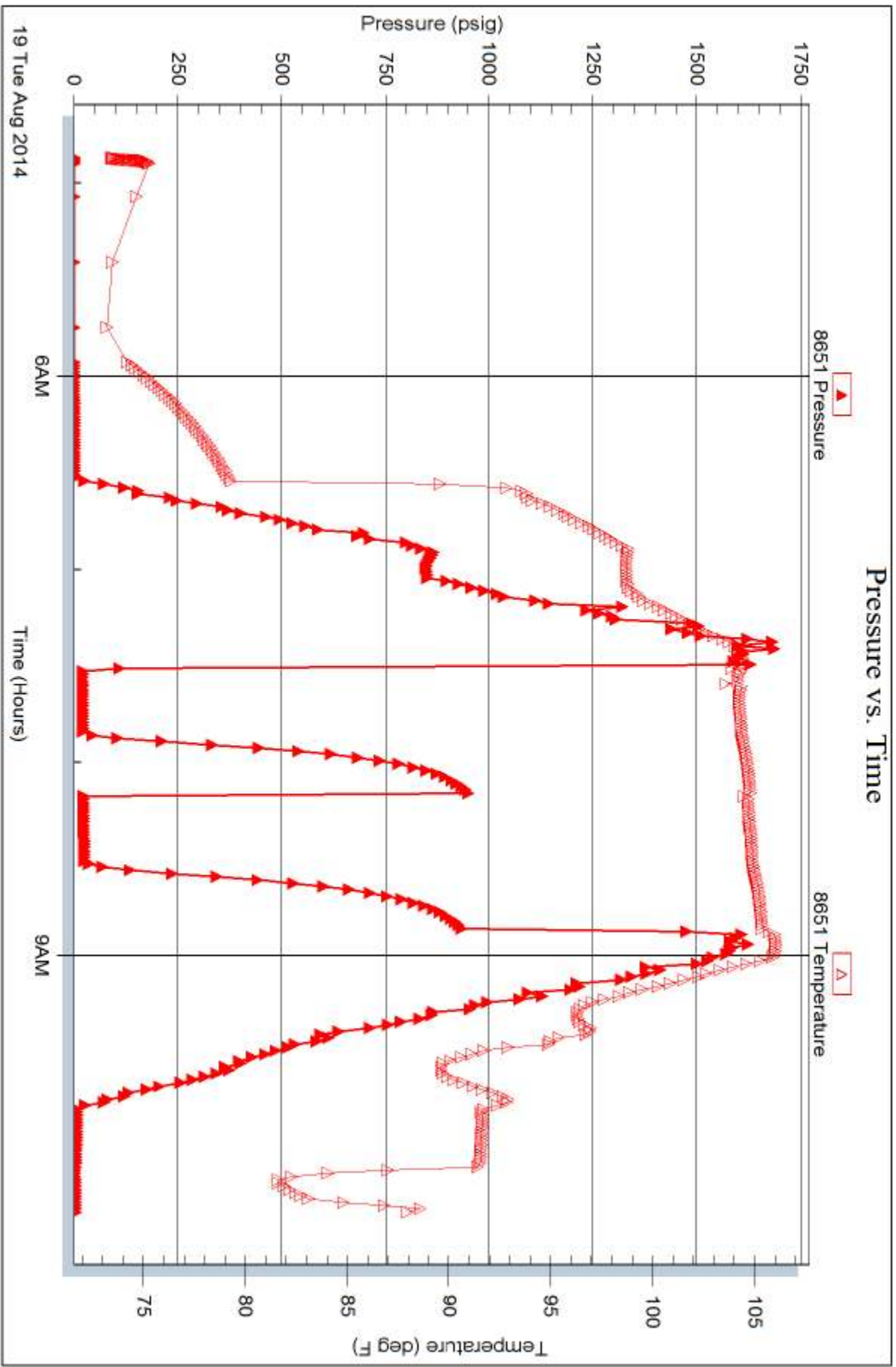
Serial #: 8651

Inside

American Warrior, Inc

Temporo #8-23

DST Test Number: 3



Trilobite Testing, Inc

Ref. No: 58735

Printed: 2014.08.21 @ 14:36:43



# TRILOBITE TESTING INC.

1515 Commerce Parkway • Hays, Kansas 67601

## Test Ticket

NO. 58733

4/10

Well Name & No. Temporo # 2-23 Test No. 1 Date 8-17-14  
 Company American Warrior, Inc. Elevation 1913 KB 1905 GL  
 Address 3118 Cummings RD P.O. Box 399 Garden City, KS 67846  
 Co. Rep / Geo. Jim Musgrave Rig Duke 8  
 Location: Sec. 23 Twp. 17s Rge. 14w Co. Barton State KS

Interval Tested 3194-3239 Zone Tested LKC "D-G"  
 Anchor Length 45' Drill Pipe Run 3194 Mud Wt. 9.0  
 Top Packer Depth 3189 Drill Collars Run 0 Vis 49  
 Bottom Packer Depth 3194 Wt. Pipe Run 0 WL 7.6  
 Total Depth 3239 Chlorides 3,100 ppm System LCM 0

Blow Description IF- BOB in 24 mins  
ISF No Return  
FF Built to 9"  
FSI - Weak Surface Return at 5 mins, died in 2 mins.

Rec	Feet of	%gas	%oil	%water	%mud
<del>10</del>	GIP - 126'	100			
20'	SO (m)		10		90
631	WCM, with oil spots			40	60
Rec Total	831	BHT 108	Gravity —	API RW 141 @ 67° F	Chlorides 24,000 ppm

(A) Initial Hydrostatic 1536  Test 1150 T-On Location 17:14  
 (B) First Initial Flow 20  Jars \_\_\_\_\_ T-Started 18:35  
 (C) First Final Flow 36  Safety Joint \_\_\_\_\_ T-Open 21:45  
 (D) Initial Shut-In 326  Circ Sub \_\_\_\_\_ T-Pulled 00:30  
 (E) Second Initial Flow 41  Hourly Standby \_\_\_\_\_ T-Out 02:08  
 (F) Second Final Flow 54  Mileage 94 RT 145.70 Comments \_\_\_\_\_  
 (G) Final Shut-In 361  Sampler \_\_\_\_\_  
 (H) Final Hydrostatic 1515  Straddle \_\_\_\_\_  Ruined Shale Packer \_\_\_\_\_  
 Shale Packer \_\_\_\_\_  Ruined Packer \_\_\_\_\_

Initial Open 30  Extra Packer \_\_\_\_\_  Extra Copies \_\_\_\_\_  
 Initial Shut-In 30  Extra Recorder \_\_\_\_\_ Sub Total 0  
 Final Flow 45  Day Standby \_\_\_\_\_ Total 1295.70  
 Final Shut-In 60  Accessibility \_\_\_\_\_ MP/DST Disc't \_\_\_\_\_  
 Sub Total 1295.70

Approved By \_\_\_\_\_ Our Representative Phil Hayes *Thank You*  
 Trilobite Testing Inc. shall not be liable for damaged of any kind of the property or personnel of the one for whom a test is made, or for any loss suffered or sustained, directly or indirectly, through the use of its equipment, or its statements or opinion concerning the results of any test, tools lost or damaged in the hole shall be paid for at cost by the party to whom the test is made.





# TRILOBITE TESTING INC.

1515 Commerce Parkway • Hays, Kansas 67601

## Test Ticket

NO. 58734

4/10

Well Name & No. Tempero #8-23 Test No. 2 Date 8-18-14  
 Company American Warrior, Inc Elevation 1913 KB 1905 GL  
 Address 3118 Cammings RD P.O. Box 399 Garden City, KS 67846  
 Co. Rep / Geo. Jim Musgrave Rig Duke 8  
 Location: Sec. 23 Twp. 17s Rge. 14w Co. Barton State KS

Interval Tested 3271-3300 Zone Tested LKC "H"  
 Anchor Length 29' Drill Pipe Run 3255 Mud Wt. 9.0  
 Top Packer Depth 3266 Drill Collars Run — Vis 60  
 Bottom Packer Depth 3271 Wt. Pipe Run — WL 7.2  
 Total Depth 3300 Chlorides 4,000 ppm System LCM 0

Blow Description IF- BOB in 1 min.  
ISF BOB Return in 3 mins.  
FF- BOB in 3 mins, Gas to surface, unable to gauge.  
FSL- BOB Return in 5 mins.

Rec	Feet of	%gas	%oil	%water	%mud
<u>0</u>	<u>GIP-2331'</u>	<u>100%</u>			
<u>330'</u>	<u>GCO</u>	<u>30%</u>	<u>70%</u>		
<u>252'</u>	<u>USMOCB</u>	<u>50%</u>	<u>45%</u>		<u>5%</u>
<u>126'</u>	<u>USNWOCB</u>	<u>50%</u>	<u>40%</u>	<u>5%</u>	<u>5%</u>
<u>126'</u>	<u>USMCW</u>			<u>95%</u>	<u>5%</u>

Rec Total 834' BHT 110 Gravity 41 API RW .066 @ 99 °F Chlorides 36,000 ppm

(A) Initial Hydrostatic 1578  Test 1150 T-On Location 09:12  
 (B) First Initial Flow 101  Jars \_\_\_\_\_ T-Started 09:13  
 (C) First Final Flow 216  Safety Joint \_\_\_\_\_ T-Open 11:17  
 (D) Initial Shut-In 410  Circ Sub \_\_\_\_\_ T-Pulled 14:02  
 (E) Second Initial Flow 222  Hourly Standby \_\_\_\_\_ T-Out 16:35  
 (F) Second Final Flow 328  Mileage 94 RT 145.70  
 (G) Final Shut-In 413  Sampler \_\_\_\_\_  
 (H) Final Hydrostatic 1530  Straddle \_\_\_\_\_  Ruined Shale Packer \_\_\_\_\_  
 Shale Packer \_\_\_\_\_  Ruined Packer \_\_\_\_\_  
 Extra Packer \_\_\_\_\_  Extra Copies \_\_\_\_\_  
 Extra Recorder \_\_\_\_\_

Initial Open 30  
 Initial Shut-In 30  
 Final Flow 45  
 Final Shut-In 60  
 Sub Total 1295.70  
 Total 1295.70  
 MP/DST Disc't \_\_\_\_\_

Approved By \_\_\_\_\_ Our Representative Phil Long Thank You.

Trilobite Testing Inc. shall not be liable for damaged of any kind of the property or personnel of the one for whom a test is made, or for any loss suffered or sustained, directly or indirectly, through the use of its equipment, or its statements or opinion concerning the results of any test, tools lost or damaged in the hole shall be paid for at cost by the party for whom the test is made.



# TRILOBITE TESTING INC.

1515 Commerce Parkway • Hays, Kansas 67601

## Test Ticket

NO. 58735

4/10

Well Name & No. Tempero #8-23 Test No. 3 Date 8-19-14  
 Company American Warrior, Inc Elevation 1913 KB 1905 GL  
 Address 3118 Cummings RD P.O. Box 399 Garden City, KS 67846  
 Co. Rep / Geo. Jim Musgrave Rig Duke 8  
 Location: Sec. 23 Twp. 17S Rge. 14W Co. Barton State KS

Interval Tested 3354-3410 Zone Tested Arbuckle  
 Anchor Length 56 Drill Pipe Run 3350 Mud Wt. 9.0  
 Top Packer Depth 3349 Drill Collars Run — Vis 60  
 Bottom Packer Depth 3354 Wt. Pipe Run — WL 7.2  
 Total Depth 3410 Chlorides 4,000 ppm System LCM 0  
 Blow Description IF- No Blow, Flushed, No Blow  
ISI- No Return  
FF- No Blow  
FSI- No Return

Rec	Feet of	%gas	%oil	%water	%mud
<u>10'</u>	<u>USOLM</u>		<u>5</u>		<u>95</u>
Rec	Feet of	%gas	%oil	%water	%mud
Rec	Feet of	%gas	%oil	%water	%mud
Rec	Feet of	%gas	%oil	%water	%mud

Rec Total 10' BHT 106 Gravity — API RW — @ — °F Chlorides — ppm  
 (A) Initial Hydrostatic 1628  Test 1150 T-On Location 04:50  
 (B) First Initial Flow 19  Jars — T-Started 04:52  
 (C) First Final Flow 16  Safety Joint — T-Open 07:31  
 (D) Initial Shut-In 944  Circ Sub — T-Pulled 08:51  
 (E) Second Initial Flow 17  Hourly Standby — T-Out 10:21  
 (F) Second Final Flow 20  Mileage 94 RT 145.70 Comments —  
 (G) Final Shut-In 939  Sampler —  
 (H) Final Hydrostatic 1,611  Straddle —  Ruined Shale Packer —  
 Shale Packer —  Ruined Packer —  
 Extra Packer —  Extra Copies —  
 Initial Open 20  Extra Recorder — Sub Total 0  
 Initial Shut-In 20  Day Standby — Total 1295.70  
 Final Flow 20  Accessibility — MP/DST Disc't —  
 Final Shut-In 20 Sub Total 1295.70

Approved By — Our Representative Phil Kay Thank You

Trilobite Testing Inc. shall not be liable for damaged of any kind of the property or personnel of the one for whom a test is made, or for any loss suffered or sustained, directly or indirectly, through the use of its equipment, or its statements or opinion concerning the results of any test, tools lost or damaged in the hole shall be paid for at cost by the party for whom the test is made.