



TRILOBITE TESTING, INC.

DRILL STEM TEST REPORT

Shakespeare Oil Company, Inc.

22-16s-34w Scott

202 W Main St
Salem IL , 62881

Stoll 1-22

ATTN: Steve Davis

Job Ticket: 57465

DST#: 3

Test Start: 2014.09.17 @ 12:10:00

GENERAL INFORMATION:

Formation: **Johnson**

Deviated: No Whipstock: 0.00 ft (KB)

Time Tool Opened: 14:06:30

Time Test Ended: 19:39:30

Test Type: Conventional Bottom Hole (Reset)

Tester: Justin Harris

Unit No: 60

Interval: 4662.00 ft (KB) To 4720.00 ft (KB) (TVD)

Total Depth: 4720.00 ft (KB) (TVD)

Hole Diameter: 7.88 inches Hole Condition: Poor

Reference Elevations: 3140.00 ft (KB)

3128.00 ft (CF)

KB to GR/CF: 12.00 ft

Serial #: 8373

Press @ Run Depth: 33.53 psig @ ft (KB)

Start Date: 2014.09.17

End Date: 2014.09.17

Start Time: 12:10:05

End Time: 19:39:29

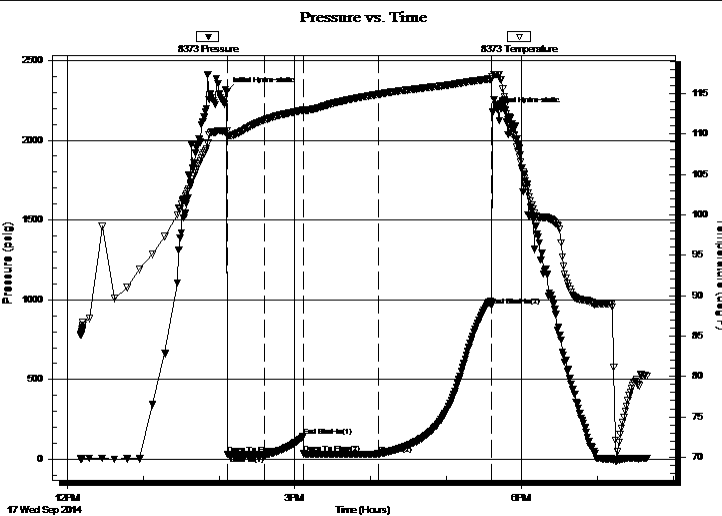
Capacity: 8000.00 psig

Last Calib.: 2014.09.17

Time On Btm: 2014.09.17 @ 14:06:00

Time Off Btm: 2014.09.17 @ 17:36:30

TEST COMMENT: 30: Weak surface blow build to 2".
30: No Return.
60: Weak surface blow build to 2 1/2".
90: No Return.



PRESSURE SUMMARY

Time (Min.)	Pressure (psig)	Temp (deg F)	Annotation
0	2307.28	110.42	Initial Hydro-static
1	31.88	109.78	Open To Flow (1)
30	27.91	111.75	Shut-In(1)
61	143.55	112.94	End Shut-In(1)
61	35.95	112.89	Open To Flow (2)
121	33.53	114.93	Shut-In(2)
210	963.45	116.81	End Shut-In(2)
211	2180.61	117.09	Final Hydro-static

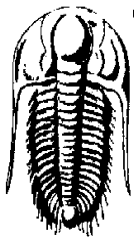
Recovery

Length (ft)	Description	Volume (bbl)
45.00	gocm 1%g 30%o 69% m	0.63

Gas Rates

	Choke (inches)	Pressure (psig)	Gas Rate (Mcf/d)

* Recovery from multiple tests



TRILOBITE TESTING, INC.

DRILL STEM TEST REPORT

Shakespeare Oil Company, Inc.

22-16s-34w Scott

202 W Main St
Salem IL , 62881

Stoll 1-22

Job Ticket: 57465

DST#: 3

ATTN: Steve Davis

Test Start: 2014.09.17 @ 12:10:00

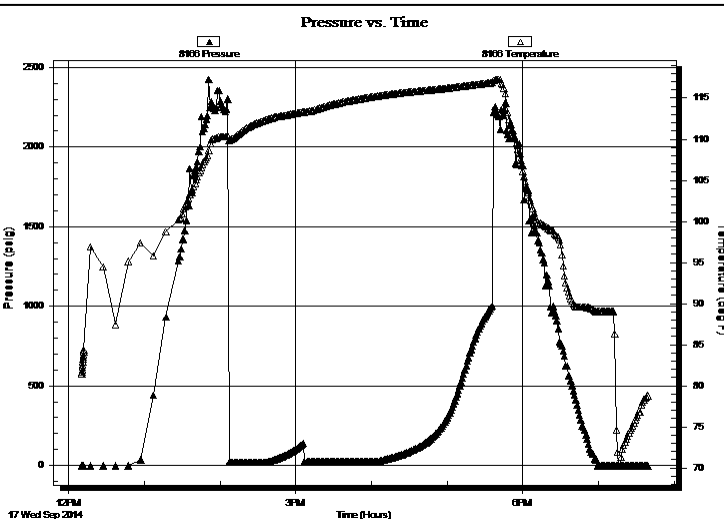
GENERAL INFORMATION:

Formation: Johnson	Test Type: Conventional Bottom Hole (Reset)
Deviated: No Whipstock: 0.00 ft (KB)	Tester: Justin Harris
Time Tool Opened: 14:06:30	Unit No: 60
Time Test Ended: 19:39:30	Reference Elevations: 3140.00 ft (KB)
Interval: 4662.00 ft (KB) To 4720.00 ft (KB) (TVD)	3128.00 ft (CF)
Total Depth: 4720.00 ft (KB) (TVD)	KB to GR/CF: 12.00 ft
Hole Diameter: 7.88 inches	Hole Condition: Poor

Serial #: 8166

Press @ Run Depth: psig @ ft (KB)	Capacity: 8000.00 psig
Start Date: 2014.09.17 End Date: 2014.09.17	Last Calib.: 2014.09.17
Start Time: 12:10:05 End Time: 19:39:29	Time On Btm:
	Time Off Btm:

TEST COMMENT: 30: Weak surface blow build to 2".
30: No Return.
60: Weak surface blow build to 2 1/2".
90: No Return.



PRESSURE SUMMARY

Time (Min.)	Pressure (psig)	Temp (deg F)	Annotation

Recovery

Length (ft)	Description	Volume (bbl)
45.00	gocm 1%g 30%o 69% m	0.63

Gas Rates

	Choke (inches)	Pressure (psig)	Gas Rate (Mcf/d)

* Recovery from multiple tests



**TRILOBITE
TESTING, INC.**

DRILL STEM TEST REPORT

FLUID SUMMARY

Shakespeare Oil Company, Inc.

22-16s-34w Scott

202 W Main St
Salem IL , 62881

Stoll 1-22

Job Ticket: 57465

DST#: 3

ATTN: Steve Davis

Test Start: 2014.09.17 @ 12:10:00

Mud and Cushion Information

Mud Type: Gel Chem

Cushion Type:

Oil API:

0 deg API

Mud Weight: 9.00 lb/gal

Cushion Length:

ft

Water Salinity:

0 ppm

Viscosity: 67.00 sec/qt

Cushion Volume:

bbbl

Water Loss: 10.39 in³

Gas Cushion Type:

Resistivity: ohm.m

Gas Cushion Pressure:

psig

Salinity: 7700.00 ppm

Filter Cake: 1.00 inches

Recovery Information

Recovery Table

Length ft	Description	Volume bbl
45.00	gocm 1%g 30%o 69% m	0.631

Total Length: 45.00 ft Total Volume: 0.631 bbl

Num Fluid Samples: 0

Num Gas Bombs: 0

Serial #:

Laboratory Name:

Laboratory Location:

Recovery Comments:

